



WOMENSWEAR
SS26 UPDATE
SHOES



LIVETREND

SS26 UPDATE SHOES INTRODUCTION



Charles Keith (7).webp



charles keith (2).webp



Reformation (3).webp



Zara (3)_3.jpg



UPDATE

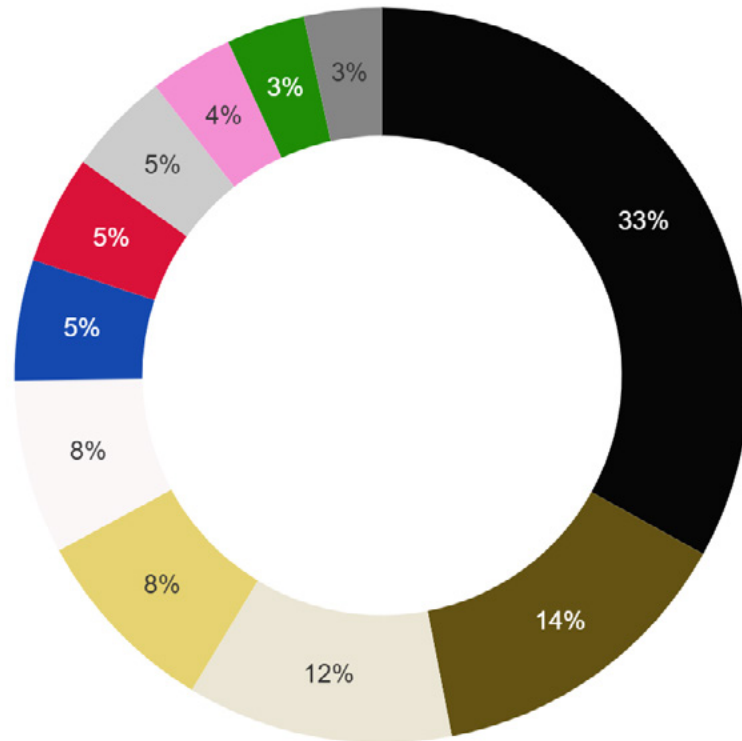
Timeless Tales. Women's footwear for SS26 will continue to embrace the enduring popularity of ballet-inspired styles, evolving through refined variations that emphasize preppy details. Bicolor combinations, contrasted piping, pearls and delicate bows will define these iterations, reinforcing a polished and sophisticated aesthetic. The resurgence of a "lady look" will mark a shift towards a rediscovered femininity: one that reflects an elegant nostalgia and a longing for a more refined past. Heel trends will further highlight this duality: high heels will reinforce sleek elegance, while kitten heels will cater to a more posh and sophisticated sensibility. In terms of color, the palette will align with these themes, favoring rich reds, retro-infused light yellows, and nuanced shades of cyan and turquoise, evoking the aesthetics of classic vacation imagery. Additionally, branding elements such as logos and monograms will subtly return to the market, following a period of minimalistic branding, signaling a renewed interest in status-driven detailing.

This report is based on Livetrend data extracted from Instagram, e-commerce and consumer interest on Spring Collections 2025, analyzing the visibility and growth of the trends compared to the same period last year. The percentages show the evolution year on year.

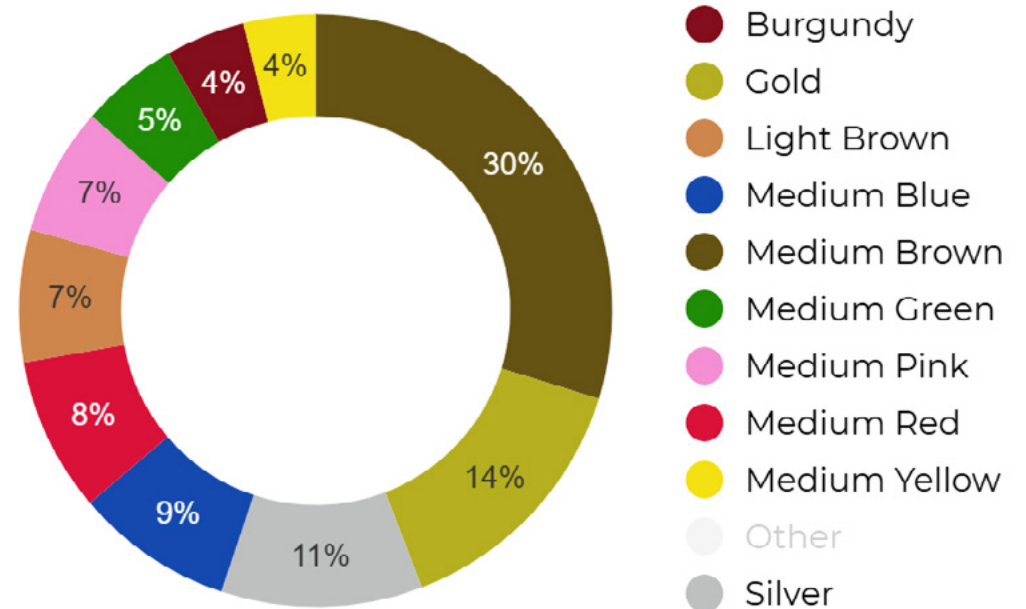
ACCESS ALL IMAGES
CLICKING HERE

SS26 UPDATE SHOES **COLORS ASSORTMENT**

SPRING 25 GLOBAL COLOR RANGE



SPRING 25 FASHION COLOR RANGE



What we can learn from the SS25 women's shoes color palette is combining timeless staples with exciting new additions. Black remains dominant in the range taking 33% of the color assortment, while brown (14%) and neutrals (12%) provide earthy sophistication. Metallics (8%) continue to add sparkle and elegance. White (8%) balances the collection with freshness and a certain sixties vibe. Notably, red sees significant growth (+50%) alongside burgundy (+66%), indicating a rising demand for rich, bold tones. Light pink (+21%) and dark brown (+49%) are also expanding, reflecting an interest in softer and warmer hues. New entries like light yellow (+400%) and peacock blue (+163%) suggest a strong shift for SS26 toward vibrant cold colors, inviting designers to explore bold combinations and innovative textures for the next season.

SS26 UPDATE SHOES **COLORS EVOLUTION**



RED



Prada.jpg



+50%
YEAR ON YEAR

BURGUNDY



H&M_1.avif



+66%
YEAR ON YEAR

LIGHT PINK



H&M.avif



+21%
YEAR ON YEAR

DARK BROWN



Reformation (2).webp



+49%
YEAR ON YEAR

SILVER



Boss.jpg



+76%
YEAR ON YEAR

PEACOCK



Parfois_1.webp



+163%
YEAR ON YEAR

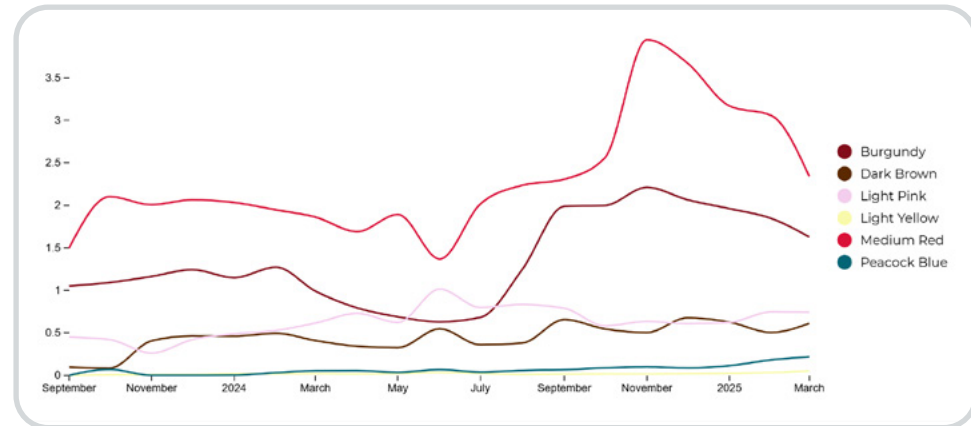
LIGHT YELLOW



Mellow Yellow.webp



+400%
YEAR ON YEAR



SS26 UPDATE SHOES **KEY MATERIALS**

SNAKESKIN



+23%
YEAR ON YEAR

SUEDE



+4%
YEAR ON YEAR



Paris Texas.webp

Khaite.avif

Zara.jpg



Zara (2).jpg

Rivecoeur.webp

&Otherstories.jpg

SATIN



+43%
YEAR ON YEAR

EMBROIDERED MESH



+8%
YEAR ON YEAR



Mango_1.avif

Zara_3.jpg

Charles Keith (5).webp



Zara_1.jpg

mango (5).avif

Other Stories.jpg

SS26 UPDATE SHOES **KEY PATTERNS**

ANIMALIER  **+14%**
YEAR ON YEAR



zara (2)_1.jpg

ANNA F.jpg

Rivecoeur_1.webp

BICOLOR  **+141%**
YEAR ON YEAR



Anna F_1.jpg

Charles Keith (7).webp

Kmb.webp

MONOGRAMS  **+245%**
YEAR ON YEAR



Mango.avif

Gucci.jpg

Jimmy Choo.webp

OUTLINE  **+7%**
YEAR ON YEAR



Bibi Lou.jpg

Sam Edelman.webp

miumiu (2).avif

RETAIL RADAR SHOES **TOE EVOLUTION**

POINTY



Jacquemus.jpg


+22%
YEAR ON YEAR

ROUND



Miu Miu.jpg

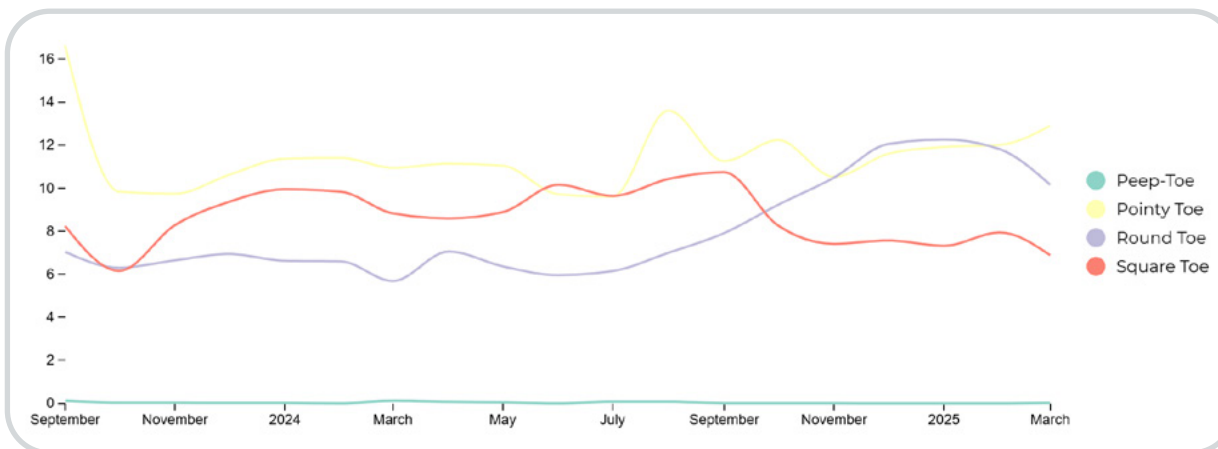

+79%
YEAR ON YEAR

SQUARE



Marni.webp


-22%
YEAR ON YEAR



Round and Pointy toes are dominating the market in 2025 while square toe are slightly decreasing this year, while they're predicted to increase for SS26. The trend will play hybridization and subtlety, creating new elongated squared shapes, amorfous rounded ones or asymmetric cuts. From the fashion shows, the retro allure is bringing back the peep toes as an early sign.

SS26 UPDATE SHOES DETAILS **TOES**

THE **ALMOND TOE**



Amina Muaddi.webp

Loewe.jpg

Zara_4.jpg

THE **LONG SQUARE**



Charles Keith.jpg

jacquemus_1.jpg

Jaffrey Campbell.webp

THE **POINTY HIGH VAMP**



Le Monde Beryl.jpg

next.webp

The Row.jpg

THE **MICRO PEEP-TOE**



Mango_2.avif

Saint Laurent.jpg

miu miu.webp

RETAIL RADAR SHOES **HEELS EVOLUTION**

HIGH HEELS



Khaite (2).avif



+69%

YEAR ON YEAR

BLOCK HEELS



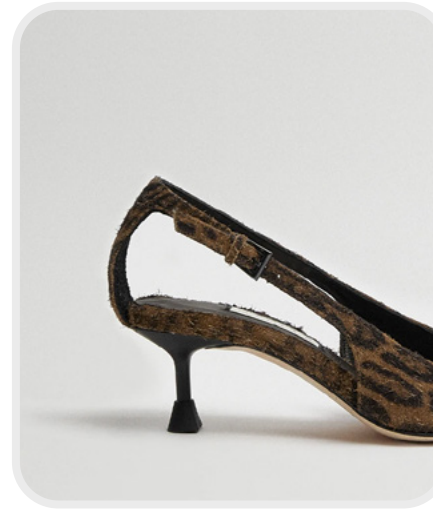
Scarosso.jpg



-41%

YEAR ON YEAR

KITTEN HEELS



Miista.webp



+92%

YEAR ON YEAR

PLATFORMS

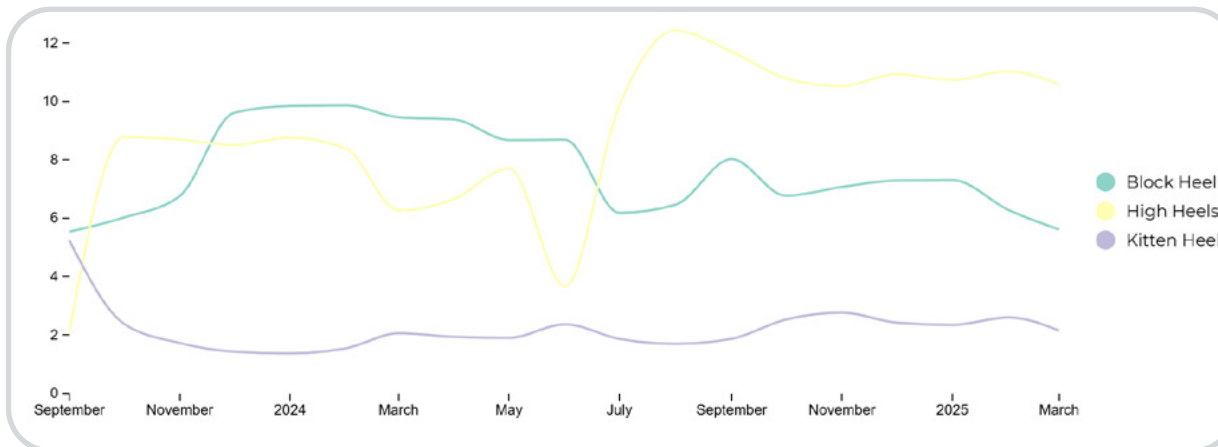


&otherstories (4).jpg



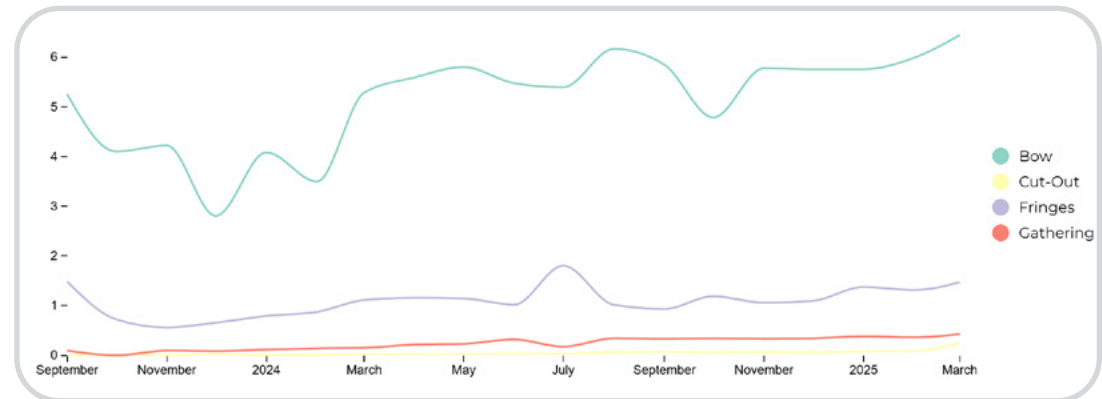
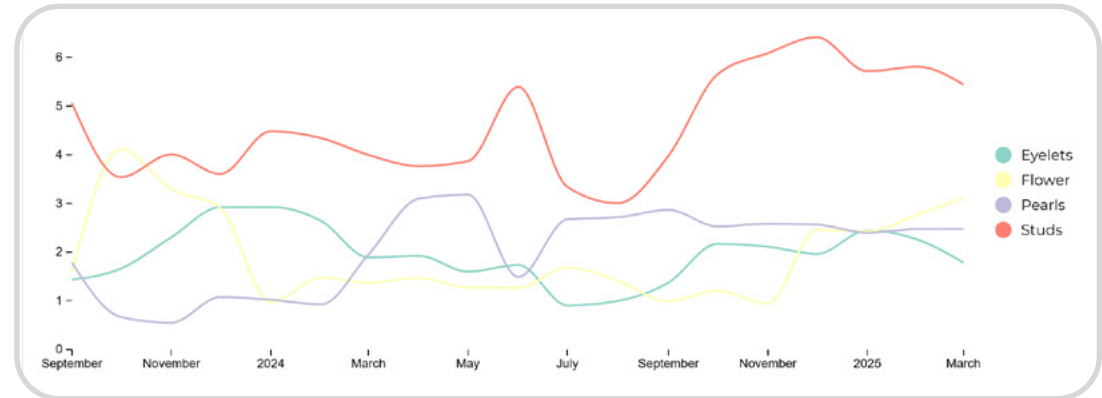
+1%

YEAR ON YEAR



Heels are giving distinct signs of their come back. High heels and kitten heels are rising in the market taking a more refined and feminine allure. Platforms and block heels are less visible compared to last year.

RETAIL RADAR SHOES **DETAILS EVOLUTION**



Trims and details present a dynamic contrast, blending bold and feminine elements. Studs and eyelets bring a punk edge to the collection, adding a rebellious, urban feel, while pearls and 3D florals introduce a more ladylike, refined nuance. Bows continue to rise, enhancing the romantic and preppy side of the designs. Meanwhile, asymmetrical cut-outs and gathered looks signal a new exploration of silhouettes, emphasizing fluidity and movement as fringed trims. Designers are encouraged to play with the interplay of hard and soft elements—mixing edgy accents with delicate touches to create a collection that's both daring and sophisticated.

SS26 UPDATE SHOES **DETAILS**

DAINTY BOWS



+22%
YEAR ON YEAR



SAFE TREND

Dolce & Gabbana.jpg

Reformation (4).webp

Ferragamo.jpg

CUT-OUTS



+1150%



EARLY SIGN

Reformation (5).webp

Prada (4).jpg

Tory Burch_1.png

PLEATS & GATHERING



+187%
YEAR ON YEAR



EARLY SIGN

chloe.jpg

miu miu (2).jpg

margiela.jpg

FRINGES



+18%
YEAR ON YEAR



STABLE TREND

Otherstories.jpg

Parfois (2).webp

zara (3).jpg

SS26 UPDATE SHOES **DETAILS**

BULBY STUDS



+41%
YEAR ON YEAR



SAFE TREND

Jeffrey Campbell (2).webp

Zara (2)_2.jpg

Reformation.webp

EYELETS



+74%
YEAR ON YEAR



SAFE TREND

&otherstories (13).jpg

Sacha.webp

Campbell.webp

PEARLS



+171%
YEAR ON YEAR



EARLY SIGN

charles keith (3).webp

Rivecoeur_2.webp

Lolacruz.jpg

3D FLORALS



+127%
YEAR ON YEAR



SAFE TREND

&otherstories (12).jpg

zara (3)_2.jpg

zimmermann.avif



WOMENSWEAR
SHOES UPDATE
KEY STYLES



LIVETREND

RETAIL RADAR SHOES **BOOTS**



MANIFEST

THE **FRINGED TEXAN**



+182%
YEAR ON YEAR



Alma & pena.png



Zara (2)_3.jpg



Zadig&Voltaire.avif



Freepeople.webp



Maje.webp

LAST CALL



TEST

THE **WALLABEE**



+350%
YEAR ON YEAR



Derimond (2).webp



Colors.jpg



Satorisian.webp



Derimond.webp



Clarks.jpg

BIG TREND

RETAIL RADAR SHOES **FLATS**



MANIFEST

THE **LACED-UP FLATS**



+164%
YEAR ON YEAR



Ganni (2).jpg



Mango.png



Camper.webp



Zara (2)_4.jpg



Kiko Kostadinov.jpg

BIG TREND



MANIFEST

THE **FLAT MARY-JANE**



+77%
YEAR ON YEAR



mango (4).avif



Nakd.jpg



&otherstories (2).jpg



Raid.jpg



Parfois.webp

BIG TREND

RETAIL RADAR SHOES **FLATS**



TEST

THE **BOHO MOCASSIN**



+20%
YEAR ON YEAR



Anniel.jpg



Bed Stu.webp



We The Free.jpg



zARA_2.jpg



Alohas.webp

SAFE TREND



TEST

THE **BABY MARY-JANE**



+68%
YEAR ON YEAR



zara_6.jpg



Miu Miu_1.jpg



dutti.jpg



Tory Burch.png



Chloe.webp

SAFE TREND

RETAIL RADAR SHOES **LOW & MID HEELS**



INVEST

THE **HEELED BALLERINA**



+33%
YEAR ON YEAR



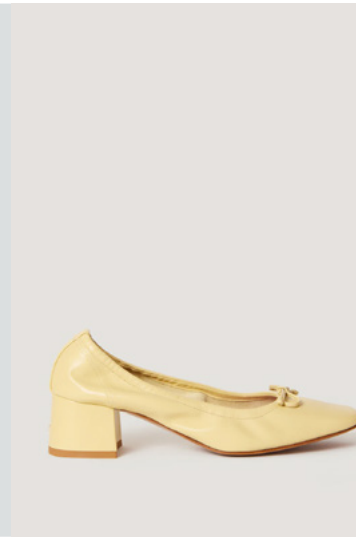
@miumiu.png



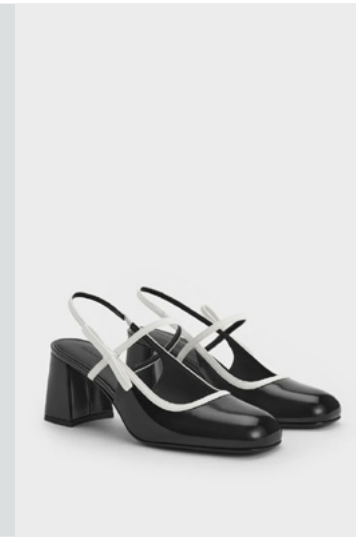
Chloe.avif



Moschino.webp



Rose Paris.webp



charles keith.webp

SAFE TREND



MANIFEST

THE **KITTEN SLINGBACK**



+98%
YEAR ON YEAR



Reformation_1.webp



Miu Miu_2.jpg



Anna F (2).jpg



Bibi Lou.jpg



Toteme.avif

BIG TREND

RETAIL RADAR SHOES **LOW & MID HEELS**



INVEST

THE POINTY MULE



+121%
YEAR ON YEAR



Zara (2)_5.jpg



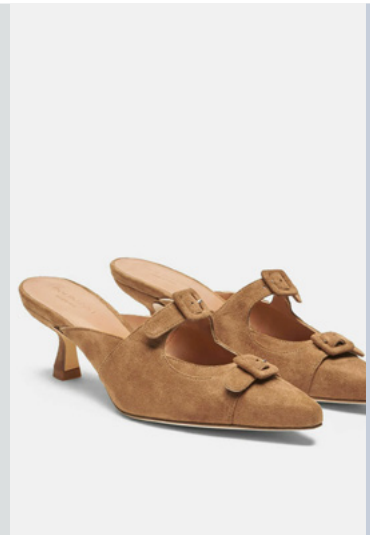
Manolo Blahnik.avif



Jeffrey Campbell (3).webp



Prada.avif



Scarosso.webp

SAFE TREND



TEST

THE KITTEN PEEP-TOE MULE



+4%
YEAR ON YEAR



Reformation_2.webp



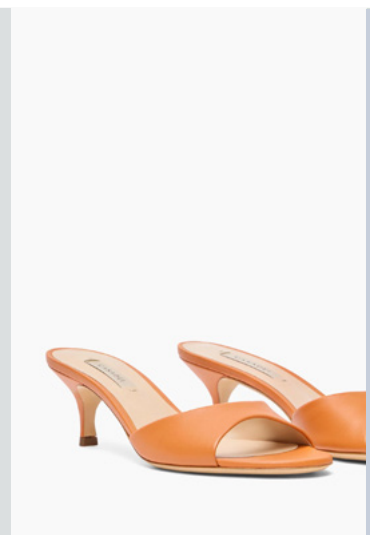
Mango.webp



Aldo.webp



Bershka.png



Casadei.webp

SAFE TREND

RETAIL RADAR SHOES **HIGH HEELS**



TEST

THE **DANCE PUMP**



+50%
YEAR ON YEAR

EARLY SIGN



Zara (3)_1.jpg



+H&M.avif



Alevi.jpg



414764-2Z.jpg



moonsoon.jpg



INVEST

THE **LADY SLINGBACK**



+53%
YEAR ON YEAR

SAFE TREND



Charles Keith (6).webp



miumiu.avif



Rouje (3).webp



Valentino.webp



Valentino (2).jpg

RETAIL RADAR SHOES SANDALS



INVEST

THE STRAPPY STILETTO



+46%
YEAR ON YEAR



miumi (5).avif



Charles Keith (4).webp



mango (2).avif



Ferragamo.jpg



Amina Muaddi_1.webp

SAFE TREND



INVEST

THE ENTANGLED



+40%
YEAR ON YEAR



Bibi Lou (2).jpg



dutti (3).jpg



Prada_1.avif



Rouja.webp



Bash.avif

SAFE TREND

RETAIL RADAR SHOES SANDALS



INVEST

THE RUSTIC PLATFORM



+600%
YEAR ON YEAR



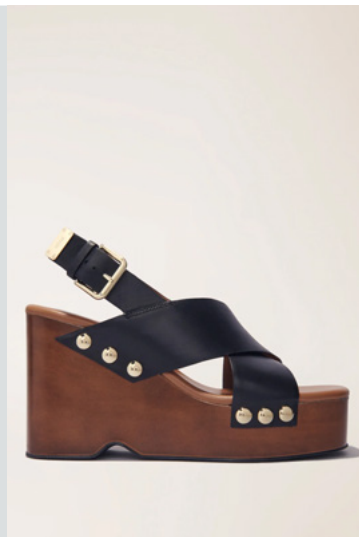
chloé_2.jp_



Zara (2)_6.jpg



&otherstories (4).jpg



Maje (2).webp



bershka.jpg

BIG TREND



INVEST

THE KITTEN FLIP-FLOP



+87%
YEAR ON YEAR



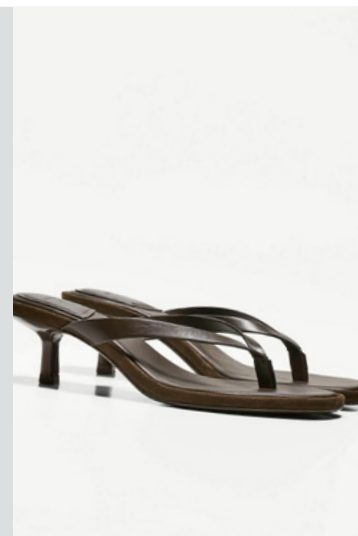
Toteme.webp



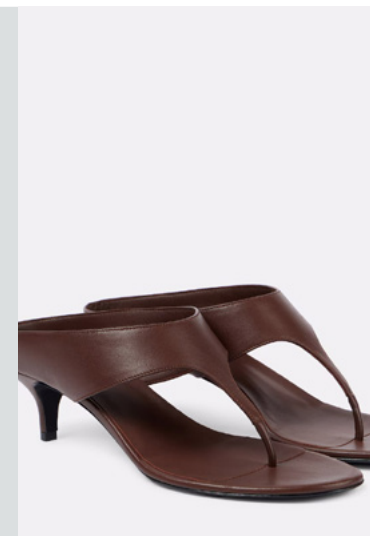
Zara_7.jpg



Summer Away.webp



bershka_1.jpg



magdabutrym.jpg

SAFE TREND

RETAIL RADAR SHOES SANDALS



TEST

THE FISHERMAN SANDALS



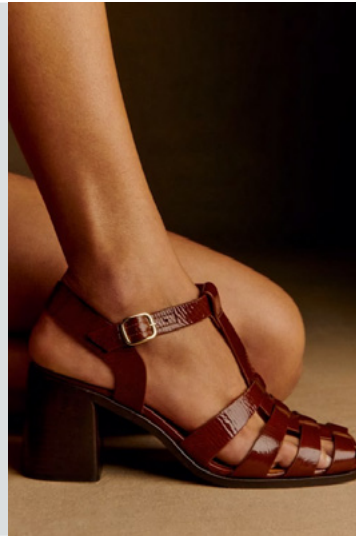
+55%
YEAR ON YEAR



valentino_2.jpg



bally_2.jpg



sezane_3.jpg



zara_5.jpg



jwanderson.jpg

SAFE TREND



TEST

THE ASYMMETRIC TOE-LOOP



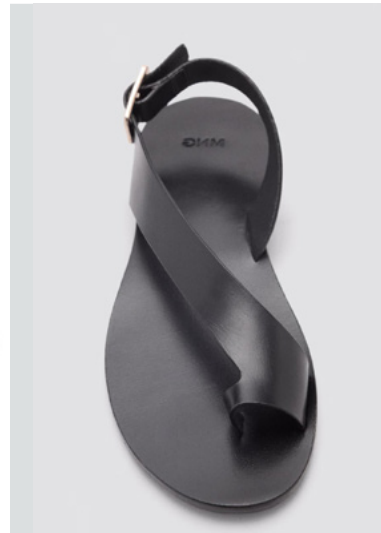
+87%
YEAR ON YEAR



therow.jpg



tropicana.webp



mango_2.jpg



zara_11.jpg



toteme.jpg

SAFE TREND

RETAIL RADAR SHOES **EMERGING STYLES**

WWW
+62%
YOY

THE TOE RING



amanu.jpg

zign.webp

zara_15.jpg

EARLY SIGN

WWW
+46%
YOY

THE ANKLE THONG



Courreges.jpg

miumiu (3).avif

Toteme.jpg

EARLY SIGN

WWW
+99%
YOY

THE BIKER SANDAL



Rag&Bone.webp

Zara (2)_7.jpg

Pepe Jeans.webp

SAFE TREND

WWW
+1%
YOY

THE ERGONOMIC COMFORT



zara_30.jpg

sezane.jpg

birkenstock_2.jpeg

STABLE TREND

DATA SOURCES & ICONS

TREND GROWTH



MARKET

YEAR ON YEAR TREND
GROWTH ON E-COMMERCE



SOCIAL MEDIA

YEAR ON YEAR TREND
GROWTH ON INSTAGRAM



CONSUMER INTEREST

YEAR ON YEAR GROWTH OF
ONLINE SEARCH VOLUMES



FASHION SHOWS

YEAR ON YEAR TREND
GROWTH ON FASHION SHOWS

TREND BEHAVIOR

EDGY TREND

weak signal of a potential micro
trend with very high risk

EARLY SIGN

emerging trend with growing
perspective but higher risk

SAFE TREND

announced trend with
growing perspective and safe risk

BIG TREND

trend with a big magnitude due to high
commercial potential and quick adaption

STABLE TREND

trend that is already present in
the market with flat growth

LAST CALL

trend with decreasing perspective but
still having business potential

TREND MAGNITUDE



MANIFEST

AN ICONIC PRODUCT THAT IS
A STABLE TREND OF LARGE
MAGNITUDE WITH CONFIRMED
COMMERCIAL SUCCESS



INVEST

A CORE PRODUCT REPRESENTING
A STEADILY GROWING TREND OF
MODERATE MAGNITUDE WITH COM-
MERCIAL POTENTIAL



TEST

A STATEMENT PRODUCT WITH
GROWING PERSPECTIVE BUT
SMALLER MAGNITUDE AND
HIGHER RISK



LIVETREND

THANK YOU!

You may not copy, reproduce, distribute, publish, display, perform, modify, create derivative works, transmit, or in any way exploit any such content, nor may you distribute any part of this content over any network, sell or offer it for sale, or use such content to construct any kind of database. You may not alter or remove any copyright or other notice from copies of the content on any Livetrend report.

If you have further needs, please contact us via chat.