



FORECAST
FW 2026
ACCESSORIES
MATERIALS
& TEXTILES



LIVETREND

FW26 MATERIALS INTRODUCTION



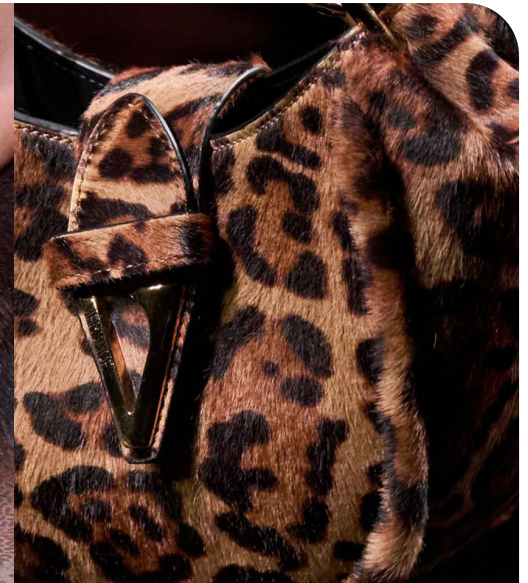
mccartney



iceberg



msgm



versace



FORECAST

Surface Tension.

This season's accessory trends explore material storytelling through four distinct macro narratives—each rooted in emotion, memory, and texture. From softness to subversion, these themes reflect how surfaces can hold meaning and mood. Bucolic Slumber invites a return to slowness and simplicity, embracing tactile comfort through knits, shearling, and heritage wools. In contrast, Lavish Subversion twists traditional luxury with irony, reworking croc, satin, and velvet into playful elegance. Primal Futurism looks ahead by grounding itself in elemental materiality—distressed leathers, coated finishes, and ombré treatments create a future shaped by the raw and the refined. Finally, Dark History conjures a gothic dreamscape, where feathers, lace, jewels, and embossed leathers evoke romantic relics and dramatic rituals. Together, these four worlds show how accessories can whisper, shout, or haunt—through nothing but texture.

*This forecasting report is based on innovative LIVETREND Data and the expertise of Trend Analysts.
The trends in this report are organized by their magnitude and impact. Find the relating icons & stamps on the last slides.*

**ACCESS ALL IMAGES
CLICKING HERE**

MACROTRENDS FW26 **OVERVIEW**

BUCOLIC SLUMBER



**COASTAL WHIMSY
STILLWATER DIARIES
PRE-COFFEE**

LAVISH SUBVERSION



**BOURGEOIS REBELS
ENCHANTED EVERYDAY
VELVET HOUR**

PRIMAL FUTURISM



**POST-NATURE
NOMADIC WHISPER
SHADOWS OF THE LAND**

DARK HISTORY



**RE-HISTORICAL
SANCTUM
SHADOW CIRCUIT**

BUCOLIC SLUMBER



Stephan Lisowski - Harper_sBazaar.jpg



@fannyamandanilsson8.png



Thom Brown36.jpg

BUCOLIC SLUMBER invites accessories to retreat into the comforting quiet of rural reverie. Rooted in soft tactility and homely heritage, this trend channels the intimacy of pre-digital slow living—evoking the feel of knitwear by the fire, fogged-up windows, and the hush of the countryside.

Textiles take on a deliberately gentle, grounded character: nubuck, brushed suedes, and suedettes soften silhouettes into natural contours, while shearling trims and fleece linings evoke nostalgic utility. From tactile patchwork to cozy boots with sherpa interiors, accessories are designed for both warmth and emotional resonance.

Craftsmanship is key, celebrating familiar comforts through knit-inspired forms, felted textures, and boiled wools. The palette echoes the rural landscape—moss, oat, bark—with tactile contrast guiding the design. Patchworked leather and suede bring a hand-hewn sensibility, where textural combinations feel storied and domestic.

This is a trend of bucolic dreams and quiet function, where accessories are not just worn—but inhabited. They suggest a slower pace and deeper grounding, offering wearers an emotional cocoon in an overstimulated world. “Bucolic Slumber” is a pause button.

SOFT SUEDE



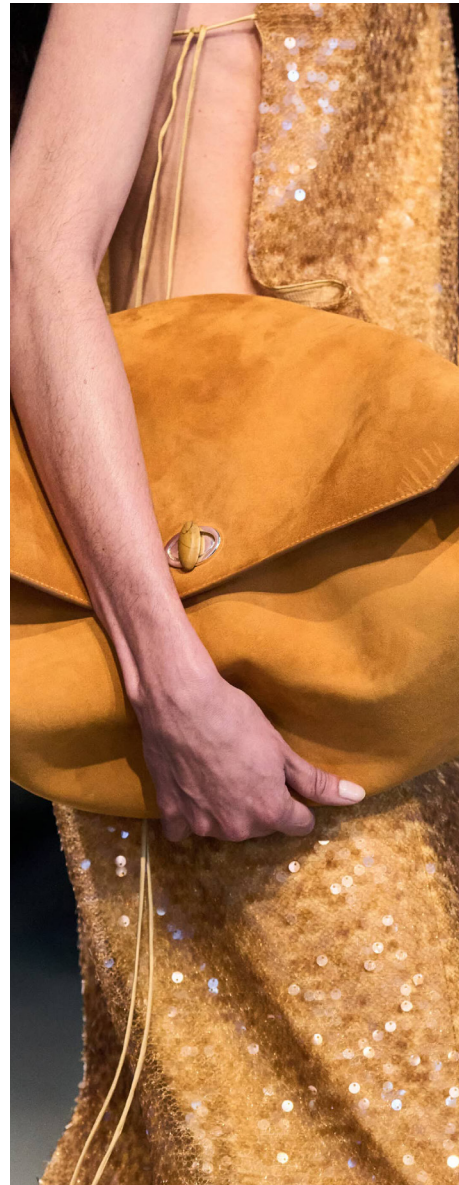
bluemarble-m-clp-f25-069.jpg



toteme



zimmermann-clp-f25-117.jpg



esber



@oscar_calleja_14.png



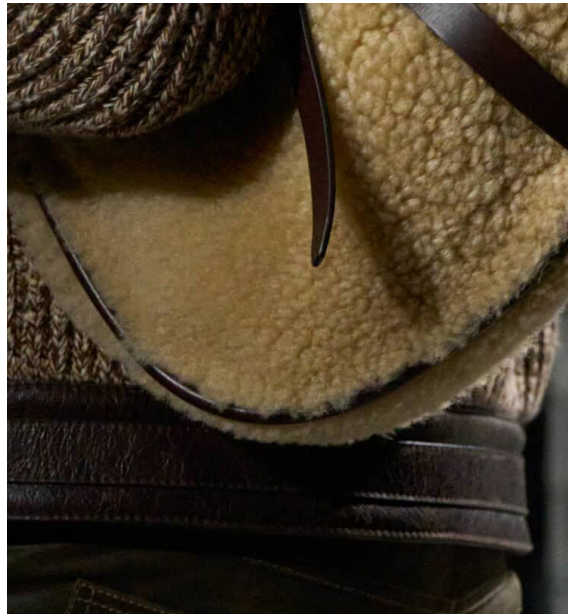
ijl sander

NUBUCK - BRUSHED SUEDE - SANDPAPERED CALFSKIN - SUEDETTE

SHEARLING



kenzo



etro-clp-f25-111.jpg



COCHAINS+FW23+-27.jpg



vuitton-clp-f25-140.jpg



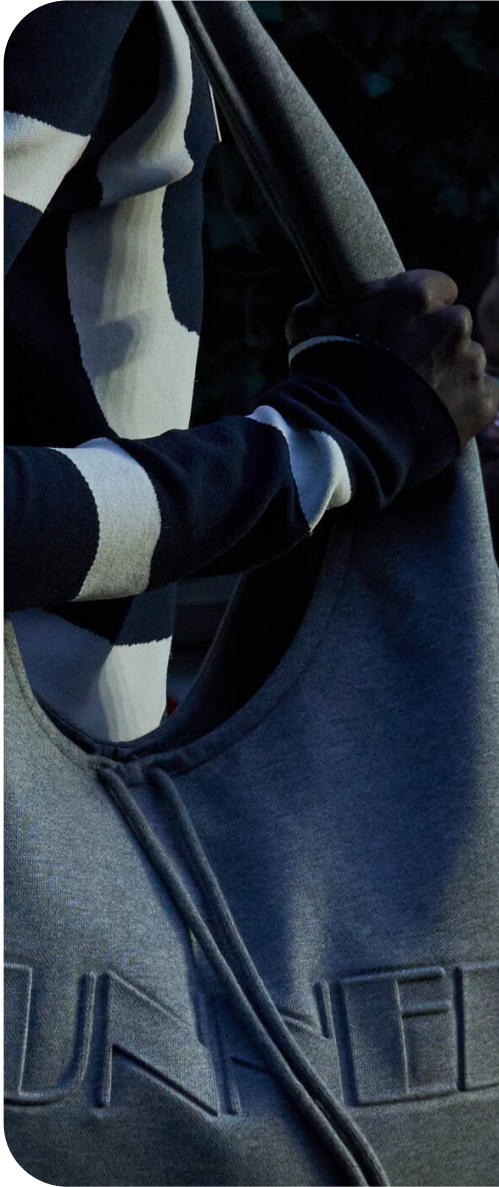
dior



monse-clp-f25-048.jpg

SHEARLING LINING - FLEECE TRIM - SHERPA PANELING

KNITS



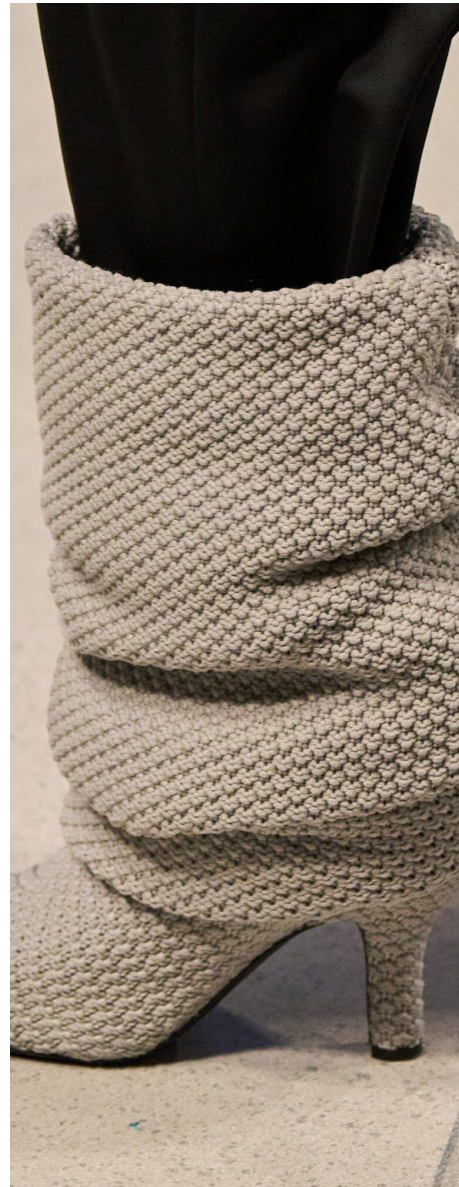
sunnei-clp-f25-030.jpg



victoria-beckham-clp-f25-064.jpg



prada-clp-f25-107.jpg



vuitton-clp-f25-144.jpg



marco-rambaldi-clp-f25-051.jpg



balmain-clp-f25-051.jpg

TEXTURED KNIT FABRICS - BOILED WOOL - HAND-KNIT AESTHETIC

HERITAGE WOOL



coperni



diesel-clp-f25-170.jpg



Kronthaler Westwood 25.jpg



Kronthaler Westwood 10.jpg



hender.png



Thom Brown25.jpg

WOOLEN - TWEED - HERRINGBONE - FELTED - CHECKED FLANNEL

MATERIAL CONTRASTS



fendi



vuitton-clp-f25-114.jpg



ulla-johnson-clp-f25-196.jpg



valentino-clp-f25-110.jpg



burberry-clp-f25-070.jpg



By_Far.jpg

PATCHWORK CONSTRUCTION - SUEDE & LEATHER COMBO

PRIMAL FUTURISM



©-tissus-bemz.jpg



E2-SERVICESILVER-MAC.jpg



@leonmanuelblanck.jpg

Primal Futurism fuses elemental minimalism with forward-thinking materiality. This trend is grounded in raw surfaces like cracked leathers, and coated synthetics—but elevated by sleek, sculptural forms. Accessories in this trend feel post-natural: rooted in terrain and erosion, yet shaped by engineered precision. The materials are matte, burnished, weathered - all echoing landscapes more than laboratories.

With the addition of ombré leather treatments and airbrushed finishes, introduces a sense of fluid motion and natural gradient. Color transitions feel organic, like light shifting across stone or sand. These subtle tonal shifts enhance the primal palette—bone, clay, ash, and oxidized metal.

Function is never sacrificed for the theme's accessories; silhouettes remain architectural, clean-lined, and wearable. Yet within each form lies textural intrigue—an invitation to touch, to connect, to remember the land beneath our feet.

Primal Futurism imagines a future built not on escape, but on return. A retreat into tactility. A rejection of noise. Accessories here are quiet but intentional—objects of grounded innovation that carry the spirit of survival, evolution, and harmony with a changing earth.

WAXED & SLEEK



chloe-clp-f25-161.jpg



n-21-bks-f25-206.jpg



byfar



kors-clp-f25-160.jpg



bea



@aeyde 3.png

ULTRA-CLEAN FINISH - PU LEATHER - COATED CALFSKIN

FUR & FAUX FUR



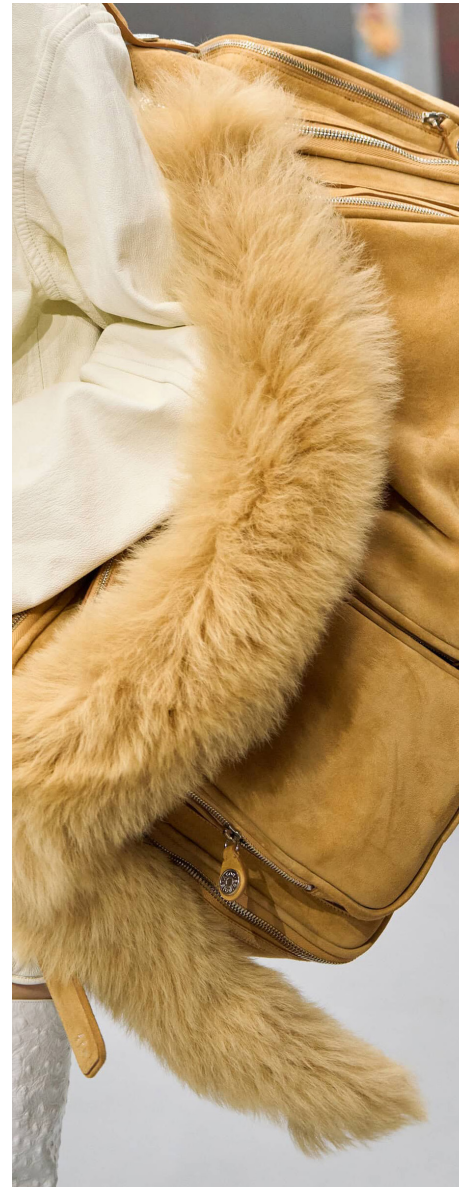
ganni-bks-f25-093.jpg



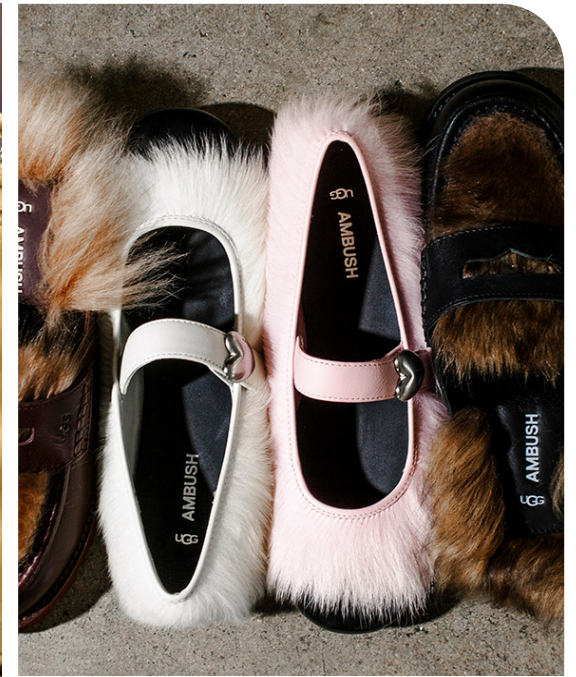
Moncler x Rick Owens livia Me my TEDDY.jpg



zimmermann-clp-f25-143.jpg



acne-clp-f25-119.jpg



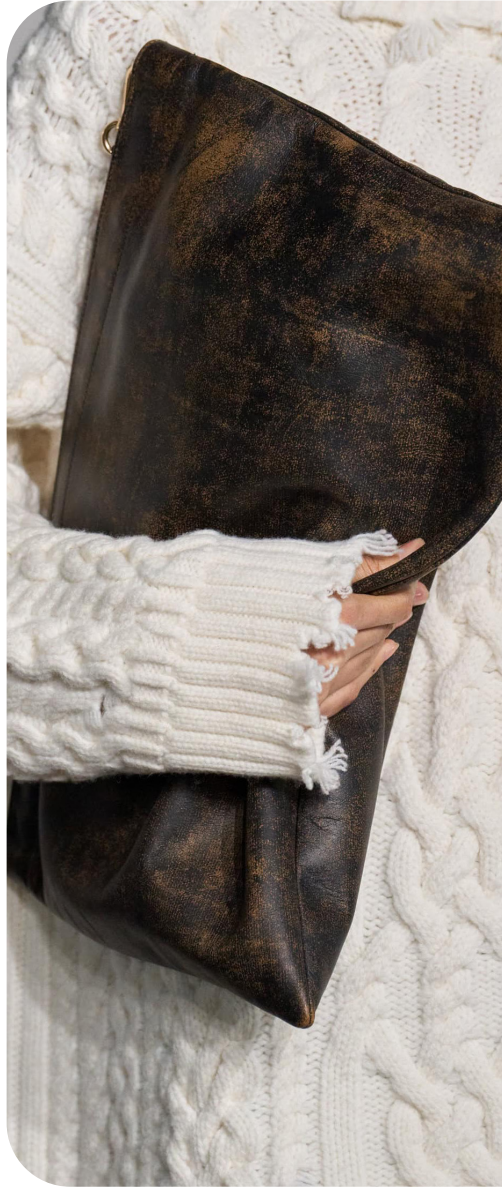
ugg.png



ulla-johnson-clp-f25-125.jpg

MONGOLIAN FUR - SHAGGY SYNTHETICS - LONG-PILE PLUSH

DISTRESSED LEATHER



simkhai



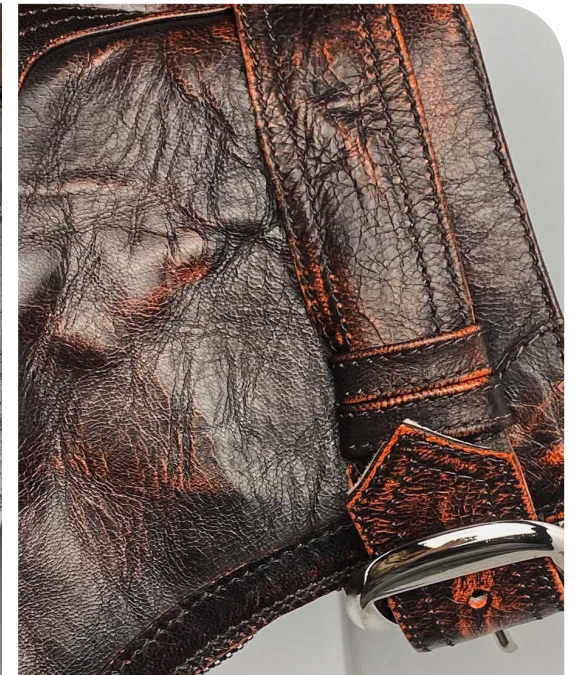
diesel-clp-f25-217.jpg



dior-clp-f25-074-l.jpg



vaquera-clp-f25-105.jpg



modaoperandi



prada-clp-f25-106.jpg

CRACKLED - FOIL-EFFECT - WEATHERED TEXTURING - PATINA

OSTRICH



acne-clp-f25-168.jpg



jil-sander-clp-f25-065.jpg



mccartney



tods-clp-f25-060.jpg



acne-clp-f25-122.jpg



Tods 24.jpg

OSTRICH LEATHER - FAUX EXOTIC SKIN

PONY HAIR



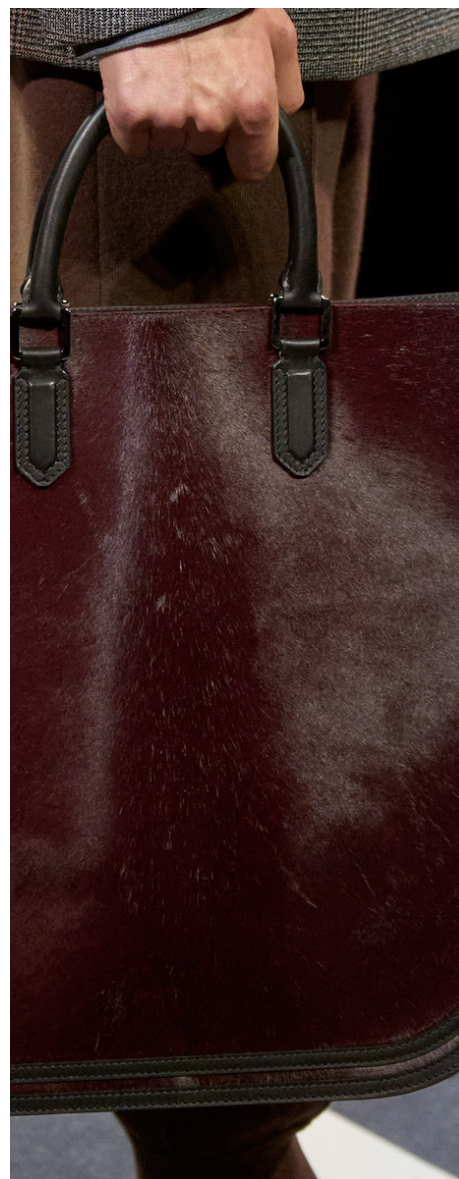
uma wang



daphnegikel (1).jpeg



jacquemus



Lanvin.png



nina ricci



@svdae 13.png

NATURAL PELT - PONY HAIR (CALF HAIR) - COWHIDE LEATHER

OMBRÉ



ottolinger



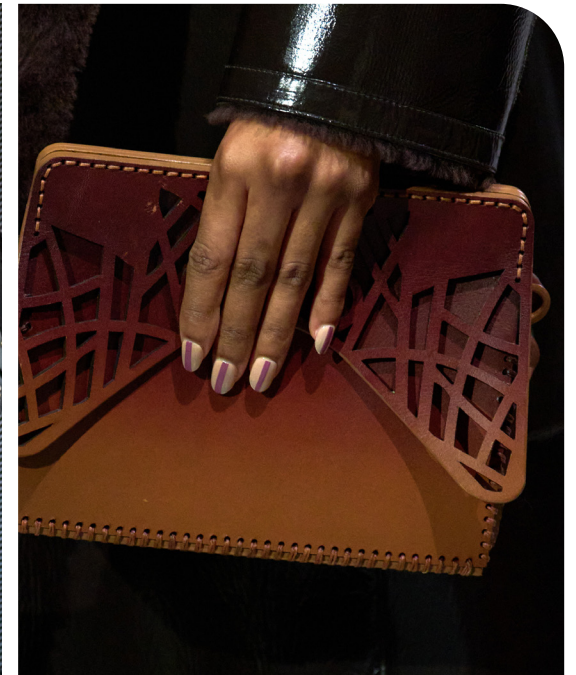
Genny_gny_det_mln_aw25_097.jpg



prada-clp-f25-058.jpg



off white



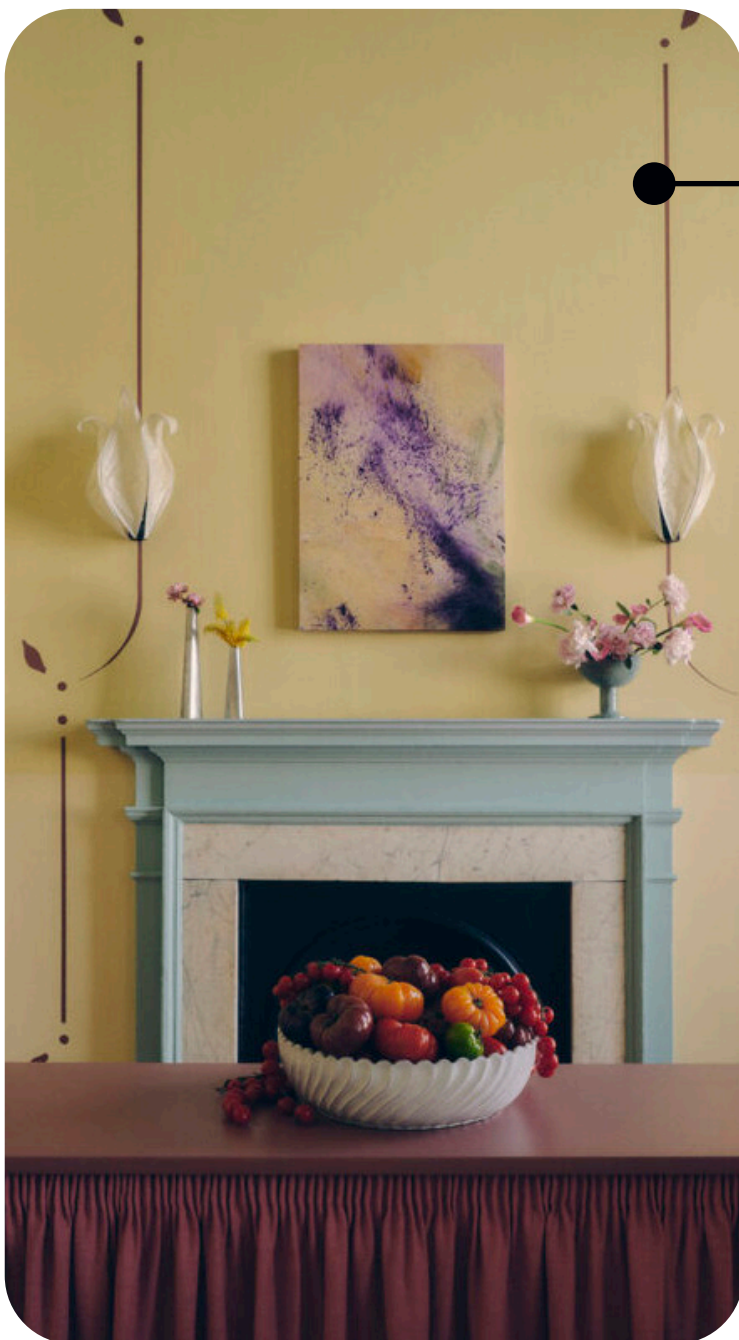
mohapatra



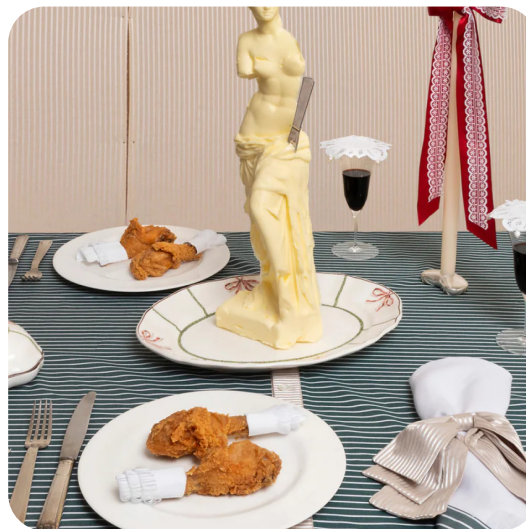
mm6-clp-f25-131.jpg

GRADIENT LEATHER - AIRBRUSHED - DIPPED COLOR TREATMENTS

LAVISH SUBVERSION



cafe petiole



Gohar-World.jpg



acne.avif

Lavish Subversion reclaims opulence with irony, remixing bourgeois elegance into something playful, indulgent, and unexpectedly radical. It's maximalism with a smirk—where no texture is too rich, and no finish too polished to be twisted. Accessories in this realm embrace nostalgia, but through a postmodern lens.

Croc-embossed leathers, once symbols of status and refinement, now appear in cheeky chevrons, patchwork boots, and exaggerated silhouettes. They sit alongside silky satins, baroque velvets, and tapestry florals, all hinting at traditional glamour but delivered with theatrical flair.

Here, luxury is exaggerated and reimaged. A plush slipper might reference Marie Antoinette, but it's paired with teddy fleece. A jewel-toned handbag might evoke old money, but it's molded into something cartoonishly sculptural. This is a world where decorum is draped in drama—and where heritage becomes playground.

Lavish Subversion isn't about rejecting refinement—it's about owning it, flipping it, and wearing it with knowing wit. It invites us to dress like we've inherited the estate and thrown out the rules. The result? Accessories that are both elegant and irreverent, nostalgic and new. Beautifully off. Deliberately too much.

PLUSH TEXTURES



Fendi 73.png



casablanca brand 2.jpg



Coach 50.jpg



Coach 62.jpg



Kenzo 3.jpg



balmain 13.jpg

FAUX FUR - TEDDY FLEECE - PLUSH FABRIC

VELVETS



Erdem 44.jpg



Ulla Johnson 82.jpg



burberry-clp-f25-l23.jpg



valentino



@cazevedor-6.png



Nina Ricci 3.jpg

VELVET - RICH SURFACE TEXTURING

CROCO & SNAKE



MiuMiu 11.jpg.webp



no 21 56.jpg



iceberg-clp-f25-120.jpg



Fendi 16.png



DULCEAUTUMNGLOSSYCROCOEMBOSSLEATHER_3vdp



Gucci 53.jpg

MOCK CROC - FAUX EXOTIC SKIN - CROCODILE EMBOSSED LEATHER

LUSH SATINS



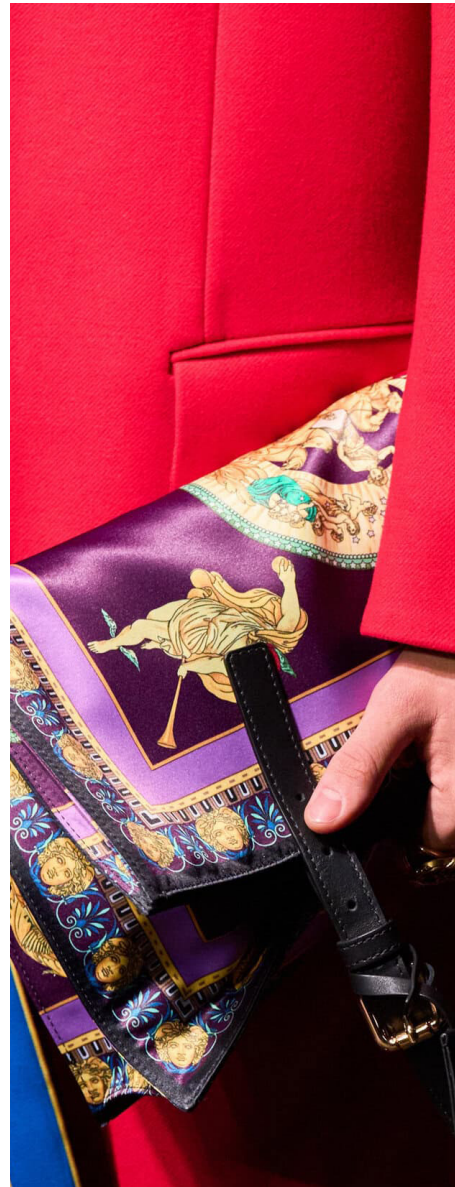
Fendi 5.png



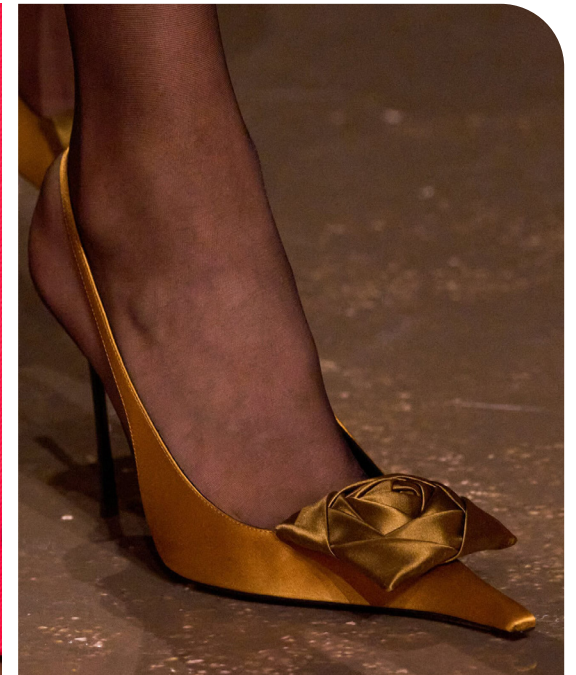
@hisarahbrown1.png



markcorssl.png



Versace 68.jpg



Saint laurent 51.jpg



tom ford 7.jpg

SATIN - SILK - DAMASK - HIGH-SHINE FINISH

TAPESTRY



etro-clp-f25-099.jpg



vuitton-clp-f25-098.jpg



esber-clp-f25-084.jpg



Dries_Van_Noten.jpg



ganni-bks-f25-084.jpg



etro-clp-f25-105.jpg

BROCADE - UPHOLSTERY FABRICS - FLORAL CHENILLE - BAROQUE

DARK HISTORY



@matteocapirola.png



burberry



dior

Dark History is a baroque theatre of shadows, where accessories step onto the stage as costumed relics of a bygone era—part myth, part masquerade. Steeped in medieval solemnity and Victorian opulence, this trend transforms materials into dramatic symbols of power, memory, and rebellion. It's a world of dark knights, veiled widows, and sacred ceremony, retold through rich, timeworn surfaces.

Hyper-embellished jewels, cabochons, and crusted crystals echo ancient regalia—crowns, relics, and armor—while embossed leather, metal mesh, and ornamental lace lend a gothic tactility reminiscent of cathedral pews and candlelit processions. Feathers, brocade, and burnished patent become stage props in this visual opera—fragile yet defiant, opulent yet ominous.

Color palettes dive deep: black velvet, oxblood stain, tarnished gold, and ivory worn like bone. Every detail is performative, ritualistic, and cinematic—designed not to decorate, but to declare.

This is not nostalgia—it's renarration. A dark retelling. A reclaiming of history's aesthetic codes with a sharpened edge. Dark History is fashion as costume, accessory as relic, and surface as script—written in lace, etched in leather, and crowned in stone.

LACE & OPENWORK



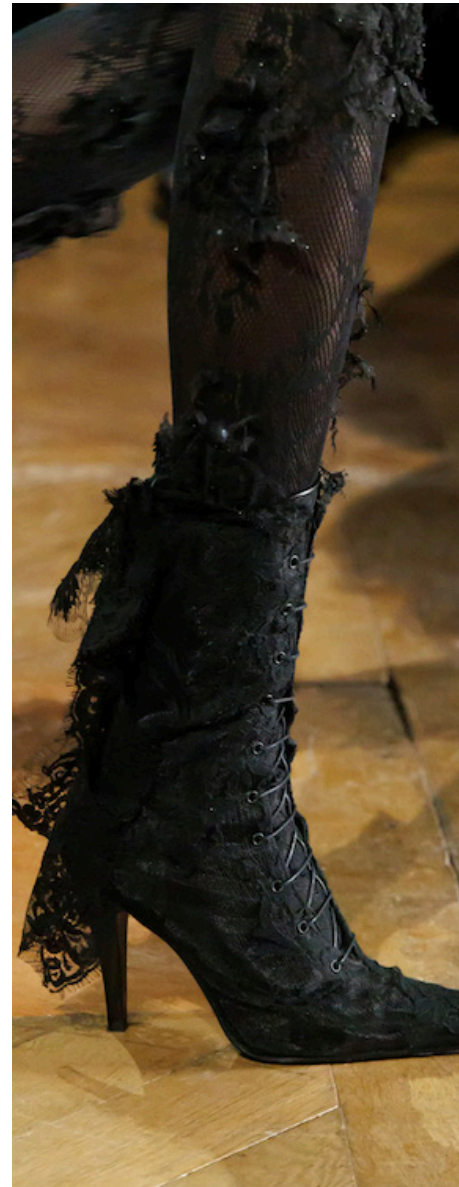
dior 12.jpg



alexander mcqueen 26.png



Alice & Olivia 6.jpg



alexander mcqueen 32.png



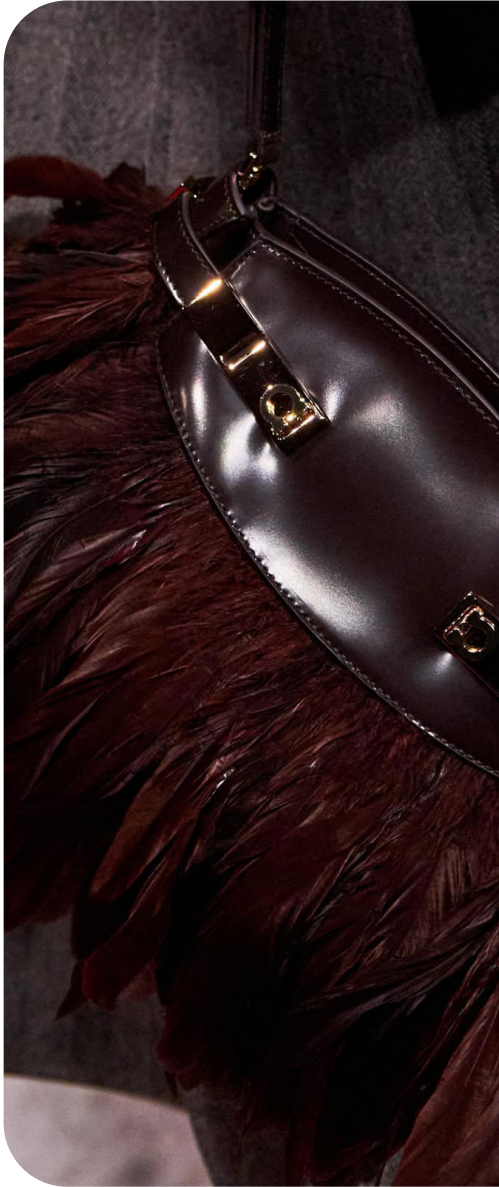
alohas



@priveaffair 9.png

LACE - BRODERIE ANGLAISE - EMBROIDERED TULLE

FEATHERS



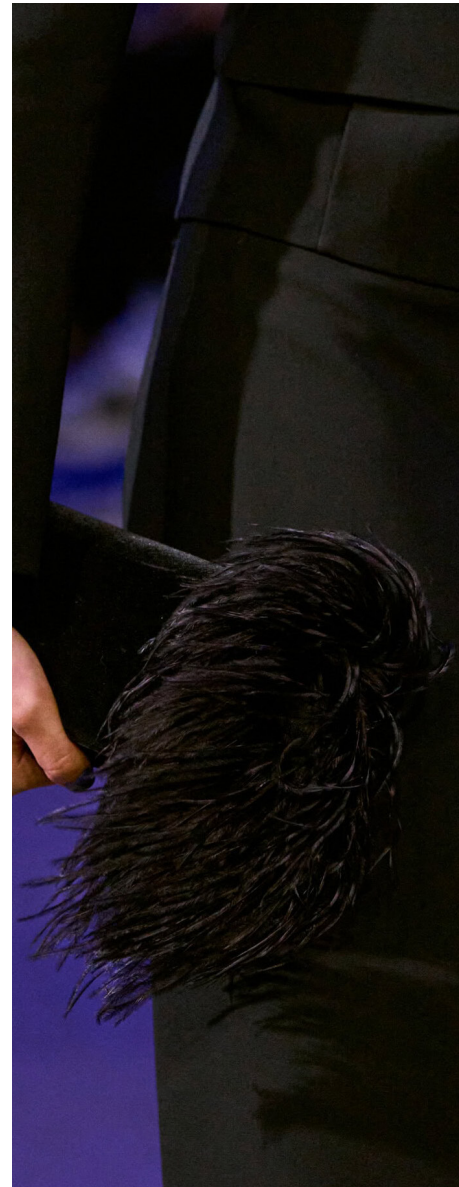
Ferragamo 49.jpg



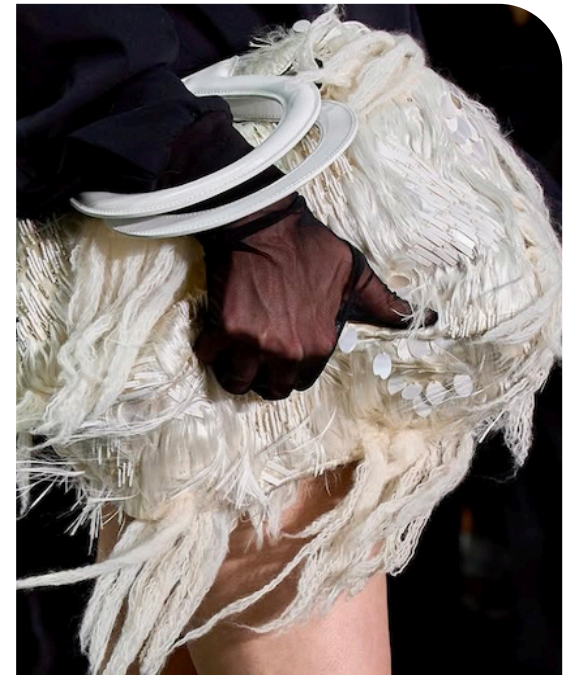
van-noten-clp-f25-058.jpg



@kuleskapik29.png



akris-clp-f25-103.jpg



@emceestudios1.png



sportmax (4).jpg

OSTRICH PLUME - FAUX FEATHERS - MARABOU - FEATHER TRIM

HYPER EMBELLISHED



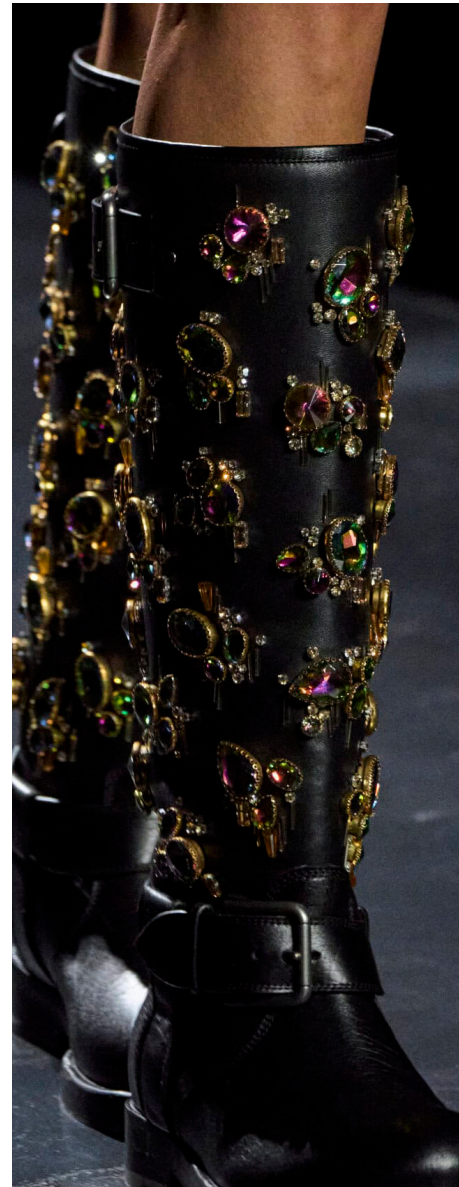
@sirraharchive1.png



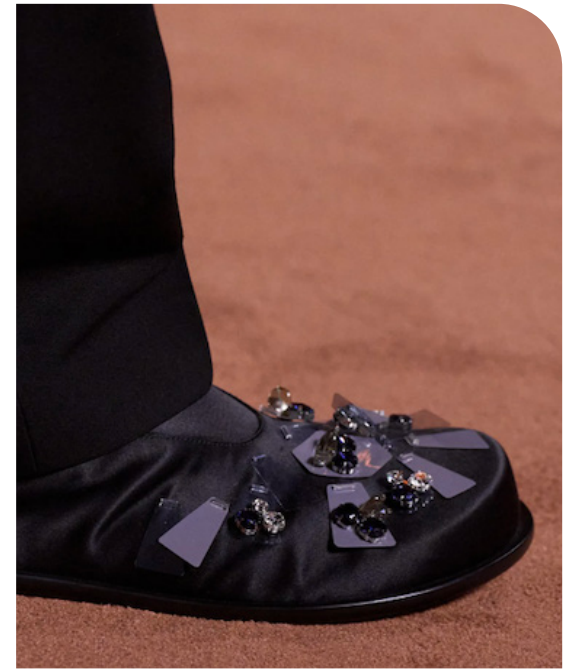
alexander mcqueen 10.png



London Streetstyle 42.jpg



dolce-gabbana-clp-f25-183.jpg



Fendi 70.png



fendi

JEWELLED HARDWARE - CRYSTAL STUDS - GEM EMBELLISHMENTS

EMBOSSED



skorpios.webp



casablanca-clp-f25-069.jpg



burberry-clp-f25-113.jpg



Copenhagen Streetstyle 51.jpg



Ulla Johnson 78.jpg



miista_2.jpg

QUILTED LEATHER - 3D EMBOSSING - MATTE VS GLOSS CONTRAST

VINYL DRAMA



@kassl editions11.png



stella mccartney 32.jpg



chanel-clp-f25-106.jpg



Aloha (6).jpg



blumarine-clp-f25-180.jpg



Saint laurent 54.jpg

ULTRA GLOSS PATENT - PVC COATED - LACQUERED LEATHER

CHAINMAIL



jil-sander-clp-f25-047.jpg



versace-clp-f25-142.jpg



calvin-klein-clp-po-f25-065.jpg



@atcherine1.png



frances_o6.png



vuitton-clp-f25-138.jpg

METAL MESH - RHINESTONE NETS - METALLIC - MICRO-STUDDED

DATA SOURCES & ICONS

TREND GROWTH



MARKET

YEAR ON YEAR TREND
GROWTH ON E-COMMERCE



SOCIAL MEDIA

YEAR ON YEAR TREND
GROWTH ON INSTAGRAM



CONSUMER INTEREST

YEAR ON YEAR GROWTH OF
ONLINE SEARCH VOLUMES



FASHION SHOWS

YEAR ON YEAR TREND
GROWTH ON FASHION SHOWS

TREND BEHAVIOR

EDGY TREND

weak signal of a potential micro
trend with very high risk

EARLY SIGN

emerging trend with growing
perspective but higher risk

SAFE TREND

announced trend with
growing perspective and safe risk

BIG TREND

trend with a big magnitude due to high
commercial potential and quick adaption

STABLE TREND

trend that is already present in
the market with flat growth

LAST CALL

trend with decreasing perspective but
still having business potential

TREND MAGNITUDE



MANIFEST

AN ICONIC PRODUCT THAT IS
A STABLE TREND OF LARGE
MAGNITUDE WITH CONFIRMED
COMMERCIAL SUCCESS



INVEST

A CORE PRODUCT REPRESENTING
A STEADILY GROWING TREND OF
MODERATE MAGNITUDE WITH COM-
MERCIAL POTENTIAL



TEST

A STATEMENT PRODUCT WITH
GROWING PERSPECTIVE BUT
SMALLER MAGNITUDE AND
HIGHER RISK



LIVETREND

THANK YOU!

You may not copy, reproduce, distribute, publish, display, perform, modify, create derivative works, transmit, or in any way exploit any such content, nor may you distribute any part of this content over any network, sell or offer it for sale, or use such content to construct any kind of database. You may not alter or remove any copyright or other notice from copies of the content on any Livetrend report.

**If you have further needs, please
contact us via chat.**