

**FORECAST**  
FW 2026  
**ACCESSORIES**  
**DETAILS**



LIVETREND

# FW26 DETAILS INTRODUCTION



mccartney



iceberg



msgm



versace



## FORECAST

### Embellishments & Intentions

This season's accessories are defined by detail-driven design, where function meets fantasy and surface becomes statement. In Primal Futurism, sculptural soles, technical fastenings, and modular pockets evoke a utilitarian future rooted in raw materiality. Bucolic Slumber leans into quiet craft—soft pleats, whipstitching, and folk-inspired fastenings that feel worn, familiar, and human. Lavish Subversion thrives on contrast and irony: ornamental jewels, metal flourishes, and exaggerated bows distort codes of classic luxury into something camp, curated, and performative. Meanwhile, Dark History drapes accessories in relic-like embellishments—lace, hardware, studs, and velvet all layered with medieval theatricality. Together, these design stories turn accessories into tactile narratives—where every ring pull, strap, sole, or stitch adds character, symbolism, and attitude.

*This forecasting report is based on innovative LIVETREND Data and the expertise of Trend Analysts. The trends in this report are organized by their magnitude and impact. Find the relating icons & stamps on the last slides.*

**ACCESS ALL IMAGES  
CLICKING HERE**



# MACROTRENDS FW26 **OVERVIEW**

## **BUCOLIC SLUMBER**



**COASTAL WHIMSY  
STILLWATER DIARIES  
PRE-COFFEE**

## **LAVISH SUBVERSION**



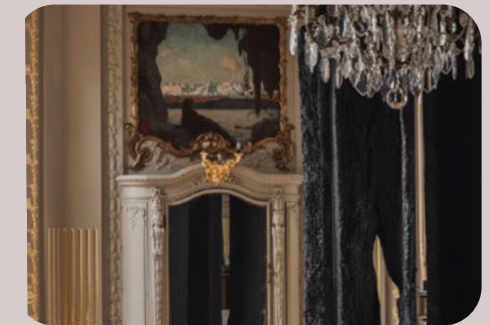
**BOURGEOIS REBELS  
ENCHANTED EVERYDAY  
VELVET HOUR**

## **PRIMAL FUTURISM**



**POST-NATURE  
NOMADIC WHISPER  
SHADOWS OF THE LAND**

## **DARK HISTORY**



**RE-HISTORICAL  
SANCTUM  
SHADOW CIRCUIT**

# BUCOLIC SLUMBER



Stephan Lisowski - Harper\_sBazaar.jpg



@fannyamandanilsson8.png



Thom Brown36.jpg

Bucolic Slumber reinterprets bucolic craft through a poetic, slowed-down lens. Its accessory design details lean into softness, texture, and gentle irregularity—suggesting objects shaped by hand, wear, and the passage of time. The look is one of tactile ease and lived-in comfort. Soft pleating and rounded folds bring movement and dimensionality to leather, mimicking the feel of paper lanterns or folded linen. Folk-inspired details like whipstitching, embroidery, and woven constructions recall domestic crafts, heirlooms, and workwear made beautiful through use. The sense of function is ever-present, but always tender.

Details such as tags, leather string ties, and padlocks feel humble, almost utilitarian—yet curated with a quiet precision. There's a sense of intimacy in these add-ons, like secret signatures on otherwise simple silhouettes. Simplicism rules, with low-heeled shoes, uncomplicated hardware, and round, unembellished forms. Footwear introduces subtle character through reworked classics—updated Mary Janes, rubber-soled loafers, and hybrid brogues with earthy palettes and contrast stitching. These pieces feel local, grounded, and emotionally resonant. Altogether, the accessories under Bucolic Slumber don't shout. They whisper of memory and make-do creativity, echoing the rhythm of a slower life—and offering a tactile antidote to noise and speed.



# SOFT PLEATED



@polene 11.png



Mokki-EditionCraieMokki-EditionCamel.jpg



Harpow-Gesellsh\_380084s/4058490984sswp



ferragamo-clp-f25-083.jpg



Ferragamo\_frg\_det\_mln\_aw25\_049.jpg



Hodakova.png



# FOLK WORK



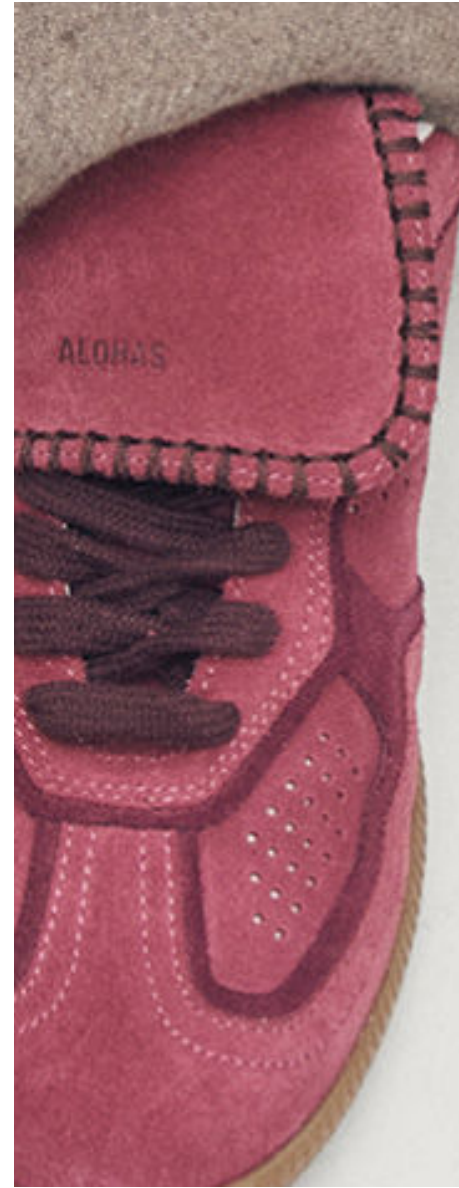
van-noten-clp-f25-072.jpg



etro-clp-f25-108.jpg



mytheresa 3.png



alohas7.png



lncc1.png



mytheres men6.png



# TAGGED



Ferragamo 50.jpg



prada 1.png



mytheresa 17.png



mytheresa men3.png



charles keith 8.png



mytheresa 6.png



# LEATHER STRINGS



max mara



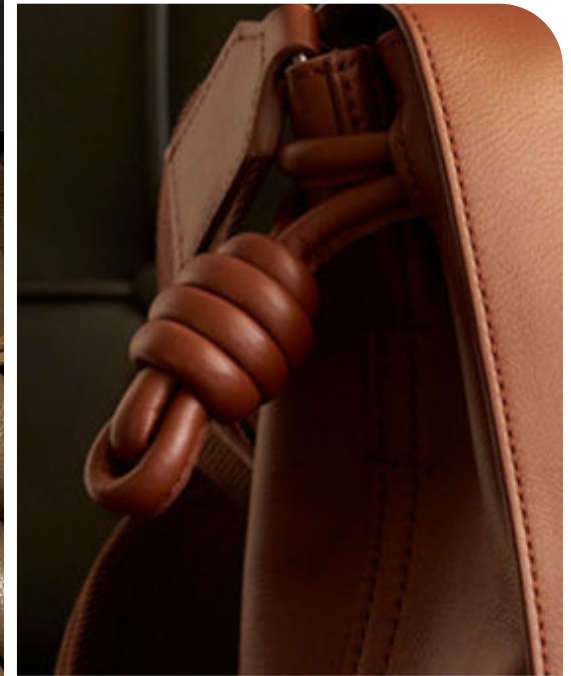
simkhai-clp-f25-062.jpg



alohas12.png



ujoh



mytheres men1.png



dior1.png



# SIMPLICISM



kors-clp-f25-153.jpg



ayede 1.png



Bally 34.jpg



Uma Wang 6.jpg



mm6-clp-f25-148.jpg



nodaletto 5.png



# PADLOCKS



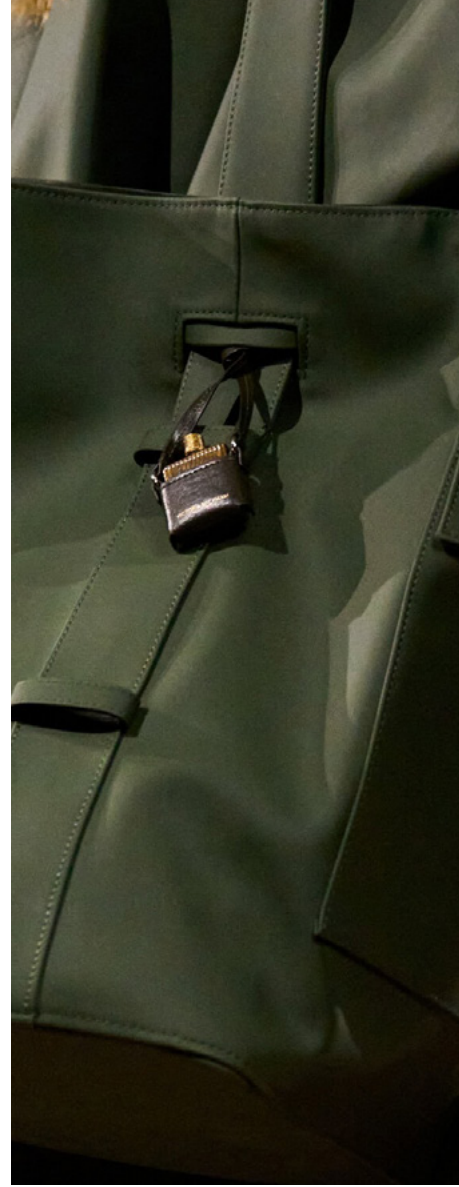
chloe-clp-f25-137.jpg



jordan luca



@givenchy 5.png



beckham



mytheresa 15.png



mytheresa 12.png



# REWORKED CLASSICS



Kronthaler Westwood 10.jpg



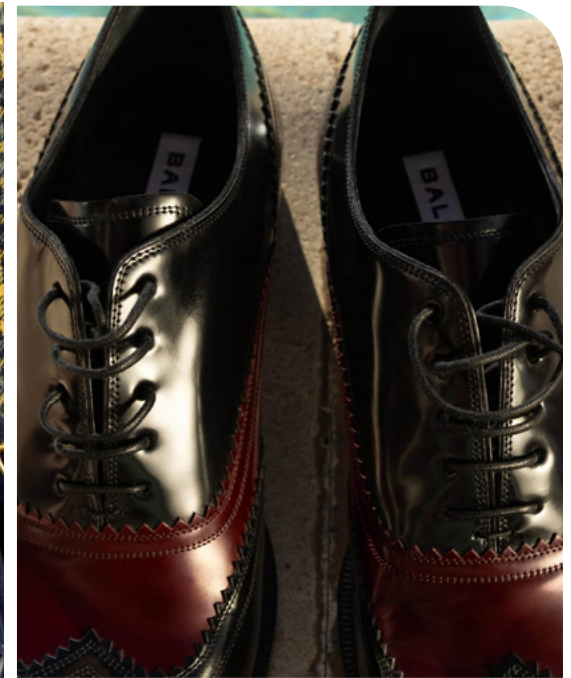
Thom Brown36\_1.jpg



hereu 2.png



thom brown



bally



dhruv kapoor



# PRIMAL FUTURISM



©-tissus-bemz.jpg



E2-SERVICESILVER-MAC.jpg



@leonmanuelblanck.jpg

Primal Futurism manifests in accessories through a balance of utilitarian construction and sculptural restraint. Every detail feels intentional—engineered rather than embellished—leaning into surface and stealth functionality. Outside pockets become a defining feature, turning footwear and bags into modular, tactical objects. These elements speak to survival, mobility, and readiness—while still feeling elevated through sleek design and neutral, earthen tones. Alongside them, neo-industrial accents emerge: chunky clasps, carabiner chains, and mechanical fastenings that fuse hardware aesthetics with wearable architecture. Ring details and circular hardware nod to modernist design, acting as built-in handles, fasteners, or framing devices. Meanwhile, furry accents—though soft—are used sparingly, adding textural contrast to otherwise minimal surfaces.

Soft scrunching adds softness to leather and nylon forms, echoing movement and wear, while minimal studs and technical soles deliver subtle strength—less aggression, more nomadism. Even in their boldness, these touches feel grounded. From hiking gear laces to rubberized traction soles, this trend is about accessories made to navigate unknown terrain—both literal and conceptual. Primal Futurism proves that forward-looking design doesn't require ornament, just clarity of purpose, clean lines, and materials that hold meaning through structure. Rugged, refined, and ready for what's next.



# OUTSIDE POCKETS



off white



off-white-clp-f25-086.jpg



cultgaial.png



tory burch



OffWhite 7.jpg



dior



# NEO INDUSTRIAL



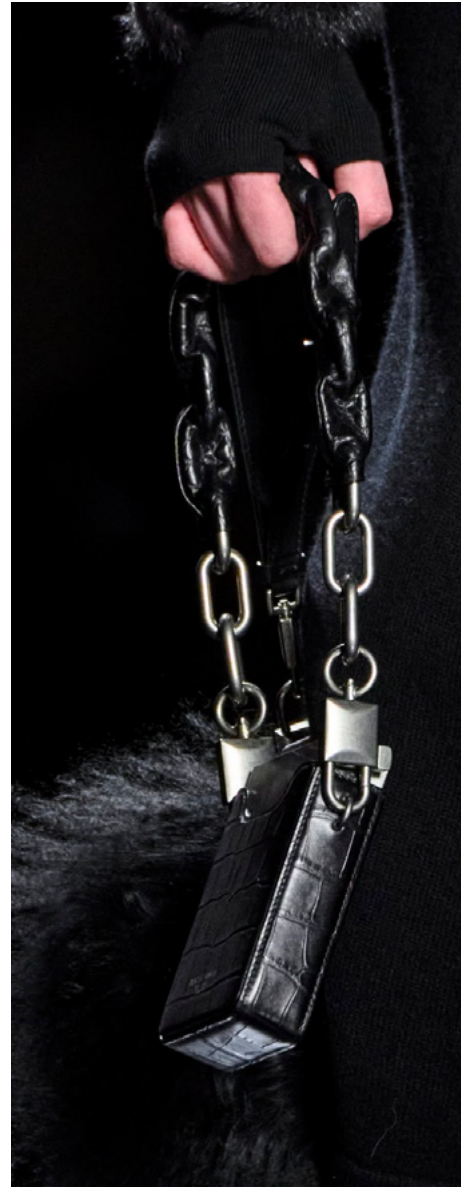
louboutin



jw anderson



Sacai 23.jpg



dg



sacai



dior



# RING DETAILS



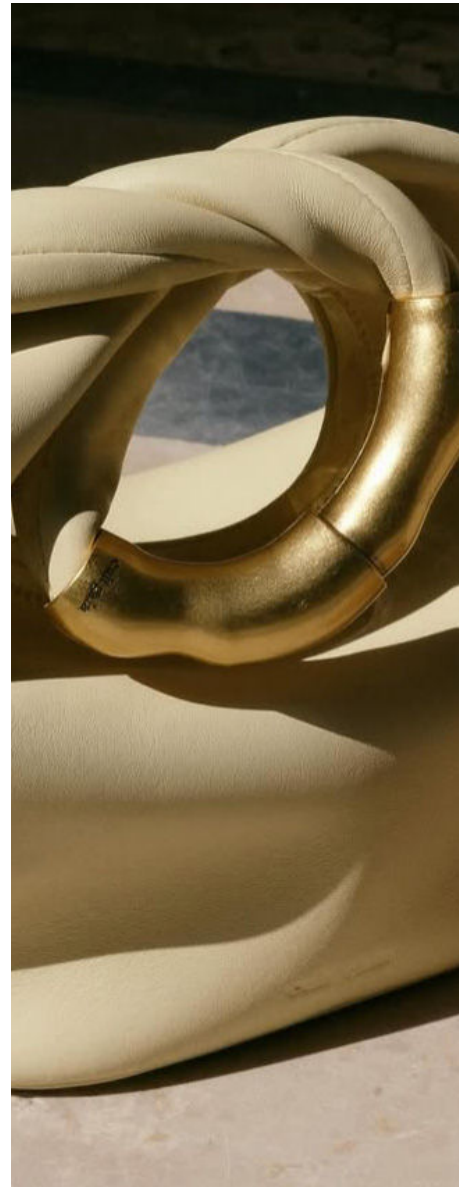
New York Streetstyle 5.jpg



@kuleskapik8.png



mytheresa 14.png



cultgaia13.png



studioamelia\_ (6).jpg



cultgaia9.png



# FURRY DETAIL



chloe \_37.jpg



acnestudios \_26.jpg



Blumarine 64.jpg



@jaded 3.png



hereu 5.png



London Streetstyle 31.jpg



# SOFT SCRUNCH



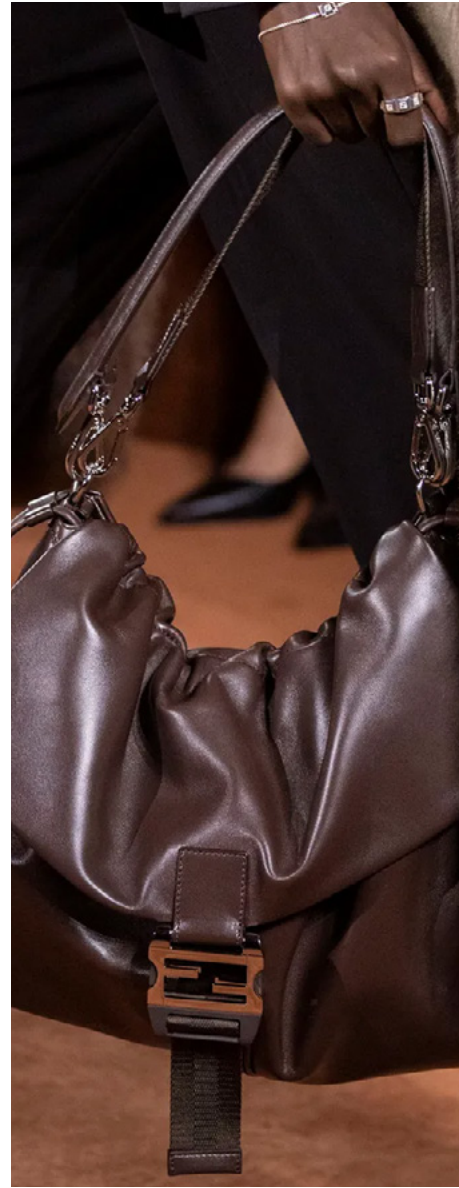
ferragmamo



charles keith 2.png



jil sander 3.png



fendi



Louis Vuitton 44.jpg



balmain 2.jpg



# MINIMAL STUDS



Milano Streetstyle 59.jpg



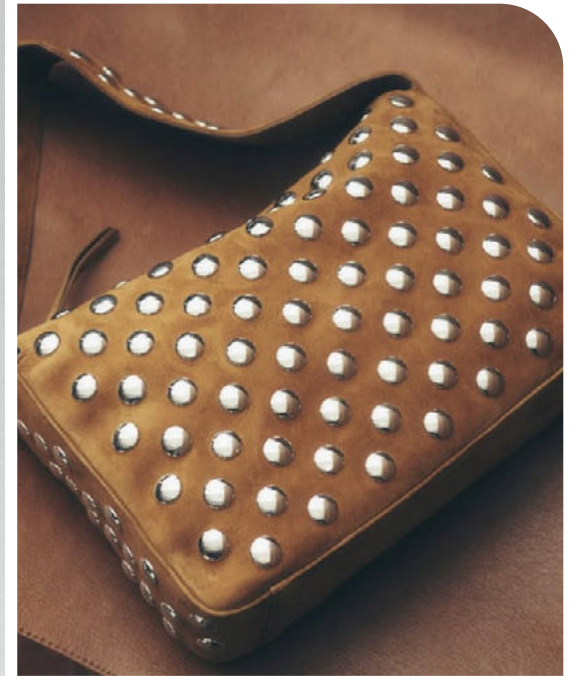
Bally 32.jpg



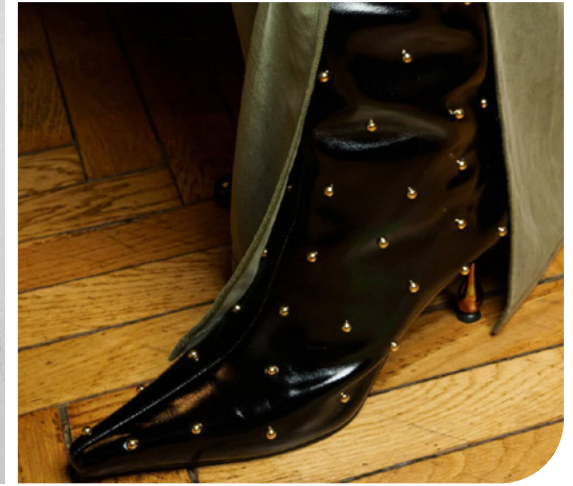
leje 3.png



modaoperandi10.png



modaoperandi8.png



Sara Wong 28.jpg



# NEO RUBBER SOLES



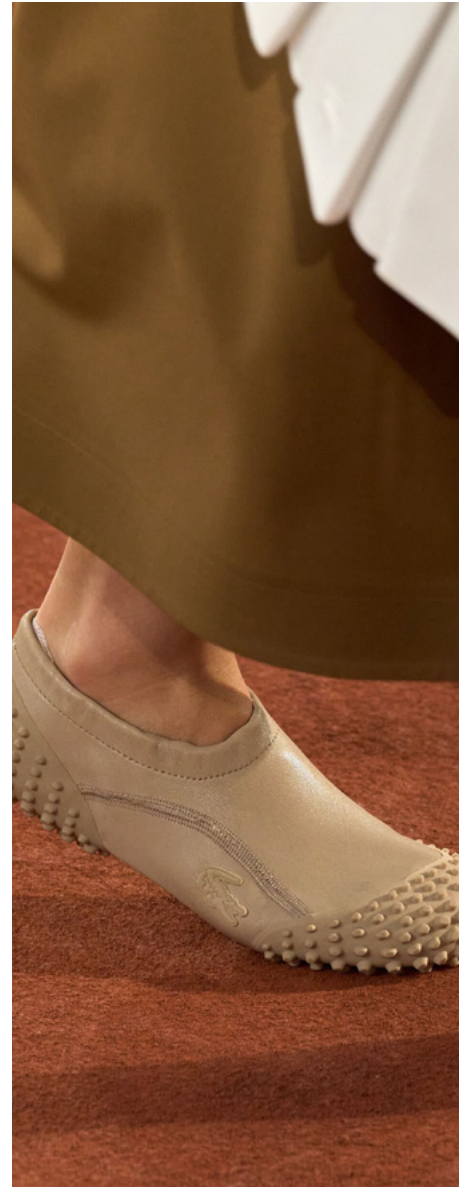
OffWhite 1.jpg



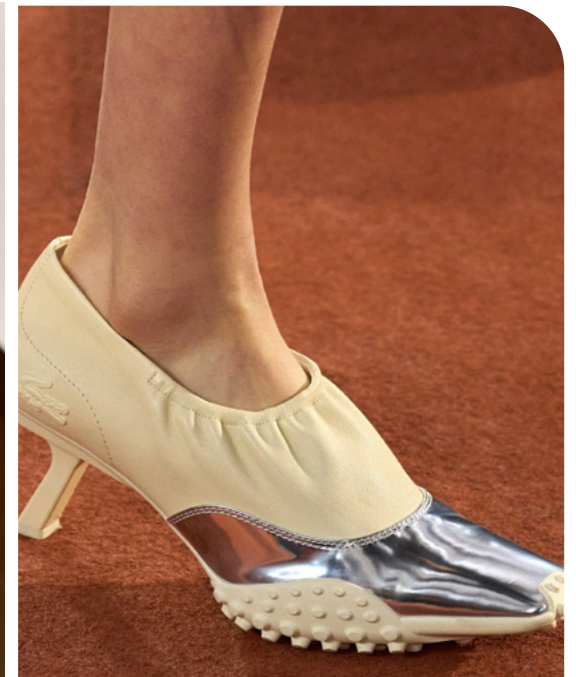
Incc7.png



diesel-clp-f25-230.jpg



Lacoste 51.jpg



lacoste-clp-f25-155.jpg



vuitton-clp-f25-142.jpg



HIKING GEAR



alohas4.png



032c-m-clp-f25-097.jpg



lncc2.png



damaya 4.png



Craie.jpg



mountaineering



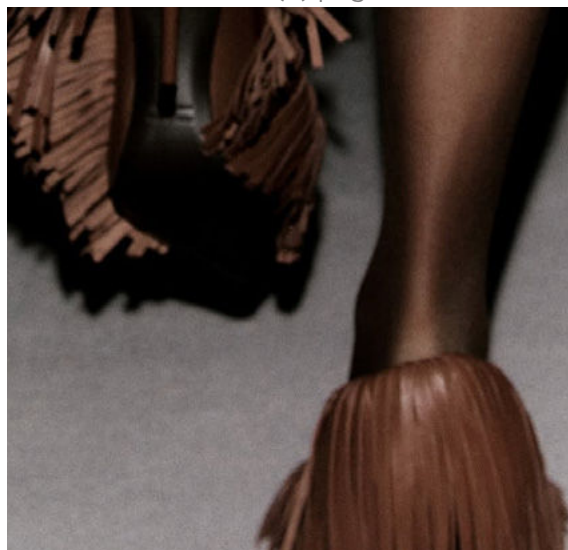
# DYNAMIC FRINGES



Egon Lab.png



Dior (2).png



@thefrankieshop 6.png



sportmax



Veronica Beard 2.jpg



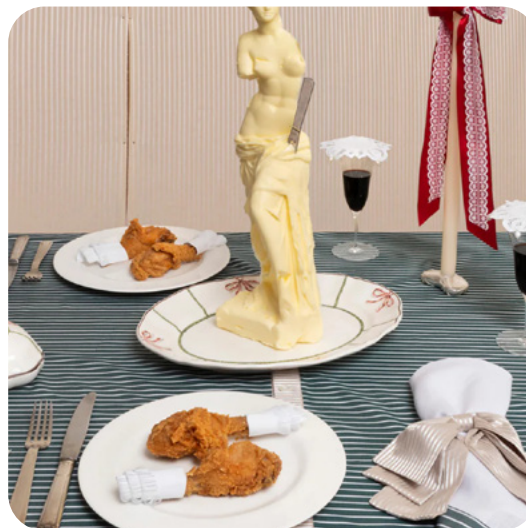
polene 5.png



# LAVISH SUBVERSION



cafe petiole



Gohar-World.jpg



acne.avif

This trend's accessory details embrace a spirit of ornamental mischief—where every clasp, charm, and jewel becomes an opportunity to disrupt elegance with irony and imagination. At the heart of it: a love for adornment, exaggerated and layered to near excess. Metal ornaments take on sculptural forms—floral, anatomical, abstract—appearing as hardware and decoration simultaneously. Collectible-style embellishments, like vintage brooches or trinket buttons, transform bags and loafers into personal archives, dripping with nostalgic wit. Opulent jewels go beyond sparkle, blooming into clusters on socks, heels, and handbags with costume-drama intensity.

There's also a childlike charm in plush animal add-ons, turning the high-fashion handbag into a platform for play. Bouquet attachments—crafted in leather or beads—introduce a surreal twist on romantic tropes, while chains swing between bondage and bourgeois chic. Elsewhere, micro buckles appear on shoes and bags in clustered repetition—miniature, controlled, but deliberately visible. It's not just embellishment—it's satire wrapped in sparkle. This trend is about collecting, curating, and piling on symbolism with precision and humor. Accessories here are a canvas of contradictions: precious yet playful, maximal yet stylized. It's not just about looking adorned—it's about looking intentionally over-adorned.



# METAL ORNAMENTS



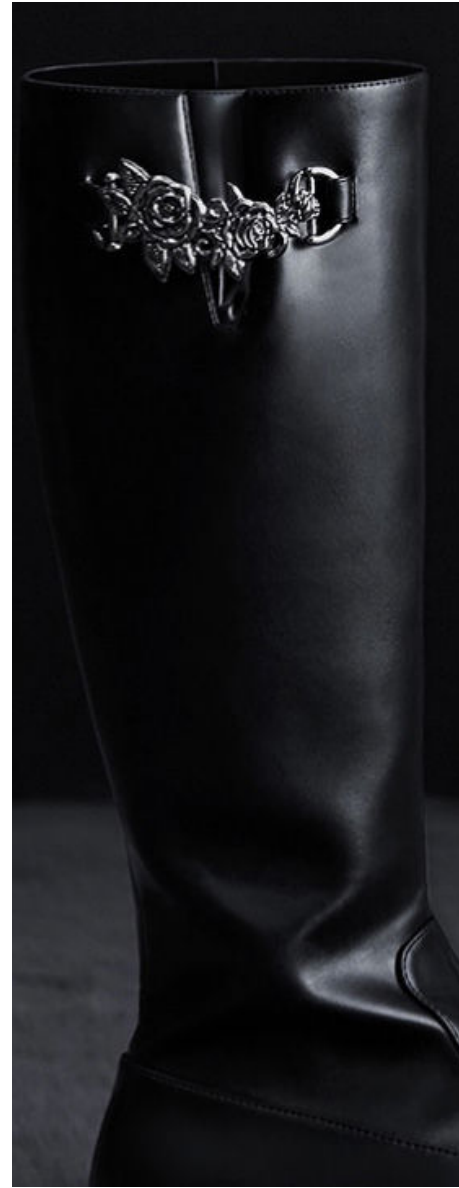
blumarine-clp-f25-100.jpg



tory-burch-clp-f25-115.jpg



cultgaia8.png



charles keith 1.png



roberto cavalli



Giuseppe Di Morabito 78.jpg



# COLLECTIBLES



@sirraharchive1.png



lncc3.png



cult gaia.jpg



acne-clp-f25-118.jpg



veronica beard



toga-clp-f25-101.jpg



# OPULENT JEWELS



Simone Rocha 20.png



charles keith 4.png



ulla johnson



Fendi 27.png



Chanel 41.jpg



casablanca brand 10.jpg



PLUSH ANIMALS



london streetstyle



rebeccaferrazwyatt5.png



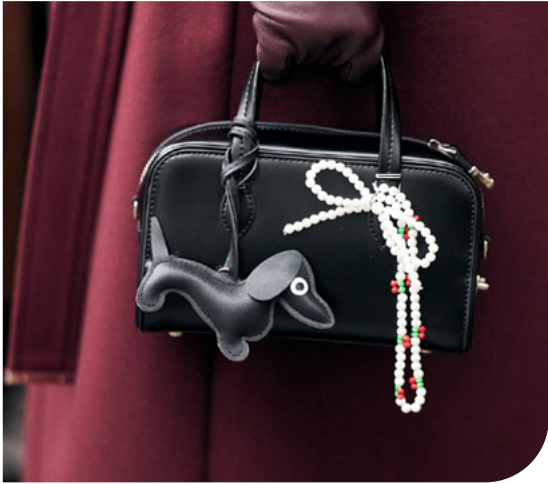
coach-clip-f25-069.jpg



versace



New York Streetstyle 26.jpg



streetstyle



# BOUQUET ADD-ONS



Versace 69.jpg



herrera-clp-f25-116.jpg



Saint laurent 51.jpg



@cristinachenii2.png



cultgaia2.png



@priveaffair 9.png



# CHAIN ELEMENTS



London Streetstyle 13.jpg



dsquared2



pinterest inspo17.jpg



Benmoyal 3.jpg



valentino



mytheresa 5.png



# MICRO BUCKLES



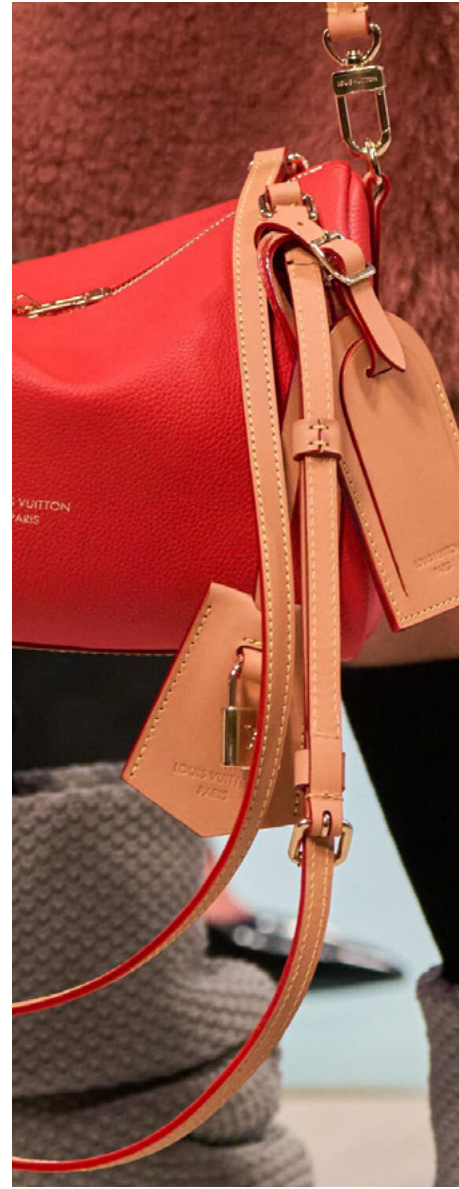
Elisabetta Franchi 48.jpg



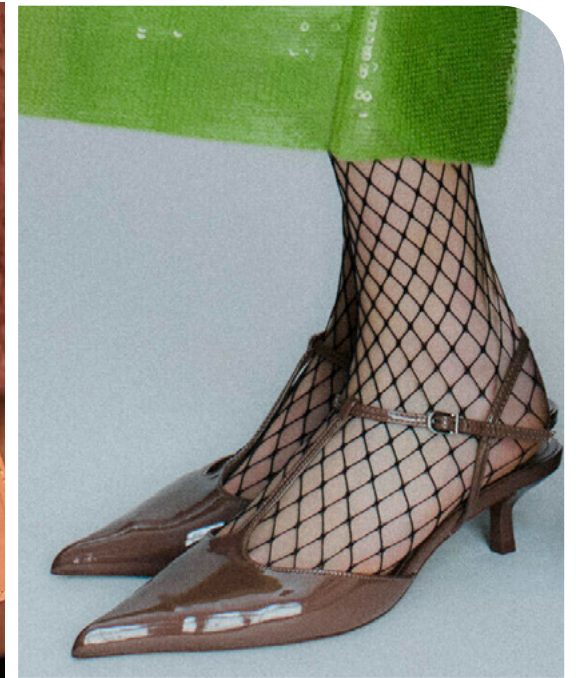
prada 2.png



Iceberg 65.jpg



vuitton



huishang zhang



@orr\_official\_\_orr\_official.jpg



# FANCY RIBBONS



alohas1.png



avavav-clp-f25-076-scaled.jpg



mytheresa 9.png



alohas14.png



no21



Aloha (3).jpg



# DARK HISTORY



@matteocapirola.png



burberry



dior

This trend's accessory details lean into bold silhouettes, dark elegance, and a sense of constructed drama. Footwear and bags are no longer quiet accompaniments—they're statements. The heel takes center stage, with warped, twisted, and sculptural shapes that defy gravity and expectation. From curved "hoof-like" bases to sharp, inverted arches, these forms distort the familiar, merging elegance with subversion. Geometric accents—spheres, rods, and cones—introduce architectural tension, while gaiter-style boots offer a nod to historical utility, echoing cavalry and ceremonial dress. Belted details cinch and strap accessories into place, imbuing them with a sense of function-as-decoration.

Eyelets and lace-up constructions feel both crafted and subversive, reminiscent of medieval corsetry or combat attire. They add texture, modularity, and a handcrafted feel to even the sleekest forms. Abstract bows and oversized knotting redefine femininity—less pretty, more powerful. Finally, the emergence of dark creature toes—elongated, squared, or clawed—suggests a darker fantasy, a footnote from folklore. These details collectively evoke a wardrobe of characters: rebels, witches, warriors, and women who wear their accessories like armor. In this world, darkness doesn't conceal—it reveals. Accessories become artifacts, worn like secrets.



# TWISTED HEELS



tory burch



@recto3.png



saint laurent



SS Daley 38.jpg



Alexander McQueen.JPG



modaoperandi1.png



# DARK CREATURE TOES



Sportmax 82.jpg



@paulacanosdeldvas\_\_paulacanosdeldvas.jpg



Victoria Beckham 5.jpg



stella mccartney 32.jpg



miista1.png



AMINA MUADDI (5).jpg



# EYELETS



shoatzy chen



@ganni 6.png



ludovic de saint sernin



blumarine



w12.jpeg



silfie



# MEDIEVAL LACE-UP



dior 80.jpg



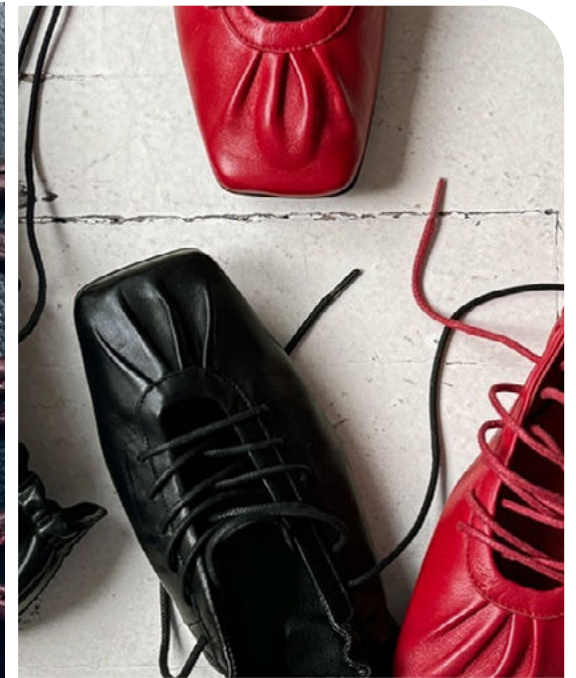
chylaks bags1.png



damaya 3.png



magda butrym 4.png



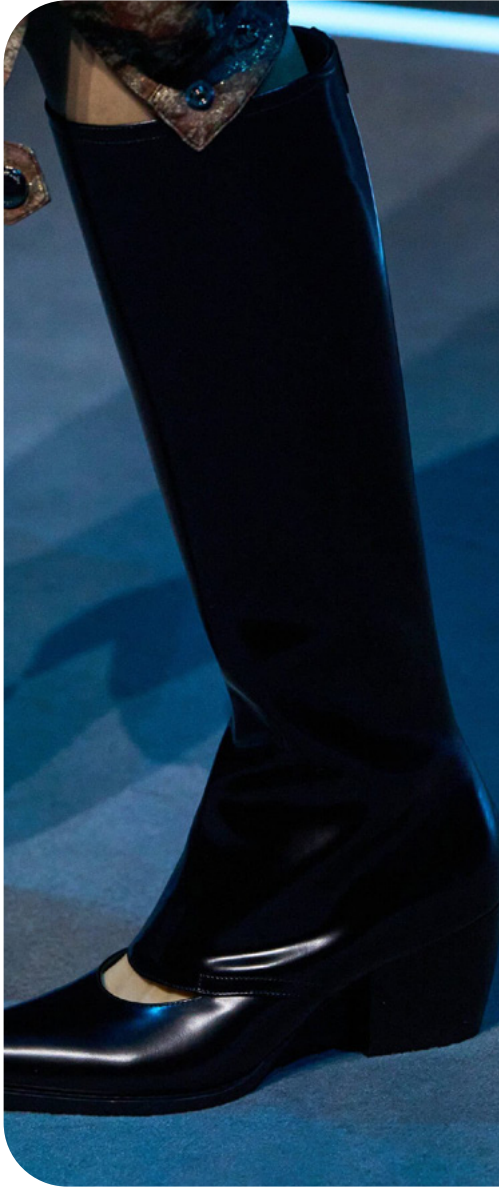
alohas2.png



dior3.png



# GAITERS



dior



Twinset 54.jpg



shiatzy



mytheresa 10.png



Acne.png



charles keith 3.png



# GEOMETRIC FEATURES



Copenhagen Streetstyle 10.jpg



chanel-clp-f25-159.jpg



modaoperandi



charles keith 7.png



ferragamo



ashlyn



# BELT DETAILS



dolce-gabbana-clp-f25-161.jpg



hed-mayner-m-clp-f25-068.jpg



Nanushka\_nsk\_nyc\_aw25\_014.jpg



Balmain\_blm\_prs\_pre\_fall\_2025\_041.jpg



Antonio\_Marras\_mrs\_det\_mln\_aw25\_203.jpg



sacai-clp-f25-063.jpg



# ABSTRACT BOWS



dior-m-clp-f25-108.jpg



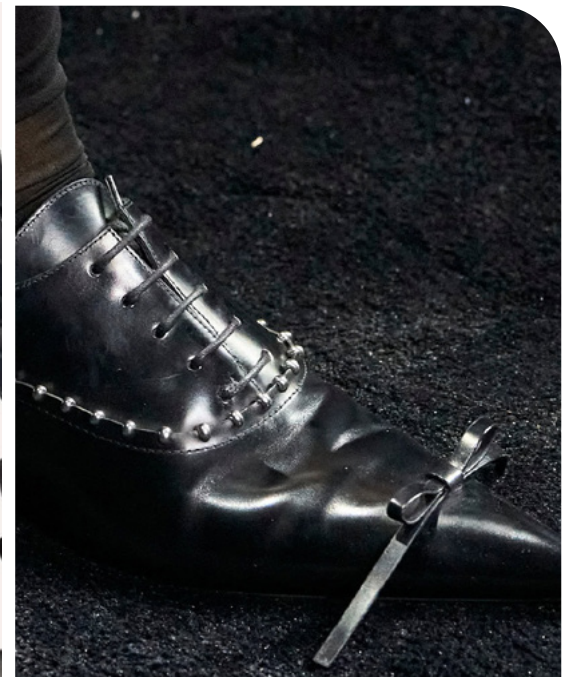
Camper.png



n-21-bks-f25-132.jpg



Completed\_Works\_Ecomm.png



jil-sander-clp-f25-085.jpg



alohas10.png



# DATA SOURCES & ICONS

## TREND GROWTH



### MARKET

YEAR ON YEAR TREND  
GROWTH ON E-COMMERCE



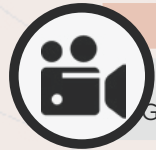
### SOCIAL MEDIA

YEAR ON YEAR TREND  
GROWTH ON INSTAGRAM



### CONSUMER INTEREST

YEAR ON YEAR GROWTH OF  
ONLINE SEARCH VOLUMES



### FASHION SHOWS

YEAR ON YEAR TREND  
GROWTH ON FASHION SHOWS

## TREND BEHAVIOR

### EDGY TREND

weak signal of a potential micro  
trend with very high risk

### EARLY SIGN

emerging trend with growing  
perspective but higher risk

### SAFE TREND

announced trend with  
growing perspective and safe risk

### BIG TREND

trend with a big magnitude due to high  
commercial potential and quick adaption

### STABLE TREND

trend that is already present in  
the market with flat growth

### LAST CALL

trend with decreasing perspective but  
still having business potential

## TREND MAGNITUDE



### MANIFEST

AN ICONIC PRODUCT THAT IS  
A STABLE TREND OF LARGE  
MAGNITUDE WITH CONFIRMED  
COMMERCIAL SUCCESS



### INVEST

A CORE PRODUCT REPRESENTING  
A STEADILY GROWING TREND OF  
MODERATE MAGNITUDE WITH COM-  
MERCIAL POTENTIAL



### TEST

A STATEMENT PRODUCT WITH  
GROWING PERSPECTIVE BUT  
SMALLER MAGNITUDE AND  
HIGHER RISK





LIVETREND

# THANK YOU!

You may not copy, reproduce, distribute, publish, display, perform, modify, create derivative works, transmit, or in any way exploit any such content, nor may you distribute any part of this content over any network, sell or offer it for sale, or use such content to construct any kind of database. You may not alter or remove any copyright or other notice from copies of the content on any Livetrend report.

**If you have further needs, please  
contact us via chat.**