



WOMENSWEAR
SS26 UPDATE
TOPWEAR

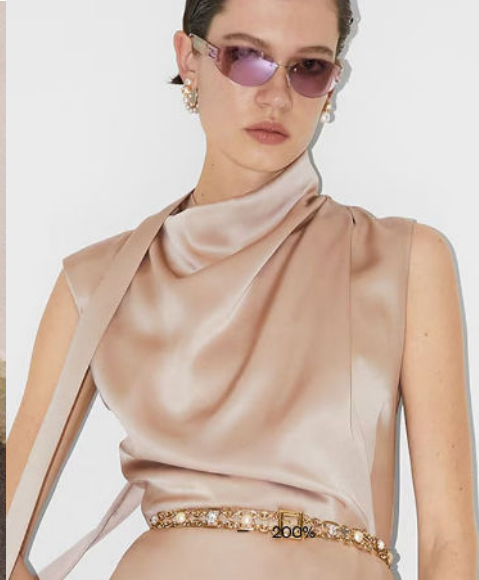


LIVETREND

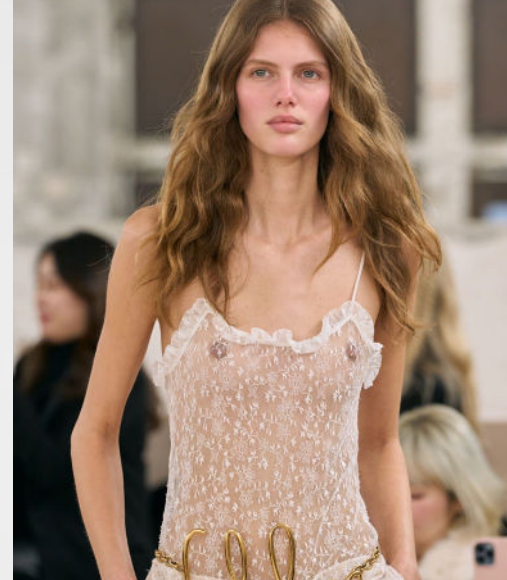
SS26 TOPWEAR UPDATE **INTRODUCTION**



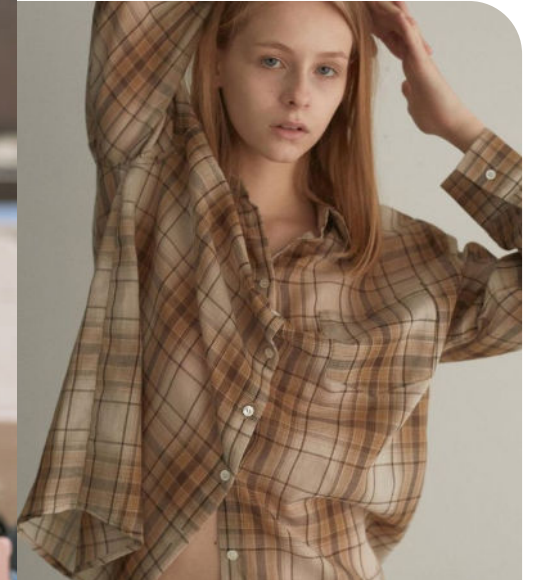
Zara (11).jpg



Emili Sindlev



Chloe-.avif



Lesatelier.png



UPDATE

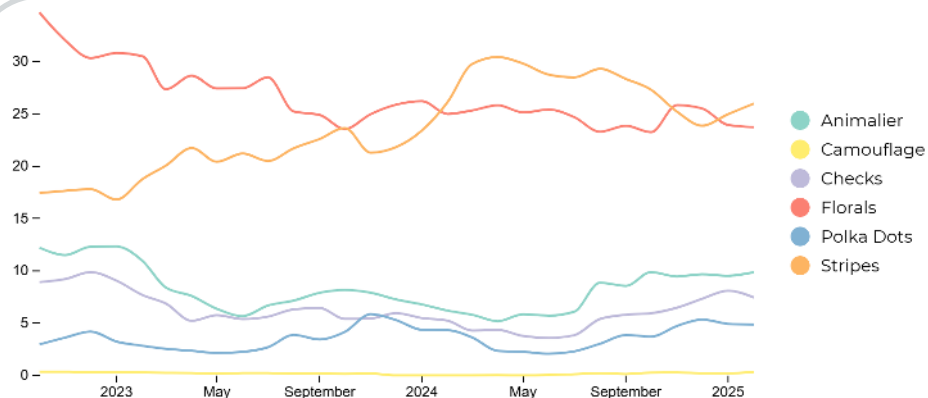
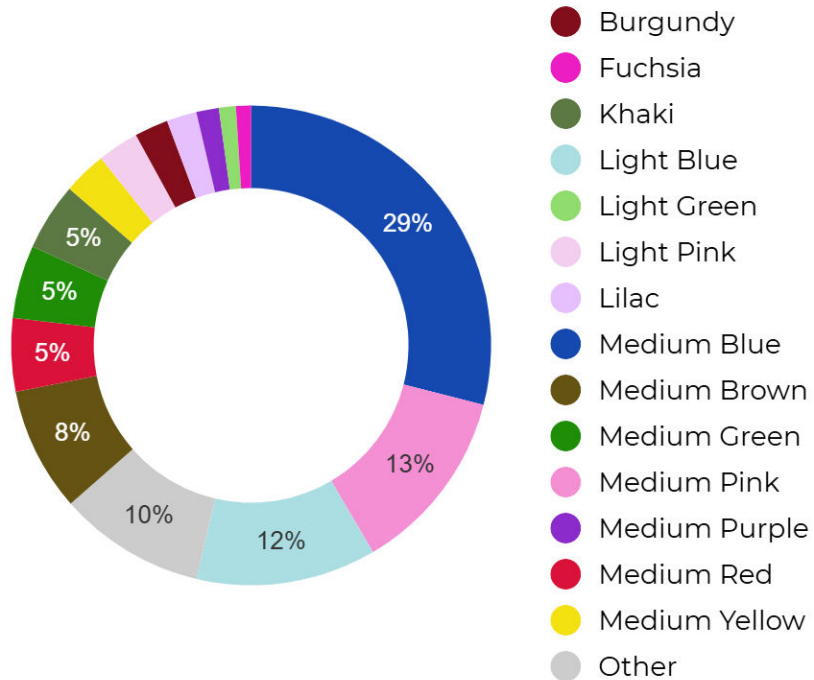
Nostalgic Nuances For SS26, shirts and blouses will embrace a new romantic wave, blending boho spirit with fresh volumes and intricate details. Designers will explore a fusion of ladylike vibes and fitted silhouettes, expanding into softer, fluid lines while retaining structure. New necklines will introduce maritime preppy influences, offering opportunities to experiment with innovative collar styles, while romantic ties and scarved collars will continue to play a key role, infusing movement and texture into minimalist designs. Draped features will maintain their presence, allowing for flow within structured garments, while asymmetries and cape-like topwear will introduce an element of unpredictability and lightness. This collection will strike a balance between refined tailoring and relaxed, creative details, where fitted blazers, crop boxy styles, and oversized elements will layer together to create sophisticated yet approachable looks. Designers will be tasked with finding harmony in this mix, crafting garments that seamlessly merge tailored minimalism with artistic freedom, offering a modern narrative of femininity that speaks to both nostalgia and innovation.

This report is based on Livetrend data extracted from Instagram, e-commerce and consumer interest on Spring Collections 2025, analyzing the visibility and growth of the trends compared to the same period last year. The percentages show the evolution year on year.

**ACCESS ALL IMAGES
CLICKING HERE**

SPRING 26 TOPWEAR UPDATE **KEY DATA**

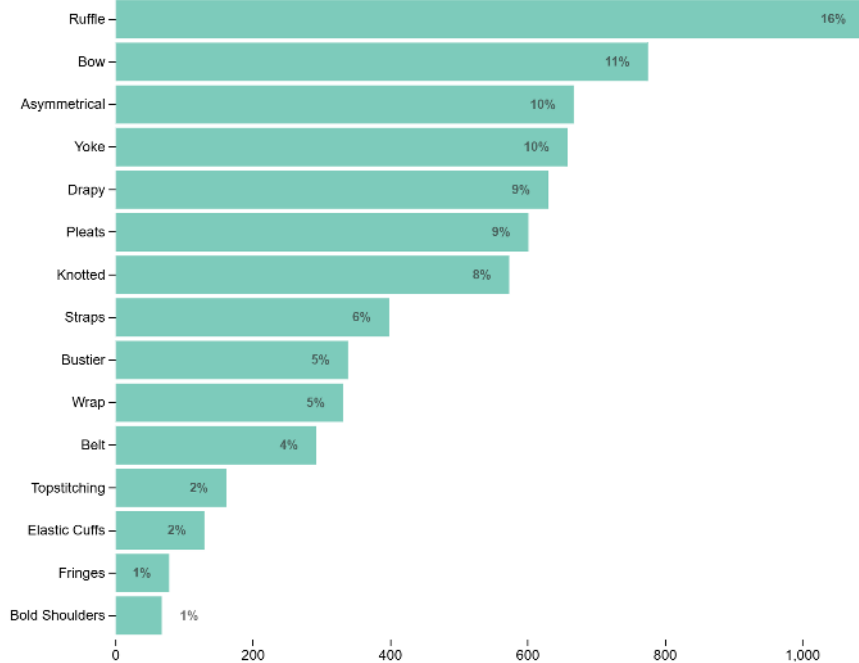
TOPWEAR COLORS & PRINTS



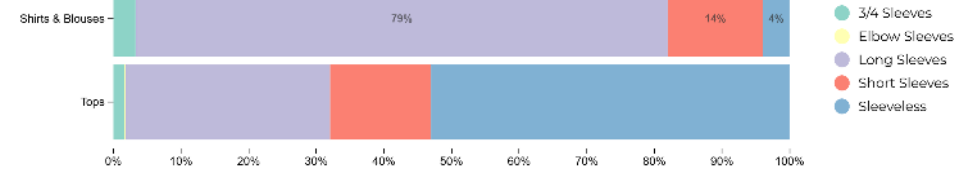
The current range features a dominant classic navy blue, followed by pink and light blue. Meanwhile, there is a notable shift toward more nuanced tones like burgundy and darker pinks, as vibrant “pop” hues begin to wane. This suggests that for Spring 2026, designers may explore richer, more sophisticated color palettes that balance classic and fashion-forward shades. For patterns, after a period where plain textiles prevailed, patterns are slowly making a comeback. Classic motifs such as stripes, checks, and polka dots are on the rise, pointing toward a renewed appreciation for timeless prints. Going into Spring 2026, brands can leverage these established patterns to add subtle yet impactful visual interest to topwear collections.

SPRING 26 TOPWEAR UPDATE **KEY DATA**

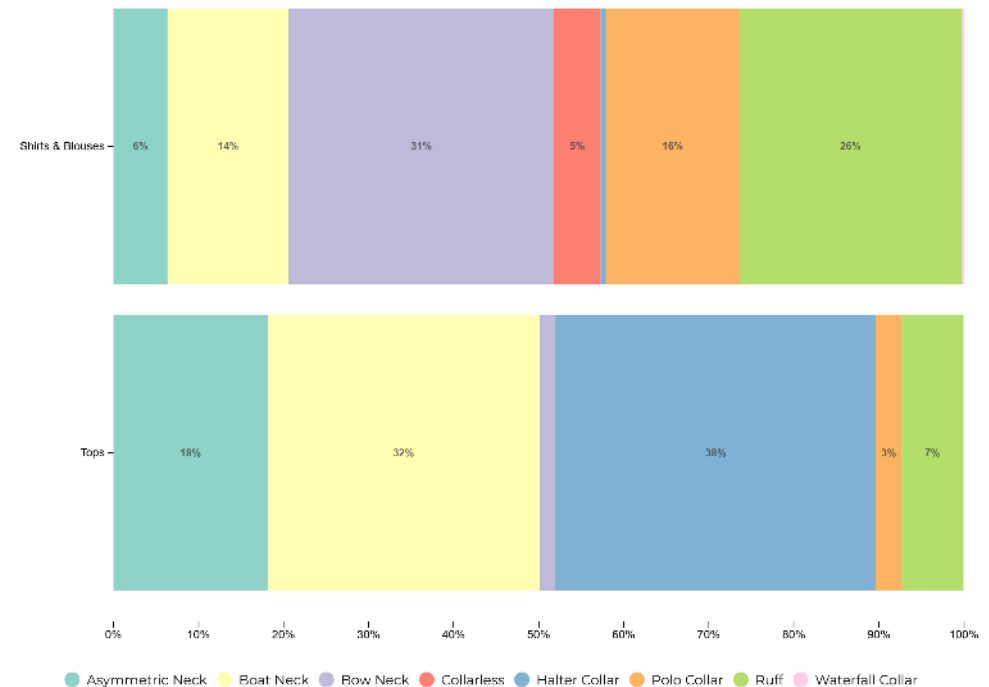
TOPWEAR DETAILS & TRIMS



TOPWEAR SLEEVES LENGHTS



TOPWEAR NECKLINES



Long sleeves remain dominant for shirts and blouses (79% market share), while tops showcase a more diverse range, including sleeveless and short sleeves. Necklines highlight versatility, with boat necks (32%) and polo collars (38%) leading, followed by asymmetric and halter styles. As SS26 approaches, expect a continued focus on elegant draping and adaptable designs that enhance both comfort and style. For details, romantic and structured elements shape the season, with ruffles (16%), bows (11%), and asymmetrical cuts (10%) leading the way. Draped and pleated designs (9%) add movement, while knotted details (8%) and wrap constructions (5%) emphasize fluidity. For SS26, this balance of softness and structure suggests an evolution toward refined yet expressive silhouettes.

SS26 TOPWEAR UPDATE **MUST-HAVES SPOTLIGHT**



CORPORATE SHIRT



Zara (2)_1.jpg

GRUNGE SHIRT



UrbanRevivo25.png

DRAPED STYLE



cos.avif

BOHO BLOUSE



Zara (3).jpg

LADY FIT



jacquemus-.avif

This Trend Spotlight proposes the must-have products of the season to build the right assortment.

This selection is made to ensure that you have the right collection staples, invest in the right core pieces and test the right trendy items within your product range.

Find the full list of seasonal core items on the next slides.



WOMENSWEAR
SS26 UPDATE
TOPWEAR
CORE ITEMS



LIVETREND

BIG TREND

SS26 SHIRTS & BLOUSES **SPRING GRUNGE**

www
+60%
YOY



Vivabrown.png



Moonfairy.png



UrbanRevivo25.png



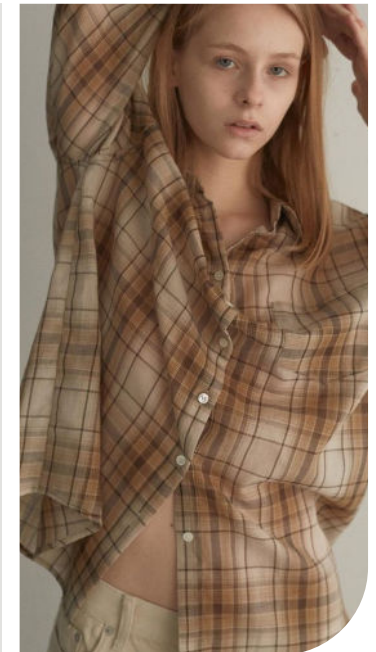
Calie.png



siedres.jpg



Notsonormal.jpg



Lesatelier.png

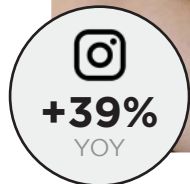
+42%
YOY

EARLY SIGN

SS26 SHIRTS & BLOUSES **FITTED LADY LOOKS**



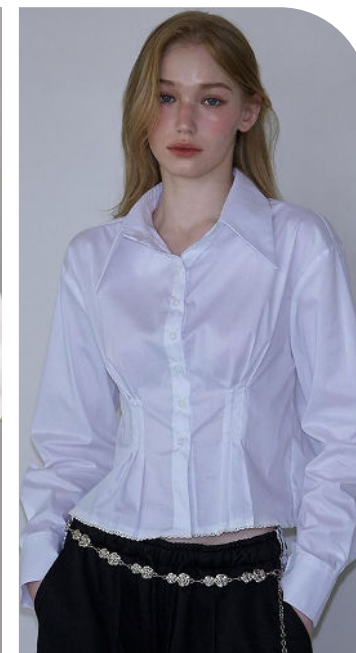
Lautredemin.png



Rose frantz.png



Porridge.webp



Rosefrantz.png



Alexander Wang.jpg



Onska.png



&Otherstories_1.jpg

SS26 SHIRTS & BLOUSES

EARLY SIGN

FLOUNCY BOHO

SAFE TREND

ROMANTIC BOHO



Reserved (4).avif



Zara (3).jpg



zimmermann.jpg



&Otherstories.jpg



&Otherstories (2).jpg



Anthropologie.webp

SS26 SHIRTS & BLOUSES

SAFE TREND

COTTAGE BUTTONED-UP

EARLY SIGN

MARITIME SHIRT



Joorti.png



cestmoidew.png



Spell.webp



Opening Sunshine.png



Pilcro.webp



Vincentnavy.png

SS26 SHIRTS & BLOUSES **DENIM SHIRTS**

SAFE TREND

BLUE COLLAR

SAFE TREND

FITTED STYLE

WWW
+80%
YOY



zara_1.jpg



Nilby.png

IG
+10%
YOY



chloe.avif



sezane.avif



Nanushka.webp



@thisiswhistles.png

SS26 SHIRTS & BLOUSES DETAILS

STABLE TREND

WRAPPED

SAFE TREND

DELICATE TIED

WWW
+50%
YOY



@sir.png



kallmeyer.jpg



rohe.jpg

WWW
+350%
YOY



all-that-remains.jpg



rohe_1.jpg



Urban Revivo 21.png

WWW
+29%
YOY

SS26 SHIRTS & BLOUSES

BIG TREND

ELEGANT DRAPED

SAFE TREND

TIED NECK



Maison De Ines.png



Kindersalmon.png



Loie.png



Mohan.png



Isseymyake.jpg



martin-grant.jpg

SS26 TOPS

EARLY SIGN

LONG TAILORED VEST

EARLY SIGN

BOXY ELBOW SLEEVE


+120%
YOY




+95%
YOY

lhr.png



Re Rhee.png



new-york-str-f25-0886.jpg


+40%
YOY



Zara (4).jpg



Tibi.webp



Ruhad.jpg

SS26 TOPS

EARLY SIGN

FLARED SLEEVELESS

EDGY TREND

ASYMMETRIC CAPE TOP



jacquemus-.jpg



third-form.jpg



birrot.jpg



ferragamo.jpg



sophie-et-voila.jpg



@cultgaia.png

SS26 TOPS

EARLY SIGN

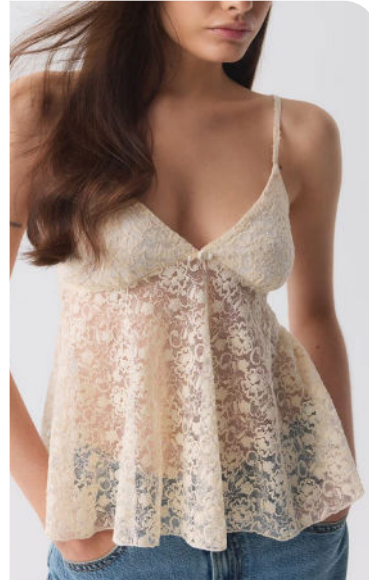

+550%
YOY



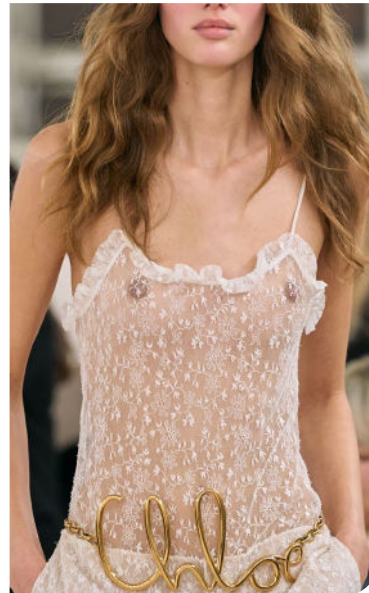

+14%
YOY

Zara (2).jpg

LACE CAMI



Gina tricot.avif



Chloe-.avif

SAFE TREND


+50%
YOY



Urban Revivo 23.png



@vorniic.webp

SOFT BOXY TOP



Zara.jpg

DATA SOURCES & ICONS

TREND GROWTH



MARKET

YEAR ON YEAR TREND
GROWTH ON E-COMMERCE



SOCIAL MEDIA

YEAR ON YEAR TREND
GROWTH ON INSTAGRAM



CONSUMER INTEREST

YEAR ON YEAR GROWTH OF
ONLINE SEARCH VOLUMES



FASHION SHOWS

YEAR ON YEAR TREND
GROWTH ON FASHION SHOWS

TREND BEHAVIOR

EDGY TREND

weak signal of a potential micro
trend with very high risk

EARLY SIGN

emerging trend with growing
perspective but higher risk

SAFE TREND

announced trend with
growing perspective and safe risk

BIG TREND

trend with a big magnitude due to high
commercial potential and quick adaption

STABLE TREND

trend that is already present in
the market with flat growth

LAST CALL

trend with decreasing perspective but
still having business potential

TREND MAGNITUDE



MANIFEST

AN ICONIC PRODUCT THAT IS
A STABLE TREND OF LARGE
MAGNITUDE WITH CONFIRMED
COMMERCIAL SUCCESS



INVEST

A CORE PRODUCT REPRESENTING
A STEADILY GROWING TREND OF
MODERATE MAGNITUDE WITH COM-
MERCIAL POTENTIAL



TEST

A STATEMENT PRODUCT WITH
GROWING PERSPECTIVE BUT
SMALLER MAGNITUDE AND
HIGHER RISK



DATA TO DRIVE

01 CREATIVITY

02 STRATEGY

03 SUSTAINABILITY



LIVETREND

THANK YOU!

You may not copy, reproduce, distribute, publish, display, perform, modify, create derivative works, transmit, or in any way exploit any such content, nor may you distribute any part of this content over any network, sell or offer it for sale, or use such content to construct any kind of database. You may not alter or remove any copyright or other notice from copies of the content on any Livetrend report.

**If you have further needs, please
contact us via chat.**