



SPRING/SUMMER
2026
FORECASTING
FOOTWEAR

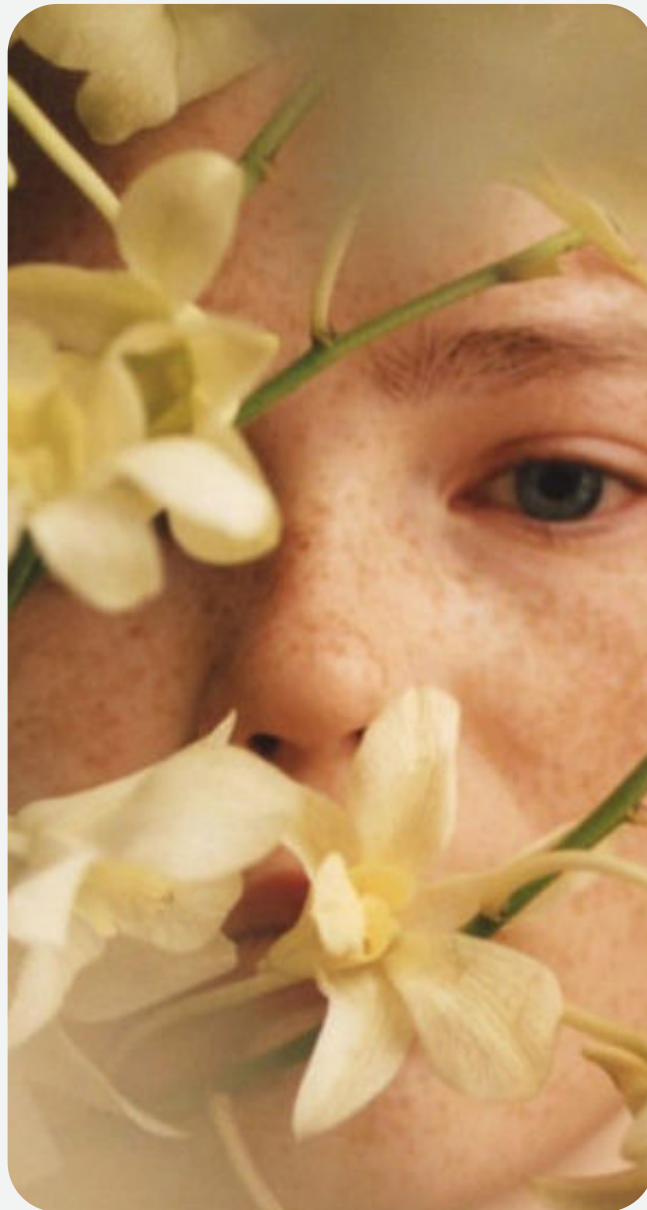


LIVETREND

SS26 INTRODUCTION



SPRING / SUMMER 2026 FOOTWEAR



Powershifts.

As we navigate towards 2026, our global context is still marked by profound challenges that threaten the balance of our societies and our planet. Our daily life remains increasingly difficult amid environmental degradation, socio-economic instability, and rapid technological changes - a cultural erosion of certainties.

In this turbulent landscape, confronting critical issues is becoming not only necessary but essential. In 2026, we are invited to redefine our difficulties as opportunities to push back limits. These challenges will become a source of hope and meaning by revealing contrasts that are needed to appreciate the beautiful aspects of life. A shift in perspective transforms challenges into a fundamental virtue, allowing us to take both small and significant steps towards a better future.

Because challenge means change, things begin to shift. The new season comes with an evolutionary nature, emphasizing soft resistance and sensitive transformation as a response to this uncertain period. New transitions re-prioritize what truly matters: family, meaningful relationships, physical health, and inner well-being. Sobriety, which has long been valued as a necessity, is now enriched by human emotion and profound connection. These enduring values are coming to the forefront, highlighting the significance of lasting, meaningful aspects of life over fleeting concerns.

The SS26 Powershifts encourages a transformative journey towards a more balanced, emotionally enriched, and purpose-driven existence, leveraging discomfort and change to achieve true well-being.

[ACCESS ALL IMAGES
CLICKING HERE](#)

SS26 TRENDS OVERVIEW

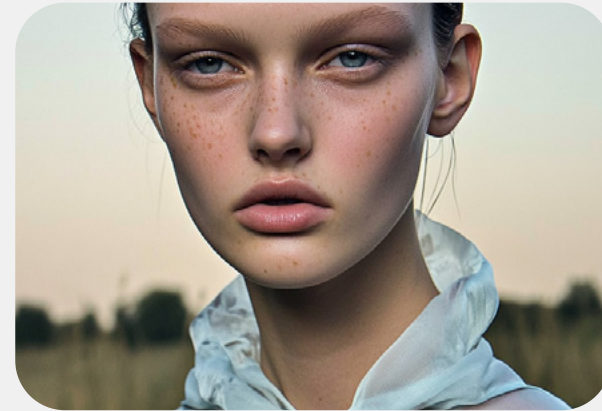
SPRING / SUMMER 2026 FOOTWEAR

RETRO SURREALISM



QUAINT
TIMELESS CHIC
BOLD-PREP

SERENE ELEMENTS



WEIGHTLESS
TECH-TURE
SYMBIOSIS

MOONBATH



ANCIENT FLOW
NEO-PRIMAL
TRUTH SEEKER

WHIMSICAL GRUNGE



DISRUPTIVE DREAM
YOUTH
URBAN ROMANCE



RETRO SURREALISM

The SS26 footwear trend Retro Surrealism blends elements of nostalgia and surrealism, creating a captivating world where time seems suspended. With its whimsical blend of bold hues and playful designs, this trend is rooted in a sense of fun naivety and timeless charm. It evokes the spirit of quaint resorts from the past, where wide-eyed adventure meets melancholy moments of introspection.

The color palette of Retro Surrealism includes dark browns and navy for grounding and depth, while bolds or pastels like zesty yellow, pink, lilac, and resort blues bring in freshness and energy. These vibrant tones are a nod to the carefree, idyllic atmospheres of vintage holidays, while the contrast between deep and soft shades creates a surreal juxtaposition, inviting exploration of both the past and future.

Materials play an essential role in giving Retro Surrealism its unique, nostalgic edge. Classic woven fabrics evoke a sense of resort leisure, while patent leathers, satins, and clean canvas lend a more refined, old money feel. These materials contribute to a sophisticated yet relaxed aesthetic, perfectly suited to a timeless, vacation-inspired look.

Details further amplify the surreal and retro character of the trend: contrasting toe caps add a playful, bold edge, while naive charms and retro piping bring a youthful, nostalgic flair. Minimal branding allows the design to shine with understated luxe, giving a fresh yet familiar look that feels both personal and unique.

Ultimately, Retro Surrealism is all about embracing a carefree, optimistic vibe, while subtly nodding to a sense of melancholia—an invitation to relive the past while looking forward to a future full of possibility. It's a trend that fuses imagination with elegance, offering a bold yet whimsical footwear statement.

TREND RETRO SURREALISM

SPRING / SUMMER 2026 FOOTWEAR



@pepeherreros.jpg



tory-burch-56.jpg



givenchy 9.png



giaborghini1.png



miu-miu-129.jpg



@katetho69_2.jpeg



Anteprima_108.jpg



Livetrend AI

	Poppy Red 17-1667 TCC		Downtown Brown 19-1223 TCC
	Celosia Orange 17-1360 TCC		
	Charlock 12-0530 TCC		
	Carthage 12-1303 TCC		Patriot Blue 19-3925 TCC
	Lavender Blue 14-5905 TCC		
	Dutch Canal 14-4124 TCC		

TIME SUSPENDED - QUAIN RESORT - FUN NAIVITY - TIMELESS - WIDE-EYED - BOLD PREP - LIGHT MELANCHOLIA

MATERIALS RETRO SURREALISM



charleskeith 4.jpg

**HERITAGE
WOVENS**



tory-burch-28.jpg

**PATENT
COATINGS**



emina muaddi5.png

**ELEGANT
SATIN**



ralph-lauren-271.jpg

**CLEAN
CANVAS**



livetrend AI

DETAILS RETRO SURREALISM



Prada 13.jpg

**CONTRASTING
TOE CAPS**



zara 53.jpg

**PLAYFUL
CHARMS**



miu miu 58.jpg

**RETRO
PIPING**



simkhai-054.jpg

**MINIMAL
BRANDING**

FLATS RETRO SURREALISM

THE BABYDOLL



tory-burch-56.jpg



charleskeith 25.webp

THE COLORBLOCK SNEAKER



Loewe.jpg



miu-miu-58.webp



Livetrend AI 6.png

THE WHITE LOAFER



Miu_Miu_45.jpg



loewe-81.jpg

THE BALLET MULE



charleskeith 12.webp



wconcept7.png

LOW HEELS RETRO SURREALISM

THE LADYLIKE SQUARED TOE



Setchu_29.jpg



prada-088.jpg

THE BLOCK-HEEL BALLERINA



sandy-liang-081.jpg



anteprima-107.jpg



Livetrend AI 7.png

THE MID-CENTURY PUMP



ulla-johnson-1.jpg



prada-1.jpg

THE PEEP-TOE MULE



sandy-liang-83.jpg



zara 17.jpg

HIGH HEELS RETRO SURREALISM

THE SLING-BACK PUMP



kors-096.jpg



miu-miu-133.jpg

THE DANCING SHOE



ralph-lauren-267.jpg



Christopher_Esber-140.jpg



Livetrend AI 8.png

THE LADYLIKE PEEP-TOE



miumiu_139.jpg

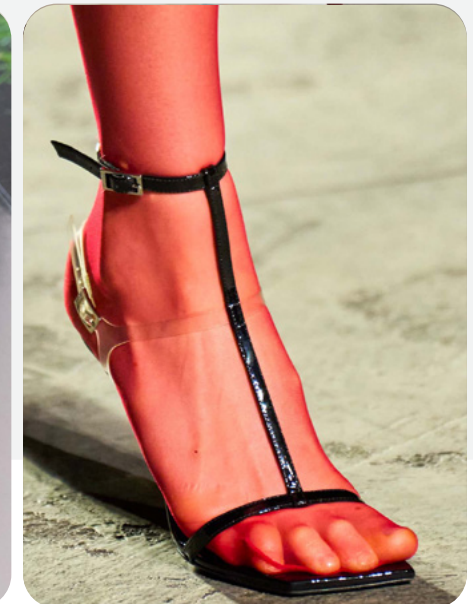


untitled-069.jpg

THE DAINTY T-STRAP



boss-181.jpg



versace-121.jpg

MEN CASUAL RETRO SURREALISM

FALL/WINTER 2025 FOOTWEAR

THE RETRO SNEAKER



zara 77.jpg



Prada.jpg

THE CLASSIC BEACH THONG



Simkhai_053.jpg



auralee-m-41.jpg



LIVETREND AI GENERATION

THE CONTRASTING BOAT SHOE



loewe-14.jpg



MSGM 25.jpg

THE SLIDE LOAFER



zara 91.jpg



Sacai30.jpg

MEN PREMIUM RETRO SURREALISM

FALL/WINTER 2025 FOOTWEAR

THE POINTY BOOTIE



Gucci 22.jpg



esh-065.jpg

THE DANDY DERBY



Prada 17.jpg



Wantanabe 20.jpg



LIVETREND AI GENERATION

THE BABIES SHOE



Taakk_37.jpg



Ralph_Lauren-6.jpg

THE EMBELLISHED PENNY LOAFER



amiri-28.jpg



Valentino9.jpg



SERENE ELEMENTS

The SS26 footwear trend Serene Elements embodies a harmonious fusion of nature, technology, and ethereal design. Rooted in radical simplicity, the collection evokes a poetic spirit, capturing the essence of a journey into untouched landscapes where the call of nature is ever-present. The shoes in this trend are designed to be weightless, offering a sense of effortless movement while creating a connection between the wearer and their environments.

The color palette for Serene Elements gives a utopian blend of mauve grey, stone beige, barely-tinted mints, khakis, olive green, and rose, reflecting the subtle tones of natural terrain and the calming influence of the outdoors. These shades not only reinforce the idea of symbiosis between humanity and nature, but also elevate the concept of nature-inspired minimalism.

Materials are carefully selected to maintain a balance between form and function. Soft, minimal animal skins are paired with papery textures that mimic the fragility and lightness of nature. Mesh, ranging from perforated to clean, breathes with flexibility, while translucent jello elements add a modern twist. These materials support a sense of tech-ture, where technological innovation meets tactile comfort and environmental awareness.

Footwear details stand out with bold resille heels, pullers, and gummy outsoles that bring a futuristic edge to the otherwise understated silhouette. Sock-like flat soles add to the seamless, natural feeling when worn, enhancing the connection between the foot and the earth.

Serene Elements embodies a forward-thinking approach to footwear, capturing the fluidity and peace of nature while embracing the technical sophistication that defines modern style. The result is a collection that speaks to those who seek serenity in simplicity and adventure in every step.



TREND SERENE ELEMENTS

SPRING / SUMMER 2026 FOOTWEAR



livetrend ai



chloe-154.jpg



@5elevenmag.jpg

OUTDOORS +4100%

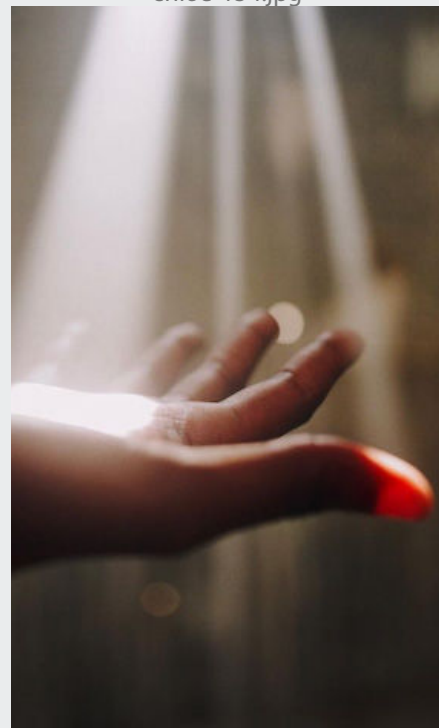
PASTEL LOOK +80%



livetrend ai



zara 8.jpg



@zoeghertner2.png



pinterest4.jpg



alohas.jpg

	Violet Ice 15-2706 TCX		Shark 19-1703 TCX
	Pink Tint 12-1404 TCX		
	Fairfast Jade 12-6206 TCX		
	Aqua Haze 15-5209 TCX		Boulder 14-1110 TCX
	Green Moss 17-0636 TCX		
	Sea Turtle 19-0403 TCX		

RADICAL SIMPLICITY - POETIC EXPLORER - CALL OF NATURE - WEIGHTLESS - TECH-TURE- SYMBIOSIS

MATERIALS SERENE ELEMENTS



christopher esber 6.jpg.webp

**SHEER
JELLO**



giaborghini2.png

**MINIMAL
MESH**



Livetrend AI 1.png



miista.jpeg

**PAPERY
TEXTURE**



Tods-Resort.jpg

**MINIMAL
ANIMAL SKINS**

DETAILS SERENE ELEMENTS



victoria-beckham-128.jpg

**CHUNKY RESILLE
HEELS**



Miyake 23.jpg

**PULLER
FEATURES**



Tokyo_James-63.jpg

**GUMMY
OUTSOLES**



miyake-079.jpg

**SOCK-LIKE
FLATS**

Livetrend AI 2.png

FLATS SERENE ELEMENTS

THE SPORTY LACE-UP



freepeople 12.webp



zara 20.jpg

THE BOXER BOOT



stella-mccartney-115.jpg



Ann Demeulemeester.jpeg



LIVETREND AI GENERATION

THE SHEER FLAT



@khaite.jpg



giaborghini2_1.png

THE SOCK SHOE



esber-clp-s25-115.jpg



miyake-094.jpg

LOW HEELS SERENE ELEMENTS

THE MESH PUMP



gaia.jpg.webp



simone rocha

THE SOFT SQUARED



miista11.jpg.webp



bottega-veneta-114.jpg



LIVETREND AI GENERATION

THE THONG KITTEN



Chloé_147.jp4



carven-67.jpg

THE MORPHED HEEL



bottega-veneta-118.jpg



giaborghini4.png

HIGH HEELS SERENE ELEMENTS

THE SOCK-LIKE ROUND TOE



tod-s-040.jpg



tory-burch-031.jpg

THE PNEUMATIC MULE



andreadamo-036.jpg



charleskeith 24.webp



LIVETREND AI GENERATION

THE SOCK LAYER



drel-q0ee063.jpg



galaxh0ee62.jpg

THE SHEER MULE



private-policy-045.jpg



rokh-90.jpg

MEN CASUAL SERENE ELEMENTS

THE 3D-PRINTED SNEAKER



dior-110.jpg



gucci-50.jpg



LIVETREND AI GENERATION

THE JELLO FISHERMAN



ferragamo-122.jpg



lacoste-129.jpg

THE SCRATCH LEATHER SANDAL



zara 84.jpg



rio-sport-050.jpg

THE SLIP-ON SNEAKER



Kidill.jpg



Miyake 21.jpg

MEN PREMIUM SERENE ELEMENTS

FALL/WINTER 2025 FOOTWEAR

THE GUMMY-SOLE SHOE



loewe-12.jpg



kenzo-86.jpg

THE SOFT BLUECHER



ferragamo-97.jpg



marcforne-5.jpg.webp



LIVETREND AI GENERATION

THE MONOCHROME LOAFER



miyake-105.jpg



Giorgio Armani 45.jpg

THE HYBRID SLIP-ON



Fendi 2.jpg



Gucci.jpg



MOONBATH

Moonbath emerges as a transcendental footwear trend for SS26, intertwining tribal enchantment and a neo-primal aesthetic to celebrate humanity's connection with nature and spirituality. Drawing from ancient traditions and rhythms, this trend embodies an ancient flow that feels timeless yet forward-thinking, blending modernity with the primal essence of craft.

The color palette is rooted in the Earth's most nurturing and evocative hues. Rich spice-inspired pigments mingle with deep teal, burgundy, and berry pink, evoking the vitality of tribal dyes. Warming fermented yellows and oranges, fertile greens, and grounding earthy browns enhance the organic appeal. These tones are not only visually impactful but also deeply symbolic, mirroring the cycles of growth, decay, and renewal—an homage to the circadian shift in nature.

Materials are central to Moonbath's narrative, emphasizing tactility and natural origins. Leather weaves, supple suedes, and airy cotton knits form the foundation, complemented by the luxurious softness of short-hair pony furs. These natural materials are crafted with care, ensuring that each piece tells a story of spiritual artisan mastery. Intricate bohemian ribbons and talisman-inspired add-ons, like charms and pendants, imbue the designs with a mystical allure. Ancient golden sculpted jewels lend a regal yet archaic touch, elevating the primal to the divine.

Footwear silhouettes are designed in harmony with nature. Straps and weaves follow the contours of the foot, creating a balance of comfort and artful detailing. Moonbath evokes a feeling of stepping into a ritual—each piece an artifact of contemporary tribalism, designed to connect the wearer with a deeper sense of self and the world. Neo-primal design has never felt so alive, rooted in the Earth yet bound for the stars.



TREND MOONBATH

SPRING / SUMMER 2026 FOOTWEAR



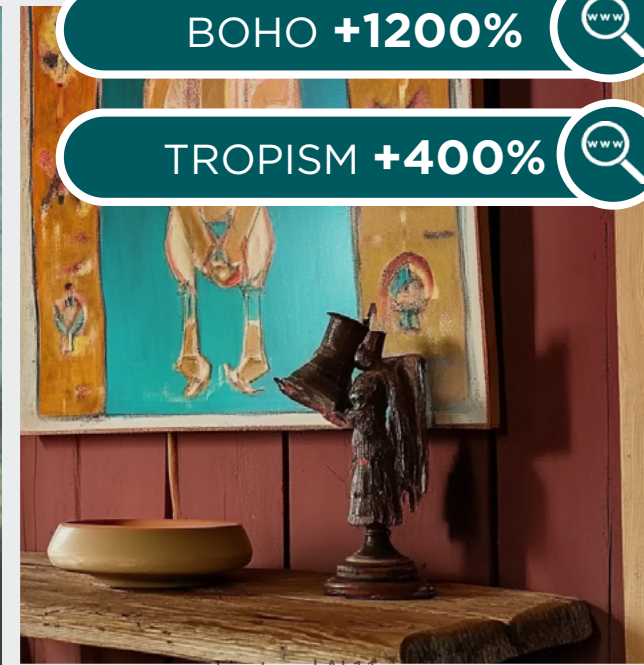
Livetrend AI 9.png



@alexandre birmann4.png



Loro-Piana.jpg



Livetrend AI 11.png

BOHO +1200%

TROPISM +400%



Tods.jpg



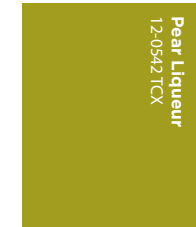
@paulinoecharadin21.png



hereu 9.png



jjhannhpnjrdwLCKghyocfjgr_10407ed848e83b133852e42.png



TRIBAL ENCHANTMENT - NEO-PRIMAL - ANCIENT FLOW - TRUTH SEEKER - SPIRITUAL ARTISAN

MATERIALS MOONBATH

SPRING / SUMMER 2026 FOOTWEAR



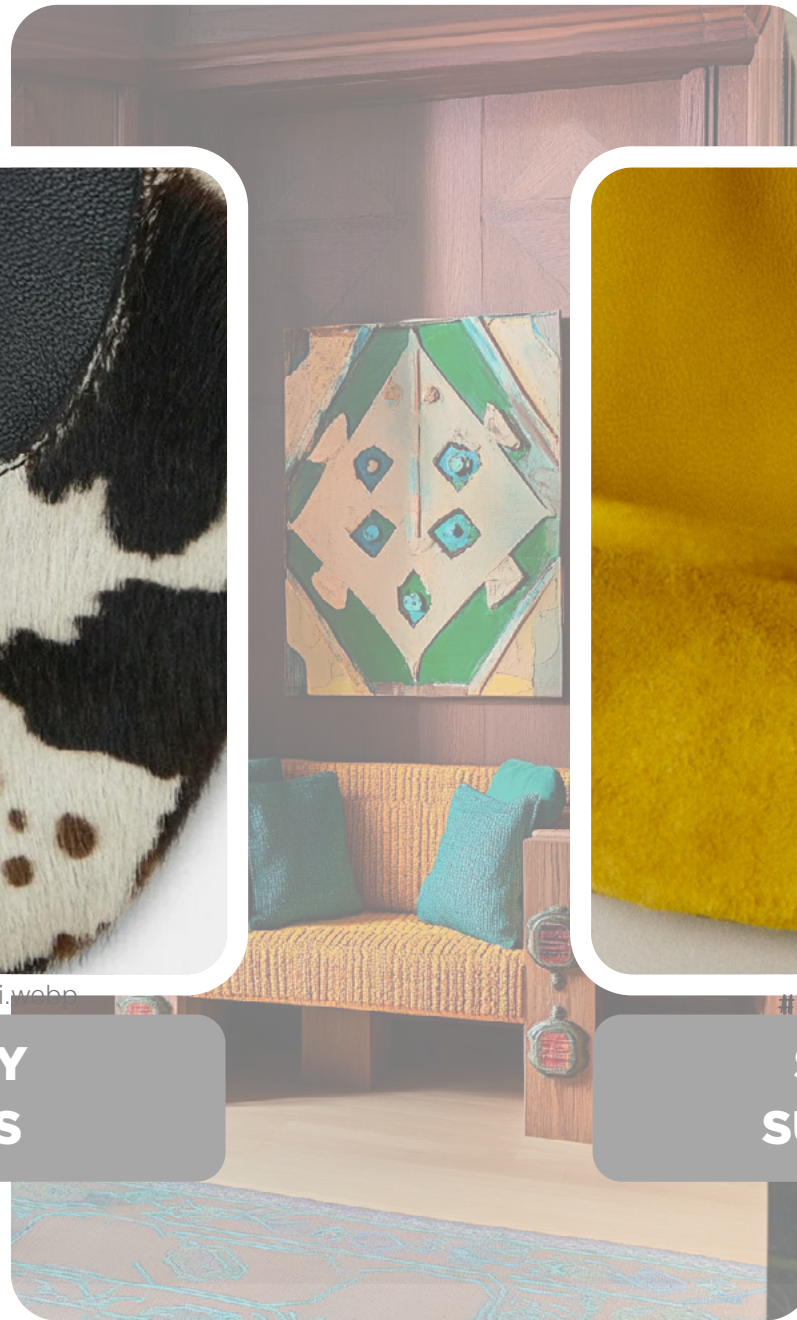
attico_1.jpeg

**COTTON
NETS**

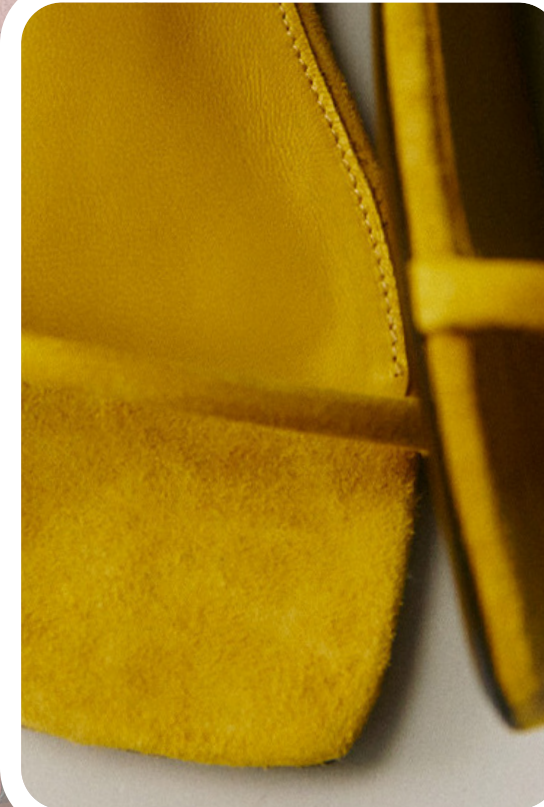


massimo dutti.webp

**PONY
FURS**

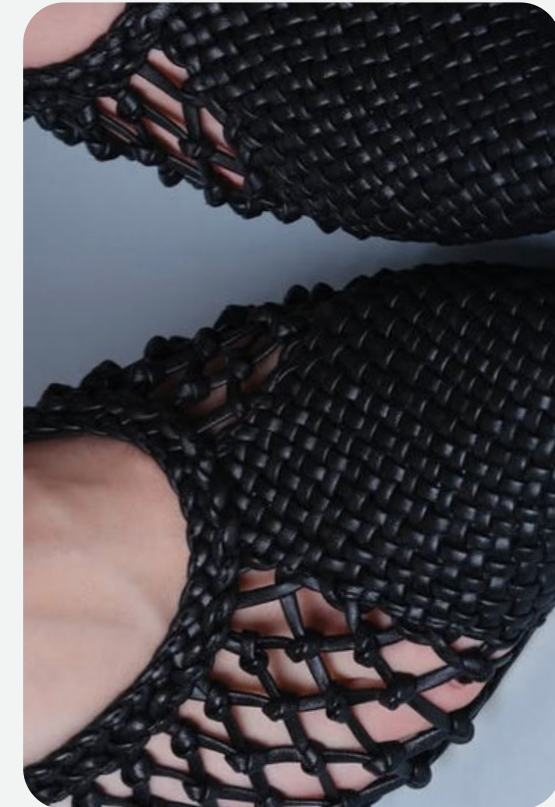


Livetrend AI 13.png



#Toteme.jpg

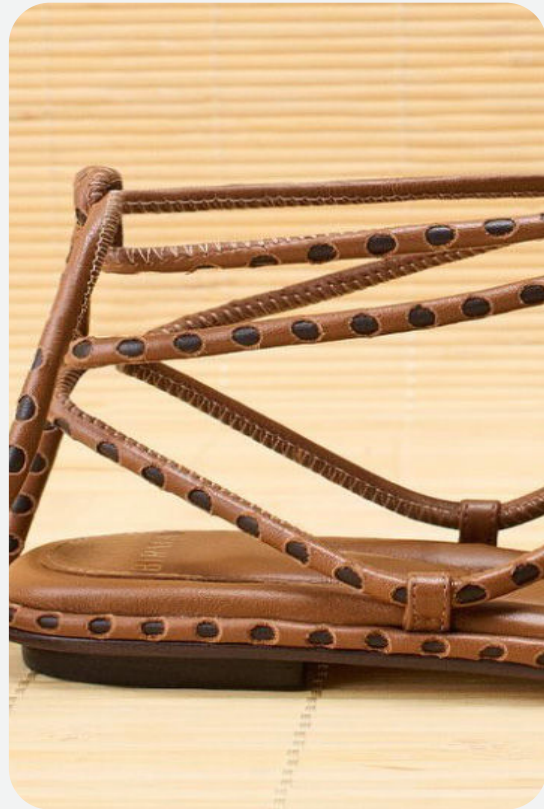
**SOFT
SUEDES**



studio amelia5.png

**LEATHER
WEAVES**

DETAILS MOONBATH



@alexandre birmann6.png

**BOHEMIAN
RIBBONS**



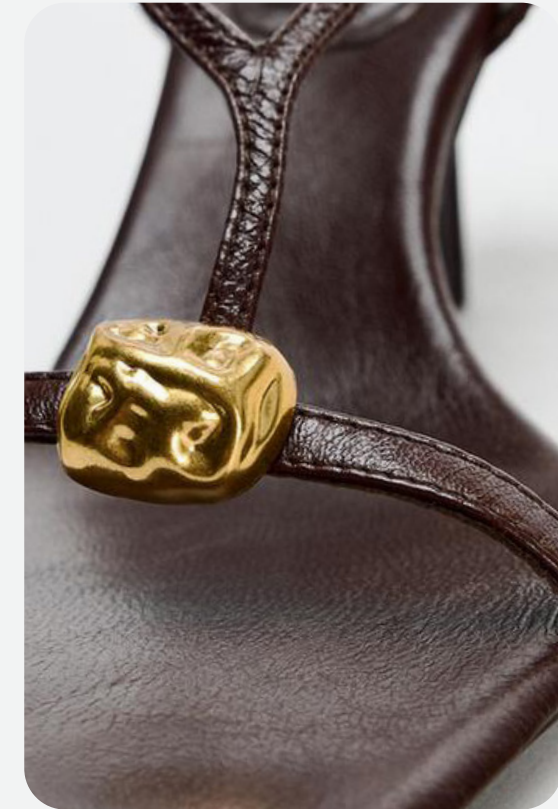
chloe-168.jpg

**TALISMAN
ADD-ONS**



hereu 3.png

**ARTISANAL
FEATURES**



zara 56.jpg

**ANCIENT GOLDEN
JEWELS**



Livetrend AI 14.png

FLATS MOONBATH

THE EMBELLISHED STRAPPY SANDAL



zara 55.jpg



casablanca-155.jpg

THE MINIMAL THONG



zimmermann-125.jpg



Brunello Cucinelli.png

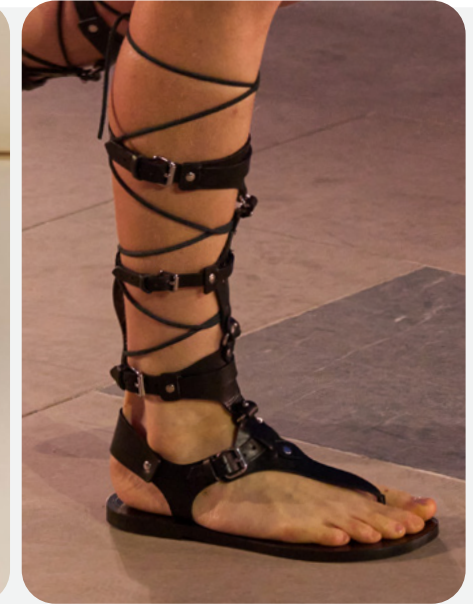


Livetrend AI 15.png

THE HIGH GLADIATOR



Rochas_3.jpg



marant-54.jpg

THE CROCHET FLAT



MagdaButrym.jpg



chloe

LOW HEELS MOONBATH

THE WOVEN PUMP



Prada_15.jpg



fendi-088.jpg

THE CLOG SANDAL



Hermès_88.jp8



cult gaia 17.jpg.webp



jablman_hips_jura_VL5F12.Q_hypratic_high_base062ka4dffc09083060000_3png

THE TOE-RING SANDAL



zara 41.jpg



esber-121.jpg

THE FRINGE MULE



Michael_Kors_040.jpg



Rochas.png

HIGH HEELS MOONBATH

THE BOHO ROPE SANDAL



Burberry.jpg



casablanca-149.jpg

THE LEATHER THONG



etro-063.jpg



zimmermann-116.jpg



LIVETREND AI GENERATION

THE WOVEN SLING-BACK



roberto-cavalli-100.jpg



stella-mccartney-114.jpg

THE CRAFTY EMBELLISHED



@alexandre birmann3.png



ulla-johnson-192.jpg

MEN CASUAL MOONBATH

FALL / WINTER 2025 FOOTWEAR

THE FISHERMAN SLIDE



zara 30.jpg



COS_010.jpg

THE CRISS-CROSS GLADIATOR



hermes-137.jpg



wales-bonner-80.jpg



LIVETREND AI GENERATION

THE RUSTIC PANTOUFFLE



zara 34.jpg



Prada 15.jpg

THE ESPADRILLE SHOE



Giorgio Armani 49.jpg



zara 72.jpg

MEN PREMIUM MOONBATH

FALL/WINTER 2025 FOOTWEAR

TEH SUEDE SHOE



Emporio Armani21.jpg



wooyoungmi-80.jpg

THE ROUND MONK FLAT



fendi.jpg



zara 24.jpg



LIVETREND AI GENERATION

THE CRAFTED LOAFER



Bottega_Veneta_030.jpg



wooyoungmi-77.jpg

THE NATURAL NOMAD BOOT



emporio-armani-270.jpg



Dior 81.jpg



WHIMSICAL GRUNGE

The SS26 Whimsical Grunge footwear trend manifests a bold expression of identity, blending a youthful rebellious energy with a touch of romance. Rooted in disruptive chic, this style reinvents grunge with a playful, eclectic spirit into a style that oscillates between minimal and maximal aesthetics.

Rich hues of burgundy, black, and deep purple dominate the palette, creating a moody foundation that is punctuated by bold accents of fuchsia, light mint, lime green, and nude peachy pinks. These colors evoke a sense of urban romance and energy, drawing attention to the dramatic interplay of light and shadow.

Materiality is key to Whimsical Grunge, with arty jacquards, coated finishes, and crackled surfaces delivering a raw yet artistic vibe. Dirty and stained leather effects enhance the lived-in aesthetic, adding intrigue. Design details take a playful turn, featuring corset-like lace-up structures, scribbled graffiti motifs, and oversized extreme jibbitz that push classic boundaries. Edgy rock studs infuse the trend's footwear with a subcultural edge, making a nod to indie sleaze band-culture.

This trend celebrates individuality through messy and chaotic stories. Whether it's the clash of grunge-era chaos with modern minimalism or the contrast of delicate pastels against deep, brooding tones, Whimsical Grunge is an ode to contradiction. It empowers wearers to embrace the unpolished and unexpected, forging a distinctive personal and authentic style that resonates in urban settings and beyond. Ultimately, SS26 Whimsical Grunge dares to be different—an audacious, artful fusion of grunge nostalgia and contemporary boldness.

TREND WHIMSICAL GRUNGE

SPRING / SUMMER 2026 FOOTWEAR



coach-111.jpg



rocha-65.jpg



Livetrend AI 18.png



TheAttico12.jpg



charleskeith 14.webp

INDIE SLEAZE +205%

SOFT GRUNGE +60%



balkissa.jpeg



blumarine.jpeg

Purple Corallites 18-3829 T/CX	Black Beauty 19-3911 T/CX
Fair Aqua 12-5409 T/CX	
Sulphur Spring 13-0650 T/CX	
Beetroot Purple 18-2143 T/CX	Silver Peony 12-1206 T/CX
Pomegranate 19-1930 T/CX	
Shell Pink 16-1632 T/CX	

BOLD IDENTITIES - DISRUPTIVE CHIC - MINIMAL/MAXIMAL - URBAN ROMANCE - REBELLIOUS DREAMSTATE - YOUTH

MATERIALS WHIMSICAL GRUNGE



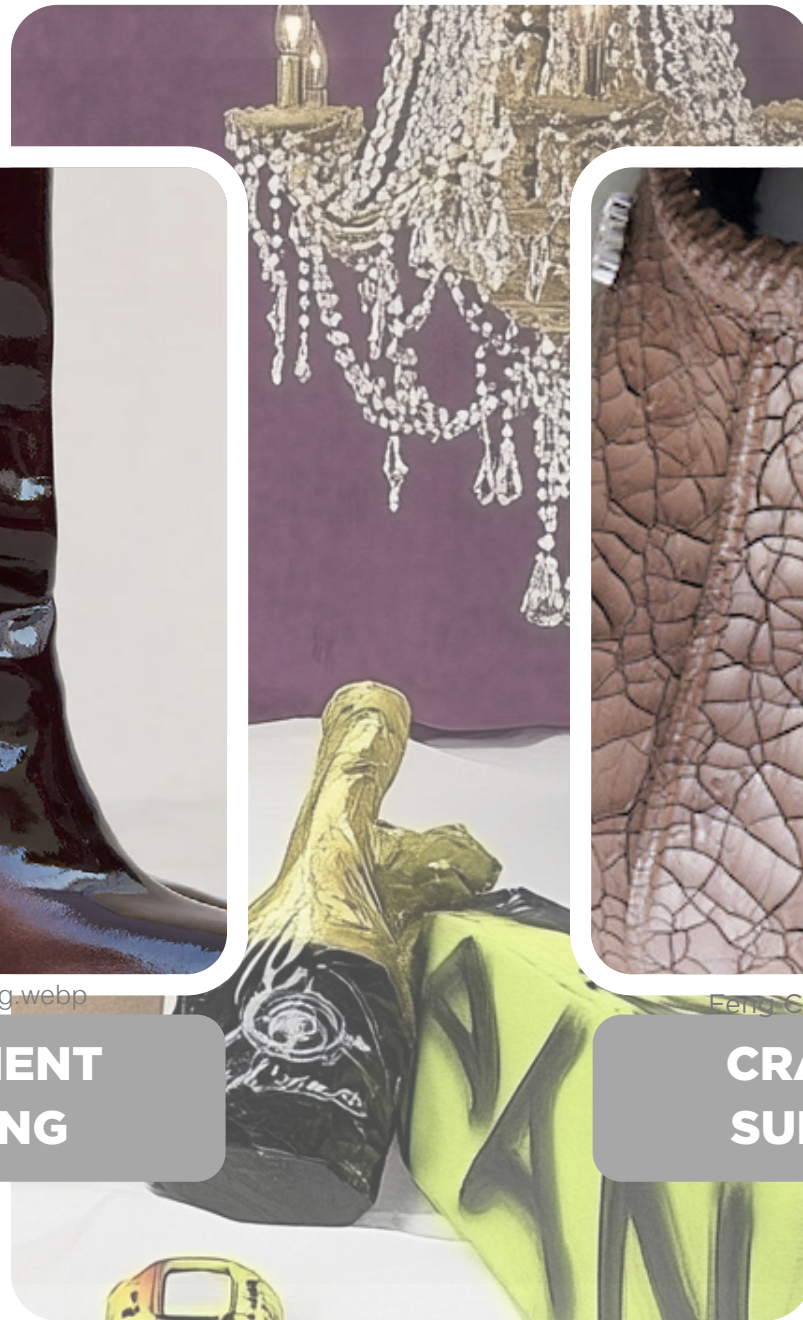
loubutin

**ARTY
JACQUARDS**



cult gaia 26.jpg.webp

**STATEMENT
COATING**

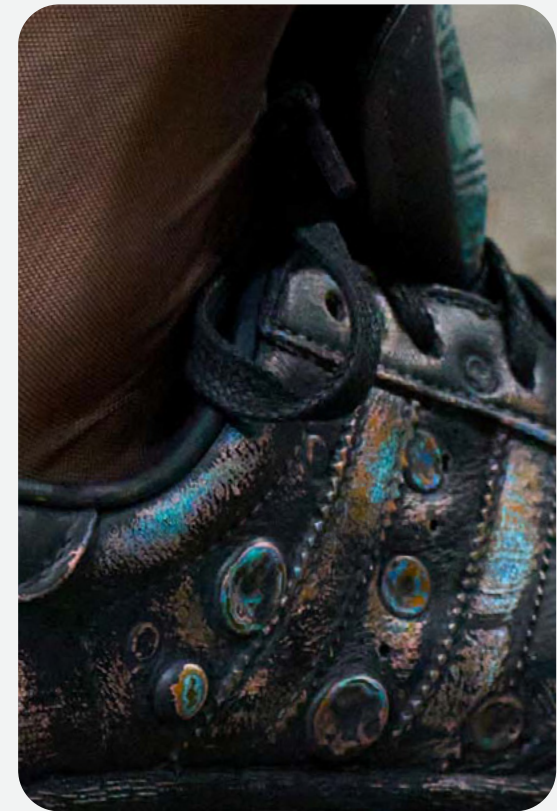


Livetrend AI 19.png



Feng Chen Wang 4.jpg

**CRACKLED
SURFACES**



popova-049.jpg

**DIRTY
LOOK**

DETAILS WHIMSICAL GRUNGE



gucci-154.jpg

**ROCK
STUDS**



wconcept4.png

**EXTREME
CHARMS & JIBBITZ**



gabri-099.jpg

**CORSET
LACE-UP**



chloe

**SCRIBBLED
FEATURES**

FLATS WHIMSYICAL GRUNGE

THE POINTY DERBY



toga-038.jpg



victoria-beckham-116.jpg

THE JIBBITZ SNEAKER



collina-strada-066.jpg



freepeople 33.webp



Livetrend AI 21.png

THE EDGY MARY-JANE



emporio-armani-264.jpg



Ganni_78.jpg

THE LACE-UP FLAT



hui-075.jpg



demeulemeester-075.jpg

LOW HEELS WHIMSICAL GRUNGE

THE ROCK MARY-JANE



Bally_30.jpg



maitrepierre-45.jpg

THE SEDUCTIVE OPEN-BACK



septwolves-105.jpg



shiatzy-chen-135.jpg



Livetrend AI 22.png

THE REBEL BLOCK-HEEL LOAFER



prada-104.jpg



burberry-082.jpg

THE LACE-UP ANKLE BOOTIE



knwls-056.jpg



ganni-098.jpg

HIGH HEELS WHIMSICAL GRUNGE

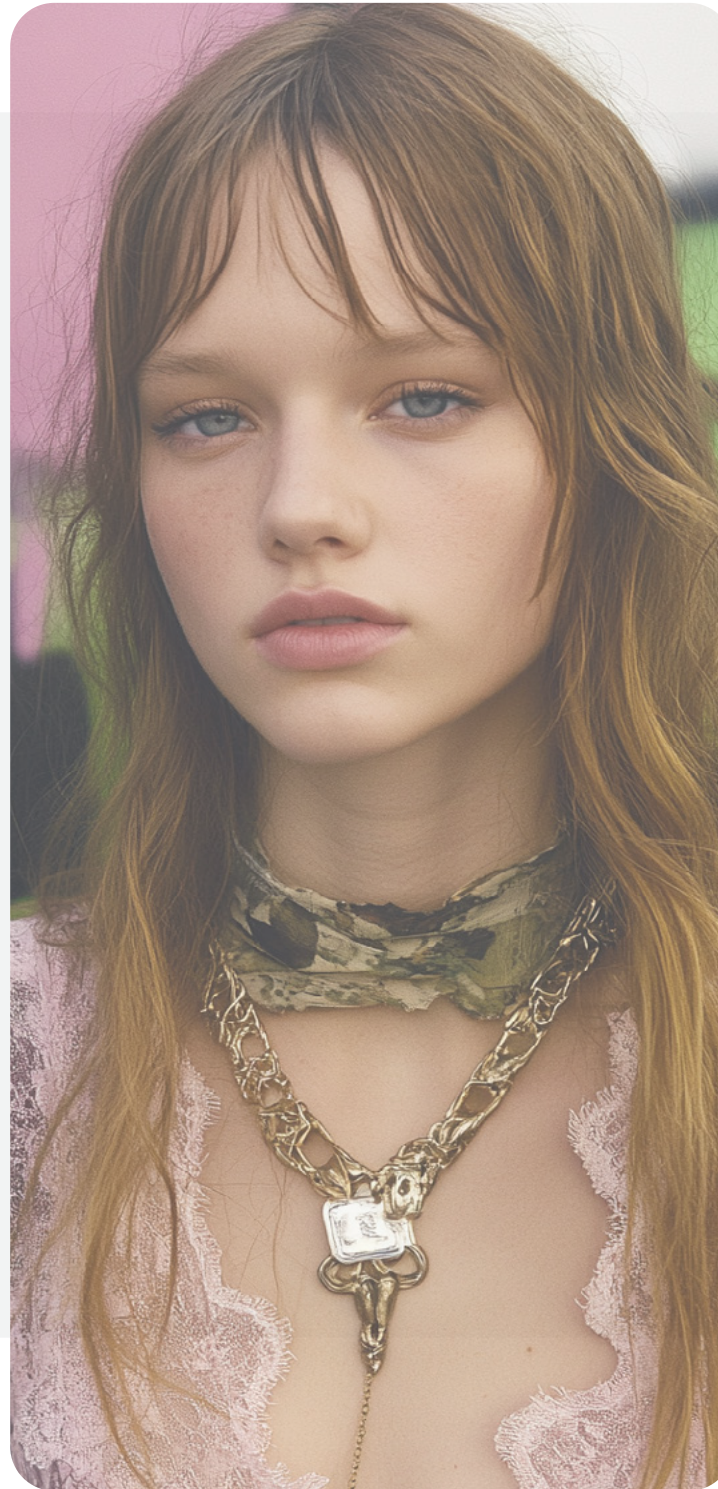
THE POINTY STRAPPY SANDAL



mugler-048.jpg



cult gaia 21.jpg.webp



Livetrend AI 23.png

THE LACE-UP SANDAL



attico-42.jpg



ferragamo-112.jpg

THE GRUNGE SANDAL



knwls-50.jpg



burberry-1.jpg

THE COUTURE PLATFORM



vuitton-125.jpg



dolce-gabbana-100.jpg

MEN CASUAL WHIMSICAL GRUNGE

FALL/WINTER 2025 FOOTWEAR

THE EXTREME STRAPPY SANDAL



CFCL_28.jpg



Undercover_31.jpg

THE WORN-OUT SNEAKER



coach-108.jpg



popova-054.jpg



LIVETREND AI GENERATION

THE COATED MULE



Feng Chen Wang 43.jpg



simon-cracker-86.jpg

THE SOCCER SNEAKER



steve madden3.png



vaquera-053.jpg

MEN PREMIUM WHIMSICAL GRUNGE

FALL/WINTER 2025 FOOTWEAR

THE FANCY CREEPER



comme-des-garcons-037.jpg



Sacai33.jpg

THE CUT-OUT DERBY



rocha-063.jpg



Martine Rose 8.jpg



LIVETREND AI GENERATIONS

THE ECCENTRIC POINTY SHOE



Martine Rose 11.jpg



loewe-075.jpg

THE DISRUPTIVE BOOT



moschino-168.jpg



John Richmond 14.jpg



LIVETREND

THANK YOU!

You may not copy, reproduce, distribute, publish, display, perform, modify, create derivative works, transmit, or in any way exploit any such content, nor may you distribute any part of this content over any network, sell or offer it for sale, or use such content to construct any kind of database. You may not alter or remove any copyright or other notice from copies of the content on any Livetrend report.

If you have further needs, please contact us via chat.

