



WOMENSWEAR
SS 2026
FORECASTING
BAGS



LIVETREND

SS26 BAGS INTRODUCTION



Elegance meets Boho Spirits.

FORECAST

The SS26 bag trends offer leather totes and classic shoppers that emphasize practicality and timeless appeal. Hobo bags adopt more modern, sculptural silhouettes, while baskets and bucket bags bring an authentic charm. Meanwhile, market bags add a vocational edge through net designs or ironic plastic shopping bag-inspired styles. For handbags, the Boston bag and top-handle flap bags exude chic sophistication, while bucket bags become pivotal with inlays or contemporary leather finishes. Ladylike top-handle bags with belts and structured frames elevate elegance further. Hammock bags continue to trend, featuring intricate hardware details, while circle bags with playful metal handles add novelty. The pouch bag, celebrated for its soft, relaxed style, remains a staple. Shoulder bags introduce fresh versatility, with east-west bags as standout players. Unstructured designs bring a soft, laid-back vibe, while string bags and leather saddle bags infuse a bohemian spirit. Multipocket bags, remain crucial, but might evolve into deconstructed multi-bag styles for heightened novelty. Y2K-inspired structured shoulder bags retain their place as essentials, complemented by sculpted circle handles and fun material explorations in hobos. This season, SS26 bags skillfully blend modernity, playfulness, and timeless craftsmanship to cater to diverse tastes and needs.

This forecasting report is realized crossreferencing LIVETREND data from several sources to empower the expertise of our Trend Analysts to forecast the trends with concrete and quantitative information. Find the related data sources and icons on the last slides.

[ACCESS ALL IMAGES
CLICKING HERE](#)

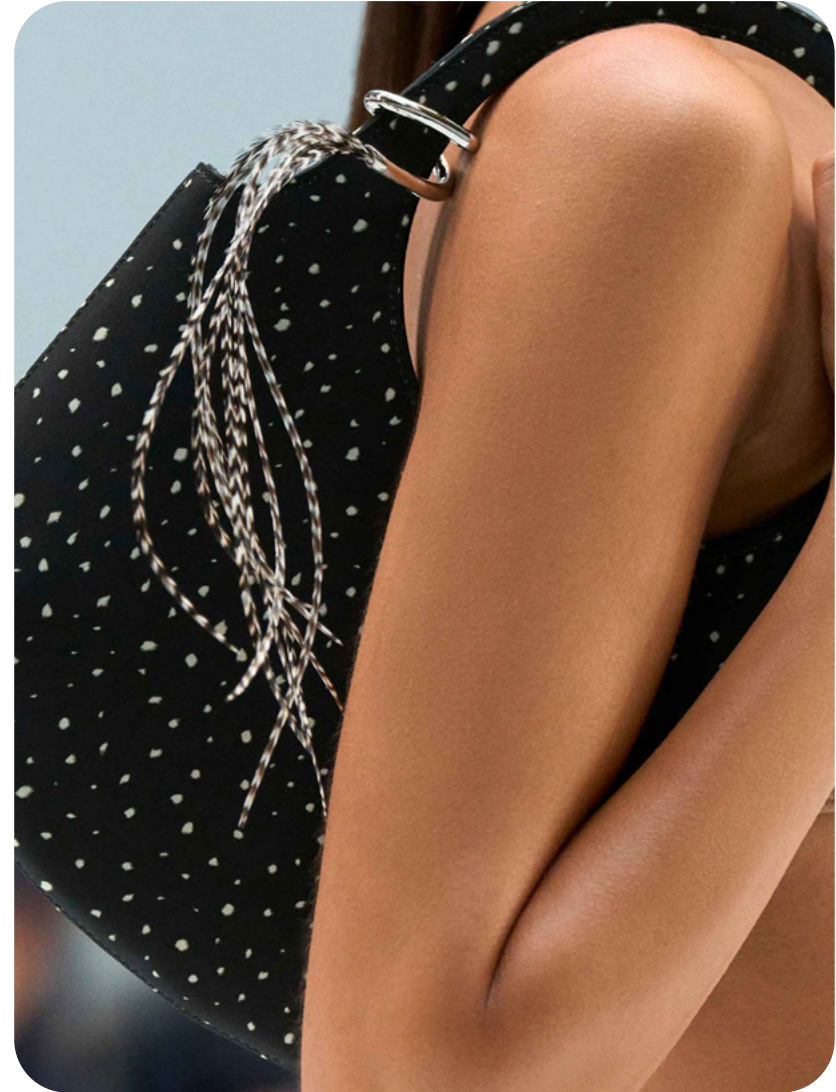
SS26 MATERIALS



dragon disffusion2.png

[CLICK HERE](#)

SS26 DETAILS



courreges-4.jpg

[CLICK HERE](#)



KEY ITEMS

CITY BAGS

The SS26 city bag trends embrace versatility and a blend of tradition and modernity. Leather totes and classic shoppers dominate with timeless appeal, while hobos adopt sculptural, modern shapes. Natural baskets and raffia bucket styles bring vacational vibes and market bags enhance this holiday edge with netting or ironic plastic shopping bag-inspired designs. Sling bags continue to favor circular shapes with a nomadic touch, enhanced by rustic raffia and fringe details. Modernity takes center stage in flat, structured totes and folded designs, while falling-open, avant-garde inspirations add a daring twist. These styles reflect an effortless balance of practicality, craft, and innovative design, catering to both urban functionality and creative expression.

SS26 CITY BAGS SPOTLIGHT



MANIFEST



INVEST



TEST

LEATHER TOTE



@littliffner 3.png

HOBO 2.0



versace-s25-100.jpg

SHOPPER



burberry-3.jpg

MARKET BAG



hui-069.jpg

FLAT TOTE



paris-street-style-59.jpg

This Trend Spotlight proposes the must-have products of the season to build the right assortment.

This selection is made to ensure that you have the right collection staples, invest in the right core pieces and test the right trendy items within your product range.

Find the full list of seasonal core items on the next slides.

BIG TREND

SS26 THE LEATHER TOTE



@littliffner 3.png

AUTHENTIC SUEDES



victoria-beckham-6.jpg



valentino-058.jpg



tibi 63.jpg

COATED STYLES



vuitton-19.jpg



sezane.avif

BIG TREND

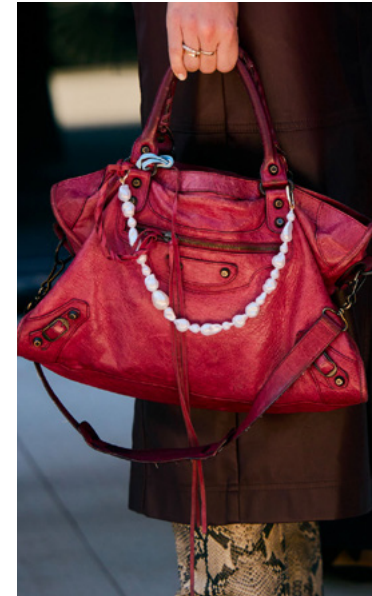
SS26 THE CITY SHOPPER



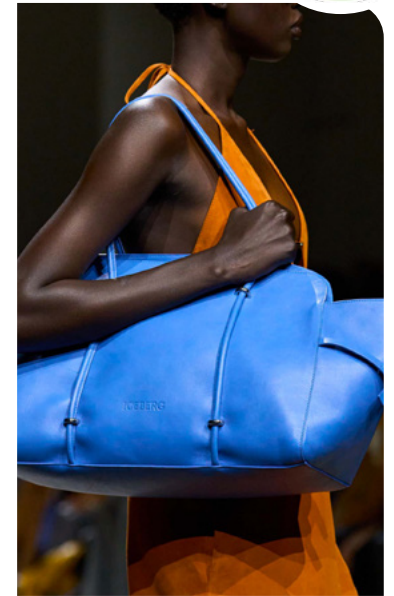
london-street-style-46.jpg



burberry-3.jpg



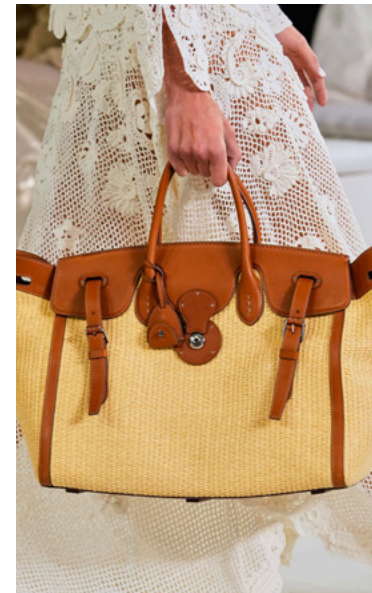
ny-street-style-34.jpg



iceberg-054.jpg



chloe-brown-kerala-25.jpg



ralph-lauren-204.jpg



moschino-133.jpg



comey-085.jpg



zara 15.jpg



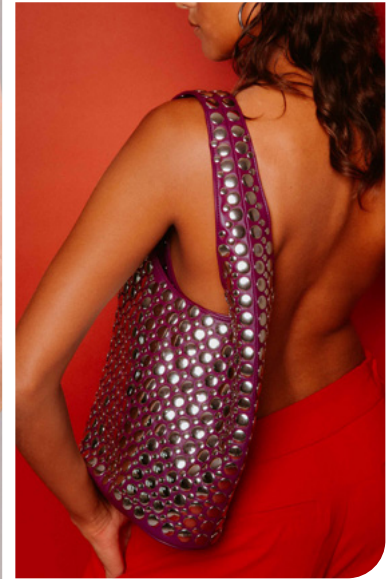
sourceunknown9.png



ferragamo-066.jpg



versace-s25-100.jpg



dotthz-modaoperandi-1.jpg

ORIGAMI STYLES

MODERN ELONGATED



STABLE TREND

SS26 THE CRESCENT SLING BAG



burberry-s25-039.jpg



freepeople11.webp



marant-025.jpg



zara 20.jpg



chloe-130.jpg



ganni-039.jpg

HALFMOON

MAXI STYLE

BAGS

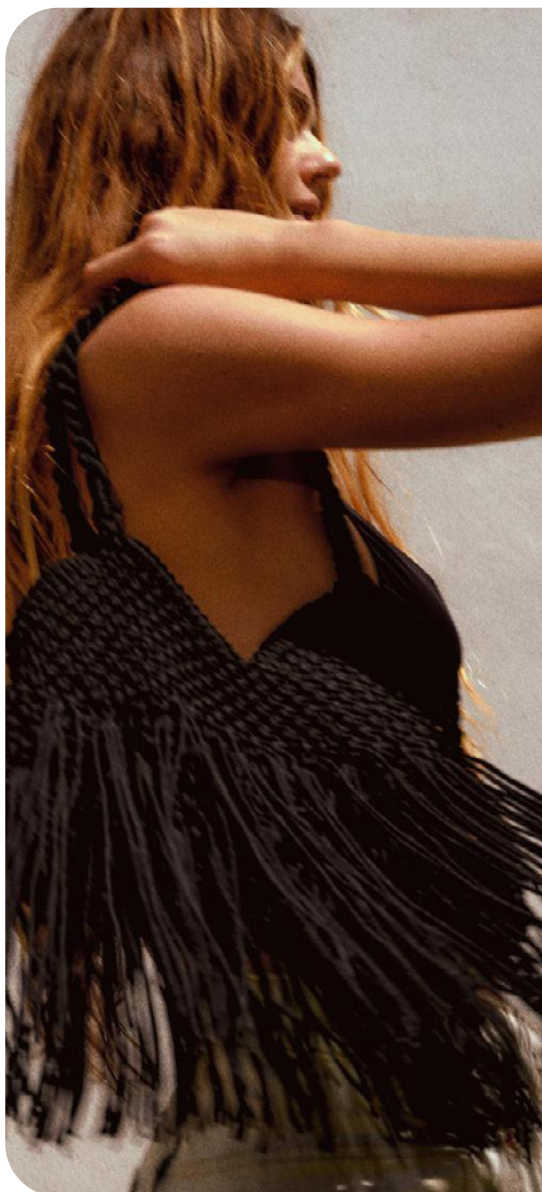
WOMENSWEAR

FORECASTING

SPRING/SUMMER 2026



FRINGED TOTE



zara 34.jpg



valentino-31.jpg



hermes-39.jpg

RUSTIC RAFFIA



janessa-leone-modaoperandi-2.jpg



paris-street-style-108.jpg



altuzarra2.png

STABLE TREND

SS26 THE BASKET BAG



bottega-veneta-6.jpg



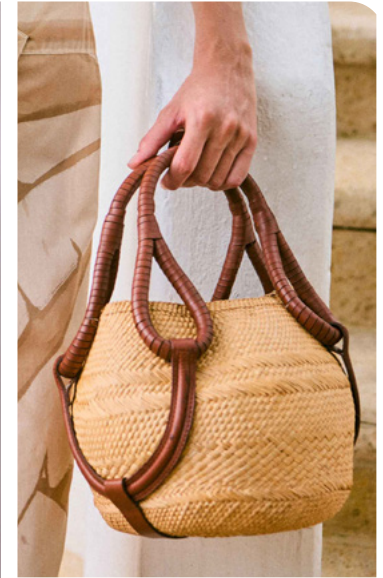
staud-modaoperandi-2.jpg



pin.jpeg



bottega-veneta-13.jpg



johanna-ortiz-modaoperandi-8.jpg



hermes-42.jpg

CLASSIC BASKET BAGS

RAFFIA BUCKETS



marco-rambaldi-081.jpg



bottega-veneta-37.jpg



victoria-beckham-10.jpg

SHEER SHOPPING



philosophy 44.jpg



LillieThompson.webp



hui-069.jpg

INLAY NETS

FLAT & STRCUCTURED



courreges



paris-street-style-59.jpg



miumiu4.avif

FILET LACE BAG



@littlewifey-6.png.webp



marco rambaldi 72.jpg



@serpenti2.jpg

FOLDED LOOKS



courreges



consistence-026.jpg



max-mara-6.jpg

FALLING OPEN



boss-141.jpg



adam-leenaerd-049.jpg



milano-street-style-1jpg.jpg



KEY ITEMS

HANDBAGS

SS26 handbags are defined by elegance and versatility. The Boston bag and top-handle case bag lead the range, exuding a chic allure. Bucket bags emerge as key players, featuring inlays or modern leather designs. Ladylike top-handle bags, with belts and structured frames, elevate sophistication further. Hammock bags remain popular, now enhanced with intricate hardware and playful metal handles. Circle bags offer novelty, while the pouch bag retains its status as a soft, relaxed style. Cases and box bags bring retro flair with fancy top handles or opt for modern geometric and tubular shapes. Adding a bold touch, hardshell bags double as artsy objects or sleek metallic clutches, offering a sculptural and contemporary approach.

SS26 SHOULDER BAGS **SPOTLIGHT**



MANIFEST



INVEST



TEST

BOSTON BAG



kors-091.jpg

TOPHANDLE CLASP



kent-curwen-061.jpg

BUCKET BAGS



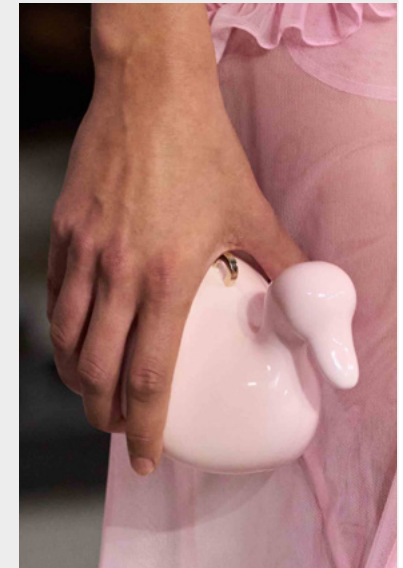
ganni-040.jpg

HAMMOCK



prada-059.jpg

ARTY HARDSHELL



Simone Rocha2.jpg

This Trend Spotlight proposes the must-have products of the season to build the right assortment.

This selection is made to ensure that you have the right collection staples, invest in the right core pieces and test the right trendy items within your product range.

Find the full list of seasonal core items on the next slides.

BIG TREND

SS26 THE BOSTON BAG



kors-091.jpg



bally-063.jpg



versace-15.jpg



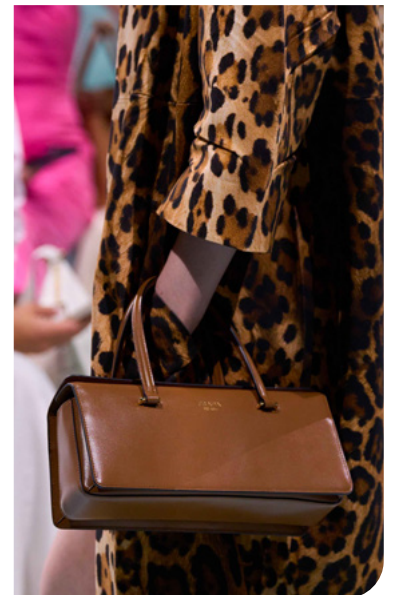
milan-street-style-6.jpg



stella-mccartney-5.jpg



sandy-liang-034.jpg



prada-28.jpg

BIG TREND

SS26 THE TOPHANDLE FLAP BAG



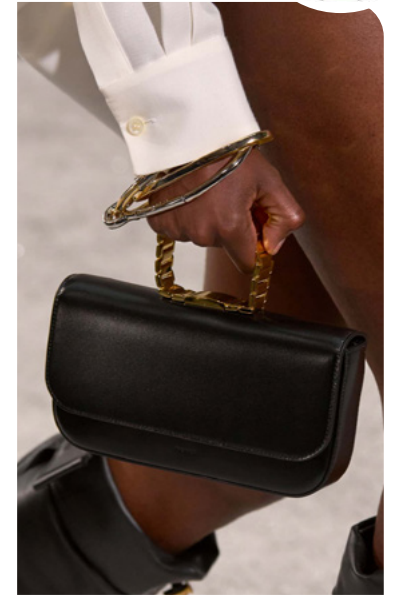
gabriela-hearst-084.jpg



ottolinger-080.jpg



kent-curwen-048.jpg



sacai-071.jpg



tory-burch-027.jpg



kent-curwen-061.jpg



victoria-beckham-9.jpg

BAGS

WOMENSWEAR

FORECASTING

SPRING/SUMMER 2026

STABLE TREND

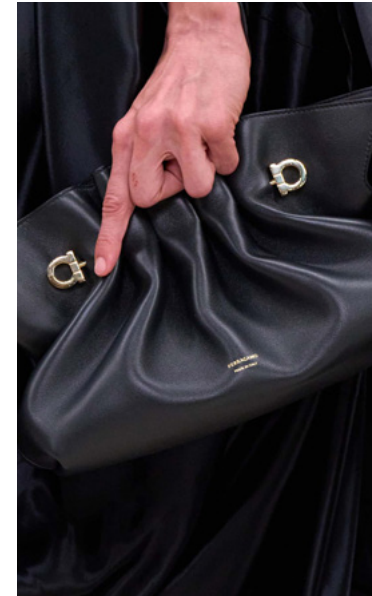
SS26 THE SCRUNCHY POUCH



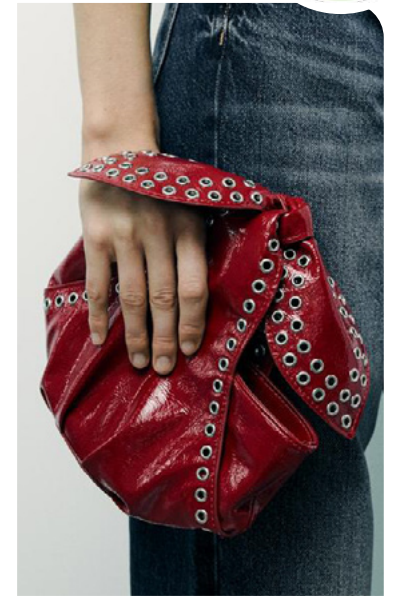
van-noten-20.jpg



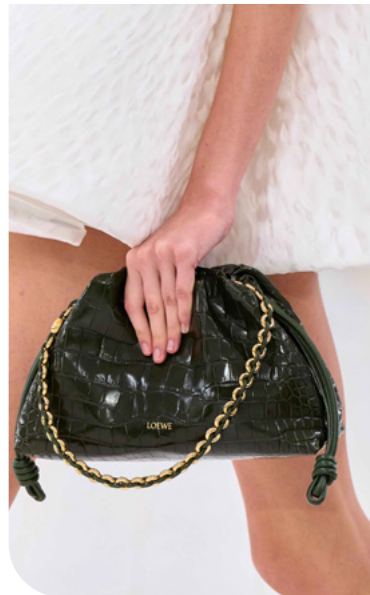
miumiu-28.jpg



ferragamo-070.jpg



zara 29.jpg



loewe-6.jpg



rokh-1.jpg



philosophy-s25-038.jpg

BAGS

WOMENSWEAR

FORECASTING

SPRING/SUMMER 2026

SAFE TREND

SS26 THE TOPHANDLE BELTED BAG



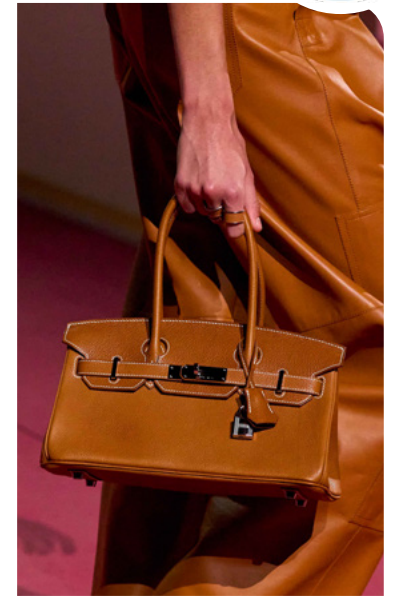
miumiui-3.jpg



paris-street-style-26.jpg



milan-street-style-47.jpg



hermes-37.jpg



prada-055.jpg



vuitton-2.jpg



london-street-style-15.jpg

STABLE TREND

SS26 THE FRAME BAG



dolce-gabbana-8.jpg



max-mara-9.jpg



prada-9.jpg



fendi 22.jpg



carven-048.jpg



kors-074.jpg



staudt2.png



#Jacquemues_.jpg

SLEEK & MODERN



prada-24.jpg

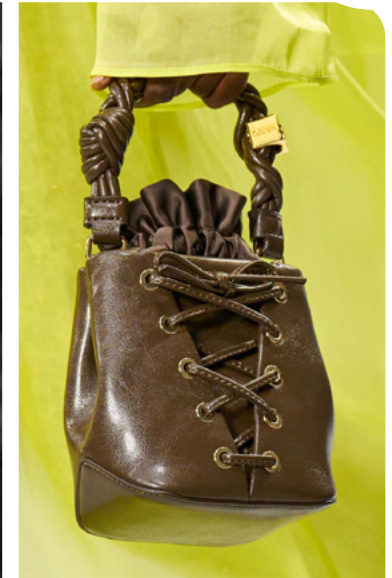


paris-street-style-100.jpg



kors-059.jpg

INLAY STYLES



ganni-040.jpg



valli-6.jpg

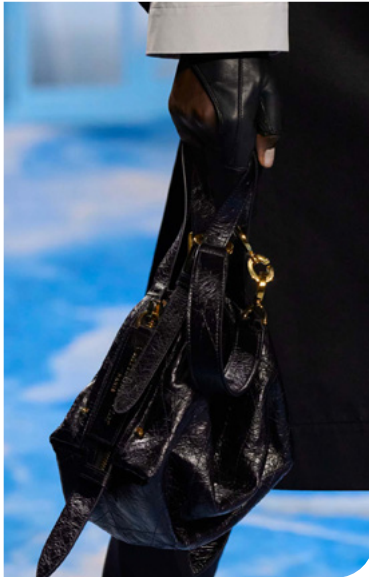
HARDWARE HAMMOCK



paris-street-style-41.jpg



prada-059.jpg



dior-085.jpg

METAL HANDLE CRICLE



bottega-veneta-7.jpg



cult gaia 11.jpg.webp



chloe-20.jpg



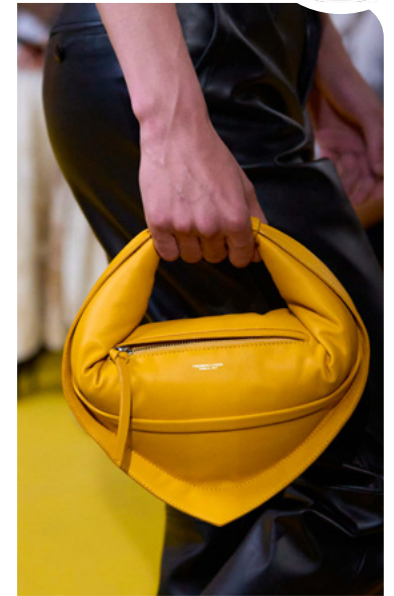
sandy-liang-47.jpg



ester-manas-049.jpg



cult gaia 9.jpg.webp



federico-cina-026.jpg



paris-street-style-55.jpg



stagniyellowwovenleatherbonbonbag.jpg



miu-miu-084.jpg

EARLY SIGN

SS26 THE CASE & BOXY BAG



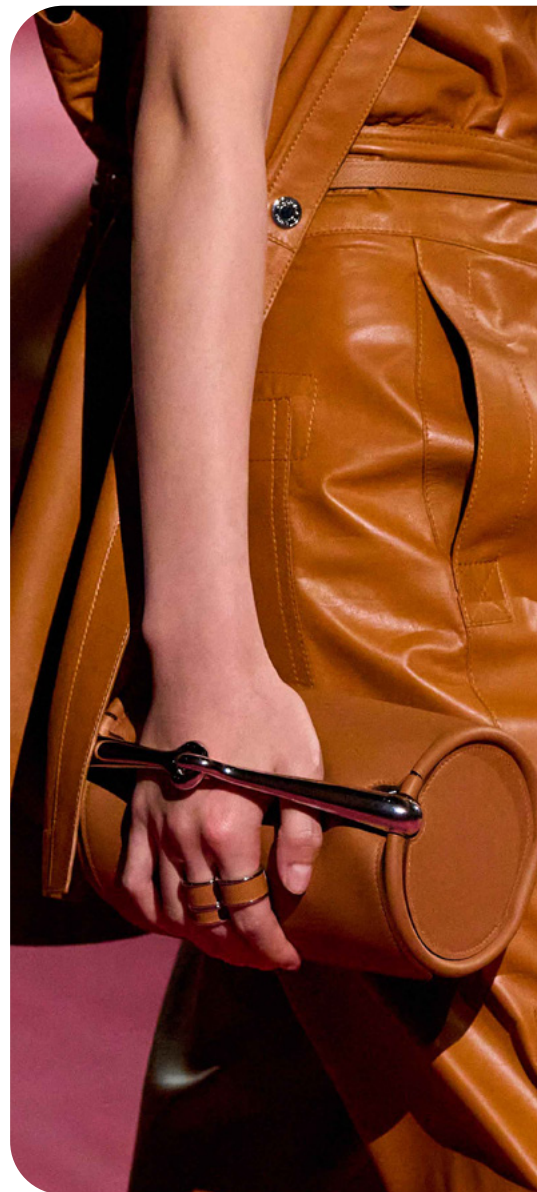
versace-clp-s25-107.jpg



bottega-veneta-modaoperandi-2.jpg



paris-street-style-51.jpg



hermes-31.jpg



fiorucci.jpg



cult gaia -6.jpg.webp

TOPHANDLE BOX

TUBULAR LOOK



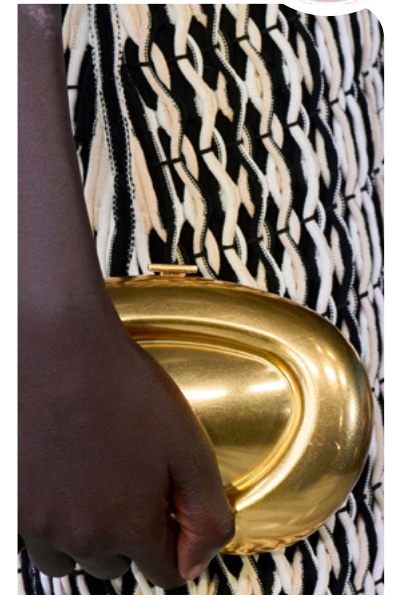
chloe 101.jpg



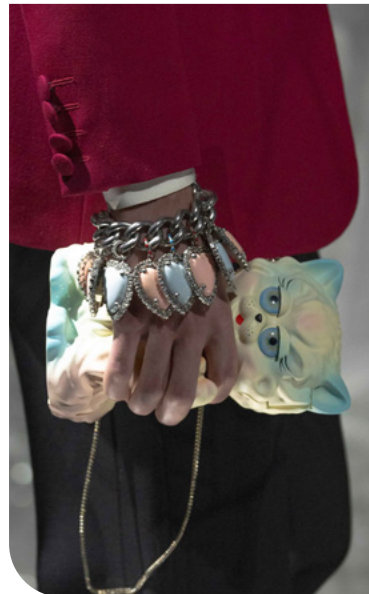
valli-026.jpg



@staudtclotting8.png



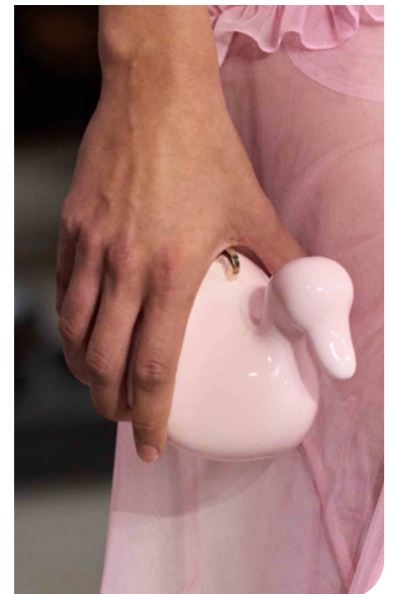
simkhai-036.jpg



valentino-13.jpg



cult gaia 10.jpg.webp



Simone Rocha2.jpg



KEY ITEMS

SHOULDER BAGS

The SS26 shoulder bag trends bring versatility and fresh energy. The east-west bag stands out as a key player, while unstructured designs offer softness and a relaxed, laid-back appeal. String bags and leather saddle bags evoke a bohemian vibe, while multi-pocket bags evolve into deconstructed multi-bag styles, enhancing practicality. Structured Y2K-inspired styles remain essential staples, adding nostalgic charm. Innovations in inserted handle sculpted circles and hobos explore playful materials, blending creativity with function. Beyond charms and kibbutz-inspired details, the season embraces extreme maximalism, with bold, exaggerated materials leading the way. SS26 shoulder bags skillfully balance classic shapes with experimental designs, catering to both minimalists and lovers of high-impact statement pieces.

SS26 HANDBAGS SPOTLIGHT



MANIFEST



INVEST



TEST

EAST-WEST BAG

UNSTRUCTURED

TBOHO SADDLE

ADD-ON

STRING BAGS



prada-2.jpg



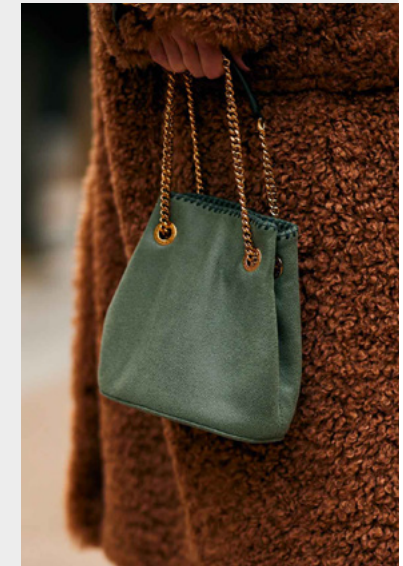
zimmermann-062.jpg



mcqueen-11.jpg



stella-mccartney-087.jpg



paris-street-style-155.jpg

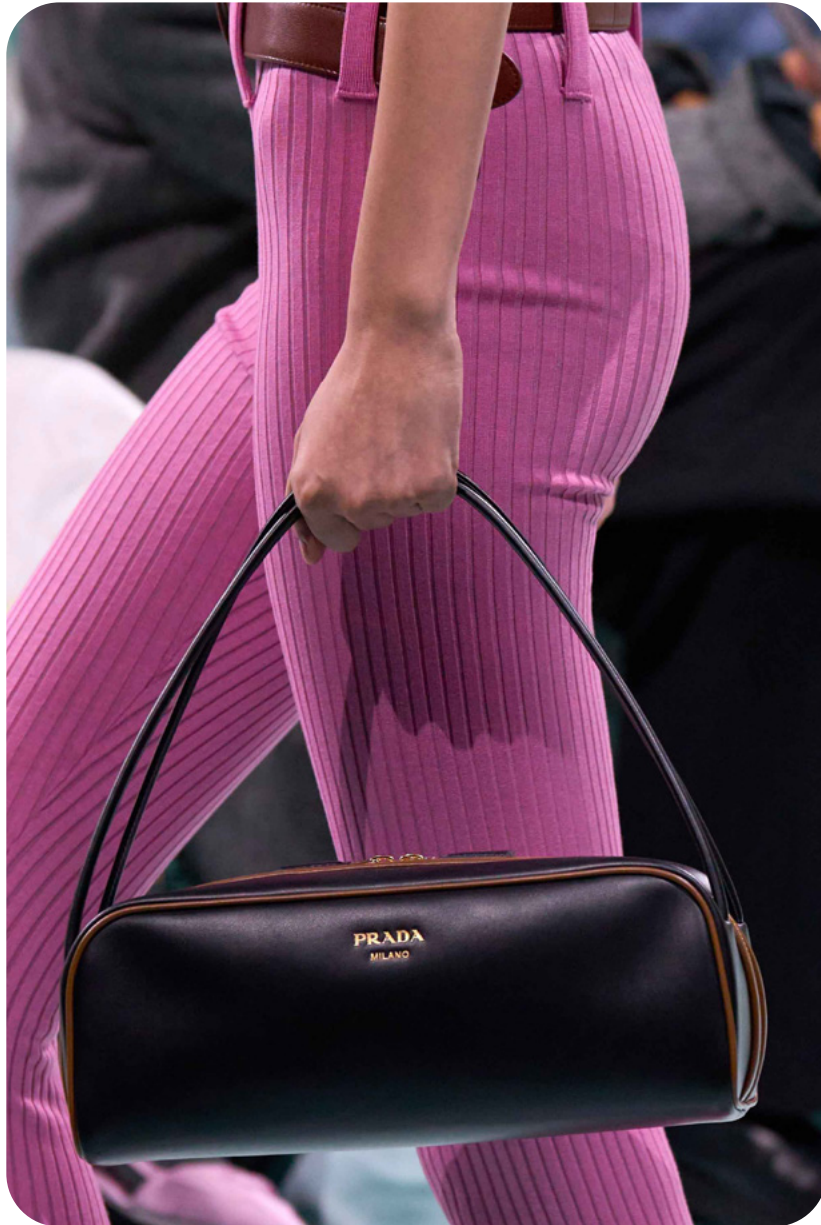
This Trend Spotlight proposes the must-have products of the season to build the right assortment.

This selection is made to ensure that you have the right collection staples, invest in the right core pieces and test the right trendy items within your product range.

Find the full list of seasonal core items on the next slides.

BIG TREND

SS26 THE EAST-WEST BAG



prada-2.jpg



attico-031.jpg



khaite-modaoperandi-1.jpg



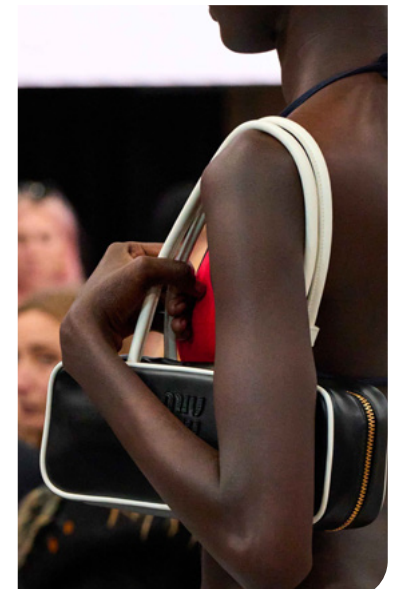
esber.webp



staudt1.png



versace-2.jpg



miumiu-12.jpg

BAGS

WOMENSWEAR

FORECASTING

SPRING/SUMMER 2026

BIG TREND

SS26 THE UNSTRUCTURED



chloe-modaoperandi-1.jpg



cult gaia -9.jpg.webp



vuitton-.jpg



loewe-7.jpg



shiatzy-chen-092.jpg



zimmermann-062.jpg



bottega-veneta-4.jpg

BAGS

WOMENSWEAR

FORECASTING

SPRING/SUMMER 2026

STABLE TREND

SS26 THE MULTIPOCKET



london-street-style-34.jpg



chloe-38.jpg



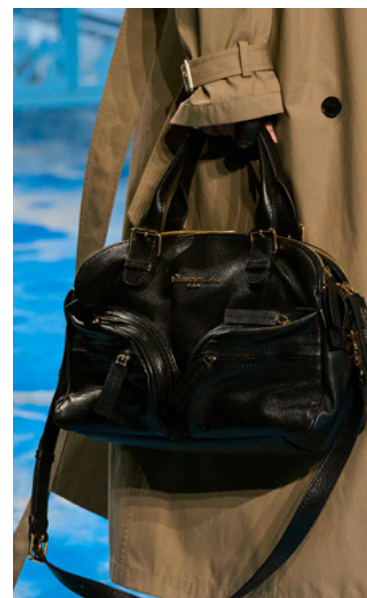
paris-street-style-171.jpg



iceberg-043.jpg



freepeople14.webp



dior-8.jpg



acne-clp-s25-093.jpg

BAGS

WOMENSWEAR

FORECASTING

SPRING/SUMMER 2026

STABLE TREND

SS26 THE BOHO SADDLE BAG



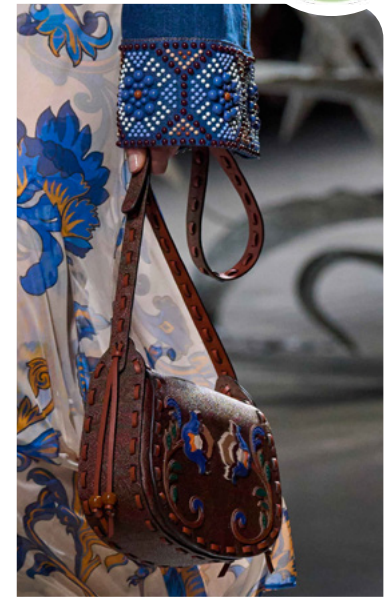
diesel-13.jpg



isabel-marant-9.jpg



gucci-131.jpg



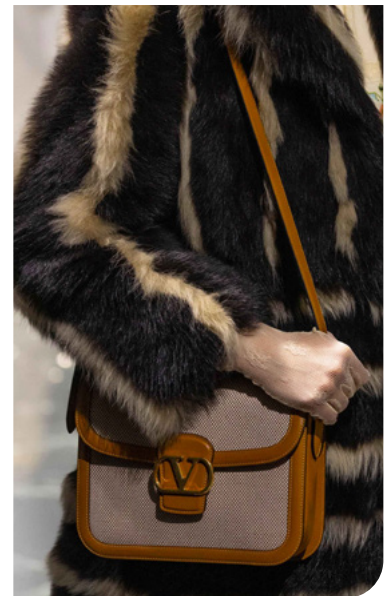
etro-5.jpg



jil-sander-34.jpg



mcqueen-11.jpg



valentino-20.jpg

BAGS

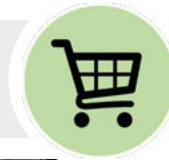
WOMENSWEAR

FORECASTING

SPRING/SUMMER 2026

STABLE TREND

SS26 THE STRUCTURED Y2K



prada-10.jpg



antoniomarras117.jpg



versace-090.jpg



prada-045.jpg



kent-curwen59.jpg



del-core-036.jpg



gucci-107.jpg

EARLY SIGN

SS26 THE STRING BAG



dior-20.jpg



paris-street-style-96.jpg



zimmermann-076.jpg



hereu4.png.webp



loewe-060.jpg



paris-street-style-155.jpg



prada-042.jpg

BAGS

WOMENSWEAR

FORECASTING

SPRING/SUMMER 2026



victoria-beckham-13.jpg



stella-mccartney-087.jpg



miumiu.jpeg



paris-street-style-90.jpg



paris-street-style-85.jpg



paris-street-style-150.jpg

MINI-BAG CHARMS

JIBBITZ





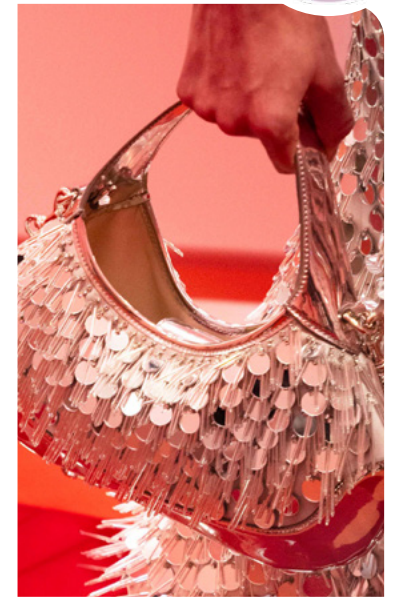
zimmermann-070.jpg



zara 36.jpg



antoniomarras112.jpg



gucci-22.jpg



sandy-liang-050.jpg



cult gaia -1.jpg.webp



staudt5.png

DATA SOURCES & ICONS

TREND GROWTH



MARKET

YEAR ON YEAR TREND GROWTH ON E-COMMERCE



SOCIAL MEDIA

YEAR ON YEAR TREND GROWTH ON INSTAGRAM



CONSUMER INTEREST

YEAR ON YEAR GROWTH OF ONLINE SEARCH VOLUMES



FASHION SHOWS

YEAR ON YEAR TREND GROWTH ON FASHION SHOWS

TREND BEHAVIOR

EDGY TREND

weak signal of a potential micro trend with very high risk

EARLY SIGN

emerging trend with growing perspective but higher risk

SAFE TREND

announced trend with growing perspective and safe risk

BIG TREND

trend with a big magnitude due to high commercial potential and quick adaption

STABLE TREND

trend that is already present in the market with flat growth

LAST CALL

trend with decreasing perspective but still having business potential

TREND MAGNITUDE



MANIFEST

AN ICONIC PRODUCT THAT IS A STABLE TREND OF LARGE MAGNITUDE WITH CONFIRMED COMMERCIAL SUCCESS



INVEST

A CORE PRODUCT REPRESENTING A STEADILY GROWING TREND OF MODERATE MAGNITUDE WITH COMMERCIAL POTENTIAL



TEST

A STATEMENT PRODUCT WITH GROWING PERSPECTIVE BUT SMALLER MAGNITUDE AND HIGHER RISK



DATA TO DRIVE

01 CREATIVITY

02 STRATEGY

03 SUSTAINABILITY



LIVETREND

THANK YOU!

You may not copy, reproduce, distribute, publish, display, perform, modify, create derivative works, transmit, or in any way exploit any such content, nor may you distribute any part of this content over any network, sell or offer it for sale, or use such content to construct any kind of database. You may not alter or remove any copyright or other notice from copies of the content on any Livetrend report.

If you have further needs, please contact us via chat.