



WOMENSWEAR
SS 2026
FORECASTING
PANTS
& SHORTS



LIVETREND

SS26 PANTS & SHORTS INTRODUCTION



FORECAST

Tailoring and Airy Volumes.

This SS26 season, pants and shorts strike a perfect balance between sharp tailoring and relaxed leisure. High and low-waist tailored designs dominate, offering flattering options for every silhouette. Here, the lengths vary widely, from elegant full-length trousers to playful shorts, ensuring versatility for all occasions. Refinement is key, with slim-fit styles and chic capris taking center stage.

Deconstructed tailoring and layered waistlines bring an edgy touch for tailored styles. At the same time, fluid satin and loose drawstring pants in cotton or linen provide breezy movement for warm weather and vacations. Rounded legshapes emerge as a defining trend, with harem pants, barrel legs, and bolder bloomer even in capris redefining unconventional elegance. For a more casual approach, track shorts and Bermudas emphasize leisure and sportiness, making them summer staples. From edgy layered designs to vacation-ready airy silhouettes, SS26 pants and shorts showcase versatility and innovation. Whether tailored or relaxed, this season's is moving away from harsher baggy and cargo fits but adds more dreamy and feminine pieces to a tailored range.

This forecasting report is realized crossreferencing LIVETREND data from several sources to empower the expertise of our Trend Analysts to forecast the trends with concrete and quantitative information. Find the related data sources and icons on the last slides.

[ACCESS ALL IMAGES
CLICKING HERE](#)

KEY DETAILS PANTS & SHORTS SS26

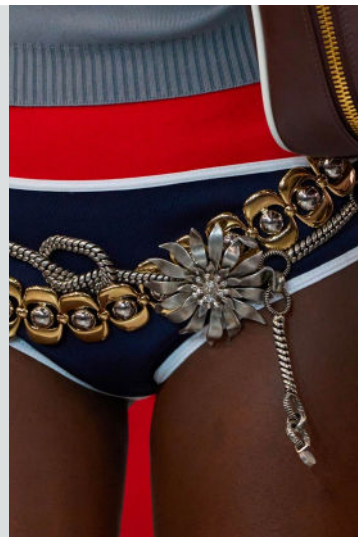


INVEST

THE SPORTY PIPING



tibi



miumiu

SAFE TREND



MANIFEST

THE DRAWSTRING



freepeople



tods

SAFE TREND



INVEST

THE LAYERED LOOK



prada-14.jpg



miumiu

EDGY TREND



TEST

THE BOXY WAIST



Victoria Beckham 102.jpg



sportmax

EDGY TREND

KEY MATERIALS PANTS & SHORTS SS26



MANIFEST



zimmermann

THE FLUID SATIN



scervino

STABLE TREND



INVEST



luar

THE LEATHER FEEL



hermes

STABLE TREND



INVEST



roberto-cavalli-087.jpg

THE TEXTURED



domino tan

EARLY SIGN



TEST



vivetta 9.jpg

THE SHEER LAYER



anteprima

SAFE TREND

SS26 PANTS & SHORTS SPOTLIGHT



MANIFEST



INVEST



TEST

HIGH-WAIST WIDE



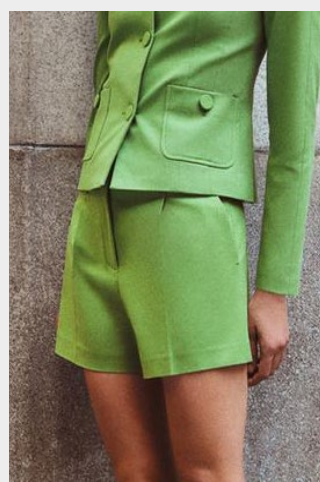
zara43.jpg

SLIM TAILORED



tory burch_8.jpg

TAILORED SHORTS



zara41.jpg

KNIT PANT



miu-miu-125.jpg

CAPRI



@rotate1 Kopie.png

HAREM



chloe 13.jpg

This Trend Spotlight proposes the must-have products of the season to build the right assortment.

This selection is made to ensure that you have the right collection staples, invest in the right core pieces and test the right trendy items within your product range.

Find the full list of seasonal core items on the next slides.

BIG TREND

SS26 THE HIGH-WAIST WIDES



Consistence 43.jpg



zara42.jpg



philosophy



sergio-hudson8.jpg



lacoste23.jpg



victoria-beckham-107.jpg



posse

PANTS

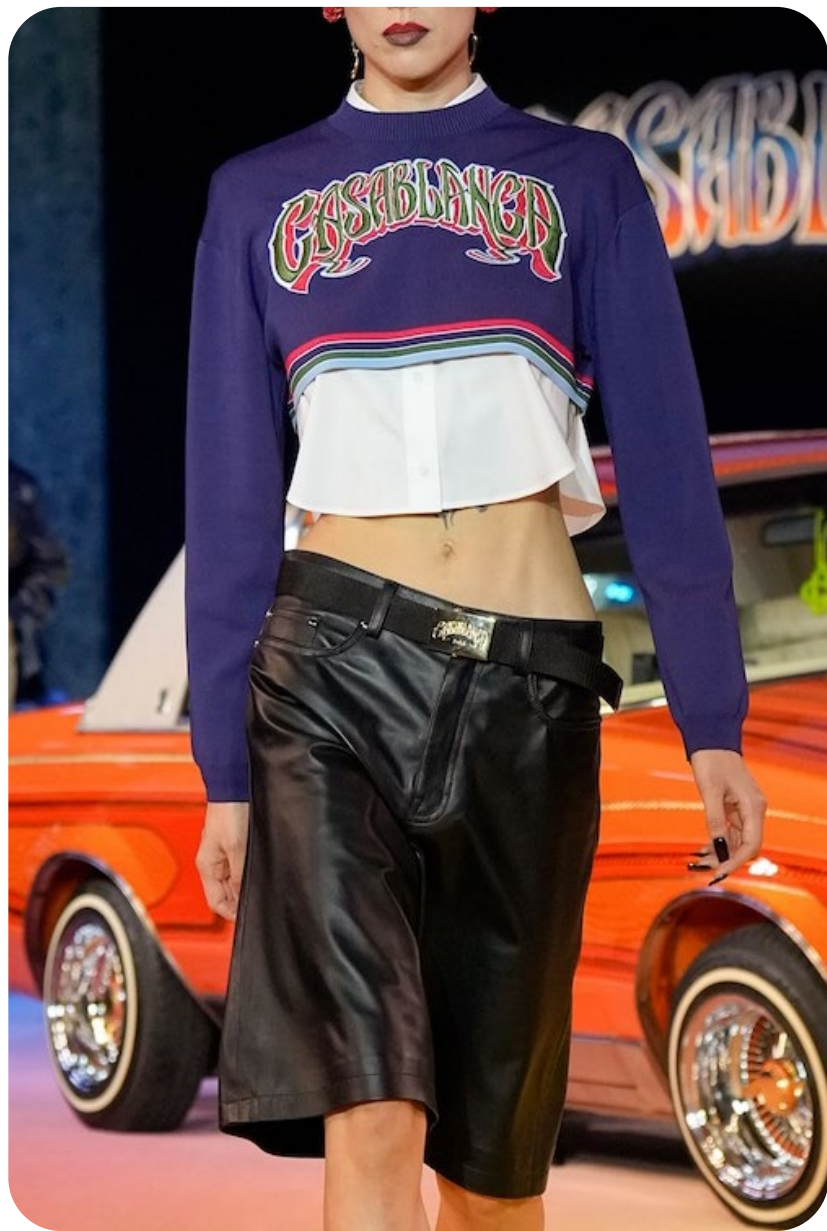
WOMENSWEAR

FORECASTING

SPRING/SUMMER 2026

BIG TREND

SS26 THE XL MEN'S BERMUDA



Casablanca Brand 7.jpg



hilfiger5 copy.jpg



streetstyle milano 119.jpg



alejandre



zimmermann-107.jpg



stella-mccartney-075.jpg



jaded london-14.jpg.webp

BIG TREND

SS26 CASUAL WIDE



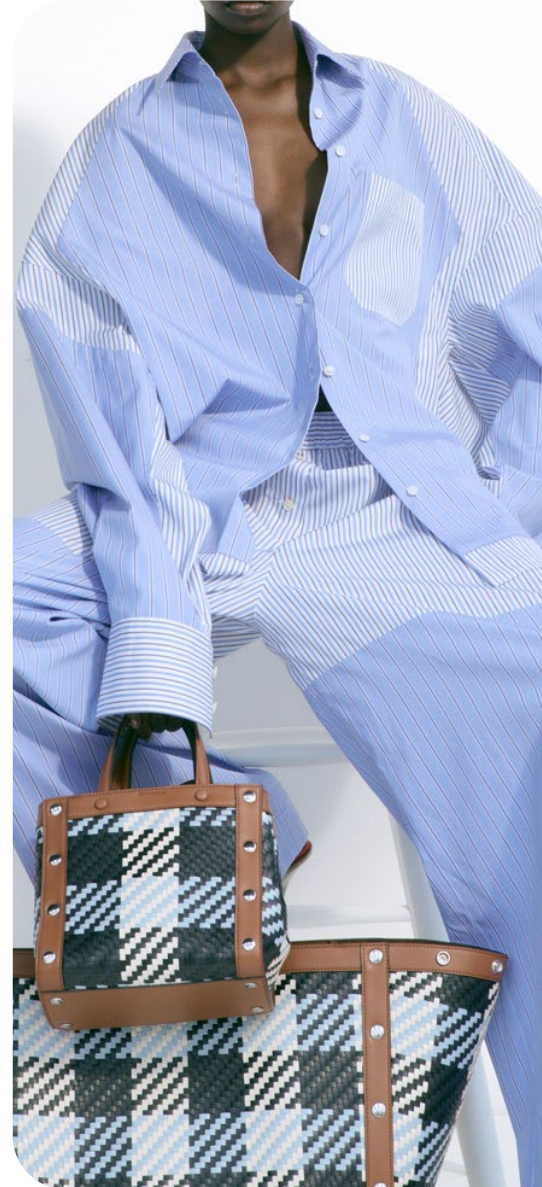
Alberta Feretti7.jpg



Copenhagen Streetstyle 44.jpg



KNWLS1.jpg



stellamccartney



freepeople 20.webp



jaded london-12.jpg.webp

LEISURE FLUID PANT

LONG COTTON PJ



BIG TREND

SS26 THE LOW-RISE TAILORING



gcds55.jpg



URBANOUTFITTERS1.webp



moschino100.jpg



Prada17.jpg



markgong3.png



peter-do8.jpg



stella-mccartney-072.jpg

STABLE TREND

SS26 THE TAILORED SHORT



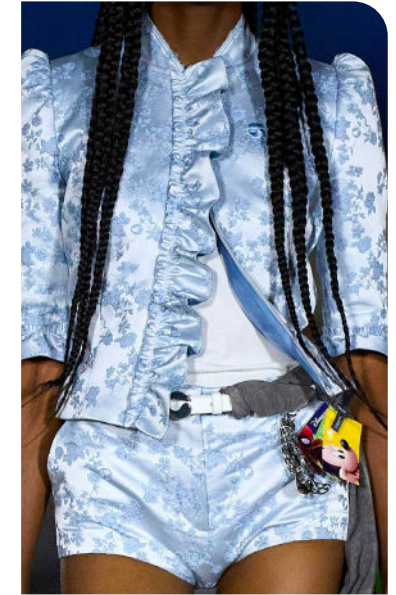
zara41.jpg



nanajacqueline 6.jpg



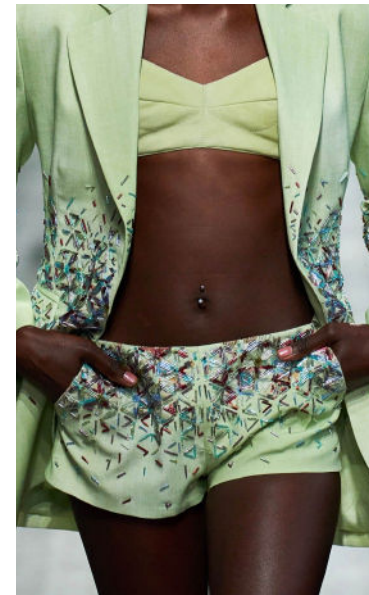
streetstyle paris 58.jpg



coperni-018.jpg



gucci-1.jpg



scervino-016.jpg



helenanthony.jpg

PANTS

WOMENSWEAR

FORECASTING

SPRING/SUMMER 2026

STABLE TREND

SS26 THE FLUID SILKY PANT



roberto-cavalli-090.jpg



ulla-johnson-137.jpg



Dries van Noten 8.jpg



Zara_48.jpg



collina-strada14.jpg



streetstyle paris_298.jpg



van-noten83.jpg

SAFE TREND

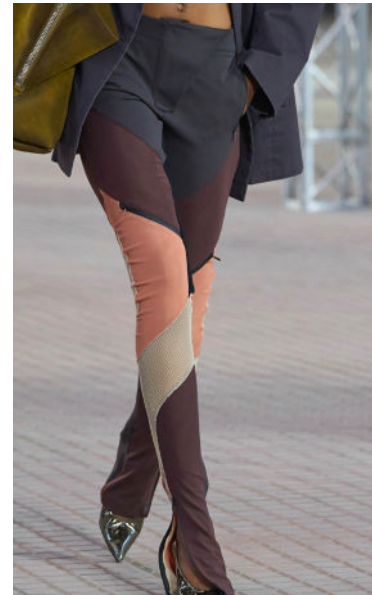
SS26 THE LOW-RISE KNIT PANT



nensi dojaka-3.jpg



scervino-069.jpg



attico-021.jpg



etro-multi-knitwear-trousers-woman-2.jpg



miu-miu-125.jpg



off-white-040.jpg



ottolinger15.jpg

PANTS

WOMENSWEAR

FORECASTING

SPRING/SUMMER 2026



SAFE TREND

SS26 THE CAPRI



copenhagen streetstyle



@rotatel Kopie.png



@emilisindlev13.png



reformation.webp



-mango-.avif



sandyliang2.jpg



house of CB.webp





yuhan wang8 Kopie.jpg



@helsastudio_9.png



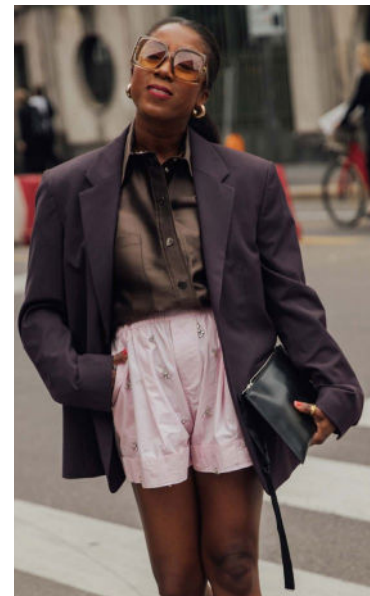
the-frankie-shop-blue-lil-fluid-boxer-shorts.jpg



baumferdgarten2.jpg



vent 2.jpg



streetstyle milan_327.jpg



Rabanne 7.jpg

SAFE TREND

SS26 THE SLIM TAILORED



Tory Burch



streetstyle milan_323.jpg



arestudoss2500487ca0e002854b6b85pg



max-mara-061.jpg



Tods9.jpg



ulla-johnson-142.jpg



hong11.jpg

PANTS

WOMENSWEAR

FORECASTING

SPRING/SUMMER 2026



SAFE TREND

SS26 THE BALOON LEG



burberry-059.jpg



ujoh11.jpg



tibi13.jpg



attico-024.jpg



bottega



toteme



kronthaler-westwood13.jpg

SAFE TREND

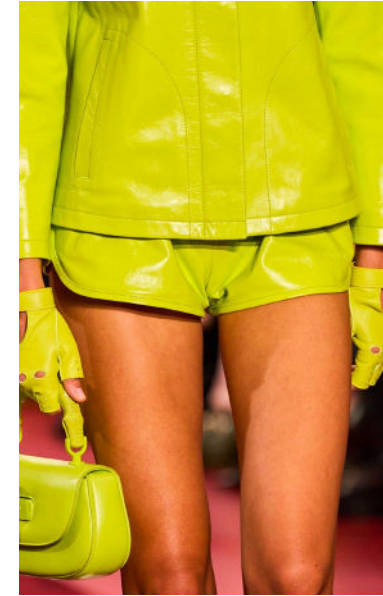
SS26 THE SPORTY SHORT



staudt 4.jpg



casablanca128 copy.jpg



gucci-087.jpg



@blancamiro2.png



zara45.jpg



dior-094.jpg



@ritamontezuma28.png

PANTS

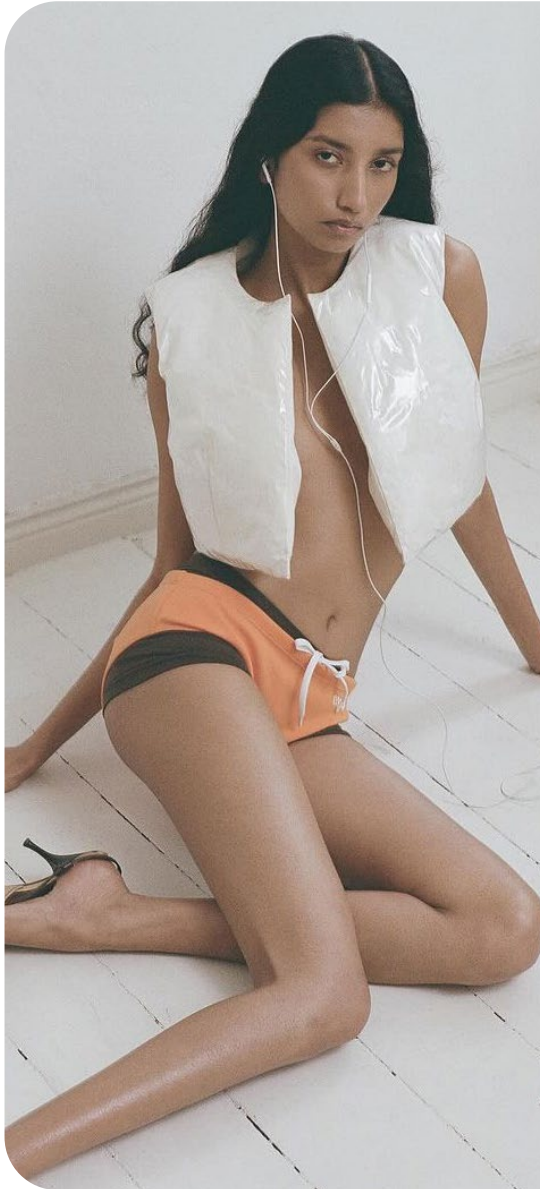
WOMENSWEAR

FORECASTING

SPRING/SUMMER 2026



SS26 THE PANTY



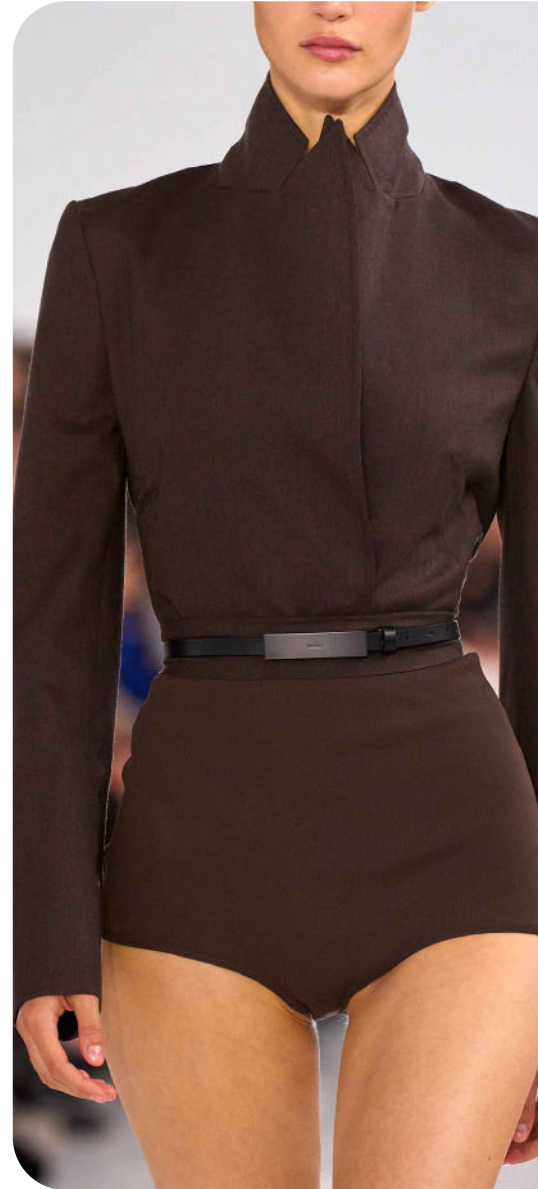
@stormmodels.jpg



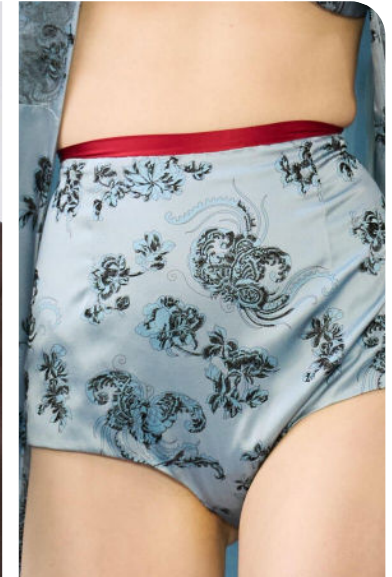
miumiu 17.jpg



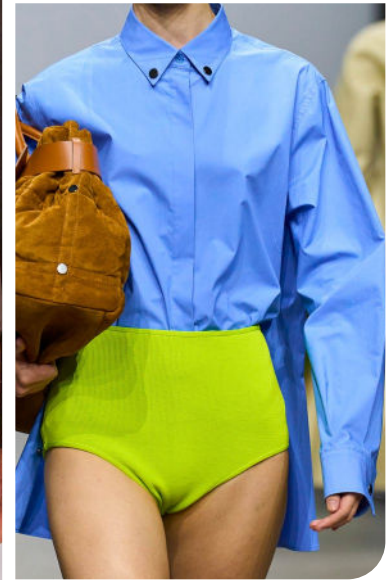
opera.png



max-mara-8.jpg



HUI 36.jpg



iceberg-009.jpg

SWIM STYLES

HIGH-WAIST

EARLY SIGN

SS26 THE HAREM PANT



alaia



loewe-066.jpg



Aeron 2.jpg



chloe 13.jpg



Philosophy di Lorenzo -8.jpg



andreadamo27.jpg



freepeople 28.webp

EARLY SIGN

SS26 THE WIDE CROP



zara30.jpg



pasqualetti13.jpg



zara22.jpg



EmporioArmani34.jpg



MANGO-.avif



apricot



streetstyle milan_385+.jpg

PANTS

WOMENSWEAR

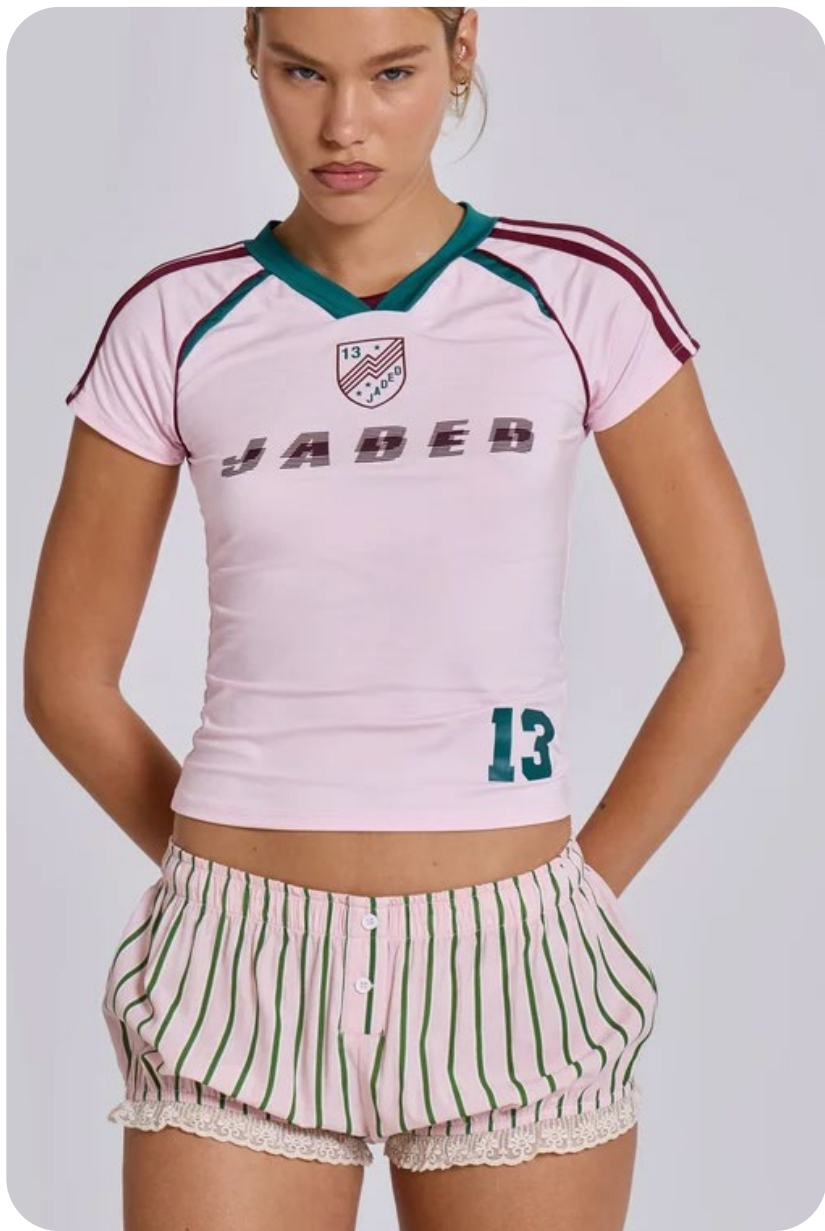
FORECASTING

SPRING/SUMMER 2026



EDGY TREND

SS26 THE BLOOMERS



jaded london-1.jpg.webp



shan huq



URBANOUTFITTERS12.webp



NY Streetstyle 20.jpg



Rotate20.jpg

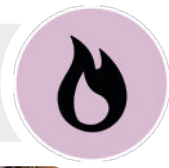


chloe-132.jpg



laquan smith_7.jpg





@freepeople_13.png



zara36.jpg



URBANOUTFITTERS7.webp



chloe-139.jpg



URBANOUTFITTERS11.webp



freepeople 21.webp

OPENWORK SHORT

CAPRI BLOOMER





victoria-beckham-111.jpg



monse4.jpg



rokh15.jpg



Bottega Veneta 1.jpg



ujoh12.jpg



uma-wang52.jpg



stella-mccartney-071.jpg

DATA SOURCES & ICONS

TREND GROWTH



MARKET

YEAR ON YEAR TREND GROWTH ON E-COMMERCE



SOCIAL MEDIA

YEAR ON YEAR TREND GROWTH ON INSTAGRAM



CONSUMER INTEREST

YEAR ON YEAR GROWTH OF ONLINE SEARCH VOLUMES



FASHION SHOWS

YEAR ON YEAR TREND GROWTH ON FASHION SHOWS

TREND BEHAVIOR

EDGY TREND

weak signal of a potential micro trend with very high risk

EARLY SIGN

emerging trend with growing perspective but higher risk

SAFE TREND

announced trend with growing perspective and safe risk

BIG TREND

trend with a big magnitude due to high commercial potential and quick adaption

STABLE TREND

trend that is already present in the market with flat growth

LAST CALL

trend with decreasing perspective but still having business potential

TREND MAGNITUDE



MANIFEST

AN ICONIC PRODUCT THAT IS A STABLE TREND OF LARGE MAGNITUDE WITH CONFIRMED COMMERCIAL SUCCESS



INVEST

A CORE PRODUCT REPRESENTING A STEADILY GROWING TREND OF MODERATE MAGNITUDE WITH COMMERCIAL POTENTIAL



TEST

A STATEMENT PRODUCT WITH GROWING PERSPECTIVE BUT SMALLER MAGNITUDE AND HIGHER RISK

PANTS

WOMENSWEAR

FORECASTING

SPRING/SUMMER 2026



DATA TO DRIVE

01 CREATIVITY

02 STRATEGY

03 SUSTAINABILITY



LIVETREND

THANK YOU!

You may not copy, reproduce, distribute, publish, display, perform, modify, create derivative works, transmit, or in any way exploit any such content, nor may you distribute any part of this content over any network, sell or offer it for sale, or use such content to construct any kind of database. You may not alter or remove any copyright or other notice from copies of the content on any Livetrend report.

If you have further needs, please contact us via chat.