



WOMENSWEAR
SS 2026
FORECASTING
KNITWEAR
KEY ITEMS



LIVETREND

SS26 KNITWEAR INTRODUCTION



FORECAST

Sultry Chic meets Artisanal Femininity

For SS26 womens' knitwear, a mix of sultry cuts and refined craftsmanship defines the season. Plunging necklines and petite button-up pieces take center stage, offering sensuality with a minimalist touch. Sartorial fine knits maintain relevance but are reimagined with edgy twists, including layered or asymmetrical styling. Elbow-length sleeves make a chic statement, while lightweight henley tops and mini cardigans—whether paired with panty shorts or worn solo—introduce a delicate, feminine charm. Adding structure to the lineup, chunky-collar cardigans and retro-inspired polos infuse a touch of masculine balance. Meanwhile, artisanal crochet blouses and dresses adorned with fringes emerge as standout highlights, bringing a tactile, handcrafted quality to the range. Meanwhile, bras and crop tops regain momentum after a period of stagnation, affirming their versatility and allure as key components of modern knitwear wardrobes.

This eclectic mix of styles celebrates a fusion of bold, nostalgic, and artisanal elements, pushing knitwear into fresh, fashion-forward territory.

This forecasting report is realized crossreferencing LIVETREND data from several sources to empower the expertise of our Trend Analysts to forecast the trends with concrete and quantitative information. Find the related data sources and icons on the last slides.

**ACCESS ALL IMAGES
CLICKING HERE**

SS26 KNITWEAR KEY DETAILS

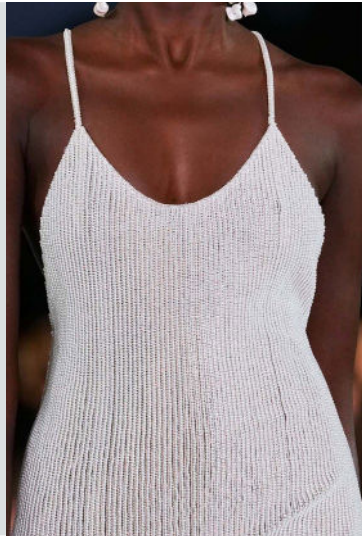


MANIFEST



zara

THE DEEP NECKLINE



ralph lauren



INVEST



Chiara Robini

THE ROMANTIC ONE



coperni



MANIFEST



prada .webp

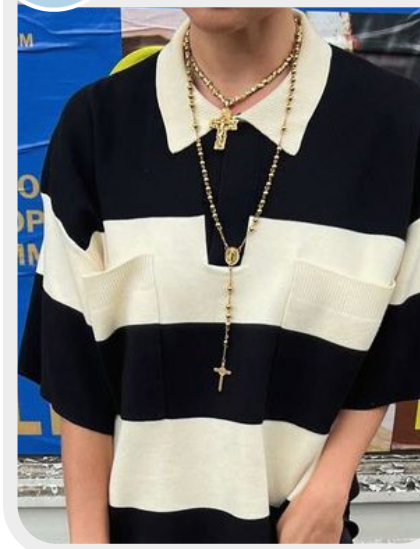
THE HALTER



tommy hilfiger

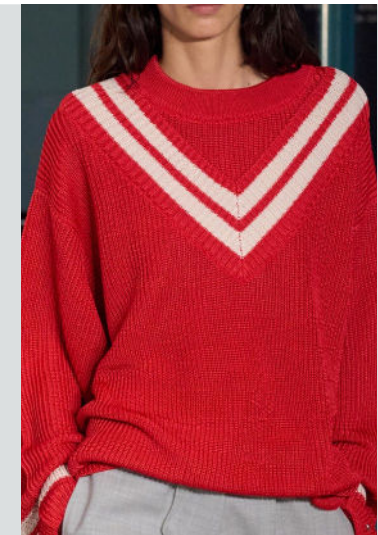


INVEST



mo&co.jpeg

THE SPORTY LOOK



tommy hilfiger

SS26 KNITWEAR KEY DETAILS

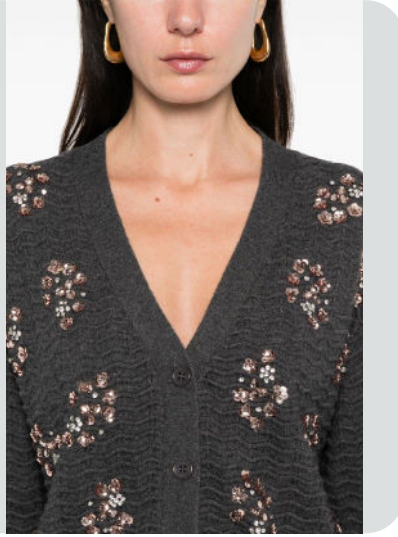


MANIFEST



zara

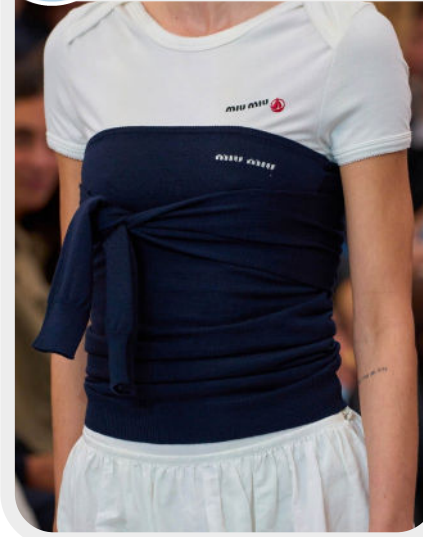
THE EMBELLISHED



ralph lauren

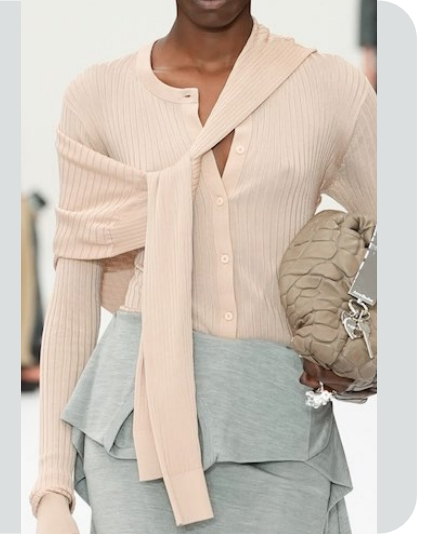


INVEST



Chiara Robini

THE KNOT KNIT



coperni

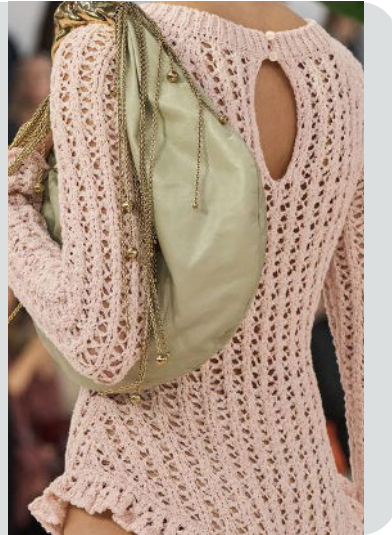


INVEST



CHANEL.jpg

THE OPEN CROCHET



CHLOÉ

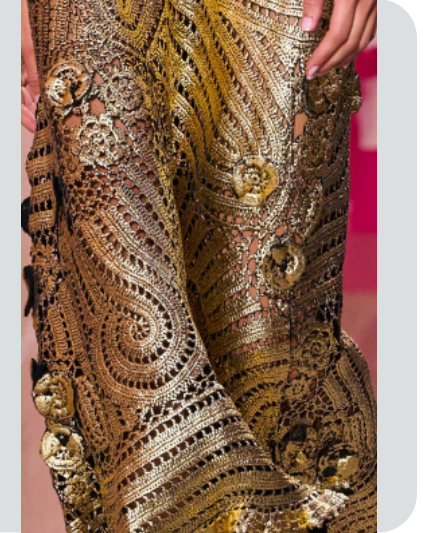


MANIFEST



ACNE STUDIO.jpg

THE FLOWER POWER



tommy hilfiger

KNITWEAR SS26 SPOTLIGHT



MANIFEST



INVEST



TEST

MINI POLO



versace-033.jpg

MINI CARDIGAN



008shubing052620240114.jpg

DEEP PLUNGE



ferragamo

KNOTTED PIECE



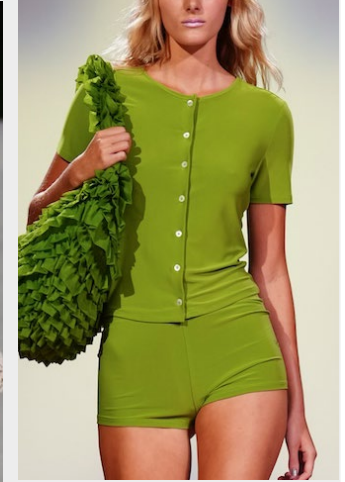
miu-miu-059.jpg

CROCHET BLOUSE



ralph lauren

MINI SET



sandy liang

This Trend Spotlight proposes the must-have products of the season to build the right assortment.

This selection is made to ensure that you have the right collection staples, invest in the right core pieces and test the right trendy items within your product range.

Find the full list of seasonal core items on the next slides.



KNITWEAR
TOPS
KEY ITEMS



LIVETREND

BIG TREND

SS26 TIGHT RETRO POLOS



the frankie shop.webp



versace-033.jpg



Emilia Wickstead 4.jpg



no21



miumiu9.jpg



casablanca-050.jpg



siedres



BIG TREND

SS26 SCOPING TANKS



gucci-058.jpg



fendi-029.jpg



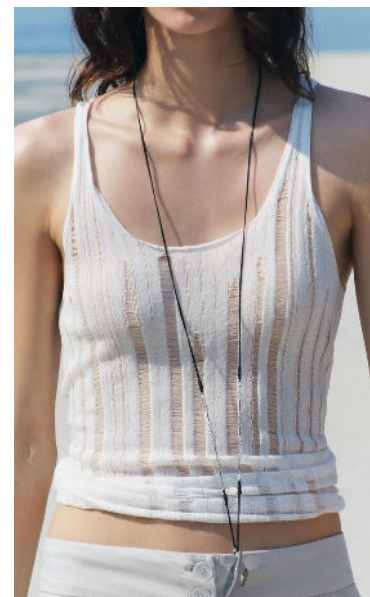
the row



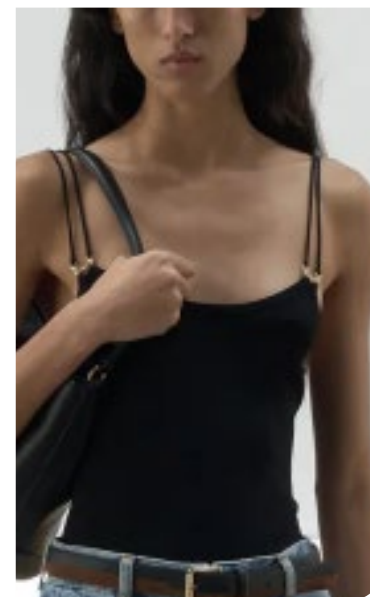
staud



ganni-011.jpg



_zara21.jpg



sandro

SAFE TREND

SS26 DEEP V-NECK



onia



Ferrari-12.jpg



nesi dojaka



ferragamo



kronthaler-westwood-031.jpg



zimmermann-052.jpg



miumiu4.avif

SAFE TREND

SS26 FINE GAUGE SWEATER



shushu tong



prada-022.jpg



aya



streetstyle



self portrait4.jpg



streetstyle london 8.jpg



coperni-021.jpg



SAFE TREND

SS26 OFF-SHOULDER ELEGANCE



ayamuse4.png



streetstyle london 15.jpg



ecber.png



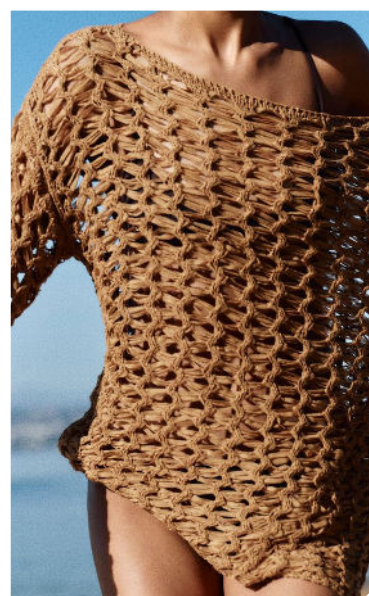
streetstyle



demeulemeester 8.jpg



-guizio-.avif



zara2.jpg



SAFE TREND

SS26 ELBOW SLEEVE KNIT



gabriela hearst.jpg



fendi-12.jpg



no21



zara



ganni-010.jpg



streetstyle copenhagen_67.jpg



peter do



SAFE TREND

SS26 CROCHET OVERSIZE POLO



versace



iceberg-008.jpg



time



versace



all that remains



stine goya 8.png



mcmanus2.jpg



EARLY SIGN

SS26 BOHEMIAN CROCHET TOP



chloe-063.jpg



sideswhite-sleeves-fute-bce-slee-neck-cotton-shirt.jpg



_zara27.jpg



by marlene birger



ralph lauren6 Kopie.jpg



forloveandlemons 2.jpg.webp



ULLA JONHSON.jpg



EDGY TREND

SS26 CROPPED MICRO TOPS



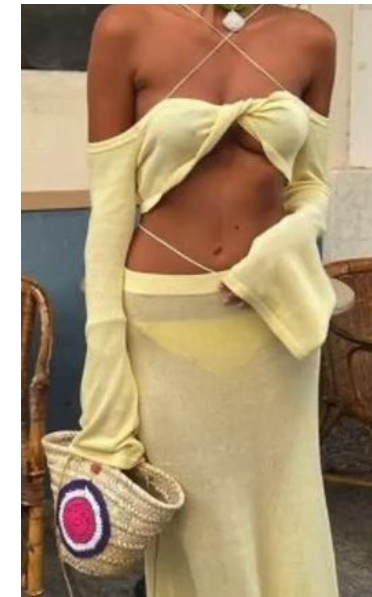
hermes-021.jpg



scervino-030.jpg



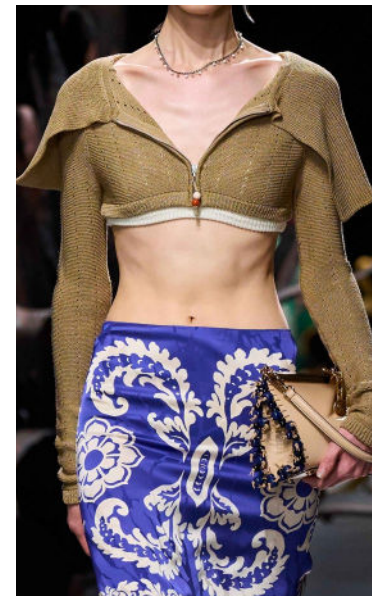
16Arlington 13.jpg



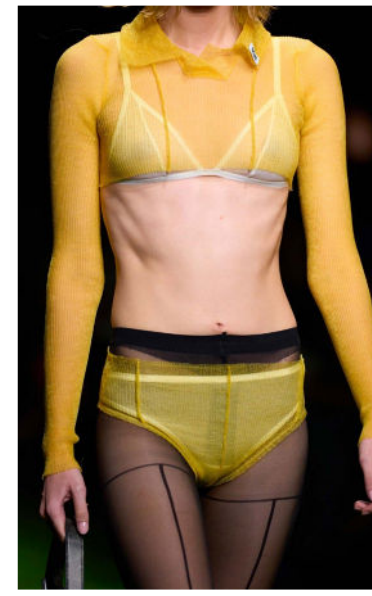
byyoungcollages



Sportmax-015.jpg



etro-8.jpg

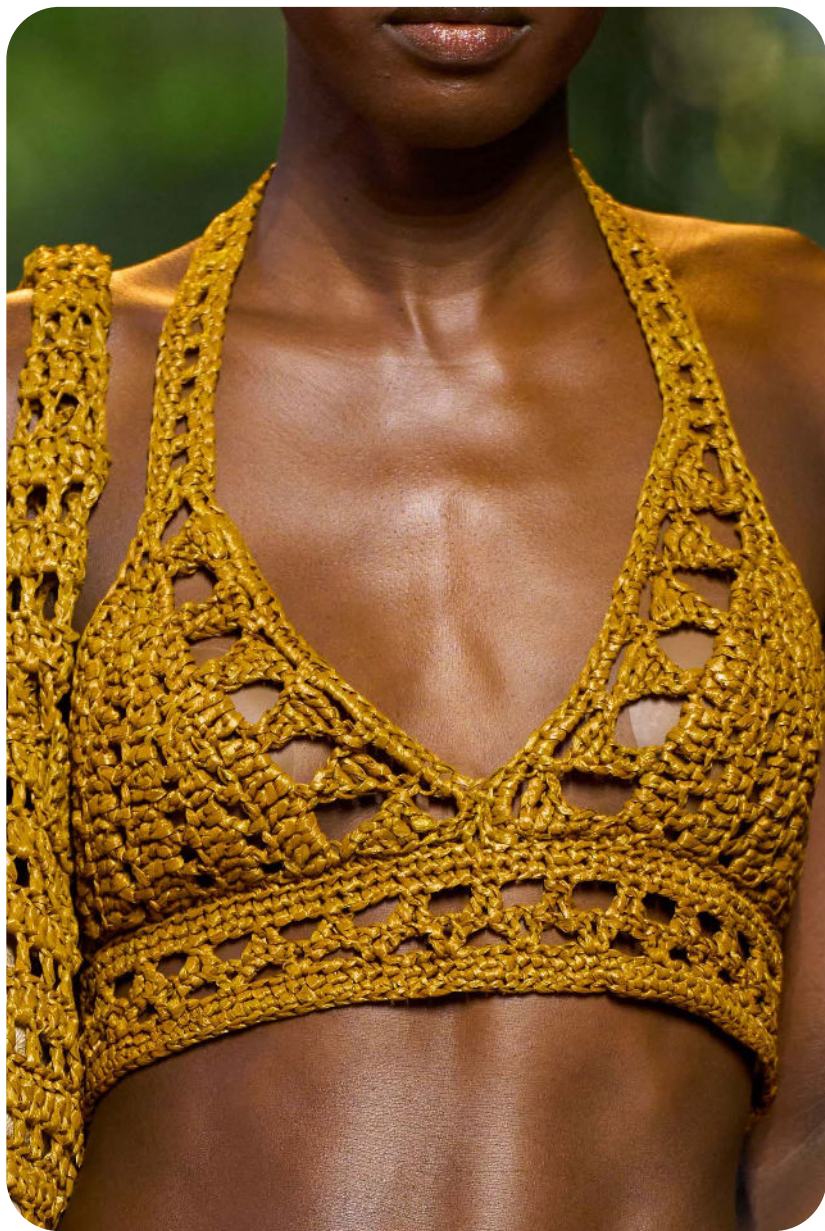


gcds-029.jpg



EDGY TREND

SS26 BRALETTES



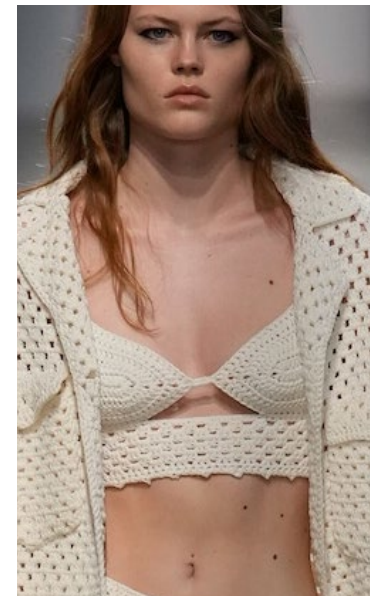
elie-saab-037.jpg



jacquemus.avif



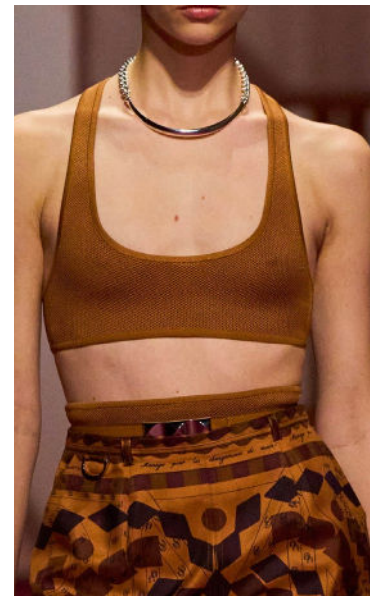
simkhai



scervino



nanushka.webp



hermes-026.jpg



siedres





KNITWEAR
**CARDIGANS &
SETS**



LIVETREND

BIG TREND

SS26 MINI CARDIGAN



shushu tong



jil-sander-11.jpg



streetstyle milan_137.jpg



zara



holzweiler



vivetta 7.jpg



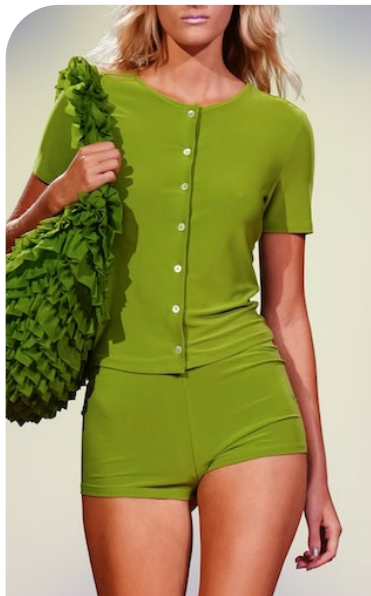
urban outfitters10.webp

SAFE TREND

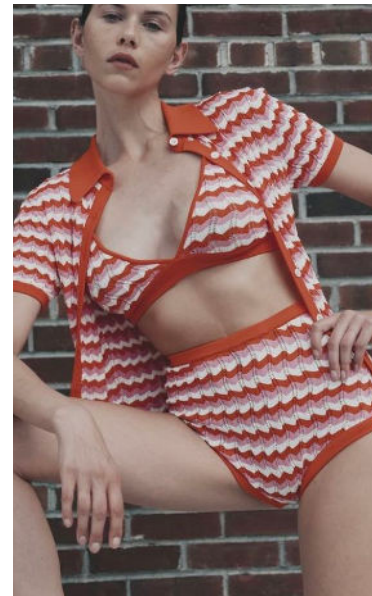
SS26 MINI SETS



Vivetta-1.jpg



sandyliang6.jpg



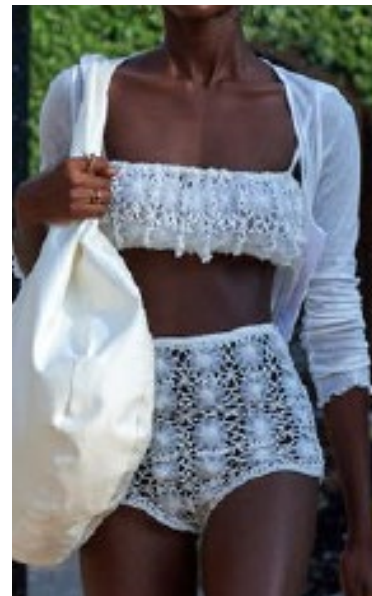
@ronnykobo 7.png



baum & pferdgarten



Coperni24.jpg



rotate



fendi-09.jpg



STABLE TREND

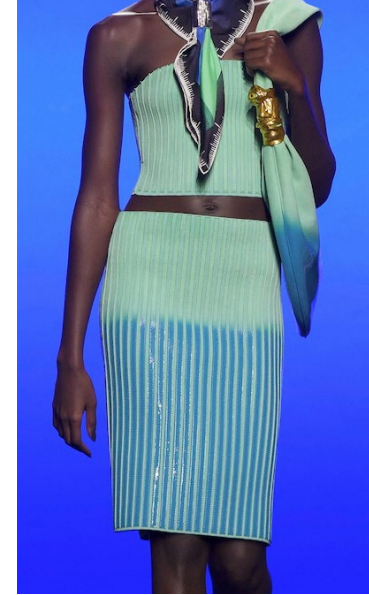
SS26 PENCIL SETS



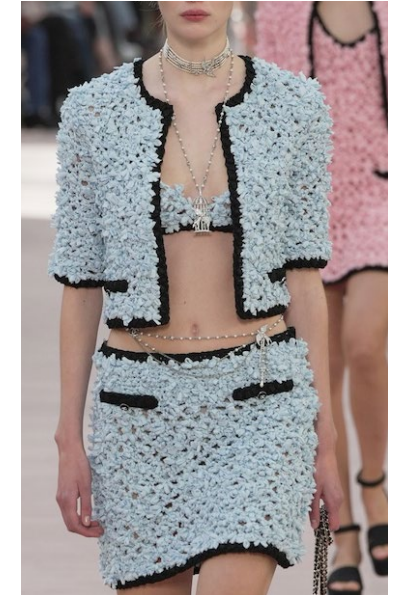
streetstyle paris 43.jpg



bottega-veneta-035.jpg



schiaparelli 26.jpg



chanel



streetstyle paris 30.jpg



simkhai.jpeg



Aeron3.jpg

EARLY SIGN

SS26 SCULPTED STYLES



Missoni-3.jpg



melitta baumeister



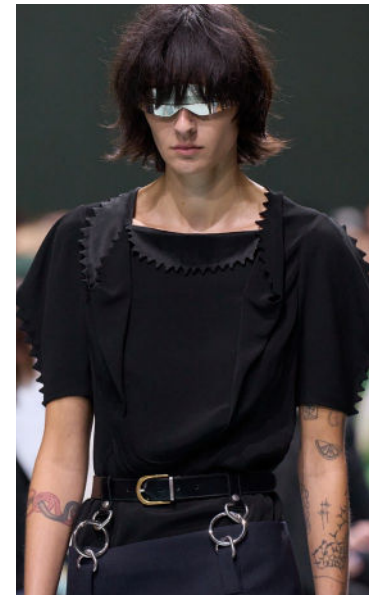
bottega veneta



aje



ulla johnson



prada



sacai.png



EARLY SIGN

SS26 CHUNKY COLLAR CARDIGAN



No.21



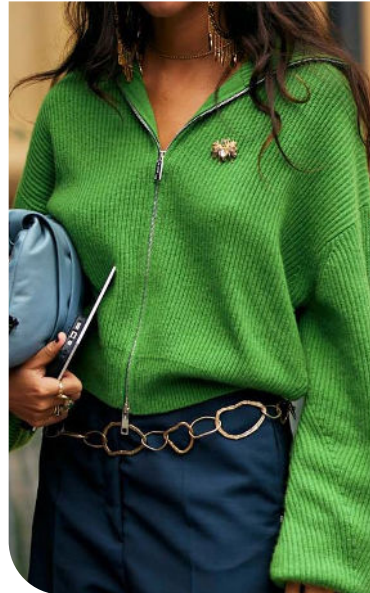
sezane.avif



etro-20.jpg



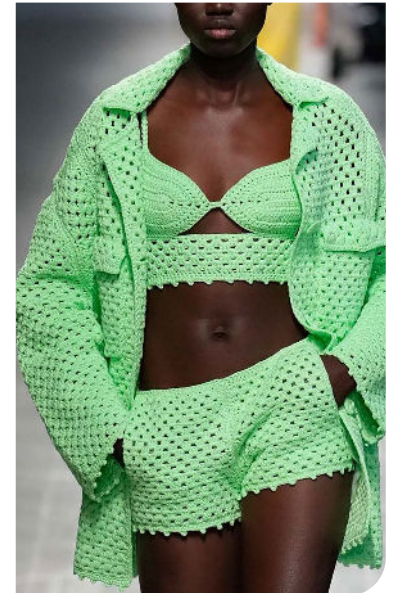
kendam archive



streetstyle milan_69.jpg



st john4.jpg



Scervino-3.jpg

EDGY TREND

SS26 THE LONG CARDI



fendi.avif



tg_botanical10.png



nanushka 9.jpg



kendam archive



sonia rykiel.jpg



etro



Iceberg-12.jpg

EDGY TREND

SS26 REVERSED PIECES



Acne Studios 20.jpg



adam-leenaerd-030.jpg



shushutong



versace



esber 46.jpg



miu-miu-059.jpg



atxv 4.jpg





KNITWEAR
DRESS
KEY ITEMS



LIVETREND

BIG TREND

SS26 CROCHET PLUNGING DRESS



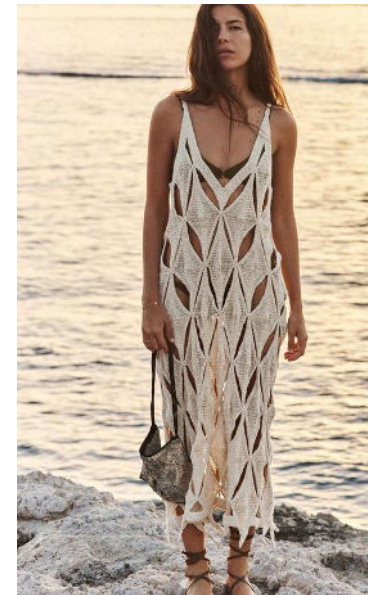
ulla-johnson-123.jpg



OSCAR DE LA RENTA



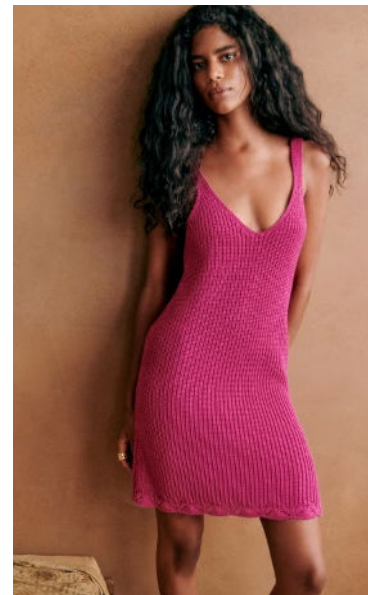
the elder statesman



versace



Christian Weijnants 2.jpg



sezane 7.jpg.avif



elie-saab-2.jpg



STABLE TREND

SS26 SLIM SLEEVELESS



Gabriela-Hearst-01.jpg



lela rose



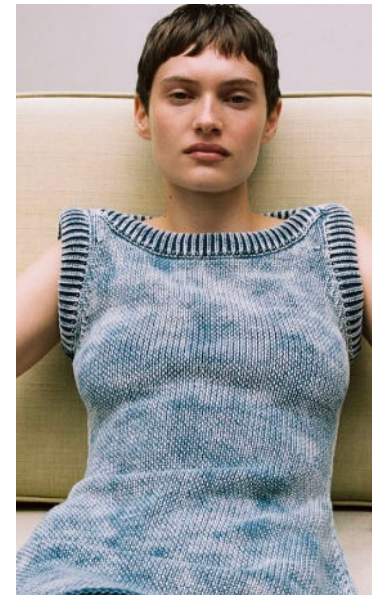
_zara7.jpg



versace



@simkhai2.png



@ayamuse 13.png

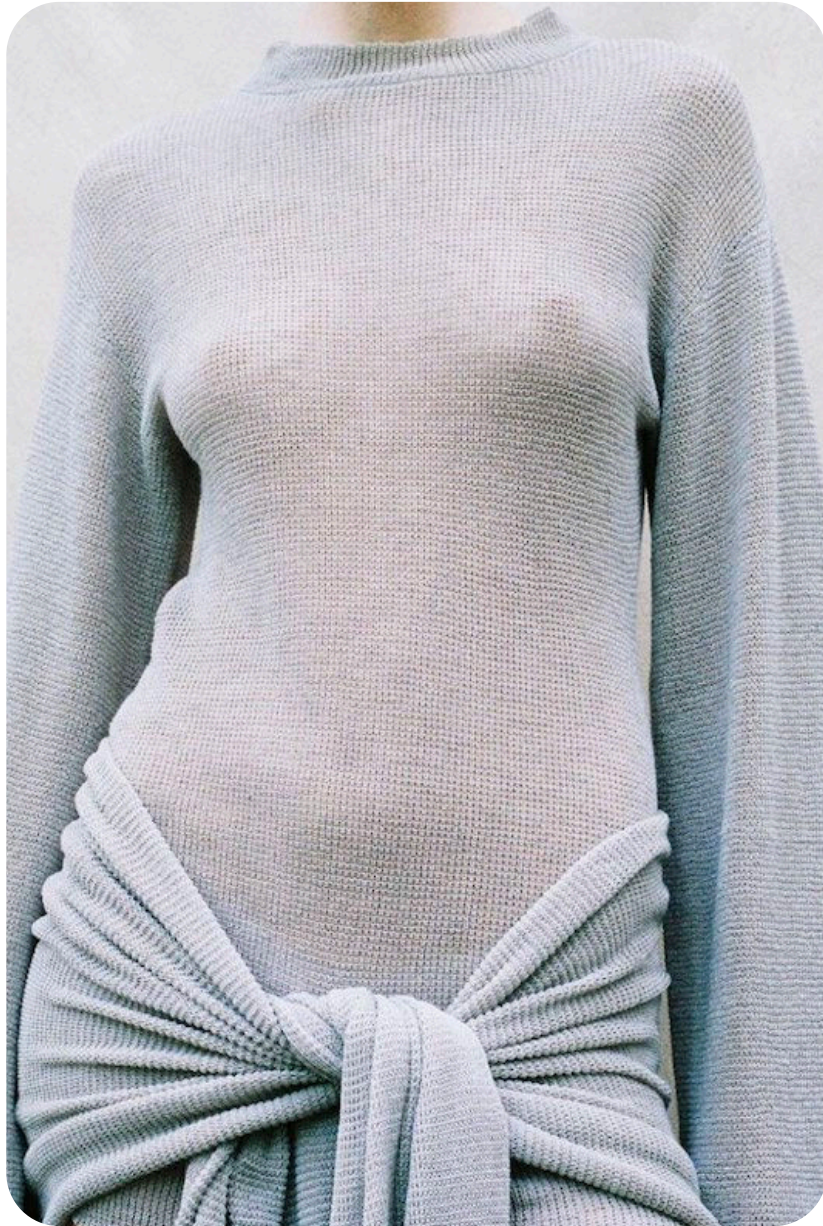


JW anderson



STABLE TREND

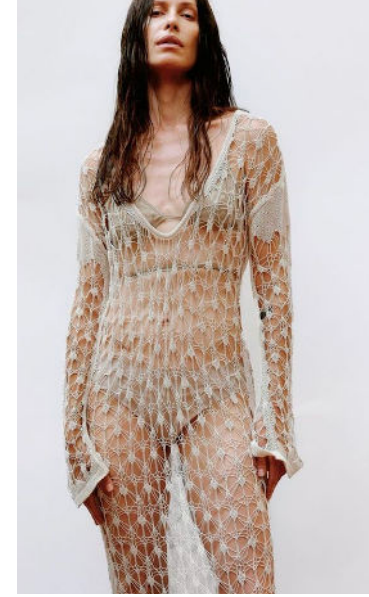
SS26 LONGSLEEVE LIGHT LAYER



@ayamuse 9.png



gabriela hearst



@tg.botanical2.png



elder statesman



the garment



anteprima



rag bone



SAFE TREND

SS26 FRINGE DRESS



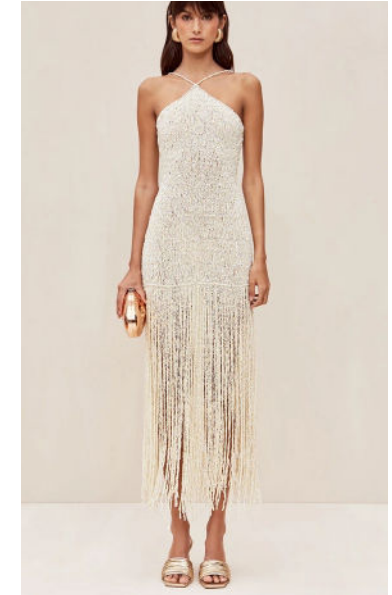
nanushka 1.jpg



Gabriela-Hearst-03.jpg



_zara14.jpg



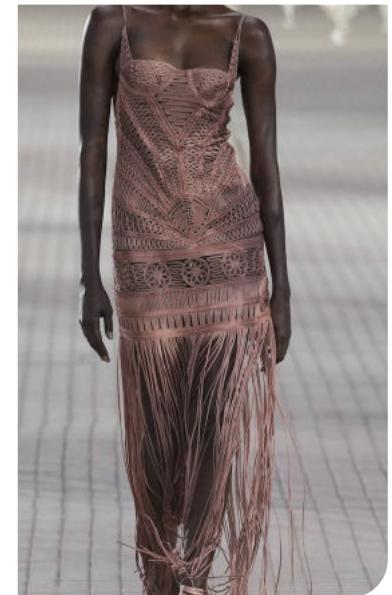
cult gaia



killentar



simkhai



The Attico 10.jpg

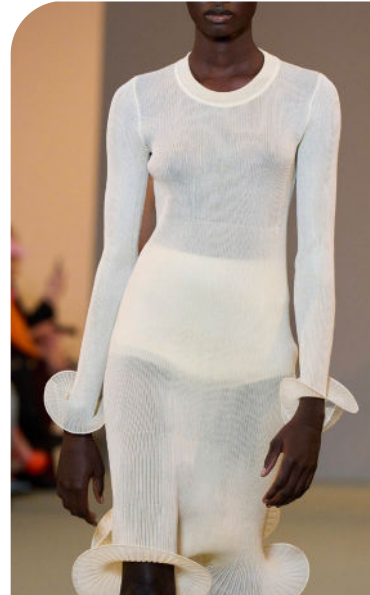


SAFE TREND

SS26 ELEGANT RIB DRESS



proenza-schouler-pswl-white-kim-knit-dress-in-compact-pointelle-rib.jpg



del-core-043.jpg



cultgaia4.jpg.webp



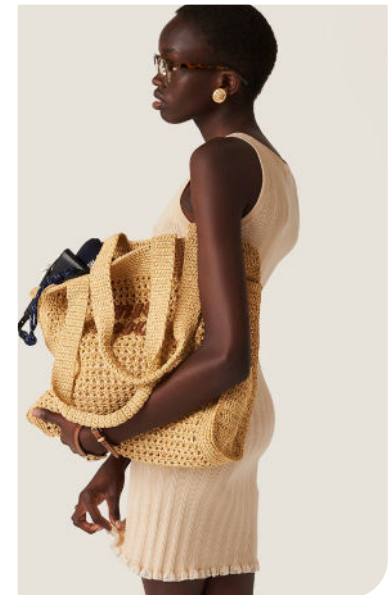
jil sander



freepeople28.webp



@altuzarra_11.png



miumiu6.avif



DATA SOURCES & ICONS

TREND GROWTH



MARKET

YEAR ON YEAR TREND GROWTH ON E-COMMERCE



SOCIAL MEDIA

YEAR ON YEAR TREND GROWTH ON INSTAGRAM



CONSUMER INTEREST

YEAR ON YEAR GROWTH OF ONLINE SEARCH VOLUMES



FASHION SHOWS

YEAR ON YEAR TREND GROWTH ON FASHION SHOWS

TREND BEHAVIOR

EDGY TREND

weak signal of a potential micro trend with very high risk

EARLY SIGN

emerging trend with growing perspective but higher risk

SAFE TREND

announced trend with growing perspective and safe risk

BIG TREND

trend with a big magnitude due to high commercial potential and quick adaption

STABLE TREND

trend that is already present in the market with flat growth

LAST CALL

trend with decreasing perspective but still having business potential

TREND MAGNITUDE



MANIFEST

AN ICONIC PRODUCT THAT IS A STABLE TREND OF LARGE MAGNITUDE WITH CONFIRMED COMMERCIAL SUCCESS



INVEST

A CORE PRODUCT REPRESENTING A STEADILY GROWING TREND OF MODERATE MAGNITUDE WITH COMMERCIAL POTENTIAL



TEST

A STATEMENT PRODUCT WITH GROWING PERSPECTIVE BUT SMALLER MAGNITUDE AND HIGHER RISK



DATA TO DRIVE

01
CREATIVITY

02
STRATEGY

03
SUSTAINABILITY



LIVETREND

THANK YOU!

You may not copy, reproduce, distribute, publish, display, perform, modify, create derivative works, transmit, or in any way exploit any such content, nor may you distribute any part of this content over any network, sell or offer it for sale, or use such content to construct any kind of database. You may not alter or remove any copyright or other notice from copies of the content on any Livetrend report.

If you have further needs, please contact us via chat.