



**KIDSWEAR**  
SS 2026  
FORECASTING  
**KNITWEAR**



LIVETREND

# SS26 KIDS KNITWEAR INTRODUCTION



scimparello\_magazine (1).jpeg



Seed Heritage.jpg



FUB\_1.jpg



@veinkids3.png



## FORECAST

### Artisanal Fun.

SS26 kids' knitwear brings a fresh perspective by embracing intricate craftsmanship and playful versatility. Inspired by trends in the adult market, crochet influences add artisanal charm to kids' wardrobes. Key pieces include crochet shirts, tanks, dresses, and pants, offering a tactile, handmade aesthetic that's both stylish and comfortable for warm-weather dressing. For a softer, more romantic touch, pointelle knits take center stage. These delicate textures are beautifully reimagined in cardigans, making them perfect layering pieces with a dreamy, vintage appeal. Adding to the collection's versatility, the maritime trend appears in sailor-inspired sweaters and playful mini panty shorts, providing a nod to nautical chic while staying functional for spring and summer adventures. Meanwhile, retro sporty aesthetics remain a beloved mainstay. Retro polos and prim knit tees channel nostalgia while offering casual elegance and comfort for active days. This season's knitwear balances the intricacies of fine craftsmanship with functional and stylish staples. From bohemian crochet pieces to preppy maritime designs and nostalgic sporty classics, SS26 kids' knitwear offers a variety of textures and styles for every personality and occasion.

*This forecasting report is realized crossreferencing LIVETREND data from several sources to empower the expertise of our Trend Analysts to forecast the trends with concrete and quantitative information. Find the related data sources and icons on the last slides.*

**ACCESS ALL IMAGES  
CLICKING HERE**

BIG TREND

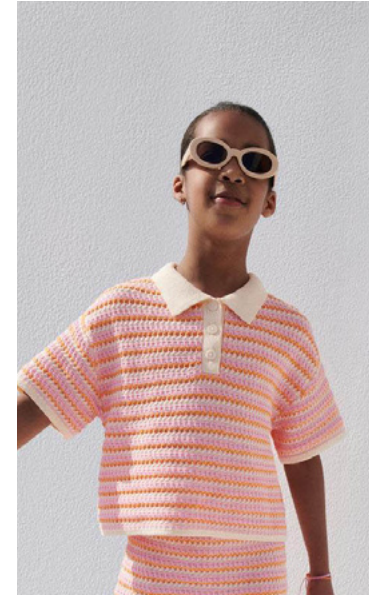
# SS26 THE RETRO POLO



coco au lait.jpg



misha\_and\_puff (2).jpeg



zara\_61.jpg



FUB.jpg



FUB\_l.jpg



knitplanet\_24.jpg



Fin and Vince.jpg



BIG TREND

# SS26 THE CROCHET SHIRT



bebe\_organic (4).jpeg



Zara 88.jpg



fishandkids.jpeg



knitplanet\_19.jpg



Next.jpg



zarakids (9).jpeg



Maurie & Eve.jpg



@gingersnaps.png



zarakids (2).jpeg



Seed Heritage.jpg



ligne noir.webp



Luka Belle.jpg



Zara 47.jpg

SUMMER STRIPES

CROCHET

STABLE TREND

# SS26 THE BOLD V-NECK CARDI



thecampamento (3).jpeg



thecampamento (2).jpeg



mini\_rodini (6).jpeg



wynkenkids (1).jpeg



thepicnicdaynyc (1).jpeg



Shan and Toad 2.jpg



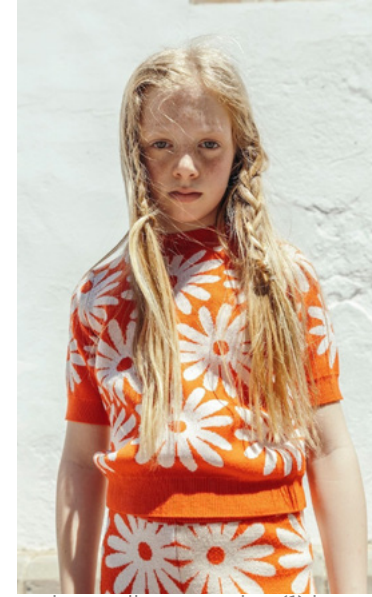
Milk Teeth.jpg



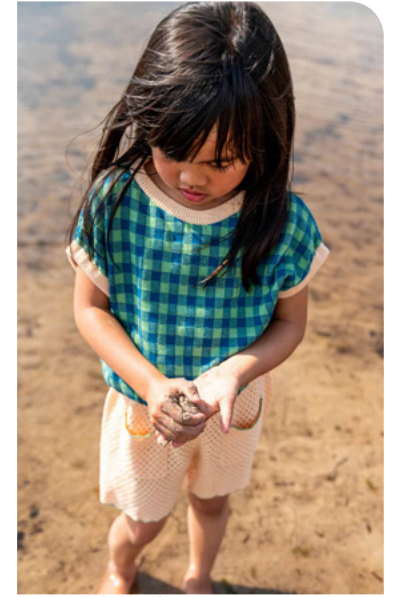
knitplanet\_112.jpg



hello\_simone.jpeg



scimparello\_magazine (1).jpeg



knitplanet\_13.jpg



zara\_20.jpg



weare\_thenewsociety (3).jpeg



wynkenkids.jpeg



@zarakids11.png



coosje and julius 3.JPG



zara\_29.jpg



Pepa London.jpg



Taller Celeste.jpg



FUB\_1.jpg



Copenhagen.jpg



EARLY SIGN

# THE SAILOR STYLE



@fishandkids6.jpg



liebello\_1.jpg



W Concept.jpg

SABLE TREND

# THE COLOR-BLOCK



weareknitters\_6.jpg



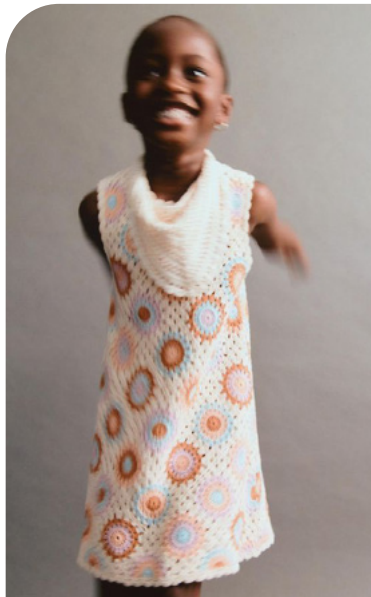
knitplanet\_9.jpg



minidou\_8.jpg



MaisonMangostan\_SS24\_84-1024x1536.jpg



Zara.jpg



Zara 56.jpg



Happywool.webp



riverisland.webp



katia.jpeg



next.webp

EARLY SIGN

## THE KNIT PANTY



@oli.jpg



minimalisma 2.jpg



House of Paloma (2).jpg

STABLE TREND

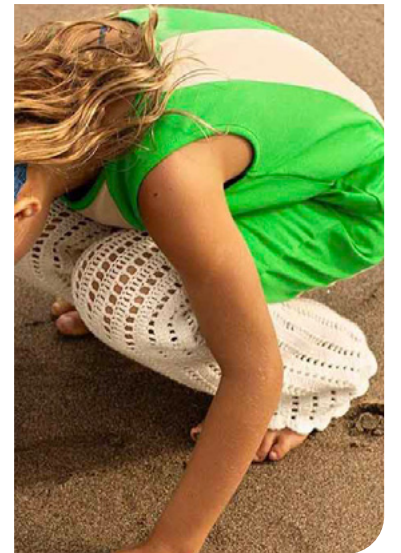
## THE CROCHET PANT



Zara 88.jpg



hooraykids.webp



nikas got soul.jpg

SAFE TREND

THE CROCHET SET



EARLY SIGN

THE ONEZIE



Zara 44.jpg



MARNI.jpg



All Phoenix.jpg



Mini Style.jpg



zara\_21.jpg



Charlies.jpg

SHORT SET

PREPPY OVERALL

# DATA SOURCES & ICONS

## TREND GROWTH



### MARKET

YEAR ON YEAR TREND GROWTH ON E-COMMERCE



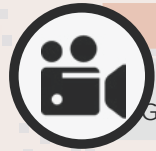
### SOCIAL MEDIA

YEAR ON YEAR TREND GROWTH ON INSTAGRAM



### CONSUMER INTEREST

YEAR ON YEAR GROWTH OF ONLINE SEARCH VOLUMES



### FASHION SHOWS

YEAR ON YEAR TREND GROWTH ON FASHION SHOWS

## TREND BEHAVIOR

### EDGY TREND

weak signal of a potential micro trend with very high risk

### EARLY SIGN

emerging trend with growing perspective but higher risk

### SAFE TREND

announced trend with growing perspective and safe risk

### BIG TREND

trend with a big magnitude due to high commercial potential and quick adaption

### STABLE TREND

trend that is already present in the market with flat growth

### LAST CALL

trend with decreasing perspective but still having business potential

## TREND MAGNITUDE



### MANIFEST

AN ICONIC PRODUCT THAT IS A STABLE TREND OF LARGE MAGNITUDE WITH CONFIRMED COMMERCIAL SUCCESS



### INVEST

A CORE PRODUCT REPRESENTING A STEADILY GROWING TREND OF MODERATE MAGNITUDE WITH COMMERCIAL POTENTIAL



### TEST

A STATEMENT PRODUCT WITH GROWING PERSPECTIVE BUT SMALLER MAGNITUDE AND HIGHER RISK



## DATA TO DRIVE

01 CREATIVITY

02 STRATEGY

03 SUSTAINABILITY



LIVETREND

# THANK YOU!

You may not copy, reproduce, distribute, publish, display, perform, modify, create derivative works, transmit, or in any way exploit any such content, nor may you distribute any part of this content over any network, sell or offer it for sale, or use such content to construct any kind of database. You may not alter or remove any copyright or other notice from copies of the content on any Livetrend report.

**If you have further needs, please contact us via chat.**