



**MENSWEAR
FORECAST**
SPRING/SUMMER
2026
MACROTRENDS



LIVETREND

MACROTRENDS SS26 INTRODUCTION



LIVETREND AI.png



LIVETREND AI.png



LIVETREND AI.png



LIVETREND AI.png



FORECAST

SS26: POWERSHIFTS

As we navigate towards 2026, our global context is still marked by profound challenges that threaten the balance of our societies and our planet. And our daily life becomes increasingly difficult amid environmental degradation, socio-economic instability, and rapid technological changes, embodying a cultural erosion of certainties. In this turbulent landscape, confronting critical issues is becoming not only necessary but essential. In 2026, we are invited to redefine our difficulties as opportunities to push back limits. The SS26 Powershifts encourages a transformative journey towards a more balanced, emotionally enriched, an purpose-driven existence, leveraging discomfort and change to achieve true well-being.

*This forecasting report is based on innovative LIVETREND Data and the expertise of Trend Analysts.
The trends in this report are organized by their magnitude and impact. Find the relating icons & stamps on the last slides.*

TREND MEDITATIVE OUTDOORS



Chiara Zoncad.jpg



@ceciliarenard_1.png



ziyuuwang1.png

Soft Restoration

The SS26 menswear trend, „Meditative Outdoors,“ embodies a vision of harmonious living, merging human progress with a sustainable, nature-focused future. This trend embraces a low-tech, mindful approach, where innovation is guided by nature’s rhythms rather than disrupting them. Rooted in poetic exploration, the aesthetic navigates the balance between modernity and the organic world, valuing outdoor experiences that subtly reconnect individuals with their environment. The protopian aesthetic suggests a soft restoration, evoking the idea of progress as a regenerative force that fosters calm and abundance.

Colors play a key role in this trend, with rejuvenating pastel hues that fluctuate between natural tones and digitally enhanced shades. Elevated color combinations blend stone neutrals, dusty pastels, and bold accents, offering a fresh palette that exudes serenity. Fabrics feature airy transparency, performance-driven nylons, and barely-there floral prints, with soft textures adding layers of comfort.

Details are focused on subtle utility and transformative function, incorporating lightweight zippers, minimal workwear pockets, and soft pullers for ease of use. The looks revolve around airspun layering, capturing a sense of weightlessness and adaptability. Silhouettes like the „utopian gardener,“ „quiet utility,“ and „zen uniforms“ reflect a meditative spirit, offering balance and simplicity for the wearer. Whether it’s the „soft explorer“ look or a „zen uniform,“ this trend fuses functionality with a mindful, techscape-inspired aesthetic, inviting individuals to live with intention and grace in a rapidly evolving world.

[ACCESS ALL IMAGES
CLICKING HERE](#)

MOOD **MEDITATIVE** OUTDOORS



pinterest4.jpg



auralee 5.png



Dior 21.jpg

OUTDOORS **+4100%**

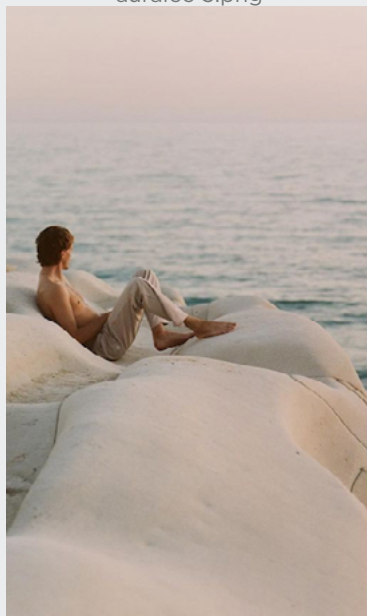
PASTEL LOOK **+80%**



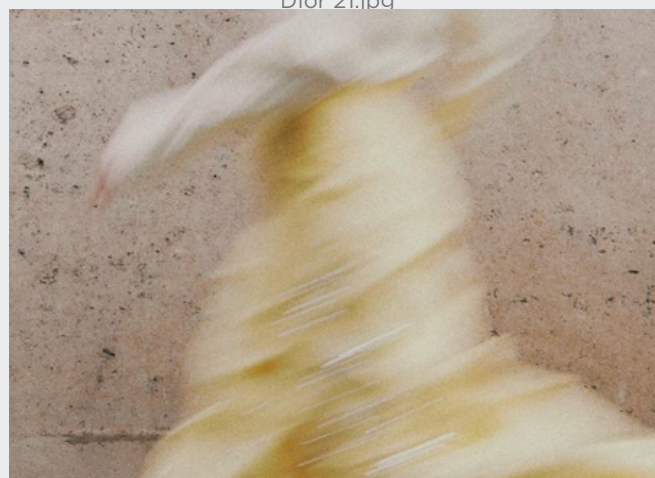
valentinacameranesi2.png



@voostore3.png



@ignant _6.png



choux.ru_9.png



Miyake 12.jpg

RADICAL SIMPLICITY - POETIC EXPLORER - CALL OF NATURE - WEIGHTLESS - TECH-TURE

COLOR PALETTE **MEDITATIVE OUTDOORS**



Dries van Noten 63.jpg



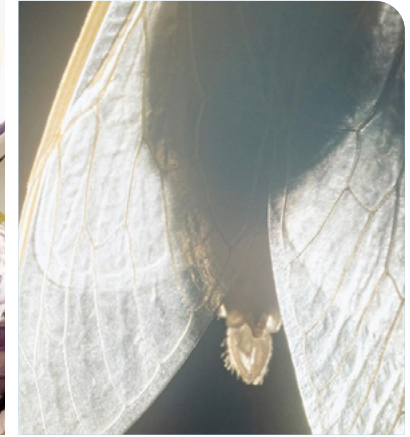
Dries Van Noten



@driesvannoten16.png



@kith 13.png



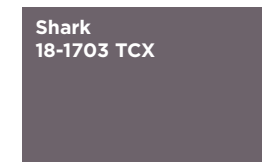
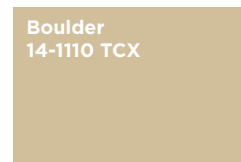
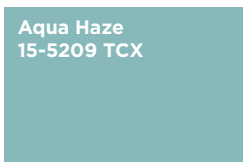
@atmos3.png



designmilk7.png



@view_imagery.PNG



The color palette evokes a tranquil and restorative ambiance, blending soft, nature-inspired hues with subtle enhancements. Aqua Haze emerges as a dusty mint, offering a calm, refreshing backdrop, while Fair Aqua and Fairest Jade provide minty pastel tones that introduce a gentle, airy quality. Charlock, a green-tinted pastel yellow, adds warmth and brightness without overwhelming the senses, creating a harmonious link between earth and light. Neutral tones like Boulder and Cornstalk, reminiscent of dusty stone beiges, ground the palette with an understated, natural elegance. These shades evoke a connection to nature's raw beauty. Violet Ice, a muted mauve, injects a delicate touch of color, while Shark, a violet-tinted dark grey, adds depth and sophistication, offering contrast and refinement. Together, these colors create a serene, contemplative mood, enhancing the sense of balance between modernity and nature in the trend's aesthetic.

COLOR HARMONIES **MEDITATIVE OUTDOORS**

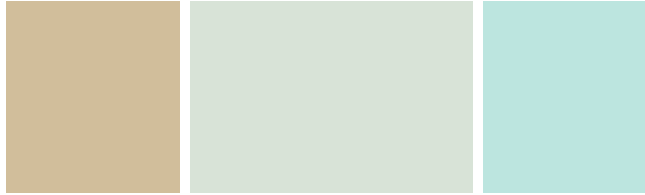


dior 3.jpg

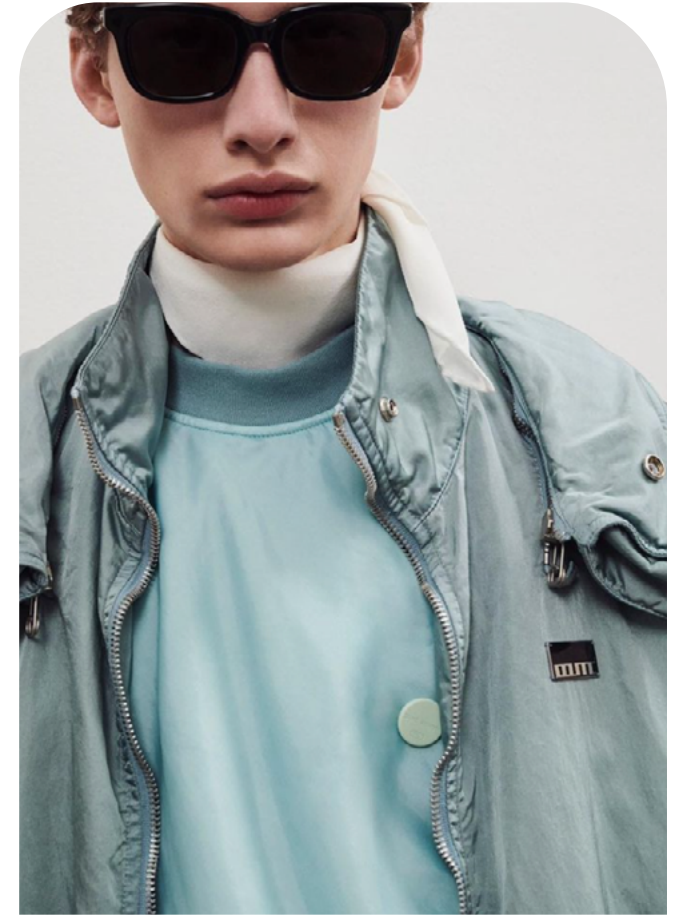


PALETTE 1

PALETTE 2



issey miyake



oamc6.png



PALETTE 3

KEY LOOKS **MEDITATIVE OUTDOORS**



Qasimi 5.jpg

AIRSPUN LAYERS



System 1.jpg

UTOPIAN GARDENER



Fendi 55.jpg

QUIET UTILITY



Burberry 8.jpg

ZEN UNIFORMS



Qasimi 6.jpg

SOFT EXPLORER

KEY LOOKS **MEDITATIVE OUTDOORS**



sunnei 3.jpg

AIRSPUN LAYERS



dior 2 Kopie.jpg

UTOPIAN GARDENER



lacoste 6.jpg

QUIET UTILITY



vuitton5.jpg

ZEN UNIFORMS



Charlie Constantinou15.jpg

SOFT EXPLORER

KEY MATERIALS **MEDITATIVE OUTDOORS**



van noten

AIRY TRANSPARENCY

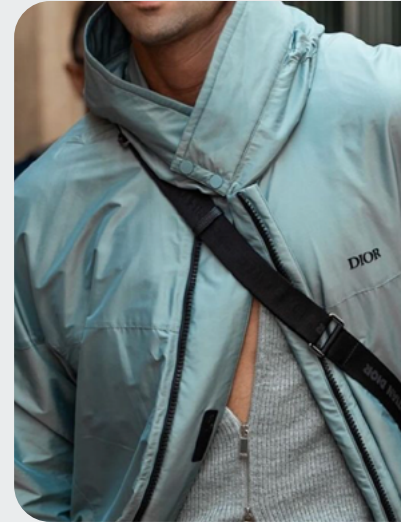


Dries van Noten 63.jpg



hermes.jpg

PERFORMANCE NYLONS



@marcforne 4.png



Neil Barrett 3.jpg

SOFT WRINKLED



Ferragamo 15.jpg



Kolor 20.jpg

BARELY-THERE FLORALS



versace 7.jpg



virgile biosa2.png

KEY ELEMENTS **MEDITATIVE OUTDOORS**

SOFT PULLERS



rocha-clp-s25-002.jpg



@mytheresamen 3.png

MINIMAL WORKWEAR POCKETS



@lookwhatyoumademesee6.png



Kolor 12.jpg

BELLOW POCKETS



Dries van Noten 45.jpg



@driesvannoten6.png

TRANSFORMATIVE ZIPPERS



Feng Chen Wang 22.jpg



Burberry 9.jpg



tods 1.jpg

KEY ACCESSORIES **MEDITATIVE OUTDOORS**



Jil Sander _9.jpg

SOFT HANDBAGS



Feng Chen Wang 29.jpg



Gucci 9.jpg

SOFT LACE-UP SHOE



@marcforne 5.png



AMi Paris22.jpg

OFF-GRID LOAFER



Fendi 2.jpg



JW Anderson 17.jpg

SCRUNCHED BACKPACK



Giorgio Armani 40.jpg



Kenzo -31.jpg

AI INTERPRETATIONS **MEDITATIVE OUTDOORS**



SOFT OUTDOORS



SHEER SPORT



UTOPIAN NOMAD



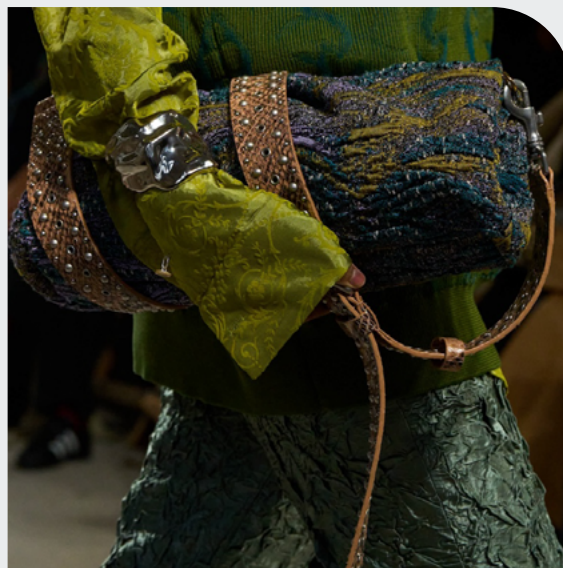
QUIET UTILITY



TREND **PLANTCESTRAL**



@hanakatoba.jpeg



van-noten-clp-s25-090.jpg



@arianna.lago 3.png

Mystical Tech-scapism

The SS26 trend, „Plantcestral,“ embodies a harmonious fusion of nature and technology, forging a deep reconnection to the natural world through mystical, futuristic lenses. At its heart, this trend honors elemental forces—botanic, wind, and sea—while reimagining the biosphere as a symbiotic relationship between humans and nature. By blending the organic with the virtual, „Plantcestral“ redefines biomimicry, using nature’s design principles to inspire conscious and sustainable innovation.

The aesthetic of this trend is a dynamic interplay between the real and virtual, capturing the fluidity and unpredictability of nature. It draws inspiration from fairy core’s mythical undertones, creating a whimsical, ethereal sensibility.

Colors like neo olives, mystical jewel tones, and swampy, fermented shades invoke an earthy yet otherworldly palette, elevating the designs with a nymph-like mystique. These darker, mythical hues are paired with faded mid-tones for an enchanted, natural vibe.

Material choices further enhance the narrative. Sleek leathers, camouflaging biomimicry, nightshade floral prints, and faded stains create a rugged yet elegant texture.

Details like botanical 3D elements, draped asymmetries, mythic hoods, and rugged hems add to the trend’s layered complexity, infusing it with a raw, untamed energy. Key looks such as cyber garden, goblin core, and urban camouflage reflect this juxtaposition of nature and tech, offering an otherworldly yet wearable aesthetic. „Plantcestral“ invites a transformative reconnection with the natural world, guided by both ancestral wisdom and futuristic innovation.

**ACCESS ALL IMAGES
CLICKING HERE**

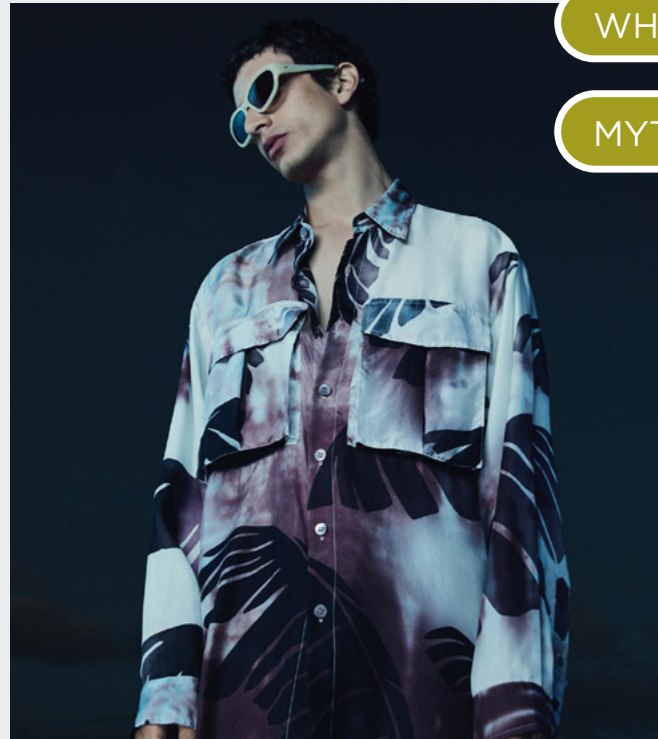
MOOD PLANTCESTRAL



Wales Bonner 7.jpg



gcds



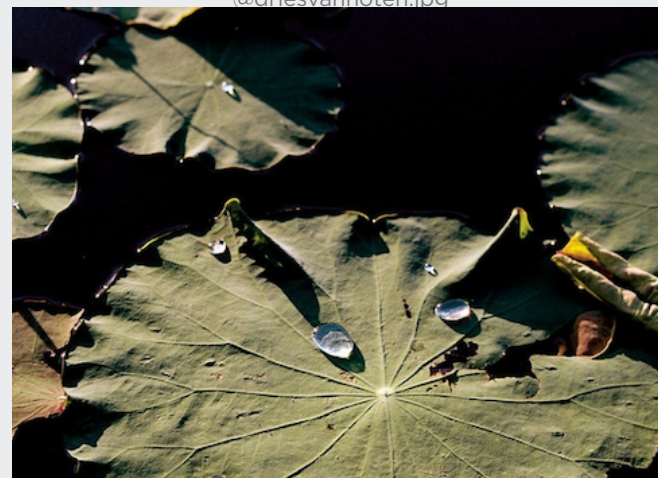
@driesvannoten.jpg



@atmos2.png



@chengwei.jpg



@atmos1.png



@ignant_5.png



Dries van Noten 33.jpg

WHIMSIGOTH +250%

MYTHICAL NYMPH +2000%

NATURE REIMAGINED - SYMBIOSIS - GRUNGE NOUVEAU - MYSTICAL TECH - CHANGE OF STATE

COLOR PALETTE **PLANTCESTRAL**



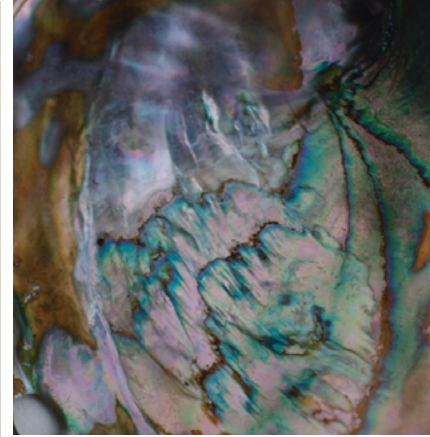
@panconesi2.png



Dries Van Noten



Charlie Constantinou13.jpg



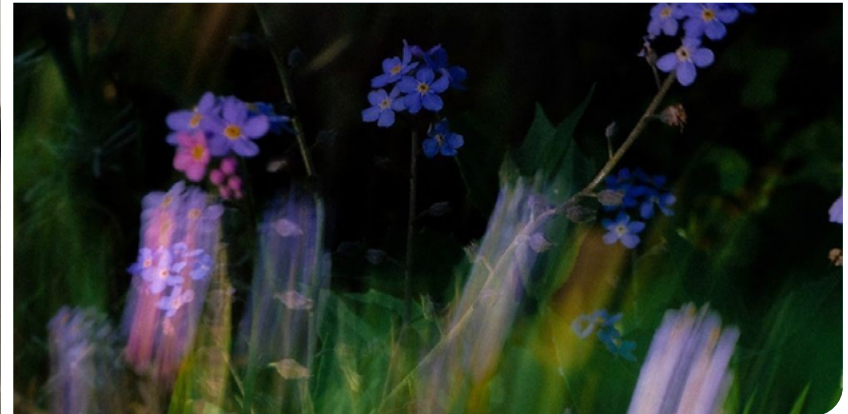
max_attila_bartsch2.png



Burberry 14.jpg



nephentes.jpeg



@nowness.jpg

Raisin
19-1606 TCX

Celosia Orange
17-1360 TCX

Green Moss
17-0636 TCX

Sea Turtle
19-0403TCX

Pear Liqueur
12-0542 TCX

Lime Cream
12-0312 TCX

Shaded Spruce
19-4524 TCX

Purple Coralites
18-33839 TCX

The Plantcestral Tech-scapism color palette brings a harmonious blend of nature's ruggedness and mystical allure. Earthy tones like Raisin, Green Moss, and Sea Turtle create a grounded, swamp-like essence, invoking the wild, untamed beauty of forests and wetlands. These muted browns and khakis evoke a sense of calm and raw authenticity. In contrast, vibrant accents like Pear Liqueur lime and Celosian Orange add a zesty, energetic burst, reminiscent of nature's boldest elements—lush foliage and radiant sunsets. Soft pastels like Lime Cream provide a refreshing, airy lightness, balancing the darker shades. The jewel tones of Shaded Spruce and Purple Coralites add a mystical, nocturnal vibe, infusing the palette with depth and elegance. This combination of earthy and magical hues creates a rich, transformative effect, evoking the fluid interaction between the organic world and a tech-enhanced reality, resulting in a futuristic yet nature-connected aesthetic.

COLOR HARMONIES **PLANTCESTRAL**



Wales Bonner 30.jpg

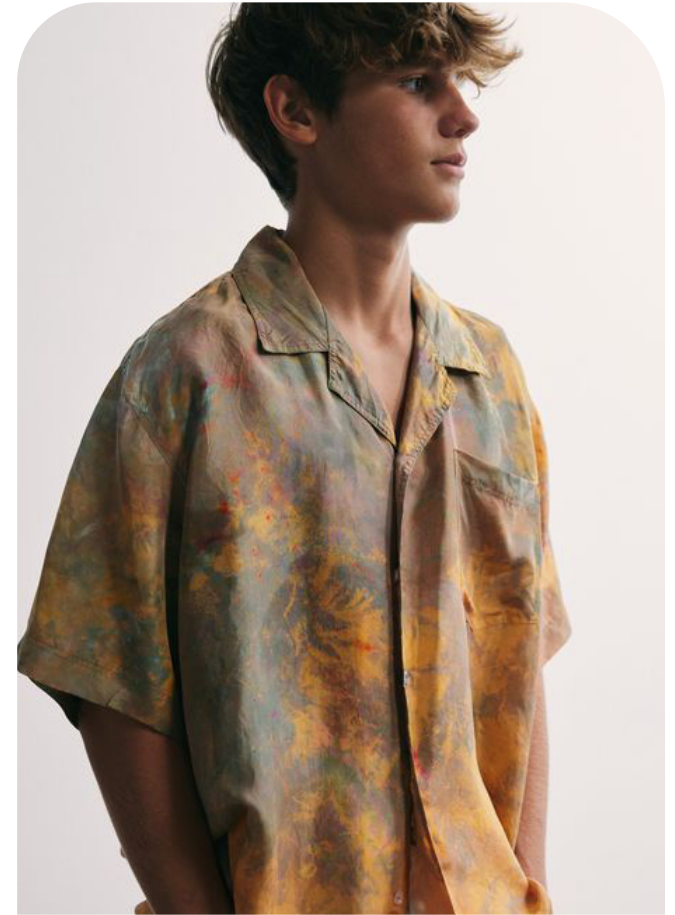


PALETTE 1

PALETTE 2



Charlie Constantinou13.jpg



riverside.jpeg



PALETTE 3

KEY LOOKS **PLANTCESTRAL**



walesbonner4.jpg

CYBER GARDEN



diesel 5.jpg

TEXTURED NATURE



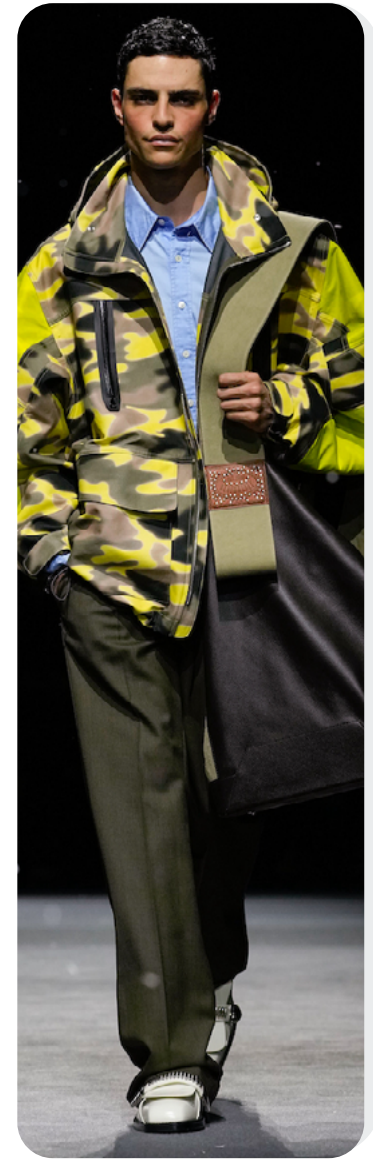
gucci8.jpg

MYSTICAL SLEEK



paola carzana_5.jpg

GOBLINCORE



bluemarble1.jpg

URBAN CAMO

KEY LOOKS **PLANTCESTRAL**



Dhruv Kapoor 2.jpg

CYBER GARDEN



offwhite3.jpg

TEXTURED NATURE



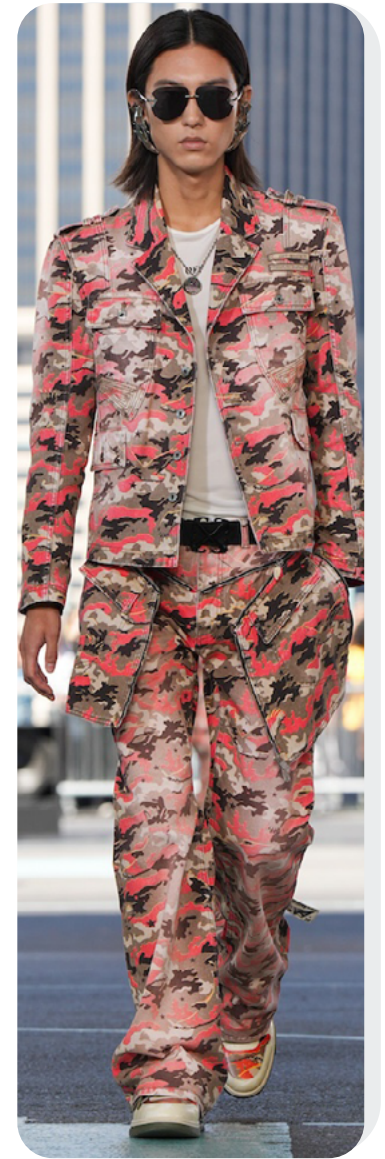
Dries van Noten 3.jpg

MYSTICAL SLEEK



collina strada 2.jpg

GOBLINCORE



offwhite7.jpg

URBAN CAMO

KEY MATERIALS **PLANTCESTRAL**

OFF-GRID FADES



baumeister-clp-s25-029.jpg



Dries van Noten 52.jpg

SLEEK LEATHERS



Hed Mayner 26.jpg



Auralee 13.jpg

CAMOUFLAGING BIOMIMICRY



kenzo2.jpg



Burberry 5.jpg

VIRTUAL BLOOM



Dhruv Kapoor 35.jpg



@driesvannoten.jpg



diesel 11.jpg

KEY ELEMENTS **PLANTCESTRAL**



masha popova-7.jpg

3D GARDEN ELEMENTS



dazedmag 5.png

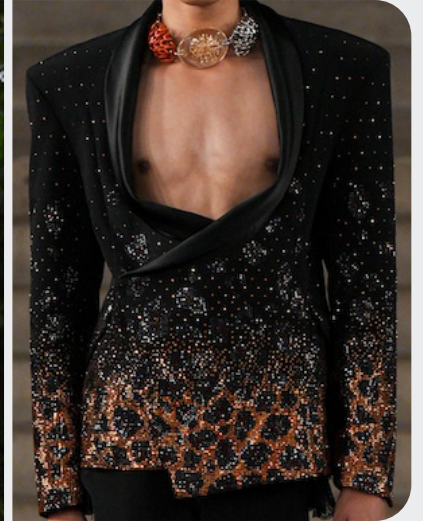


Kenzo -16.jpg

DRAPED ASYMMETRY



paola carzana_6.jpg



palomo spain 7.jpg

MYSTICAL HOODS



Bluemarble 19.jpg



Kenzo5.jpg

RUGGED HEMS



diesel 5.jpg



EgonLab 24.jpg

KEY ACCESSORIES **PLANTCESTRAL**



Giorgio Armani 55.jpg

MULTIBAGS



Dhruv Kapoor 43.jpg



Gucci 13.jpg

CREATIVE CAMO SNEAKERS



popova-049.jpg



dazedmag 9.png

COMBAT STYLES



Emporio Armani29.jpg



JW Anderson 14.jpg

WEARABLE MINI BAGS



Giorgio Armani 34.jpg



Dhruv Kapoor 41.jpg

AI INTERPRETATIONS **PLANTCESTRAL**



OUTDOOR SLEAZE



VIRTUAL SAFARI



NATURAL GRUNGE



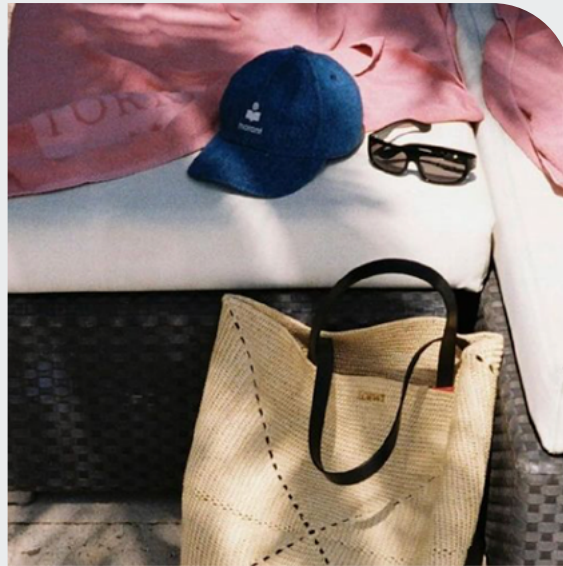
NEO GARDEN



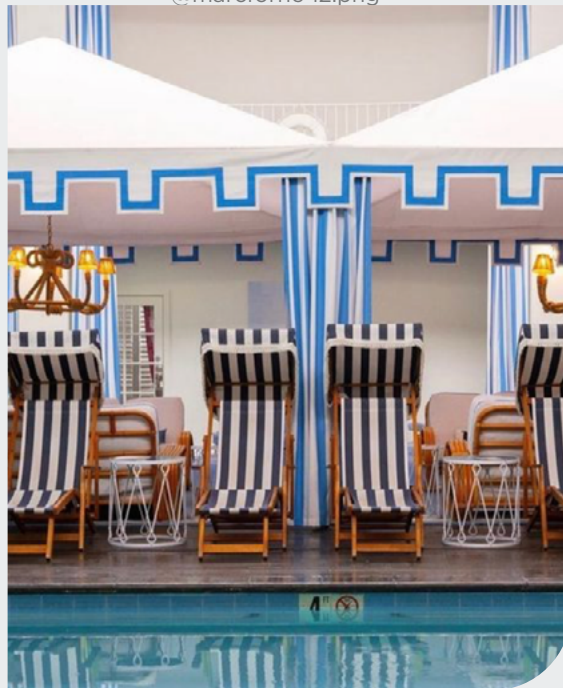
TREND **RETRO SURREALISM**



gucci9.jpg



@marcforne 12.png



rowenrose9.png

Immersive Holiday Memories

The SS26 trend, Retro Surrealism, embraces the beauty of idleness, positioning it as a path to creativity rather than an obstacle to productivity. Rejecting the pressure of constant performance, this trend celebrates stillness, allowing inspiration to emerge organically. It evokes anemoia, a nostalgic longing for a past never experienced, blending the luxurious, understated retro vibes of the 1950s and '60s with elements of surrealism, crafting a dreamlike atmosphere where time feels suspended. This aesthetic is reminiscent of vintage seaside resorts, conjuring postcard-perfect scenes of laid-back summers where the mind can wander freely and creativity thrives.

Color palettes for SS26 offer a fusion of dreamy pastels with bold, juicy tones, creating fresh, invigorating combinations. Maritime blues provide a timeless touch, grounding the palette in a nostalgic nod to the oceanic spirit. Materials evoke a vintage holiday mood, with satin scarves, optical motifs, and dandy stripes adding flair and texture. Classic maritime stripes are reimagined, while dandy knits bring sophistication to the trend's laid-back appeal.

Details such as retro polo features, modern sailor collars, resort club piping, and decorative military buttons enhance the playful yet refined look. Key styles within this trend include iconic sailor outfits, casual beach boy ensembles, quirky retro combinations, and minimal prep looks. Retro Surrealism merges formality and whimsy, inviting wearers to explore a whimsical, serene past where imagination reigns supreme, creating a nostalgic yet forward-thinking summer aesthetic.

**ACCESS ALL IMAGES
CLICKING HERE**

MOOD **RETRO SURREALISM**



dazedmag 1.png



@visualsbypreet.jpg



paris streetstyle



@afilmcosmos.png



milano streetstyle



Gucci 31.jpg



@bisquebistro.jpg



@fernandomerinoumodels.png

SURREALISM +54%

OLD MONEY +200%

TIME SUSPENDED - QUAINOT RESORT - FUN NAIVITY - TIMELESS - WIDE-EYED - BOLD PREP

COLOR PALETTE **RETRO SURREALISM**



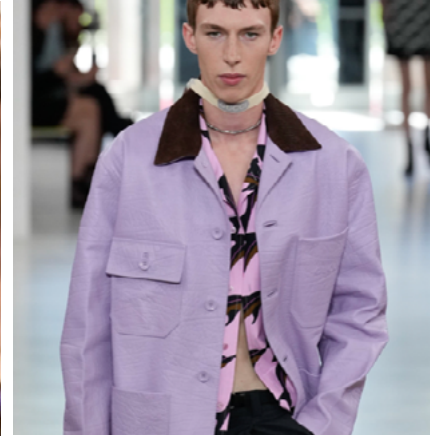
Prada 60.jpg



Dries Van Noten



versace



Gucci 50.png



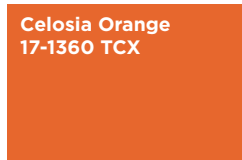
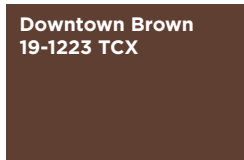
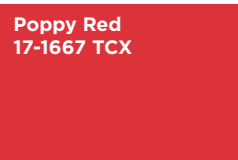
wconcept1.png



@miumiu 7.png



@admagazine4.png

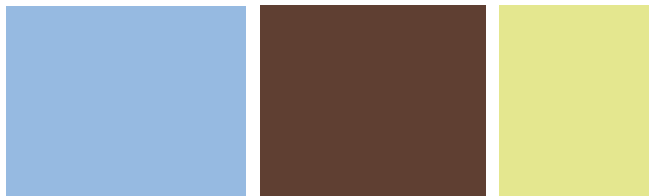


The color palette of Retro Surrealism evokes both nostalgia and dreamlike whimsy, blending bold and soft tones for a unique, imaginative effect. Vibrant shades like Poppy Red and Celosia Orange bring a playful energy to the mix, infusing the trend with a lively, almost surreal feel. These bold hues are balanced by the warmth of Downtown Brown, a retro shade that adds depth and a vintage charm. Dreamy pastels such as Charlock and Lavender Blue introduce a delicate softness, while Dutch Canal lends an ethereal, sun-faded touch. These lighter tones create a feeling of suspended time, enhancing the trend's nostalgic essence. Ocean-inspired shades like Malibu Blue and Deep Ultramarine complete the palette, grounding the aesthetic with a serene, timeless maritime influence. Together, these colors evoke a playful yet calming mood, offering a perfect balance between energetic creativity and peaceful, retro-inspired daydreams.

COLOR HARMONIES **RETRO SURREALISM**



versace 26.jpg



PALETTE 1



PALETTE 2



Gucci 31.jpg



versace-bks-s25-069.jpg



PALETTE 3

KEY LOOKS **RETRO SURREALISM**



System 5.jpg

ICONIC SAILOR



Wales Bonner 3.jpg

BEACH BOYS



federico cina 4.jpg

DANDY DAYS



versace 24.jpg

QUIRKY RETRO



prada5.jpg

MINIMAL PREP

KEY LOOKS **RETRO SURREALISM**



D&G

ICONIC SAILOR



Antonio Marras 13.jpg

BEACH BOYS



Drole de Monsieur 8.png

DANDY DAYS



lacoste 9.jpg

QUIRKY RETRO



prada1.jpg

MINIMAL PREP

KEY MATERIALS **RETRO SURREALISM**



Charles Jeffrey Loverboy 11.jpg

HOLIDAY SATINS



@kith 11.png



versace-bks-s25-115.jpg

OPTICAL PRINTS



Gucci 40.jpg



versace-bks-s25-102.jpg

ELEGANT FINE KNITS



Prada 56.jpg



Loewe 2.png

RETRO STRIPES



Gucci 37.jpg



@scottfrasercollection.jpg

KEY ELEMENTS **RETRO SURREALISM**



versace 23.jpg

RETRO POLO COLLARS



@mytheresamen 9.png



DDM.webp

FANCY MILITARY BUTTONS



@mytheresamen 4.png



palomo spain 2.jpg

CLUB-LIKE PIPING

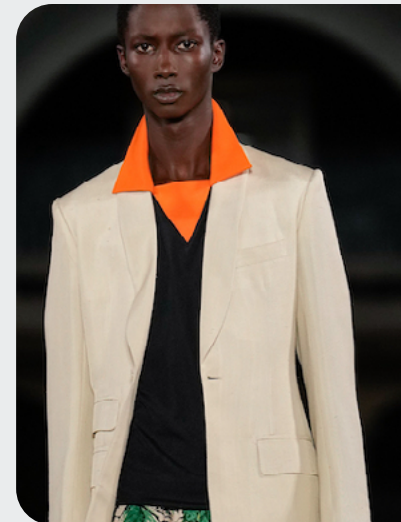


paris-m-str-s25-0495.jpg



@charlinelumiere_8.png

MODERN SAILOR COLLARS



Wales Bonner 3.jpg



prada5.jpg

KEY ACCESSORIES **RETRO SURREALISM**



d&g

SAILOR HATS



@nonamesc1.png



aimeleondore8.jpg

CHIC WEEKENDER



Hermes 41.jpg



dior-m-clp-s25-065-552x828.jpg

BOAT SHOES



MSGM 23.jpg



Loewe 15.jpg

NECKERCHIEFS



Dolce & Gabbana38.jpg



MSGM 14.jpg

AI INTERPRETATIONS **RETRO SURREALISM**



BOLD PREP



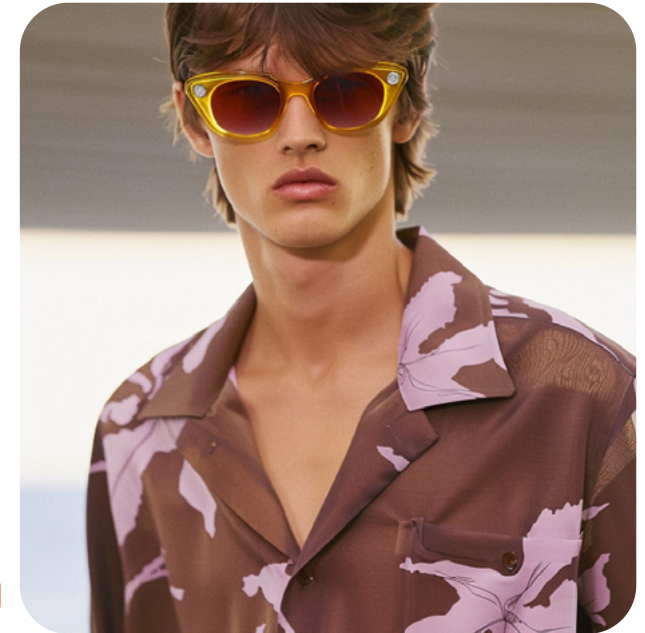
QUIRKY BEACH



URBAN SAILOR



HYBRID RESORT



TREND **BLUE SUMMER**



urban outfitters32.webp



camille-brodard-uFVPf9zh17U-unsplash.jpg



@aitorlaspiur3.png

Homespun Countryside

The SS26 trend, „Blue Summer,“ channels a wistful nostalgia for simpler, rural living, offering a serene escape from the hectic pace of modern life. It captures the essence of lazy summer afternoons spent under the shade of a grand old oak tree, where time feels slower and life more grounded. With a deep sense of homesickness for the tranquility of past summers, this trend evokes memories of warm family traditions, carefree moments, and the peaceful hum of nature. The atmosphere is filled with the scent of fresh linen drying in the breeze, the sound of cicadas buzzing softly, and the tender daydreams of childhood, creating a soothing yet melancholic summer reverie.

The color palette embraces light and easy summer hues—gentle rose, blues, and greens—infused with a soft, naive feel. Materials feature a homespun charm, with patterns like delicate florals, waxed gardening fabrics, picnic plaids, and bucolic paintings, all reinforcing the nostalgic undertones. Key details include quaint homespun embroideries, ivy-league badges, and cabin-inspired finishes that ground the aesthetic in tradition.

The overall looks reflect a harmonious blend of styles: blue-collar workwear, garden picnic ensembles, grandpa’s closet staples, and tender prep pieces. Intimate basics form the foundation of this wardrobe, with each outfit telling a story of quiet comfort and connection to the past. In SS26, „Blue Summer“ invites a return to innocence and simplicity, evoking a longing for the tranquil beauty of bygone summer days.

**ACCESS ALL IMAGES
CLICKING HERE**

MOOD **BLUE** SUMMER



@andreafaceccio 8.png



Dior 43.jpg



fendi10.png



cabana magazine_5.png



foret.jpg.avif



@hannahschonberg4.png



@spotlighttime.jpg

NOSTALGIA **+600%**

FARMER **+1150%**



dazedmag 20.png

SUMMERTIME SADNESS - MELANCHOLIA - HUMBLE NOSTALGIA - HOMESPUN - COUNTRYSIDE

COLOR PALETTE **BLUE SUMMER**



@serpentil.png



Dries Van Noten



fendi11.png



@kith 3.png



@charlinelumiere_3.png



Namesake 20.jpg



sarahespeute2.png

Peachy Keen
19-2045 TCX

Shell Pink
16-1632 TCX

Primrose Yellow
13-0755 TCX

Boulder
14-1110 TCX

Skyride
14-4215 TCX

Deep Ultramarine
19-3950 TCX

Fair Aqua
12-5409 TCX

Green Moss
17-0636 TCX

The „Blue Summer“ color palette creates a nostalgic, tranquil atmosphere through a blend of soft and retro hues. Shell Pink and Peachy Keen bring a gentle warmth with their dusty rose tones, evoking a sense of faded memories and vintage charm. Primrose Yellow and Deep Ultramarine add classic retro accents, reminiscent of old family photos and sun-faded summer garments. These colors carry a comforting familiarity, grounding the palette in the past. Boulder, a timeless beige, offers a neutral foundation, providing stability and an earthy connection to nature, while Green Moss (cabin khaki) adds a rustic, outdoorsy feel, reminiscent of quiet forest retreats. Skyride and Fair Aqua, dreamy pastel shades, evoke the serene, endless skies and shimmering lakes of summer days, filling the palette with an ethereal lightness. Together, these colors capture a soothing, nostalgic essence, transporting the wearer to a simpler, more peaceful time.

COLOR HARMONIES **BLUE SUMMER**



pitti uomo

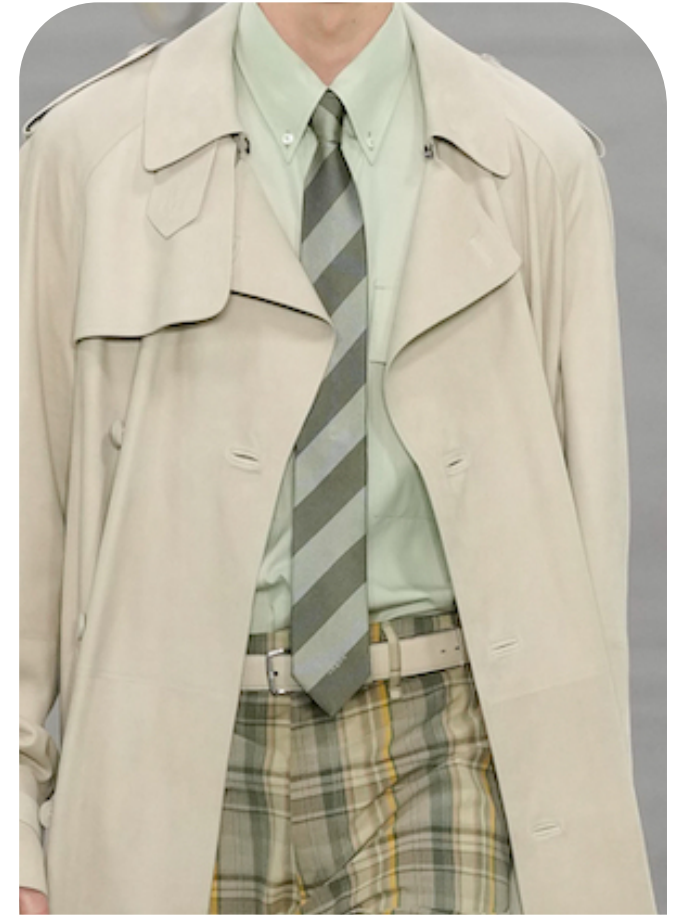


PALETTE 1

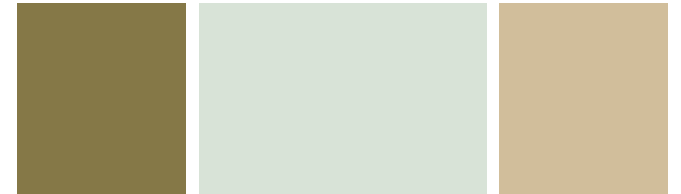
PALETTE 2



Fendi 32.jpg



fendi10.jpg



PALETTE 3

KEY LOOKS **BLUE SUMMER**



versace 21.jpg

BLUE COLLAR



Bottega Veneta 16.jpg

GARDEN PICNIC



drole de monsieur

GRANDPA'S CLOSET



fendi

INTIMATE BASICS



Auralee.jpg

TENDER PREP

KEY LOOKS **BLUE SUMMER**



pitti streetstyle

BLUE COLLAR



Moschino 5.jpg

GARDEN PICNIC



walesbonner3.jpg

GRANDPA'S CLOSET



fiorucci 3.jpg

INTIMATE BASICS



Fendi 57.jpg

TENDER PREP

KEY MATERIALS **BLUE SUMMER**

NAIVE FLOWERS



Hermes 19.jpg



Dior 20.jpg

WAXED GARDENING



barbour4.png



time-070.jpg

PICNIC PLAIDS



Hermes 46.jpg



paris streetstyles

BUCOLIC PAINTINGS



Bianca Saunders 23.jpg



paris streetstyle



drole de monsieur

KEY ELEMENTS **BLUE SUMMER**

CABIN DETAILS



AMi Paris17.jpg



fendi14.png

HOMESPUN MOTIFS



Dior 86.jpg



Aknvas.jpg

PRIM BUTTON-UPS



@lookwhatyoumademese7.png



drole de monsieur

IVY-LEAGUE LOGOS



fendi12.png



magliano.jpg



hedmayner.JPG

KEY ACCESSORIES **BLUE SUMMER**



fiorucci 7.jpg

ROMANTIC MARY-JANES



Vuitton 12.png



@droledemonsieur_1.png

HEADSCARF FEATURES



fendi13.png



guang yu tim 2.jpg

GLOVE-LIKE LEATHER SHOES



Y3 10.jpg



System 3.jpg

SOFTBOY FLAT CAPS



Wales Bonner 21.jpg



drole de monsieur"

AI INTERPRETATIONS **BLUE SUMMER**



SOFT DANDY



CHIC GARDENER



DREAMY PREP



ELEVATED BASICS



TREND **SLOW CRAFT**



@mytheresamen 14.png



Cara Marie Piazza2.png



cabana magazine_7.png

Profound Heritage

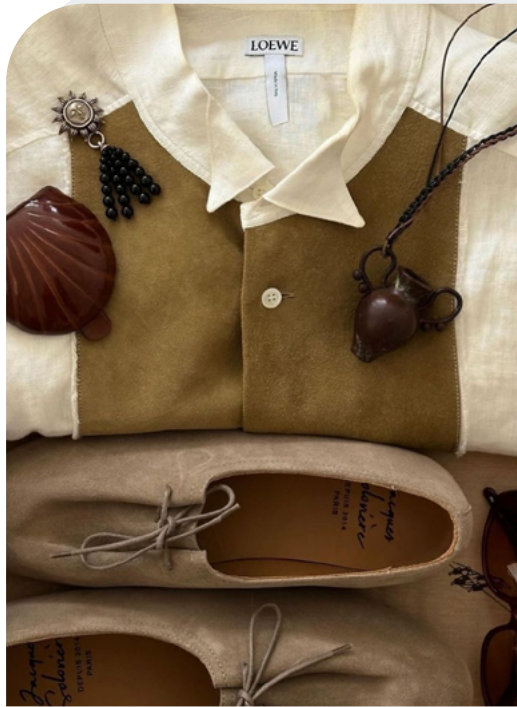
The SS26 trend, Slow Craft, heralds a significant shift towards a celebration of heritage and the beauty of handmade craftsmanship. This movement embodies a rediscovery of human creativity, where the calming practice of meditative artistry is not just valued but cherished. Slow Craft melds raw power with spiritual renewal, harmonizing the unrefined with the polished to create a modern boho aesthetic that feels both grounded and ethereal. Each piece in this trend carries profound meaning, reflecting a deep sense of purpose that connects us to a more thoughtful way of living.

Central to this trend is the influence of neo-spiritualism, which bridges tradition and modernity. It celebrates authenticity and encourages a richer, more meaningful engagement with our surroundings. The color palette features earthy tones, including neutral clay, rusty browns, dazed blue, and fermented yellows, evoking the warmth of nature. Materials like natural linen, handcrafted nets, dry suede, and spiritual symbolism further enhance this aesthetic, embodying a tactile and sensory experience.

Key design details include beads and trims, monastic necklines, kaftan-like openings, and artisanal embroideries, all of which contribute to the layered textures and visual narratives. The overall look encompasses various styles, such as raw tailoring, soft muse, new tribe, minimal monastic, and artisanal craft. Together, these elements create a fashion statement that invites introspection and fosters a deep connection to the art of crafting, encouraging wearers to embrace a slower, more intentional way of life.

**ACCESS ALL IMAGES
CLICKING HERE**

MOOD SLOW CRAFT



@attiresaint 7.png



@sightunseen 1.png



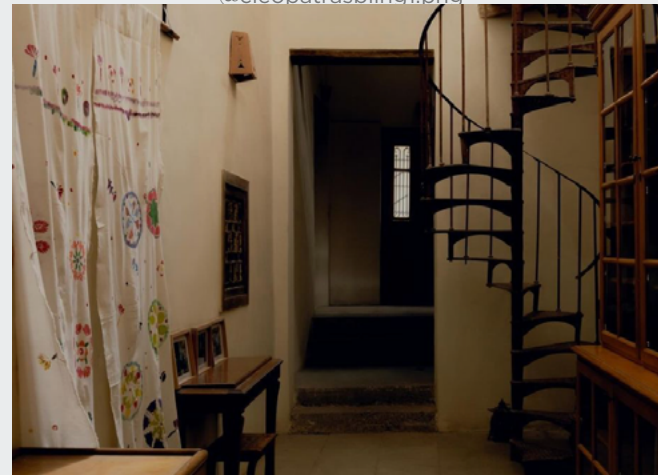
@cleopatrasblinq1.png



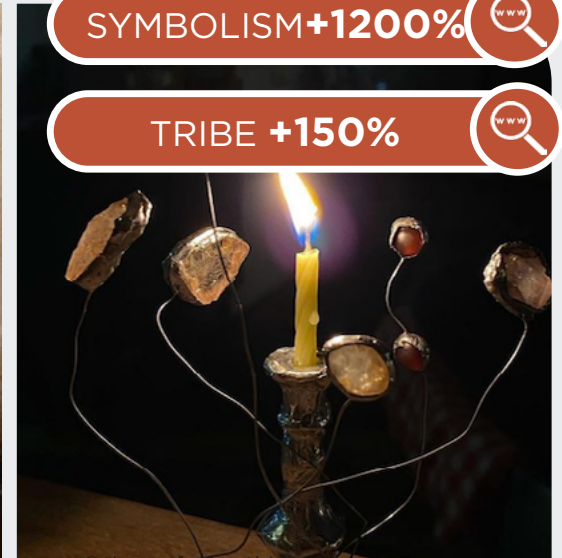
Namesake 16.jpg



@commas1.png



@kinfolk1.png



SYMBOLISM+1200%

TRIBE +150%

@thepperfectnothingcatalog -3.png



@commas-12.png

NEO-PRIMAL - SACRED TREASURES - TRUTH SEEKER - SPIRITUAL ARTISAN - ANCIENT FLOW

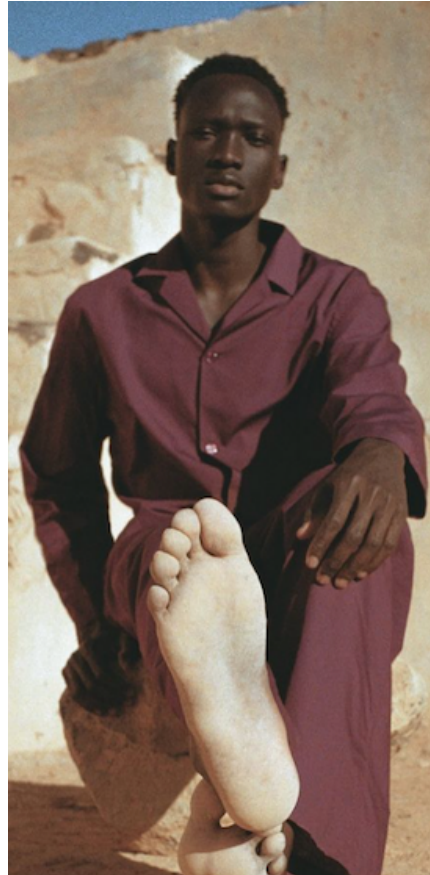
COLOR PALETTE SLOW CRAFT



@ignant_19.png



Dries Van Noten



@vespervoyage_1.png



@kith 19.png



Clue Perfumery.jpg



@ombredansleau1.png



@paulinoechardin24.png

Aqua Haze
15-5209 TCX

Oak Buff
16-1144 TCX

Rattan
14-1031 TCX

Downtown Brown
19-1223 TCX

Pomegranate
19-1930 TCX

Arabian Spice
19-1245 TCX

Burnt Ochre
18-1354 TCX

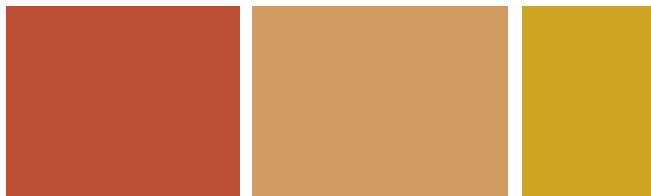
Lemon Curry
15-0751 TCX

The Slow Craft color palette exudes a calming yet rich aura, reflecting the movement's essence of heritage and handmade artistry. Aqua Haze introduces a dazed aqua tone that evokes serenity, encouraging mindfulness and introspection. Complementing this is Oak Buff and Rattan, which provide warm beige shades that create a cozy and inviting atmosphere. Downtown Brown offers a grounding presence with its wooden holy brown hue, while Pomegranate infuses depth through its rich burgundy, symbolizing creativity and passion. The rusty tints of Arabian Spice and Burnt Ochre add warmth and a sense of earthiness, reminiscent of natural materials. Lastly, Lemon Curry, with its fermented yellow, introduces a playful brightness, evoking the joy found in crafted simplicity. Together, these colors foster a tranquil yet vibrant environment, encouraging a deeper connection to nature and self, perfectly aligning with the Slow Craft ethos of thoughtful living and creative expression.

COLOR HARMONIES **SLOW CRAFT**



@kith 20.png



PALETTE 1

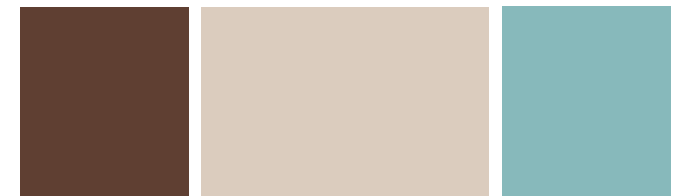
PALETTE 2



@bode 3.png



@commas2.png



PALETTE 3

KEY LOOKS **SLOW CRAFT**



kenzo 2.jpg

RAW TAILORING



todd snyder

MALE MUSE



@songforthemute.jpg

NEW TRIBE



tibi 6.jpg

MINIMAL MONASTIC



Dolce & Gabbana8.jpg

ARTISANAL CRAFT

KEY LOOKS **SLOW CRAFT**



Feng Chen Wang 53.jpg

RAW TAILORING



armani10.jpg

MALE MUSE



valentino

NEW TRIBE



Sean Suen 1.jpg

MINIMAL MONASTIC



Wooyoungmi_7.jpg

ARTISANAL CRAFT

KEY MATERIALS **SLOW CRAFT**

LIGHT LINENS



Dior 58.jpg



Ziggy Chen 9.jpg

HANDCRAFTED NETS



Dolce & Gabbana30.jpg



Hsiao Chen Wang 2024 Spring & Summer Collection

SPIRITUAL SYMBOLISM



nanushka 10.jpg



@yuthanan.jpg

DRY SUEDES



Fendi 16.jpg



Feng Chen Wang 7.jpg



emporio armani.jpg

KEY ELEMENTS **SLOW CRAFT**

BEADS & TRIMS



@commas1.png



Bed Jw Ford 6.jpg

CEREMONIAL NECKLINES



@mytheresamen 16.png



paris-m-str-s25-1526.jpg

CRAFTY STITCHING



urban outfitters33.webp



@nakd 32.png

KAFTAN OPENINGS



@kith 16.png



armani15.jpg



lacoste 1.jpg

KEY ACCESSORIES **SLOW CRAFT**



Zegna 3.jpg

NATURAL HOBO



Zegna 27.jpg



Emporio Armani37.jpg

TALISMAN HANDBAG



paris-m-str-s25-0402.jpg



Feng Chen Wang 31.jpg

BRAIDED SANDALS



Wales Bonner 54.jpg



Hermes 49.jpg

RAFFIA DERBY



Dior 84.jpg



Dolce & Gabbana9.jpg

AI INTERPRETATIONS **SLOW CRAFT**



CHIC BOHO



NATURAL TAILORED



TRUTH SEEKER



RUSTIC & RAW



TREND MOONBATH



fendi3.png



@paulinoechardin2.png



alemais14.png

Glooming Tropics

The Moonbath trend for SS26 redefines fulfillment by celebrating micro-joys and reclaiming happiness found in everyday moments. It invites individuals to sunbathe at night, offering a refreshing escape from the heat of the day and encouraging exploration in a sunless world. This trend immerses us in a dark, tropical imaginary that is both earthy and sensual, drawing inspiration from the allure of summer spices and a psycho-spiritual essence that resonates with truth seekers.

The aesthetic captures the mystery of night, blending introspection with a primal desire to connect deeply with oneself and the natural world. The color palette is rich and varied, featuring nocturnal jewel tones, aquatic shades, and zesty lime, creating a vibrant yet moody atmosphere. Materials play a significant role in this trend, showcasing blurred stripes and nets that evoke a sense of fluidity, alongside solar elements that hint at the warmth of summer even in darkness.

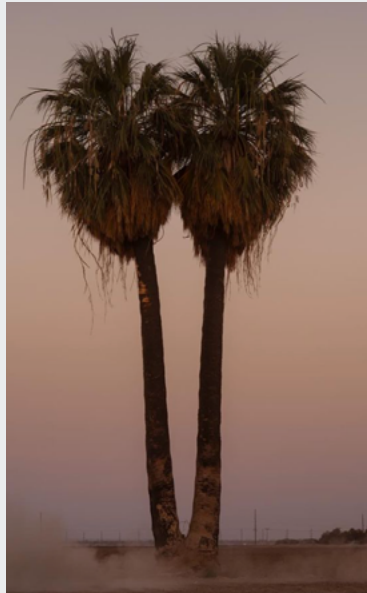
Key details include baggy low-rise silhouettes, holiday polos adorned with sparkling embellishments, and bohemian craft accents that enhance the laid-back vibe. The looks embody a fusion of moon bathing, psychedelic chic, cyber hippie, tropic holiday, and island rave aesthetics, reflecting a diverse yet harmonious style. In this celebration of night, the Moonbath trend offers an enchanting invitation to indulge in life's simple pleasures and forge connections that transcend the ordinary.

[ACCESS ALL IMAGES
CLICKING HERE](#)

MOOD MOONBATH



kultaustralia6.png



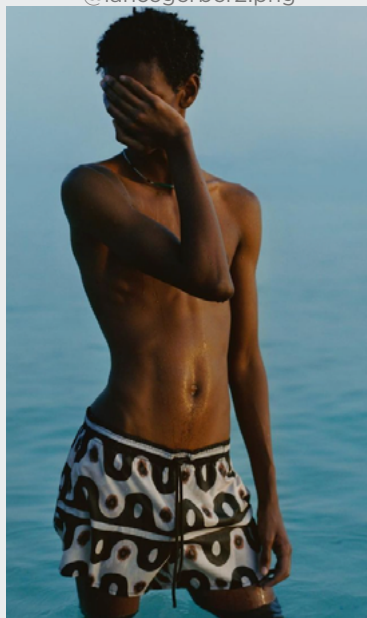
@lancegerber2.png



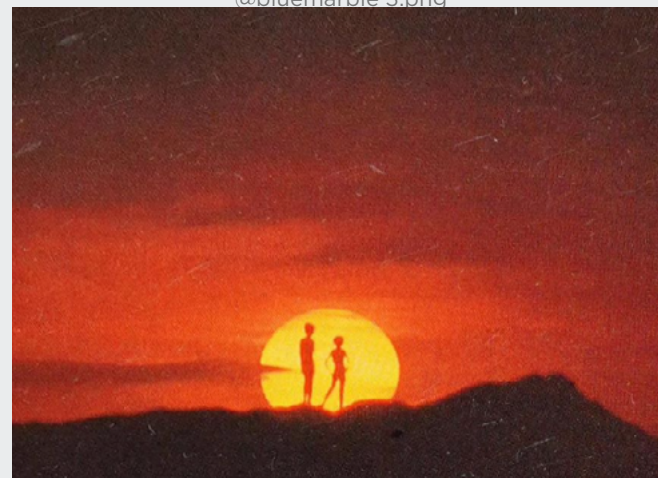
@bluemarble 3.png



@kith1.png



@commas10.png



@acidmemories.png



@linda.sza 20.png

BOHO +1200%

TROPISM+400%



@commas12.png

PSYCHO-SPITIRTUAL - SEDUCTIVE TROPICS - NIGHT VISION - CIRCADIAN SHIFT - SUMMER SPICE

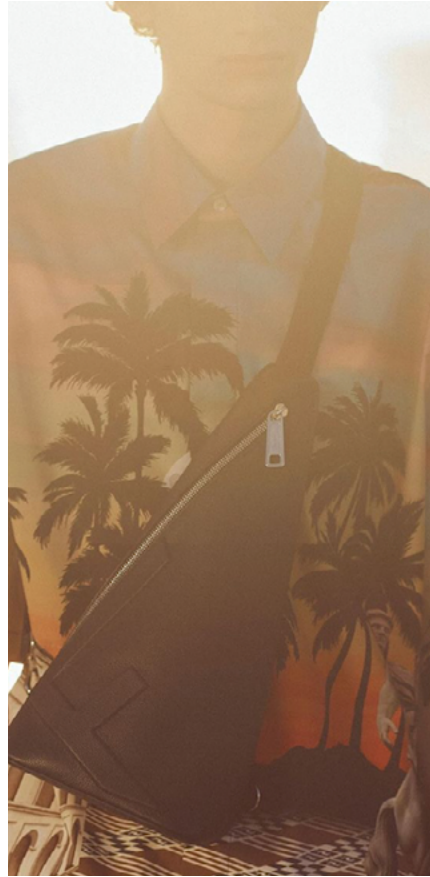
COLOR PALETTE MOONBATH



sheena.miyake_24.png



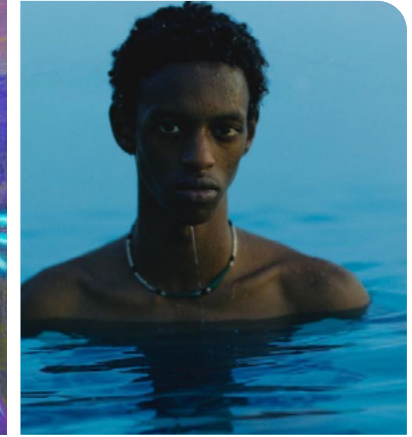
Dries Van Noten



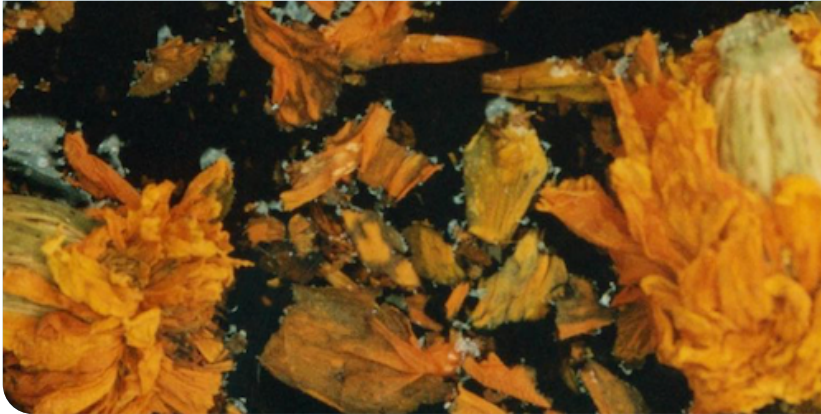
fendi5.png



@garymacmillanart.jpg



@commas9.png



@arianna.lago 4.png



@johannbesse_6.png

Kiwi Colada
14-0443 TCX

Golden Rod
14-0951 TCX

Celosia Orange
17-1360 TCX

Catawba Grape
19-1621 TCX

Crushed Grape
18-3522 TCX

Purple Corallites
18-33839 TCX

Shaded Spruce
19-4524 TCX

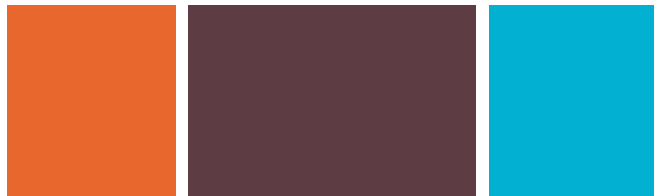
Blue Atoll
16-4535 TCX

evoke a sense of joy and exploration. Zesty Kiwi Colada, a lively lime, energizes the senses, while Golden Rod and Celosia Orange provide warming hues that evoke the warmth of summer evenings. The introduction of Catawba Grape adds a rich, dark tone, creating depth and intrigue. Crushed Grape and Purple Corallites present a spectrum of mythic purples, inviting a sense of wonder and imagination. These colors tap into a dreamlike quality, resonating with the enchanting themes of the trend. Shaded Spruce, a nocturnal teal, introduces a calming, earthy element, reminiscent of lush, tropical landscapes at night. Finally, Blue Atoll, a vibrant ocean blue, enhances the palette with a refreshing touch that reflects the allure of water under moonlight. Together, these colors create a dynamic interplay that encourages self-expression and connection to nature.

COLOR HARMONIES **MOONBATH**



@commas11.png

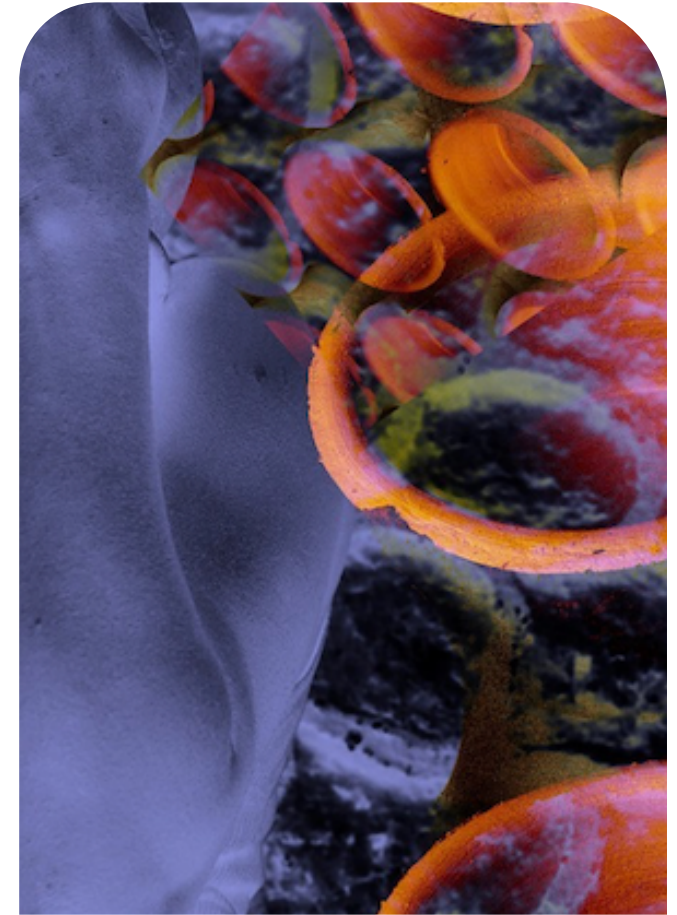


PALETTE 1

PALETTE 2



Bluemarble 7.jpg



@atmos9.png



PALETTE 3

KEY LOOKS **MOONBATH**



Iceberg-9.jpg

MOONBATHING



ferrari3.jpg

CYBER SLEEK



bluemarble4.jpg

PSYCHEDELIC RAVE



dipetsa8.jpg

IMMERSIVE TROPICS



tokyo james 4.jpg

ISLAND CRAFT

KEY LOOKS **MOONBATH**



Casablanca Brand 12.jpg

MOONBATHER



8on8 9.webp

CYBER SLEEK



bluemarble6.jpg

PSYCHEDELIC RAVE



@albertoortizrey2.png

IMMERSIVE TROPICS



Casablanca Brand 21.jpg

ISLAND CRAFT

KEY MATERIALS **MOONBATH**

BLURRED STRIPES



diesel 2.jpg



White Mountaineering 10.jpg

SPORTY MESH



Gucci 5.jpg



Kenzo -29.jpg

SOLAR ELEMENTS



@bluemarble 9.png

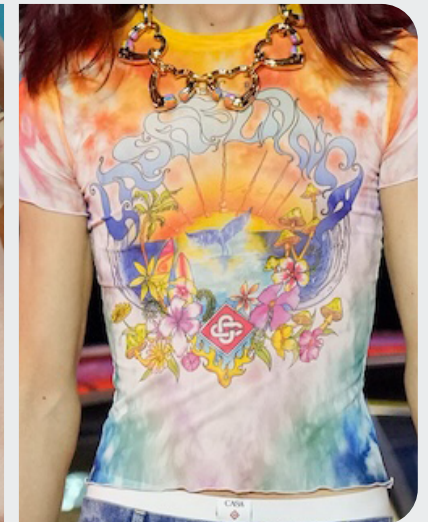


dashan.jpg

IMMERSIVE HOLIDAY SCAPES



@mytheresamen_7.png



Casablanca Brand 17.jpg



Wales Bonner 11.jpg

KEY ELEMENTS MOONBATH

BAGGY LOW-RISE



helen anthony



Casablanca Brand 10.jpg

HOLIDAY POLOS



@ori.rio.ori.jpg



acnestudios23.jpg

SPARKLING DENIM



Casablanca Brand 17.jpg



@bluemarble 8.png

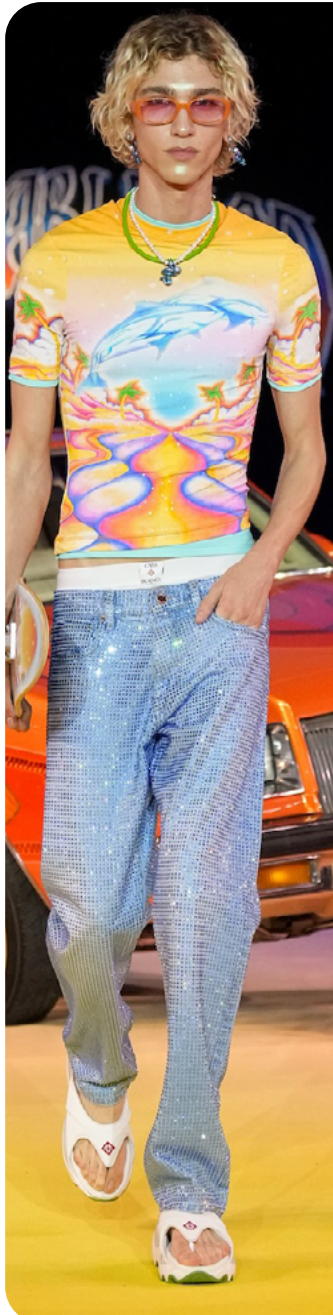
BOHEMIAN PATCHWORKS



@attiresaint 21.jpg



eliou.jpeg



Casablanca Brand 15.jpg

KEY ACCESSORIES MOONBATH



helen-anthony-s25-097-11431666.jpg

RETRO AVIATORS



Vuitton 23.jpg



MAISON MIHARA YASUHIRO 19.jpg

CROCHET BEANIES



Wooyoungmi_19.jpg



angelecr4.png

SURFER FLIP-FLOPS



Auralee 27.jpg

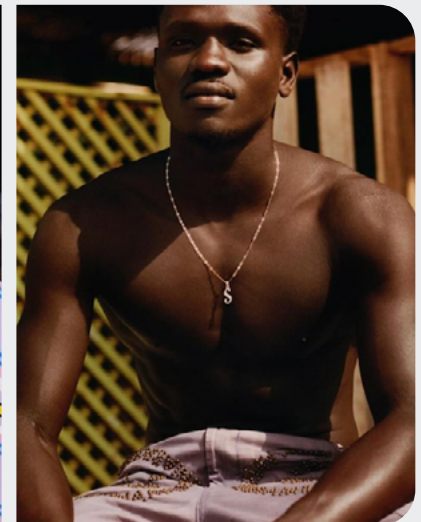


White Mountaineering 10.jpg

BEACH NECKLACES



Casablanca Brand 16.jpg



@bluemarble 7.png

AI INTERPRETATIONS **MOONBATH**



VIRTUAL BEACH



TROPIC SKATER



PSYCHEDELIC NIGHT



MOONLIGHT CRAFT



TREND ROMANTIC MISCHIEF



atxv 3.jpg



@acnestudios 4.png



mood pinterest.jpeg

The Complex Beauty of Human Emotion

The SS26 trend titled Romantic Mischief celebrates emotional diversity, emphasizing the full spectrum of human emotions as essential to understanding the complexities of life. This trend thrives on contrasts—minimal versus maximal, restraint versus eccentricity—creating a vibrant interplay between opposites. Influences from indie sleaze and various subcultures inject an edgy, rebellious attitude, while an urban romantic aesthetic conveys a sense of yearning and raw emotion.

Driven by desire and emotional exploration, Romantic Mischief reflects a new sensuality that embraces imperfection, honoring the messy yet beautiful tapestry of human experiences. The color palette features nude and ghostly pinks, alongside vibrant red and fuchsia berry shades, creating a striking visual dichotomy. Complementary hues such as beige, violet-tinted grays, and khaki ground the collection, enhancing its depth.

Materials play a pivotal role in this trend, incorporating rebellious portraits, rugged leathers, glam rock cheetah prints, and rough paintings that speak to its multifaceted nature. Key design elements include shrunken fits and slinky deep V-necklines, alongside romantic tie-up details and raw edge finishes, which imbue the pieces with a sense of effortless chic. Looks inspired by metrosexuals, romantic grunge, indie sleaze, rebel poets, and soft club kids offer an eclectic yet harmonious style. This trend invites wearers to embrace their emotional complexity, merging elegance with rebellion to create a fresh narrative that resonates with the heart of modern life.

[ACCESS ALL IMAGES
CLICKING HERE](#)

MOOD ROMANTIC MISCHIEF



@attiresaint 11.png



JAKIORAMOUR2.jpeg



atxv 6.jpg



INDIE SLEAZE+205%

SOFT GRUNGE+60%

syd pinterst.jpeg



dazedmag 7.png



demeulemeester-bks-s25-034.jpg



@acnestudios 3.png



Random Identities -7.png

DISRUPTIVE CHIC - MINIMAL/MAXIMAL - URBAN ROMANCE - SENSUALITY - INDIE SLEAZE

COLOR PALETTE ROMANTIC MISCHIEF



demeulemeester-bks-s25-019.jpg



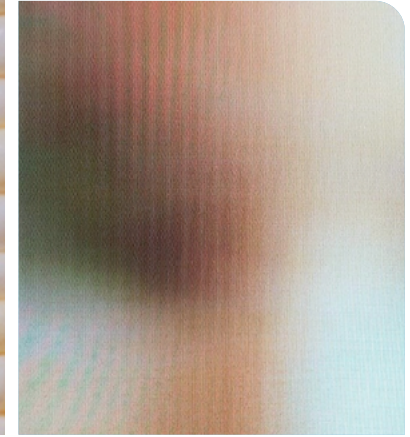
Dries Van Noten



Lazoschmidl8.png



@atmos6.png



@theleoissallinthemind3.png



@florentinaleitner 19.png



Prada 44.jpg

Shark
18-1703 TCX

Raisin
19-1606 TCX

Beetroot Purple
18-2143 TCX

Poppy Red
17-1667 TCX

Carinaria
12-1303 TCX

Pink Tint
12-1404 TCX

Boulder
14-1110 TCX

Green Moss
17-0636 TCX

The Romantic Mischief color palette is a captivating blend of emotional depth and visual impact. Violet-tinted grays, paired with Raisin and Shark, create a moody yet sophisticated backdrop, evoking a sense of introspection. The passionate bold shades of Beetroot Purple and Poppy Red inject energy and intensity, symbolizing raw emotion and desire. In contrast, Carinaria and Pink Tint offer soft, ghostly rose tones that evoke tenderness and nostalgia, inviting a sense of calm within the chaos. Boulder serves as a grounding neutral, balancing the palette and providing versatility, while Green Moss adds an urban khaki touch, representing the blend of nature and city life. Together, these colors create a dynamic interplay of softness and strength, encouraging wearers to embrace their emotional complexity and express themselves with a mix of romanticism and mischief. This palette ultimately enriches the aesthetic, celebrating both the serene and the rebellious aspects of the human experience.

COLOR HARMONIES ROMANTIC MISCHIEF



magliano-m-atm-s25-017.jpg



PALETTE 1

PALETTE 2



@attiresaint 4.png



@attiresaint 10.png



PALETTE 3

KEY LOOKS **ROMANTIC MISCHIEF**



ludovic de saint sernin.jpg

METROSEXUALS



masha popova-9.jpg

ROMANTIC GRUNGE



Toga -4.jpg

INDIE SLEAZE



Our legacy 2.png

REBEL POETS



Dsquared2 -8.jpg

SOFT CLUBKIDS

KEY LOOKS **ROMANTIC MISCHIEF**



Margiela17.jpg

METROSEXUALS



demeulemeester 4.jpg

ROMANTIC GRUNGE



loewe 8.jpg

INDIE SLEAZE



Bottega Veneta 14.jpg

REBEL POETS



Coperni 2.jpg

SOFT CLUBKIDS

KEY MATERIALS ROMANTIC MISCHIEF



milan streetstyle

POETIC FLOWERS



peter-do-045.jpg



ludovic saint sernin.jpg

RUGGED LEATHERS



@marcforne 1.png

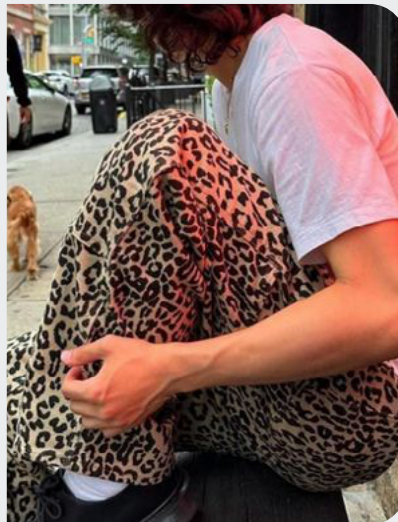


Bed Jw Ford 1.jpg

GLAMROCH CHEETAH PRINTS



Tom Ford 1.png



@jellyallan2.jpeg

ROUGH PAINTINGS

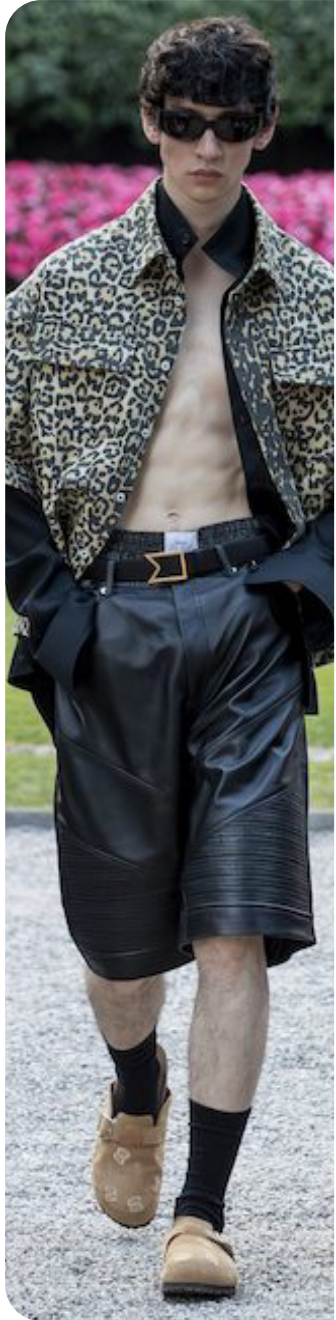


rocha



prada7.jpg

KEY ELEMENTS **ROMANTIC MISCHIEF**



rhude

SHRUNKEN FITS



@lnccl.png



onitsuka tiger 4.jpg

ROMANTIC TIE-UPS



marlon.noah.jpeg



kim shui 2.jpg

RAW-EDGE DETAILS



paris streetstyle



urban outfitters29.webp

SLINKY DEEP Vs



Margiela14.jpg



palomo spain 12.jpg

KEY ACCESSORIES **ROMANTIC MISCHIEF**



Margiela5.jpg

ROCKSTAR CAT-EYES



Namesake 8.jpg

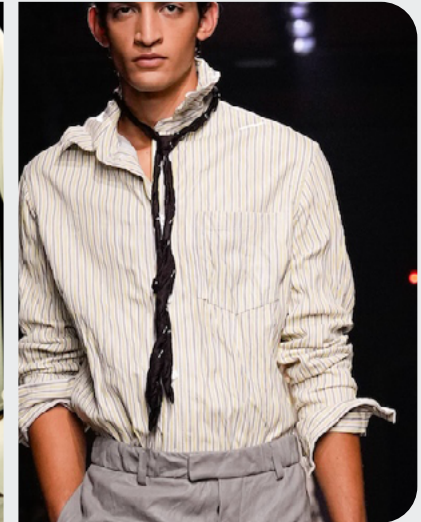


JW Anderson 45.jpg

FEMININE FOULARD SCARFS



002m-fc.jpg 025-rewarded-composition-1.jpg



Bottega Veneta 13.jpg

LEATHER TOTES



Prada 32.jpg

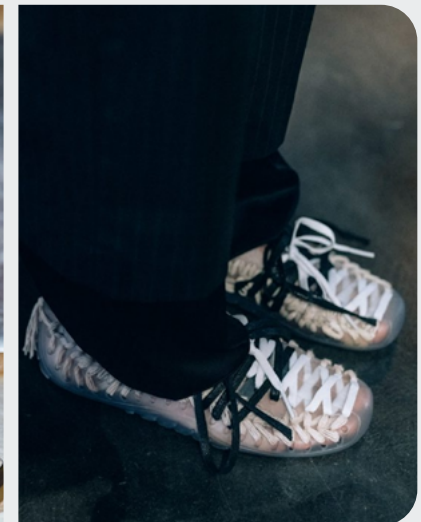


Vuitton 75.jpg

NEO LACE-UP DERBYS



rocha-clp-s25-050.jpg



litkovska-clp-po-s25-003-552x828.jpg

AI INTERPRETATIONS **ROMANTIC MISCHIEF**



2010 BOYBAND



SLEEK REBELS



CHIC SUBVERSION



DREAMY GRUNGE



TREND OUT OF OFFICE



japan concept knit.jpeg



@attiresaint 5.png



@attiresaint 16.png

Embracing Individuality

The SS26 trend: Out Of Office celebrates a vibrant and eclectic fusion of styles that embrace uniqueness and “otherness.” This trend thrives on the collision of subcultural influences, creating a rich tapestry of aesthetics that defy traditional boundaries. At its core, bloke-core emerges as a sporty casual aesthetic that cleverly merges elements of mass culture with feminine codes, resulting in a playful and refreshing visual dialogue.

Self-irony is a cornerstone of this trend, adding a layer of humor and personality that resonates with a youth-driven audience. With a strong leisure focus, Out Of Office draws inspiration from the 2010s, reimagining past styles with a contemporary twist. This approach allows for bold statements while celebrating individuality. The color palette is a striking mix of primary bolds—like vibrant greens, yellows, and reds—paired with classic hues such as dark navy and burgundy. Fresh light cyan blues and soft pastels provide an option for more subdued looks, ensuring versatility in expression.

Materials play a significant role in defining this trend, featuring ironic graphics, striped shirting, and sporty prints that add a playful edge. Key details include sporty piping, layered items, cropped tops, and baseball-inspired cuts, contributing to the overall casual vibe. Looks associated with this trend include normcore basics, 2010s frat boy aesthetics, jogging 2.0, and grunge school influences, showcasing a balance of slim basics with relaxed silhouettes. Ultimately, Out Of Office invites a spirited exploration of style, celebrating individuality and self-expression in everyday fashion.

[ACCESS ALL IMAGES
CLICKING HERE](#)

MOOD OUT OF OFFICE



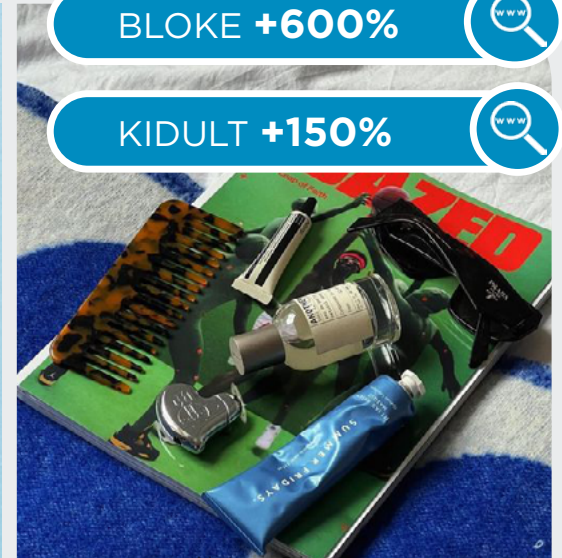
@attiresaint 15.png



abigail pinterest.jpeg



ricenineten4.jpg



Notans 2.jpeg

BLOKE +600%

KIDULT +150%



mina barrio pinterest.jpeg



romeo hunte-6.jpg



kanyon.jpeg



jw anderson.jpg

KIDULT - LEISURE - BLOKE CORE - FRAT BOY REFERENCES - CLASH & COLLIDE - 2010S

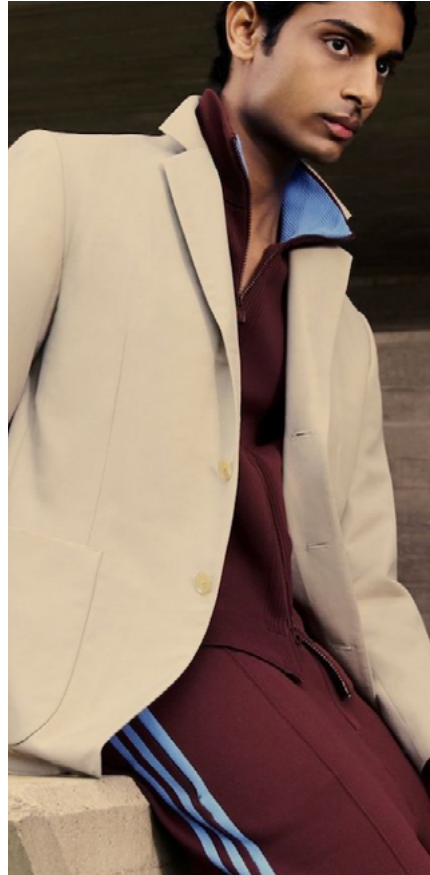
COLOR PALETTE OUT OF OFFICE



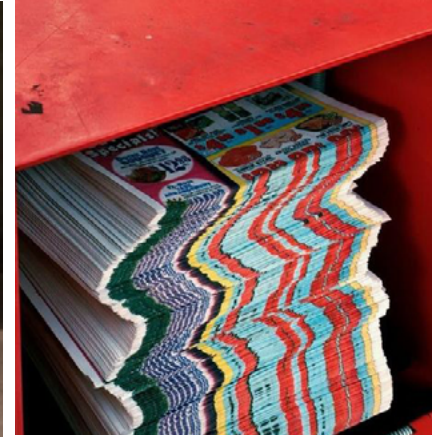
EgonLab 6.png



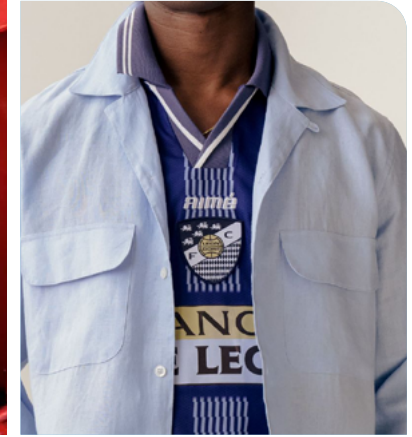
Dries Van Noten



@mytheresamen 6.png



favd_doseofdesign.jpeg



aimeleondore5.jpg



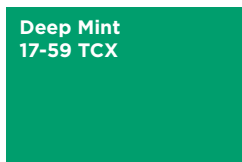
jotex.jpeg



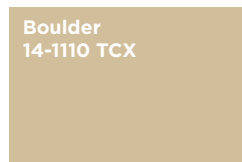
prada



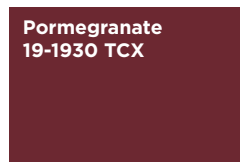
Primrose Yellow
13-0755 TCX



Deep Mint
17-59 TCX



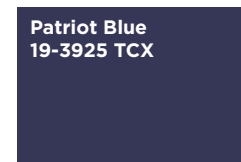
Boulder
14-1110 TCX



Pomegranate
19-1930 TCX



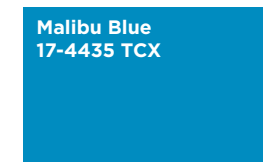
Poppy Red
17-1667 TCX



Patriot Blue
19-3925 TCX



Skyride
14-4215 TCX



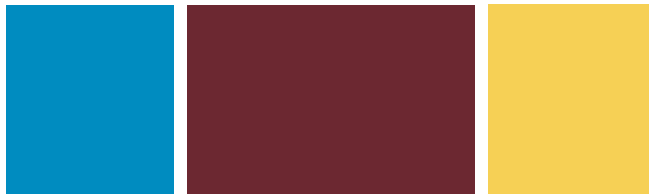
Malibu Blue
17-4435 TCX

The Out Of Office color palette is a vibrant and dynamic fusion that reflects individuality and self-expression. Boulder, a timeless beige, serves as a versatile base, providing warmth and neutrality. Deep Mint introduces a bold green, energizing the palette with a fresh, lively essence. Primrose Yellow and Poppy Red are striking basic shades that inject brightness and playfulness, evoking a sense of fun and spontaneity. Darker classic shades like Pomegranate and Patriot Blue offer depth and sophistication, grounding the overall aesthetic while enhancing the visual interest. These richer tones create a perfect contrast to the lighter, more vibrant colors, allowing for versatile styling options. Finally, Malibu Blue, a refreshing cyan tint, adds a crisp, invigorating touch that embodies a youthful spirit. Together, this palette celebrates diversity and encourages bold fashion choices, making it perfect for a trend that embraces uniqueness and "otherness."

COLOR HARMONIES **OUT OF OFFICE**



Prada 48.jpg



PALETTE 1

PALETTE 2



notans .jpeg



romeo hunte-5.jpg



PALETTE 3

KEY LOOKS OUT OF OFFICE



willy chavaria

NORMCORE



Casablanca Brand 5.jpg

2010s FRAT BOYS



Milan Streetstyle 3.jpg

JOGGING 2.0



Bottega Veneta 17.jpg

GRUNGE SCOOL



acnestudios27.jpg

SLIM BASICS

KEY LOOKS OUT OF OFFICE



tibi 1.jpg

NORMCORE



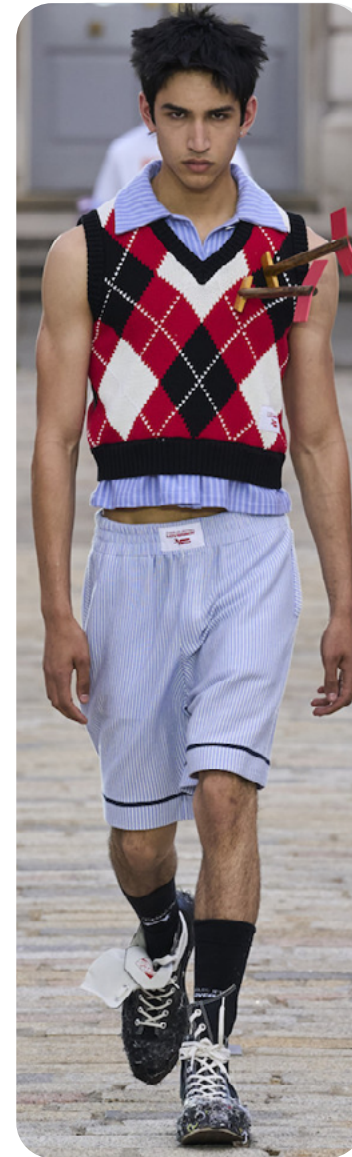
willy chavarria

2010s FRAT BOYS



acnestudios26.jpg

JOGGING 2.0



Charles Jeffrey Loverboy 13.jpg

GRUNGE SCHOOL



Prada 12.jpg

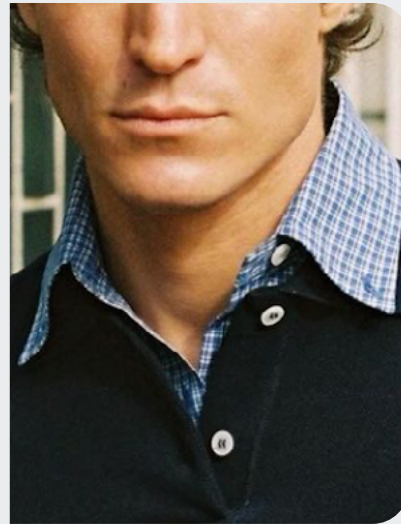
SLIM BASICS

KEY MATERIALS OUT OF OFFICE

MICROCHECKS



zara.jpg



@andreafaceccio 2.png

IRONIC STATEMENTS



Doublet 19.jpg



Doublet 7.png

STRIPED SHIRTING



Bluemarble 28.jpg



Auralee 23.jpg

SPORTS REFERENCES



Martine Rose 22.jpg



ricenineten3.jpg



mains.jpg

KEY ELEMENTS OUT OF OFFICE



Casablanca Brand 8.jpg

SPORTY PIPING



gucci-.jpg

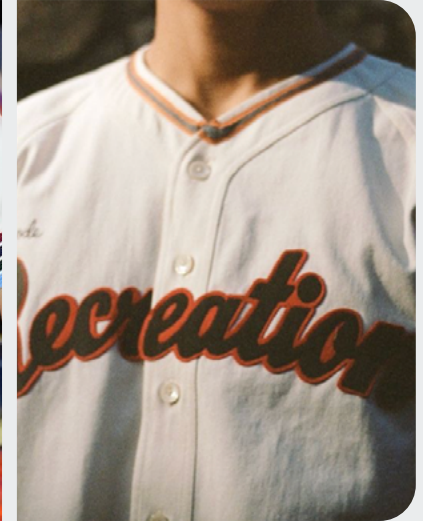


romeo hunte-1.jpg

BASEBALL INSPIRED



Casablanca Brand 5.jpg



@bode 1.png

LAYERED BASICS



romeo hunte-6.jpg



wconcept11.png

CROPPED TOPS



0008121101-spring2025 menswear-credit brand.jpg



000291-spring2025 menswear-credit brand.jpg

KEY ACCESSORIES OUT OF OFFICE



acnestudios18.jpg

PLASTIC SHOPPING BAG



bottega-veneta-062.jpg



fiorucci-098.jpg

CHARMED-UP BAG



Acne Studios.jpg



versace-101.jpg

INDIVIDUALIZED SNEAKER



MAISON MIHARA YASUHIRO 25.jpg



gazelle custom.jpeg

BASEBALL CAPS



Bianca Saunders 10.jpg



White Mountaineering 26.jpg



AI INTERPRETATIONS **OUT OF OFFICE**



SKATECLUB



NORMCORE



NOT SO PREPPY



URBAN 2000s



DATA SOURCES & ICONS

TREND GROWTH



MARKET

YEAR ON YEAR TREND
GROWTH ON E-COMMERCE



SOCIAL MEDIA

YEAR ON YEAR TREND
GROWTH ON INSTAGRAM



CONSUMER INTEREST

YEAR ON YEAR GROWTH OF
ONLINE SEARCH VOLUMES



FASHION SHOWS

YEAR ON YEAR TREND
GROWTH ON FASHION SHOWS

TREND BEHAVIOR

EDGY TREND

weak signal of a potential micro
trend with very high risk

EARLY SIGN

emerging trend with growing
perspective but higher risk

SAFE TREND

announced trend with
growing perspective and safe risk

BIG TREND

trend with a big magnitude due to high
commercial potential and quick adaption

STABLE TREND

trend that is already present in
the market with flat growth

LAST CALL

trend with decreasing perspective but
still having business potential

TREND MAGNITUDE



MANIFEST

AN ICONIC PRODUCT THAT IS
A STABLE TREND OF LARGE
MAGNITUDE WITH CONFIRMED
COMMERCIAL SUCCESS



INVEST

A CORE PRODUCT REPRESENTING
A STEADILY GROWING TREND OF
MODERATE MAGNITUDE WITH COM-
MERCIAL POTENTIAL



TEST

A STATEMENT PRODUCT WITH
GROWING PERSPECTIVE BUT
SMALLER MAGNITUDE AND
HIGHER RISK



LIVETREND

THANK YOU!

You may not copy, reproduce, distribute, publish, display, perform, modify, create derivative works, transmit, or in any way exploit any such content, nor may you distribute any part of this content over any network, sell or offer it for sale, or use such content to construct any kind of database. You may not alter or remove any copyright or other notice from copies of the content on any Livetrend report.

**If you have further needs, please
contact us via chat or at barbara@livetrend.co**