



WOMENSWEAR
SS 2025
FASHION SHOWS
MUST-HAVE
FOOTWEAR



LIVETREND

SS25 FOOTWEAR INTRODUCTION



andreadamo-038.jpg



iceberg-074.jpg



victoria-beckham-clp-s25-122.jpg



van-noten-clp-s25-113.jpg



FASHION SHOWS

Timeless Fusion The SS25 footwear collections unveiled a captivating blend of styles for diverse tastes. In the casual category, comfort took center stage with slippers and vibrant flip-flops, complemented by crochet and woven designs. The classic and timeless segment celebrated heritage and enduring elegance with classic ballerinas and versatile loafers, alongside refined ankle strap shoes. For those drawn to chic and glam, the party category has presented sculptural curved heels and pointed-toe flats, and playful kitten styles. Some bold platform heels have been spotted too, even this product has been announced as a last call. Lacing strapped-in shoes and ladylike slingbacks introduced refinement, with nostalgic grandma twist designs enhancing the mix. Across all themes, the SS25 collections explored rich textures and innovative details, ensuring each piece resonates with fashion enthusiasts and investment-driven clients alike.

This forecasting report is based on Data extracted from 225 International fashion shows of NY, London, Milan and Paris with 52 000 products analyzed. The trends are organized by visibility (number of looks presenting the trend attribute) and the percentage shows the trend growth compared to SS24 fashion shows. Find the relating icons & stamps on the last slide.

[ACCESS ALL IMAGES
CLICKING HERE](#)



CASUAL MUST-HAVES

The SS25 footwear collection showcased a captivating blend of casual and cool styles. Slippers emerged as a staple, offering effortless comfort while maintaining a chic aesthetic. Flip-flops took on a fresh twist, featuring vibrant colors and unique designs that elevate their laid-back vibe. Crochet and woven shoes brought a tactile element to the lineup, evoking a sense of artisanal craftsmanship and summer ease. Retro and vintage sneakers added a playful touch, celebrating nostalgia while remaining stylishly relevant.



LIVETREND

SS25 CASUAL FOOTWEAR **THE ESSENTIAL THONG**

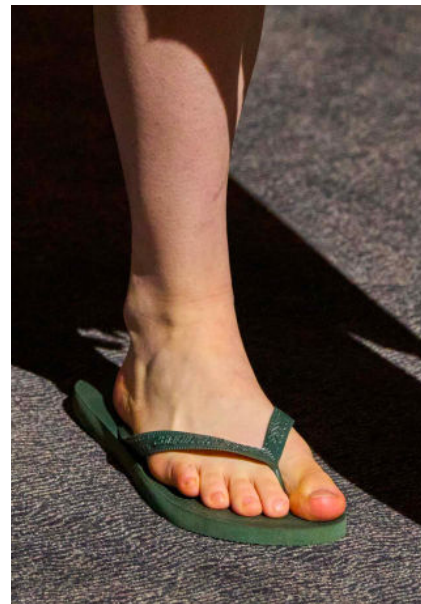
BIG TREND



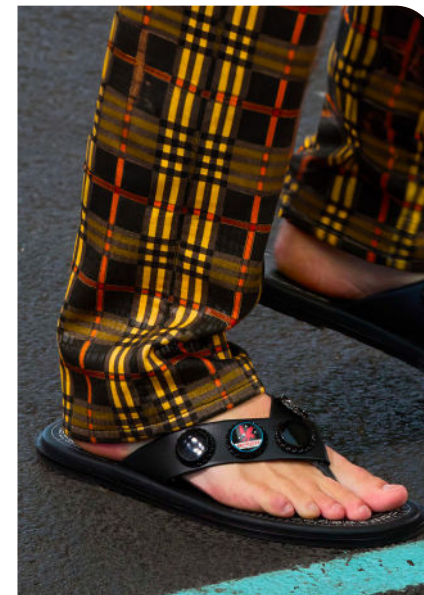
philosophy-063.jpg



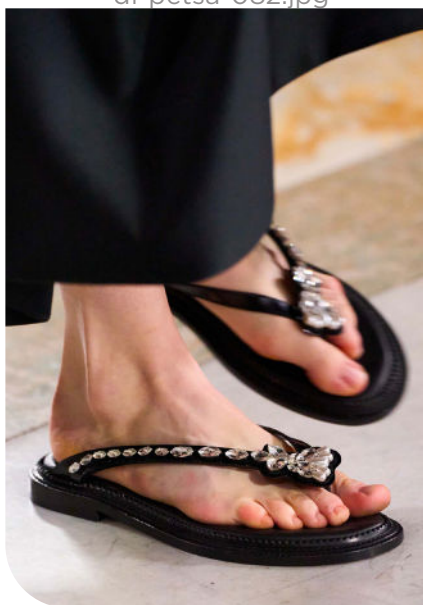
di-petsa-082.jpg



hodakova-039.jpg



off-white-056.jpg



rocha-078.jpg



simkhai-056.jpg



miu-miu-132.jpg

SS25 CASUAL FOOTWEAR **THE KNIT & WEAVING**

BIG TREND



attico.jpg



roberto-cavalli-106.jpg



emporio-armani-261.jpg



fendi-088.jpg



rojas-028.jpg



roberto-cavalli-108.jpg



chloe-169.jpg

SS25 CASUAL FOOTWEAR **THE SLIPPER**

BIG TREND



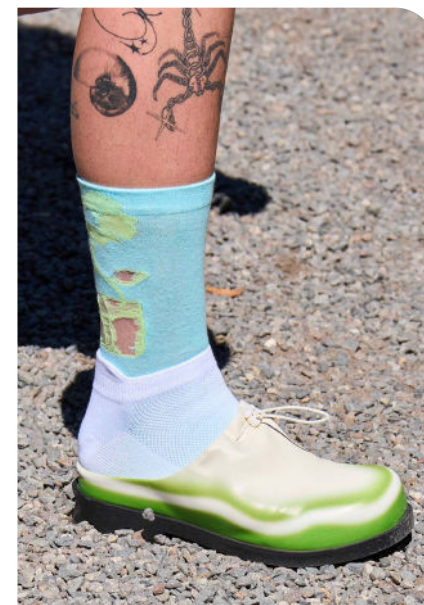
tokyo-james-068.jpg



carven-074.jpg



boss-202.jpg



ph5-077.jpg



prada-097.jpg



hui-074.jpg



hilfiger-081.jpg

SS25 CASUAL FOOTWEAR **THE MINIMAL FLAT**

BIG TREND



Miu Miu.jpg



sarawong-074.jpg

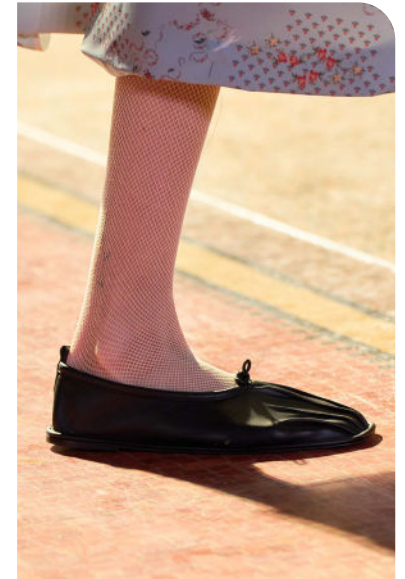


ferretti-076.jpg

BIG TREND



miyake-094.jpg



meruert-tolegen-041.jpg



ami.jpg

EASY SLIDE

MONASTIC SLIP ON



SS25 CASUAL FOOTWEAR **THE SNEAKERS**

BIG TREND



LOEWE .webp

TEXTILE SNEAKER



tibi-096.jpg



bottega-veneta-113.jpg

BIG TREND



federico cina.jpg

SOCCKER SNEAKER



rave-review-081.jpg



vaquera-s25-058.jpg





CLASSIC MUST-HAVES

The SS25 footwear collection centered around the theme of minimalist and timeless elegance. Ballet flats effortlessly combine comfort and sophistication. Flats and kitten heels with pointed toes provided a sleek and elegant option, perfect for both day and night looks.

Derby shoes showcased clean lines and understated designs, making them versatile staples for any wardrobe; while loafers maintained their status as a go-to choice for both casual and polished looks. Mary Janes stay as a stable trend, featuring refined details that enhance their timeless appeal. Lady-like shoes, including slingbacks, captured timeless elegance, while designs with a grandma twist brought a playful nostalgia to the collection.

Heel thongs emerged as a new option, blending simplicity with a touch of modernity.



LIVETREND

SS25 CLASSIC FOOTWEAR **THE BALLERINA**

BIG TREND



rocha-080.jpg



-fendi-.webp



ACNE STUDIO .webp

BIG TREND



sandy-liang-081.jpg



anteprima-107.jpg



rocha-051.jpg

TIMELESS BALLET FLAT

HEELED BALLERINA



SS25 CLASSIC FOOTWEAR **THE POINTY TOE FLAT**

BIG TREND



dior-104.jpg



n-21-037.jpg



ferragamo-111.jpg



Giambattista-valli-.webp



fiorucci-140.jpg



gabriela-hearst.jpg



comey-105.jpg



SS25 CLASSIC FOOTWEAR **THE KITTEN HEELS**

BIG TREND



kim-shui-050.jpg



labrum-043.jpg



fiorucci-122.jpg



vitto-034.jpg



tibi-098.jpg



simkhai-052.jpg



federico-cina-s25-054.jpg

SS25 CLASSIC FOOTWEAR **THE NEO DERBIES**

BIG TREND



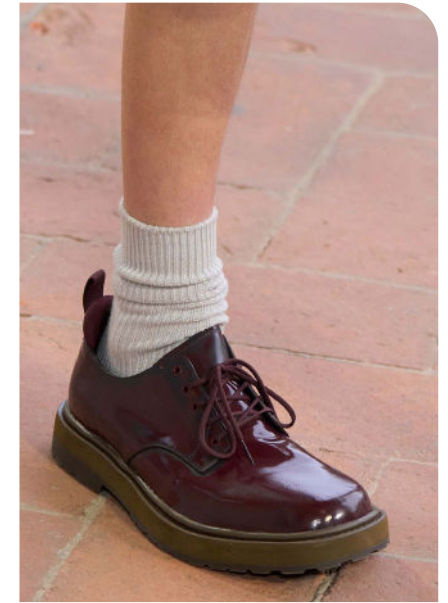
victoria-beckham-clp-s25-122.jpg



ami.jpg



moschino-190.jpg



onitsuka-tiger-s25-114.jpg



rocha-065.jpg



bally-069.jpg



toga-038.jpg

SS25 CLASSIC FOOTWEAR **THE TIMELESS LOAFER**

BIG TREND



bottega-veneta-114.jpg

CHIC LOAFER

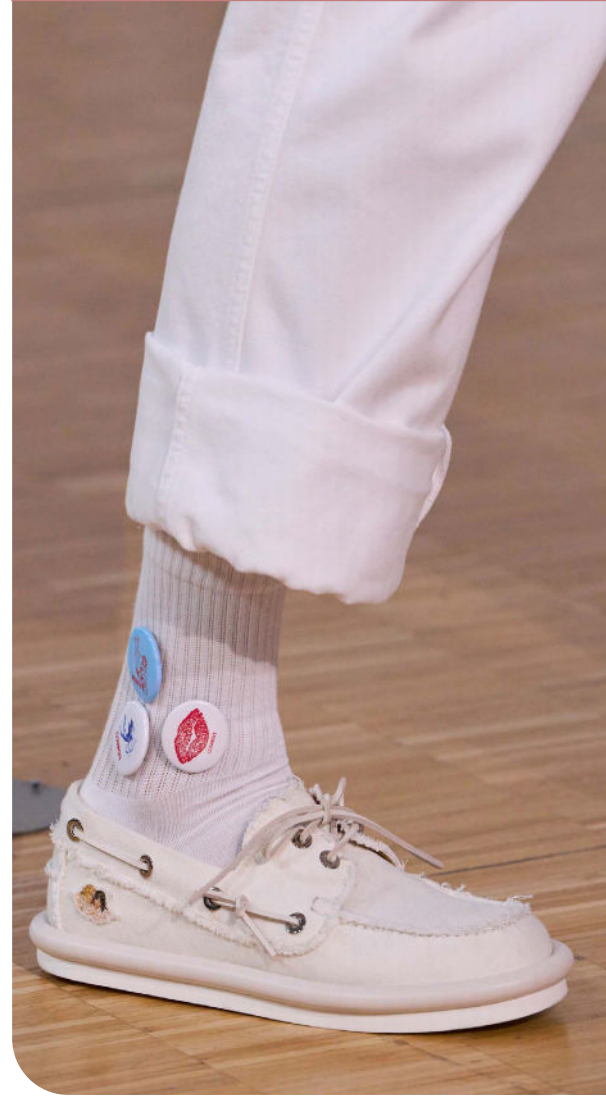


-loewe- .webp



prada_2.jpg

BIG TREND



fiorucci-129.jpg

BOAT SHOES



monse-049.jpg



loewe-078.jpg

SS25 CLASSIC FOOTWEAR **THE MARY-JANE**

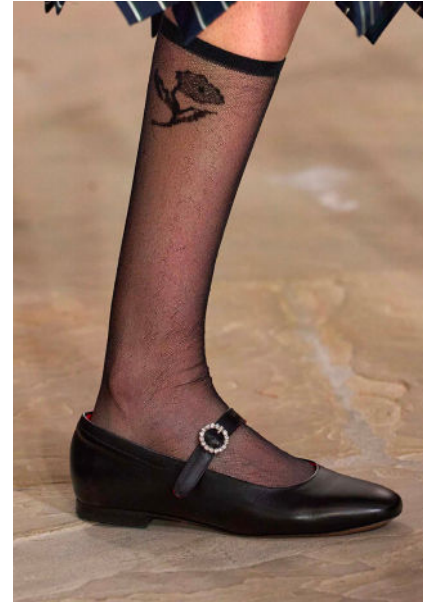
BIG TREND



liberatore.jpg



antonio-marras-130.jpg



kent curwen.jpg



coperni-clp-s25-074.jpg



comme-des-garcons-044.jpg



bora-aksu-s25-094.jpg



miu-miu-159.jpg

SS25 CLASSIC FOOTWEAR **THE HEELED THONGS**

BIG TREND



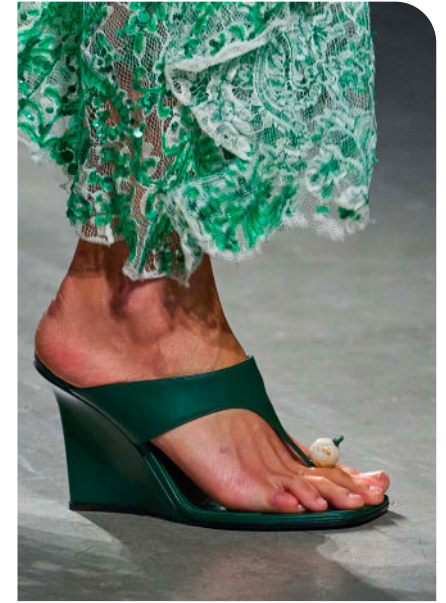
missoni.jpg



attico-049.jpg



ferragamo-clp-s25-117.jpg



etro-064.jpg



zimmermann.jpg



carven-067.jpg



chloe-154.jpg

SS25 CLASSIC FOOTWEAR **THE LADYLIKE STYLES**

BIG TREND



iceberg-074.jpg



kors-094.jpg



miu-miu-133.jpg

BIG TREND



tod-s-047.jpg



tory-burch-031.jpg



adam-leenaerdt-067.jpg

SLING BACK

GRANDMA PUMP

SS25 CLASSIC FOOTWEAR **THE MULES**

BIG TREND



andreadamo-038.jpg



bottega-veneta-120.jpg



mark-fast-070.jpg

BIG TREND



bottega-veneta-118.jpg



herrera-s25-066.jpg



attico-053.jpg

OPEN TOE

POINTY TOE



PARTY MUST-HAVES

The SS25 footwear collection embraced a vibrant theme of chic and glam, showcasing styles that exude sophistication and allure. Ankle strap shoes added a delicate touch, providing a graceful finish to various styles, while Tstrap styles offered a minimalistic appeal. Mules rounded out the collection, embodying a sleek and effortless aesthetic that embodies the essence of modern design.

Curved heel shoes emerged as a standout trend, offering a sculptural silhouette that elevates any ensemble.

Platform heels have been seen during the shows, even if a declining trend in the market, while kitten heels offered a refined touch, ideal for those seeking a blend of style and ease. Strappy sandals added a romantic flair, enhancing the overall aesthetic with intricate detailing.

Finally, block-heels featuring squared heels or conic ones provided a modern twist on classic styles, ensuring stability without sacrificing the style.



LIVETREND

SS25 PARTY FOOTWEAR **THE MINIMALIST HEEL**

BIG TREND



ester-manas.jpg

ANKLE STRAP



antonio-marras-132.jpg



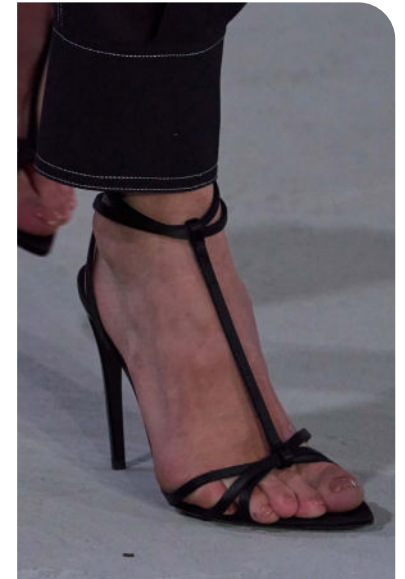
popova.jpg

BIG TREND

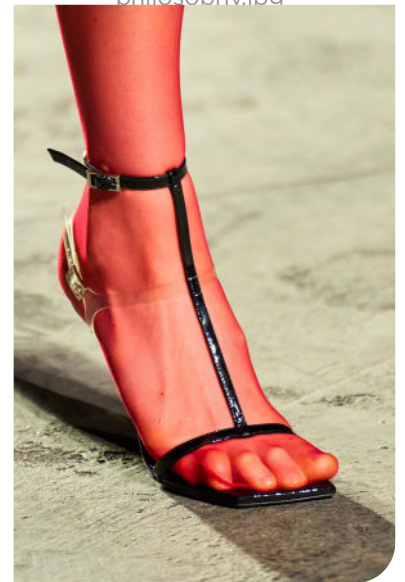


boss-175.jpg

T-STRAP



philosophy.jpg



versace.jpg

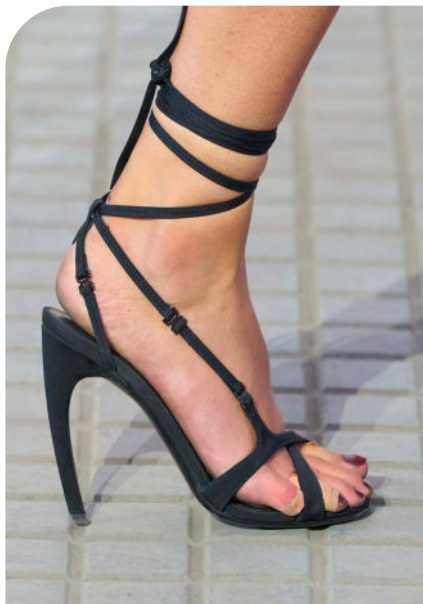


SS25 PARTY FOOTWEAR **THE BENTED HEEL**

BIG TREND



tory-burch-030.jpg



attico (2).jpg



stella-mccartney-114.jpg



ester-manas-077.jpg



ester-manas-073.jpg



palomo-spain.jpg



Victoria Beckham.jpeg

SS25 PARTY FOOTWEAR **THE PLATFORM HEELS**

BIG TREND



versace-clp-s25-073.jpg



chanel-clp-s25-157.jpg



elie-saab-066.jpg



son-jung-wan.jpg



weinsanto-081.jpg



untitled-075.jpg



prada-095.jpg

SS25 PARTY FOOTWEAR **THE STRAPPY STYLE**

BIG TREND



marco-rambaldi-133.jpg



attico-s25-043.jpg



casablanca-149.jpg



burberry-068.jpg



ferragamo-112.jpg



van-noten-clp-s25-113.jpg



demeulemeester-075.jpg

SS25 PARTY FOOTWEAR **THE BLOCK HEEL**

BIG TREND



dojaka-041.jpg



prada-093.jpg



ulla-johnson-210.jpg

BIG TREND



onitsuka-tiger-108.jpg



prada-098.jpg



a612.jpeg

SQUARED HEEL

BENTED BLOCK



BOOTS MUST-HAVES

The SS25 footwear collection showcased more than 230 looks with boots. Divided in two contrasted directions, the trend is clearly for knee high boots

The first direction is the slouchy wide boot. They made a statement, combining relaxed silhouettes with trendy flair, perfect for transitioning between seasons. The second is sock boot, providing a sleek and modern look that complements various outfits from sporty to feminine ones.

The new hybrid boots have been spotted as a trompe l'oeil, they are designed as an extension of sneakers or loafers, creating creative new styles.



LIVETREND

SS25 CASUAL FOOTWEAR **THE SLOUCHY WIDE BOOTS**

BIG TREND



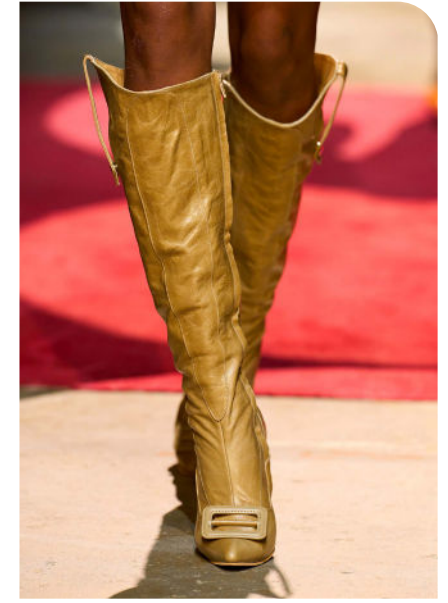
custo.jpg



iro.jpeg



vitto-031.jpg



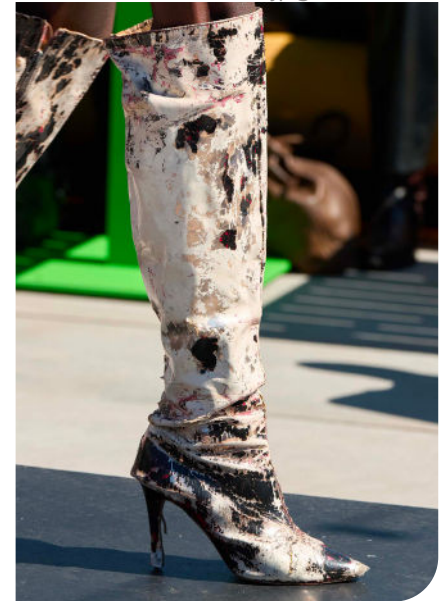
coker-025.jpg



ahluwalia-043.jpg



monse-055.jpg



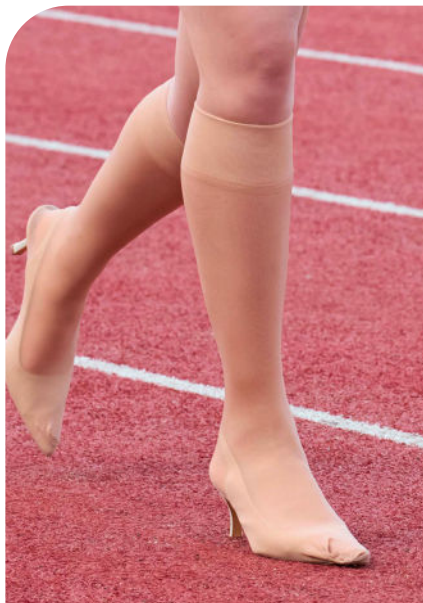
rio-sport-046.jpg

SS25 CASUAL FOOTWEAR **THE SOCKS BOOTS**

BIG TREND



dior.jpg



avavav-077.jpg



knwls-044.jpg



Vetements-081.jpg



miyake-079.jpg



emporio-armani-272.jpg



ling-050.jpg

SS25 CASUAL FOOTWEAR **EMERGING SIGNS**

BIG TREND



Dior.webp



demeulemeester-071.jpg

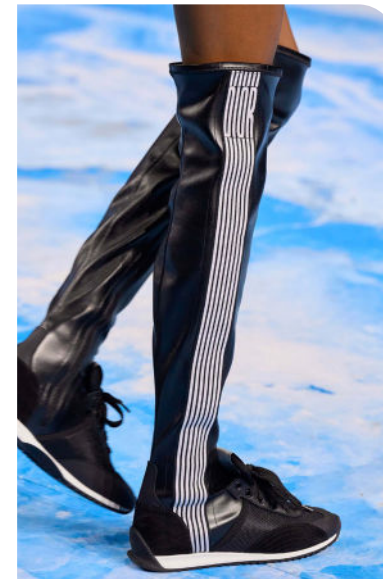


stella-mccartney.jpg

BIG TREND



-jil-sander-.webp



dior-109.jpg



gucci-155.jpg

THE BOXER SHOE

TROMPE L'OEIL

DATA SOURCES & ICONS

TREND GROWTH



MARKET

YEAR ON YEAR TREND GROWTH ON E-COMMERCE



SOCIAL MEDIA

YEAR ON YEAR TREND GROWTH ON INSTAGRAM



CONSUMER INTEREST

YEAR ON YEAR GROWTH OF ONLINE SEARCH VOLUMES



FASHION SHOWS

YEAR ON YEAR TREND GROWTH ON FASHION SHOWS

TREND BEHAVIOR

EDGY TREND

weak signal of a potential micro trend with very high risk

EARLY SIGN

emerging trend with growing perspective but higher risk

SAFE TREND

announced trend with growing perspective and safe risk

BIG TREND

trend with a big magnitude due to high commercial potential and quick adaption

STABLE TREND

trend that is already present in the market with flat growth

LAST CALL

trend with decreasing perspective but still having business potential

TREND MAGNITUDE



MANIFEST

AN ICONIC PRODUCT THAT IS A STABLE TREND OF LARGE MAGNITUDE WITH CONFIRMED COMMERCIAL SUCCESS



INVEST

A CORE PRODUCT REPRESENTING A STEADILY GROWING TREND OF MODERATE MAGNITUDE WITH COMMERCIAL POTENTIAL



TEST

A STATEMENT PRODUCT WITH GROWING PERSPECTIVE BUT SMALLER MAGNITUDE AND HIGHER RISK



DATA TO DRIVE

01
CREATIVITY

02
STRATEGY

03
SUSTAINABILITY



LIVETREND

THANK YOU!

You may not copy, reproduce, distribute, publish, display, perform, modify, create derivative works, transmit, or in any way exploit any such content, nor may you distribute any part of this content over any network, sell or offer it for sale, or use such content to construct any kind of database. You may not alter or remove any copyright or other notice from copies of the content on any Livetrend report.

If you have further needs, please contact us via chat.