



WOMENSWEAR
FASHION SHOWS
COPENHAGEN
SS 2025
KEY ITEMS



LIVETREND

INTRODUCTION COPENHAGEN SS25



0000camurckfabalemping2025edylowarqperhagenadepourvairjvdep



backstage4.webp



Rotate7.jpg



FASHION SHOWS

Contemporary Womenswear at its finest.

The SS25 Copenhagen Fashion Week showcased a stunning array of key items that captured the essence of contemporary style. Standouts included sleek polos, capri pants, and chic bathing suits, which added a fresh twist to classic summer staples. Bubble skirts were trending, often on low-waisted dresses for a modern, youthful vibe. Ladylike sheath dresses and knee-length skirts were introduced, bringing an air of elegance to the collection. On that note, high-neck blouses also made a notable appearance, adding sophistication. The runway featured gathered and draped dresses, demonstrating their timeless appeal, while casual Bermudas and denim pieces remained essential for normcore looks, emphasizing comfort and simplicity. Adding to the minimal allure, tube tops and dresses and short suit sets were prominently featured, offering a sleek, streamlined 90s aesthetic. These pieces highlighted the versatility of minimalist design, allowing for effortless transitions from day to night. Overall, the collection was a harmonious blend of contemporary trends and classic silhouettes, ensuring that there was something for every fashion enthusiast at Copenhagen's SS25 showcase.

*This report is based on the SS25 Copenhagen Fashion Shows.
Find the relating icons & stamps on the last slide.*

[ACCESS ALL IMAGES
CLICKING HERE](#)

COPENHAGEN KEY ITEMS

SS25 LIGHT TRENCHCOATS

BIG TREND



The Garment14.jpg



Joao Marashin -7.jpg



Domino Tan12.jpg



Skall2.jpg



stein.jpg



Domino Tan17.jpg



the garment

COPENHAGEN KEY ITEMS

SS25 POLO SHIRTS

BIG TREND



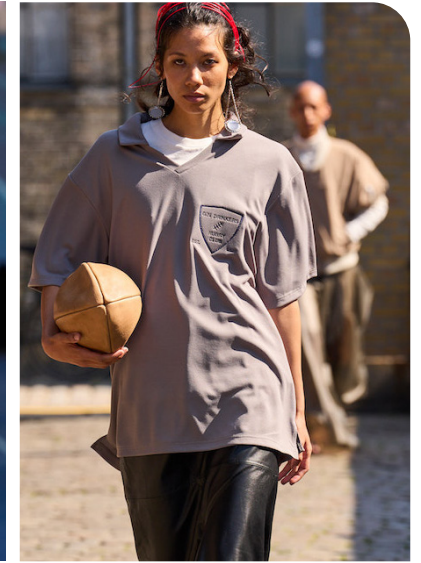
baum & pferdgarten



Gestuz 19.jpg



Baum & Pferdgarten 9.jpg



Deadwood6.jpg



Vibskov 4.jpg



stem



Operasport10.jpg

COPENHAGEN KEY ITEMS

SS25 CASUAL JEANS

BIG TREND



berner kuhl



sunflower



rabens saloner



Baum & Pferdgarten 19.jpg



stein_1.jpg



Munthe 21.jpg



Operasport7.jpg

COPENHAGEN KEY ITEMS

SS25 CAPRI PANTS

EARLY SIGN



Operasport3.jpg



Rotate19.jpg



Herskind 18.jpg



gestuz



herskind



roege hove 2.jpg



a. roege hoeve

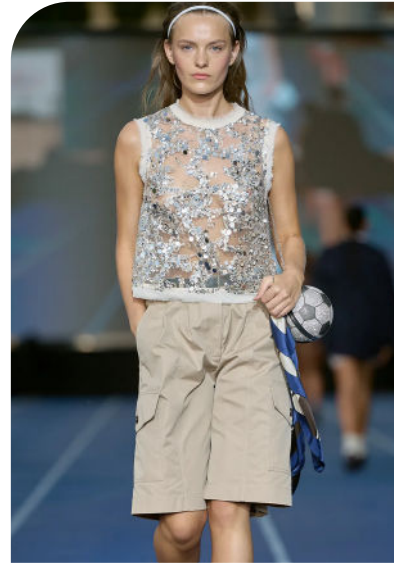
COPENHAGEN KEY ITEMS

SS25 BERMUDA SHORTS

STABLE TREND



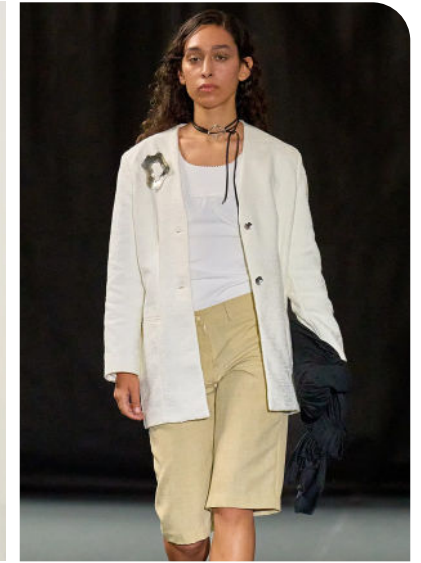
skall studio



baum & pferdgarten



skoovgard



royal danish acadely



rabens saloner



aiayu



Operasport4.jpg

COPENHAGEN KEY ITEMS

SS25 TUBES

STABLE TREND



The Garment1.jpg



Aeron4.jpg



Skall16.jpg



Herskind 13.jpg



Gestuz 17.jpg



raben saloner



Lovechild7.jpg

COPENHAGEN KEY ITEMS

SS25 SHORT SUIT

SAFE TREND



Lovechild9.jpg



Herskind 2.jpg



Remain9.jpg



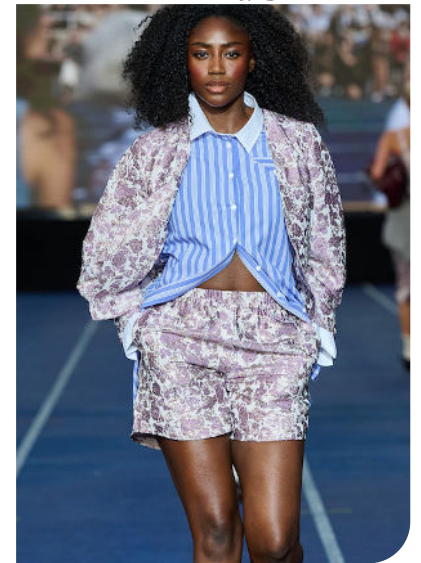
Ekroth3.jpg



Domino Tan6.jpg



Gestuz 22.jpg



Baum & Pferdgarten 13.jpg

COPENHAGEN KEY ITEMS

SS25 BUBBLE STYLES

EARLY SIGN



Rotate20.jpg



Sinead o Dwyer2.jpg



The Garment16.jpg



skovgaard-po-s25-008.jpg



Herskind 12.jpg



Forza -9.jpg



Munthe 14.jpg

COPENHAGEN KEY ITEMS

SS25 DRAPED & GATHERED DRESS

STABLE TREND



rabens saloner



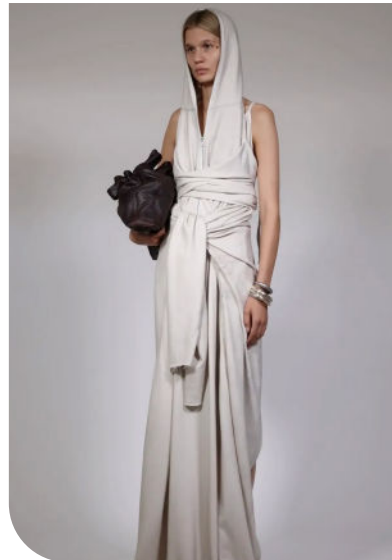
rabens saloner



Rotate17.jpg



Gestuz 20.jpg



jade crooper



remain2.png



Benedikte Lorentz 2.jpg.webp

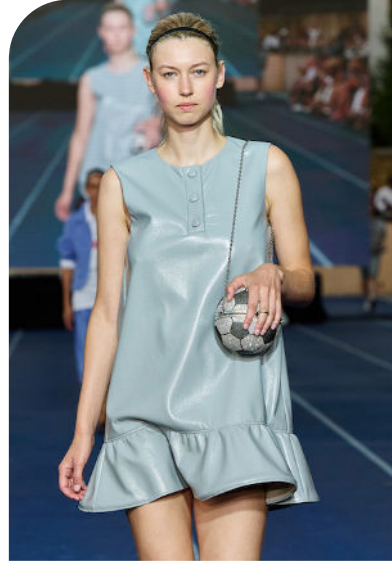
COPENHAGEN KEY ITEMS

SS25 LOW WAIST DRESSES

SAFE TREND



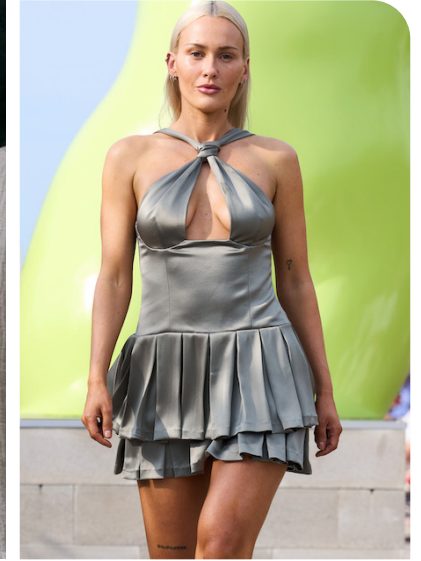
operasport



Baum & Pferdgarten 21.jpg



tg botanical6.png



Sinead o Dwyer8.jpg



skoovgard



Rotate10.jpg



Forza -7.jpg

COPENHAGEN KEY ITEMS

SS25 KNEE-LENGTH SKIRTS

SAFE TREND



Sinead o Dwyer9.jpg



Stamm6.jpg



Skall4.jpg



Herskind 19.jpg



Remain5.jpg



Remain15.jpg



The Garment6.jpg

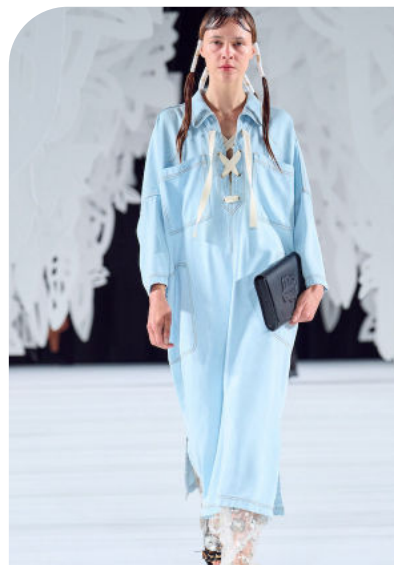
COPENHAGEN KEY ITEMS

SS25 CAFTAN MAXI DRESSES

SAFE TREND



Skall14.jpg



Munthe 18.jpg



Skall9.jpg



Marimekko -11.jpg



Remain8.jpg



Vibskov 3.jpg



Lovechild8.jpg

COPENHAGEN KEY ITEMS

FW24 CLEAN NECKLINE

EARLY SIGN



bonnetje



Domino Tan15.jpg



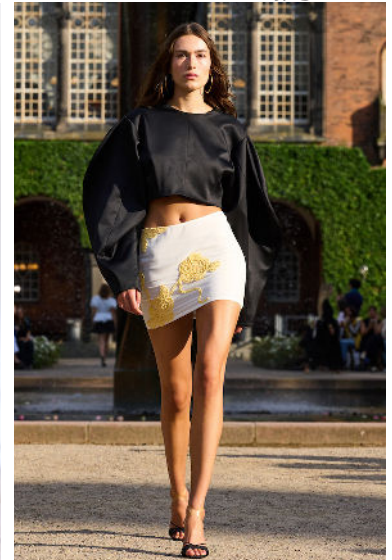
The Garment4.jpg



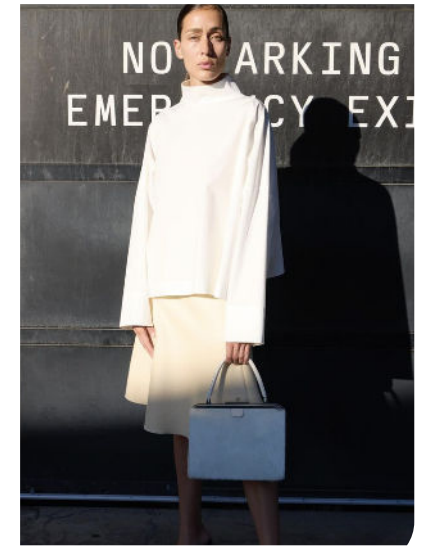
rabens saloner



Skall10.jpg



Rotate4.jpg



remain3.png

COPENHAGEN KEY ITEMS

SS25 MAILLOT

EARLY SIGN



operasport



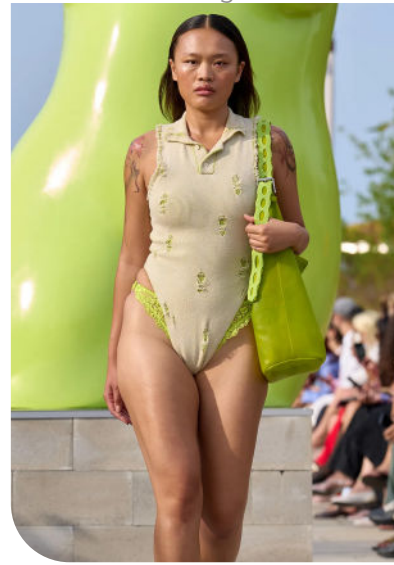
skoovgard



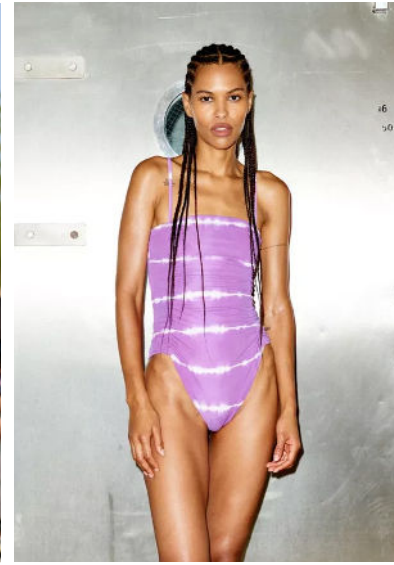
forza



caro editions



sinead o dwyer



rabens saloner



Rotate16.jpg

COPENHAGEN KEY ITEMS

SS25 TOP (AS) DRESSES

EARLY SIGN



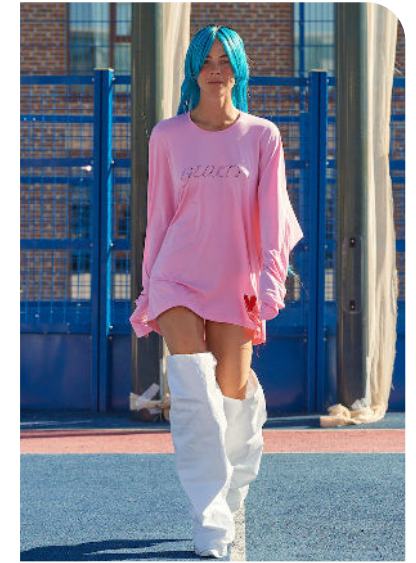
rabens saloner



Herskind 11.jpg



sia arnika



Stamm2.jpg



Baum & Pferdgarten 6.jpg



Sinead o Dwyer5.jpg



Marimekko -7.jpg

DATA SOURCES & ICONS

TREND GROWTH



MARKET

YEAR ON YEAR TREND GROWTH ON E-COMMERCE



SOCIAL MEDIA

YEAR ON YEAR TREND GROWTH ON INSTAGRAM



CONSUMER INTEREST

YEAR ON YEAR GROWTH OF ONLINE SEARCH VOLUMES



FASHION SHOWS

YEAR ON YEAR TREND GROWTH ON FASHION SHOWS

TREND BEHAVIOR

EDGY TREND

weak signal of a potential micro trend with very high risk

EARLY SIGN

emerging trend with growing perspective but higher risk

SAFE TREND

announced trend with growing perspective and safe risk

BIG TREND

trend with a big magnitude due to high commercial potential and quick adaption

STABLE TREND

trend that is already present in the market with flat growth

LAST CALL

trend with decreasing perspective but still having business potential

TREND MAGNITUDE



MANIFEST

AN ICONIC PRODUCT THAT IS A STABLE TREND OF LARGE MAGNITUDE WITH CONFIRMED COMMERCIAL SUCCESS



INVEST

A CORE PRODUCT REPRESENTING A STEADILY GROWING TREND OF MODERATE MAGNITUDE WITH COMMERCIAL POTENTIAL



TEST

A STATEMENT PRODUCT WITH GROWING PERSPECTIVE BUT SMALLER MAGNITUDE AND HIGHER RISK



DATA TO DRIVE

01
CREATIVITY

02
STRATEGY

03
SUSTAINABILITY



LIVETREND

THANK YOU!

You may not copy, reproduce, distribute, publish, display, perform, modify, create derivative works, transmit, or in any way exploit any such content, nor may you distribute any part of this content over any network, sell or offer it for sale, or use such content to construct any kind of database. You may not alter or remove any copyright or other notice from copies of the content on any Livetrend report.

If you have further needs, please contact us via chat.