



WOMENSWEAR
FASHION SHOWS
COPENHAGEN
SS 2025
**COLORS &
TEXTILES**



LIVETREND

INTRODUCTION COPENHAGEN SS25



Domino Tan19.jpg

Royal Danish Academy 2.jpg

Baum & Pferdgarten 17.jpg

backstage6.png



FASHION SHOWS

Tender neutrals meet hints of boldness.

At the SS25 Copenhagen Fashion Week, the color palette was dominated by light naturals, creating a serene and elegant foundation. These neutral tones were given depth and personality through the use of varied textures, imperfections, and sheer effects, adding a unique character to each piece. Pastel shades, especially in blues and minty hues, infused the collection with a subtle vitality. Bold monochrome ensembles stood out amidst the soft haze of neutrals, offering a striking contrast. Overall, the focus was on plains, allowing textures and sheer fabrics to take center stage. Sporty block stripes and faded or speckled prints introduced a dynamic element, while playful touches came in the form of cheetah prints and abstract art-inspired designs. Complementing the sheers were openworks and knits, which added dreamy, ethereal hues. Denim and leather were prominently featured, celebrated for their timelessness and versatility. These classic materials grounded the collections to enhance their enduring appeal. Overall, the SS25 shows in Copenhagen were a harmonious blend of subtlety and boldness, where textures and prints added life to a neutral base.

This report is based on the SS25 Copenhagen Fashion Shows.

Find the relating icons & stamps on the last slide.

[ACCESS ALL IMAGES
CLICKING HERE](#)



WOMENSWEAR
COPENHAGEN
TOP COLORS



LIVETREND

COPENHAGEN KEY COLORS

SS25 NEUTRAL PALETTES

BIG TREND



skall studio2.png



Domino Tan9.jpg



lovechild



Gestuz 13.jpg



Aeron2.jpg



tg botanical5.png



Herskind 8.jpg

COPENHAGEN KEY COLORS

SS25 AIRY BLUES

STABLE TREND



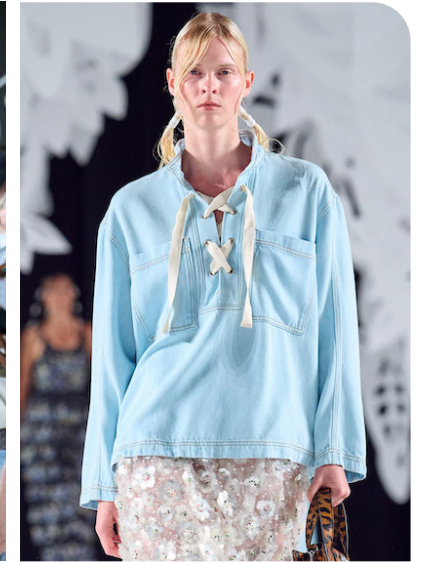
Bonnetje



operasport



Forza -2.jpg



Munthe 20.jpg



The Garment15.jpg



stine goya5.png



Won Hundred-5.jpg

COPENHAGEN KEY COLORS

SS25 MINTY HUES

EARLY SIGN



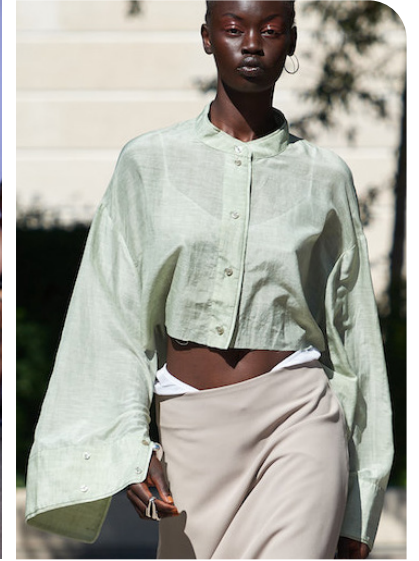
Sinead o Dwyer7.jpg



rabens saloner



Herskind 9.jpg



Lovechild3.jpg



caro editions



swedish school of textile



The Garment12.jpg

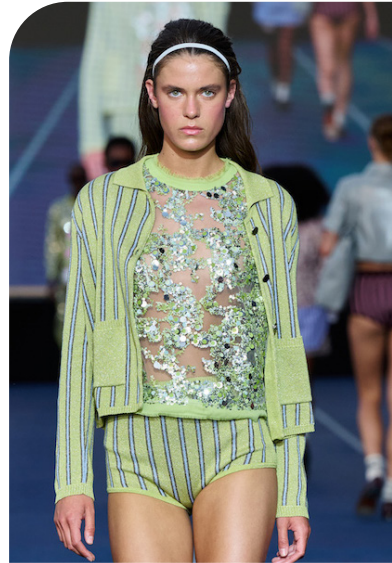
COPENHAGEN KEY COLORS

SS25 BOLD MONOCHROMES

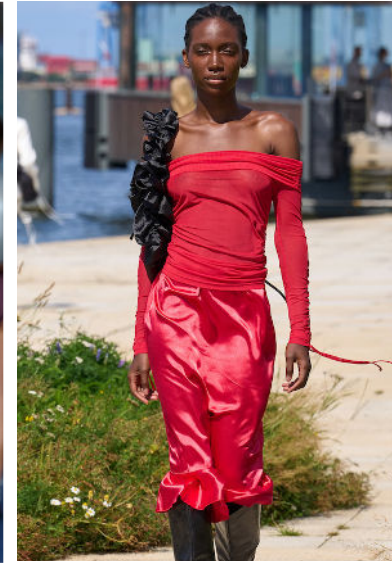
EDGY TREND



Forza -5.jpg



Baum & Pferdgarten 16.jpg



Operasport12.jpg



Forza -1.jpg



skovgaard



rabens saloner



Rotate15.jpg



WOMENSWEAR
COPENHAGEN
TOP
PATTERNS



LIVETREND

COPENHAGEN KEY PATTERNS

SS25 SPORTING STRIPES

BIG TREND



Operasport10.jpg



Stamm5.jpg



stem



Baum & Pferdgarten 17.jpg



Baum & Pferdgarten 9.jpg



Marimekko -5.jpg



Vibskov 4.jpg

COPENHAGEN KEY PATTERNS

SS25 STAINED & FADED

BIG TREND



Joao Marashin -15.jpg



Gestuz 11.jpg



Joao Marashin -14.jpg



kjobenhavn-s25-007.jpg



Domino Tan13.jpg



Gestuz 18.jpg



rabens saloner

COPENHAGEN KEY PATTERNS

SS25 ANIMAL FEVER

SAFE TREND



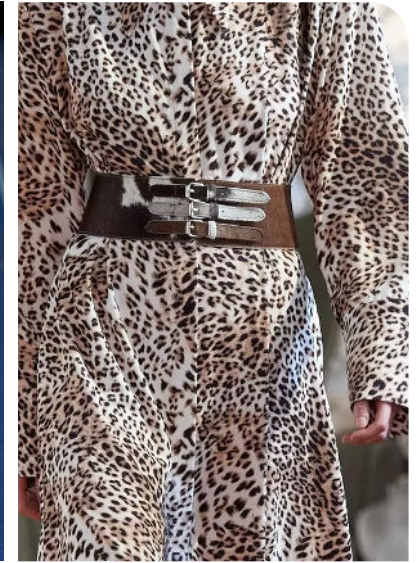
Gestuz 3.jpg



caro editinos



Baum & Pferdgarten 18.jpg



gestuz.jpg.webp



birrot



Gestuz 23.jpg



rabens saloner

COPENHAGEN KEY PATTERNS

SS25 ABSTRACT ART

STABLE TREND



Marimekko -2.jpg



backstage4.png



caro editions



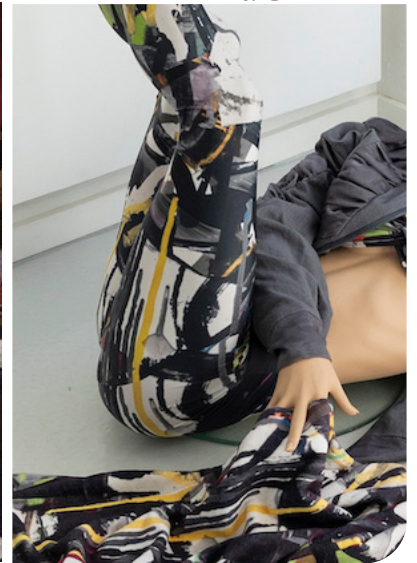
Vibskov 1.jpg



swedish school of textiles



stine goya1.png



skovgaard



WOMENSWEAR
COPENHAGEN
TEXTILES



LIVETREND

COPENHAGEN KEY TEXTILES

SS25 SUPER SHEERS

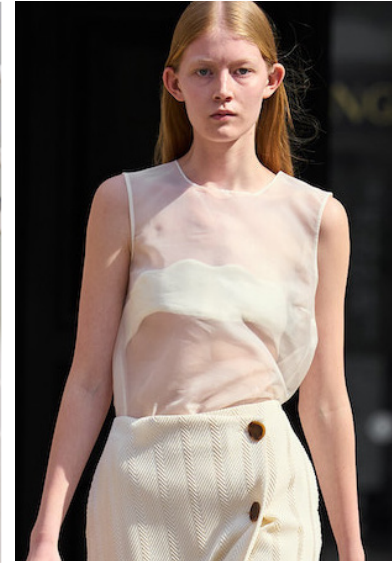
STABLE TREND



bonnetje



The Garment3.jpg



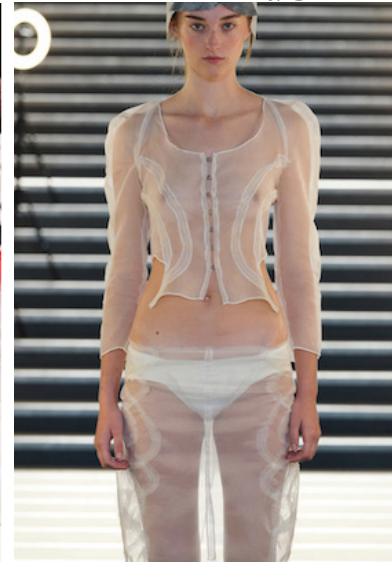
Domino Tan11.jpg



roege hove 6.jpg



Vibskov 2.jpg



hansdottir



Rotate9.jpg

COPENHAGEN KEY TEXTILES

SS25 DENIM DAYS

STABLE TREND



Baum & Pferdgarten 19.jpg



skall studio3.png



Marimekko -4.jpg



Sinead o Dwyer4.jpg



rabens saloner



Gestuz 8.jpg



Won Hundred-3.jpg

COPENHAGEN KEY TEXTILES

SS25 SHEER KNITS

STABLE TREND



Baum & Pferdgarten 19.jpg



Munthe 13.jpg



Lovechild6.jpg



tg botanical5.png



Rotate13.jpg



Won Hundred-6.jpg



Aeron3.jpg

COPENHAGEN KEY TEXTILES

SS25 TACTILITY & TEXTURE

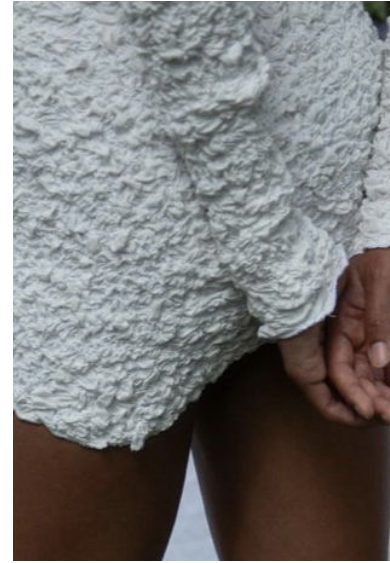
SAFE TREND



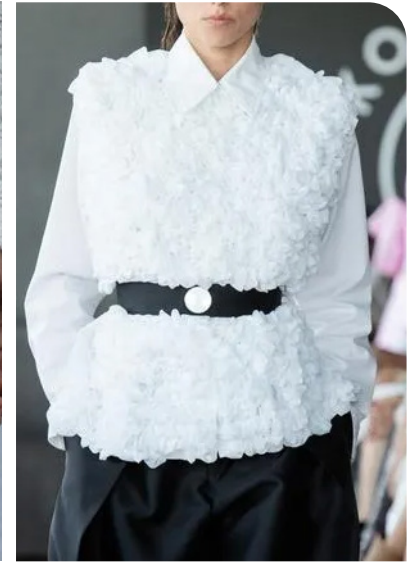
backstage2.png



munthe1.png



tg botanical9.png



forza



kjbenhavn



stem



forza

COPENHAGEN KEY TEXTILES

SS25 DREAMY OPENWORKS

STABLE TREND



rotate1.png



Aeron5.jpg



Munthe 2.jpg



skovgaards



swedish school of textiles



The Garment13.jpg



ukrainian Fashion Week10.jpg

COPENHAGEN KEY TEXTILES

SS25 LEATHER LOOKS

STABLE TREND



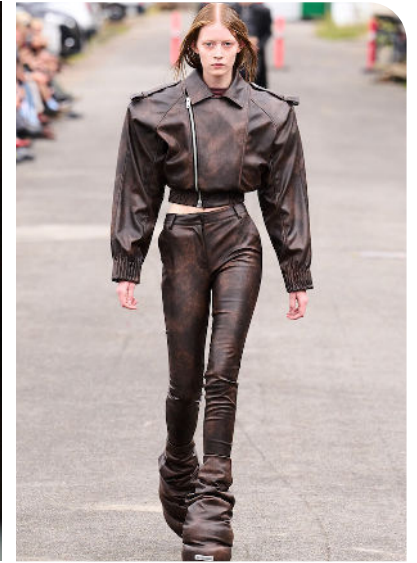
stine goja



Won Hundred-4.jpg



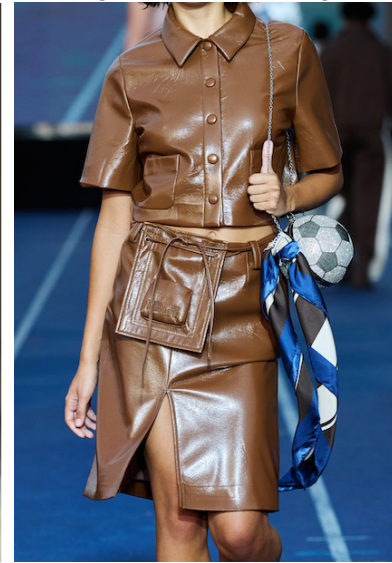
royal danish academy



kjbenhavn-s25-019.jpg



won hundred



Baum & Pferdgarten 5.jpg



Lovechild4.jpg

DATA SOURCES & ICONS

TREND GROWTH



MARKET

YEAR ON YEAR TREND GROWTH ON E-COMMERCE



SOCIAL MEDIA

YEAR ON YEAR TREND GROWTH ON INSTAGRAM



CONSUMER INTEREST

YEAR ON YEAR GROWTH OF ONLINE SEARCH VOLUMES



FASHION SHOWS

YEAR ON YEAR TREND GROWTH ON FASHION SHOWS

TREND BEHAVIOR

EDGY TREND

weak signal of a potential micro trend with very high risk

EARLY SIGN

emerging trend with growing perspective but higher risk

SAFE TREND

announced trend with growing perspective and safe risk

BIG TREND

trend with a big magnitude due to high commercial potential and quick adaption

STABLE TREND

trend that is already present in the market with flat growth

LAST CALL

trend with decreasing perspective but still having business potential

TREND MAGNITUDE



MANIFEST

AN ICONIC PRODUCT THAT IS A STABLE TREND OF LARGE MAGNITUDE WITH CONFIRMED COMMERCIAL SUCCESS



INVEST

A CORE PRODUCT REPRESENTING A STEADILY GROWING TREND OF MODERATE MAGNITUDE WITH COMMERCIAL POTENTIAL



TEST

A STATEMENT PRODUCT WITH GROWING PERSPECTIVE BUT SMALLER MAGNITUDE AND HIGHER RISK



DATA TO DRIVE

01 CREATIVITY

02 STRATEGY

03 SUSTAINABILITY



LIVETREND

THANK YOU!

You may not copy, reproduce, distribute, publish, display, perform, modify, create derivative works, transmit, or in any way exploit any such content, nor may you distribute any part of this content over any network, sell or offer it for sale, or use such content to construct any kind of database. You may not alter or remove any copyright or other notice from copies of the content on any Livetrend report.

If you have further needs, please contact us via chat or at barbara@livetrend.co