



**WOMENSWEAR**  
**RESORT 2025**  
**FASHION SHOWS**  
**MUST-HAVE**  
**TEXTILES**  
**& PATTERNS**



LIVETREND

# RESORT 2025 TEXTILES & PRINTS INTRODUCTION



CHloe14.jpg



Christopher Esber 12.jpg



gucci6.jpg



Nili Lotan3.jpg



## FASHION SHOWS

### Playful Classics & Softer Notions.

For Resort 2025, fabrics and prints are characterized by a blend of eccentric glamour, playful classics and a sense of softness. This season explores a rather timeless but rebellious taste in its materials and patterns. Leather, known for its enduring appeal, is paired with animal prints and furry textures to create a bold and fashion-forward aesthetic. Simultaneously, the resort collections delve into some delicate fabrics such as lush satins, transparent openworks, and barely-there sheers, offering a softer, more romantic feel to the season. Fancy fur trims contribute to the elevated, ladylike notion that is increasingly influential in the industry and add a touch of luxury and sophistication. From plain yet curated textiles to statements via prints, Resort 2025 womenswear balances boldness with softness for a less loud but more classy feel. This harmonious combination defines the season, ensuring a daring yet versatile look.

*This report is based on data extracted from the Resort 2025 collections analyzed by AI.  
Find the related icons & stamps on the last slide*

[ACCESS ALL IMAGES  
CLICKING HERE](#)



# MUST-HAVE TEXTILES

For Resort 2025, fabrics are diverse and texturally rich, reflecting a blend of practicality and eccentric flair. Denim is a standout, widely popular across resort collections, offering a versatile and timeless appeal. Fuzzy textures emerge for an eccentric transitional look, adding a playful and cozy dimension to the ensembles. Sheer fabrics continue to be explored for layering, with a new emphasis on openworks that create a transparent, dreamy allure. Leather is commercially approved and seamlessly integrated across various categories, providing a sleek and edgy touch. Foiled and coated fabrics maintain the previous season's affinity for metallics and shine, bringing a futuristic and glamorous element to the mix. Details such as fringe and fancy fur trims play a major role, adding luxurious accents to the garments. This season's fabric choices blend classic materials with innovative textures and finishes, creating a dynamic and visually captivating range.

# RESORT 2025 TEXTILES

BIG TREND

## DENIM DRESSING



Victoria Beckham 3.jpg



Huishang Zhang 4.jpg



Diesel 8.jpg



Hellessy 8.jpg



Kallmeyer 6.jpg



Versace5.jpg



Filippa K 5.jpg



# RESORT 2025 TEXTILES

BIG TREND

## LEATHER LOOKS



Tove 3.jpg



YSL1.jpg



Colangelo 10.jpg



Lafayette 6.jpg



Sportmax 6.jpg



Ferragamo 5.jpg



Khaite 1.jpg

# RESORT 2025 TEXTILES

STABLE TREND

## LUSH SATINS



Cecile Bahnsen12.jpg



YSL8.jpg



Bluemarine5.jpg



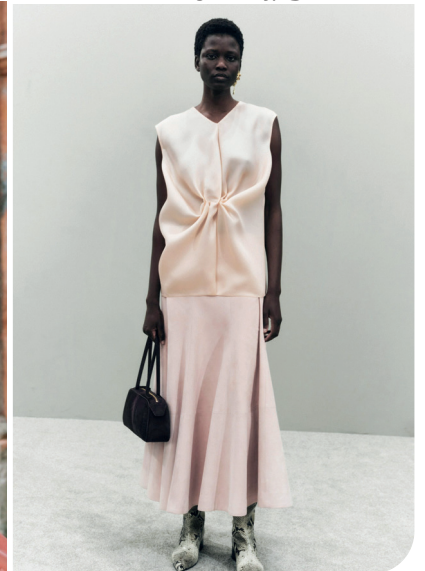
Kallmeyer 4.jpg



Galvan 1.jpg



Antonio Marras 4.jpg



Khaite 13.jpg

# RESORT 2025 TEXTILES

SAFE TREND

## TRANSPARENT LACES



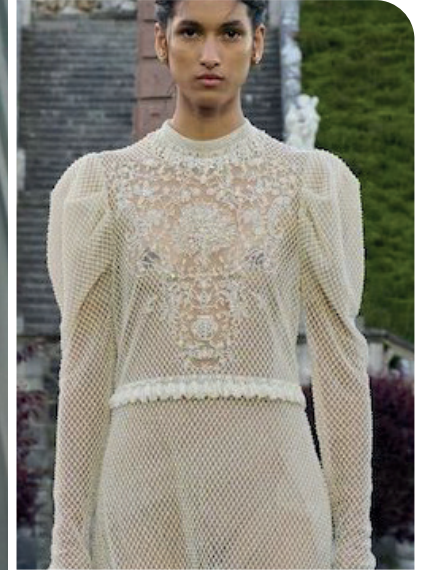
Ulla Johnson1.jpg



gucci4.jpg



Valentino17.jpeg



Dior 4.jpg



00008ubipmresort2025aedi,brnibandjydep



YSL2.jpg



Bluemarine8.jpg

# RESORT 2025 TEXTILES

STABLE TREND

## SENSITIVE SHEERS



Alberta Ferretti 4.jpg



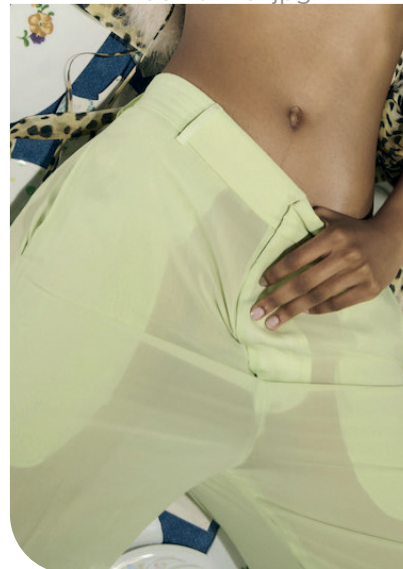
Bluemarine1.jpg



guci.jpg



Adeam -6.jpg



Bluemarine12.jpg



YSL4.jpg



Versace1.jpg



# RESORT 2025 TEXTILES

EDGY TREND

## LUREX & FOILS



Ganni 8.jpg



Safiyaa 7.jpg



Ulla Johnson4.jpg



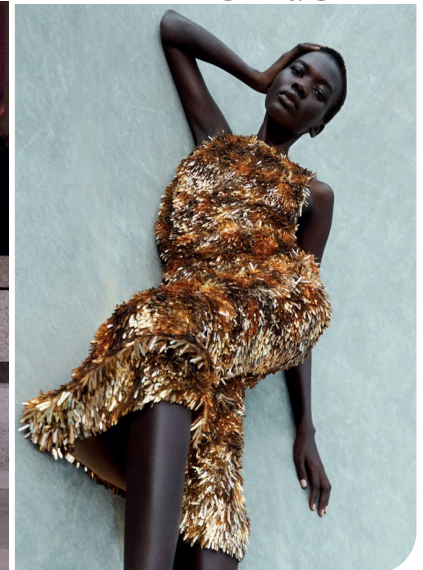
Bec & Bridge -8.jpg



Bec & Bridge -13.jpg



Balenciaga1.jpg



Ulla Johnson11.jpg

# RESORT 2025 TEXTILES

STABLE TREND

## CURATED FRINGE



Khaite 16.jpg



Tods4.jpg



Huishang Zhang 7.jpg



Alberta Ferretti 2.jpg



Oscar de la Renta10.jpg



CHloe3.jpg



Nanushka9.jpg

# RESORT 2025 TEXTILES

SAFE TREND

## BOUGIE FUR TRIMS



Staud11.jpeg



Valentino20.jpeg



LoveShackFancy 8.jpg



Valentino3.jpeg



Givenchy 3.jpg



Versace6.jpg



Bluemarine4.jpg



# MUST-HAVE PRINTS & PATTERNS

For Resort 2025 womenswear, prints are diverse and impactful. Animal prints and checks dominate, sparking a classic look that is still infused with a sense of youthful rebellion. The gritty and blurry effect continues to grow in popularity, adding a dynamic, edgy element to a wide range of prints. This effect can be seen across various patterns, providing a modern, artistic feel.

Florals are steadfast, presented in vintage botanical styles that evoke nostalgia and in virtual dark ground designs that offer a bold, dramatic flair. These floral prints cater to both classic and avant-garde tastes, ensuring versatility. Polka dots are still present, though they suggest a last call, signaling a potential shift in trend focus. Overall, Resort 2025's womenswear prints blend classic motifs with contemporary techniques, ensuring a mix of tradition and innovation.

# RESORT 2025 PRINTS & PATTERNS

BIG TREND

ALL ANIMAL



Givenchy 1.jpg



Zimmermann 5.jpg



Chloe6.jpg



Versace8.jpg



LaPointe 1.jpg



Versace8.jpg



Isabel Marant 7.jpg



# RESORT 2025 PRINTS & PATTERNS

BIG TREND

## HERITAGE CHECKS



Dior 12.jpg



Hellessy 9.jpg



gucci1.jpg



R13 10.jpg



Burberry 3.jpg



Rabanne 7.jpg



Coach 5.jpeg



# RESORT 2025 PRINTS & PATTERNS

STABLE TREND

## ABSTRACT BLURRED



Ulla Johnson9.jpg



Bec & Bridge -2.jpg



Lafayette 7.jpg



Stella McCartney 21.jpeg



Victoria Beckham 10.jpg



Galvan 5.jpg



Alejandra 7.jpg



# RESORT 2025 PRINTS & PATTERNS

SAFE TREND

## BOTANICA



Stella McCartney 8.jpeg



Antonio Marras 7.jpg



Valli 12.jpg



Magda Butrym1.jpg



Bluemarine9.jpg



Oscar de la Renta6.jpg



No 216.jpg





# RESORT 2025 PRINTS & PATTERNS

SAFE TREND

## NIGHTSHADE GARDENS



gucci3.jpg



Phillip Lim 6.jpg



Coperni 2.jpg



CHloe4.jpg



717226



Colangelo 6.jpg



Ulla Johnson2.jpg



# RESORT 2025 PRINTS & PATTERNS

STABLE TREND

ON THE DOT



Vuitton 8.jpg



Hellessy 2.jpg



Zimmermann 14.jpg



Cecile Bahnsen8.jpg



Zimmermann 3.jpg



valentino



Antonio Marras 5.jpg



# DATA SOURCES & ICONS

## TREND GROWTH



### MARKET

YEAR ON YEAR TREND GROWTH ON E-COMMERCE



### SOCIAL MEDIA

YEAR ON YEAR TREND GROWTH ON INSTAGRAM



### CONSUMER INTEREST

YEAR ON YEAR GROWTH OF ONLINE SEARCH VOLUMES



### FASHION SHOWS

YEAR ON YEAR TREND GROWTH ON FASHION SHOWS

## TREND BEHAVIOR

### EDGY TREND

weak signal of a potential micro trend with very high risk

### EARLY SIGN

emerging trend with growing perspective but higher risk

### SAFE TREND

announced trend with growing perspective and safe risk

### BIG TREND

trend with a big magnitude due to high commercial potential and quick adaption

### STABLE TREND

trend that is already present in the market with flat growth

### LAST CALL

trend with decreasing perspective but still having business potential

## TREND MAGNITUDE



### MANIFEST

AN ICONIC PRODUCT THAT IS A STABLE TREND OF LARGE MAGNITUDE WITH CONFIRMED COMMERCIAL SUCCESS



### INVEST

A CORE PRODUCT REPRESENTING A STEADILY GROWING TREND OF MODERATE MAGNITUDE WITH COMMERCIAL POTENTIAL



### TEST

A STATEMENT PRODUCT WITH GROWING PERSPECTIVE BUT SMALLER MAGNITUDE AND HIGHER RISK



## DATA TO DRIVE

01 CREATIVITY

02 STRATEGY

03 SUSTAINABILITY



LIVETREND

# THANK YOU!

You may not copy, reproduce, distribute, publish, display, perform, modify, create derivative works, transmit, or in any way exploit any such content, nor may you distribute any part of this content over any network, sell or offer it for sale, or use such content to construct any kind of database. You may not alter or remove any copyright or other notice from copies of the content on any Livetrend report.

**If you have further needs, please contact us via chat.**