



**WOMENSWEAR**  
**FW 2025**  
**FORECASTING**  
**DENIM**  
**KEY ITEMS**



LIVETREND

# DENIM FW25 INTRODUCTION



paris streetstyle



gucci



streetstyle



streetstyle



## FORECAST

### Casual Fits meet Sophisticated Finishes.

For FW 25/26, womenswear denim pieces blend casual fits with sophisticated outlines. Boyfriend jeans feature casually rounded legs or folded hems, offering a relaxed yet stylish look. Soft bootcuts take a straighter approach compared to the previous 2010s flare, while skinny jeans from the same era make a notable comeback. Wide-leg jeans present sartorial darted options, while the booming baggy jeans retains a more worn-out authenticity for fashion-forward markets. Stand-out pieces include duo-tones and all-over micro glitters. Jean jackets see raw and refined trucker styles coexisting with cabin and workwear pieces. Maxi skirts take over from midis, offering dramatic length, while the return of the mini skirt comes in frilled and bubbled fancy versions. This season's denim collection combines timeless elements with modern twists, ensuring a versatile and fashionable wardrobe for women, blending practicality with a chic, contemporary edge.

*This forecasting report is realized crossreferencing LIVETREND data from several sources to empower the expertise of our Trend Analysts to forecast the trends with concrete and quantitative information. Find the related data sources and icons on the last slides.*

[ACCESS ALL IMAGES  
CLICKING HERE](#)

# DENIM FW25 SPOTLIGHT



MANIFEST



INVEST



TEST

2010 SLIM



zara-56.jpg

SOFT BOOTCUT



teurn studio -5.png

CASUAL ROUND



ryimcbstylewecvntgwbwtkltpg

SLOUCHY FOLDED



masonmagbmedlmwshpats5podespg

CABIN COAT



miumiu14.avif

VOLUME MINI



almeida12.jpg

***This Trend Spotlight proposes the must-have products of the season to build the right assortment.***

This selection is made to ensure that you have the right collection staples, invest in the right core pieces and test the right trendy items within your product range.

Find the full list of seasonal core items on the next slides.

BIG TREND

# FW25 CASUALLY ROUNDED



streetstyle-20.jpg



eytys -7.png



armarium -5.png



margaret howell-3.png



rory william docherty



@Tibi.jpg



zara-41.jpg



BIG TREND

FW25 **SOFT BOOTCUT**



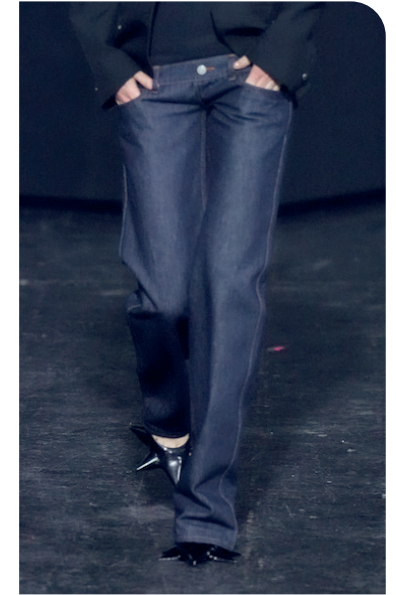
zara-55.jpg



acne studio1.jpg



streetstyle-69.jpg



coperni 8.jpg



coperni



teurn studio -5.png



eytys -10.png



SAFE TREND

# FW25 FOLDED BOYFRIEND



tibi



molly goddard3.png



streetstyle-71.jpg



streetstyle-3.jpg



streetstyle-61.jpg



maison margiela



@uniformdisplay-9.png

SAFE TREND

# FW25 WORN-OUT BAGGY



@wonhundred\_official 2.jpg



eckhaus-latta.jpg



acne studio6.jpg



streetstyle-15.jpg



streetstyle-11.jpg



Jaded



margiela3.png

STABLE TREND

# FW25 DARTED WIDE LEG



zimmermann



stella mccartney



miumiu4.avif



rowenrose 11.png



Bezaseref, Pinterest.jpeg



zara-38.jpg



Plan C -8.png





STABLE TREND

FW25 2010s SLIM



MiuMiu 14.jpg



Jaded2.jpg.webp



streetstyle-85.jpg



streetstyle-53.jpg



retrofete.jpg



zara-56.jpg



zimmermann

EDGY TREND

# FW25 ALL-OVER SPARKLE



etro-.jpg



stella-mccartney-.jpg



acne studio5.jpg



des phemmes-7.png



streetstyle-42.jpg



versace2.png



zara-36.jpg

EDGY TREND

FW25 **DUO-TONES**



esber.webp



miumi10.avif



nensi dojaka



maxwell



gauchere6.jpg



lutz hulle2.jpg



elisabetta-franchi-.jpg



SAFE TREND

# FW25 MATCHING PAIRINGS



streetstyle-12.jpg



Schiaparelli.jpg



streetstyle-59.jpg



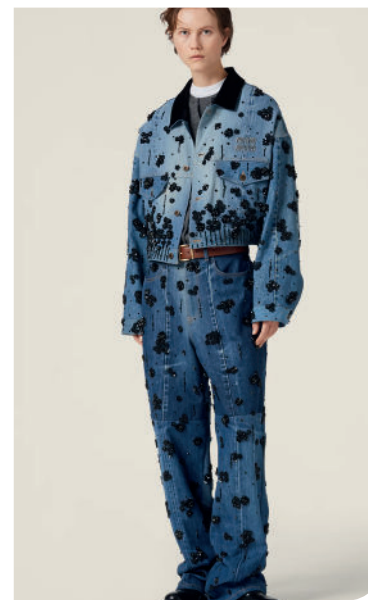
lovechild-.jpg



streetstyle-14.jpg



vcitoria beckham



miumiu6.avif



SAFE TREND

FW25 **MAXI SKIRT**



ALC -9.png



vaquera



ixos



marine serre -2.png



wconcept.jpeg



laurence basse2.png



streetstyle-83.jpg

EARLY SIGN

# FW25 FANCY VOLUME MINI



victoria thomas



aknvas -1.png



urban outfitters.webp



miumiu2.avif



jaded london.jpeg



almeida12.jpg



romeo-hunte-.jpg



BIG TREND

# FW25 CABIN JACKETS



streetstyle-13.jpg



miumiu



gestuz.jpg



sea ny -1.png



Plan C -8.png



selfportrait 13.png



freepeople1.webp



SAFE TREND

# FW25 REFINED RAW TRUCKER



victoria beckham



versace-.jpg



coperni 6.jpg



loro piana -12.png



wickstead



Ullajohnson, website.jpg



max-mara.jpg

DENIM

WOMENSWEAR

FORECASTING

FALL/WINTER 2025





EDGY TREND

# FW25 ELEGANT LONG COAT



versace12.jpg



streetstyle-26.jpg



streetstyle.jpeg



retrolinen.jpeg



filippa k



dior 7.jpg



streetstyle-41.jpg

EDGY TREND

# FW25 NEW DENIM JACKETS



retrofete3.jpg

## XL VINTAGE



zimmermann-.jpg



etsy.jpeg

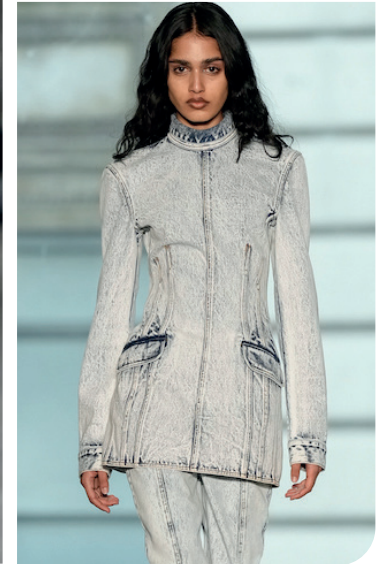


KNWLS

## SLEEK SLIMLINE



tory-burch-.jpg



aknvas10.jpg



# DATA SOURCES & ICONS

## TREND GROWTH



### MARKET

YEAR ON YEAR TREND GROWTH ON E-COMMERCE



### SOCIAL MEDIA

YEAR ON YEAR TREND GROWTH ON INSTAGRAM



### CONSUMER INTEREST

YEAR ON YEAR GROWTH OF ONLINE SEARCH VOLUMES



### FASHION SHOWS

YEAR ON YEAR TREND GROWTH ON FASHION SHOWS

## TREND BEHAVIOR

### EDGY TREND

weak signal of a potential micro trend with very high risk

### EARLY SIGN

emerging trend with growing perspective but higher risk

### SAFE TREND

announced trend with growing perspective and safe risk

### BIG TREND

trend with a big magnitude due to high commercial potential and quick adaption

### STABLE TREND

trend that is already present in the market with flat growth

### LAST CALL

trend with decreasing perspective but still having business potential

## TREND MAGNITUDE



### MANIFEST

AN ICONIC PRODUCT THAT IS A STABLE TREND OF LARGE MAGNITUDE WITH CONFIRMED COMMERCIAL SUCCESS



### INVEST

A CORE PRODUCT REPRESENTING A STEADILY GROWING TREND OF MODERATE MAGNITUDE WITH COMMERCIAL POTENTIAL



### TEST

A STATEMENT PRODUCT WITH GROWING PERSPECTIVE BUT SMALLER MAGNITUDE AND HIGHER RISK



## DATA TO DRIVE

01 CREATIVITY

02 STRATEGY

03 SUSTAINABILITY



LIVETREND

# THANK YOU!

You may not copy, reproduce, distribute, publish, display, perform, modify, create derivative works, transmit, or in any way exploit any such content, nor may you distribute any part of this content over any network, sell or offer it for sale, or use such content to construct any kind of database. You may not alter or remove any copyright or other notice from copies of the content on any Livetrend report.

**If you have further needs, please contact us via chat.**