



WOMENSWEAR
FW 2025
FORECASTING
SKIRTS
KEY ITEMS



LIVETREND

SKIRTS FW25 INTRODUCTION



paris spagnoli



ester manas



shu shu tong



david koma



FORECAST

Playful Elegance.

For FW25 womenswear, skirts showcase a diverse range of styles that move away from previous seasons of bodycon silhouettes with increasing volumes. While crisp pencil silhouettes remain in sartorial wools and chic leather with a sense of rigidity, options in daring sheers at a tender touch. However, recent fuller volumes are taking the spotlight. Bohemian maxi skirts, bubble styles, frilled tutus, and classic ladylike A-lines shift the focus away from super sexy and slinky silhouettes. On that note, the mini skirt endures as a tutu, while the standout midi lengths pleated silhouettes gain prominence. Slinky pieces feature longline skirts and slip skirts and add gentle fluidity. Similarly dynamic, the taste for asymmetric hemlines prevails and creates cascading effects, elevating everyday wear. FW25 skirts blend classic and contemporary elements, offering a versatile yet sophisticated selection.

This forecasting report is realized crossreferencing LIVETREND data from several sources to empower the expertise of our Trend Analysts to forecast the trends with concrete and quantitative information. Find the related data sources and icons on the last slides.

[ACCESS ALL IMAGES
CLICKING HERE](#)

TOP MATERIALS SKIRTS FW25



TEST



almeida

THE TULLE & LACE



hannah schonberg

EDGY TREND

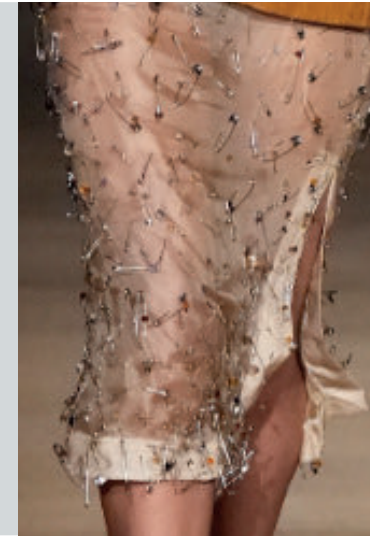


TEST



rabbane

THE EMBELLISHED



dauphinettes_2.png

SAFE TREND



INVEST



tods

THE LEATHER LOOK



msgm

SAFE TREND



TEST



sandy liang3.png


THE FUZZY TEXTURE




no21

EDGY TREND

TOP DETAILS SKIRTS FW25

 **INVEST**




christian dior


THE ASYMMETRY



coperni resort 25


EARLY SIGN

 **TEST**




lutz huelle


THE BUBBLE HEMS



@love_wanttimeto_pausell.jpg

SAFE TREND

 **TEST**




streetstyle---7.jpg


THE FRILLS



shushu

EARLY SIGN

 **MANIFEST**



streetstyle paris 16 copy.jpg

THE FLAT PLEATS



streetstyle

STABLE TREND

SKIRTS FW25 SPOTLIGHT



MANIFEST



INVEST



TEST

SARTORIAL



Toteme - 2.png

PLEATS



maje 9.png

FULL SKIRT



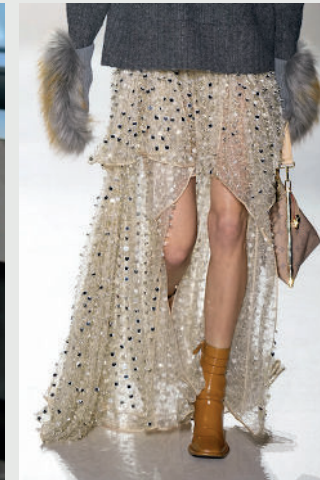
@emilisindlev5.png

BUBBLE



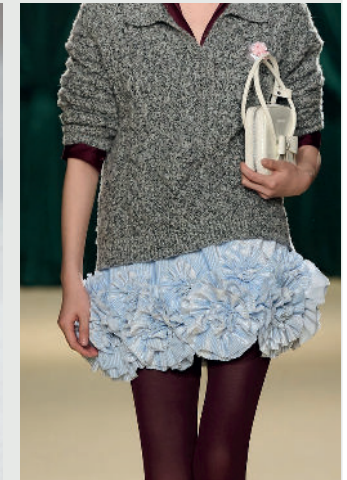
AARON ESH.png

ASYMMETRIC



louis vuitton 11.jpg

FRILLED TUTU



shushu tong -19.jpg

This Trend Spotlight proposes the must-have products of the season to build the right assortment.

This selection is made to ensure that you have the right collection staples, invest in the right core pieces and test the right trendy items within your product range.

Find the full list of seasonal core items on the next slides.

BIG TREND

FW25 MODERNIST PLEATS



Streetstyle paris 13 copy.jpg



@16arlington 1.jpeg



sandy liang



@uniformdisplay4.png



assets vogue.jpeg



ZARA15.jpg



@uniformdisplay20.png



BIG TREND

FW25 SARTORIAL PENCIL



ZARA4.jpg



msgm2.png



miu-miu.jpg



prada



shushu tong -7.jpg



NY Streetsyle_11.jpg



Toteme - 2.png



STABLE TREND

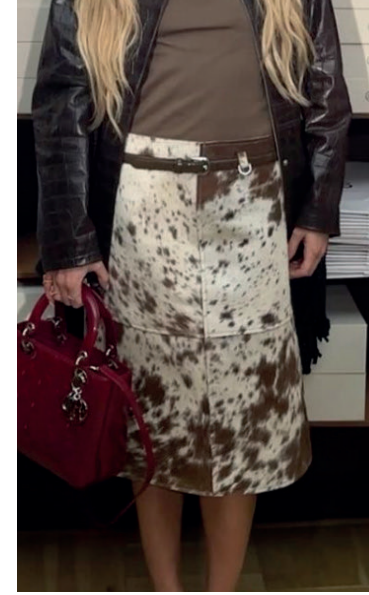
FW25 **LUXE LEATHER**



stella mccartney -4.jpg



giada.png



@emilisindlev2.png



wickstead.jpg



mm6



bally 1.jpg



streetstyle21.jpg

STABLE TREND

FW25 ASYMMETRIC EVERYDAY



[louis vuitton 11.jpg](#)



[demeulemeester-.jpg](#)



[urbanoutfitters10.webp](#)



[junna5.png](#)



[@uniformdisplay10.png](#)



[bottega veneta -5.png](#)



[ester manas14.jpg](#)

STABLE TREND

FW25 SLINKY LONGLINES



Staudt3.png



hellussy.jpg



acne-.jpg



fendi8.png



prabal-gurung-.jpg



oude waag-7.jpg



@hannahschonberg10.png



STABLE TREND

FW25 FLARED A-LINE



shushu tong -9.jpg



@altuzarra6.png



lacoste-.jpg



Brandon-maxwell.webp



tosi-po-f24-010-11271470Kopie.jpg



@emilisindlev5.png



streetstyle22.jpg

STABLE TREND

FW25 SHEER LAYERS



@lichi_brand.jpg



rabanne.jpg



huishan-zhang-.jpg



n-21-.jpg



Streetstyle 28 copy.jpg



16Arlington-6.jpg



philip lim

SKIRTS

WOMENSWEAR

FORECASTING

FALL/WINTER 2025



SAFE TREND

FW25 BUBBLE STYLES



ming ma5.jpeg



gimaguasé.jpeg



MiuMiu 9.jpg



marine serre -4.jpg



Christian Dior.png



lutz-huelle-clp-f24-068.jpg



coperni-resort-2025.webp

SKIRTS

WOMENSWEAR

FORECASTING

FALL/WINTER 2025



EDGY TREND

FW25 **FRILL TUTUS**



streetstyle---7.jpg



shushu tong -19.jpg



facefirst.jpeg



@tannerfletcher8.png



VALENTINO.jpeg



hodakova -5.png



@hannahschonberg6.png

SKIRTS

WOMENSWEAR

FORECASTING

FALL/WINTER 2025



EDGY TREND

FW25 MICRO SKIRTS & SKORTS



streetstyle paris 26 copy.jpg



n21



Streetstyle Paris 29 copy.jpg



freepeople10.webp



baum-und-pferdgarten_.jpg



@nicoly de vasconcelos.jpeg



no21_2.jpg

SKIRTS

WOMENSWEAR

FORECASTING

FALL/WINTER 2025



DATA SOURCES & ICONS

TREND GROWTH



MARKET

YEAR ON YEAR TREND GROWTH ON E-COMMERCE



SOCIAL MEDIA

YEAR ON YEAR TREND GROWTH ON INSTAGRAM



CONSUMER INTEREST

YEAR ON YEAR GROWTH OF ONLINE SEARCH VOLUMES



FASHION SHOWS

YEAR ON YEAR TREND GROWTH ON FASHION SHOWS

TREND BEHAVIOR

EDGY TREND

weak signal of a potential micro trend with very high risk

EARLY SIGN

emerging trend with growing perspective but higher risk

SAFE TREND

announced trend with growing perspective and safe risk

BIG TREND

trend with a big magnitude due to high commercial potential and quick adaption

STABLE TREND

trend that is already present in the market with flat growth

LAST CALL

trend with decreasing perspective but still having business potential

TREND MAGNITUDE



MANIFEST

AN ICONIC PRODUCT THAT IS A STABLE TREND OF LARGE MAGNITUDE WITH CONFIRMED COMMERCIAL SUCCESS



INVEST

A CORE PRODUCT REPRESENTING A STEADILY GROWING TREND OF MODERATE MAGNITUDE WITH COMMERCIAL POTENTIAL



TEST

A STATEMENT PRODUCT WITH GROWING PERSPECTIVE BUT SMALLER MAGNITUDE AND HIGHER RISK



DATA TO DRIVE

01 CREATIVITY

02 STRATEGY

03 SUSTAINABILITY



LIVETREND

THANK YOU!

You may not copy, reproduce, distribute, publish, display, perform, modify, create derivative works, transmit, or in any way exploit any such content, nor may you distribute any part of this content over any network, sell or offer it for sale, or use such content to construct any kind of database. You may not alter or remove any copyright or other notice from copies of the content on any Livetrend report.

If you have further needs, please contact us via chat.