



**WOMENSWEAR**  
FW 2024  
FASHION SHOWS  
**MUST-HAVE**  
**FOOTWEAR**



LIVETREND

# FW24 FOOTWEAR INTRODUCTION



eckhaus-latta-.jpg



gucci.jpg



luisa-spagnoli.jpg



retrofete.jpg



## FASHION SHOWS

**Innovated Heritage.** The FW24 fashion shows unveiled a fusion of heritage styles and modern innovations. For boots, a shift towards heritage designs exuded timeless sophistication, while biker styles and wide volumes remained. For flats, classic and preppy options remained popular, but were explored through a more contemporary, masculine or stylized lense. In heels, FW24's must-haves showcased a dynamic fusion of classic elegance and contemporary innovation, catering to the diverse tastes and preferences of fashion enthusiasts. Here pointy toes reigned with sleekness but more lady-like vintage designs moved in focus. Across all categories, playing with fuzzy textures, heritage shapes and details, exploring curved heels or adding bow and strap details proposed a repertoire of stylish details for the rather timeless silhouettes. FW24's must-have footwear showcased a diverse range of options for fashion enthusiasts and investment-driven clients.

*This forecasting report is based on Data extracted from more than 260 International fashion shows of NY, London, Milan and Paris with 42 000 products analyzed. The trends are organized by visibility (number of looks presenting the trend attribute). Find the relating icons & stamps on the last slide. They are organized by visibility.*

**ACCESS ALL IMAGES  
CLICKING HERE**





# MUST-HAVE BOOTS

The FW24 fashion shows unveiled a fusion of heritage styles and modern innovations. Boots showed a shift towards heritage designs in both flat and heeled options, exuding timeless sophistication. For biker boots, footwear embraced a more rustic aesthetic that felt more authentic and vintage. At the same time, wider volumes continued to be explored, particularly in pointy knee-height styles, adding a touch of drama and fashionable edge to ensembles. Thigh-high boots retained their bold allure, with fitted or the season's heritage silhouettes. Talking about fitted styles, sock boots injected a modern and futuristic flair, offering a sleek and streamlined look. A notable addition to FW24 boots were boho 2010-inspired lace-up pieces, evoking a sense of nostalgia with their vintage-inspired gypsy charm. Furry styles emerged as statement pieces, adding texture and personality and exploring a trendy seasonal material.

# FW24 **BOOTS**

**BIG TREND**

HERITAGE & RIDING STYLES



gucci-.jpg



gabriela-hearst-.jpg



ferretti.jpg



fendi-.jpg



chanel-.jpg



rachel allegra 2.png



tods.jpg



# FW24 **BOOTS**

STABLE TREND

OUTDOORS & BIKER



demeulemeester.jpg



double j3.png



valentino.jpg



Burberry-webp



miu-miu.jpg



versace.jpg



coach.jpg



# FW24 **BOOTS**

## SAFE TREND

## EXTRA WIDES



knwls.jpg



alaia -5.png



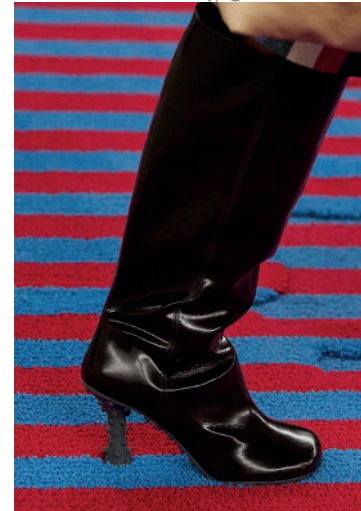
diesel-.jpg



schouler.jpg



retrofete.jpg



sunnei.jpg



acne-.jpg



# FW24 **BOOTS**

STABLE TREND

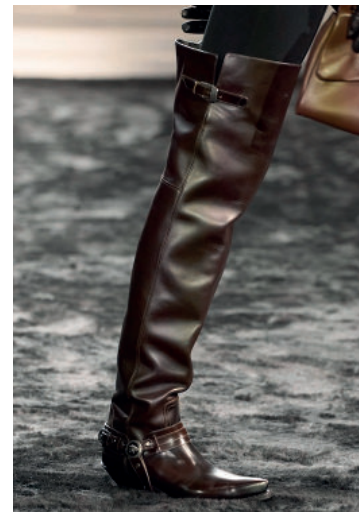
THIGH HIGH



ferragamo.jpg



gucci3.png



versace-.jpg



fendi.jpg



david-koma.jpg



fendi-.jpg



stella-mccartney.jpg

# FW24 **BOOTS**

## STABLE TREND

## SOCK STYLES



acne.jpg



christian weijnants -11.png



chanel.jpg



16arlington.jpg



rave-review-.jpg



christopher esber -16.png



anteprima.jpg



# FW24 **BOOTS**

## EDGY TREND



david-koma-.jpg



kim-shui.jpg



luar2.png



duran-lantink.jpg



coker-.jpg



knwls.jpg



shuting qiu 11.png



# FW24 **BOOTS**

EARLY SIGN

GYPSY 2010

SAFE TREND

CURVED HEEL



miu-miu-.jpg



knwls-.jpg



kronthaler-westwood-.jpg



knwls.jpg



iro 6.png



schiaparelli -18.png



# FW24 **BOOTS**

EARLY SIGN

MOB PYTHON

EARLY SIGN

FLAT SOCK



ulla-johnson-.jpg



retrofete.jpg



knwls-.jpg



carven.jpg



uma-wang-.jpg



giorgio-armani.jpg





# MUST-HAVE FLATS

The FW24 fashion shows showcased a variety of flat shoes, blending classic elegance with modern twists. Classic and preppy options remained popular, with a continuous spotlight on the Mary Jane style, particularly in heftier iterations that added a touch of contemporary genderlessness. On that note, the men's derby made a big appearance after being introduced the previous season, as a sophisticated and masculine choice. Loafers took on a more preppy vibe, featuring fringe and bow details for added charm. Ballet flats transitioned into more minimal monk options, embracing simplicity and versatility. Fuzzy styles emerged as a fashion favorite, adding texture and playfulness. Additionally, more strappy Mary Jane interpretations signaled an early trend for the season. Sneakers continued to be favored in retro options, aligning with the ongoing market craze for timeless footwear. More forward, sneakers with eye-catching 3D embellishments, increased in popularity and got creative with new romantic detail highlights.



# FW24 FLATS

SAFE TREND

MARY-JANE



miu-miu-.jpg



msgm-.jpg



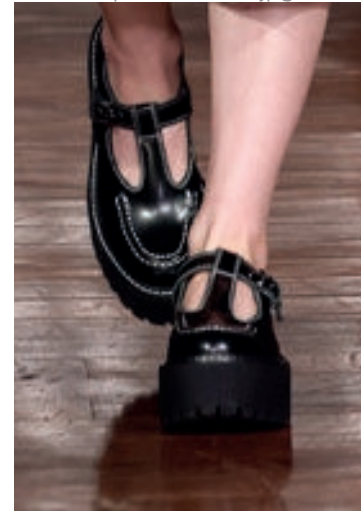
emporio-armani.jpg



bally 5.png



moschino.jpg



cult3.png



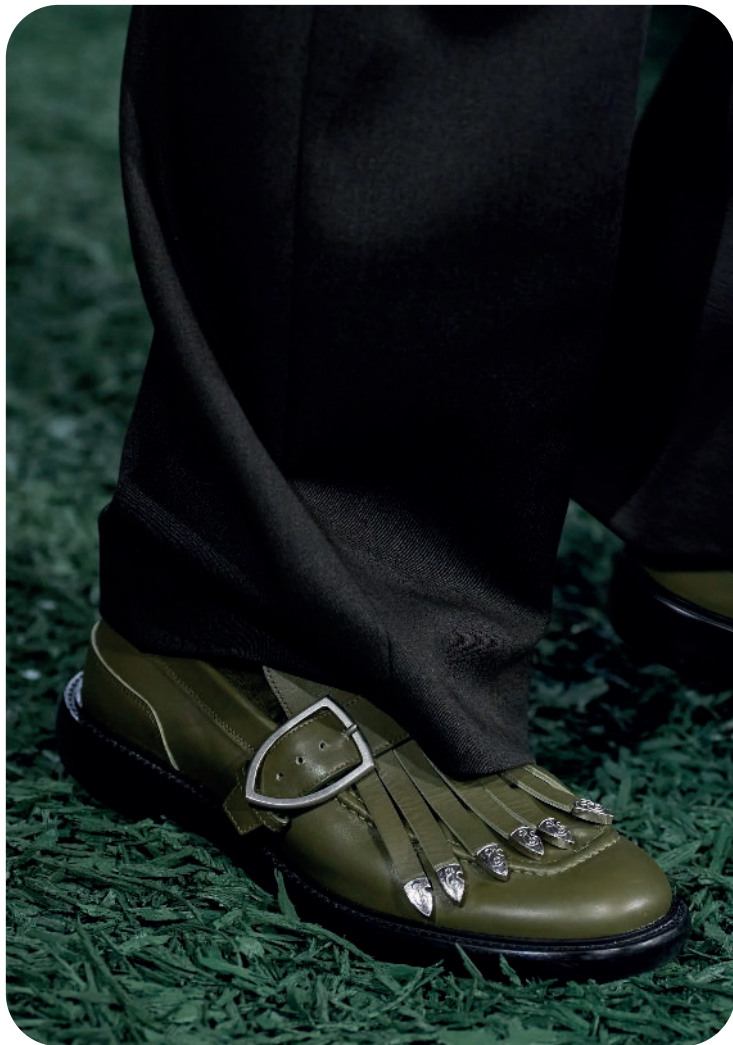
versace-.jpg



# FW24 FLATS

STABLE TREND

PREPPY LOAFER



Burberry.webp



gcds.jpg



wickstead.jpg



blumarine.jpg



maje 6.png



vivetta-.jpg



Theory -6.png



# FW24 FLATS

SAFE TREND

MEN'S DERBY



miumiu.webp



max-mara-.jpg



jason-wu.jpg



gcds-.jpg



iceberg-.jpg



antonio-marras-.jpg



sinead-.jpg



# FW24 FLATS

## SAFE TREND

## MINIMAL FLAT



bottega veneta 7.png



carven.jpg



fforme-.jpg



dawei-.jpg



versace-.jpg



6379 -2.png



ashlyn\_2.png



# FW24 FLATS

## EDGY TREND

## TENDER FUZZ



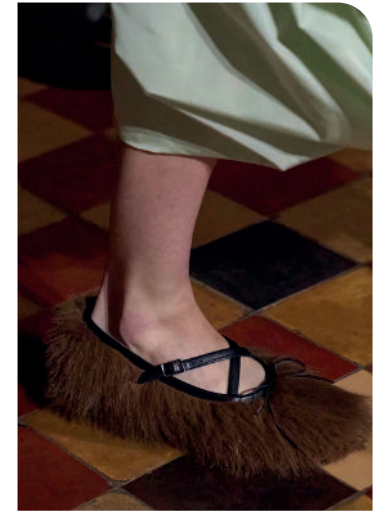
carven-.jpg



calcaterra-.jpg



Plan C -13.png



rocha-.jpg



nanushka8.png



etro -3.png



versace.jpg

# FW24 FLATS

SAFE TREND

STRAPPED IN

STABLE TREND

BALLERINA



chloe-.jpg



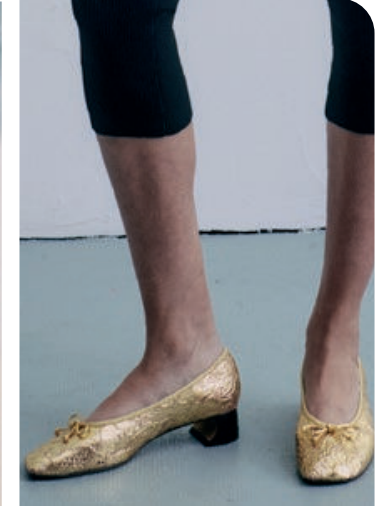
valli-clp-f24-056.jpg



cult2.png



malaika raiss1.png



philip lim\_10.png



marni1.png



# FW24 FLATS

## EDGY TREND



cecilie-bahnsen-.jpg

## 3D ADD-ON



collina-strada.jpg



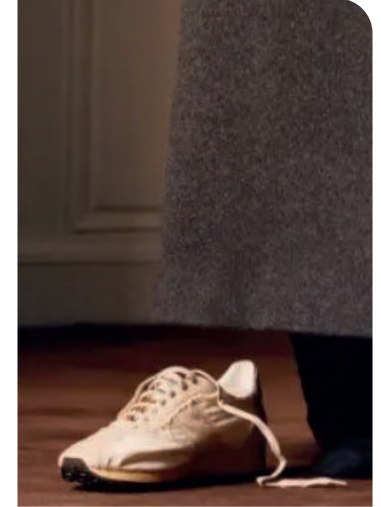
kei-ninomiya-.jpg

## STABLE TREND

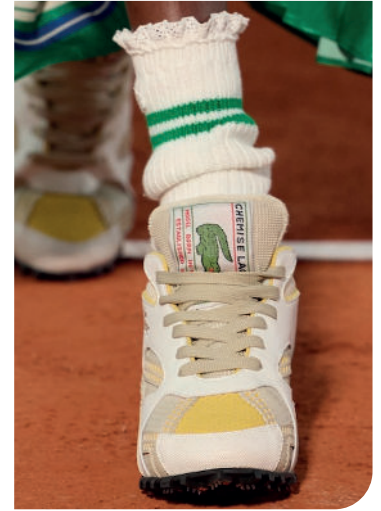


zomer-.jpg

## RETRO SPORT



The Row 5.png



lacoste-.jpg



# MUST-HAVE HEELS

In the FW24 fashion shows, must-have heels exuded a blend of classic sophistication and modern twists. Pointy styles continued to dominate, elongating the silhouette. Slingback heels emerged as a favorite here, stunning across all heel heights to add a touch of vintage charm. Talking pointy, the points were emphasized with almost ankle-height options across various designers, creating a sleek and sophisticated look. Mary Jane designs took on a sharper or more strappy aesthetic, providing a modern interpretation of a classic silhouette. There was an exploration of heritage-inspired loafers and derbies with heels, building upon a trend introduced the previous season. Strappy looks evolved into more T-strap and tied-in styles, moving beyond basic ankle straps for added visual interest. Fuzzy styles made a statement, adding texture and fun, while experimental details such as curved heels, cut-outs, and tie-ups emerged as fashion-forward features.



# FW24 HEELS

BIG TREND

LADYLIKE SLING BACK



jason-wu-.jpg



erdem.jpg



kors-.jpg



knwls.jpg



n-21-.jpg



herrera-.jpg



vivetta.jpg



# FW24 HEELS

## STABLE TREND



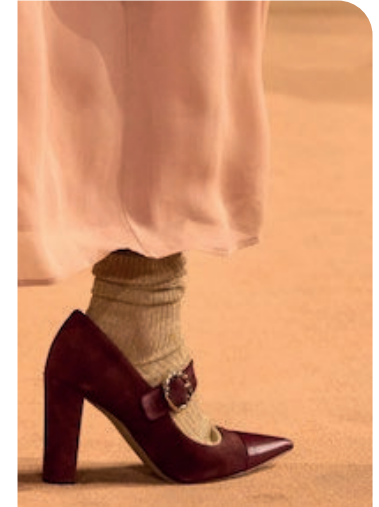
huishan-zhang.jpg



malloni1.png



vivetta-.jpg



ulla johnson 7.png



loewe.webp



miu-miu-.jpg



wickstead.jpg

## MODERN MARY-JANE



# FW24 HEELS

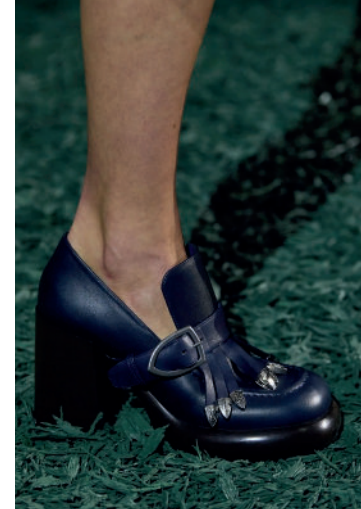
## SAFE TREND



gucci-.jpg



vuitton-.jpg



Burberry-.webp



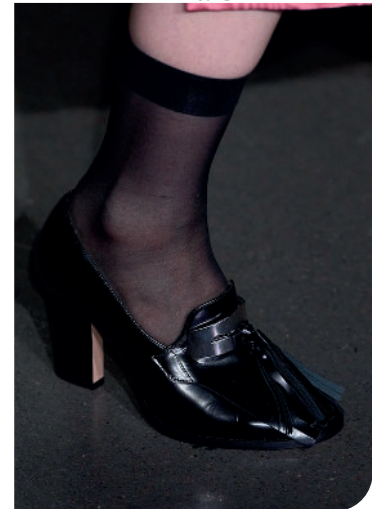
luar-.jpg



Theory -.png



max-mara-clp-f24-087.jpg



wickstead.jpg

## HEELED HERITAGE



# FW24 HEELS

## SAFE TREND

## STRAPPED-IN



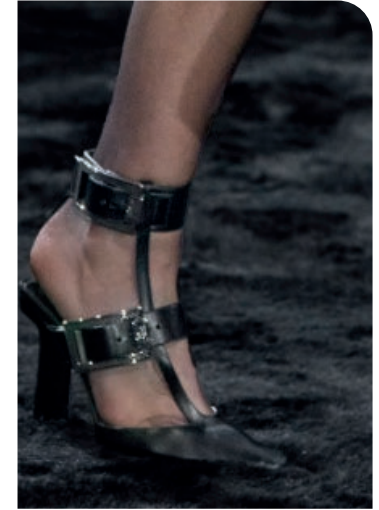
chloe.webp



ferragamo-.jpg



dolce-gabbana.jpg



versace 2.png



yuhan-wang-.jpg



yuhan-wang.jpg



iceberg-.jpg



# FW24 HEELS

SAFE TREND

HIGH-POINT/ ALMOST-ANKLE



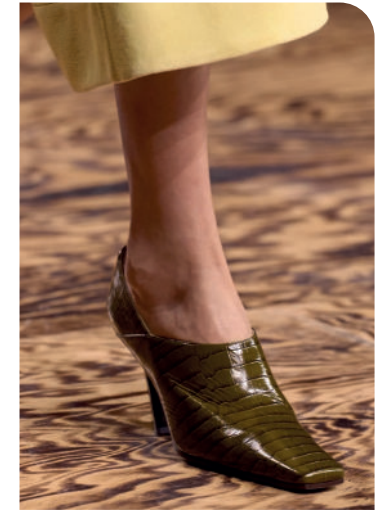
retrofete-.jpg



roksanda.jpg



diesel-.jpg



bottega veneta 21.png



rochas -4.png



etro -5.png



versace-.jpg



# FW24 HEELS

## EDGY TREND

## FUZZY HEELS



16arlington-.jpg



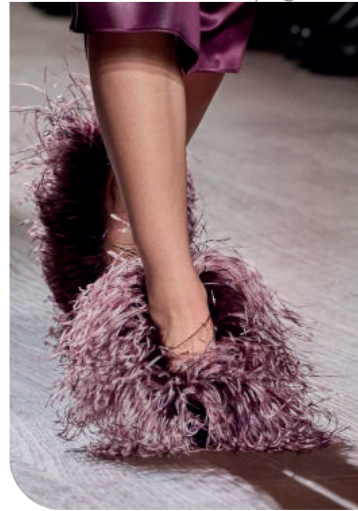
simone rocha 1.png



david-koma.jpg



batsheva-.jpg



ferragamo.jpg



mm6-.jpg



erdem.jpg



# FW24 HEELS

## EDGY TREND

## ON THE CURVE

## SAFE TREND

## VINTAGE LADY



tory-burch-.jpg



ferragamo.jpg



balmain-.jpg



blumarine.jpg



natasha-zinko-.jpg



kronthaler-westwood-.jpg



# FW24 HEELS

## EARLY SIGN

## CUT-OUT KITTEN

## EDGY TREND

## LACE-UP LOOKS



prada.jpg



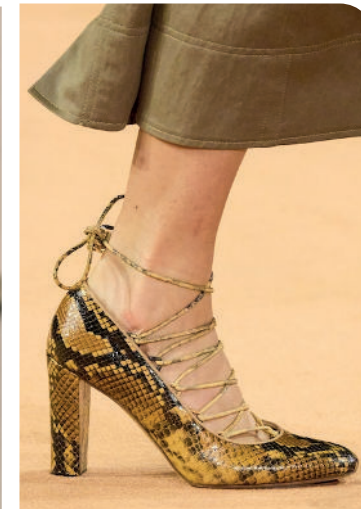
bottega veneta 4.png



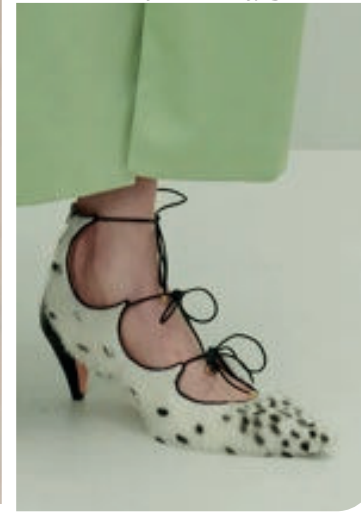
carven-.jpg



alaia -16.png



ulla-johnson-.jpg



rochas -25.png



# DATA SOURCES & ICONS

## TREND GROWTH



### MARKET

YEAR ON YEAR TREND  
GROWTH ON E-COMMERCE



### SOCIAL MEDIA

YEAR ON YEAR TREND  
GROWTH ON INSTAGRAM



### CONSUMER INTEREST

YEAR ON YEAR GROWTH OF  
ONLINE SEARCH VOLUMES



### FASHION SHOWS

YEAR ON YEAR TREND  
GROWTH ON FASHION SHOWS

## TREND BEHAVIOR

### EDGY TREND

weak signal of a potential micro  
trend with very high risk

### EARLY SIGN

emerging trend with growing  
perspective but higher risk

### SAFE TREND

announced trend with  
growing perspective and safe risk

### BIG TREND

trend with a big magnitude due to high  
commercial potential and quick adaption

### STABLE TREND

trend that is already present in  
the market with flat growth

### LAST CALL

trend with decreasing perspective but  
still having business potential

## TREND MAGNITUDE



### MANIFEST

AN ICONIC PRODUCT THAT IS  
A STABLE TREND OF LARGE  
MAGNITUDE WITH CONFIRMED  
COMMERCIAL SUCCESS



### INVEST

A CORE PRODUCT REPRESENTING  
A STEADILY GROWING TREND OF  
MODERATE MAGNITUDE WITH COM-  
MERCIAL POTENTIAL



### TEST

A STATEMENT PRODUCT WITH  
GROWING PERSPECTIVE BUT  
SMALLER MAGNITUDE AND  
HIGHER RISK





**DATA** TO DRIVE

01 **CREATIVITY**

02 **STRATEGY**

03 **SUSTAINABILITY**



LIVETREND

**THANK YOU!**

You may not copy, reproduce, distribute, publish, display, perform, modify, create derivative works, transmit, or in any way exploit any such content, nor may you distribute any part of this content over any network, sell or offer it for sale, or use such content to construct any kind of database. You may not alter or remove any copyright or other notice from copies of the content on any Livetrend report.

**If you have further needs, please  
contact us via chat.**