



WOMENSWEAR
FW 2025
FORECASTING
KNITWEAR
YARNS
& STITCHES



LIVETREND

KNITS FW25 INTRODUCTION



ulla johnson

stella-mccartney-.jpg

rabanne

maisie wilen



FORECAST

Sophisticated Compact & Cozy Texture.

FW 25/26 knits usher in a captivating array of textures and styles, striking a balance between timeless sophistication and comforting tactility. At the forefront are compact knits, meticulously crafted to evoke a sartorial elegance, offering a polished and structured look that exudes refinement. Complementing these are a rich tapestry of textured knits, ranging from sumptuous fur to playful fringe and classic bouclé, each adding depth and character to every garment. Interspersed within this array of textures are intimate moments in delicate lace knits, pointelle or veiled options adding a touch of romance and femininity. Whether embracing the timeless allure of classic knits or exploring the avant-garde realm of experimental designs, FW 25/26 knits are blending craftsmanship, creativity, and sophistication in equal measure.

This forecasting report is realized crossreferencing LIVETREND data from several sources to empower the expertise of our Trend Analysts to forecast the trends with concrete and quantitative information. Find the related data sources and icons on the last slides.

[ACCESS ALL IMAGES
CLICKING HERE](#)

SAFE TREND



jil sander

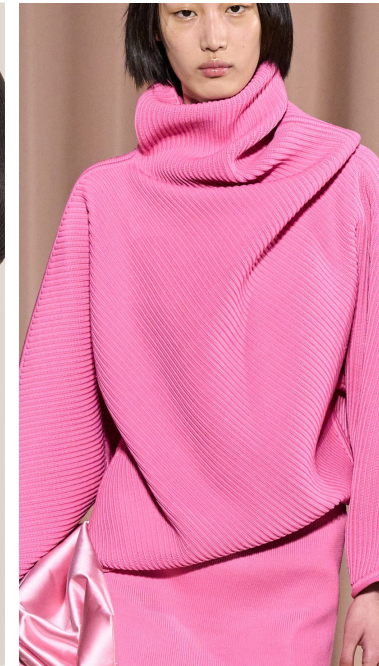
TIGHT TENSION - THICK GAUGE (3-5-7) - RIBS

This compact knit stitch is characterized by its tight tension and thick gauge, often featuring visible ribs. Air spun yarns produce a unique gummy-like effect, offering a distinct texture and appearance. Often blended with viscose or artificial fibers to give a fluid and soft handle. The high tension creates a dense and sturdy fabric, ideal for garments and accessories where durability and structure are desired. It provides excellent insulation and lends a polished and refined look to the finished piece, adding a touch of chunky softness.

FW25 COMPACT KNITS



alaia



philosophy



max mara



stella mccartney



@rusthebrand-1.png



blumarine1.jpg

SAFE TREND



@gabriela hearst2.png

TIGHT TENSION - COTTON/WOOL/VISCOSE

This compact knit stitch, worked on medium weight yarns, is generated with a tight tension and is ideal for transitional seasons. With its slightly stiff texture, it offers a balance of essentialism and sartorial chic, making it perfect for layering. Particularly effective in cotton/woolen blends, viscose/nylon or even experimental linen mixes, it ensures comfort while retaining a polished finish. Its density is suitable for tops, cardigans, or dresses, ensuring a sophisticated look.

FW25 COMPACT KNITS



khaite



serino studio.jpeg



ralph lauren



bottega2.jpg

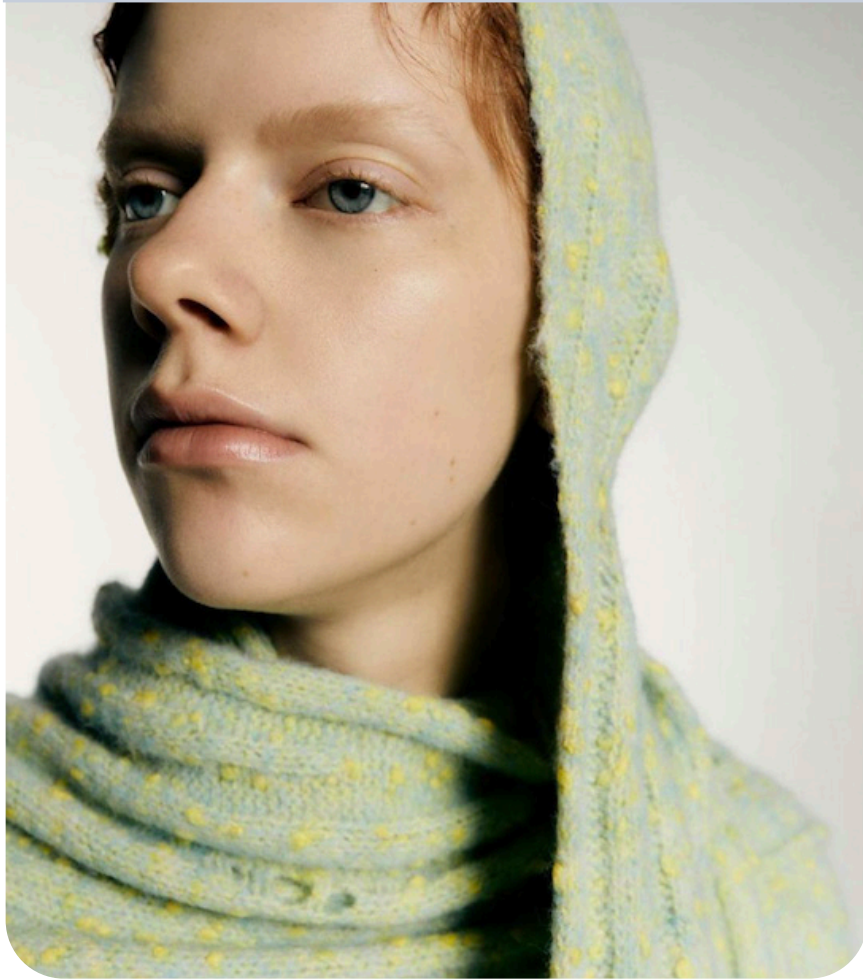


16 arligton



brandonmaxwell.webp

SAFE TREND

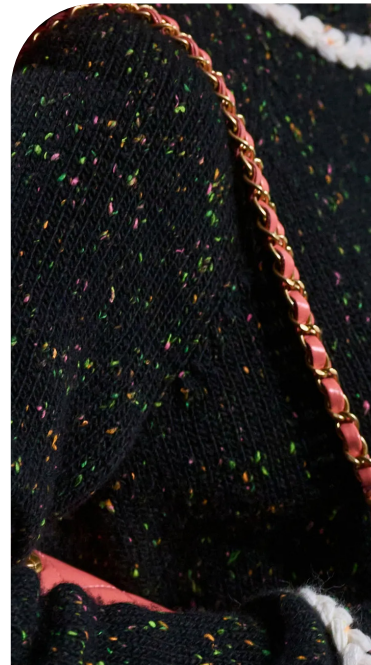


@rusthebrand-8.png

REVISITED CLASSIC YARNS VIA COLOR POPS

These knop yarn draw inspiration from classic tailoring tweeds, offering a refined but irregular aesthetic with a touch of vintage charm to fit the #grandpacore aesthetic. For FW2526 these yarns often feature flecks of contrasting colors or yarns, creating colorful pops that add playful visual interest. Tweed knits exude a timeless elegance and versatility, making them a commercial choice for adding micro texture to any collection.

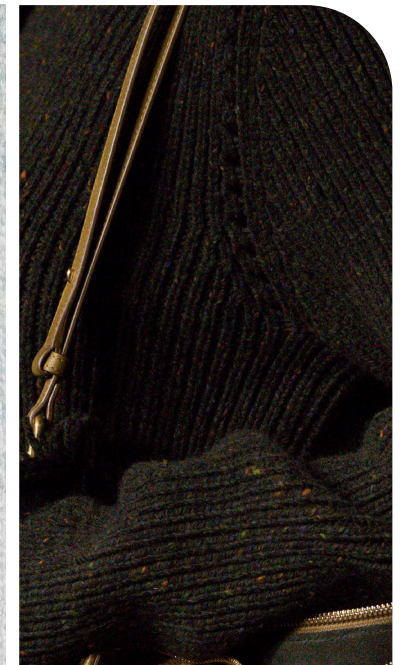
FW25 TWEEDS



chanel



Baglioli Modesto LOOP



burberry



tods



chanel



@rusthebrand-4.png

SAFE TREND



gucci

EXPERIMENT: EMBROIDERY, XXL, CONTRAST

Mouliné knits offer an artsy and eclectic vibe this season, particularly in embellished or XXL yarn versions, where they create new reworked contrasts. The mouliné yarns involve twisting together different colored yarns to create a marbled or variegated effect, resulting in a visually dynamic fabric. Whether used for sweaters, cardigan, dresses, scarves, or statement accessories, these classic fancy yarns infuse irregular texture and interesting color blend, suitable for any further embellishments.

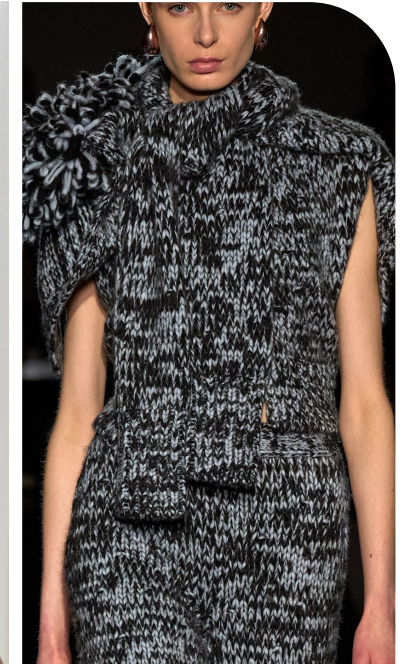
FW25 ARTY MOULINÉ



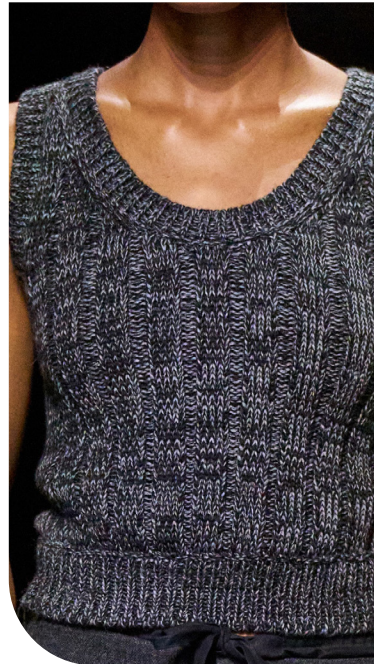
missoni



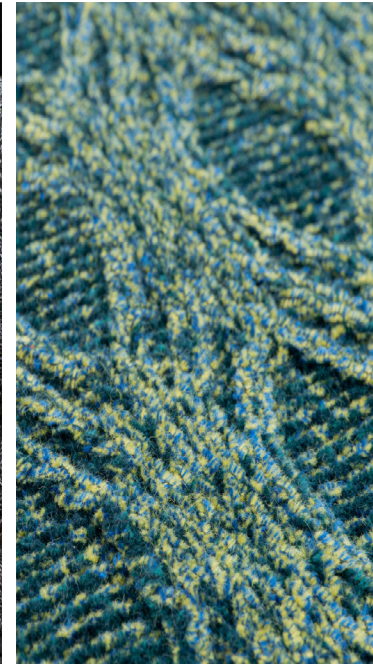
colville



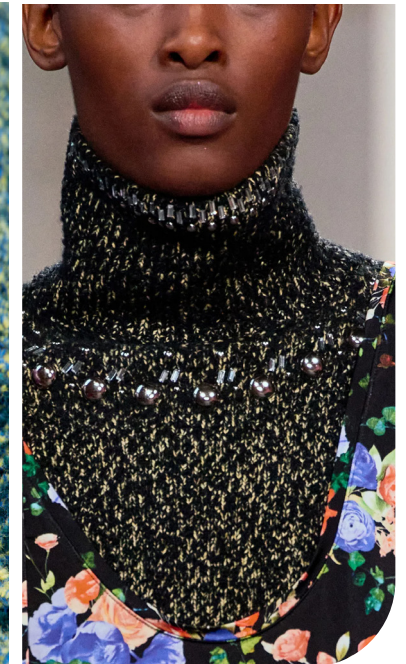
missoni



bottega veneta



MONTICOLOR - VELOUR



alexander mcqueen

SAFE TREND



tokyo james

BOUCLÉ / VRILLÉ

Bouclé and vrillé knits feature an interesting micro texture, adding depth and character to knits. The bouclé creates small loops and twists, giving the knit a subtle and intriguing texture. These yarns create a material with a unique and tactile quality, inviting touch and exploration. Whether used for sweaters, cardigans, or dresses, bouclé and vrillé knits offer a sophisticated natural option that adds visual interest to any ensemble.

FW25 BOUCLÉ



calcaterra



chanel



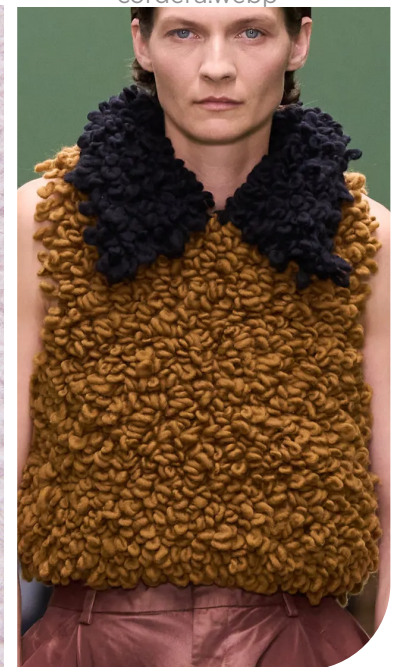
cordera.webp



fabiana fillippi.jpeg



Lanificio dell'olivo BENE



loewe

STABLE TREND



marni

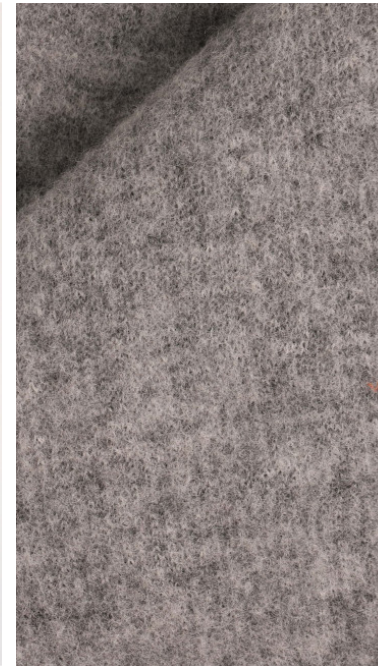
FURRY YARNS - BRUSHED EFFECTS

Brushed knits, crafted from premium materials like mohair, alpaca, cashmere, or their blends, offer a luxurious and soft texture. The brushing process enhances the surface, creating a fluffy and fuzzy effect known for its cozy warmth and plushness. This adds depth and dimension, giving a tactile richness and reassuring cocoon feeling. Brushed knits provide an indulgent and stylish option for chilly days, enveloping the in a cloud of softness and luxury.

FW25 FURRY TEXTURES



by marlene birger 3.png



c pauli.jpeg



mame-kurogouchi



auralee7.png



@rusthebrand-6.png



givenchy.jpg

LAST CALL



ming ma0.jpeg

BRUSHED YARNS - OVERDYE OR DYED YARN

Updated gradient knits, crafted with brushed yarns, offer a luxurious and textured take on the gradient trend. These knits feature a subtle transition of colors, blending seamlessly from one hue to another. The brushed yarns add depth and softness to the gradient effect, creating a plush and cozy fabric with a gradient coloration. The result is a stylish garment that retains a sense of sophistication and elegant softness. These updated gradient knits add a touch of warmth and style.

FW25 MARBLED MOHAIR



susan fang



etro



erl



@lowclassicseoul_6.png



Maisie Wilen -6_1.png



casablanca



EDGY TREND



stella mccartney

GAUGE 3-HANDMADE-CHUNKY/FURRY YARN

Faux fur knits, crafted with chunky and furry yarns, offer a cozy and stylish alternative to traditional furs. Handmade, crafted with gauge 3, these knits feature a plush texture reminiscent of real fur, adding warmth and tactile appeal to any outfit. These stitches and yarns add dynamism to the product that moves with the body's movements. Perfect for cocooning coats, sweaters, scarves, and accessories, faux-fur knits provide a chic bohemian and cruelty-free option for staying warm and fashionable during colder months.

FW25 FAUX FURS



danny reinke



Monticolor - WELOVE



gabriela hearst



diesel7.jpg



demeulemeester.jpg



luisa-spagnoli-.jpg

EARLY SIGN

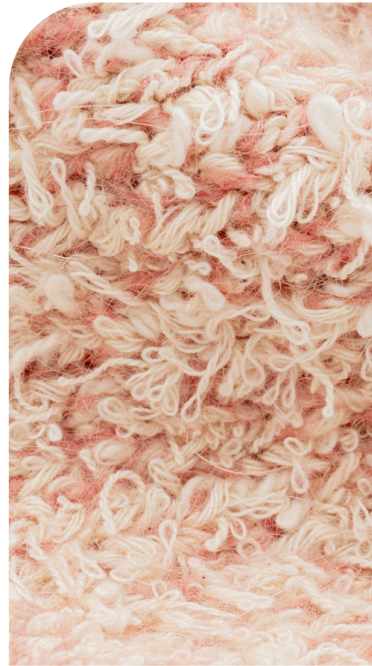


burberry5.jpg

MOOP LOOPS - GAUGE 3/HANDMADE

Chunky fringe knits, boast a striking and tactile aesthetic for rtw pieces and accessories. Featuring moop loops and chunky yarns, these knits create a dramatic effect with their bold texture and movement. The fringe adds an extra dimension of depth and visual interest, making a statement in any outfit. Whether adorning sweaters, scarves, or accessories, chunky fringe knits offer a bold stylish and dynamic effect on details, hems or allover, to never go unnoticed during colder seasons.

FW25 CHUNKY FRINGES



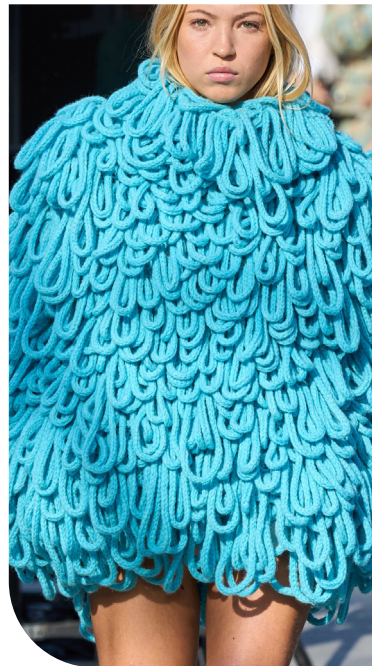
Monticolor COLORFUL



marant-.jpg



del core3.jpg



stella mccartney



stella-mccartney.jpg



missoni 2.jpg

EARLY SIGN



phillip-lim.jpg

FRINGE DETAIL

Hairy fringe knits, characterized by their tactile movement and purposeful irregularity, offer a more subtle textured aesthetic. The placed fringe effect creates a soft and fluffy look that sways with every movement, adding a playful and whimsical touch to any garment. This intentional irregularity enhances the visual interest of the knit, giving it a distinct and artisanal appeal. Such hairy fringes bring a sense of warmth and charm to any outfit, making them a versatile and eye-catching choice for winter.

FW25 HAIRY FRINGES



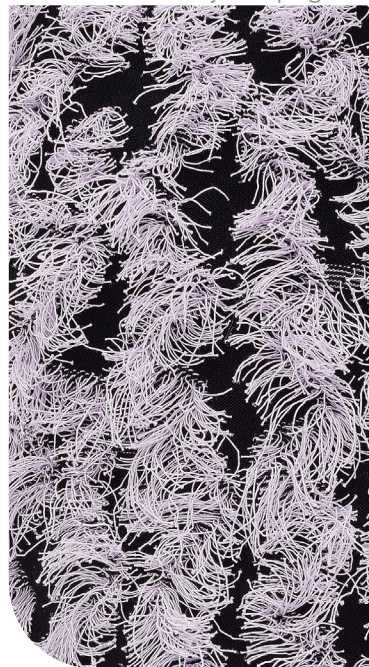
christian wijnant.png



palcosett.jpeg



aurora.jpeg



bottega4.jpg



erdem



roberto cavalli

SAFE TREND



yuhan-wang-.jpg

POINTELLE KNITS

Pointelle knits exude an intimate and girly charm, characterized by delicate, openwork stitches that with an almost lacy effect. These knits feature intricate eyelet patterns adding a touch of femininity and whimsy. The lightweight and airy texture of pointelle stitch gives a delicate and romantic feel, perfect for transitional periods and layering. Whether used for sweaters, cardigans, dresses or trendy mini shorts, pointelle knits evoke a sense of intimacy and grace, reminiscent of lingerie.

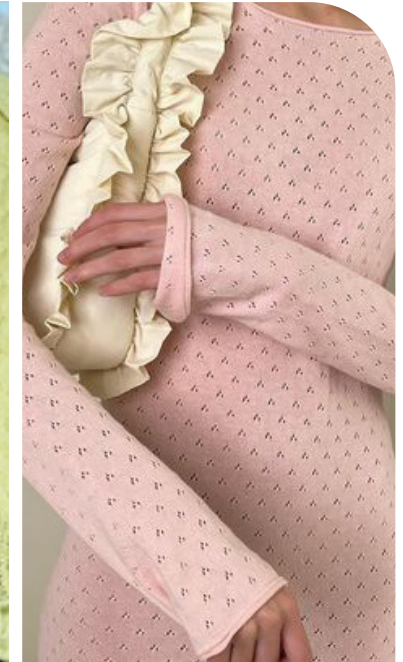
FW25 INTIMATE OPENWORK



by marlene birger



holzweiler-11.png



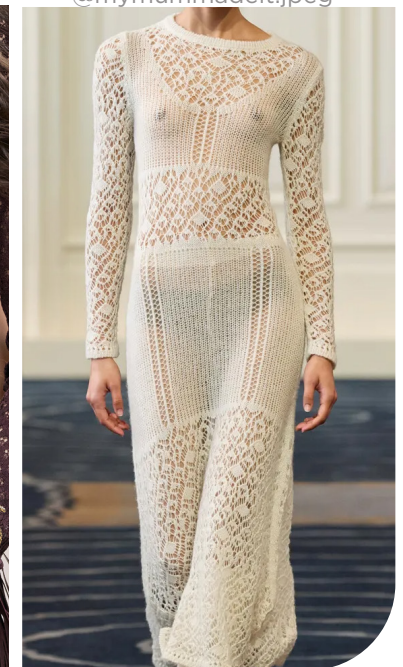
@mymummadeit.jpeg



marco-rambaldi_.jpg



chloe



alejandraalonsorojas.webp

STABLE TREND



acne_studio11.jpg

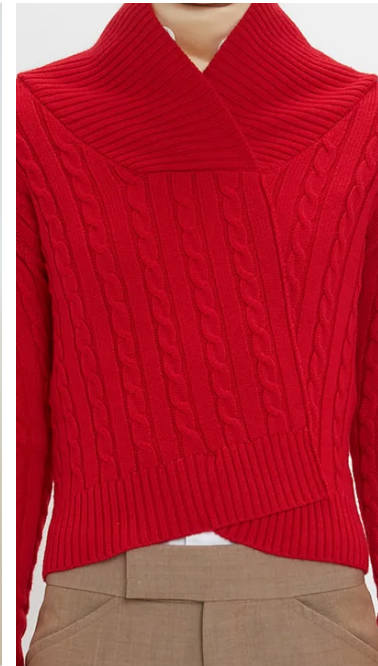
ASYMMETRIC - MIXED - PLAYFUL

Updated cable knits take a playful approach with asymmetric, contrasted, and mixed aran patterns. These modern interpretations of traditional cable knits infuse a sense of dynamism and creativity into the fabric. By combining different cable designs, introducing contrasting textures or colors, and playing with asymmetry, these knits offer a fresh and contemporary twist on a classic style. The result is a visually engaging and adds character/personality to any outfit.

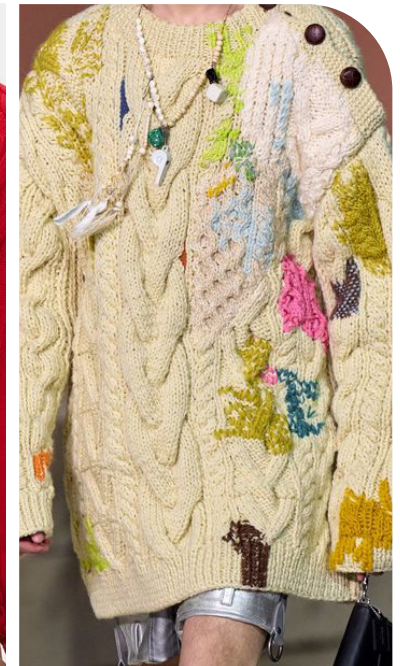
FW25 ARAN/CABLES



LOEWE_8.jpg



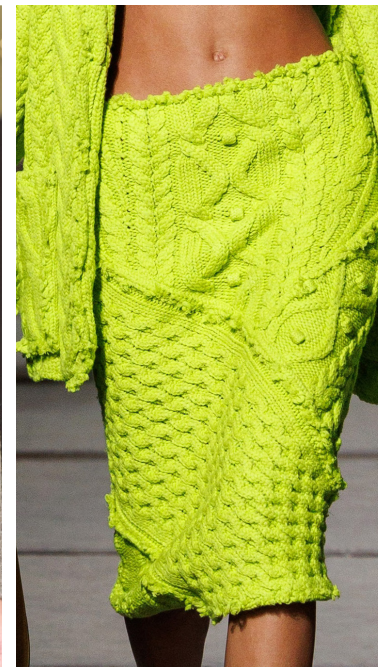
victoria beckhal



coach3.jpeg



fendi-.jpg



mc queen



max mara

EARLY SIGN



stella mccartney

FW25 TROMPE L'OEIL



bottega veneta.jpeg



mara hoffmann



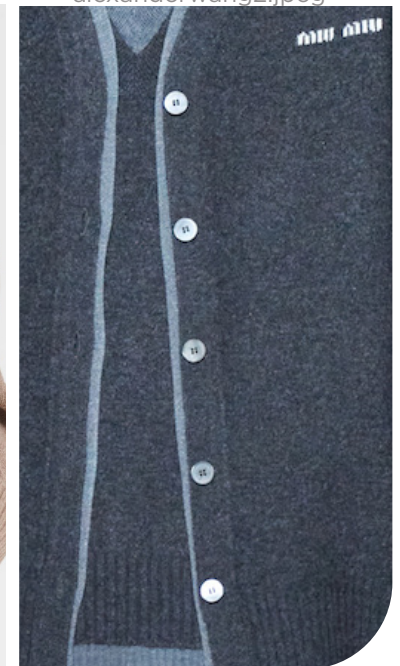
alexanderwang2.jpeg



pinterest switlana.jpeg



P00850829_b1.jpg



miu miu

TROMPE L'OEIL EFFECTS

Trompe l'oeil knits feature new cuts and doubled hems or collars, creating an illusion of multiple garments stacked upon each other. This technique allows for an interplay with different knit types, seamlessly blending textures and patterns. The result is a visually dynamic and intricately detailed blend that captures attention and adds creativity to the garment. With its clever design, layered trompe l'oeil knits offer personality and add fun to the timeless category of knitwear.

EARLY SIGN



dion lee.jpeg

STRIPE RIBS

A new play on stripes is provided by ribbed knitting that involves a color change or print or coating. Dynamic and stretchable color contrast produces sinuous and striking effects, accentuating changing color contrasts. The tight-fitting garments range from basic to sporty, with rather technical yarns and viscose blend. It will be interesting to play with bright contrasts on pastels and neutrals for fashion styles, or with camaieux and light-dark hues for basic pieces.

FW25 CONTRASTED RIBS



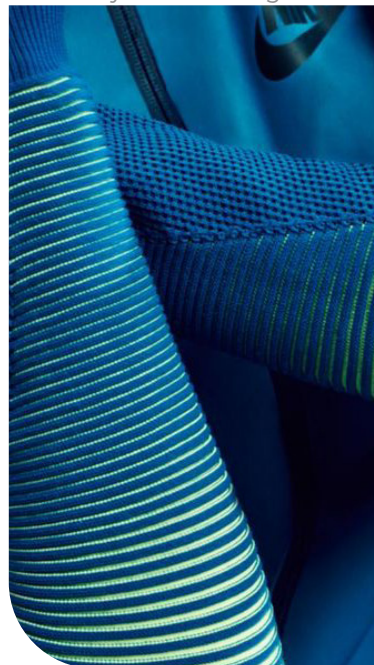
by marlene birger



ribs.jpeg



issey Miyake.jpeg



nike.jpeg



bottega



ArtsThread.jpeg

EDGY TREND



roberto-cavalli-.jpg

VEILED - GAUGE 14/16/18

Veiled knits offer a sheer and delicate aesthetic, achieved through a fine gauge ranging from 14 to 18. These knits feature a lightweight and transparent quality that adds a fragile and sophisticated effect to any garment. These sheer knits allows for subtle glimpses of skin or undergarments, creating a sense of allure and subtle seduction. Whether used for tops, dresses, or layered over other garments, veiled knits exude a sense of refinement.

FW25 INTIMATE SHEERS



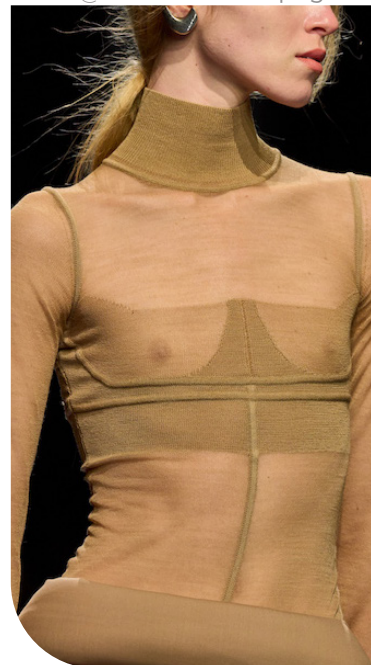
@rusthebrand-11.png



acne studios



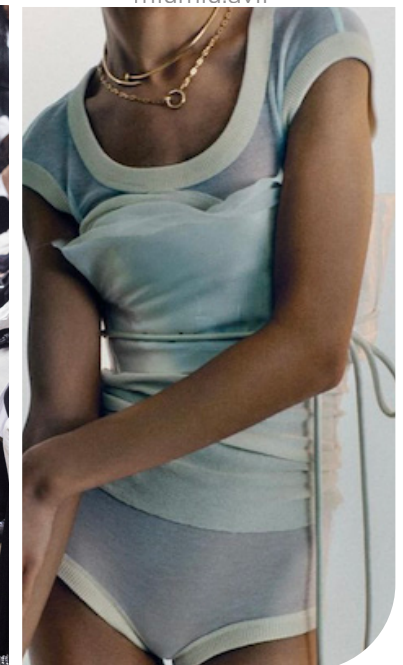
miumiu.avif



sportmax-.jpg



proenza-schouler.jpg



@mathoieudelbreuve-17.png

STABLE TREND



demeulemeester_1.jpg

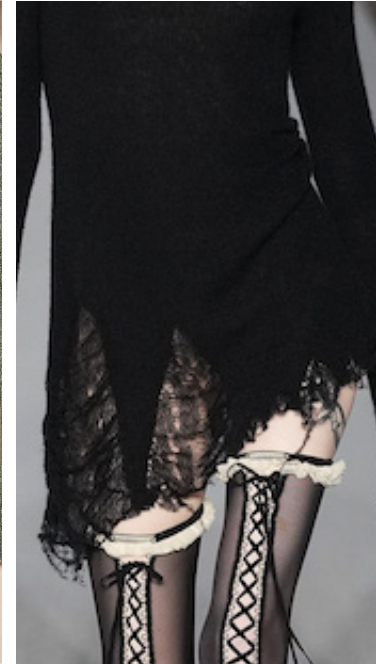
SEE-THROUGH: ASYMMETRIC RUNNING STITCH

Partially veiled knits employ asymmetric running stitches or patchwork effects to create a captivating visual dynamic. These techniques highlight specific areas of the body. By partially revealing and concealing sections of the garment, these knits offer a subtle and intriguing effect that plays with revealing what's underneath. From wolly mohairs to fine viscoses and nylons, this unfinished effect enhance artianality and uniqueness of the knitwear piece with creative designs.

FW25 PARTIALLY SHEERS



acne studio10.jpg



aniye records -1.jpg



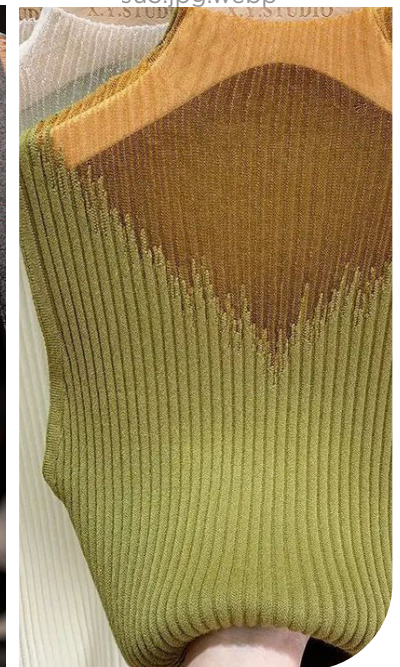
su3.jpg.webp



paloma wool2.jpeg



chet lo



couturecozy.jpeg

STABLE TREND



@tg.botanical1.png

UNFINISHED / DETROYED HEMS

These unraveled knits feature unfinished hems, offering a modern update to previous drop needle grunge styles with a new twist. These knits showcase intentional fraying and unraveling along the edges, creating a raw and edgy aesthetic. The contrast between the structured knit fabric and the undone hems adds visual interest and a sense of rebellion to the garment. Whether used for sweaters, tops, or dresses, unraveled knits exude a cool and effortless vibe, perfect for adding a touch of urban edge.

FW25 UNRAVELLED



tgbotanical5.png



mc queen



acne studio5.jpg



@rusthebrand-3.png



stella mccartney



ann demeulemeester-18.png

EARLY SIGN



miu-miu-.jpg

EXPERIMENTAL COATINGS / CRAQUELÉ

Tactility is one of the biggest trend for FW25 and knitwear is going more experimental adding innovative effect, achieved through coating, offering a diverse range of textures. Metallic or crackled coatings add a touch of extravagance to the fabric, creating a treasured appearance. When applied to furry yarns, the coating adds a novel twist, renewing the texture with a subtly shiny finish or craqueled effect. This technique creates new dimension, transforming furry knitwear into visually striking and intriguingly tactile pieces.

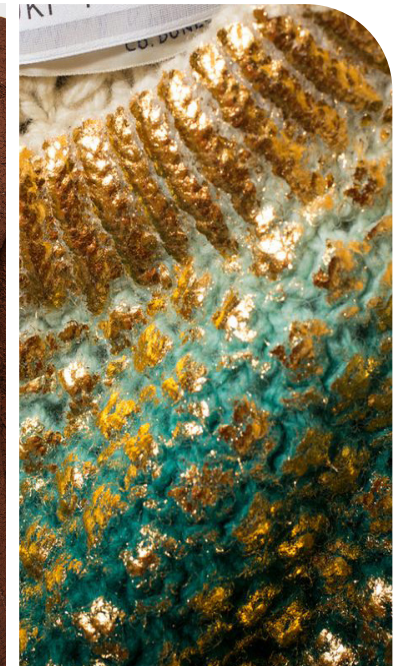
FW25 COATED KNITS



prada winter 07.jpeg



acne studio8.jpg



yuki-fujisawa.com .jpeg



zaraaaa.jpeg



sportmax2.png



beone.jpeg

EDGY TREND



miu miu

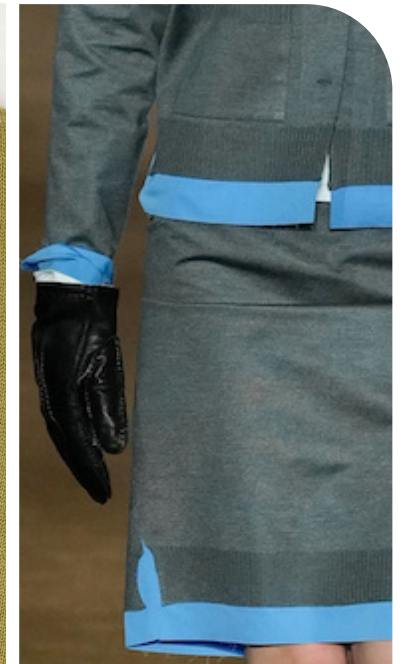
FW25 MIX & MATCH



dries van noten



jw anderson.jpg



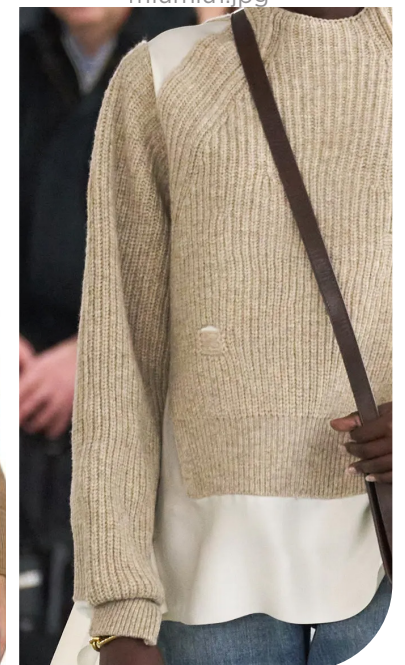
miumiu1.jpg



margiela é.jpeg



ssense.com .jpeg



undercover

BONDED KNIT - LAYERED ON SHIRTING

Stiffness is a powerful trend for FW25 Knits, giving a sartorial potential to the material when bonded with woven fabrics. This technique combines the structured elegance of woven fabrics with the cozy comfort of knits, creating a sophisticated and refined look. The resulting fabric is both stylish and functional, offering warmth while maintaining a polished appearance. Ideal for tops and skirts, this hybrid technique elevates traditional knitwear to a new level of sartorial sophistication.

SAFE TREND



gucci

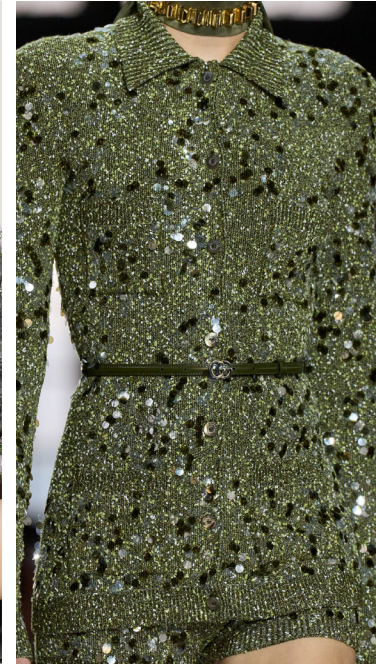
SEQUINS - BEADS - GLITTER FRINGES

FW25's embellished knits dazzle with sparkling fringes, beads, and sequins, elevating with a touch of glamour and maximalism. These intricate details add dimension, catching the light and creating a stunning visual effect. Whether used sparingly for subtle accents or lavishly for statement-making all-over designs, embellished knits instantly transform into a chic and eye-catching ensemble. Perfect for special occasions, like the holidays, or for just adding a touch of sparkle to everyday looks,

FW25 EMBELLISHED



miu-miu.avif



gucci



stellamccartney3.jpg



louis vuitton



versace15.jpg



scervino-9.jpg

FANCY PATTERNS

FW25 HANDCRAFTED

bottega-veneta-black-white-knit-cotton-intrecciato-sweater.jpg



LOOSE YARN EFFECTS - IRREGULAR GAUGE



yuhan-wang-clp-f24-030.jpg



etro-fall-2024.JPG



iceberg5.jpg



next.jpeg



etro10.jpg



knit.jpeg

FANCY PATTERNS

FW25 IRREGULAR WAVES



bottega_1.jpeg

LOOSE YARN EFFECTS - IRREGULAR GAUGE



@rusthebrand2.png



ulla-johnson-white-demi-sweater.jpg



bottega.jpeg



oasis.jpeg



@rusthebrand-2.png



depop.jpeg

FANCY PATTERNS

FW25 NEW NORDICS



ulla johnson

CREATIVE FAIR ISLE



by marlene birger



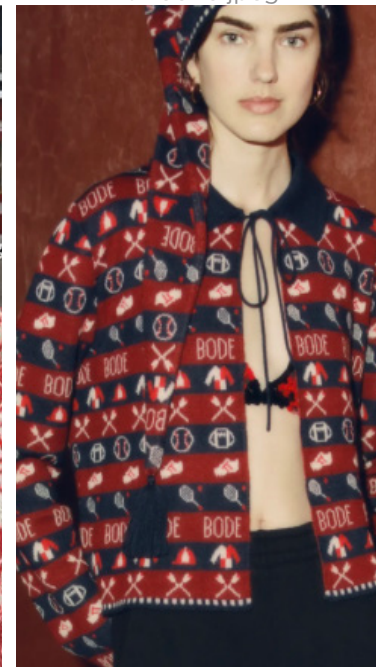
sinoon0.jpeg



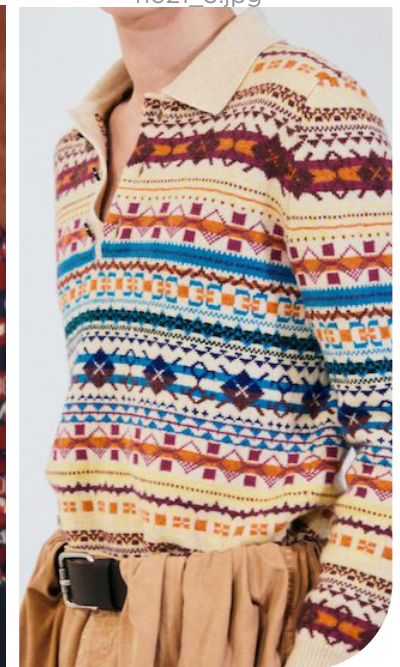
no21_3.jpg



ganni.jpeg



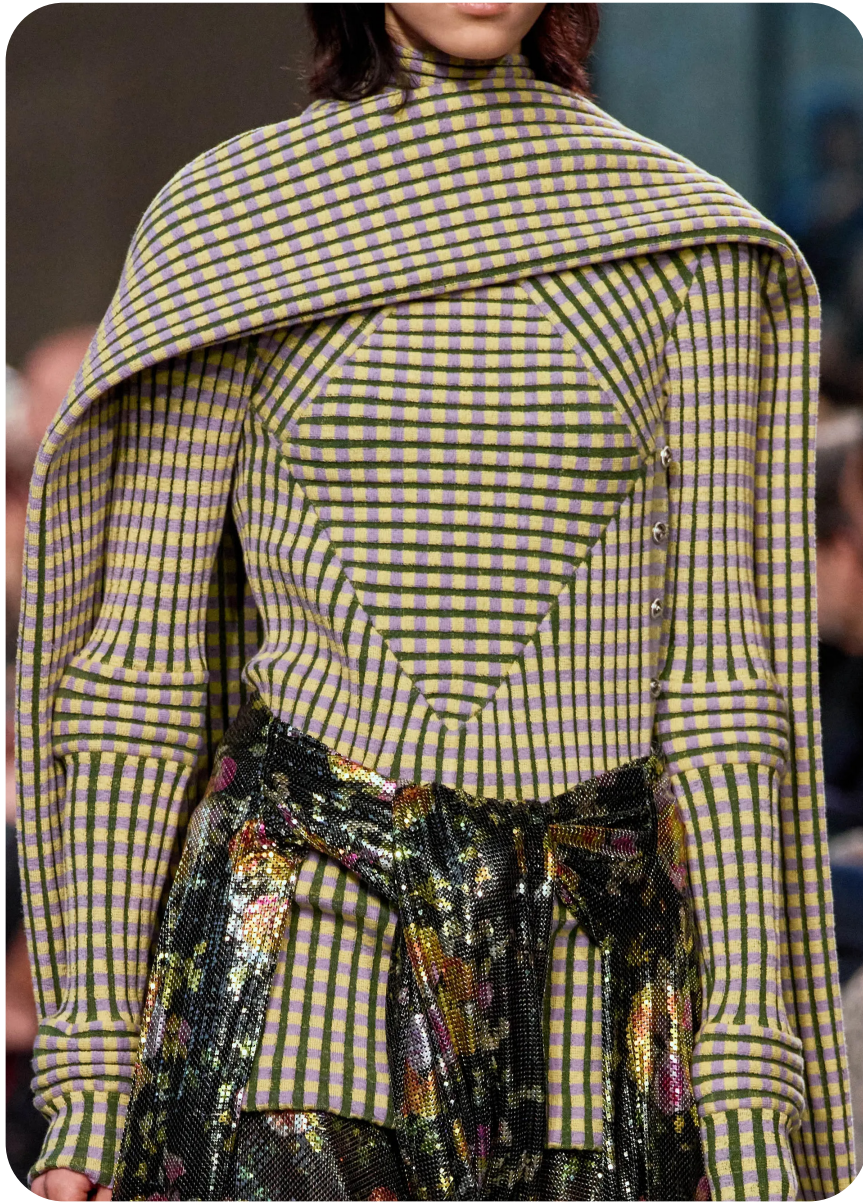
cider



LOEWE_39.jpg

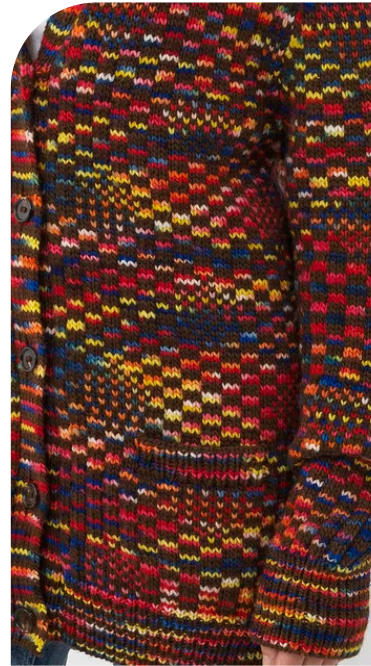
FANCY PATTERNS

FW25 BAUHAUS COLORBLOCK



rabanne

CREATIVE CHECKS



chloe



@pollack.jpeg



@SOCIAL DECK.jpeg



Carbonmade.jpeg



chloe



bash.jpeg

FANCY PATTERNS

FW25 BLURRED STRIPES



chanel

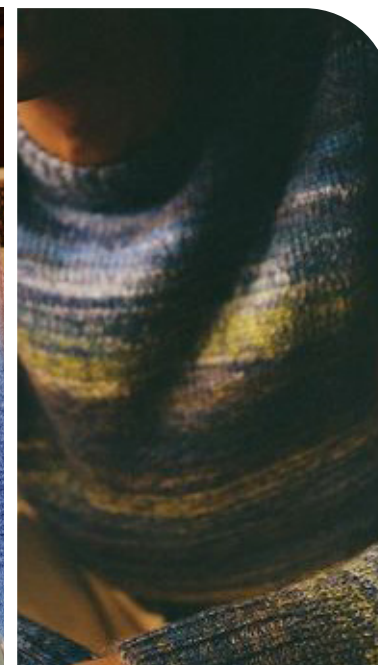
SPACE-DYED YARNS



etro



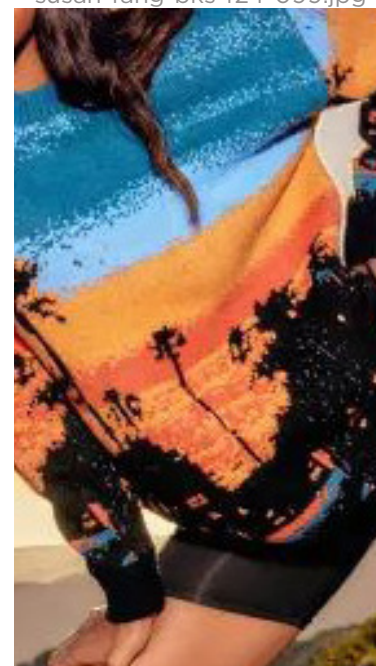
susan-fang-bks-f24-099.jpg



corridor



acne.jpeg



CIDER6.jpg



@lesmaidemamie.jpeg

FANCY PATTERNS

FW25 TAKE A BOW



@riviera bikini.jpeg

ADD-ON / INTARSIA



coach-bks-f24-082.jpg



nonna shop-17.jpg



thesorrygirl.jpeg



wconcept3.jpeg



paloma wool.jpeg



lisasaysgah.jpeg

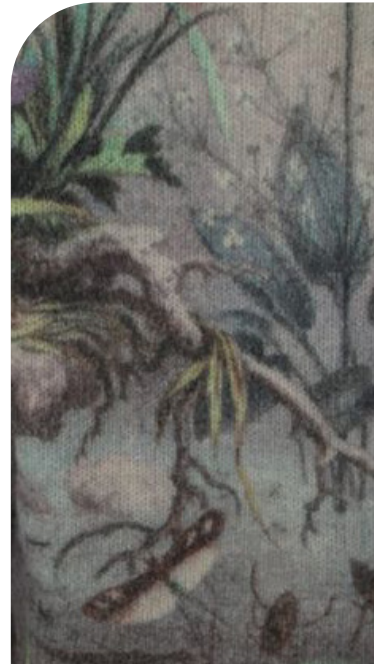
FANCY PATTERNS

FW25 DREAMSCAPE ORCHARDS



monse

PRINTED SUBTLE WASH



etro



dries van noten.jpeg



corridor



sezane.jpeg



acnestudio3.avif



iceberg.jpeg

FANCY PATTERNS

FW25 DAINTY BOUQUETS



monse

FLORAL INTARSIA JACQUARD



etro



paliq lt.jpeg



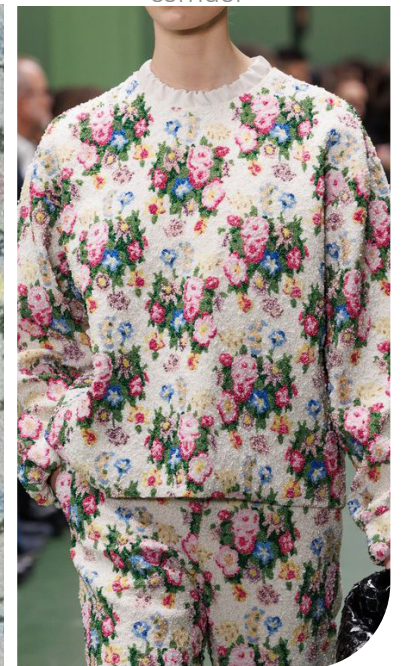
corridor



magdabutrym.jpeg



rabanne.jpeg



loewe.jpeg

FANCY PATTERNS

FW25 PET FRIENDLY



Loewe.jpg

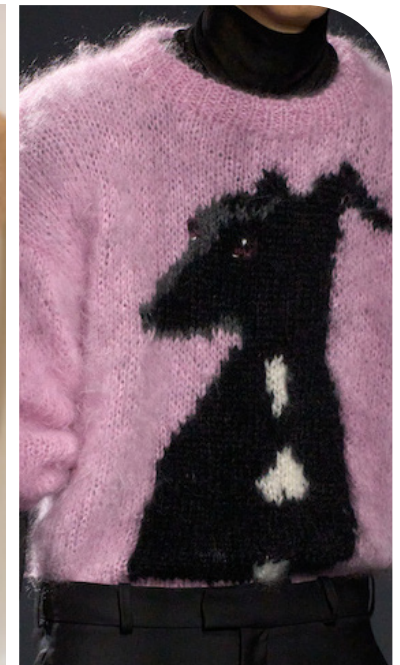
INTARSIA JACQUARD



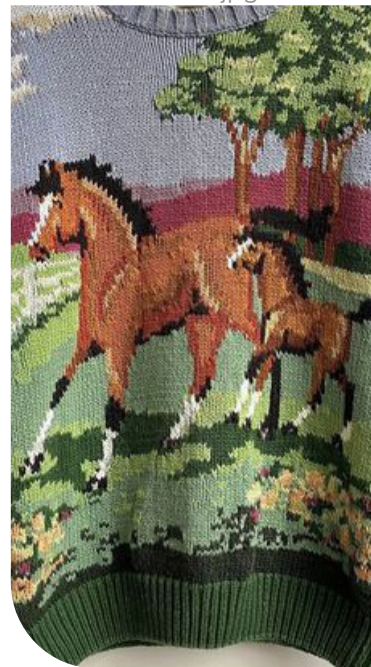
coach.jpg



melke5.png



16arlington.jpg



@holythrit.jpeg



melke4.png



KGL-3.png

DATA SOURCES & ICONS

TREND GROWTH



MARKET

YEAR ON YEAR TREND GROWTH ON E-COMMERCE



SOCIAL MEDIA

YEAR ON YEAR TREND GROWTH ON INSTAGRAM



CONSUMER INTEREST

YEAR ON YEAR GROWTH OF ONLINE SEARCH VOLUMES



FASHION SHOWS

YEAR ON YEAR TREND GROWTH ON FASHION SHOWS

TREND BEHAVIOR

EDGY TREND

weak signal of a potential micro trend with very high risk

EARLY SIGN

emerging trend with growing perspective but higher risk

SAFE TREND

announced trend with growing perspective and safe risk

BIG TREND

trend with a big magnitude due to high commercial potential and quick adaption

STABLE TREND

trend that is already present in the market with flat growth

LAST CALL

trend with decreasing perspective but still having business potential

TREND MAGNITUDE



MANIFEST

AN ICONIC PRODUCT THAT IS A STABLE TREND OF LARGE MAGNITUDE WITH CONFIRMED COMMERCIAL SUCCESS



INVEST

A CORE PRODUCT REPRESENTING A STEADILY GROWING TREND OF MODERATE MAGNITUDE WITH COMMERCIAL POTENTIAL



TEST

A STATEMENT PRODUCT WITH GROWING PERSPECTIVE BUT SMALLER MAGNITUDE AND HIGHER RISK



DATA TO DRIVE

01 CREATIVITY

02 STRATEGY

03 SUSTAINABILITY



LIVETREND

THANK YOU!

You may not copy, reproduce, distribute, publish, display, perform, modify, create derivative works, transmit, or in any way exploit any such content, nor may you distribute any part of this content over any network, sell or offer it for sale, or use such content to construct any kind of database. You may not alter or remove any copyright or other notice from copies of the content on any Livetrend report.

If you have further needs, please contact us via chat.