



WOMENSWEAR
SS 2026
FORECASTING
TOPWEAR
KEY ITEMS



LIVETREND

SS26 TOPWEAR INTRODUCTION



Boxy Structures meet Soft Volumes


FORECAST


Spring/Summer 2026 topwear embody a balance of structured edge, feminine allure, and nostalgic charm. For shirts, a boxy, masculine influence prevails in oversized bowler shirts and casual workwear styles, blending functionality with relaxed sophistication. Sporty elements feature prominently in structured oversized XL tees, while caftan shirts bring a refined edge with their clean lines and ceremonial allure. For a feminine contrast, shirts consider Y2K-inspired slim fits, emphasizing body-hugging silhouettes, and peplum or hourglass styles for a touch of modern elegance. Sheer options or delicate details like lace trims add romance to the shirt range. SS26 blouses embrace dreamy, vintage aesthetics with a focus on fluidity and volume. Chiffon boho blouses and cottage-style pieces capture a soft, romantic essence, while puffy volumes add a whimsical, retro flair. More structured styles like ladylike peplums and tailored tops bring elegance and glamour. Fluid plunge camis and draped designs further highlight feminine silhouettes, offering effortless sophistication. This versatile assortment for SS26 tops seamlessly blends sporty, utilitarian influences with nostalgic and feminine designs, ensuring balanced options for every occasion and style.

This forecasting report is realized crossreferencing LIVETREND data from several sources to empower the expertise of our Trend Analysts to forecast the trends with concrete and quantitative information. Find the related data sources and icons on the last slides.

[ACCESS ALL IMAGES
CLICKING HERE](#)


SS26 TOPWEAR KEY DETAILS

 **INVEST**



chloe

THE FLOUNCE



EARLY SIGN


blumùarine

 **TEST**




@ritamontezuma


THE TIE-UP



STABLE TREND

@keziacook

 **TEST**




valli19.jpg


THE PEPLUM



SAFE TREND

reformation

 **MANIFEST**



Alberta Ferretti7.jpg

THE KNOTTEDRAPE



SAFE TREND

zara



SS26 TOPWEAR KEY DETAILS



TEST



stella mc cartney

THE DEEP PLUNGE



philosophy

SAFE TREND



INVEST



prada

THE FOULARD & TIE-UP



bottega

SAFE TREND



INVEST



Christopher Esber66.jpg

THE HIGH NECK



zara

STABLE TREND



INVEST



zara36.jpg

THE WATERFALL



versace

STABLE TREND



KEY ITEMS
SHIRTS & TEES



LIVETREND

SS26 SHIRTS & TEES **SPOTLIGHT**



MANIFEST



INVEST



TEST

BOXY SHORTSLEEVE



fendi27.jpg

Y2K SLIM-FIT



markgong4.png

CAFTAN



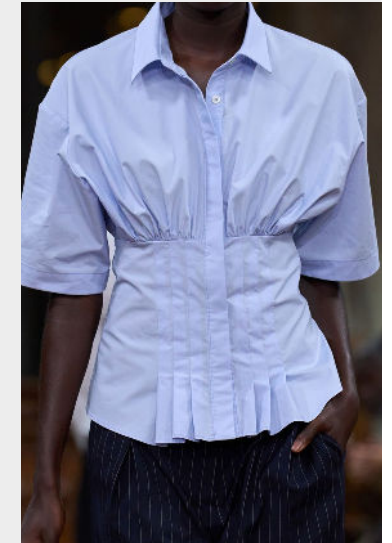
bottega

SHEER



delcore

HOURGLASS



monse

This Trend Spotlight proposes the must-have products of the season to build the right assortment.

This selection is made to ensure that you have the right collection staples, invest in the right core pieces and test the right trendy items within your product range.

Find the full list of seasonal core items on the next slides.

BIG TREND

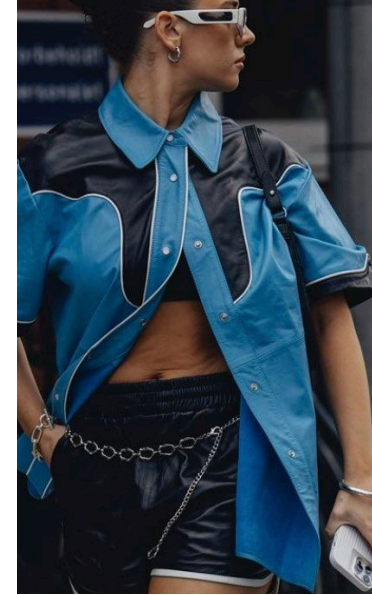
SS26 **BOXY SHORT-SLEEVE**



alemais15.jpg



zimmermann46.jpg



@claireguillon -1.png



johanna orzit



fendi27.jpg



bottega-veneta41.jpg



Copenhagen Streetstyle 16.jpg



STABLE TREND

SS26 OVERSIZED MEN'S SHIRT



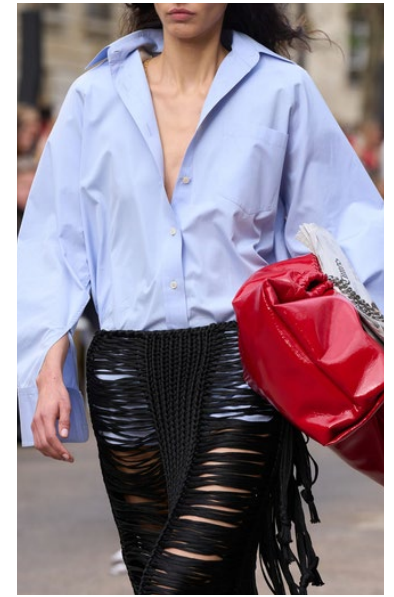
@helsastudio 7.png



patoul7.jpg



staudt 6.jpg



stella mccartney



Dhruv Kapoor 33.jpg



bottega



sezane3.avif

STABLE TREND

SS26 FITTED Y2K SHIRT



versace28.jpg



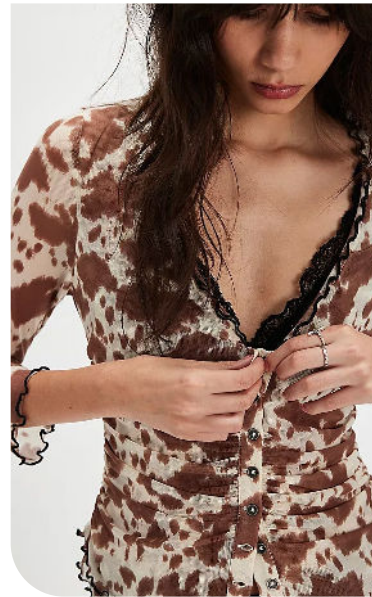
lucille pinterest.jpeg



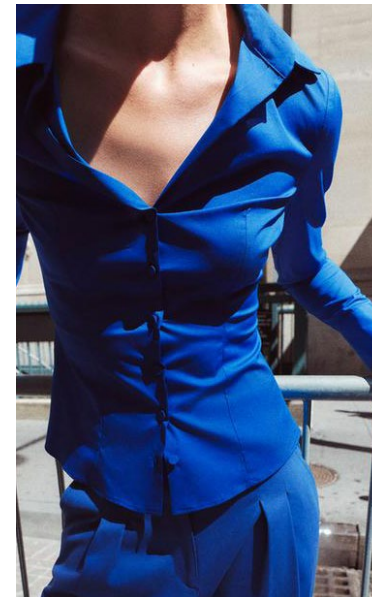
markgong4.png



streetstyle copenhagen



freepeople 22.webp



zara68.jpg



thereformation5.json.jpeg

STABLE TREND

SS26 FITTED T-SHIRTS



rouje44.webp



acne53.jpg



Operasport8.jpg



zara



urbanoutfitters 7.webp



chloe3.jpeg



streetstyle paris 12.jpg



SAFE TREND

SS26 CAFTAN STYLE



laquansmith32.jpg



marant8.jpg



gucci4.jpg



versace



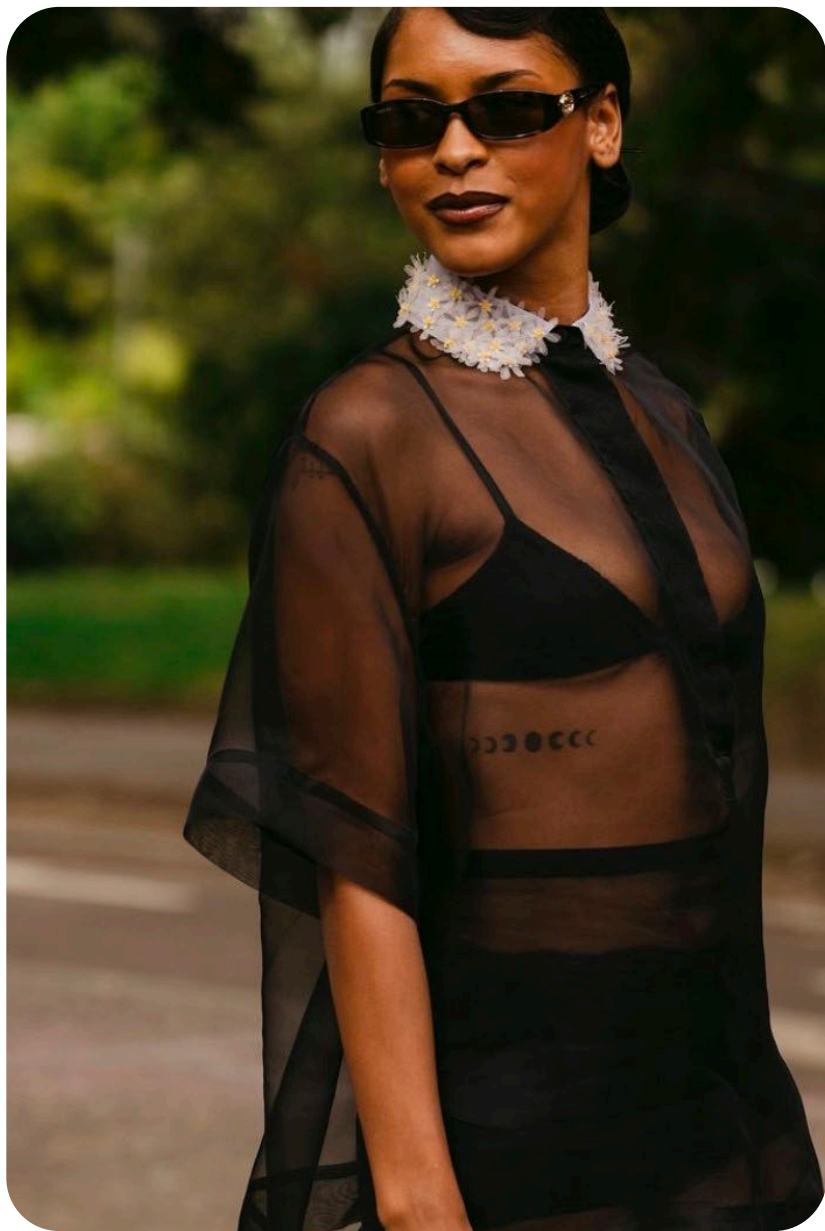
lutz-huelle33.jpg



zara76.jpg



bottega-veneta48.jpg



@claireguillon -25.png



del core -4.jpg



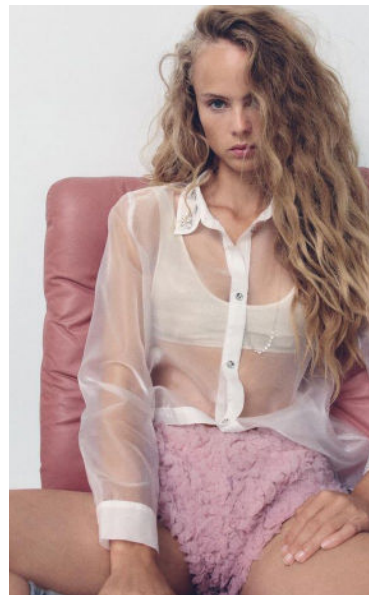
laquan smith_3.jpg



ganni



Domino Tan11.jpg



zara_lingerie_2.jpg



twp



SAFE TREND

SS26 SPORTY LEAGUE TEE



@claireguillon -14.png



freepeople 27.webp



@claireguillon -3.png



urban outfitters



london streetstyle



freepeople 18.webp



yuhan wang8.jpg

STABLE TREND

SS26 ELEGANT VEST TOP



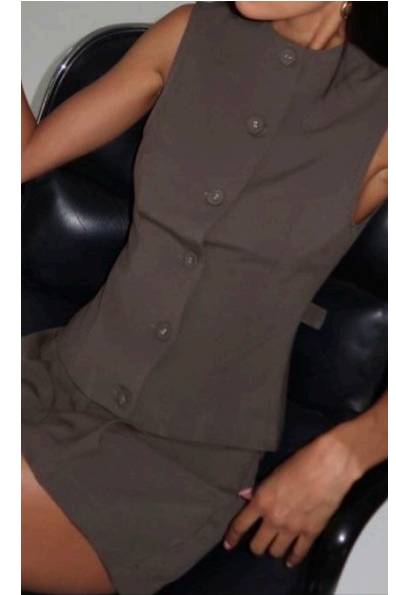
rag & bone



@claireguillon -7.png



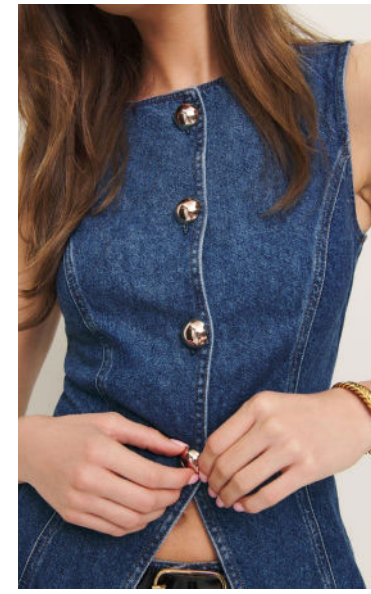
posse



@weworewhat



the frankie shop



thereformation13.json.jpeg



zara26.jpg



EARLY SIGN

SS26 XL TEE SHAPE



tods 6.jpg



jason wu-9.jpg



ulla johnson.jpg



fiorucci



sacai64.jpg



tods 9.jpg



anteprima.jpeg



EARLY SIGN

LACE TRIM



christopher esber3.jpg.webp



lutz-huelle30.jpg



markgong.png

SAFE TREND

CRINKLED



versace



rouje3.webp



@annameehan

EDGY TREND

REWORKED



streetstyle london 24.jpg



streetstyle london 36.jpg



dior49.jpg

SAFE TREND

HOURGLASS



dires van noten



streetstyle london 18.jpg



@annameehan



KEY ITEMS
BLOUSES & TOPS



LIVETREND

SS26 BLOUSES & TOPS **SPOTLIGHT**



MANIFEST



INVEST



TEST

BOHO



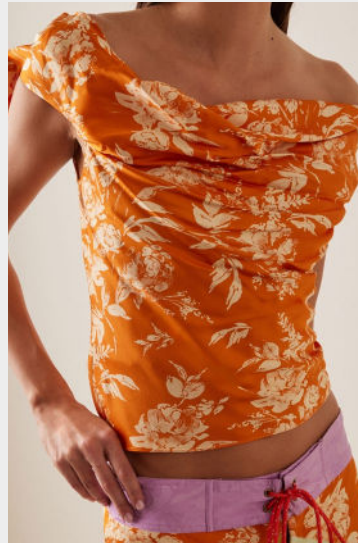
freepeople.webp

PLUNGE CAMI



versace 2.jpg

DRAPE



almeais

PUFFY



zara

PEPLUM



ganni

This Trend Spotlight proposes the must-have products of the season to build the right assortment.

This selection is made to ensure that you have the right collection staples, invest in the right core pieces and test the right trendy items within your product range.

Find the full list of seasonal core items on the next slides.

BIG TREND

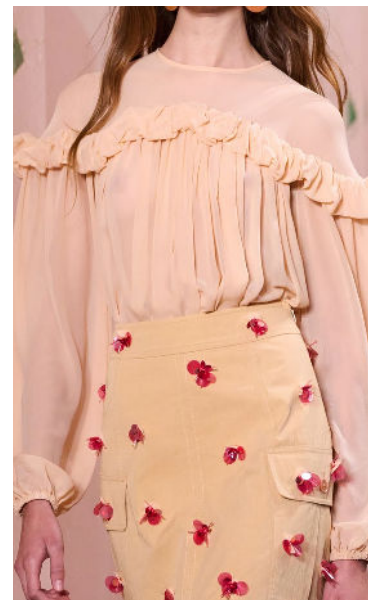
SS26 BOHO BLOUSE



nassir zadeh



zara44.jpeg



ulla-johnson87.jpg



rokh



saint-laurent70.jpg



zimmermann49.jpg



streetstyle milano 192.jpg

STABLE TREND

SS26 PLUNGING CAMI



@metalmagazine6.jpg



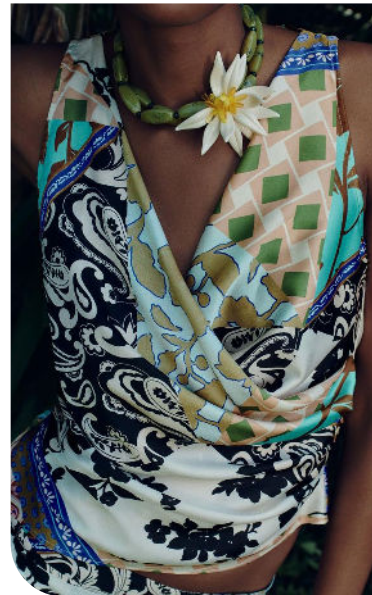
balmain-51.jpg



rotate



versace



Zara_43.jpg



urban outfitters-.webp



@cristinachenii.jpg

STABLE TREND

SS26 VINTAGE TIE-UPS



sea ny2.jpg



shimada-po-s25-005-11485673.jpg



sea ny.jpeg



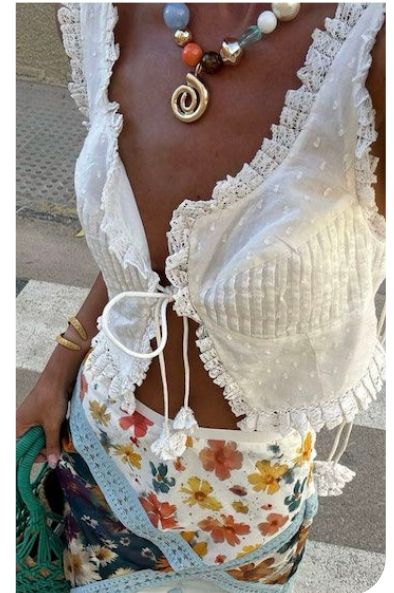
alemais



Copenhagen Streetstyle 18.jpg



freepeople 29.webp



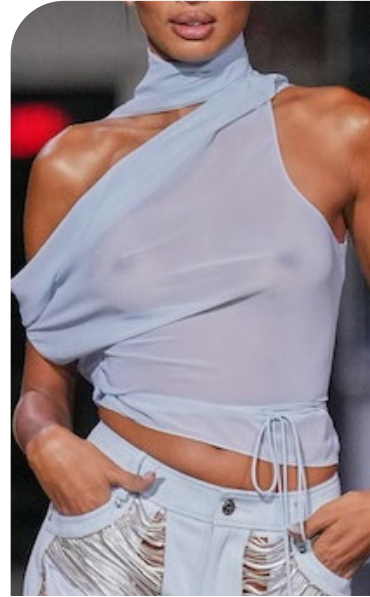
@keziacook 13.png

STABLE TREND

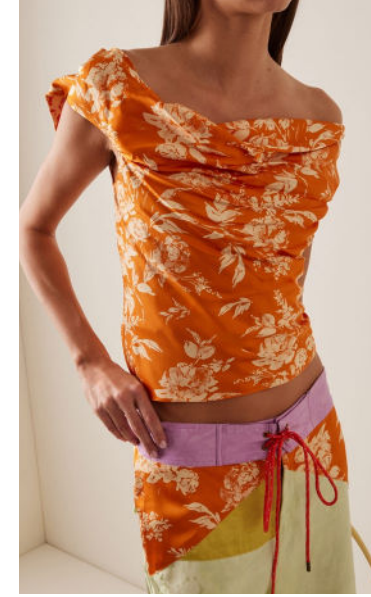
SS26 SOFT ASYMMETRIC DRAPES



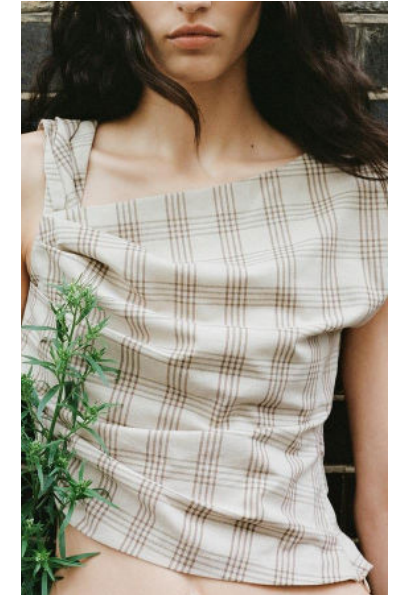
aje



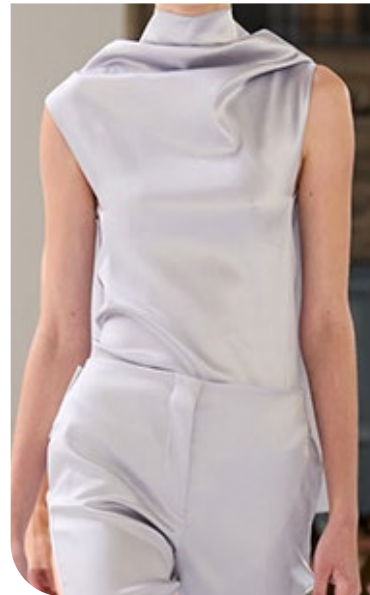
laquan smith_2.jpg



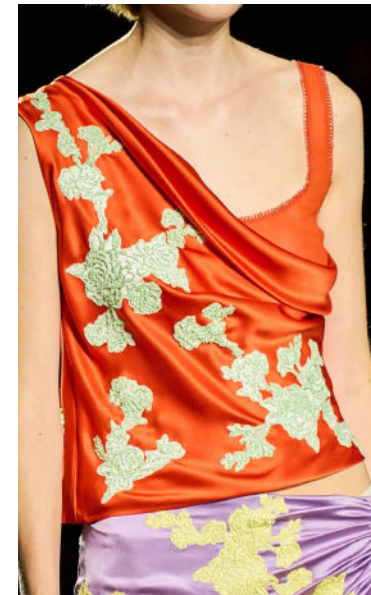
rosie assoulin



zara



sportmax



versace47.jpg



maxwell5.jpg

STABLE TREND

SS26 FEMININE CAMI



Chloé



zimmermann



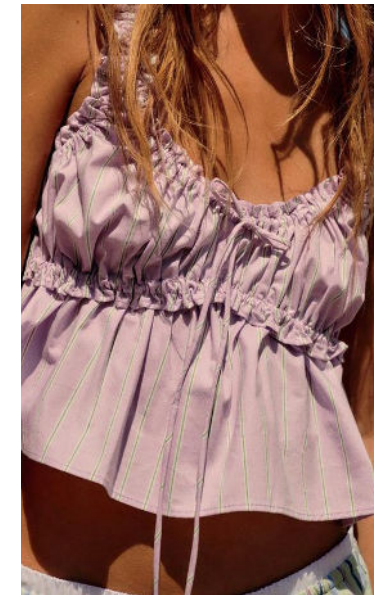
rojas10.jpg



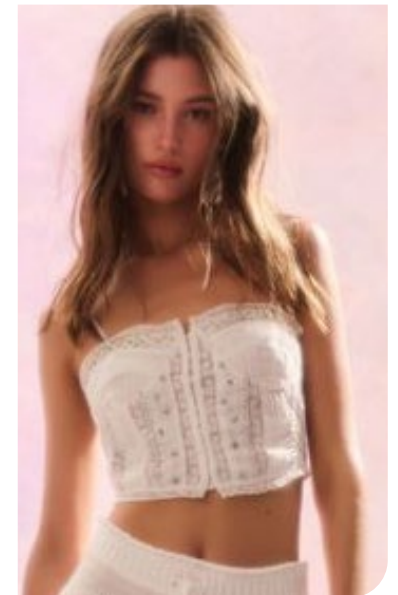
johanna oriz



kimhekim



zara5.jpeg



loveshackfancy.jpeg

SAFE TREND

SS26 PURE HIGH NECK



zara75.jpg



streetstyle milano 47.jpg



zimmermann54.jpg



zara



streetstyle london 49.jpg



tibi47.jpg

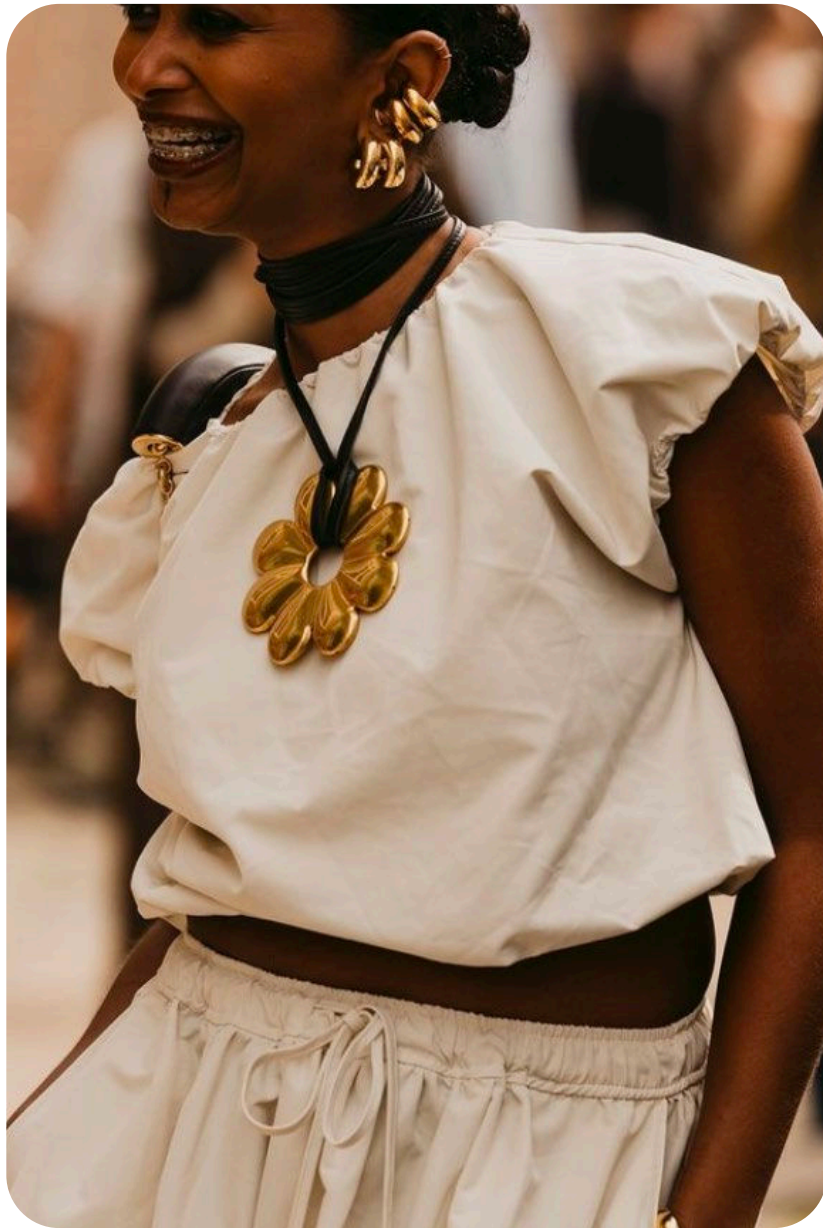


The Garment4 Kopie.jpg



SAFE TREND

SS26 NEW PUFFY VOLUMES



@claireguillon -39.png



zara23.jpg



@2moodstore9.png



tg botanical



ejgorep@255inrtovdktrmpsin00sahjg



philosophy17.jpg



nehera.jpeg

SAFE TREND

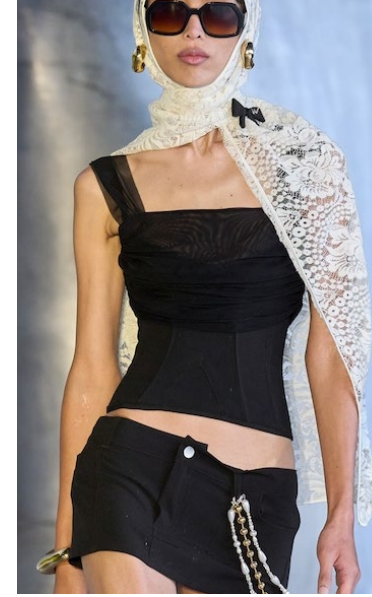
SS26 LADYLIKE STYLES



@weworewhat 3.png



Domino Tan15.jpg



weinsanto



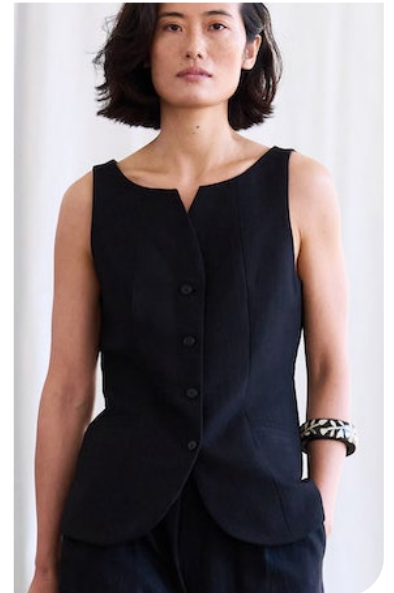
reformation



faithfull5.png



@claireguillon -28.png



Skall10.jpg

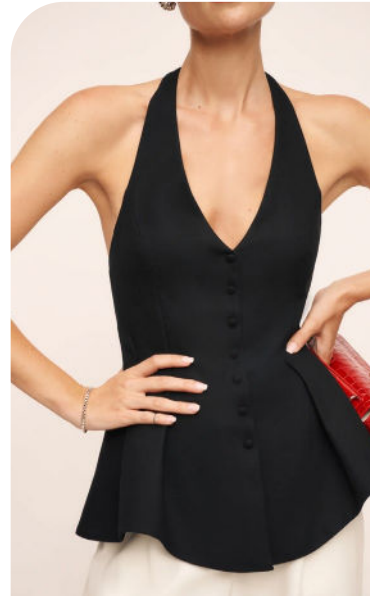


EARLY SIGN

SS26 PEPLUM REVIVAL



Copenhagen Streetstyle 32.jpg



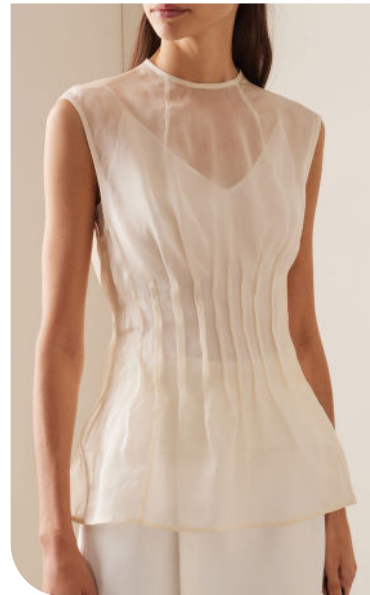
thereformation11.webp



-ganni-.jpg



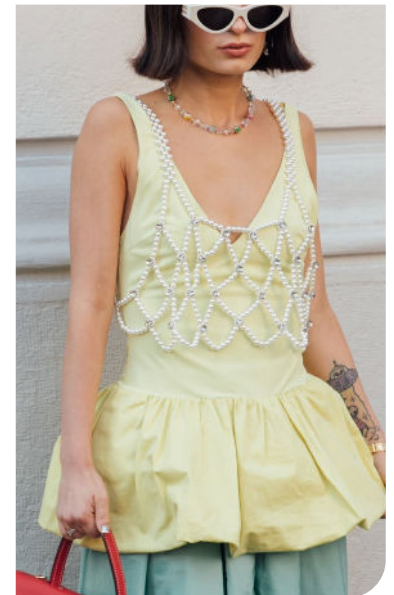
@lalalyliu



khaite



valli20.jpg



milano-str-s25-1080.jpg



EARLY SIGN

SS26 PREPPY BLOUSE



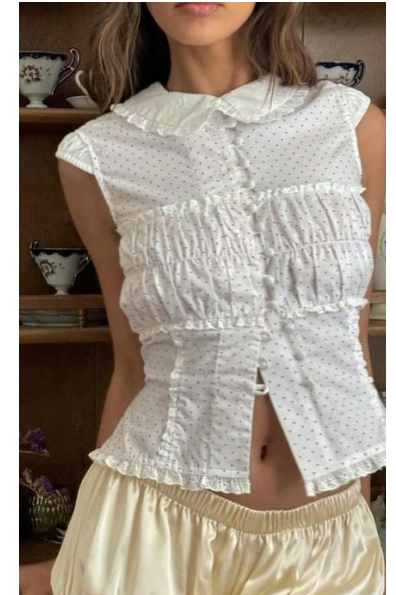
no216.jpg



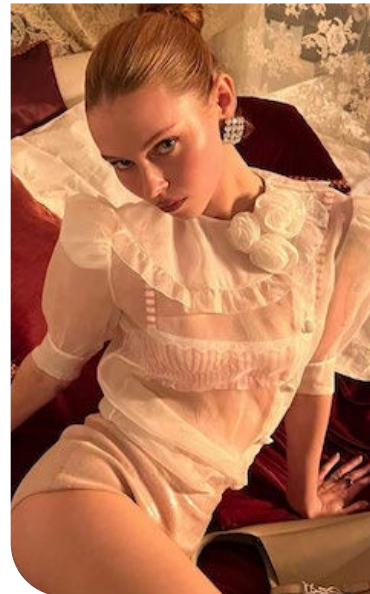
asos.png



urbanoutfitters 5.webp



@mrsgraygubler



@charlottesmurfit1.png



prada18.jpg



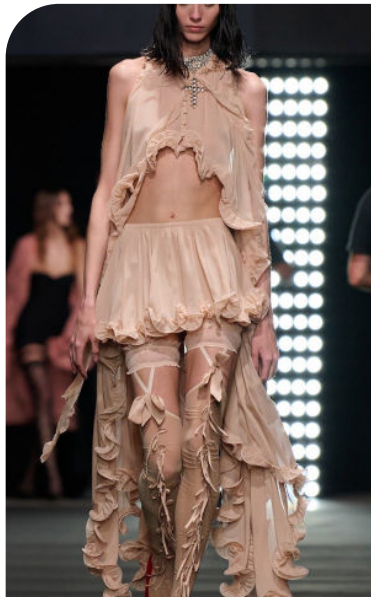
sandyliang.jpeg

EDGY TREND

SS26 LONG ROMANTIC BLOUSE



Rokh16.jpg



aniye records



streetstyle milano 190.jpg



@lalalero



Etro 9.jpg



Freepeople5.webp



blumarine3.jpeg

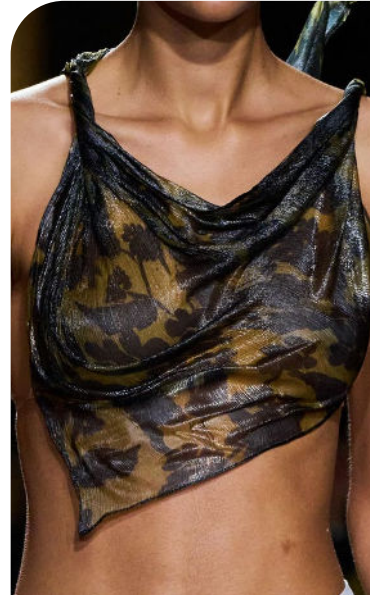


EDGY TREND

SS26 SCARF TOPS



bottega-veneta37.jpg



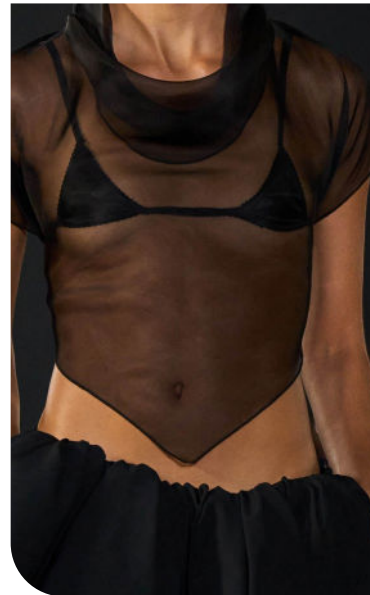
victoria beckham40 (1).jpg



sir



rosie assoulin



vaillant23.jpg



zimmermann50.jpg



Copenhagen Streetstyle 22.jpg



DATA SOURCES & ICONS

TREND GROWTH



MARKET

YEAR ON YEAR TREND GROWTH ON E-COMMERCE



SOCIAL MEDIA

YEAR ON YEAR TREND GROWTH ON INSTAGRAM



CONSUMER INTEREST

YEAR ON YEAR GROWTH OF ONLINE SEARCH VOLUMES



FASHION SHOWS

YEAR ON YEAR TREND GROWTH ON FASHION SHOWS

TREND BEHAVIOR

EDGY TREND

weak signal of a potential micro trend with very high risk

EARLY SIGN

emerging trend with growing perspective but higher risk

SAFE TREND

announced trend with growing perspective and safe risk

BIG TREND

trend with a big magnitude due to high commercial potential and quick adaption

STABLE TREND

trend that is already present in the market with flat growth

LAST CALL

trend with decreasing perspective but still having business potential

TREND MAGNITUDE



MANIFEST

AN ICONIC PRODUCT THAT IS A STABLE TREND OF LARGE MAGNITUDE WITH CONFIRMED COMMERCIAL SUCCESS



INVEST

A CORE PRODUCT REPRESENTING A STEADILY GROWING TREND OF MODERATE MAGNITUDE WITH COMMERCIAL POTENTIAL



TEST

A STATEMENT PRODUCT WITH GROWING PERSPECTIVE BUT SMALLER MAGNITUDE AND HIGHER RISK



DATA TO DRIVE

01 CREATIVITY

02 STRATEGY

03 SUSTAINABILITY



LIVETREND

THANK YOU!

You may not copy, reproduce, distribute, publish, display, perform, modify, create derivative works, transmit, or in any way exploit any such content, nor may you distribute any part of this content over any network, sell or offer it for sale, or use such content to construct any kind of database. You may not alter or remove any copyright or other notice from copies of the content on any Livetrend report.

If you have further needs, please contact us via chat.