



WOMENSWEAR
SS 2026
FORECASTING
SOFT
ACCESSORIES



LIVETREND

SS26 SOFT ACCESSORIES INTRODUCTION



FORECAST

Elegance meets Boho Spirits.

Spring/Summer 2026 soft accessories bring a dreamy, stylish flair to any wardrobe, with key trends rooted in versatility and personality.

Headwear takes center stage with foulards and sunhats, offering a chic, breezy vacation vibe. These pieces elevate even the simplest outfits, blending functionality with effortless elegance. Crochet and raffia styles also add a sense of authentic bohemian summer days here. Neckwear echoes the sophistication of the season, as neckerchiefs and slim foulards make a strong statement, adding polished or playful touches to both daytime and evening ensembles. Belts for the summer lean into a bohemian and bold aesthetic, with intricate patterns, natural textures, and adventurous designs bringing a carefree yet impactful energy. Legwear and armwear focus on dreamy lace styles, perfect for evoking romance and softness, while maintaining versatility for layering or standalone impact.

Together, SS26 soft accessories paint a picture of relaxed luxury and creative styling, allowing wearers to mix and match elements for a fresh, elevated approach to warm-weather dressing.

This forecasting report is realized crossreferencing LIVETREND data from several sources to empower the expertise of our Trend Analysts to forecast the trends with concrete and quantitative information. Find the related data sources and icons on the last slides.

[ACCESS ALL IMAGES
CLICKING HERE](#)



KEY ITEMS

HEADWEAR

The SS26 headwear range offers a versatile and fashion-forward array of styles to elevate any wardrobe. Leading the collection are headscarves, spanning from bucolic bandanas to elegant long foulard scarves, perfect for adding a touch of sophistication or bohemian charm. New crochet options bring texture and artistry to the mix, appearing not only in scarves but also in caps and beach hats. Crochet's artisanal appeal complements the growing popularity of straw hats, which range from classic sunhats to bold fringed and visor styles. Voluminous sunhats exude ladylike elegance, ideal for making a statement while staying protected from the sun. Sporty headbands remain a staple in the collection, appealing to both activewear and casual styling needs. Basecaps also hold their ground, with classic designs catering to minimalist tastes, while maximal, embellished versions attract fashion-forward clients seeking standout pieces. A fresh addition for the season is the sailor hat, bringing a preppy allure that feels both playful and refined. Meanwhile, edgy flat caps offer a contemporary twist for those seeking something more unconventional.



LIVETREND

BIG TREND

SS26 THE BUCOLIC HEADSCARF



Sandy Liang.jpg



freepeople 11.webp



ravereview4.jpg



Christian Weijnants 4.jpg



@psritabus.png



@emilindlev10.png



streetstyle copenhagen_3.jpg

SOFT ACCESSORIES

WOMENSWEAR

FORECASTING

SPRING/SUMMER 2026



BIG TREND

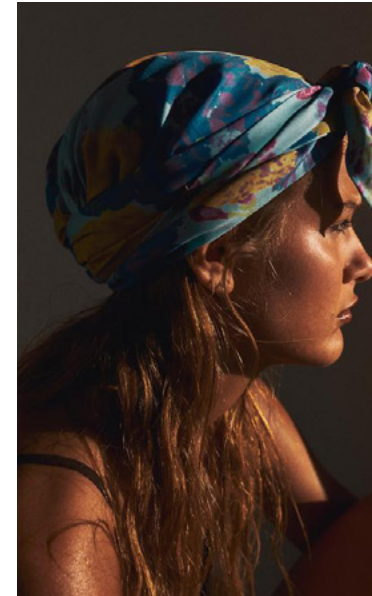
SS26 THE LONG HEADSCARF



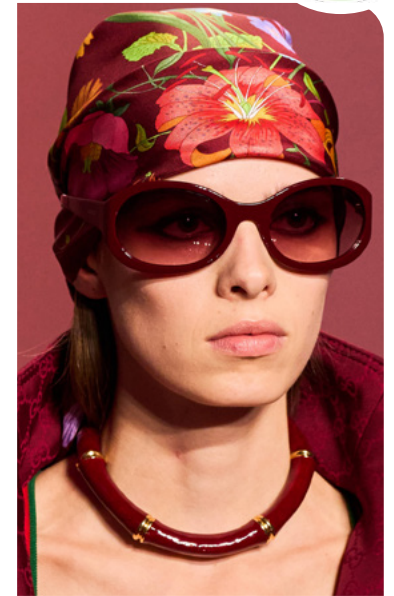
@vprojectmodels9.jpg



Elie Saab.jpg



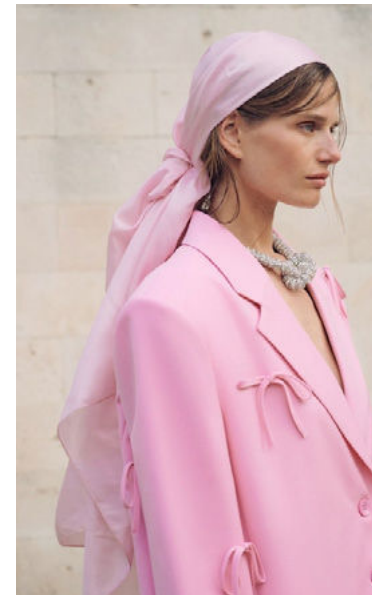
zara 8.jpg



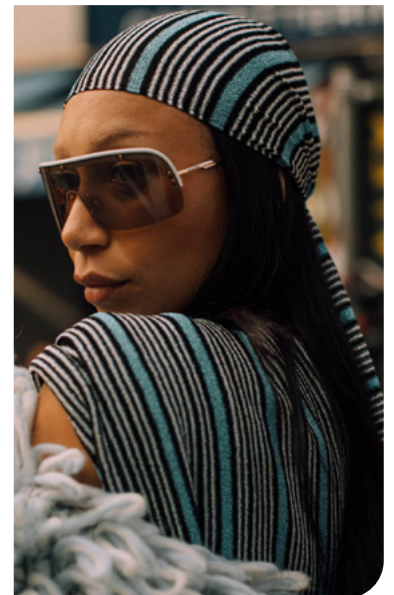
Gucci 26.jpg



freepeople 12.webp



choux.ru_3.png



streetstyle milan_68.jpg

STABLE TREND

SS26 THE SPORTY HEADBAND



@vprojectmodels32.png



streetstyle milan_51.jpg



streetstyle milan_52.jpg



d&g_1.jpg



streetstyle milan_3.jpg



avavav-003.jpg



dior-020.jpg

STABLE TREND

SS26 THE HAIR BOW



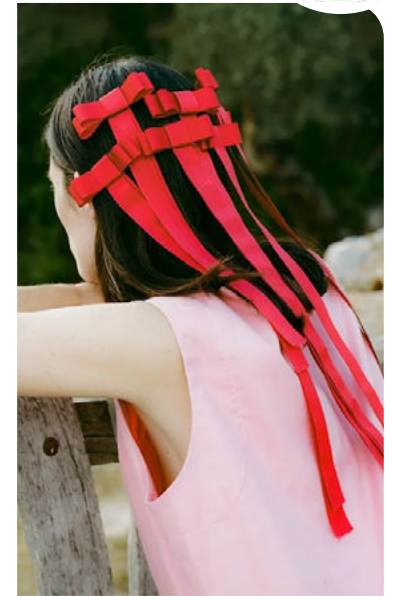
zara 7.jpg



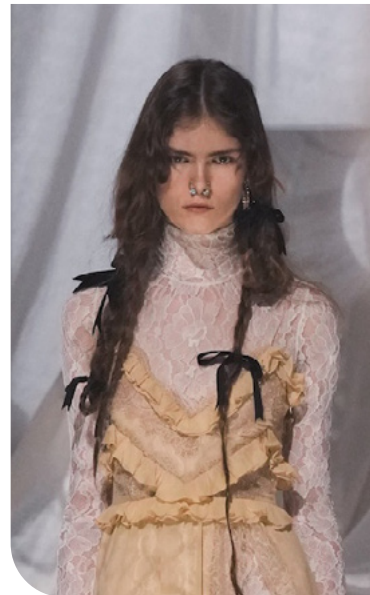
streetstyle milan_77.jpg



By Ramona Wang 3.jpeg



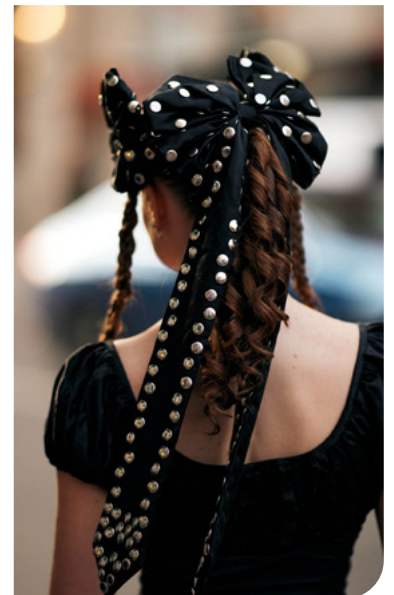
@ceciliarenard_7.png



valentino 81.jpg



beccaria-019.jpg



streetstyle london_261.jpg



streetstyle milan_44.jpg



hilfiger-023.jpg



zara 9.jpg

CLASSIC SPORTY



streetstyle copenhagen_13.jpg



pinterest1.jpg



Vaquera.jpg

ADD-ON MAXIMALISM



gucci-029.jpg



louisvuitton_10.jpg



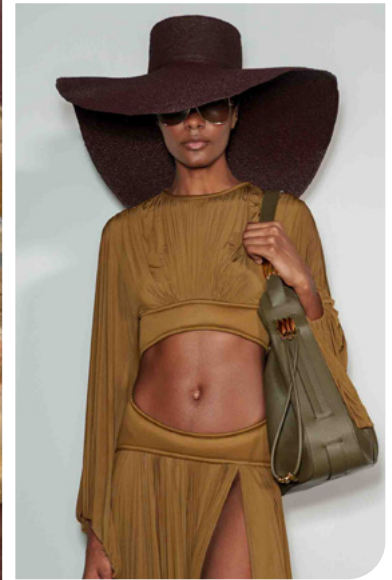
louisvuitton_10.jpg



amalienielsenn5.png



Valentino.jpg



Zimmermann.jpg

LADYLIKE

EXTRA FLOUNCY



Copenhagen Streetstyle 21.jpg



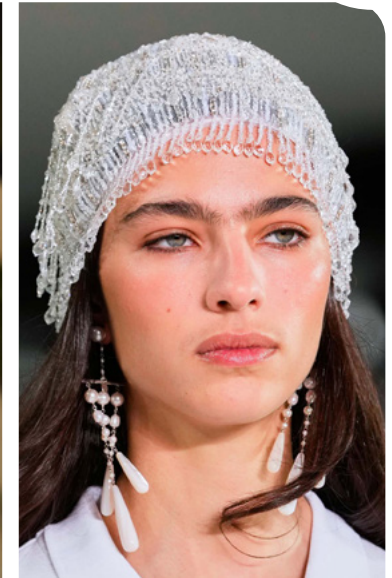
moschino-120.jpg



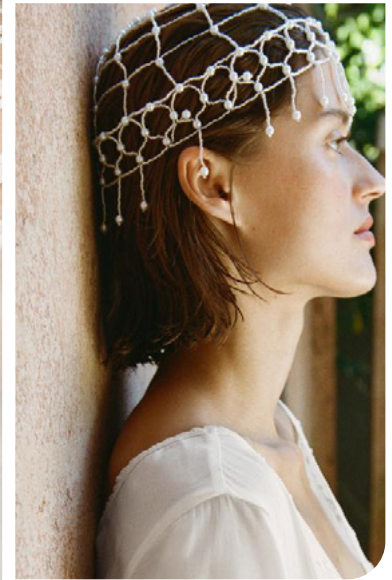
streetstyle copenhagen_54.jpg



aniye-records-030.jpg



ralph lauren 32.jpg



zara_lingerie_31.jpg

THE ESSENTIAL

BEJEWELLED 20s LOOK



elie-saab-026.jpg



Antonio Marras.jpg



sarawong-006.jpg



skall4.png



mame-kurogouchi-po-s25-032-11462867.jpg



bottegaveneta_13.jpg

RAINPROOF BASIC

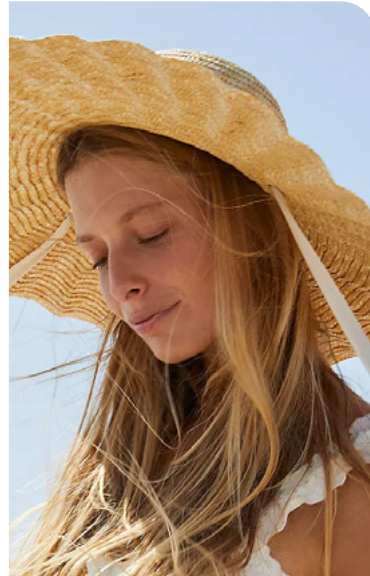
FISHERMAN

SAFE TREND

SS26 THE STRAW HAT



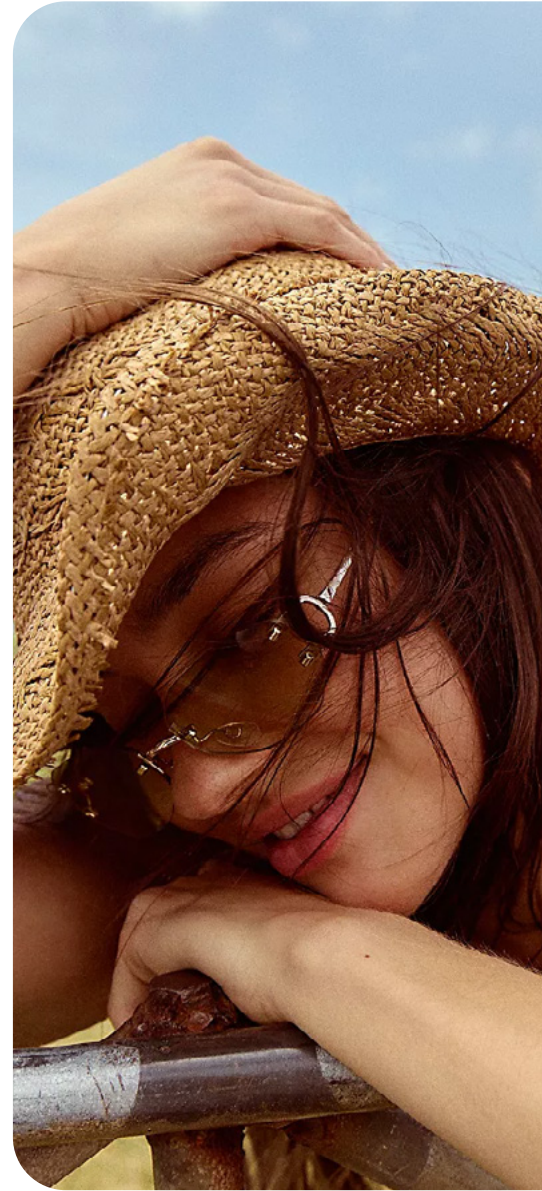
@helsastudio_10.png



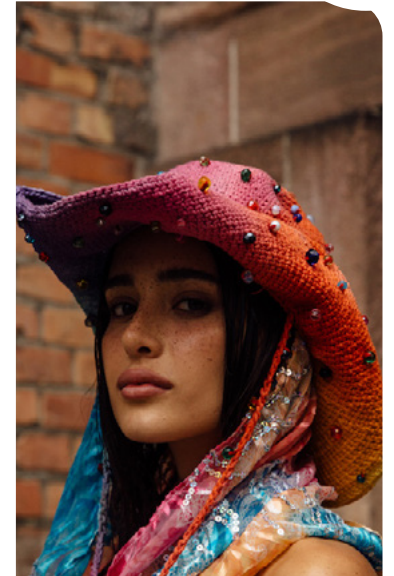
freepeople 13.webp



freepeople 15.webp



freepeople 21.webp



copenhagen-str-s25-0756.jpg



@dolorescafier.png

COUNTRY SUNHAT

WESTERN RAFFIA

CROCHET HEADBAND



tanya taylor 1.jpg



overlace2.jpg



@linda.sza 6.png

CROCHET BEACH HAT



zara 29.jpg



freepeople 18.webp



freepeople 14.webp

EARLY SIGN

SS26 THE SAILOR HAT



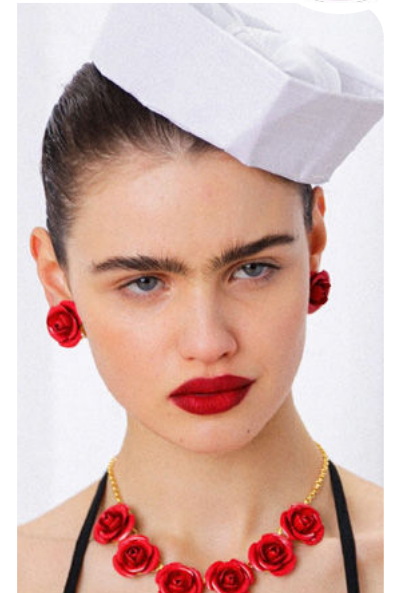
@vprojectmodels33.jpg



streetstyle milan_127.jpg



copenhagen-str-s25-0421.jpg



rowenrose24.png



kimhekim-060.jpg



moschino-s25-003.jpg



streetstyle milan_60.jpg

FRINGED HAT



Antonio Marras_1.jpg



bottega-veneta-024.jpg



kors-021.jpg

RAFFIA VISOR



prada-004.jpg



vivienne-tam-005.jpg



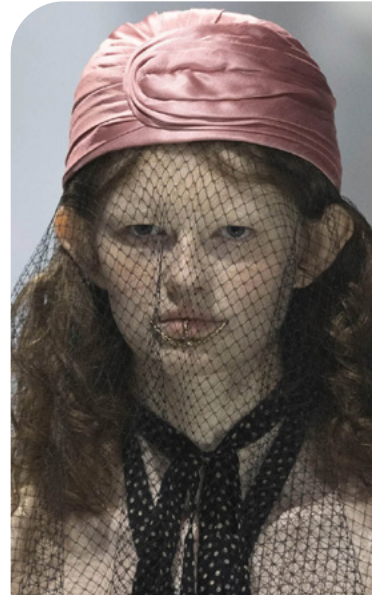
sarawong-022.jpg

EARLY SIGN

SS26 THE TURBAN



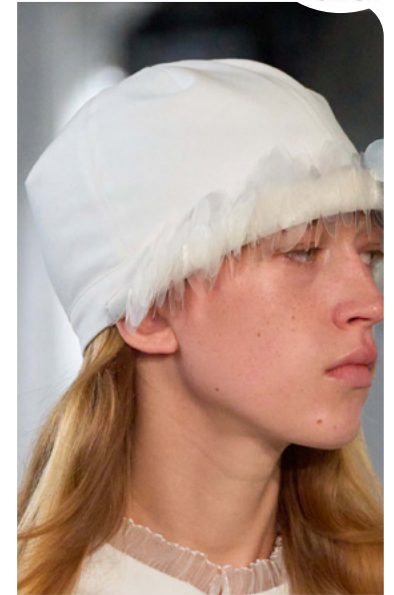
MaxMara 11.jpg



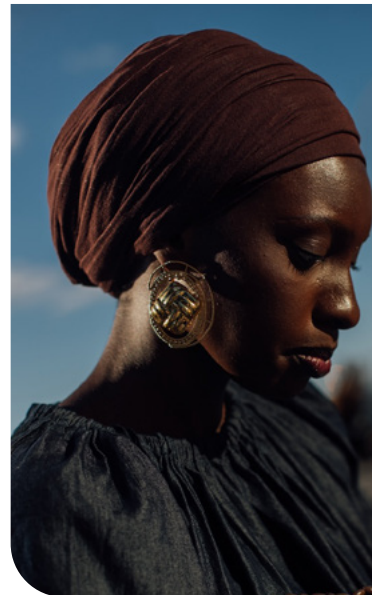
valentino_3.jpg



chloe_12.jpg



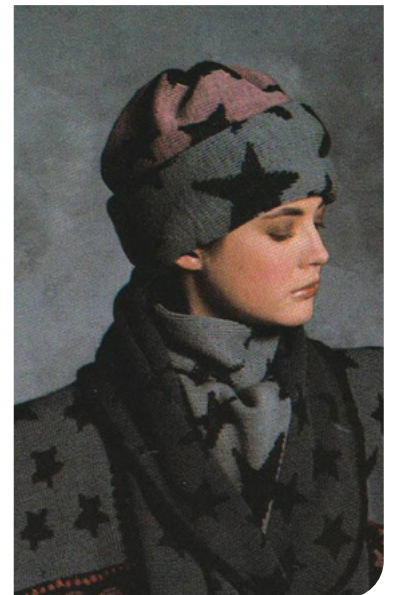
pasqualetti-010.jpg



NY Streetstyle 10.jpg



James Cochrane.webp



turtl_908666674733592888_0812_2019

SOFT ACCESSORIES

WOMENSWEAR

FORECASTING

SPRING/SUMMER 2026

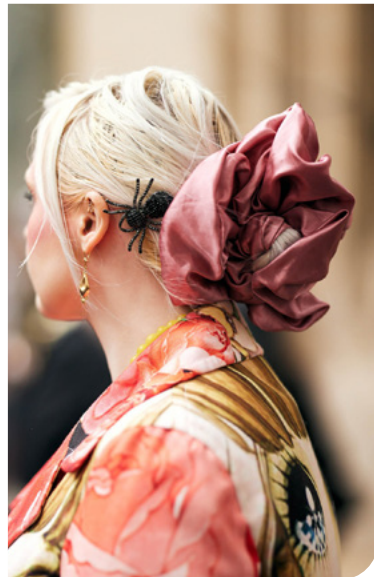
EXTREME SCRUNCHIE



streetstyle copenhagen_5.jpg



streetstyle copenhagen_6.jpg



streetstyle paris_223.jpg

FLORAL HAIRTIE



streetstyle copenhagen_56.jpg



aliceinwondercloset.jpeg



streetstyle copenhagen_46.jpg



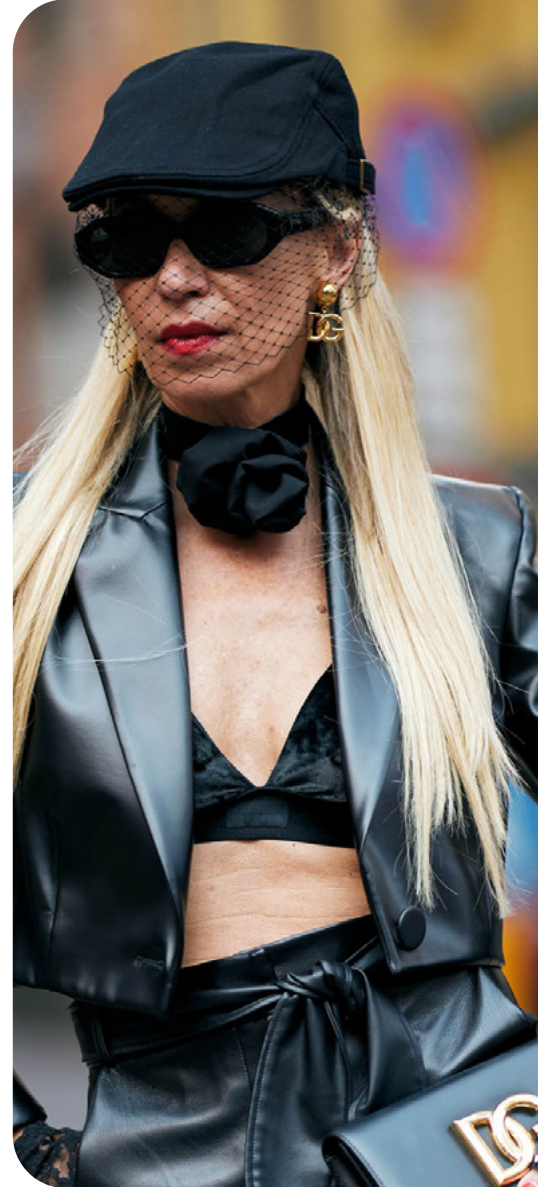
knwls-012.jpg



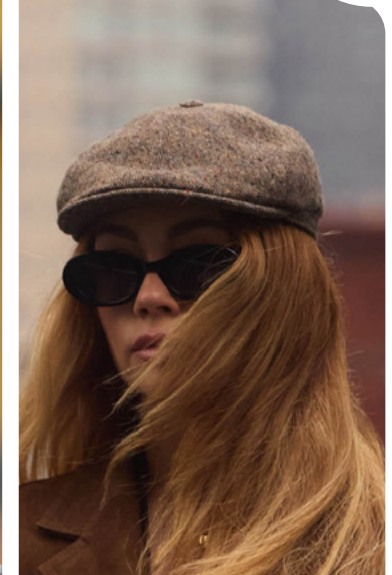
kiko-kostadinov-089.jpg



emporio-armani-049.jpg



streetstyle milan_40.jpg



streetstyle ny_237.jpg



streetstyle paris_207.jpg

COUTURE STYLE

MEN'S LOOK





KEY ITEMS

NECKWEAR

SS26 neckwear brings a fresh twist to timeless accessories. Leading the range are neckerchiefs, from essential bandanas to chic foulards, adding versatility and flair to any outfit. Ties remain a staple but are reimagined with playful twists, such as bow-tie styling or bold materials and prints. The slim scarf, a Y2K favorite, continues to dominate, often adorned with florals or tied creatively as a choker scarf for a modern edge. For a touch of drama, the stole embraces the spirit of maximalism, offering a fun, extravagant addition to the season's vibrant aesthetic. This collection seamlessly blends classic styles with contemporary elements, ensuring every piece makes a statement. Whether it's understated elegance or bold exuberance, SS26 neckwear is all about versatility, creativity, and individuality.



LIVETREND



The Garment16.jpg



prada_1.jpg



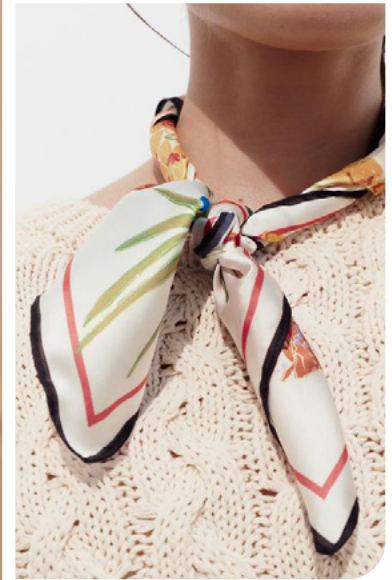
ganni-clp-s25-009.jpg



Ermanno Scervino 14.jpg



streetstyle milan_6.jpg



zara 4.jpg

BASIC BANDANAS

CHIC FOULARDS

BIG TREND

SS26 THE SLIM SCARF



streetstyle milan_140.jpg



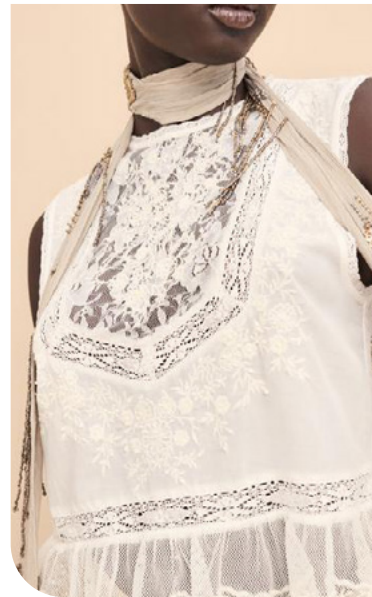
streetstyle paris_201.jpg



zimmermann 4.jpg



no214.jpg



zara_lingerie_42.jpg



fiorucci 4.jpg



streetstyle copenhagen_18.jpg

SOFT ACCESSORIES

WOMENSWEAR

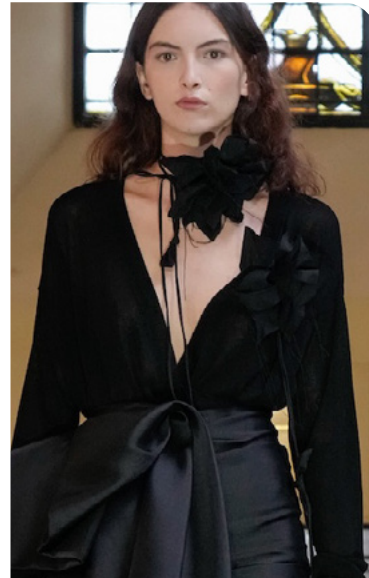
FORECASTING

SPRING/SUMMER 2026





streetstyle copenhagen_59.jpg

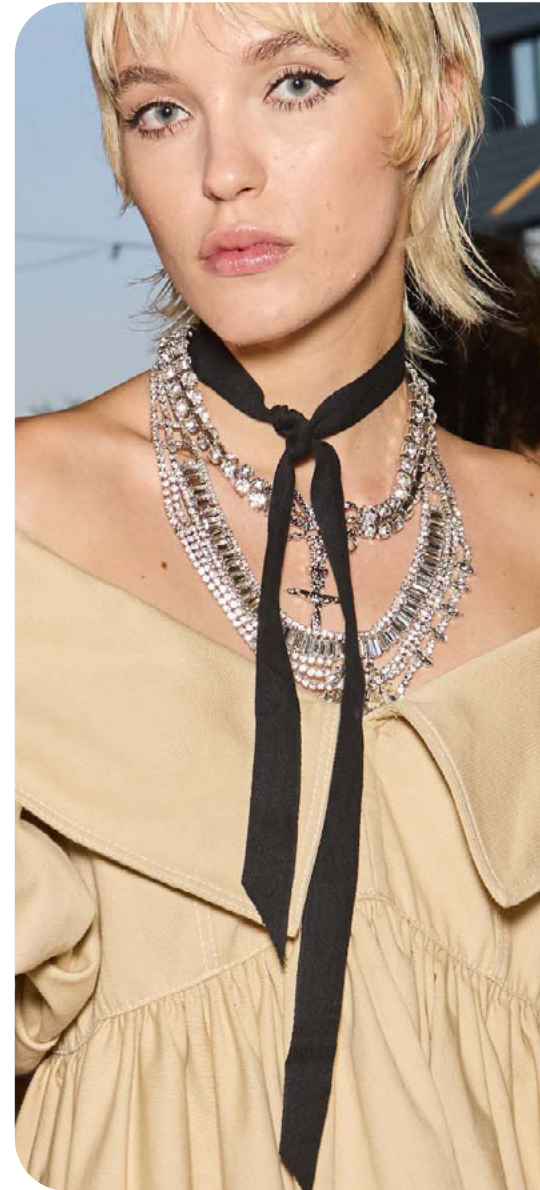


Marques Almeida2.jpg

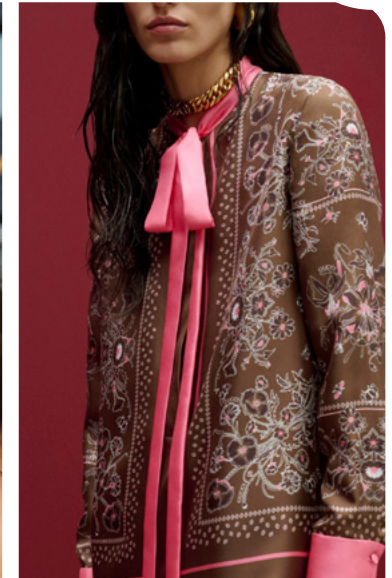


zara 18.jpg

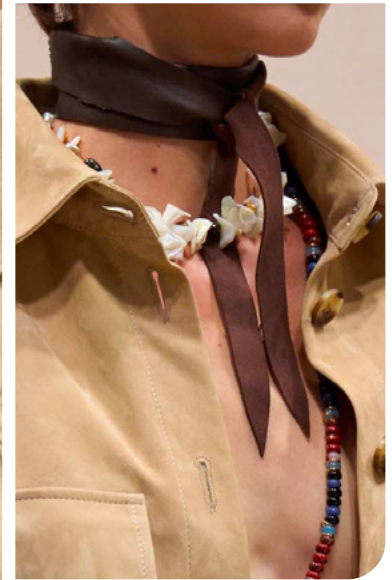
FLORAL CHOKER



aniye-records-056.jpg



guccipf2025collectiontheimpression025cat.jpg



zimmermann4.jpg

TIED-UP LOOK



By-Malene-Birger-PreFall-PO-F25-014.jpg



heliot-emil-047.jpg



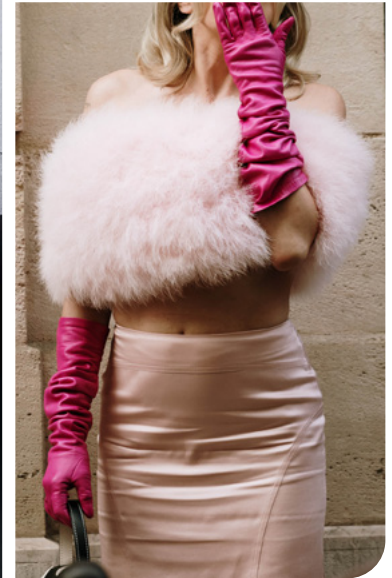
the garment 3.jpg



ottolinger-045.jpg



streetstyle paris_142.jpg



streetstyle paris_141.jpg

DRAPED STYLE

FANCY & GLAMOROUS





KEY ITEMS

LEGS, ARMS & BELTS

For Spring/Summer 2026, leg and armwear trends exude playful versatility and statement aesthetics. Lace details dominate gloves and legwear, infusing an alluring coquette vibe perfect for elevating both casual and formal ensembles. Belts embrace a bold duality, with western-inspired designs leading the way, evoking rugged charm. Y2K low-rise leather belts make a nostalgic comeback, serving as standout accessories with a rebellious edge. Jewel-belts amp up the maximalist energy, transforming functional pieces into eye-catching adornments. This season's maximalism extends further with fancy socks in ornate designs and eccentric armwear, offering endless opportunities for layering and self-expression. Together, these elements weave a narrative of daring contrasts, from romantic lace to cowboy-inspired belts, ensuring that every look tells a unique, fashion-forward story. SS26 leg, armwear, and belts promise to be the ultimate styling tools for creating vibrant, personality-packed outfits.



LIVETREND



zara_24.jpg



streetstyle paris_344 (1).jpg



Johanna Ortiz.jpg



streetstyle paris_118.jpg



van-noten-127.jpg

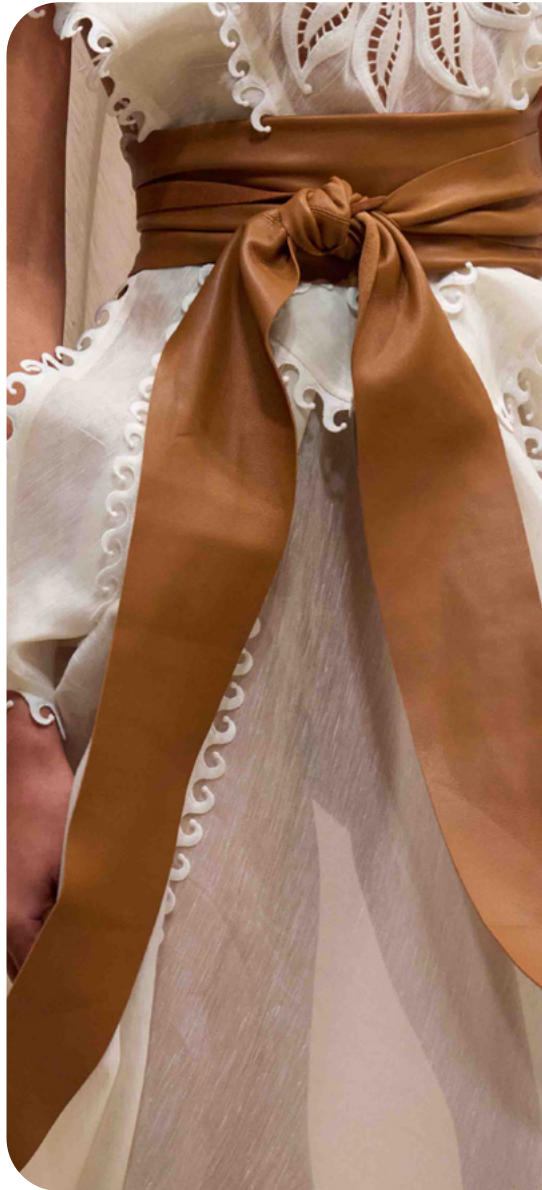


marant_13.jpg

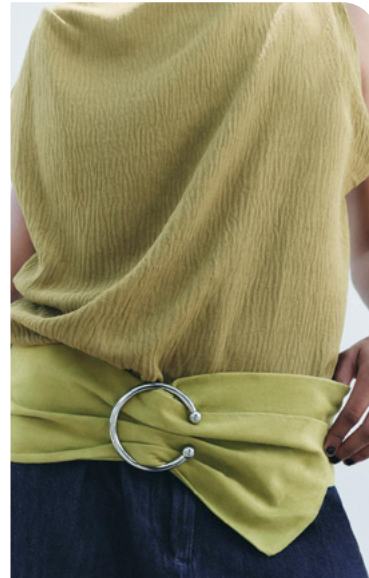
CHUNKY COWBOW BUCKLES

STUDED BOHO BELT





Zimmermann_1.jpg



zara 5.jpg



chanel_41.jpg



streetstyle paris_384.jpg



freepeople 1.webp



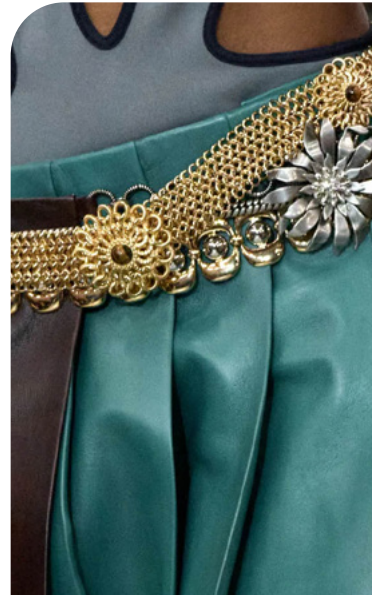
anteprima-090.jpg

SOFT LEATHERS

LOW-RISE MANIA



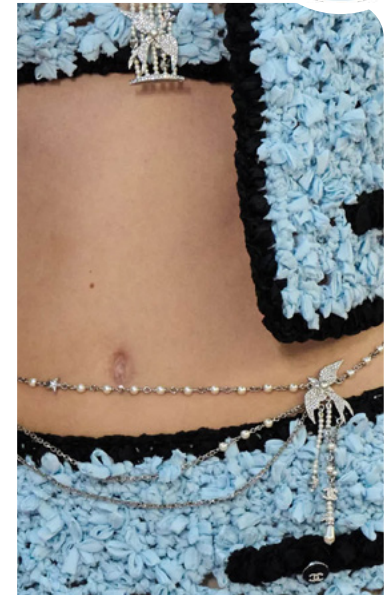
miumiu.jpg



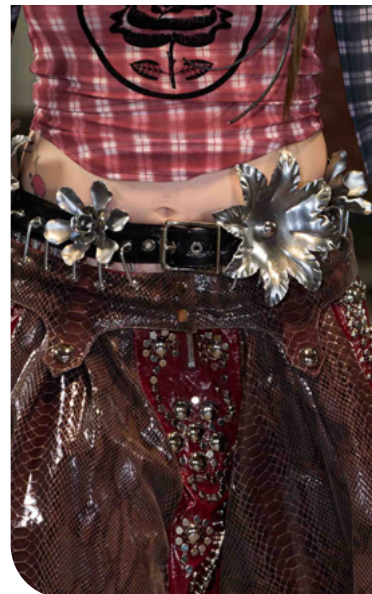
miumiu_5.jpg



rave-review-041.jpg



chanel_28.jpg



Chopova Lowena.jpg



vivetta-053.jpg



zimo-037.jpg

BIG TREND

SS26 THE KNEE SOCK



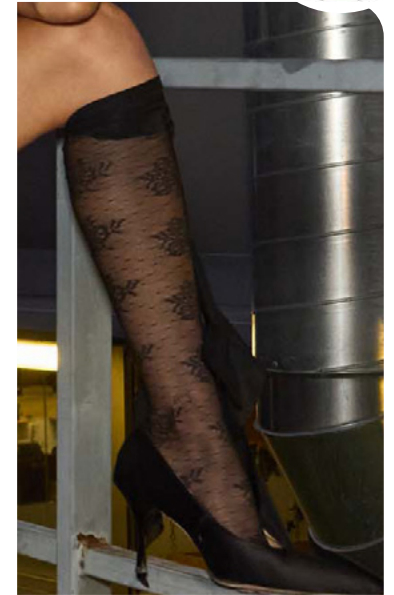
demeulemeester72.jpg



zara_53.jpg



erdem_5.jpg



aniye-records-091.jpg



fiorucci-089.jpg



streetstyle paris_100.jpg



r3-prefet2025-colection-the-impression-089-scald.jpg



streetstyle copenhagen_24.jpg



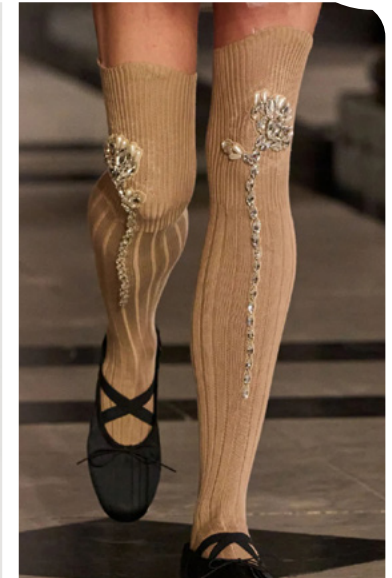
freepeople 6.webp



SelfPortrait Fall 2024 Runway The Impression 06 screenshot.jpg



fendi_7.jpg



erdem_7.jpg



freepeople 2.webp

COQUETTE ADD-ONS

DELICATE EMBELLISHED





luis-de-javier-073.jpg

COQUETTE WHITES



SaffPotat#2024RunwayTheImpression004scat.jpg



valentino_11.jpg



@freedomtag.jpg

REWORKED LOLITA



freepeople 5.webp



streetstyle copenhagen_34.jpg





luis-de-javier-059.jpg



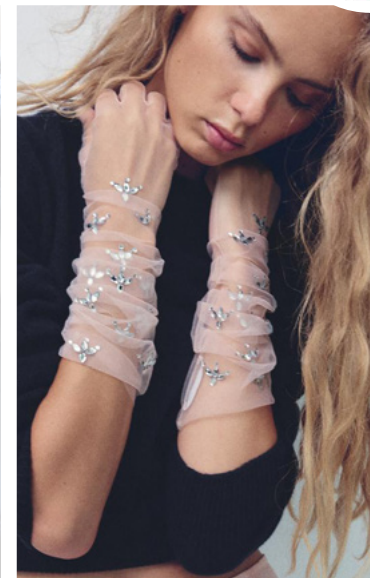
valentino_21.jpg



@lauradeannafanning.jpg



weinsanto-065.jpg



zara_lingerie_60.jpg



atlein-054.jpg

LACE STYLES

INVISIBLY SHEER



ARMWEAR



miu-miu-067.jpg



ph5-059.jpg



ranu#kape#2025cab#in#the#pessin#034#cab#jpg

LONG ARMWEAR

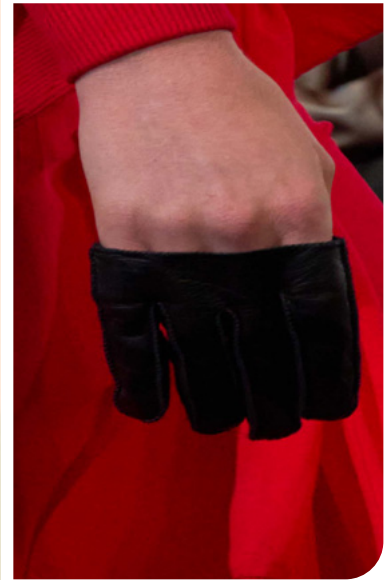
MINI RACER GLOVE



gucci_9.jpg



consistence 9.jpg



off-white-037.jpg

RACER MINI



DATA SOURCES & ICONS

TREND GROWTH



MARKET

YEAR ON YEAR TREND GROWTH ON E-COMMERCE



SOCIAL MEDIA

YEAR ON YEAR TREND GROWTH ON INSTAGRAM



CONSUMER INTEREST

YEAR ON YEAR GROWTH OF ONLINE SEARCH VOLUMES



FASHION SHOWS

YEAR ON YEAR TREND GROWTH ON FASHION SHOWS

TREND BEHAVIOR

EDGY TREND

weak signal of a potential micro trend with very high risk

EARLY SIGN

emerging trend with growing perspective but higher risk

SAFE TREND

announced trend with growing perspective and safe risk

BIG TREND

trend with a big magnitude due to high commercial potential and quick adaption

STABLE TREND

trend that is already present in the market with flat growth

LAST CALL

trend with decreasing perspective but still having business potential

TREND MAGNITUDE



MANIFEST

AN ICONIC PRODUCT THAT IS A STABLE TREND OF LARGE MAGNITUDE WITH CONFIRMED COMMERCIAL SUCCESS



INVEST

A CORE PRODUCT REPRESENTING A STEADILY GROWING TREND OF MODERATE MAGNITUDE WITH COMMERCIAL POTENTIAL



TEST

A STATEMENT PRODUCT WITH GROWING PERSPECTIVE BUT SMALLER MAGNITUDE AND HIGHER RISK



DATA TO DRIVE

01 CREATIVITY

02 STRATEGY

03 SUSTAINABILITY



LIVETREND

THANK YOU!

You may not copy, reproduce, distribute, publish, display, perform, modify, create derivative works, transmit, or in any way exploit any such content, nor may you distribute any part of this content over any network, sell or offer it for sale, or use such content to construct any kind of database. You may not alter or remove any copyright or other notice from copies of the content on any Livetrend report.

If you have further needs, please contact us via chat.