



**WOMENSWEAR
FORECAST
SPRING/SUMMER
2026
LINGERIE
MACROTRENDS
& KEY ITEMS**



LIVETREND

MACROTRENDS SS26 INTRODUCTION



FORECAST

SS26: POWERSHIFTS

In the spirit of the SS26 Powershifts, lingerie is poised to evolve into a realm of intricate beauty and refined femininity, marking a departure from minimalist comfort towards an embrace of intricate, nostalgic designs. This shift signifies a movement away from purely functional simplicity, inviting wearers into a world of dainty details, artisanal craftsmanship, and romantic embellishments that celebrate a more intimate, coquette-inspired elegance. The new era of lingerie reimagines classic styles, drawing inspiration from vintage aesthetics—think delicate lace trims, tiny bows, scalloped edges, and soft, pastel hues. These nostalgic features are given a modern twist, creating pieces that evoke a sense of dreamy femininity while resonating with a contemporary audience. Each piece is designed not only for comfort but also for emotional connection, encouraging wearers to embrace their individuality and femininity in a balanced, mindful way. In 2026, lingerie becomes more than just an undergarment; it's a personal exploration of self-expression and a way to connect with one's inner essence amid an ever-evolving world.

*This forecasting report is based on innovative LIVETREND Data and the expertise of Trend Analysts.
Find the relating icons & stamps on the last slides.*

[ACCESS ALL IMAGES
CLICKING HERE](#)

PALETTE LINGERIE

Boulder
14-1110 TCX

Catawba Grape
19-1621 TCX

Vivacious
19-2045 TCX

Beetroot Purple
18-2143 TCX

Pomegranate
19-1930 TCX

Poppy Red
17-1667 TCX

Sunburst
13-1030 TCX

Shell Pink
16-1632 TCX

Peachy Keen
19-2045 TCX

Carinaria
12-1303 TCX

Violet Ice
15-2706 TCX

Lavender Blue
14-3905TCX

Fairest Jade
12-6206 TCX

Charlock
12-0530 TCX

Lime Cream
12-0312 TCX

Cabbage
13-5714 TCX

Ice Castle
11-4606TCX

Shaded Spruce
19-4524 TCX

Patriot Blue
19-3925 TCX

Dutch Canal
14-4124 TCX

Skyride
14-4215 TCX

Shark
18-1703 TCX

Orchid bouquet
15-3412 TCX

Purple Corallites
18-33839 TCX



LINGERIE **MACROTRENDS**

TREND **ELEMENTARY**



@annadaki (1)



Capture



salva lopez

ELEMENTARY

The Elementary lingerie trend exudes an effortless elegance that meets the daily demands of modern life. Rooted in simplicity, it combines sleek, minimalist designs with an emphasis on organic, breathable fabrics that move gently with the body, embodying a sense of freedom and ease.

The silhouettes are thoughtfully structured to complement the natural form, using lightweight, airy materials that provide a barely-there feel, perfect for women who value both comfort and style.

This collection taps into soothing pastels—soft blushes, tranquil lavenders, and serene mints—that bring a rejuvenating calm to the wearer. These hues, paired with refined yet subtle detailing, enhance the appeal of a clean and sophisticated look, ideal for layering under everyday wear or as standalone pieces that instill confidence.

The Elementary is designed for the woman who seeks harmony between elegance and functionality, making it an essential choice for a lingerie drawer that prioritizes comfort without compromising on style.

MOOD ELEMENTARY



zara



pinterest



ICONE LINGERIE (2).jpg



pinterest



ignant



CalvinKlein_14



@ignant _31.png



Chantelle

SOFT ACTIVE - MINIMAL WELL-BEING - URBAN ESSENTIALS - CONTEMPORARY PURITY

COLOR PALETTE **ELEMENTARY**



valentinacameranesi2.png

ICONE LINGERIE (1).jpg

breath slope.jpg

StudioAnnaDawson_PortalBench-728x910.jpg

Contemporary tranquility.

The Elementary lingerie color palette is a calming blend of serene pastels, each hue selected to evoke a sense of tranquility and rejuvenation. Soft, minty greens refresh the senses, adding a subtle vibrancy that feels both uplifting and restorative. Sandy beige tones introduce a grounded warmth, blending seamlessly with any skin tone and enhancing the collection's understated elegance. Muted mauve greys bring a sophisticated depth, creating a gentle contrast that feels both modern and timeless. Sky blues add a breath of fresh air, reminiscent of open spaces and endless horizons, invoking a sense of calm with every wear. Together, these hues create a harmonious palette that is both delicate and versatile, designed to instill a feeling of ease and comfort. Each shade complements the airy, lightweight fabrics, allowing the pieces to feel as soft and natural as they look, embodying an effortless elegance perfect for everyday wear.

KEY MATERIAL **ELEMENTARY**



COMFORT COTTONS

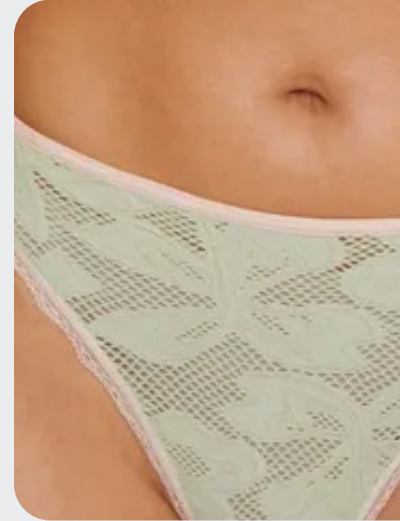


@intimissimi4.png



freepeople 8.webp

ELEVATED MESH



Nenesparis

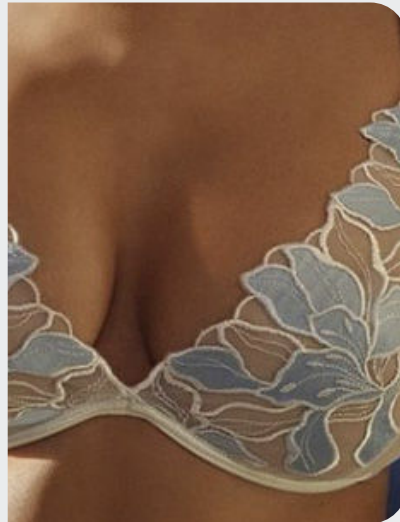


esber-clp-s25-003.jpg

SHADOW FLORALS

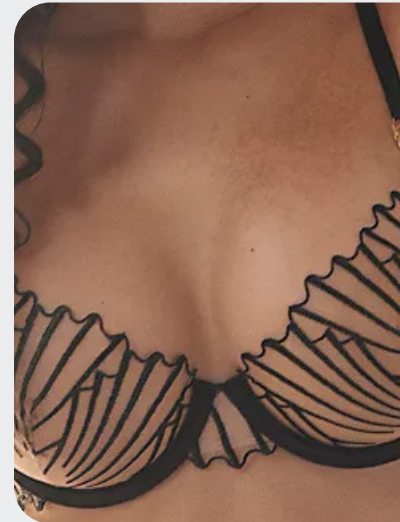


commando

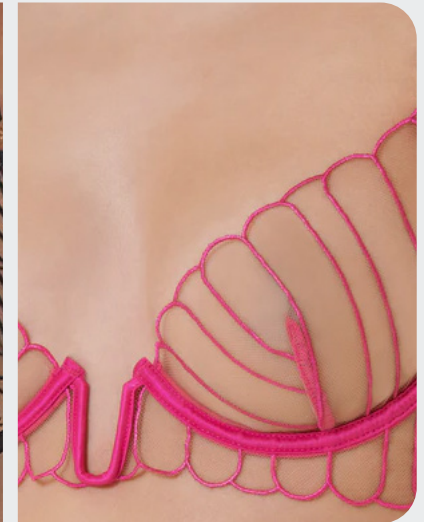


@intimissimi6.png

LIGHT LINES



freepeople 5



bluebella (2).webp

KEY DETAILS **ELEMENTARY**



MEN INSPIRED ELASTIC BAND



@lovestoriesintimates9.png



Versace.avif

MINIMAL SIGNATURES



Savage Fenty

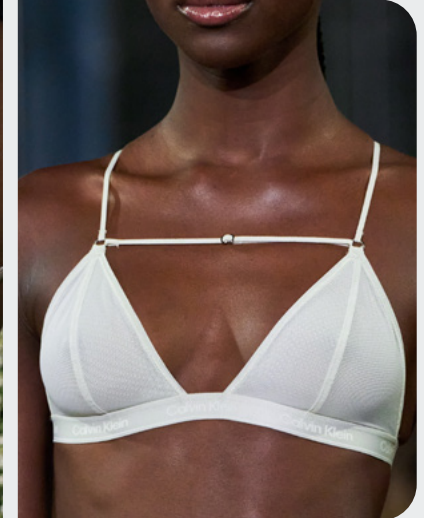


Icône

ELEVATED STRAPS



Bevza

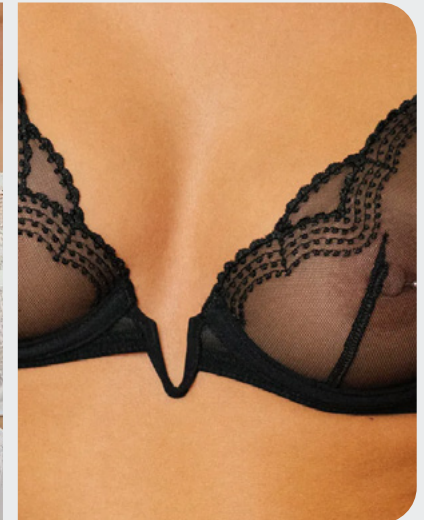


Dojaka

SCULPTURAL WIRES



freepeople 12



Savage Fenty

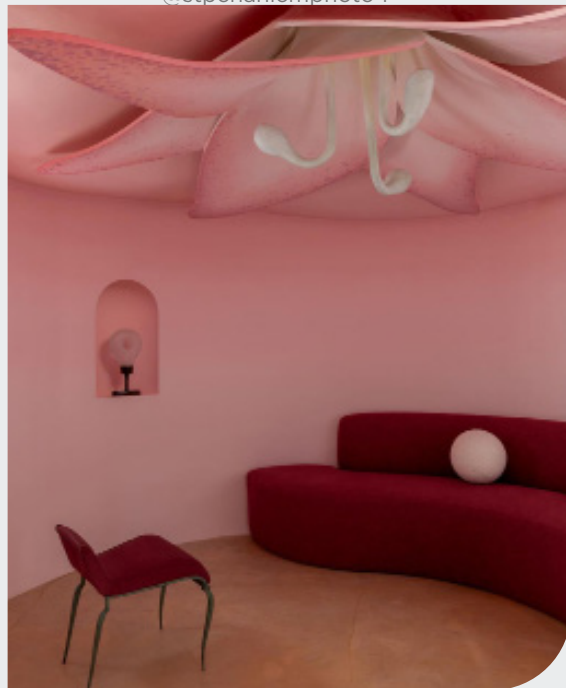
TREND **GUILTY PLEASURES**



Fleur du mal



@stpehaniemphoto4



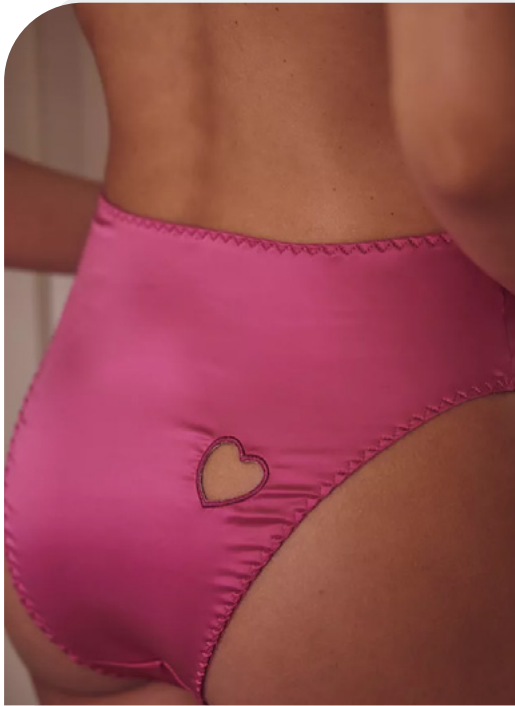
PINTEREST

GUILTY PLEASURES

The Guilty Pleasure lingerie trend is an audacious invitation to embrace every desire without restraint. This collection explores the tension between innocence and allure, merging playful innocence with striking seduction. With vibrant, high-energy colors like neon pinks and bold reds, it leans into the theatrical. The color palette feels like a mix of candy-coated temptation and fierce sensuality, setting the stage for eye-catching contrasts that draw in a daring, unapologetic feminine spirit.

Designs borrow visual cues from bondage aesthetics and doll-like charm to bring forward an aesthetic of provocative playfulness. Expect strappy elements, harnesses, and cutouts that accentuate curves with a touch of mischief, while girly, fruity motifs and flirty ruffles soften the edge, adding a quirky innocence to the pieces. This blend of sweet and sinful details—like delicate bows paired with provocative mesh or lace—creates a tension that's both light-hearted and intensely sensual. The Guilty Pleasure collection embraces a super-bold femininity, balancing feigned innocence with a raw, almost rebellious sensuality. It's a visual feast that invites anyone who wears it to playfully indulge their "forbidden" side, exploring their confidence with every bold cut, teasing detail, and unexpected color pop. In essence, it's a modern celebration of feminine charm that's cheeky, fearless, and irresistibly seductive.

MOOD **GUILTY PLEASURES**



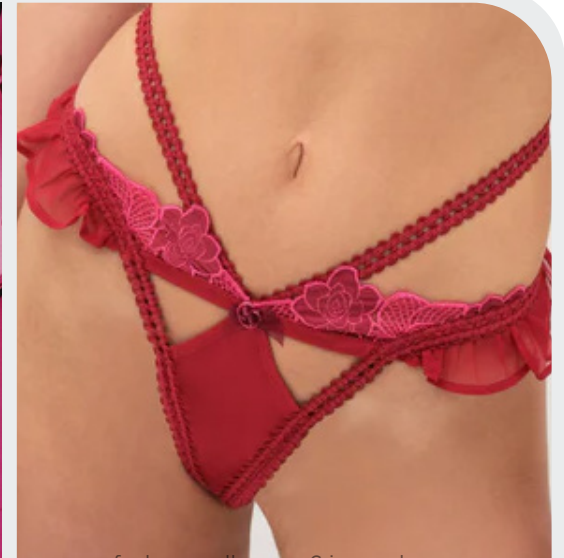
freepeople 74



@maonamicoud7



@maisonalala



forloveandlemons6.jpg.webp



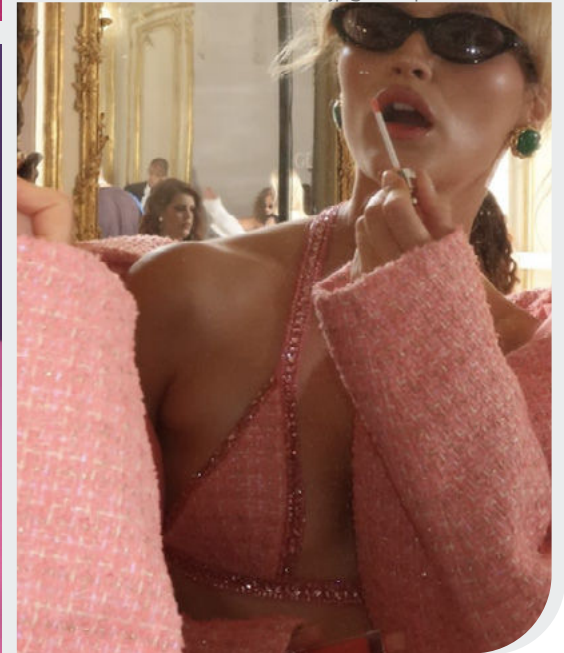
hellemardahl



Bordelle



@fiorucci



@chloecareux

INSOLENT FLIRT - PLAYFUL KINK - NAIVE MISCHIEF - YOUTHFUL CHIC

LINGERIE

MACROTRENDS

FORECAST

SPRING SUMMER 26

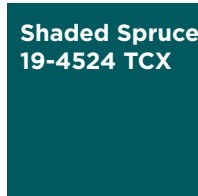
COLOR PALETTE **GUILTY PLEASURES**



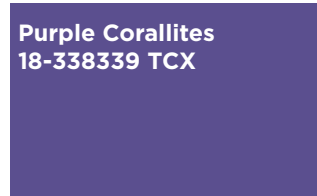
gentle_monster_l_2.png



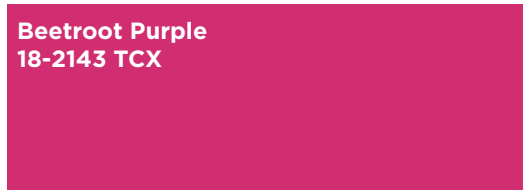
@lovestoriesintimates4.png



Shaded Spruce
19-4524 TCX



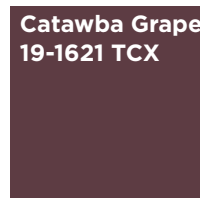
Purple Corallites
18-338339 TCX



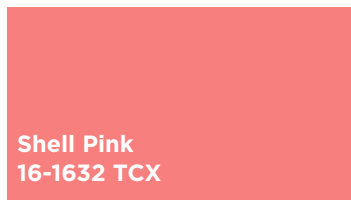
Beetroot Purple
18-2143 TCX



Charlock
12-0530 TCX



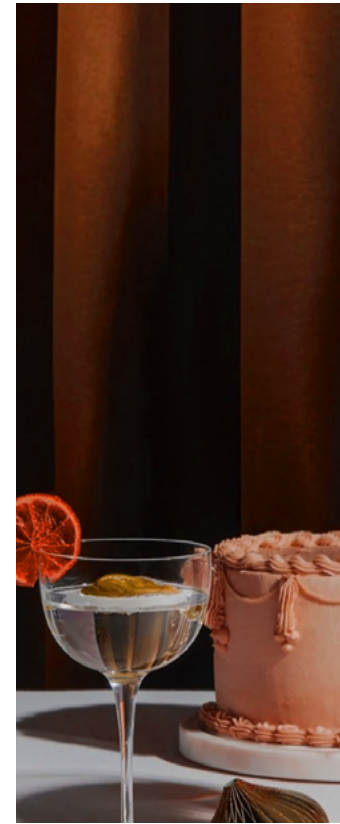
Catawba Grape
19-1621 TCX



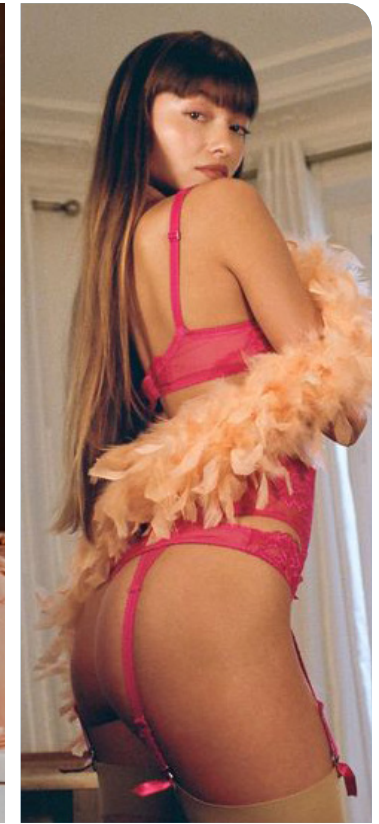
Shell Pink
16-1632 TCX



Poppy Red
17-1667 TCX



The Mixologist.png



Journelle.jpg

Brash and bold.

The Guilty pleasure lingerie color palette is a dynamic fusion of shades that captivate and seduce, with each color adding to the mood of playful indulgence. Zesty lime adds a vibrant jolt of energy, representing flirtatious curiosity and a hint of mischief. Passionate pink and red embody fiery confidence and allure, heightening the collection's sensuality. The deeper hues—seductive dark teal and violet—introduce a layer of mystery and sophistication, inviting intrigue and setting a moody, intimate tone. A rich brown-burgundy backdrop grounds these vivid shades, adding warmth and depth while evoking an indulgent, almost sinful allure. This palette creates a striking contrast, enhancing each color's intensity and producing a vivid, luxurious effect. Together, these shades are visually arresting, capturing the collection's essence: a balance between bold playfulness and irresistible seduction, designed to spark confidence and inspire unapologetic self-expression.

KEY MATERIAL **GUILTY PLEASURES**

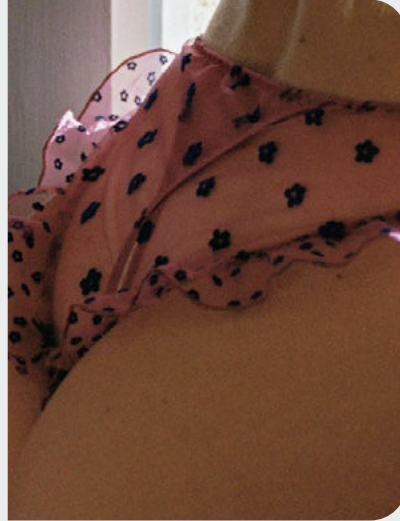


ysl paris 5

FUN FLOCKING



le petit trou

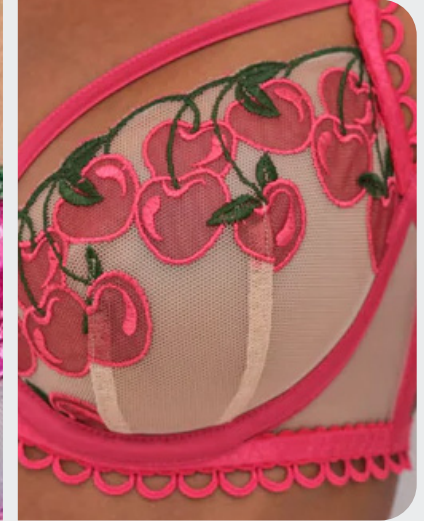


@lepetittrou.png

FRUITY MESH

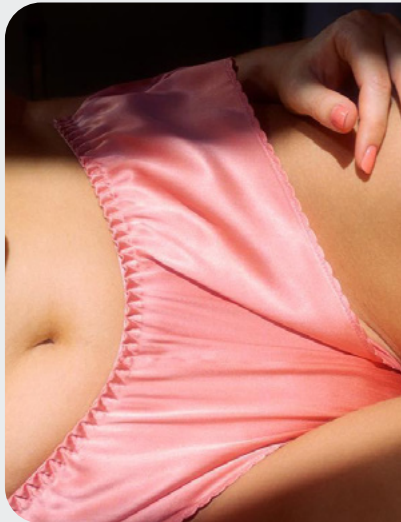


Fleur du mal



forloveandlemons4.jpg.webp

YUMMY SATINS



juliaetvincent



rocha-clp-s25-049.jpg

NEON LACE

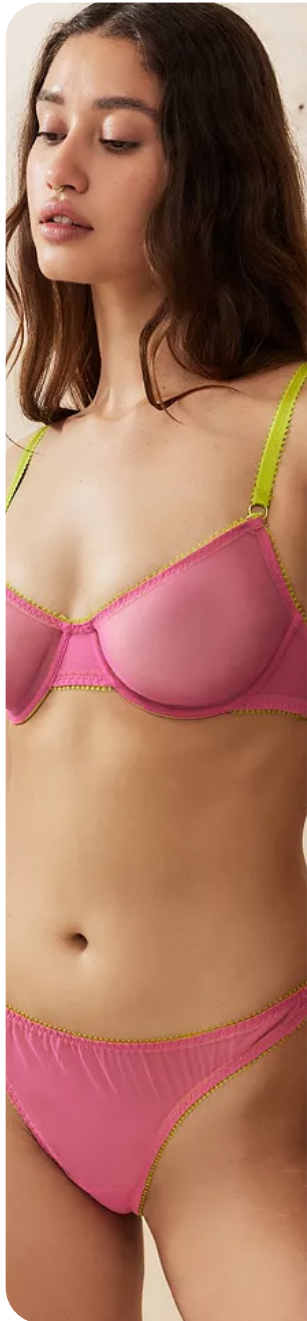


meshki



yse paris -3.jpg

KEY DETAILS **GUILTY PLEASURES**



forlovandlemons7

CONTRASTED ASSOCIATIONS



Fleur du mal



fleur du mal

HEART BEAT

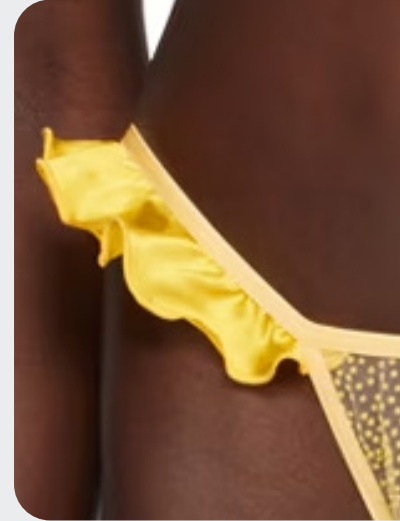


Fleur du mal

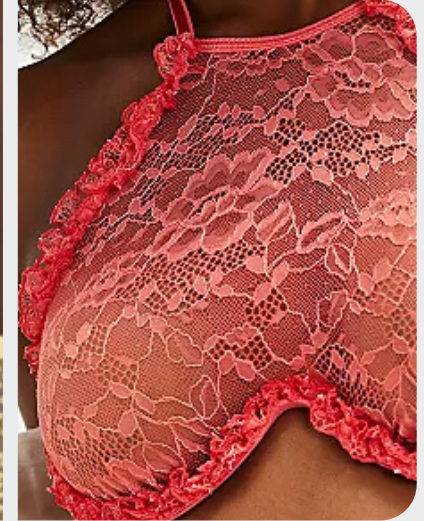


freepeople 34.webp

MICRO FRILLS



Le petit trou

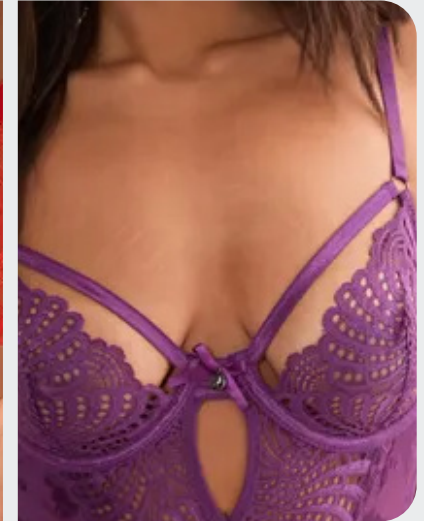


freepeople 31.webp

CANDY BONDAGE



urbanoutfitters10



nasty gal14.webp

TREND WHIMSICAL COQUETTE



@stephaniemphoto11



miss crofton 11



closet club

WHIMSICAL COQUETTE

The Whimsical Coquette lingerie trend is a lavish celebration of femininity, combining the vintage-inspired charm of royal core and coquette core to create a fantastical aesthetic that feels straight out of a modern fairy tale.

Each piece in this collection is infused with a baroque sense of romance, where traditional lingerie codes are revisited with imaginative touches. Expect to see an abundance of delicate embellishments like bows, intricate lace, and countless ribbons, layering each piece with a soft, romantic drama. Ruffles and frills amplify the daintiness, giving a nostalgic nod to past elegance and theatrical flair.

The color palette is dreamily vibrant, featuring pigmented pastels like feminine violet and rose, with the unexpected pop of juicy lime, breathing fresh energy into the typically muted lingerie hues. This trend is all about embracing a sensitive femininity that balances elegance and playfulness. It's lingerie aims to tell a story where every detail, from lace patterns to cascading ribbons, to evoke fantasy, charm, and an unabashedly whimsical spirit. The "Whimsical Coquette" look is a graceful yet extravagant ode to an ultra-feminine style that transports you to a dreamy, fairytale world.

MOOD WHIMSICAL COQUETTE



chloè 3



Design Parade Toulon



@stefaniemphoto12.png



@stefaniemphoto9.png



@myiasylvia.jpg



forloveandlemons 8



For Love and Lemon



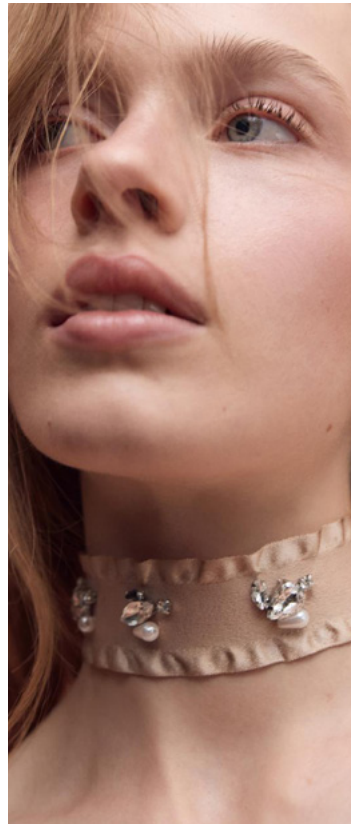
@silasehrazatyucel

FABLED BEAUTY - ENCHANTING CHARMER- SURREAL FROUFROU - IMAGINARY PAST

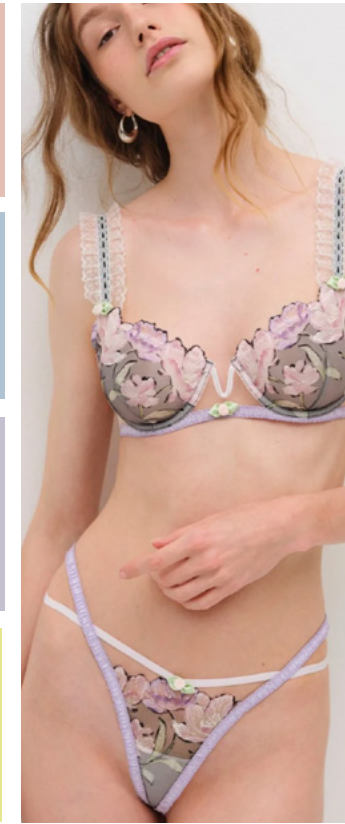
COLOR PALETTE WHIMSICAL COQUETTE



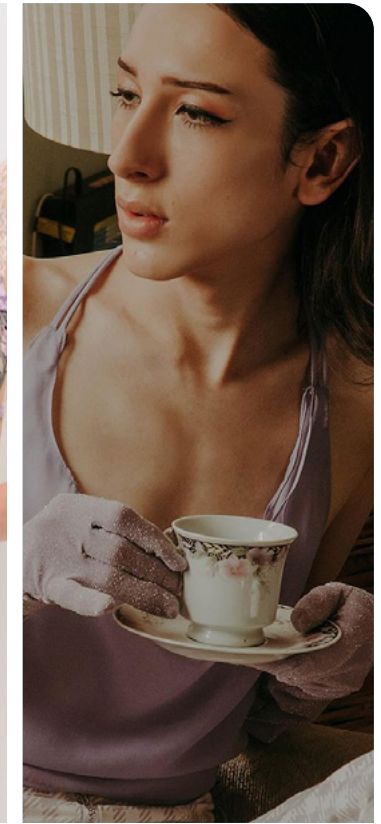
Cafe-Petiole.jpg



zara 23.jpg



For Love & Lemons (3).webp



@alejandromerophoto.jpg

Candy pastels.

The Whimsical Coquette lingerie palette enchants with fresh, pigmented pastels that breathe life into each piece. A blend of peach, soft minty hues, a delicate rose, and wistful violets creates a romantic, dreamy effect, making each color feel rejuvenating and almost utopian. These tones are balanced by a “resorting” blue and lavender, adding a hint of tranquility to the vibrancy of pastels. This palette evokes a sense of nostalgia while remaining delightfully contemporary, enhancing the coquette-inspired designs with a refined, playful quality. Each hue brings a lively, delicate charm that perfectly complements the whimsical, baroque-inspired elements like lace and ruffles. Together, these colors lend a refreshing, modern spin to classic lingerie tones, amplifying femininity and adding a touch of fantasy. The result is a palette that feels both dreamy and sophisticated, drawing wearers into a fairy-tale world where softness and color express a playful, romantic femininity.

KEY MATERIAL **WHIMSICAL COQUETTE**



pinterest

MICRO EMBROIDERED SHEERS



urbanoutfitters16.webp



@stefaniemphoto6.png

VINTAGE BOUQUETS



freepeople 42



forloveandlemons17.jpg.webp

HERITAGE LACE



Julia et Vincent

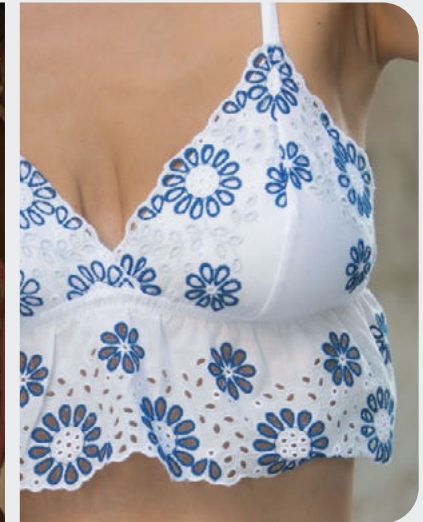


forloveandlemons20.jpg.webp

EYELET OPENWORKS



forloveandlemons12



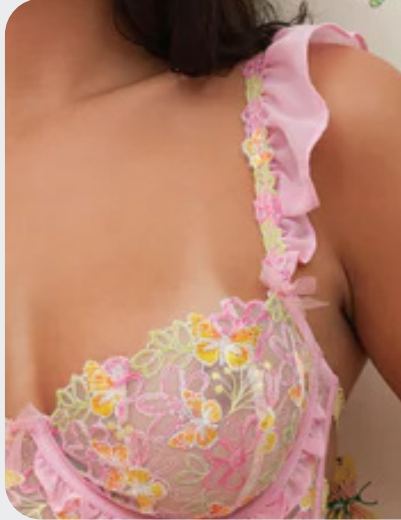
@intimissimi15.png

KEY DETAILS WHIMSICAL COQUETTE



@stephaniemphoto20

FANCY STRAPS



forloveandlemons8.jpg_1.webp



pinterest

LACE FRILLS



chloe 55



forloveandlemons

GATHERED CUPS



urbanoutfitters 33



urban outfitters 4

MINI BOWS



urban outfitter 19

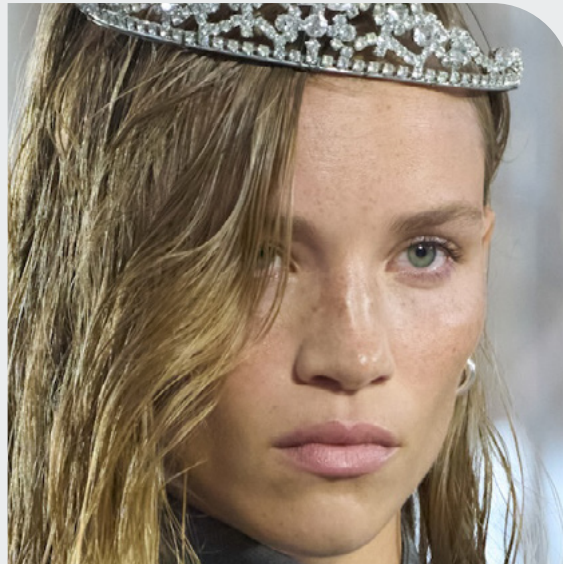


lovelemon.jpg.webp

TREND **ALTERNATIVE SEDUCTION**



@angelineillmast14



attico 25



Chantelle 2

ALTERNATIVE SEDUCTION

The Alternative Seduction lingerie trend brings a bold, defiant twist to sensual wear, embracing both strength and allure in a provocative reinvention of femininity. This collection throws tradition aside with daring designs that reflect a spirit of rebellion and empowerment, resonating with a “girly punk” vibe that’s equal parts dramatic and romantic.

Key elements in this line include rich textures and striking contrasts: deep, shadowy blacks blend with sheer, sensual fabrics to create a dramatic visual impact.

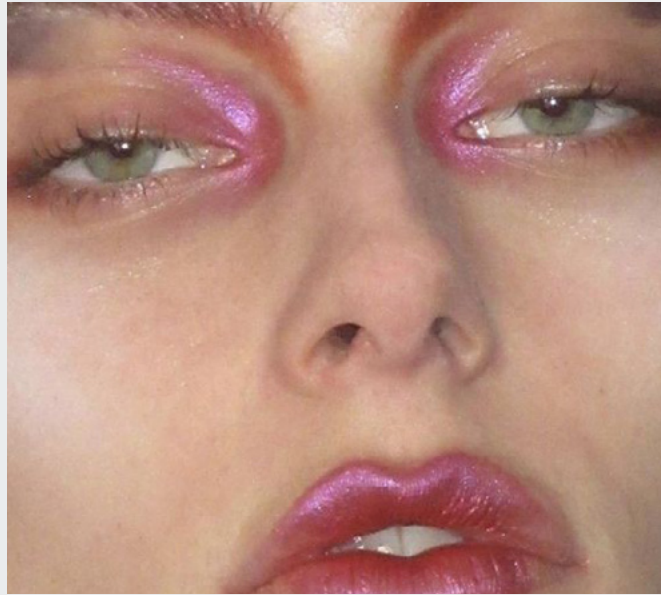
The palette evokes the mystery of night, featuring opulent tones of violet, fuchsia, and burgundy that radiate confidence and intrigue. With metallic accents and rich, jewel-toned embroidery, the pieces capture the aesthetic of a “grungy dreamer,” creating an image that’s seductive yet rough around the edges.

Ideal for a sultry summer evening, Alternative Seduction celebrates the woman who embraces her own vision of allure—complex, powerful, and unapologetically herself. This is lingerie that feels more like an armor of beauty, allowing her to redefine romance and seduction on her own terms, capturing both the rebellious spirit and the beauty of the night.

MOOD **ALTERNATIVE SEDUCTION**



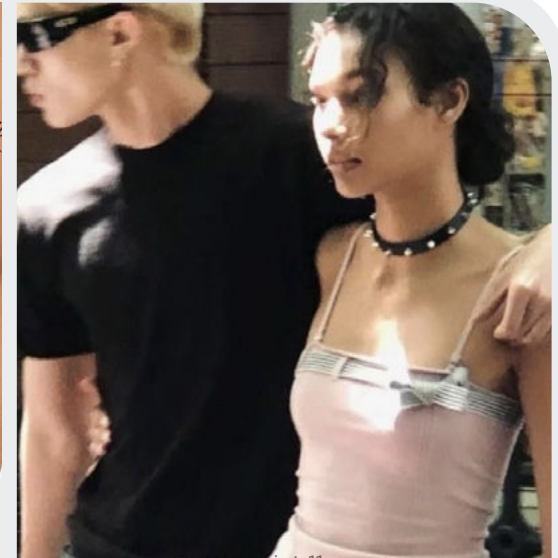
urbanoutfitters32



pinterest



TTSWTRPS



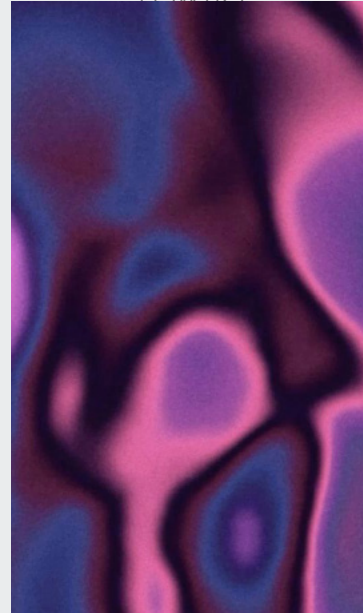
@attiresaint 11.png



JAKIORAMOUR.jpeg



ann demeulemeester



Jenny-Hytönen



@stephaniemphoto

DISRUPTIVE SEXYNESS - SUBVERSIVE SEDUCTION - REBELLIOUS FEMININITY

COLOR PALETTE **ALTERNATIVE SEDUCTION**



urbanoutfitters64.webp



@florentinaleitner 19.png

Pomegranate
19-1930 TCX

Catawba Grape
19-1621 TCX

Purple Corallites
18-33839 TCX

Vivacious
19-2045 TCX

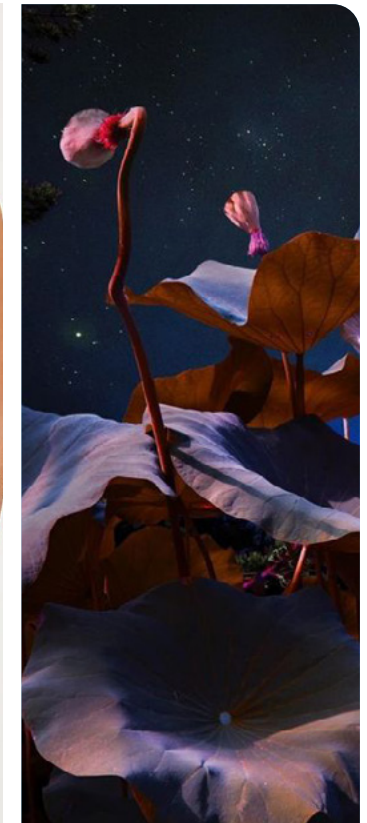
Boulder
14-1110 TCX

Peachy Keen
19-2045 TCX

Patriot Blue
19-3925 TCX



freepeople 77.webp



Linda Westin.jpg

Twilight charisma.

The Alternative Seduction lingerie color palette captivates with its rich, dark tones that evoke a mysterious allure. Deep, nocturnal hues like midnight violet and navy dominate, creating a dramatic, moody base that feels both sensual and empowering. Burgundy and dark fuchsia add warmth and intensity, bringing a rebellious edge to the collection. These colors, combined with a subtle skin beige, enhance natural skin tones, highlighting and contrasting the depth of the darker shades for a provocative appeal. Light rose interjects as a light, unexpected touch, balancing the palette and lending a hint of softness to the intensity. Together, this palette embodies a romantic yet defiant spirit—an invitation to explore the bolder side of femininity. It speaks to a modern, confident woman who embraces her allure with sophistication, crafting a unique blend of elegance and daring that feels as empowering as it is seductive.

KEY MATERIAL **ALTERNATIVE SEDUCTION**



Van Noten 178

LEATHER LOOKS

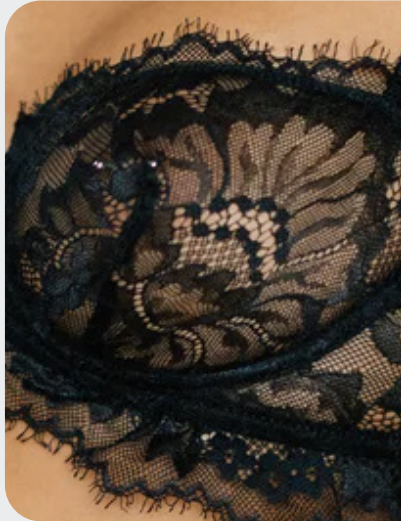


vaillant-clp-s25-017.jpg



urbanoutfitters25.webp

DARK GUIPURE

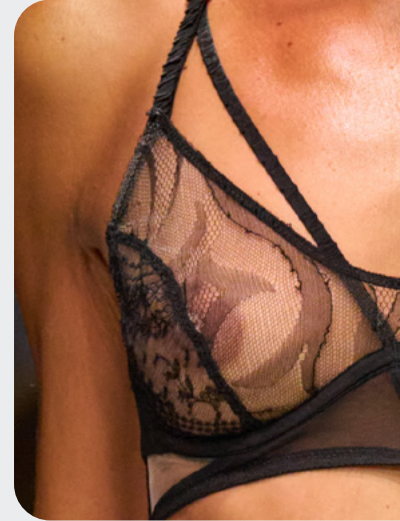


ysl paris



nasty gal16_1.webp

TATTOO-EFFECT MESH

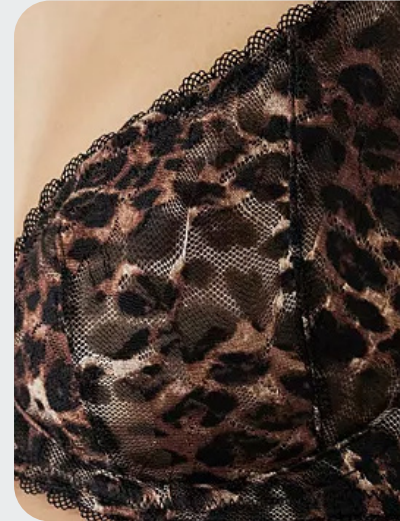


Ester Manas



TTSWTRS.jpg

LAYERED PRINTS



urbanoutfitters 55



zara 57.webp

KEY DETAILS **ALTERNATIVE SEDUCTION**



Milan StreetStyle 1

REBELLIOUS COQUETTE POUFF



aniye record



forloveandlemons28.jpg.webp

STRAPS GAME

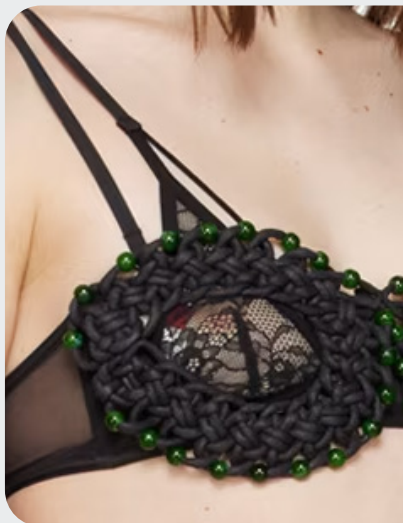


Natsuka



freepeople 87.webp

MESSY SUPERPOSITION

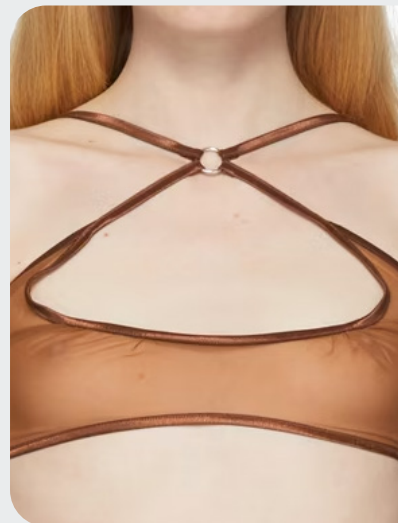


Shawna Wu

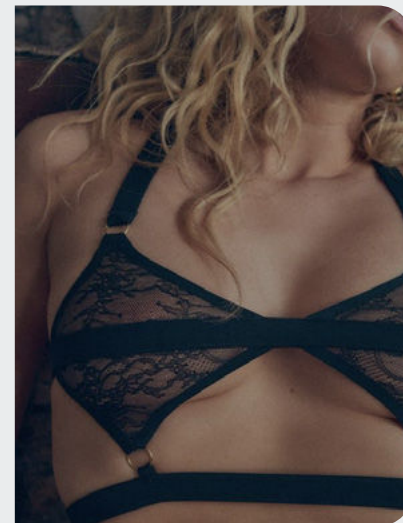


freepeople 61.webp

UNCONVENTIONAL OPENINGS



KNWLS-



Livy.png



LINGERIE

KEY ITEMS

BRAS

The SS26 bra trends embrace a playful evolution of classic styles, balancing comfort with striking design elements. Unstructured bras continue to dominate, with lace bandeaus, V-neck styles, and scooping basics offering a relaxed yet feminine aesthetic. These designs emphasize natural shape and effortless wearability, perfect for layering or minimalist looks.

Underwired bras take a more daring and fun turn, with ruffles adding a whimsical touch to structured designs. Separated balconette cups and lace-up fronts inject a hint of flirtation, creating visually dynamic pieces that flirt with sensuality. Layered cups provide depth and texture, while dainty straps are strategically placed to form a cut-out effect, adding intrigue and playfulness. These details give traditional underwired bras a modern twist, offering both structure and creative flair. Together, these trends redefine everyday lingerie, blending comfort with bold, fashionable statement pieces.

BIG TREND

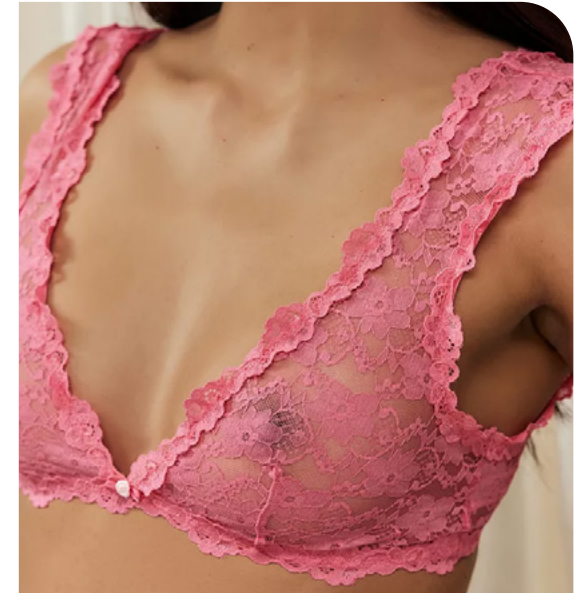
SS26 **DEEP V BRA**



freepeople 100.webp



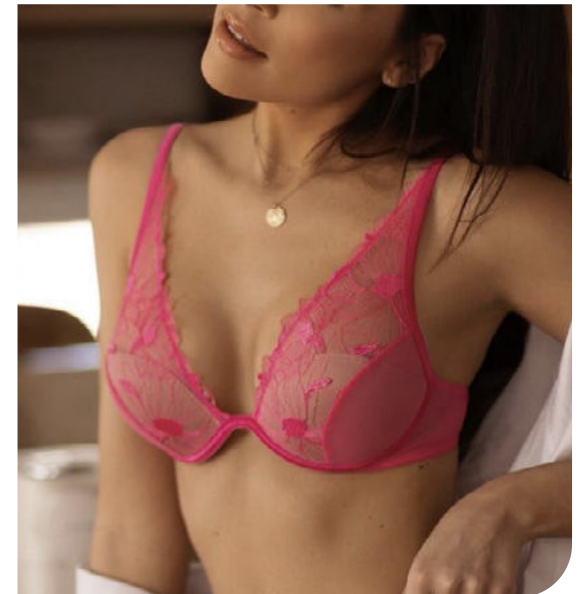
@intimissimi19.png



urbanoutfitters24.webp



yse paris -2.jpg



@intimissimi2.png

STABLE TREND

SS26 SCOOPED BASIC



urbanoutfitters16.webp



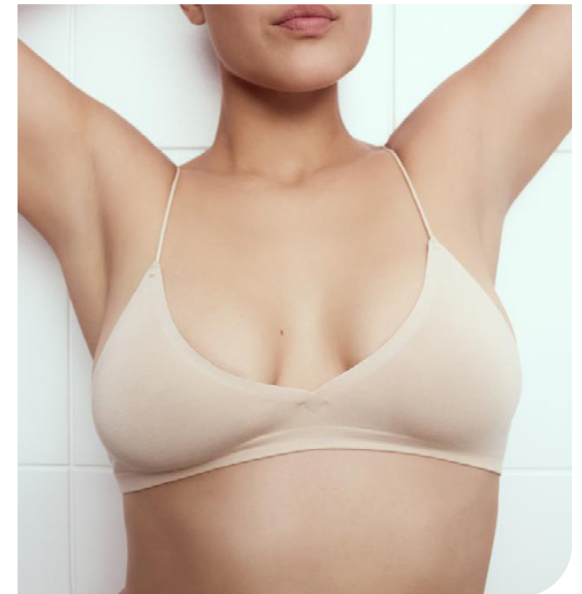
jacquemus



nastygalli1.webp



urbanoutfitters62.webp



zara 29.jpg

SAFE TREND

SS26 **LACE BANDEAU**



zara 39.jpg



chloe-clp-s25-055.jpg



fleur-du-mal-purple-lace-bandeau-bra.avif



miss crofton (5).webp



For Love & Lemons (1).webp

STABLE TREND

SS26 UNLINED LACE BRA



Bildschirmfoto 2024-11-13 um 13.58.27.png



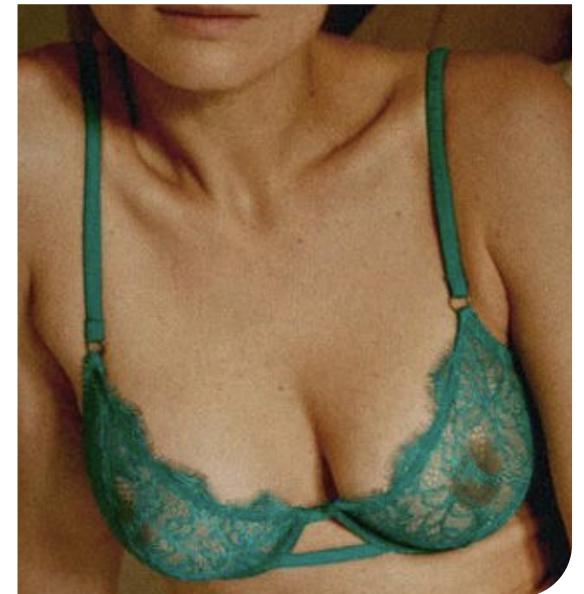
forloveandlemons23.jpg.webp



bohoo14.webp



zara 2.jpg



@lovestoriesintimates6.png

SAFE TREND

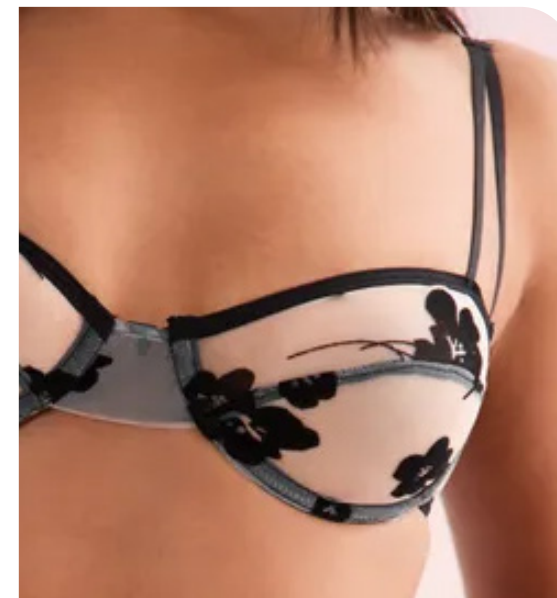
SS26 EMBROIDERED MESH BRA



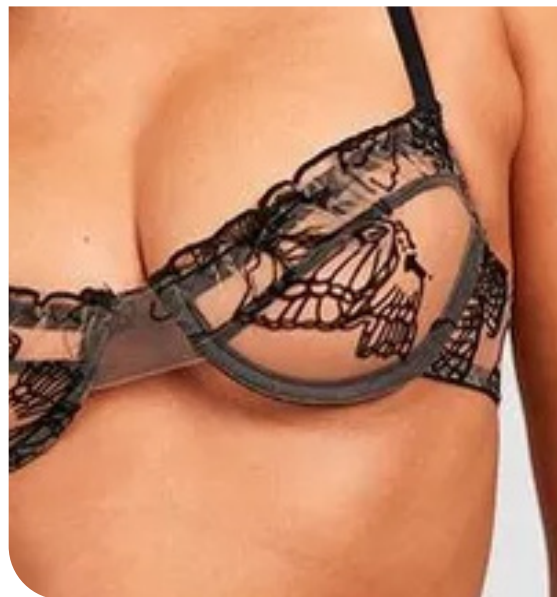
yse paris -13.jpg.webp



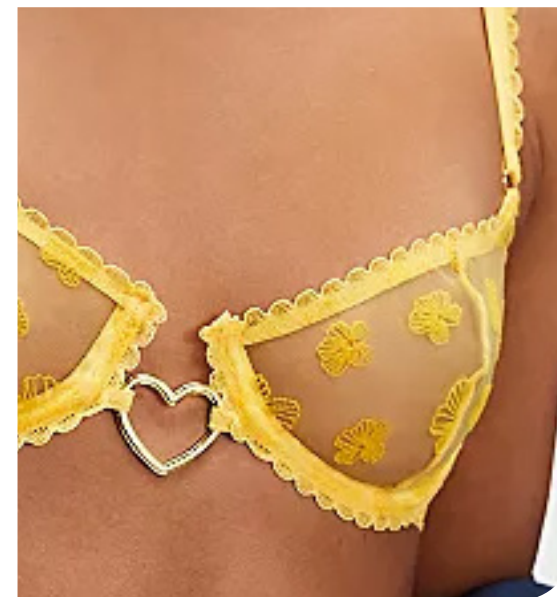
forloveandlemons1.jpg.webp



nasty gal13.webp



bohoo13.webp



freepeople 46_1.webp

SAFE TREND

SS26 FRILLED UNDERWIRE BRA



yse paris -16.jpg



urbanoutfitters12.webp



forloveandlemons8.jpg.webp



bohoo4.webp



forloveandlemons_1

SAFE TREND

SS26 **DIAGONAL STRAP CUP**



forloveandlemons10.jpg.webp



freepeople 36.webp



agent-provocateur-109.jpeg



forloveandlemons21.jpg.webp



bohoo2.webp



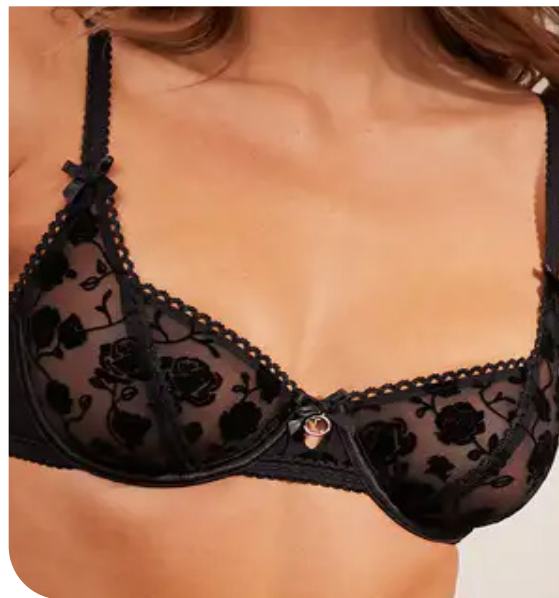
@stefaniemphoto14.png



freepeople 1.webp



urbanoutfitters52.webp



lounge 11.jpg.webp



forloveandlemons48.jpg.webp

EARLY SIGN

SS26 TIE-UP FRONT



freepeople 32.webp



@intimissimi14.png



nasty gal16.webp



yse paris -10.jpg.webp



bohoo6.webp

EARLY SIGN

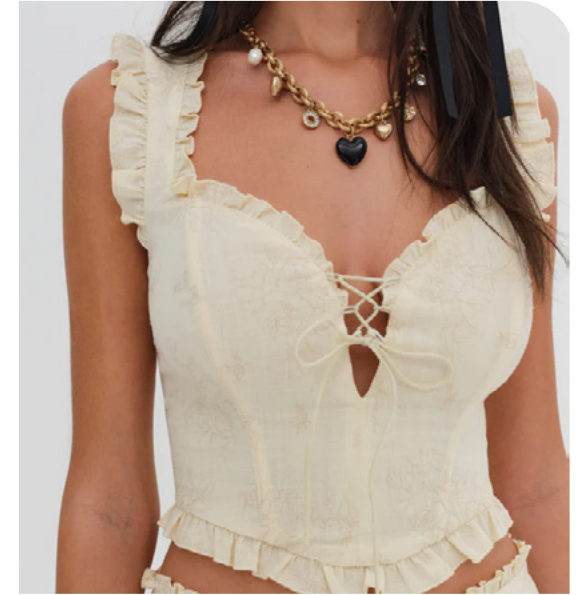
SS26 HOMETOWN CORSET



rojas-clp-s25-010.jpg



urbanoutfitters18.webp



forloveandlemons_2



freepeople 72.webp



forloveandlemons29.jpg.webp

EDGY TREND

SS26 50'S COTTON BRA



_oby0762-11436196.jpg



fio00753-11460137.jpg



forloveandlemons_3



valli-clp-s25-039.jpg



shushu-tong-white-bow-tie-bra.avif



LINGERIE

KEY ITEMS

PANTIES

The SS26 panty trends embrace a dreamy femininity with a focus on playful, yet elegant designs. Lettuce hems, a classic flirty detail, evolve this season into tutu-like flouncy layers, adding a whimsical, airy feel to the pieces. The butterfly panty trend takes a more refined approach, toning down the frills for a softer, subtler appeal, while still capturing a delicate, feminine aesthetic. Double side straps elevate the traditional panty design, offering a more classy, structured look that adds sophistication while maintaining a sensual edge.

Duo-front cutouts introduce a fresh, chic element, integrating sexy, sculptural details that feel both modern and daring. This season's trends strike a perfect balance between youthful flirtation and elegant sensuality, bringing together playful details and sophisticated accents for an elevated, feminine allure that's both chic and seductive. It's a celebration of femininity with a refined, sensual twist.

BIG TREND

SS26 FRILLED PANTY



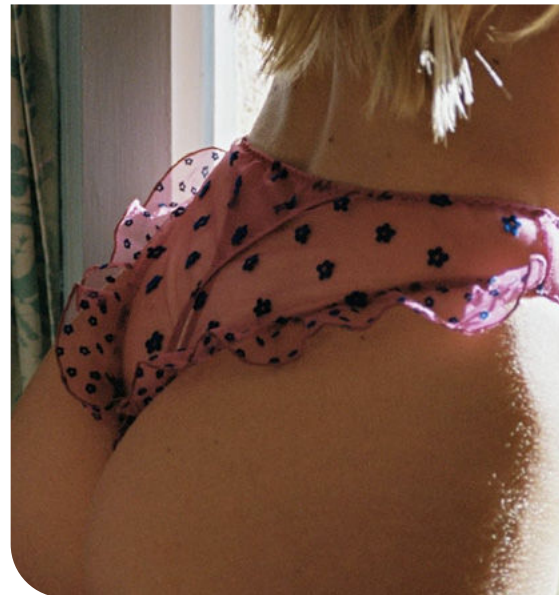
Duciel (1).jpg



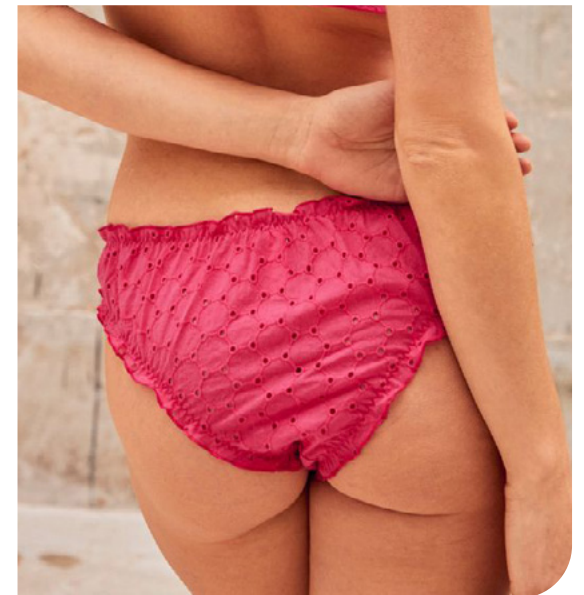
urbanoutfitters12.webp



miss crofton (3).webp



pinterest



Chichi Castelnango.jpg

STABLE TREND

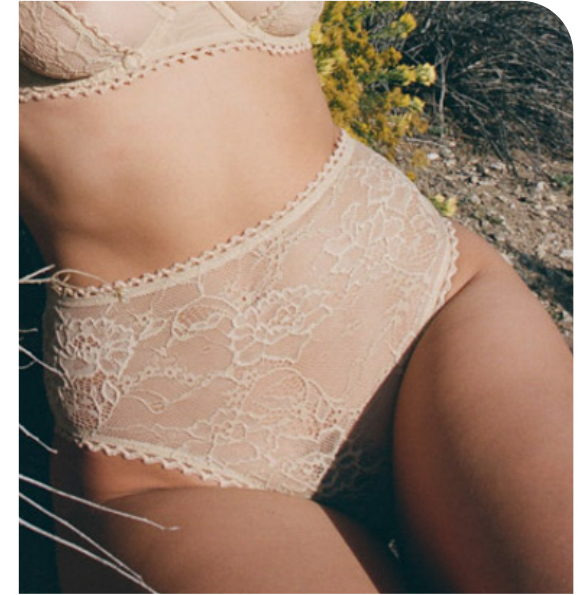
SS26 ALL-LACE HIGH-WAIST



userimage51832351-small.jpg



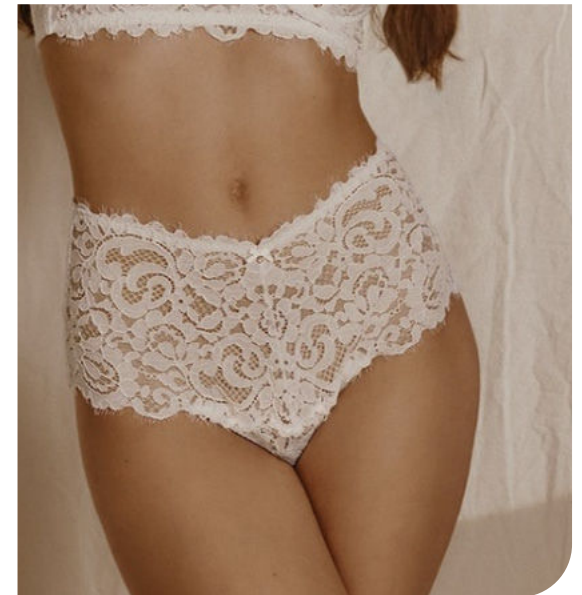
underprotection_ss2400012.png



lonelylabel (1).jpg



freepeople 46.webp



@intimissimi16.png

STABLE TREND

SS26 DOUBLE STRAP PANTY



nasty gal16.webp



forloveandlemons_5



@stefaniemphoto18.png



urbanoutfitters42.webp



freepeople 15.webp



forloveandlemons_5.jpg.webp



bohoo7.webp



nasty gall.jpeg.webp



urbanoutfitters6.webp



forloveandlemons_6.jpg.webp



Vivetta21.jpg



jw-anderson-clp-f24-016.jpg



zara 42.jpg



Vivetta10.jpg



urbanoutfitters28_1.webp

SAFE TREND

SS26 BUTTERFLY PANTY



annadaki.jpg



fio00753-11460137_1.jpg



fleur-du-mal-black-flutter-bra.avif



yse paris -6.jpg.webp



urbanoutfitters7.webp

EARLY SIGN

SS26 MICRO TUTU



urban-outfitters-45.jpg



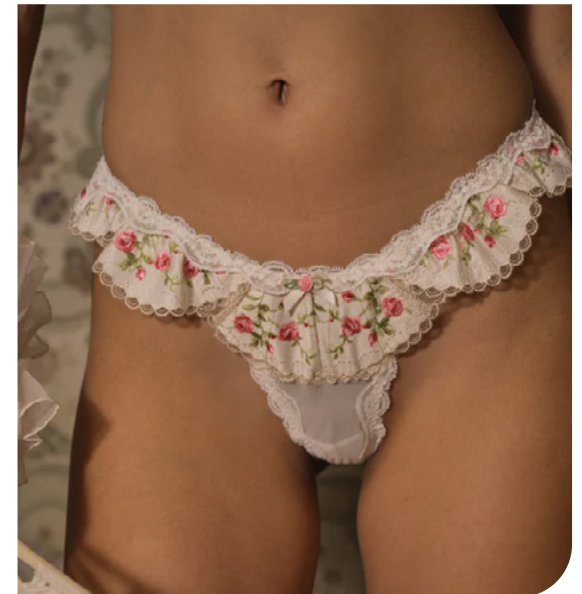
@lovestoriesintimates1.png



forloveandlemons_7.jpg.webp



freepeople 34.webp



20240404_VS_Fall_RTW_D1_Look11_1495_V2_720x.jpg.webp

EARLY SIGN

SS26 MESH CYCLING CAPRIS



knwls 1.jpg



yuhan wang2.jpg



vaquera-clp-s25-043.jpg



zara 20.jpg



freepeople 39.webp

EDGY TREND

SS26 BLOOMER SHORTS



urbanoutfitters4.webp



@keziacook 33.png



reformation.webp



chloe-s25-135.jpg



forloveandlemons 9.jpg.webp

EDGY TREND

SS26 PETTICOAT STYLES



zara 30.jpg



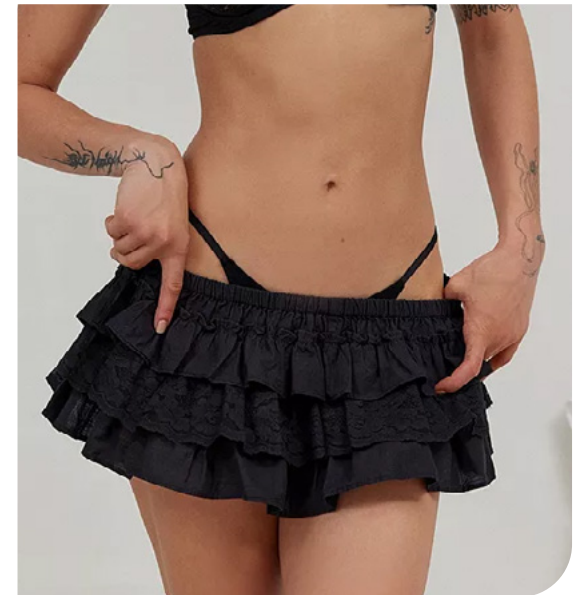
jaded.webp



Yuhan Wang 7.jpg



urbanoutfitters32_1.webp



urbanoutfitters29.webp



LINGERIE KEY PIECES LOUNGEWEAR & SLEEPWEAR

The SS26 lounge and sleep trends blend comfort with elevated femininity, embracing a mix of romance and playful elegance. Simple deep V bodies offer a sleek, understated sensuality, while dreamy ruffle bodies introduce a soft, romantic flair, capturing an ethereal, almost vintage vibe. The collection also highlights pouffy bloomers and balloonist tops, combining playful volume with effortless comfort, perfect for lounging or relaxed nights.

Country romance is woven into the season with cotton bustier tops and nightgowns, offering a delicate, rustic charm reminiscent of countryside escapes. These pieces exude a sense of freedom, freshness, and light-heartedness while maintaining a sophisticated allure. The SS26 sleepwear collection is all about merging romantic femininity with modern relaxation, creating a perfect balance of delicate details and bold, relaxed shapes.

BIG TREND

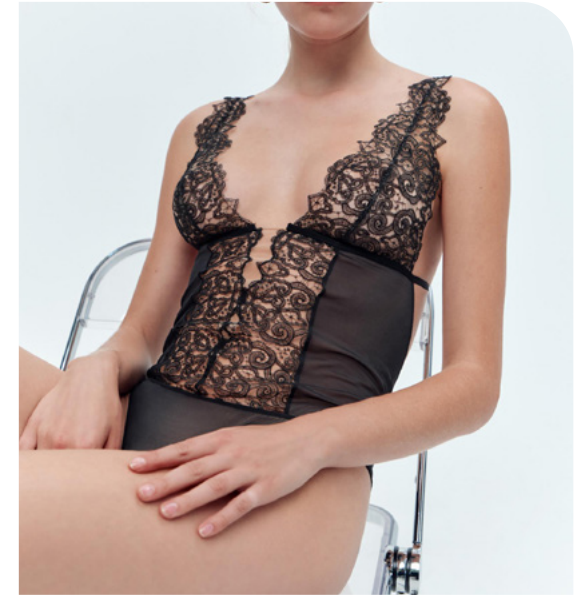
SS26 DEEP V LACE BODY



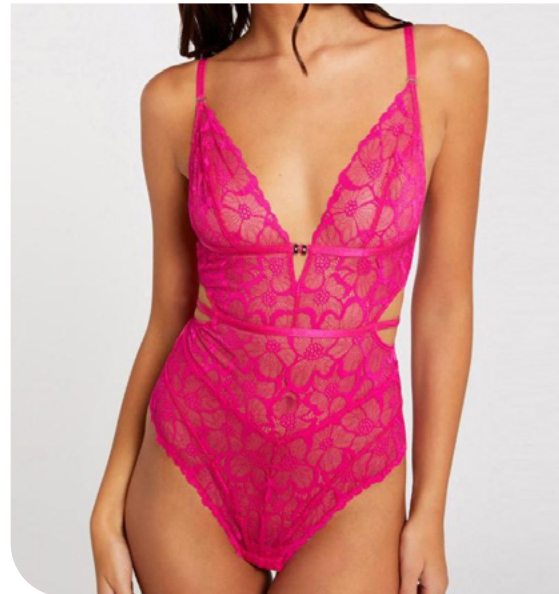
yse paris -15.jpg



savagexfenty87.webp



zara 48.jpg



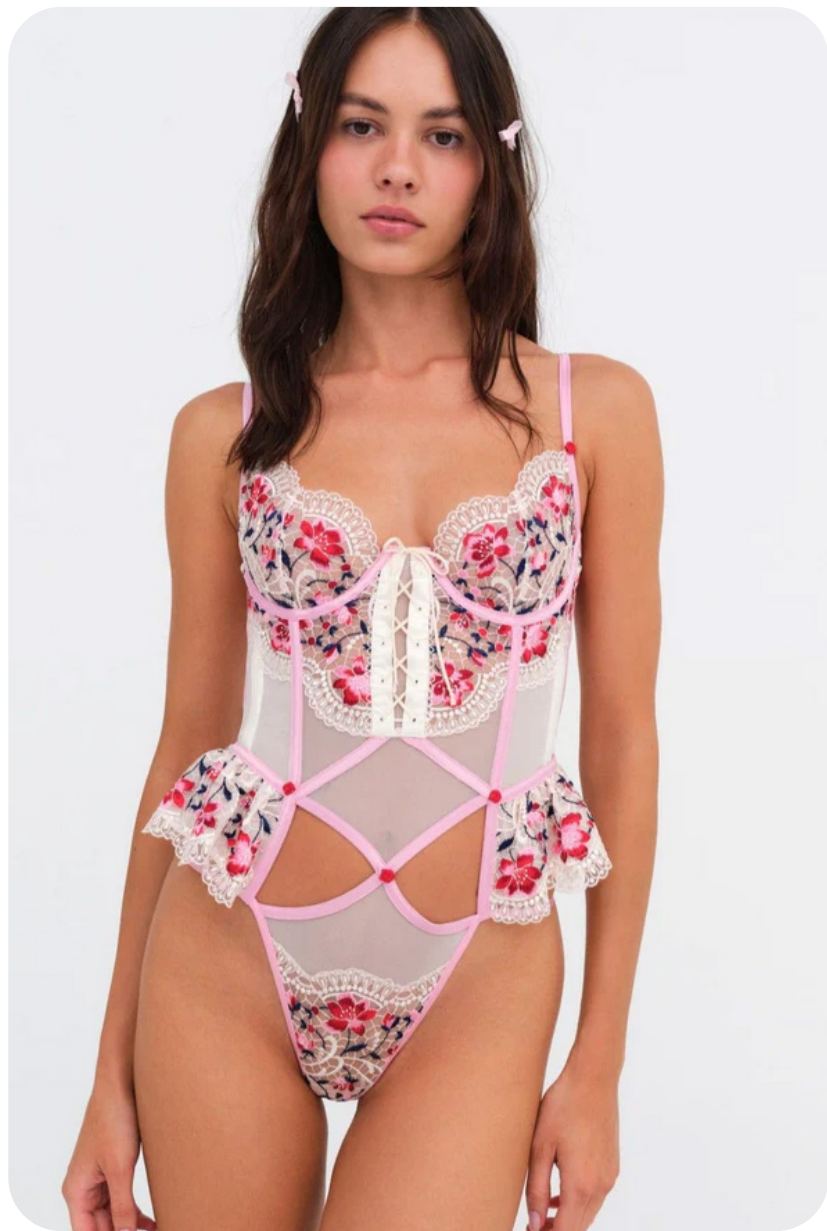
3suisses.jpeg



@intimissimi3.png

STABLE TREND

SS26 ROMANTIC RUFFLE BODY



forloveandlemons_10.jpg.webp



@intimissimi17.png



@stefaniemphoto15.png



bohoo10.webp



nasty_gal20.webp

SAFE TREND

SS26 **POINTELLE ONEZIE**



zara 41.jpg



Vivetta 28.jpg



mills.webp



forloveandlemons_9.jpg.webp



skims.avif

BIG TREND

SS26 **TRIANGLE FLOUNCY CAMI**



urbanoutfitters68.webp



nasty gal15.webp



freepeople 41.webp



@intimissimi15.png



forloveandlemons33.jpg.webp

STABLE TREND

SS26 DAINTY POINTELLE CAMI



zara 4.jpg



vivetta 4.jpg



freepeople 99.webp



lcone.jpg



florence.webp

SAFE TREND

SS26 TIE-UP CAMISOLE



forloveandlemons_11.jpg.webp



forloveandlemons_12.jpg.webp



zara 32.jpg



zara 14.jpg



@keziacook_9.png

EDGY TREND

SS26 ROMANTIC VOLUME CROP TOP



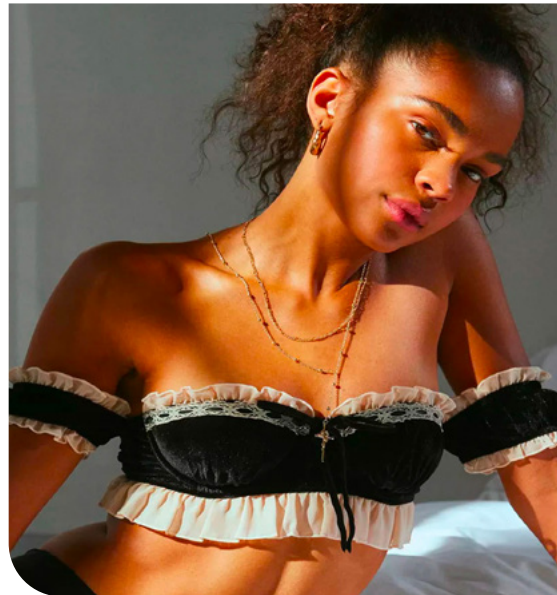
anna-sui-po-s25-021-11424915.jpg



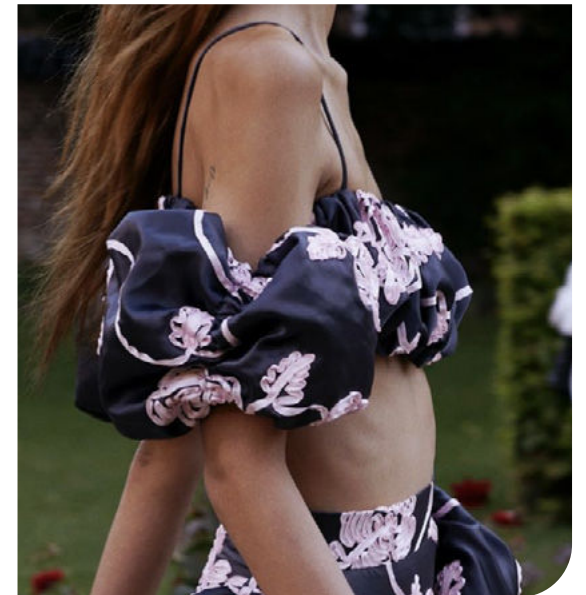
@2moodstore9.png



forloveandlemons_4



urban-outfitters-07.jpg



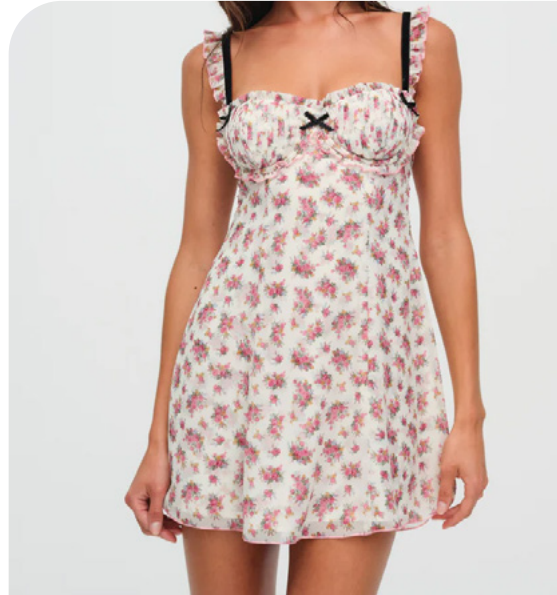
rotate2.png

BIG TREND

SS26 **BUSTIER NIGHTIE**



Chloé 26.jpg



forloveandlemons_13.jpg.webp



Cecile Bahnsen5.jpg



@helsastudio_13.png



forloveandlemons_14.jpg.webp

SAFE TREND

SS26 **BOHO SHIFT NIGHTY**



freepeople 65.webp



03_23108_FLL_WHITE RUNNER_PORTUGAL_015_v1_720xjpgwebp



zara 1.webp



chloe 24.jpg



Twinsset2.jpg

EARLY SIGN

SS26 DISHEVELING SLIP DRESS



zara 25.jpg



demeulemeester 54.jpg



erdem30.jpg



SARAWONG_auto_sar_mln_ss25_030.jpg



alberta ferretti 12.jpg

EDGY TREND

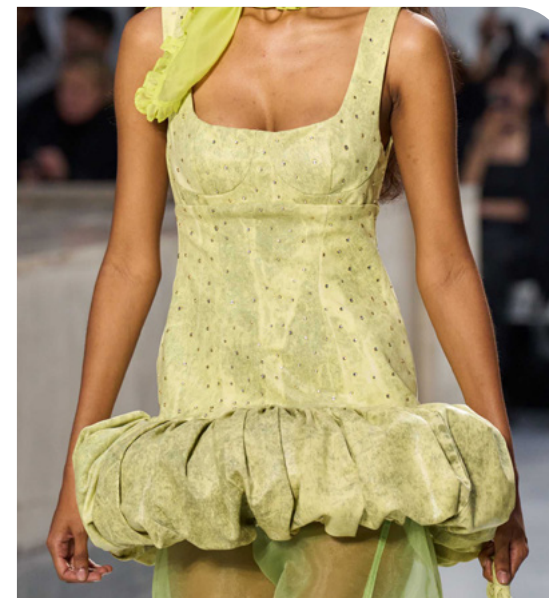
SS26 **BUBBLE VOLUME**



Chloé141.jpg



Cecilie Bahnsen 3.jpg



ganni9.jpg



No_21_nto_min_ss25_033.jpg



forloveandlemons_15.jpg.webp



DATA TO DRIVE

01 CREATIVITY

02 STRATEGY

03 SUSTAINABILITY



LIVETREND

THANK YOU!

You may not copy, reproduce, distribute, publish, display, perform, modify, create derivative works, transmit, or in any way exploit any such content, nor may you distribute any part of this content over any network, sell or offer it for sale, or use such content to construct any kind of database. You may not alter or remove any copyright or other notice from copies of the content on any Livetrend report.

If you have further needs, please contact us via chat or at barbara@livetrend.co