



FORECAST
SPRING/SUMMER
2026

KNITWEAR
YARNS,
STITCHES &
FINISHINGS



LIVETREND

SS26 KNITWEAR INTRODUCTION



kenzo



zara56.jpg



Zegna 16.jpg



phillings



FORECAST

Poetic meets Sleek. The 2026 knitwear trends embrace a poetic yet elevated sensibility, highlighting delicate textures, artisanal effects, and sculptural elements. Sheer effects stay in style, created with thin yarns and high gauges for a barely-there, ethereal look that captures an airy, almost translucent quality. Openwork designs dominate, ranging from refined compact crochet and eyelet mesh to more romantic styles in pointelle, vintage filet stitch, and drop needle ribs. Fancy yarns, such as summery bouclé, raffia, ribbon yarns, and soft felted yarns, bring a natural, hand-crafted appeal that feels fresh and earthy. Technical compact knits offer a contrast with their structured, stiff feel, perfect for sharply tailored, sculptural silhouettes. Meanwhile, sporty jacquards and flat microstitches add retro-chic appeal, while illusion jacquards and twisted hems infuse playful sophistication. Hems are particularly emphasized this season, with creative details like scalloped crochet edges, wavy forms, and even structured designs enhanced by wires. For added visual interest, coatings and embellishments lend subtle shimmer, giving knits an elegant, glimmering finish. Altogether, this season's knitwear harmonizes classic artisan styles with technical innovations, producing versatile pieces that are both nostalgic and forward-looking.

This forecasting report is based on innovative LIVETREND Data and the expertise of Trend Analysts. The trends in this report are organized by their magnitude and impact. Find the relating icons & stamps on the last slides.

**ACCESS ALL IMAGES
CLICKING HERE**



roberto cavalli88.jpg



zara2.jpg



System 10.jpg

SS26 KNITWEAR **KEY YARNS**

YARNS MUTED MOULINÉ



holzweiler



System 9.jpg



Wales Bonner 29.jpg



zara68.jpg



zara22.jpg

BIG TREND

MOULINÉ YARNS IN MUTED COLOR COMBINATIONS - NATURAL LOOK - POETIC RUSTICITY

YARNS SUMMERY TWEED YARNS



@mironovanastasiia_1.png



Sacai20.jpg



zara/2.jpg



gabriela-hearst-047.jpg



holzweiler

SAFE TREND

BOUTONNÉ AND VRILLÉ YARNS IN LIGHT COLORS - COTTON BLENDS - ADDING SUBTLE TEXTURE

YARNS LOOP FRINGE



gabriela hearst



@diotima1.png



@diotima6.png



CopenhagenStreetstyle10.jpg



zara26.jpg

EDGY TREND

LOOP FRINGE KNITS FOR A DYNAMIC TEXTURED LOOK - LONGER FUZZ LOOK

YARNS CRAFTY RIBBONS



cult gaia



anteprima (2).jpg



1aakk 3.png



ganni-068.jpg



bottega-veneta-035.jpg

SAFE TREND

RIBBON YARNS - THICK GAUGE KNITS - HANDMADE LOOK - SOFT COLORS - IRREGULAR LOOK

YARNS RAFFIA SUPREME



Dolce & Gabbana43.jpg



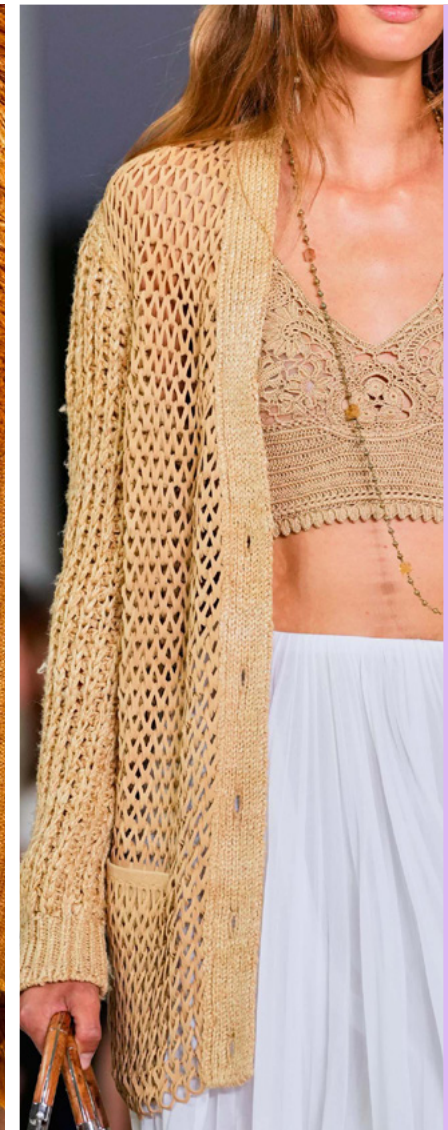
elie saab2.jpg



Dolce & Gabbana42.jpg



biagiotti-015.jpg



ralph-lauren-093.jpg

EARLY SIGN

RAFFIA YARNS FOR CROCHET KNITS AND OPENWORK KNITS - HEAVY NATURAL LOOK

YARNS COMPACT FELTED KNITS



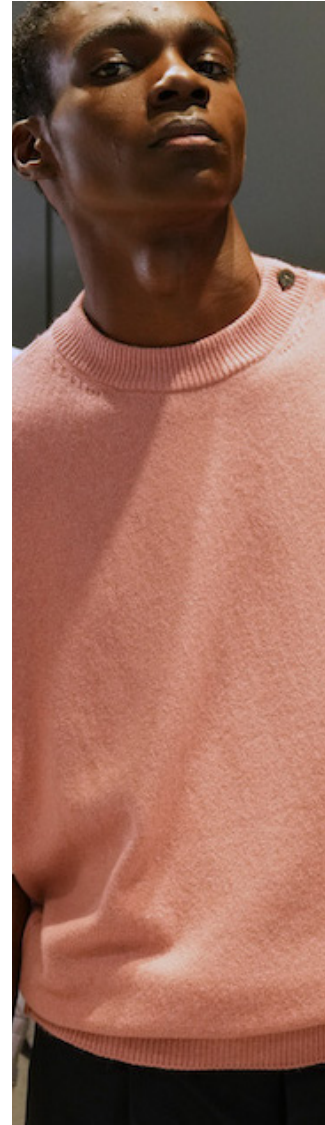
Acne-Studios_runway_ss25_look-9_d.webp



acne-clp-s25-056.jpg



sezane2.avif



Neil Barrett 8.jpg



tibi-041.jpg

EARLY SIGN

TEXTURED YARNS - RECYCLED YARNS - SUBTLE TO FULLY FELTED FINISH

YARNS SUMMER FUZZ



gucci



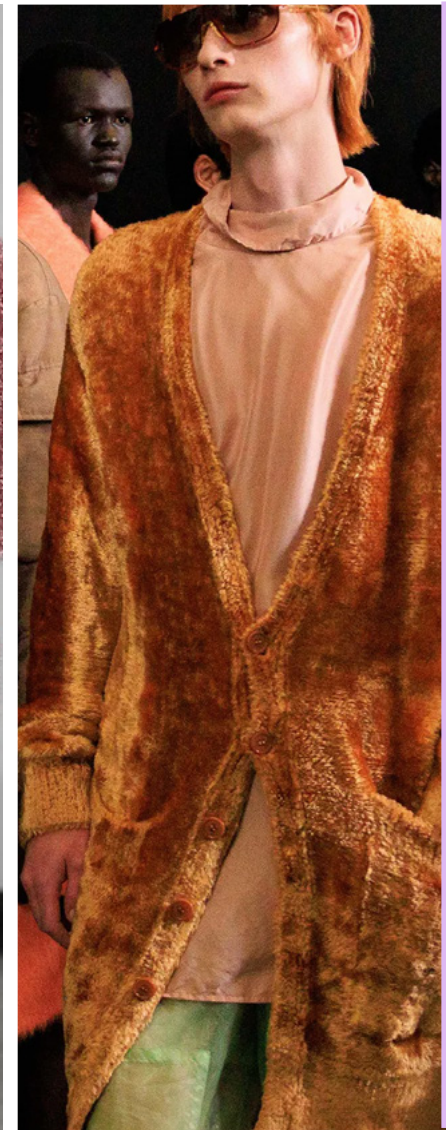
zara78.jpg



System 10.jpg



Simone Rocha 13.jpg



dries

EARLY SIGN

CHENILLE & FANCY YARNS - EXTRA SOFT TEXTURE



YARNS MODERN CHAINMAIL



Enfants Riches Deprimes2.jpg



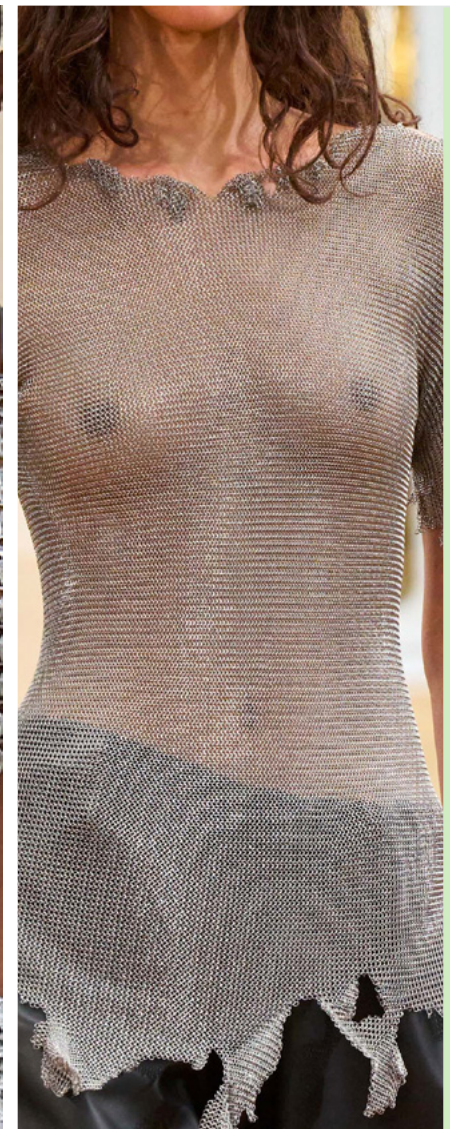
Loewe 40.jpg



esber 1.png



Valverde.jpg



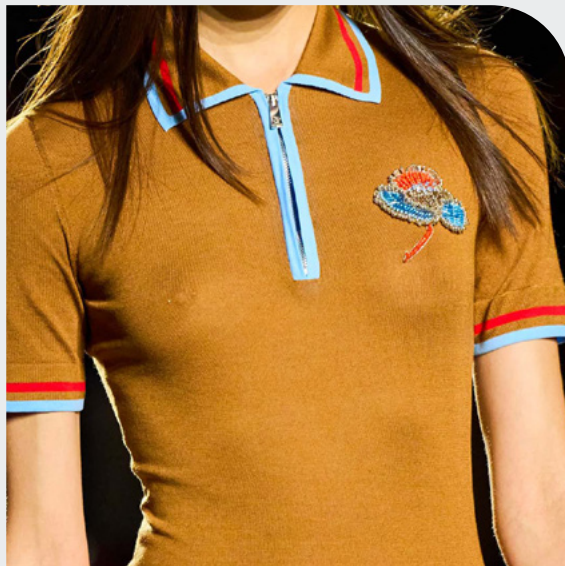
gabriela-hearst-073.jpg

EDGY TREND

METALLIC CHAINMAIL - ARMOR STITCH WITH METALLIC YARNS - MODERN KNIGHTS



streetstyle milano 159.jpg



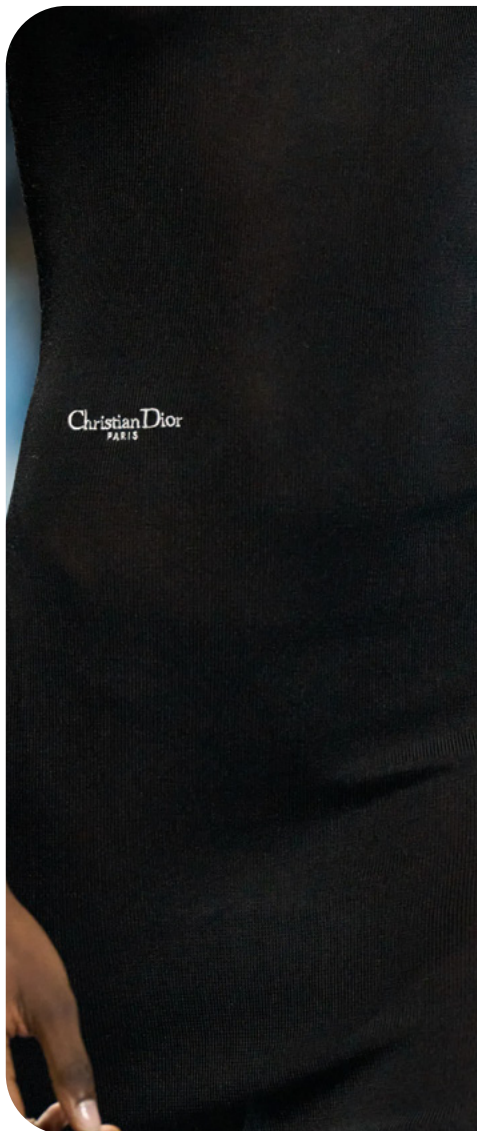
versace-032.jpg



zara63.jpg

SS26 KNITWEAR **TECHNICAL KNITS**

TECHNICAL SPORTY COMPACT KNITS



dior



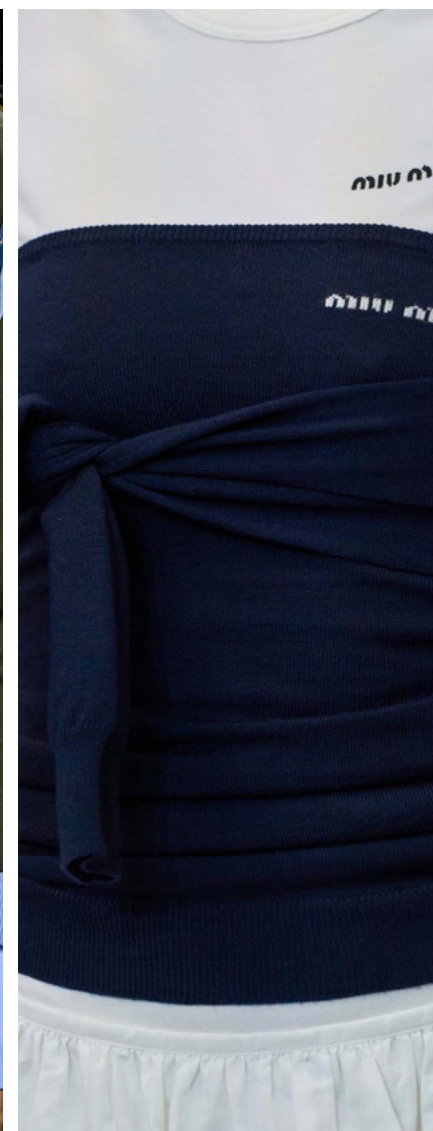
marant



@lookwhatyoumademeseesee/.png



Bluemarble 27.jpg



miu-miu-054.jpg

BIG TREND

TIGHT TENSION - CONTRASTING INTARSIA WITH JACQUARD LOGOS - SPORTY CONTRAST STRIPES

TECHNICAL FINE GAUGE



zara29.jpg



streetstyle paris 86.jpg



rouje2.webp



streetstyleparis82copy.jpg

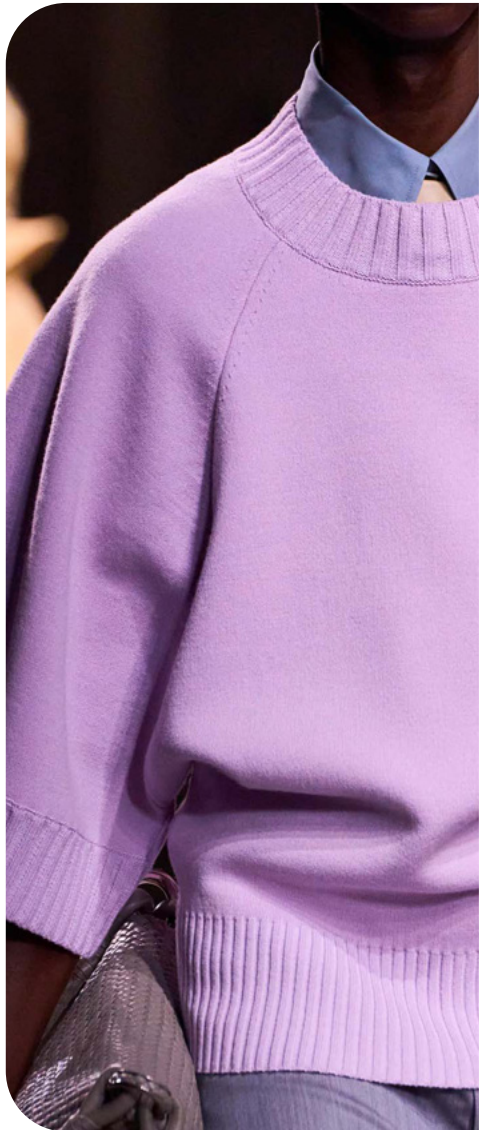


zara77.jpg

STABLE TREND

TIGHT TENSION - 10/12 GAUGE - WORSTED YARNS - ELEVATED SARTORIAL LOOK FOR CLEAN BASICS

TECHNICAL HEAVY COMPACT KNITS



bottega-veneta-039.jpg



comey-065.jpg



kronthaler-westwood-031.jpg



Ferrari-1.jpg



zara56.jpg



zara62.jpg

SAFE TREND

TIGHT TENSION PLAIN KNITS - 5/7 GAUGE - STIFF EFFECT

TECHNICAL TECHNICAL RETRO KNITS



casablanca-121.jpg



acne.webp



@mytheresaman2.png



shiatzy-chen-045.jpg



Loewe 31.jpg

EARLY SIGN

JACQUARD KNIT - THREE DIMENSIONAL RETRO PATTERNS - NEO RIBS & CABLE KNITS

TECHNICAL TROMPE L'OEIL KNITS



Diesel-1.jpg



Prada 50.jpg



gabriela-hearst-055.jpg



Marco Rambaldi 9.jpg



vaillant-024.jpg

EDGY TREND

INTARIA OR JACQUARD - MEDIUM GAUGE - ELEMENTS OF GARMENT DETAILS AND BODY SILHOUETTES

TECHNICAL SCULPTURAL COMPACT KNITS



Cfcl-054.jpg



prada



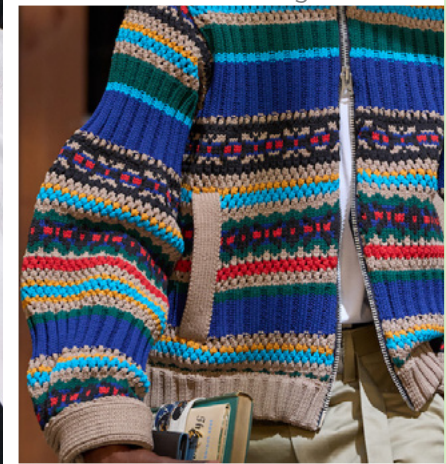
ulla johnson



missoni-043.jpg



bottega



Sacai19.jpg

EDGY TREND

TIGHT TENSION - SCALLOPPED OR ZIG ZAG HEMS - SCULPTURAL VOLUME

TECHNICAL TWISTED CONSTRUCTIONS



pillings_2025ss_035.jpg



acne-clp-s25-107.jpg



miyake-027.jpg



miyake-032.jpg



Marie Adam-Leenaerd 29.jpg

EDGY TREND

LAYERED EFFECTS - MISPLACED HEMS OR BUTTONING TABS - UPSIDE-DOWN LOOKS



atxv 4.jpg



mcmanus-012.jpg



Feng Chen Wang 19.jpg

SS26 KNITWEAR **OPENWORKS**

OPENWORK COMPACT THICK GAUGE



Zegna 16.jpg



esber 2.png



0007/gabriela-hairst-spring-2025-ready-to-wear-detail-001-garunway.jpg.webp



Gift set \$250 - \$400 - All items by Pura



escvdo.jpg

STABLE TREND

SIMPLE OR DOUBLE CROCHET - TIGHT TENSION - THICK YARNS FOR COMPACT FEEL

OPENWORK STAGGERED EYELET STITCH



LOOK2-2.jpg



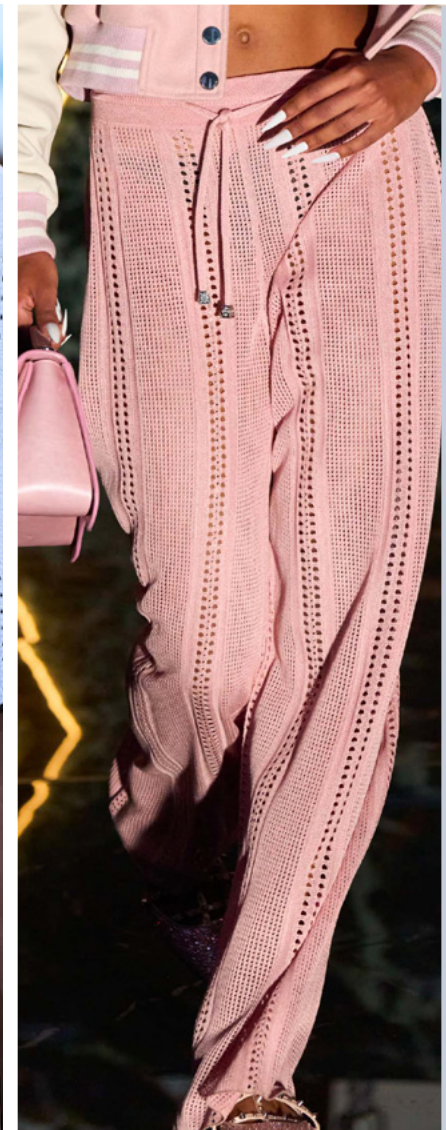
Miyake 17.jpg



ganni-074.jpg



Hermes 26.jpg



philipp-plein-103.jpg

SAFE TREND

STAGGERED LINEAR EYELET STITCH - REGULAR PERFORATION - SPORTY LOOK

OPENWORK DROP STITCH RIBS



cult gaai



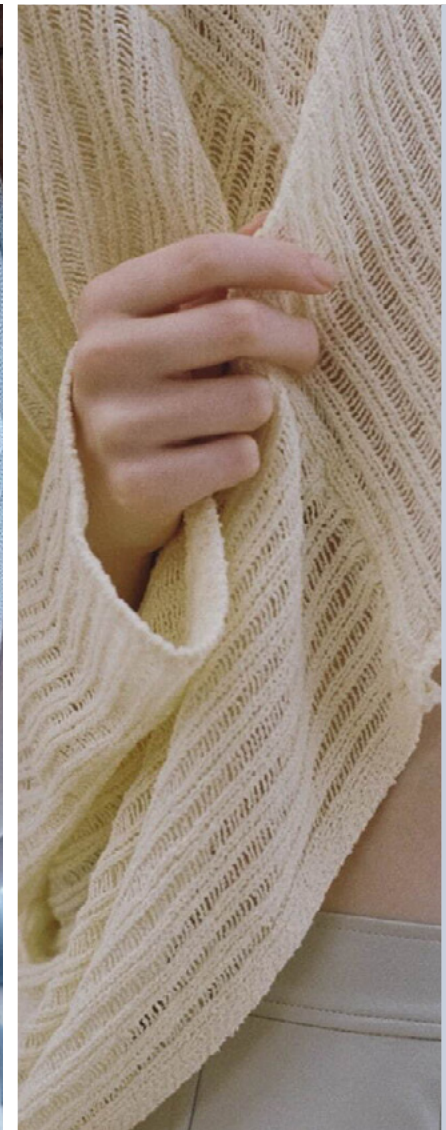
chloe.webp



acne studios



@ayamuse 2.png



Ameri_25ss_002.jpg

SAFE TREND

DROP STITCH RIB KNITS - WITH IRREGULAR OR REGULAR EFFECT - REBELLIOUS TRANSPARENCY

OPENWORK **WIDE LACE STITCH**



@tg.botanical2.png



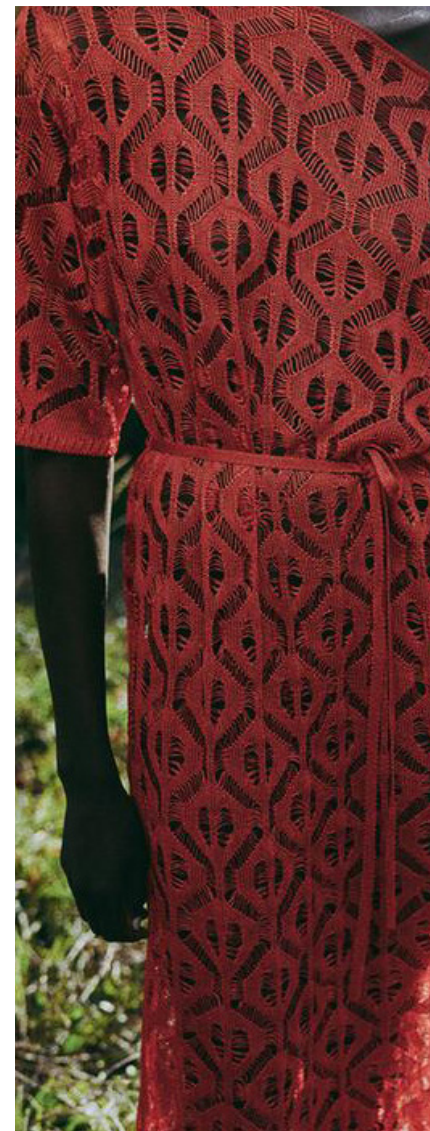
chloe



Mademoisellepairs.webp



zara61.jpg



zara51.jpg

SAFE TREND

WIDE TUNISIAN & LEAF LACE STITCH - LOSE TENSION - RAW YARNS

OPENWORK MESH STITCH



Gucci 5.jpg



Iceberg-10.jpg



Lacoste_lct_det_prs_ss25_067.jpg



Kenzo -29.jpg



casablanca-067.jpg

SAFE TREND

PERFORATED EFFECT - MESH CROCHET STITCH - SPORTY NET-LIKE LOOK

OPENWORK DELICATE POINTELLE



des phemmes



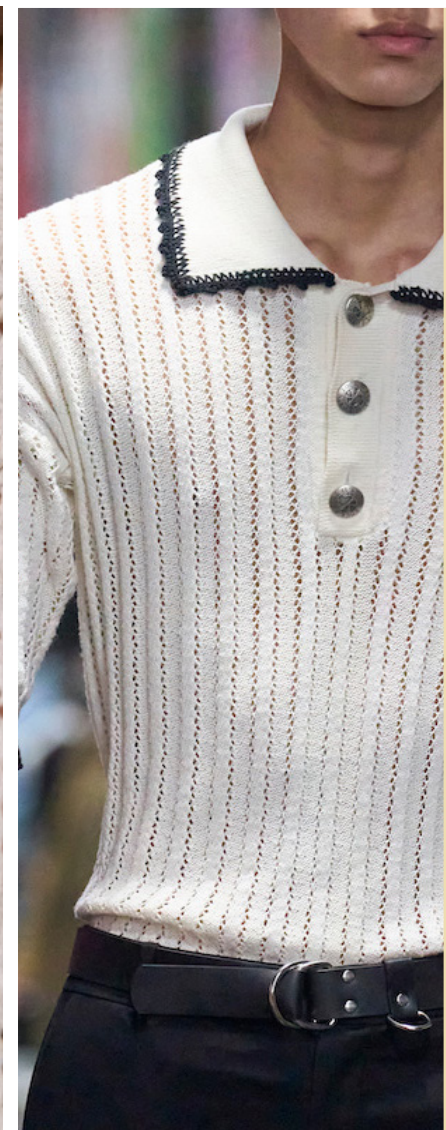
Magliano 42.jpg



rouje.webp



sezane.avif



John Richmond 15.jpg

STABLE TREND

MACHINE KNIT POINTELLE - VARIETY OF LACE STITCHES: CHEVRON, LEAF, EYELET

OPENWORK VINTAGE DOILY TECHNIQUES



magda butrym



@maimounstore2.jpg



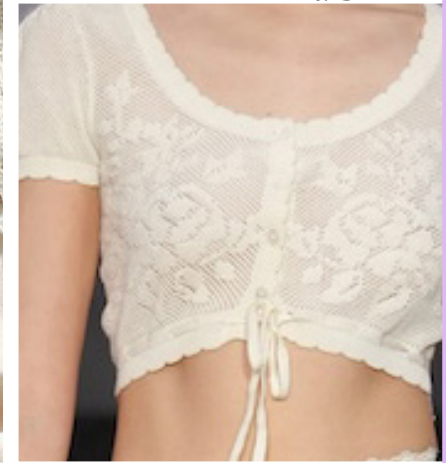
zara64.jpg



zara41.jpg



fiorucci 11.jpg

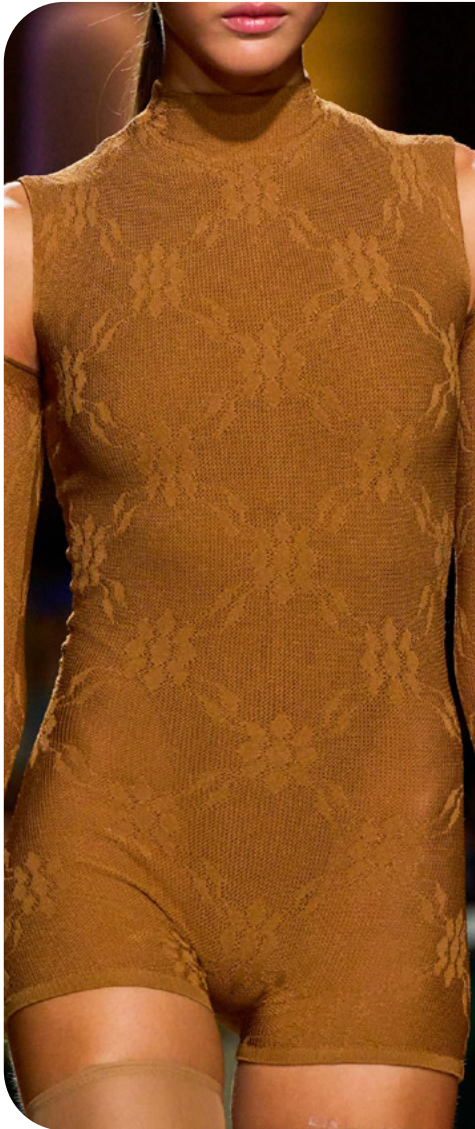


yuhan wang2.jpg

EARLY SIGN

DOILY CROCHET STITCH TYPICAL MOTIFS - FILET - HUMBLE NOSTALGIC ALLURE

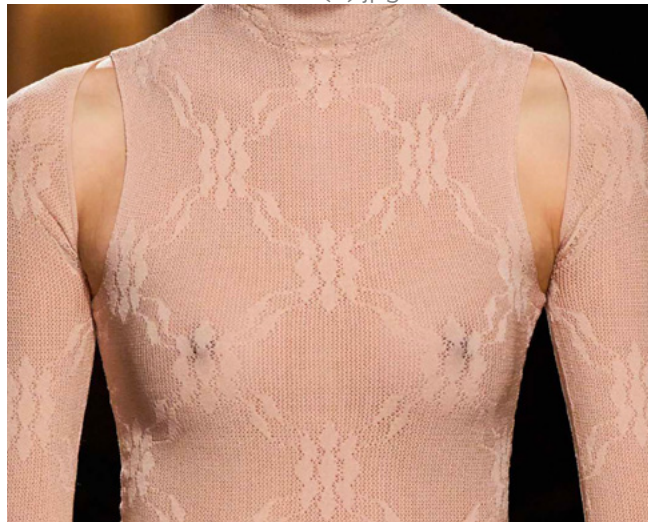
OPENWORK SEAMLESS JACQUARD MESH



victoria-beckham-096.jpg



Zara (3).jpg



victoria-beckham8.jpg



zara38.jpg



fleur du mal.webp

EARLY SIGN

COMPUTERIZED KNIT MESH JACQUARD - FLORAL LACE MOTIFS - TECHNICAL LOOK

ARTISANAL XL WEBS



Diesel-2.jpg



stella mccartney



diesel-012.jpg



cult gaia



zara44.jpg

EDGY TREND

ARTISANAL KNIT: LARGE DROP NEEDLE - WEB WORK - DISTRESSED EFFECT



Aeron2.jpg



gcds-029.jpg



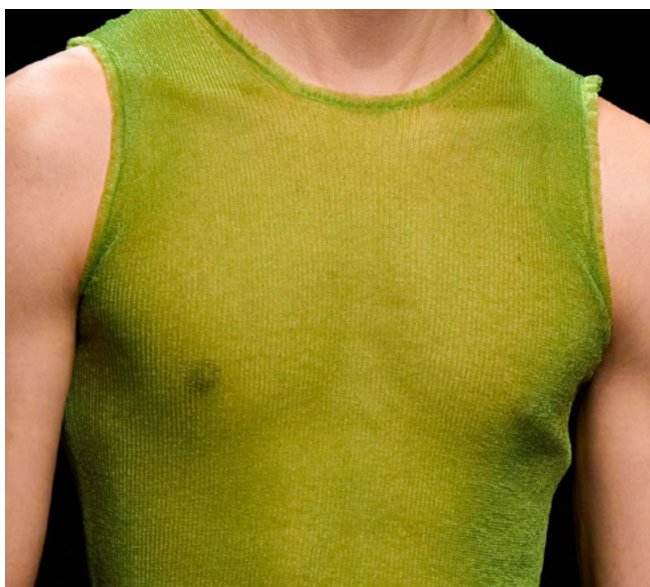
16Arlington 13.jpg

SS26 KNITWEAR **SHEERS**

SHEER FINE GAUZE



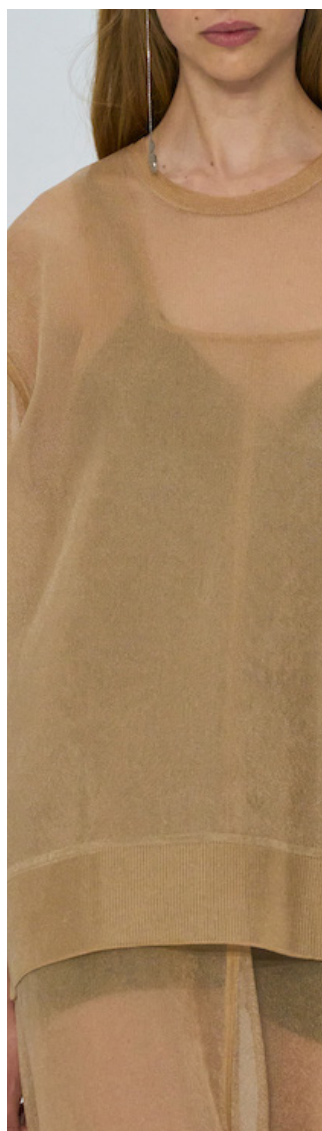
kronthaler-westwood-025.jpg



gcds-019.jpg



ports1.jpg



anteprima.jpg



esber



fashion-press

STABLE TREND

REGULAR 12/14 GAUGE - LOOSE TENSION KNIT - BARELY-THERE ALLURE

SHEER FINE RIBS



sourceunknown13.jpg



scervino-030.jpg



Sportmax 6.jpg



gcds-029.jpg



Cfcl-011.jpg



Cfcl-056.jpg

SAFE TREND

SMALL RIBS - 9/12 GAUGE - HIGH TORSION YARNS - PASTEL SHADES TO ENHANCE THE ETHEREAL FEEL



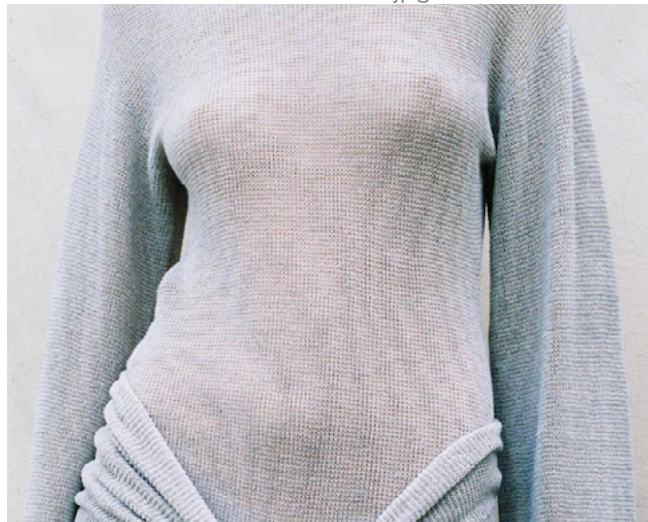
SHEER IMPERFECT GAUGE



fluss_25_ss_001.jpg



acnestudios3.jpg



@ayamuse 9.png



demeulemeester-055.jpg



sunnei 3.jpg

EARLY SIGN

LOOSE TENSION KNIT - IRREGULAR SPUN YARNS FOR POETIC EFFECT



@ayamuse 6.png



pillings_2025ss_064.jpg



@diotima4.png

SS26 KNITWEAR EMBELLISHMENTS & FINISHINGS

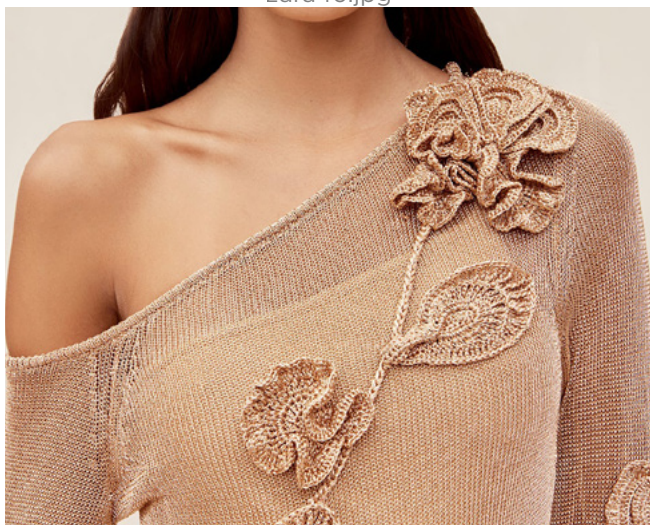
EMBELLISHED 3D FLORALS



@sandrol.jpg



zara46.jpg



Cult Gaia.jpg



franchi



pillings_2025ss_058.jpg



Alejandra Alonso Rojas.jpg

STABLE TREND

APPLIQUÉ OR EMBROIDERED FLORAL FEATURES - 3D GARDEN LOOK

EMBELLISHED BEJEWELLED OPENWORKS



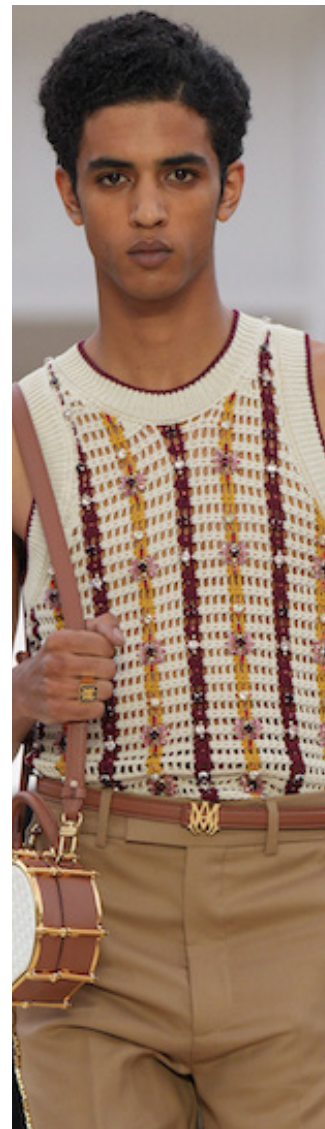
@clemdelacreme.jpg



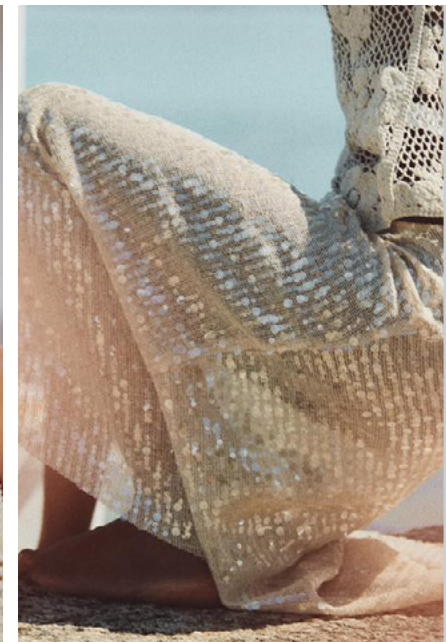
@commas-4.png



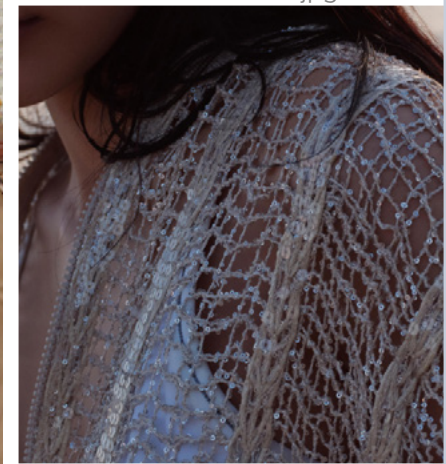
@robertaëiner3.jpg



Amiri 42.jpg



zara36.jpg



@brunellocucinelli3.png

SAFE TREND

SEQUINS - MOTHER OF PEARLS - BEADS - JEWELS

EMBELLISHED ROUGHLY COATED



prada



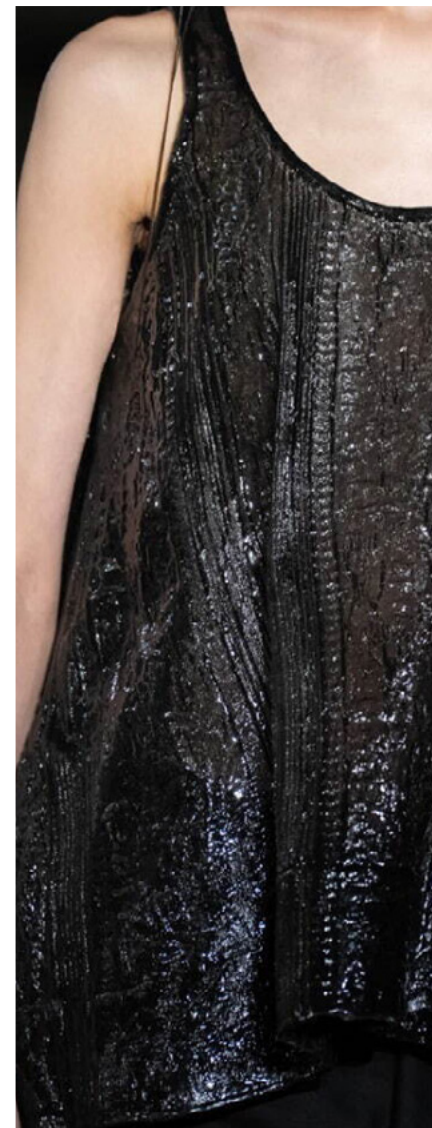
rabanne-027.jpg



@tg.botanical3.png



ulla johnson



pillings_2025ss_064.jpg

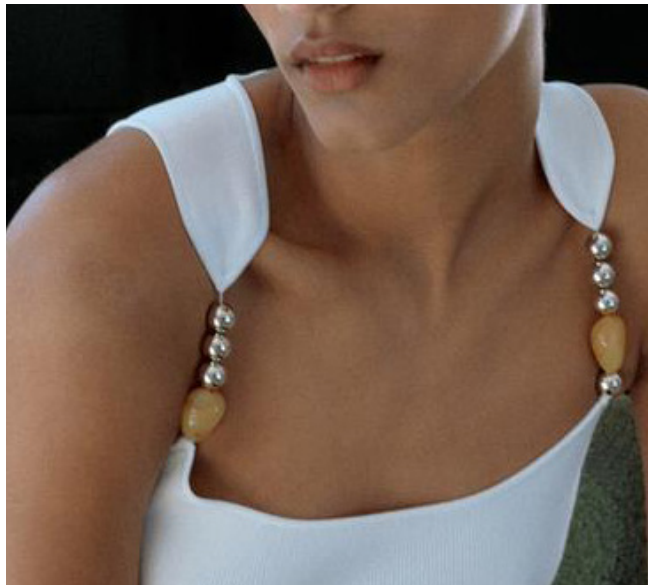
EARLY SIGN

COATED FINISHING ON OPENWORK - CROCHET - RIBS - CABLE KNITS

EMBELLISHED INTEGRATED JEWELS



moschino5.jpg



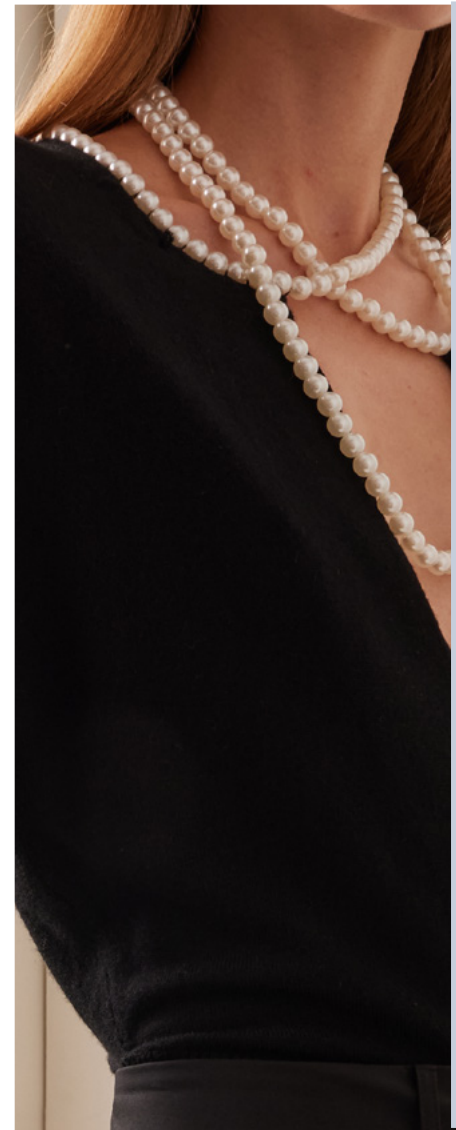
zara54.jpg



cult gaia



marant-037.jpg



zimmamambakcaushredkacedabachmeinhowodsvelajpg

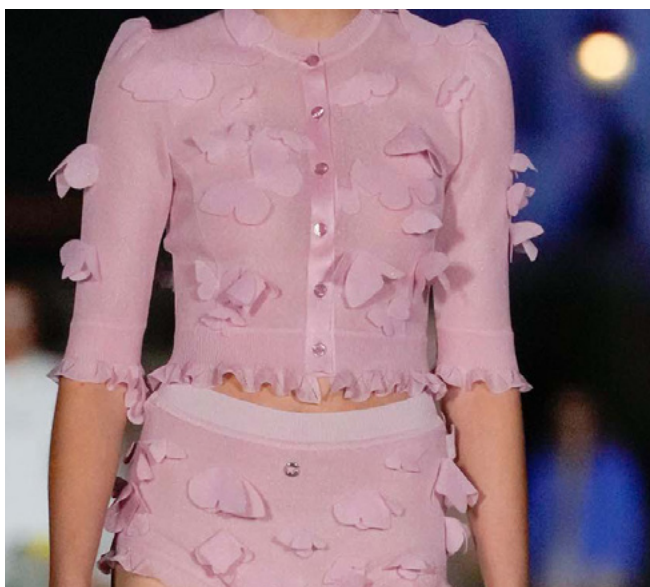
SAFE TREND

BEAD AND JEWEL EMBELLISHMENTS ON STRAPS OR IN CUT-OUTS

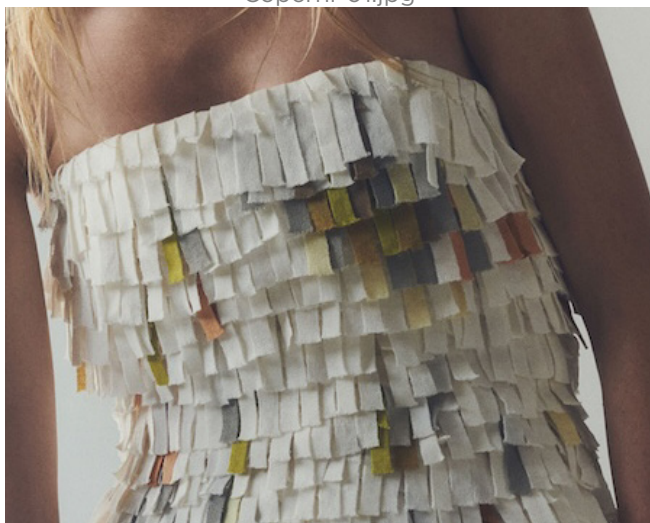
EMBELLISHED **LAYERED 3D ELEMENTS**



ulla johnson



Coperni-01.jpg



Lafayette_2.jpg



nanushka



Lafayette_6.jpg

EDGY TREND

LAYERED SCALLOPED APPLICATIONS - 3D KNITS - MOVING ELEMENTS

HEMS SCALLOP CROCHET RUFFLES



chloe-084.jpg



acne-113.jpg



chloe-063.jpg



zimmermann-100.jpg



ralph-lauren-094.jpg

SAFE TREND

SCALLOP STITCH CROCHETS ON HEMS - LAYERED FOR A RUFFLE EFFECT

HEMS IRREGUALR HEMS



acne-clp-s25-063.jpg



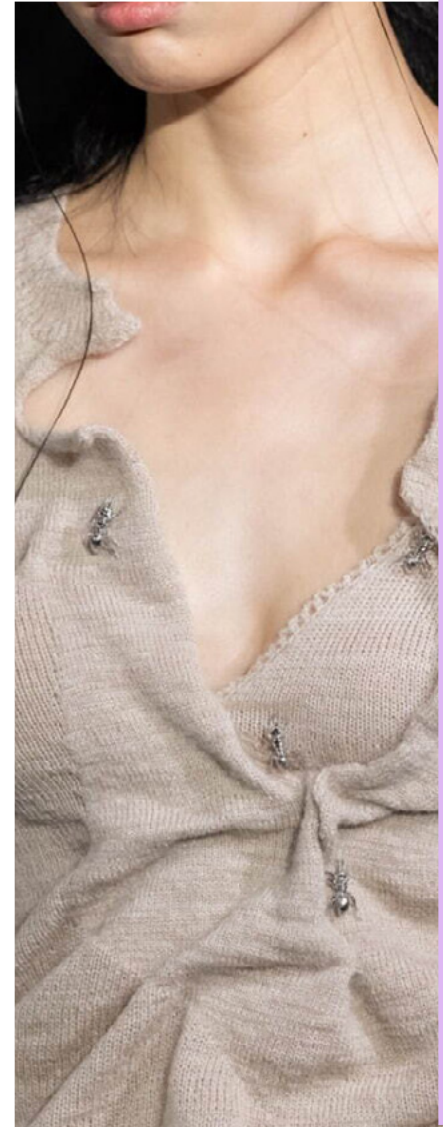
ferragamo-035.jpg



cara-cara-brown-rosendale-top.jpg



streetstyle paris 43.jpg



pillings_2025ss_039.jpg

EARLY SIGN

REGULAR OR IRREGULAR SCALLOP FOR A CREATIVE HEM OR NECKLINE

HEMS WIRED HEMS



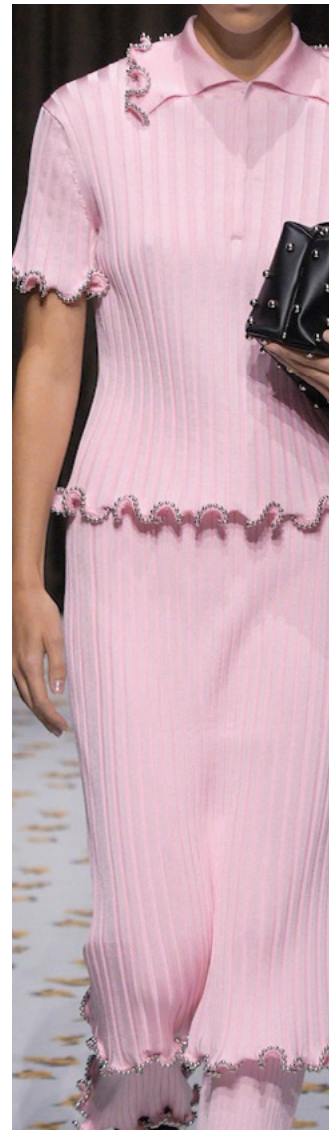
del core -3.jpg



ester-manas-068.jpg



loga -5.jpg



Jil Sander _13.jpg



18_624-2119-K_0402_900x.jpg.webp

EDGY TREND

WIRED HEMS OR EXTREME STRUCTURED LETTUCE HEMS FOR A SCULPTURAL LOOK



diesel 2.jpg



Gcds.webp



holzweiler

SS26 KNITWEAR **KEY MOTFIS**

MOTIFS OPTICAL STRIPES



bode 5.webp



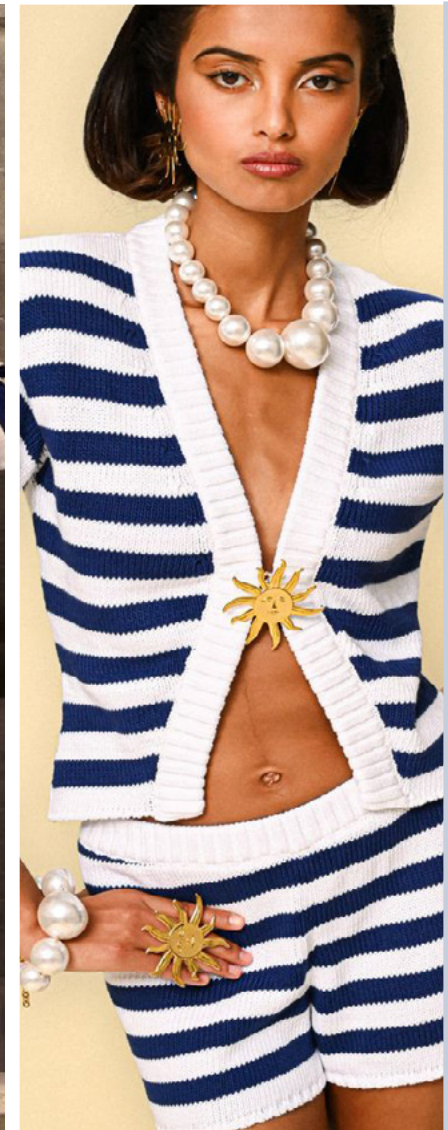
bottega



Dolce & Gabbana41.jpg



@mytheresamen_13.png



rowenrose_4.jpg

SAFE TREND

BLOCK STRIPES - BRETON STRIPES - OPTICAL EFFECTS - BOLD GRAPHIC LOOK

MOTIFS TECHNO STRIPES



streetstyle milano 76.jpg



Jacquemus.jpg



versace 24.jpg



Bottega Veneta.jpg



Giorgio Armani 26.jpg

SAFE TREND

OPTICAL ILLUSIONS - ABSTRACT ANIMALIER - DIAGONAL MIX - COLOR BLOCKING

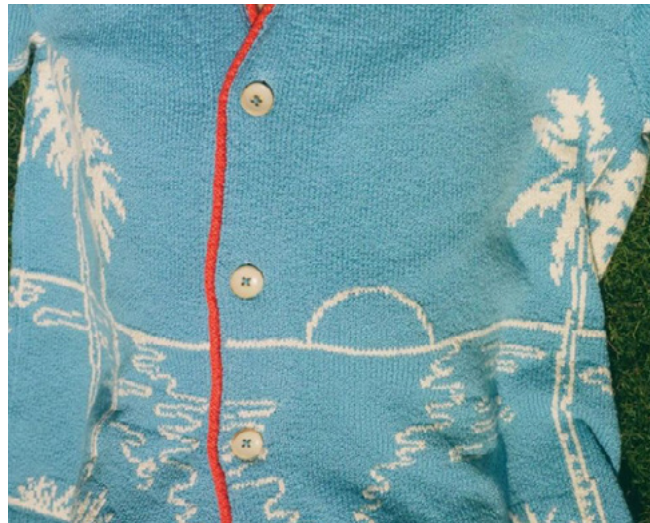
MOTIFS SCENIC JACQUARDS



Copenhagen Streetstyle 24.jpg



holzweiler



@theelderstatesman3.png



holzweiler



Dior 43 copy.jpg

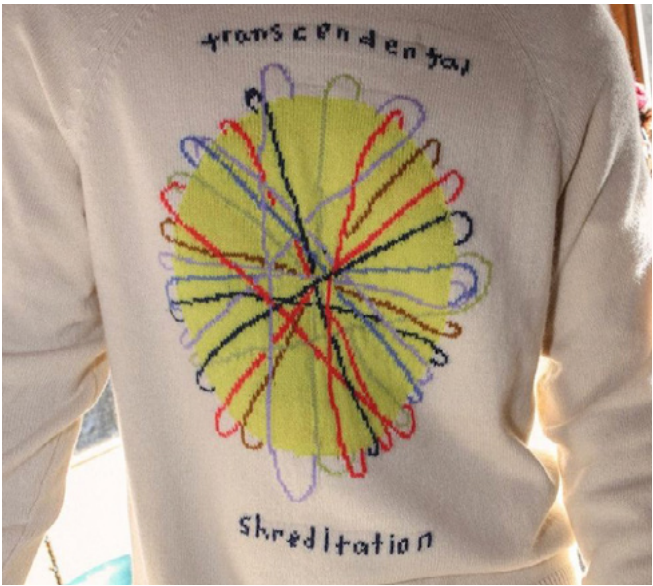
STABLE TREND

IMMERSIVE JACQUARDS - HOLIDAY MOTIFS OR SURREAL LANDSCAPES - NAIVE

MOTIFS CENTER STAGE



@theelderstatesman1.png



@theelderstatesman2.png



Magliano 49.jpg



bluemarble6.jpg



Dior 30.jpg

STABLE TREND

PLACED JACQUARD MOTIFS - LARGE-SCALE MOTIFS - INTARSIA

DATA SOURCES & ICONS

TREND GROWTH



MARKET

YEAR ON YEAR TREND GROWTH ON E-COMMERCE



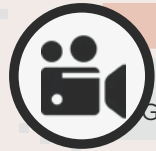
SOCIAL MEDIA

YEAR ON YEAR TREND GROWTH ON INSTAGRAM



CONSUMER INTEREST

YEAR ON YEAR GROWTH OF ONLINE SEARCH VOLUMES



FASHION SHOWS

YEAR ON YEAR TREND GROWTH ON FASHION SHOWS

TREND BEHAVIOR

EDGY TREND

weak signal of a potential micro trend with very high risk

EARLY SIGN

emerging trend with growing perspective but higher risk

SAFE TREND

announced trend with growing perspective and safe risk

BIG TREND

trend with a big magnitude due to high commercial potential and quick adaption

STABLE TREND

trend that is already present in the market with flat growth

LAST CALL

trend with decreasing perspective but still having business potential

TREND MAGNITUDE



MANIFEST

AN ICONIC PRODUCT THAT IS A STABLE TREND OF LARGE MAGNITUDE WITH CONFIRMED COMMERCIAL SUCCESS



INVEST

A CORE PRODUCT REPRESENTING A STEADILY GROWING TREND OF MODERATE MAGNITUDE WITH COMMERCIAL POTENTIAL



TEST

A STATEMENT PRODUCT WITH GROWING PERSPECTIVE BUT SMALLER MAGNITUDE AND HIGHER RISK



DATA TO DRIVE

01 CREATIVITY

02 STRATEGY

03 SUSTAINABILITY



LIVETREND

THANK YOU!

You may not copy, reproduce, distribute, publish, display, perform, modify, create derivative works, transmit, or in any way exploit any such content, nor may you distribute any part of this content over any network, sell or offer it for sale, or use such content to construct any kind of database. You may not alter or remove any copyright or other notice from copies of the content on any Livetrend report.

If you have further needs, please contact us via chat.