



**WOMENSWEAR**  
**SS 2026**  
**FORECASTING**  
**DRESSES**  
**KEY ITEMS**



LIVETREND

# SS26 DRESSES INTRODUCTION



## FORECAST

### Free-Spirited Femininity

The Spring/Summer 2026 dress trends mark a dramatic shift from slimline silhouettes to voluminous, feminine designs. Flowing shapes dominate, ranging from boho-inspired tunics and classic A-lines to dramatic balloon dresses and mini shift styles. Light, ethereal fabrics amplify the sense of movement and flounce details create a romantic and breezy aesthetic. Necklines steal the spotlight with hyper-elegant and feminine designs. Here we see cascading waterfall necklines, sultry deep plunges, sophisticated boat necks, and playful foulard halters, each elevating the dress into a statement piece. The intimate influence of nightwear continues to resonate, blending nostalgia with modernity. Vintage-inspired nightdresses exude charm, while youthful options reimagine through asymmetric lace dresses and 2000s romcom inspired styles. This season celebrates a harmonious blend of nostalgia and innovation, offering versatile options that transition effortlessly from day to night. Whether embracing the ease of boho or the structure of a statement balloon, SS26 dresses encapsulate a mood of hyper-femininity and free-spirited elegance.

*This forecasting report is realized crossreferencing LIVETREND data from several sources to empower the expertise of our Trend Analysts to forecast the trends with concrete and quantitative information. Find the related data sources and icons on the last slides.*

[ACCESS ALL IMAGES  
CLICKING HERE](#)

# SS26 DRESSES KEY DETAILS



MANIFEST



Margiela

THE LINGERIE



zara

SAFE TREND



INVEST



twinsset

THE FLOUNCY



zara

EARLY SIGN



INVEST



Christian Dior35.jpg

THE ASYMMETRY



Bottega

SAFE TREND

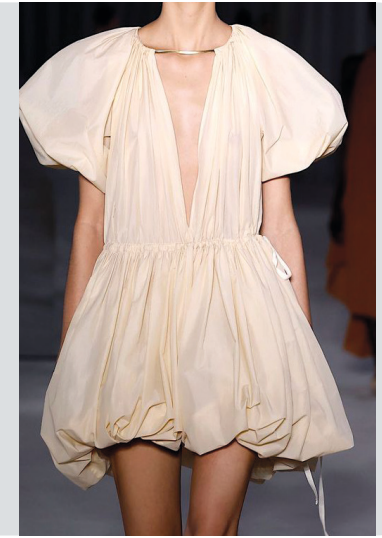


INVEST



-chloe- -.jpg

THE BUBBLE HEM



tod's

SAFE TREND

# SS26 DRESSES KEY DETAILS



INVEST



bec & bridge

THE WATERFALL



McCartney

STABLE TREND



MANIFEST



Chiara Robini

THE BOAT NECK



Staud

SAFE TREND

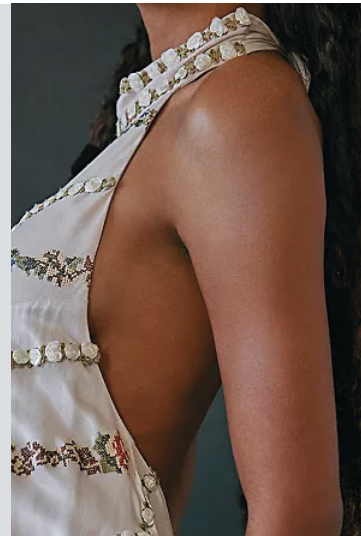


MANIFEST



silvia tscherassi6.jpg

THE HIGH HALTER



freepeople

STABLE TREND



INVEST



rowenrose\_6.jpg

THE SQUARED NECK



streetstyle

SAFE TREND

# DRESSES SS26 SPOTLIGHT



MANIFEST



INVEST



TEST

ROMCOM DRESS



Versace57.jpg

MINI A-LINE



carolina herrera

BOHO TUNIC



streetstyle milano 197.jpg

REWORKED LACE



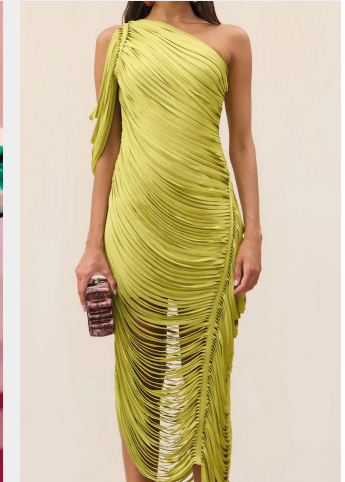
monse

BALLOON



ulla johnson

FLOATING YARNS



max mara

***This Trend Spotlight proposes the must-have products of the season to build the right assortment.***

This selection is made to ensure that you have the right collection staples, invest in the right core pieces and test the right trendy items within your product range.

Find the full list of seasonal core items on the next slides.

BIG TREND

# SS26 FLOUNCY BOHO TUNIC



streetstyle paris 52.jpg



Jaded5.jpg.webp



streetstyle milano 197.jpg



marant



chloe.webp



mirror1.png



sea

BIG TREND

# SS26 ROMCOM SLIP DRESS



c plus



prada 10.jpg



iceberg-13.jpg



ulla johnson



-zara2.jpg



the reformation



Versace57.jpg

STABLE TREND

# SS26 SLEEVELESS SHIFT DRESS



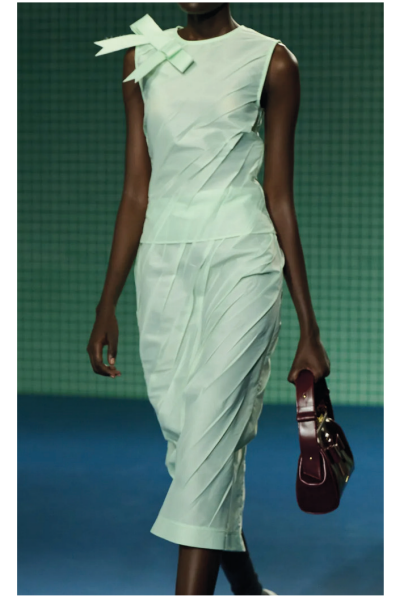
zara32.jpg



streetstyle milano 81.jpg



gucci-067.jpg



versace



staudt 2.jpg



Roberto Cavalli 4.jpg



Lafayette\_8.jpg



STABLE TREND

# SS26 MINI A-LINE DRESS



Shan Huq 13.jpg



loewe 5.jpg



gucci63.jpg



versace



forloveandlemons14.jpg.webp



Emilia Wickstead 6.jpg



freepeople 21.webp

STABLE TREND

# SS26 BOHO LACE DRESS



sea



philosophy32.jpg



zimmermann-087.jpg



eramanno scervino



zimmermann-092.jpg



freepeople 17.webp



Twinsset11.jpg

DRESSES

WOMENSWEAR

FORECASTING

SPRING/SUMMER 2026

STABLE TREND

# SS26 ROMANTIC MILKMAID DRESS



alejandra alonso



@chloelecareux 18.jpg



@helsastudio\_13.png



reformation



forloveandlemons6.jpg.webp



freepeople 25.webp



-zara6.jpg

BIG TREND

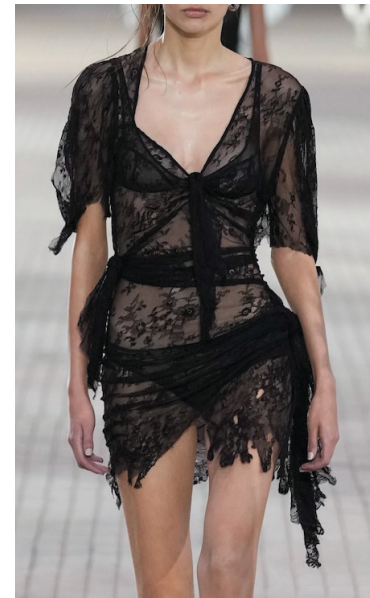
# SS26 REWORKED LACE DRESS



francoise



yuhang wang



The Attico 2.jpg



monse



demeulemeester 10.jpg



PhilosophydiLorenzoSerafini.jpg



Erdem 8.jpg

SAFE TREND

# SS26 PLUNGING HALTER DRESS



herrera 3.jpg



@erinwarn9.jpg



@ronnykobo6.png



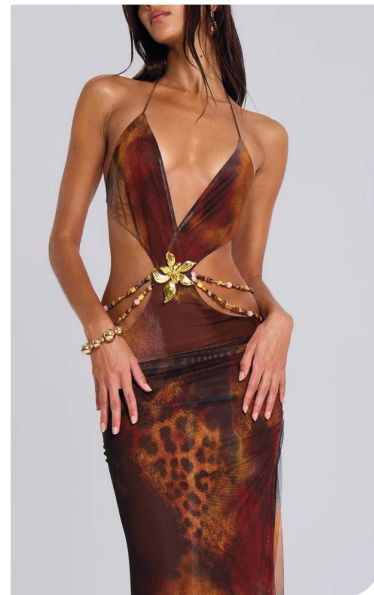
maxmara



avavav-041.jpg



rowenrose\_11.jpg



Jaded11.jpg.webp

BIG TREND

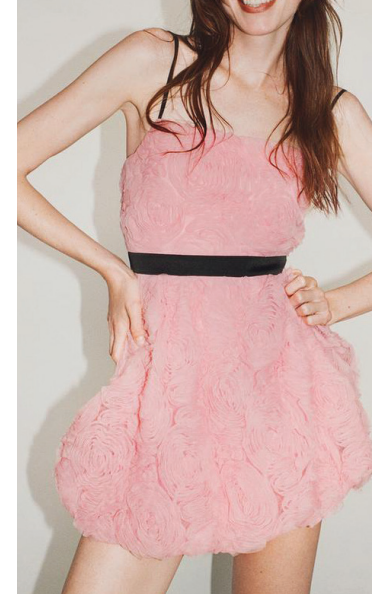
# SS26 BALLOON DRESS



-chloé-.webp



hong18.jpg



-zara12.jpg



ulla johnson



@esber1.png



Andreadamo8.jpg



dawei-po-s25-007-11478070.jpg



00030-stella-mccartney-spring-2025-ready-to-wear-credit-gorunway.webp



ATLEIN.webp



ferragamo



rambaldi



David Koma.webp



stella mccartney



BRONX AND BANCO.webp



SAFE TREND

# SS26 TUTU DRESS



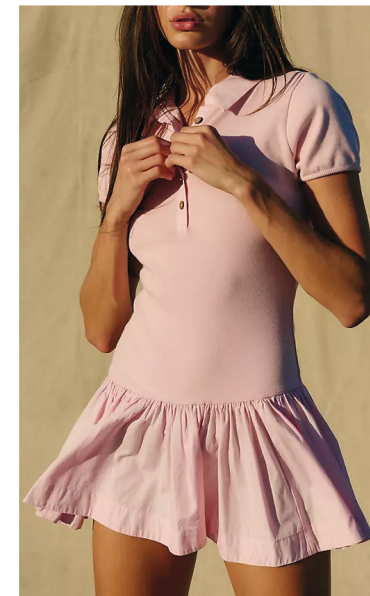
Ganni 10.jpg



Marques Almeida1.jpg



@helsastudio 2.png



urban outfitters



thereformation21.webp



Nina Ricci.jpeg



tg botanical6.jpg



STABLE TREND

SS26 **CHEMISIER**



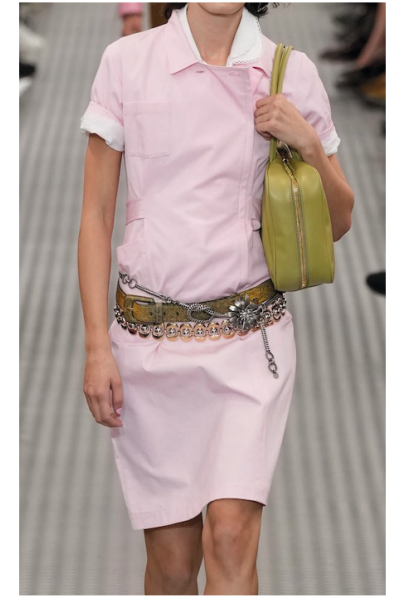
no 212.jpg



Christian Dior37.jpg



-zara1.jpg



miumiu



time



Fendi7.jpg



bottega

STABLE TREND

# SS26 CASCADING LOOK



mcqueen 26.jpg



mirrortalais8.jpg.webp



collina strada 9.jpg



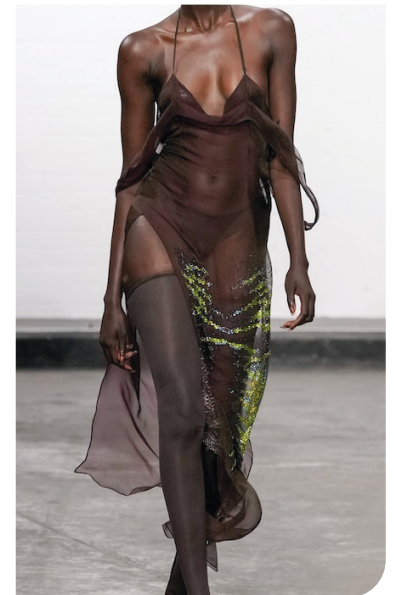
freepoople



gicheviktor4.png



-zara18.jpg



masha popova-2.jpg

DRESSES

WOMENSWEAR

FORECASTING

SPRING/SUMMER 2026

SAFE TREND

# SS26 REWORKED TUBE DRESS



miu-miu-037.jpg



Etro 4.jpg



n-21-026.jpg



domino tan



miumiui 6.jpg



janques wei



versace-056.jpg



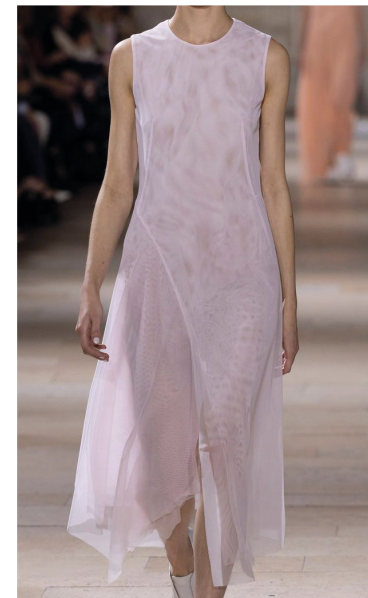
Ermanno Scervino 3.jpg



Aniye Records21.jpg



fendi 28.jpg



aknvas



sportmax-.webp



- fendi - .webp



philosophy





thereformation20.webp



zara34.jpg



no21



versace



marni



erdem.webp



gucci 13.jpg

SAFE TREND

SS26 **OTHER TRENDY SIGNS**



the Frankie Shop.webp



CHANEL.webp



pain de sucre.webp



missoni.webp



simkhai .webp



@12THtribe.jpg

**BLUE COLLAR JUMPSUIT**

**FRINGE DRESS**

EARLY SIGN

# SS26 VINTAGE NIGHTDRESS



thereformation11.webp



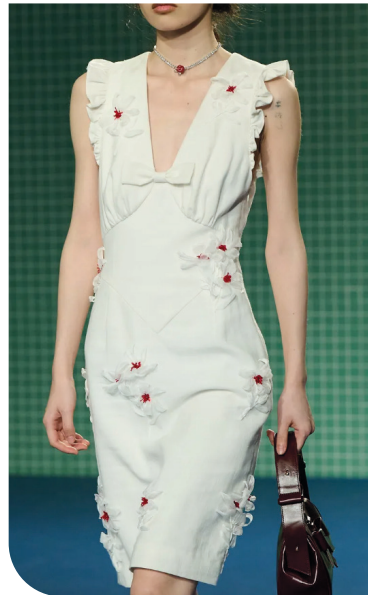
HUI14.jpg



zara



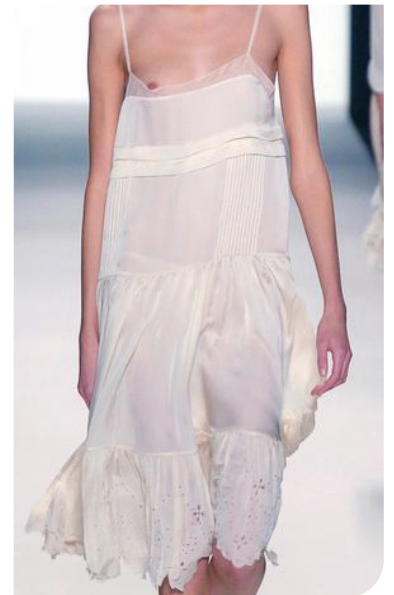
all that remains



shushu tong



miu-miu-038.jpg



chloe 2005.jpeg

EARLY SIGN

# SS26 DEEP SCOOPING MINI



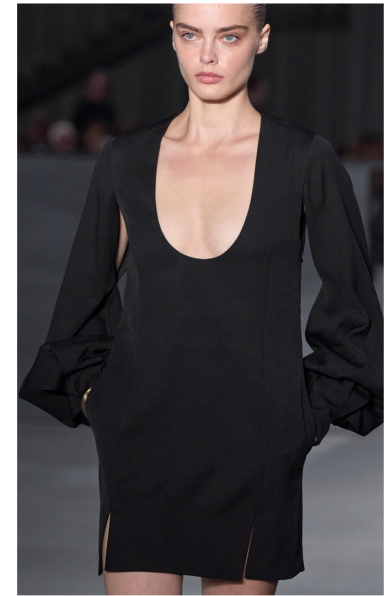
Cult Gaia2.jpg.webp



ferragamo-039.jpg



gucci 4.jpg



philosophy



valli2.jpg



chanel-132.jpg



Emilia Wickstead 2.jpg

DRESSES

WOMENSWEAR

FORECASTING

SPRING/SUMMER 2026





EARLY SIGN

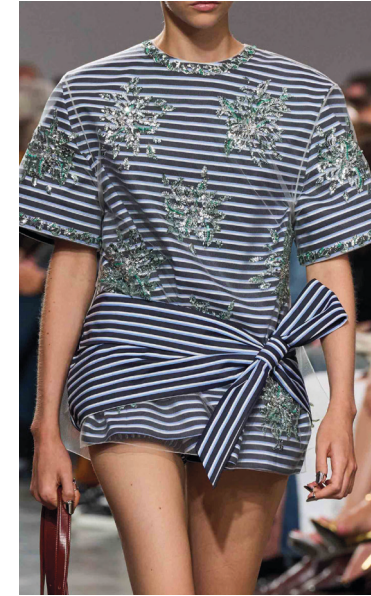
SS26 TEE DRESS



sir2.jpg.webp



acne-060.jpg



rabanne28.jpg



natasha zinko



Anteprima8.jpg



Rabens Salone.webp



fendi12.jpg

DRESSES

WOMENSWEAR

FORECASTING

SPRING/SUMMER 2026

EARLY SIGN

# SS26 FOULARD HALTER NECK



thereformation2.webp



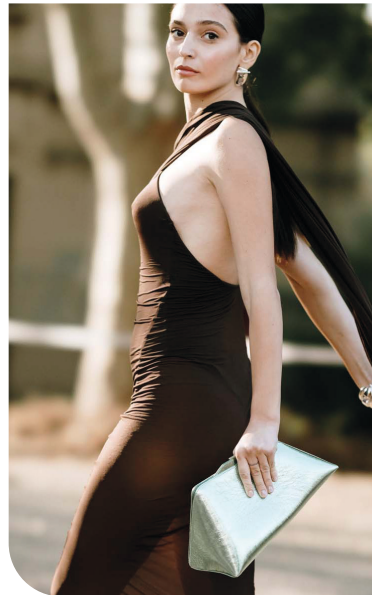
-zara15.jpg



attico



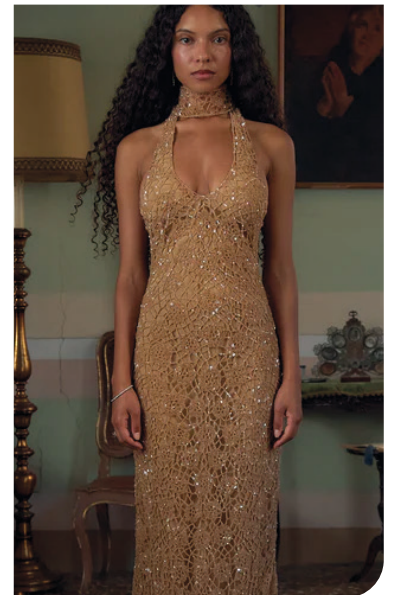
rambaldi



streetstyle milan\_68.jpg



siedres



mirrorpalais4.jpg.webp

EDGY TREND

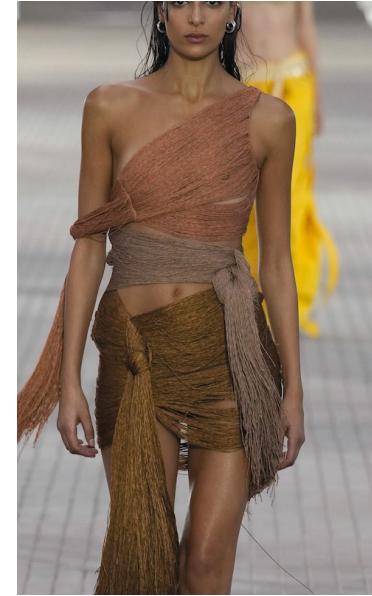
# SS26 DARING WEBS



the-attico-webp



TheAttico51.jpg



The Attico 9.jpg



cult gaia



burberry-061.jpg



scervino28.jpg



georgia hardinge

DRESSES

WOMENSWEAR

FORECASTING

SPRING/SUMMER 2026



# DATA SOURCES & ICONS

## TREND GROWTH



### MARKET

YEAR ON YEAR TREND GROWTH ON E-COMMERCE



### SOCIAL MEDIA

YEAR ON YEAR TREND GROWTH ON INSTAGRAM



### CONSUMER INTEREST

YEAR ON YEAR GROWTH OF ONLINE SEARCH VOLUMES



### FASHION SHOWS

YEAR ON YEAR TREND GROWTH ON FASHION SHOWS

## TREND BEHAVIOR

### EDGY TREND

weak signal of a potential micro trend with very high risk

### EARLY SIGN

emerging trend with growing perspective but higher risk

### SAFE TREND

announced trend with growing perspective and safe risk

### BIG TREND

trend with a big magnitude due to high commercial potential and quick adaption

### STABLE TREND

trend that is already present in the market with flat growth

### LAST CALL

trend with decreasing perspective but still having business potential

## TREND MAGNITUDE



### MANIFEST

AN ICONIC PRODUCT THAT IS A STABLE TREND OF LARGE MAGNITUDE WITH CONFIRMED COMMERCIAL SUCCESS



### INVEST

A CORE PRODUCT REPRESENTING A STEADILY GROWING TREND OF MODERATE MAGNITUDE WITH COMMERCIAL POTENTIAL



### TEST

A STATEMENT PRODUCT WITH GROWING PERSPECTIVE BUT SMALLER MAGNITUDE AND HIGHER RISK



## DATA TO DRIVE

01 CREATIVITY

02 STRATEGY

03 SUSTAINABILITY



LIVETREND

# THANK YOU!

You may not copy, reproduce, distribute, publish, display, perform, modify, create derivative works, transmit, or in any way exploit any such content, nor may you distribute any part of this content over any network, sell or offer it for sale, or use such content to construct any kind of database. You may not alter or remove any copyright or other notice from copies of the content on any Livetrend report.

**If you have further needs, please contact us via chat.**