



**KIDSWEAR**  
**SS 2025**  
**FORECASTING**  
**SKIRT &**  
**DRESSES**



LIVETREND

# KIDSWEAR SS25 INTRODUCTION



c'eraunavolta.png



@SOLIDAY.jpeg



olive-naturalwear.jpeg



marigold-modernkids.jpeg



## FORECAST

**Cool & Charmy.** As we delve into the forecast for kids' attire, it's evident that a blend of whimsical charm and practicality will dominate the upcoming season. As for womenswear, longer option for skirt and dresses are strongly emerging as a prominent trend. Tulle makes a come back, embracing the balletcore trend with grace and elegance, adorning skirts and dresses alike. Cottagecore continues to influence girls' wardrobes, with fresh cotton doll dresses featuring charming checkered patterns and timeless smock detailing. Retro quaint embroideries add a vintage touch to contemporary styles, infusing them with nostalgia and charm. Linen is a major fiber for sundresses and those styles present unexpected designs at the back, elevating these summer staples to new fashion pieces. Practicality is always a must in kids' fashion, so sets are replacing part of dress range, offering tops or shirts paired with bermuda shorts or pants in plain or printed fabrics, ensuring comfort and style go hand in hand.

*This forecasting report is obtained crossreferencing LIVETREND data from several sources to empower the expertise of our Trend Analysts to forecast the trends with concrete and quantitative information. Find the related data sources and icons on the last slides.*

[ACCESS ALL IMAGES  
CLICKING HERE](#)

# KEY ITEMS SKIRTS SS25



INVEST



@soffalvarez.jpeg



nzkidzzz 2.avif



\_zara-.jpeg



comme des garcons 1.avif



zarakids.jpeg

STABLE TREND

## THE PLEATED SKIRT



INVEST



cover.jpeg



totolino.jpeg



zara\_kids.jpeg



zara+kids.jpeg



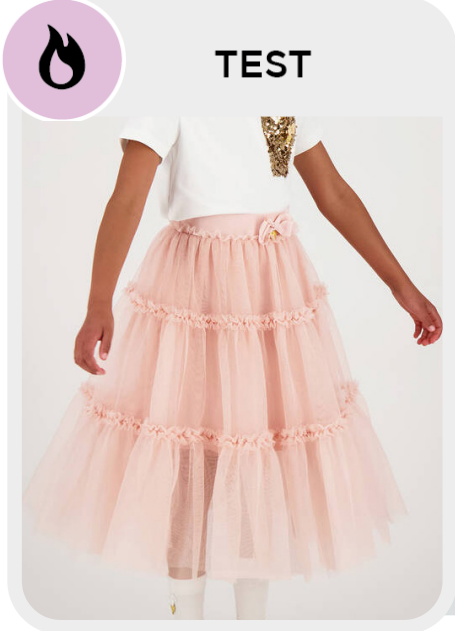
-thesundaycollective.webp

EARLY SIGN

## THE LONGER SKIRTS

# KEY ITEMS SKIRTS SS25

## THE TULLE SKIRT



TEST

angels face2.jpg



@aneettelewis.jpeg



whistles+.jpeg

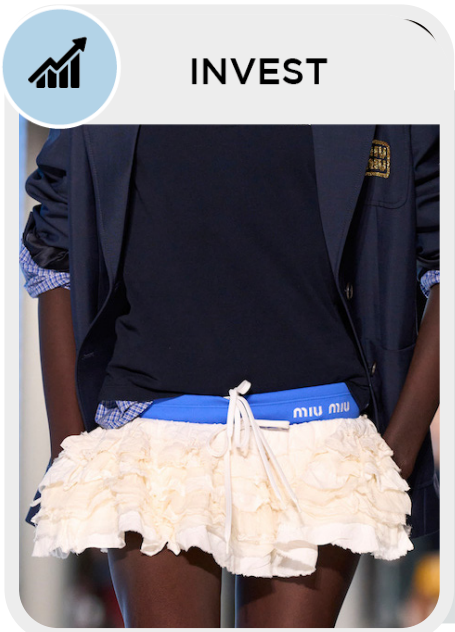


1Nkids.jpeg



zara6.jpeg

SAFE TREND



INVEST

miu-miu-\_1.jpg



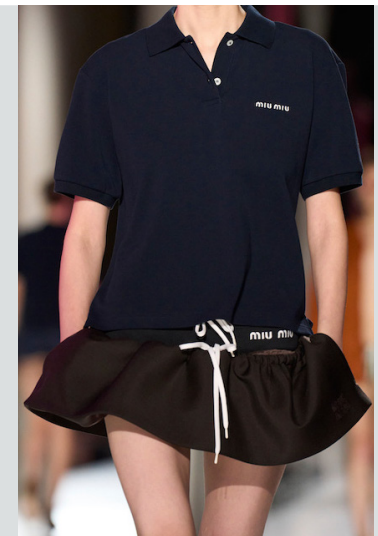
loveshackfancy.webp



CRLNBSMNS.avif



loewess24.webp



miu-miu-2.jpg

EARLY SIGN

## THE MINI RUFFLED FLARE

# KEY ITEMS DRESSES SS25



MANIFEST



THENEWSOCIETY.webp



ilgufo.jpeg



morley\_ss24.jpg



-\_ZARA\_.jpeg



molo.jpeg

SAFE TREND



MANIFEST



MILLIE&JOHN.jpeg



maisonette.jpeg



emile&ida.webp



wolf&rita.webp



yidzudui.jpeg

SAFE TREND

## THE COTTON DOLL DRESS

## THE CHECKERED DRESS

# KEY ITEMS DRESSES SS25



INVEST



Hei

UNIQLO.webp



zoya fashion2.png



MANGO KIDS.avif



minimoda.jpg



zara dress2.jpg

STABLE TREND



TEST



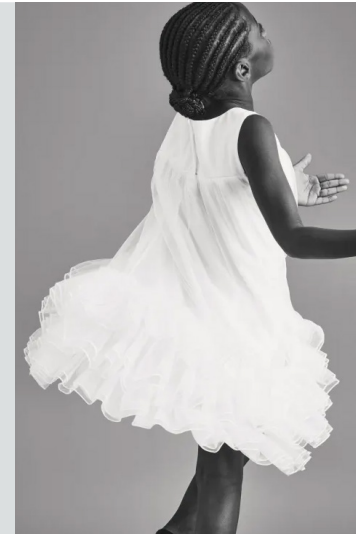
@bunnyhat.jpeg



the sunday collective.webp



mimisol.png



hm tutu dress.webp



-tia-ciabani.webp

EARLY SIGN

## THE MINIMAL DRESS

## THE BALLETCORE DRESS

# KEY ITEMS DRESSES SS25



## MANIFEST



@soliday-kids.jpeg



nelly stella1.jpg



hannahrosevintageboutique.jpg



mango dress.jpg



mango 4.jpg

SAFE TREND



## INVEST



tartine&chocolat.webp



@littlelinestories.jpeg



@marigold-modernkids.webp



olive-naturalwear.jpeg



retro quaint pattern.jpg

SAFE TREND

## THE LINEN SUNDRESS

## THE RETRO QUAINT EMBROIDERIES

# KEY ITEMS DRESSES DETAILS SS25



INVEST



zara kids.jpg



DRESSMYSTRALIA.webp



marigold.com.webp



@abel&lula.jpeg



@arabella&rose.jpeg

## THE SURPRISING BACKLINE

SAFE TREND



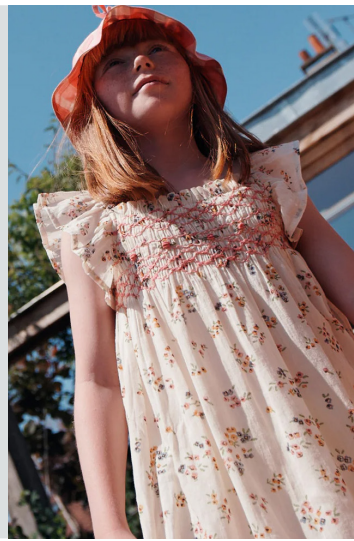
MANIFEST



marigold-.webp



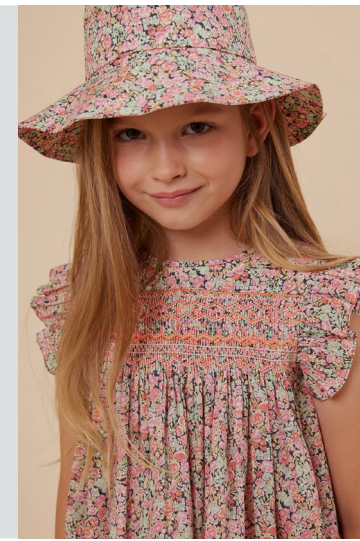
the new society-.webp



emile & ida.webp



-tartine&chocolat-.webp



Bonpoint.webp

## THE SMOCK

STABLE TREND



# KEY ITEMS JUMPSUITS & SETS SS25

## THE WORKWEAR JUMPSUIT



TEST



asos.png



zara jumpsuit1.jpg



fahionova kids.jpeg



the-animal-observatoryjump.avif



zara jumpsuit.jpg

STABLE TREND



MANIFEST

## THE TOP & BERMUDA SET



bebe organics.webp



=shein=.jpeg



bebeorganic.webp



@ghanda.jpeg



@wearethesnewsociety-5.png

SAFE TREND

# DATA SOURCES & ICONS

## TREND GROWTH



### MARKET

YEAR ON YEAR TREND GROWTH ON E-COMMERCE



### SOCIAL MEDIA

YEAR ON YEAR TREND GROWTH ON INSTAGRAM



### CONSUMER INTEREST

YEAR ON YEAR GROWTH OF ONLINE SEARCH VOLUMES



### FASHION SHOWS

YEAR ON YEAR TREND GROWTH ON FASHION SHOWS

## TREND BEHAVIOR

### EDGY TREND

weak signal of a potential micro trend with very high risk

### EARLY SIGN

emerging trend with growing perspective but higher risk

### SAFE TREND

announced trend with growing perspective and safe risk

### BIG TREND

trend with a big magnitude due to high commercial potential and quick adaption

### STABLE TREND

trend that is already present in the market with flat growth

### LAST CALL

trend with decreasing perspective but still having business potential

## TREND MAGNITUDE



### MANIFEST

AN ICONIC PRODUCT THAT IS A STABLE TREND OF LARGE MAGNITUDE WITH CONFIRMED COMMERCIAL SUCCESS



### INVEST

A CORE PRODUCT REPRESENTING A STEADILY GROWING TREND OF MODERATE MAGNITUDE WITH COMMERCIAL POTENTIAL



### TEST

A STATEMENT PRODUCT WITH GROWING PERSPECTIVE BUT SMALLER MAGNITUDE AND HIGHER RISK



## DATA TO DRIVE

01 CREATIVITY

02 STRATEGY

03 SUSTAINABILITY



LIVETREND

# THANK YOU!

You may not copy, reproduce, distribute, publish, display, perform, modify, create derivative works, transmit, or in any way exploit any such content, nor may you distribute any part of this content over any network, sell or offer it for sale, or use such content to construct any kind of database. You may not alter or remove any copyright or other notice from copies of the content on any Livetrend report.

**If you have further needs, please contact us via chat.**