



**MENSWEAR  
FORECAST**  
FALL/WINTER  
25/26  
**MACROTRENDS**



LIVETREND

# MACROTRENDS FW25/26 INTRODUCTION



LIVETREND AI.png



LIVETREND AI.png



LIVETREND AI.png



LIVETREND AI.png



## FORECAST

### FW25/26: ETHOS OF EMPATHY

Amidst the haze of uncertainty and the weariness of crisis, the year 2026 ushers in a glimmer of hope. Fueled by the potent forces of creativity, escapism, and profound awe, a collective yearning for positive change takes root within us. By embracing our full spectrum of emotions, we transcend the confines of toxic positivity, embracing vulnerability as a catalyst for growth. Based on new principles, we empower ourselves to make more informed decisions, choosing wisely what to engage with and how to invest our time and resources. Through radical kindness and compassion, we pave the way for a future, where every action is a testament to the transformative power of human connection

**Find trend's image gallery by clicking on the related button on each intro page.**

*This forecasting is based on a brainstorming of international Trend Experts, crossreferencing several LIVETREND data sources (Fashion shows, Instagram, E-commerce), analysing the visibility, the growth and the sale performance of the trends year on year.*



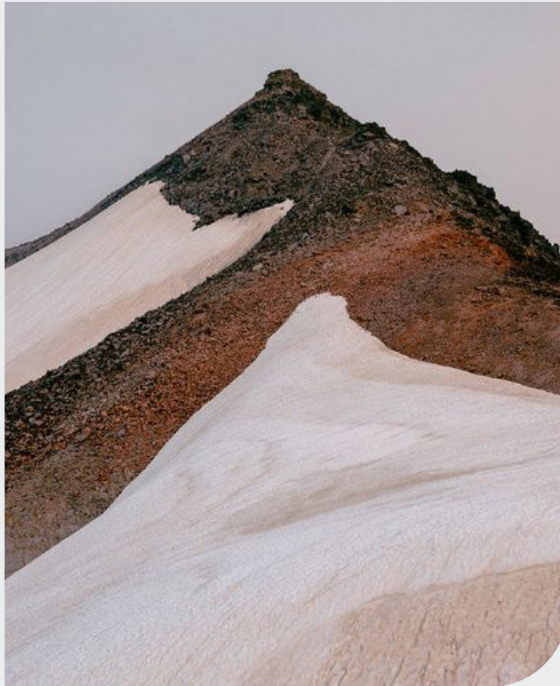
# TREND POETIC TRAVELER



@shangchengshi\_official 1.png



auralee



cody cobb.jpeg

## The Sober Consumer Shift

This trend encapsulates a mindset of pragmatism, intellect, and smart solutions. Rooted in a deep appreciation for functionality and efficiency, this trend embraces a poetic interpretation of the outdoors, infusing it with a serene and contemplative essence. The aesthetic reflects quiet utility and soft gorpcore.

Subtly tinted pastel hues infuse this trend's palette, imbuing it with a tranquil and tender ambiance. Gentle basics with a rather genderless appeal form the foundation of this trend, allowing for effortless mix-and-match versatility. Soft knit essentials crafted from mohair evoke comfort and warmth, while micro-texture materials and lightweight nylons create an even more poetic, less harsh outdoor look.

For the style, all-terrain capabilities ensure adaptability to diverse environments, while maintaining an aura of understated elegance. Soft puffer pieces seamlessly integrate into the silhouettes, offering warmth and a soft pneumatic look without overwhelming the senses. Workwear takes on a dreamy worn-out appearance, enhancing its functionality with a touch of nostalgia and charm. More sophisticated and understated utility finishings further enhance the aesthetic, marrying form and function with a chic allure.

At its core, the FW25/26 macro trend embodies a spirit of serene exploration, inviting to venture into the unknown with looks that resonate calm confidence and respectful grace towards the outdoors.

[ACCESS ALL IMAGES  
CLICKING HERE](#)



# MOOD POETIC TRAVELER



norse projects.jpeg



@ignant\_8.png



@shangchengshi\_official 5.png



tumblr.jpeg



auralee



freepeopleblog.jpeg



auralee4.png



FUCKINGYOUNG\_0449.jpg

GORPCORE +300%

CALM +750%

QUIET UTILITY - LOW TECH - GORPCORE - ESSENTIALS - WORKWEAR - TRANQUIL TREK



# COLOR PALETTE POETIC TRAVELER



Auralee \_19.jpg



Dries Van Noten



auralee12.png



auralee



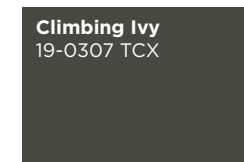
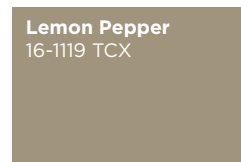
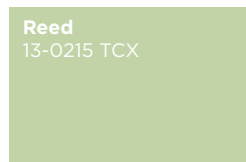
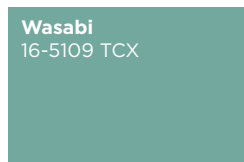
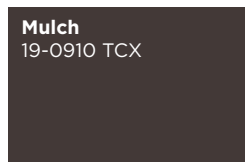
ignant\_\_\_\_.jpeg



claudehome3.png



@aleciountitled5.png



**Serene Exploration.** The Poetic Traveler color palette is an evocative blend of earthy and ethereal hues, designed to inspire wanderlust and creative exploration. Grounding the palette are khaki browns like Climbing Ivy and Mulch, reminiscent of rugged landscapes and natural beauty. These foundational tones invite a sense of adventure and connection to the earth. Vitalizing pastels such as Pastel Blue, Wasabi, and Reed add tranquility, evoking serene skies and verdant foliage. Subtly warmer neutrals like Fog and Lemon Pepper provide a comforting balance, offering warmth and stability. These neutrals evoke the coziness of quiet reflections. Adding depth and a hint of mystery, Deep Dive, a green-tinted blue, serves as an anchor. This harmonious blend is both dynamic and soothing, encouraging individuals to embark on a poetic journey of self-discovery, finding beauty and inspiration in every hue.



# COLOR HARMONIES **POETIC TRAVELLER**

## PALETTE 1

The color palette features a sophisticated blend of beige grays, dark black-brown, and vibrant wasabi green. Beige grays offer a timeless elegance, while dark black-brown adds depth and richness. Wasabi green injects a modern and energetic twist, creating a dynamic contrast. Together, these hues evoke a sense of sophistication and vitality, perfect for adding character and style to any design.



auralee12.png

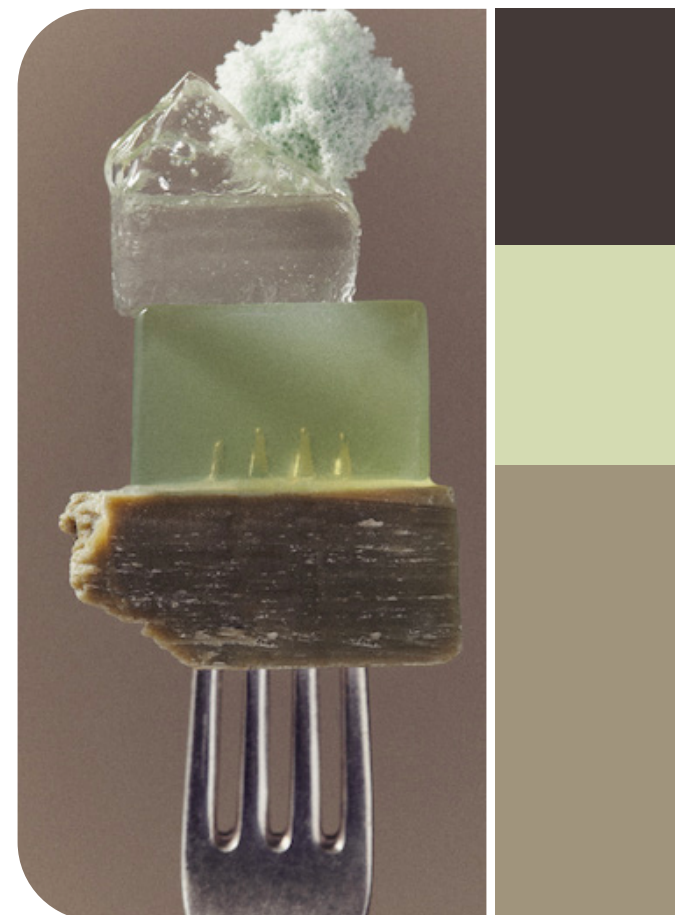
This color palette combines dark blue, light blue, grey beige, and dark brown, creating a harmonious blend of depth and tranquility. Dark blue provides sophistication and stability, while light blue introduces a calming and refreshing element. Grey beige adds a touch of neutrality, balancing the palette with subtle elegance. Dark brown grounds the colors with its rich, earthy tone, adding depth.

## PALETTE 2



auralee.png

## PALETTE 3



noceraferri.2.png

This color palette marries the understated charm of stone beige with the depth of dark black-brown, complemented by the gentle tranquility of sage pastel green. Stone beige lends a sense of warmth and sophistication, while dark black-brown adds a touch of richness and drama. Sage pastel green infuses the palette with a serene and refreshing vibe, creating a harmonious balance between earthy warmth and natural tranquility.

# KEY LOOKS **POETIC TRAVELER**



zegna3.png

**COZY MINIMALISM**



paul smith4.png

**SOFT WORKWEAR**



hermes4.png

**QUIET UTILITY**



sacai\_8.jpg

**LIGHT PERFORMERS**



Burberry-.jpg

**SOFT NOMADS**



# KEY LOOKS **POETIC TRAVELER**



White Mountaineering\_2.jpg

COZY MINIMALISM<<



auralee--3.jpg

SOFT WORKWEAR



hermes2.png

QUIET UTILITY



wansie

LIGHT PERFORMERS



Woolrich Black Label\_9.png

SOFT NOMADS



# KEY MATERIALS **POETIC TRAVELER**



zegna3.png

## BRUSHED YARN KNITS



@lowclassicseoul\_6.png



jil sander6.png

## POETIC WASHED-OUT



christian weijnants -7.png



Our Legacy\_22.png

## SUPERSOFT PNEUMATICS



bottega veneta



jil sander9.png

## A Realm of Soft Utility.

Here, practicality meets comfort in a harmonious blend of form and function. Hyper-soft mohair yarns offer a cocoon of natural warmth and unrivaled coziness, ensuring outdoor adventure with ease. Nostalgic charm whispers through workwear and denim bears the poetic marks of time with worn and washed effects. Each tender fade carries a story, creating subtle gradients and monochromatic plays of color. For snowy excursions, a soft wadded look takes precedence and is embracing sophisticated simplicity. This material is offering a pared-back elegance that effortlessly merges with the tranquil beauty of winter landscapes and is embracing sophisticated simplicity.



# KEY ELEMENTS POETIC TRAVELER



armani8.png

## TENDER BUTTON-UP



@recto -7.png



jw anderson

## HYBRID LAYERING



zegna6.png



andersson bell

## LIGHTWEIGHT UTILITY



andersson bell



jil sander7.png

## Practical Harmonies.

In the world of soft utility, the details whisper of comfort and functionality. Genderless and softly layered button-up basics form the foundation of this aesthetic, inviting a versatile wardrobe that transcends boundaries. Soft layering of outerwear elements takes center stage, allowing to effortlessly mix and match elements while playing with the dreamy color palette that characterizes this aesthetic. Each layer adds depth and texture here. But functionality doesn't take a backseat. Performance features are seamlessly integrated in lightweight solutions with a clean aesthetic. Spacious multipockets are designed to serve a purpose, but blending practicality with elegance in perfect harmony.



# KEY ACCESSORIES **POETIC TRAVELER**



sacai\_7.jpg

## SOFT MULTIPOCKET



sacai\_-1.jpg



dior-.jpg

## TENDER SNOW BOOTS



Rhude



burberry\_3.png

## CHIC MOUNTAIN SHOES



andersson bell



bluemarble

### **All-terrain tenderness.**

Soft multi-pocket bags crafted from nylon offer a companion for serene explorations, their versatile design catering to the needs of modern adventurers. Inspired by the snug embrace of UGGs, tender snow boots envelop feet in warmth and comfort, their minimal volumes exuding a cozy allure that beckons to chilly landscapes. Chic mountain shoes elevate gorpcore pieces with a luxurious touch, blending rugged functionality with refined sophistication. Whether navigating snow-covered peaks or strolling through urban landscapes, these pieces seamlessly transition between environments, embracing the duality of modern adventure and timeless style.



# AI INTERPRETATIONS **POETIC TRAVELER**

UTILITY

PASTEL HUES

SOFT

OUTDOORS

LAYERING



SOFT OUTDOORS



QUIET UTILITY



SMOOTH LAYERS





# TREND **ADVANCED UNIFORM**



Auralee\_2.jpg



FUCKINGYOUNG\_2686.jpg



claudehome4.png

## **The Sober Consumer Shift**

This macrotrend embodies a visionary mindset, characterized by intelligence, adaptability, and forward-thinking. Rooted in corporate minimalism, this trend presents a future business look that reworks pieces with a fresh perspective. The aesthetic is both essential and refined, embracing simplified lines and sleek design elements that create almost clinical silhouettes with futuristic notions. At its core, this trend celebrates innovation and timelessness, seamlessly integrating tech elements into office wear to create a harmonious fusion of form and function. Each piece exudes a sense of understated casual elegance, with a focus on clean silhouettes and versatile styling.

Bold color highlights punctuate the minimalist and sleek look, adding vibrancy and energy to the ensemble. Here monochrome silhouettes can be disrupted or new color-block can be explored. Sharp contours define each piece, contributing to the overall sense of precision and sophistication of the style. Embracing the mantra of „less is more,“ this trend prioritizes essential pieces that are both versatile and impactful, allowing for effortless integration into various wardrobes. The result is a more modernized, revisited corporate look that offers a seamless transition from the office to any other setting.

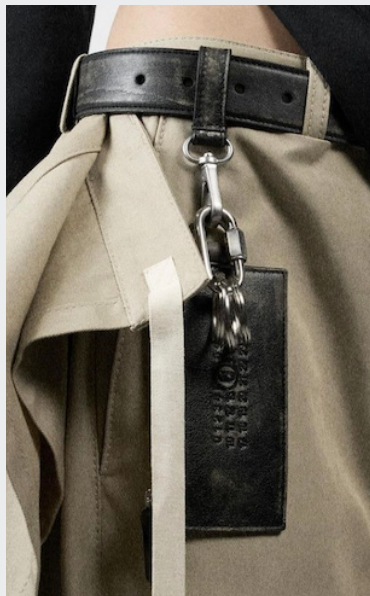
**ACCESS ALL IMAGES  
CLICKING HERE**



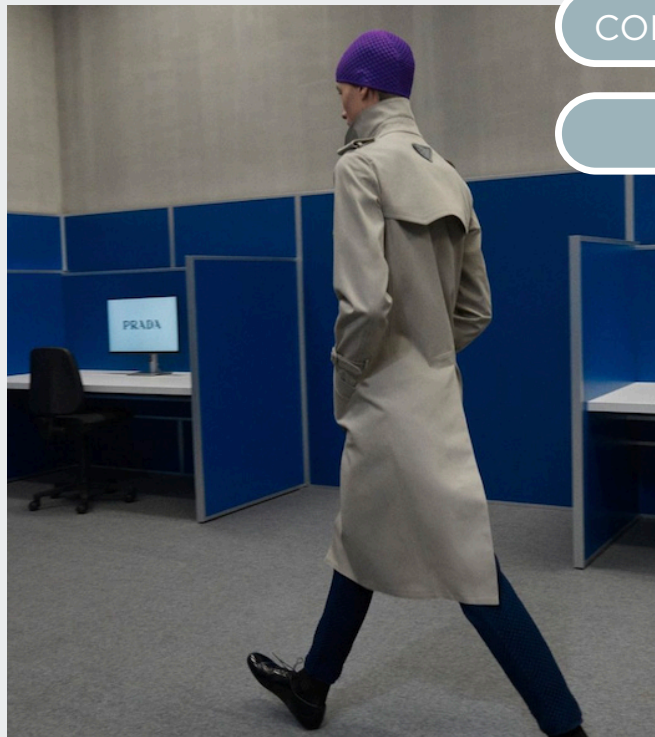
# MOOD **ADVANCED UNIFORM**



prada



margiela8.png



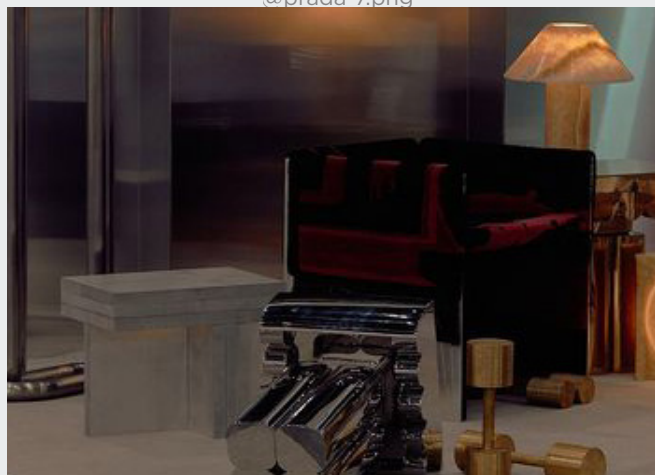
@prada-7.png



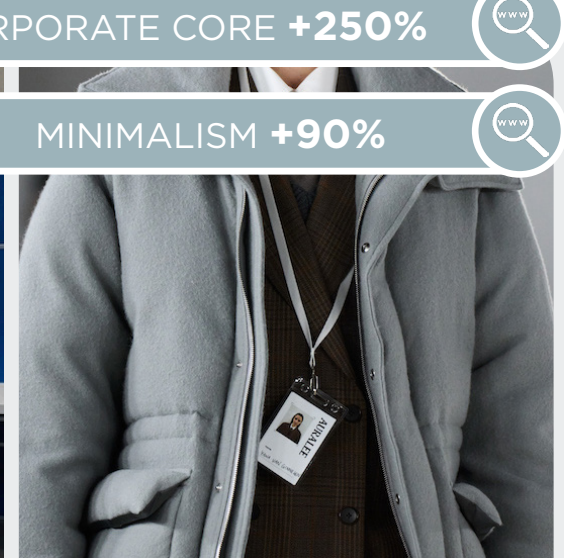
designmilk6.jpeg



john lawrence sullivan\_4.jpg



sightunseen.jpeg



Auralee\_4.jpg



federico cina2.png

CORPORATE CORE **+250%**

MINIMALISM **+90%**

CORPORATE MINIMALISM - CLINICAL - SIMPLIFIED LINES - DAILY TECH - FUTURE



# COLOR PALETTE **ADVANCED UNIFORM**



phoca tumb.jpeg



@ln-cc3.png



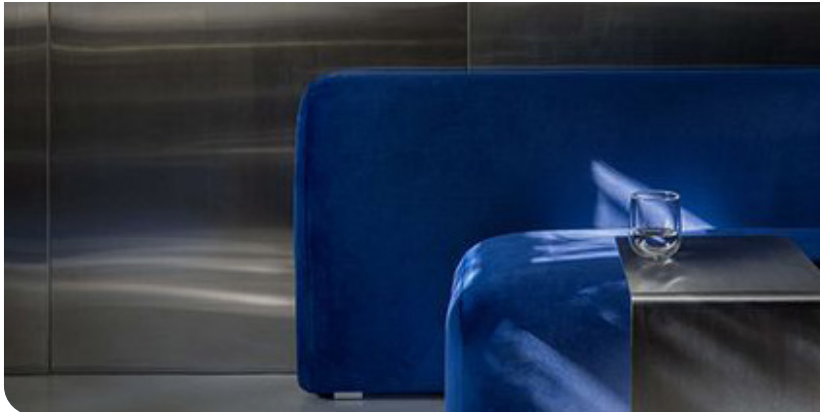
valentino22.jpg



@prada-5.png



bottega veneta



behance.jpeg



prada.webp

**Purple Opulence**  
18-3840 TCX

**Windsor Wine**  
19-1528 TCX

**Bellwether Blue**  
19-3943 TCX

**Dresden Blue**  
17-4433 TCX

**Savvy Red**  
19-1554 TCX

**Lemon Pepper**  
16-1119 TCX

**Lead**  
17-4408 TCX

**Smoke**  
14-4505 TCX

**Sophisticated Innovators.** The Advanced Uniform trend color palette combines sophistication with bold statements, creating a harmonious blend that is both modern and timeless. Cold greys like Smoke and Lead lay a sleek, neutral foundation, evoking a sense of calm and precision. Impactful blues such as Dresden Blue and Bellwether Blue inject a striking intensity, reminiscent of the digital age and innovative thinking. Jewel-toned accents in Purple Opulence and Windsor Wine add a layer of luxury and depth, elevating the palette with their rich, regal presence. Lemon Pepper, a refined grey-beige, offers a versatile, balancing hue that complements the more vibrant colors. Finally, Savvy Red brings a bold, classic touch, infusing the palette with energy and confidence. Together, these colors create a sophisticated and dynamic effect, perfect for modern, forward-thinking designs that exude both elegance and boldness.



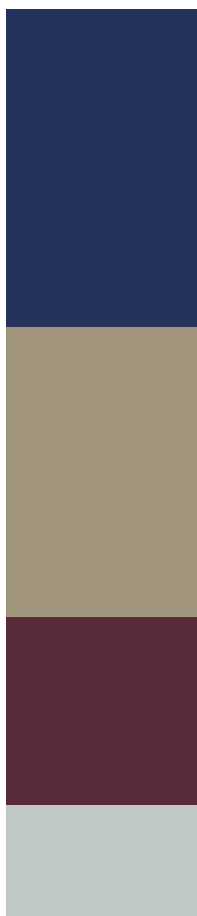
# COLOR HARMONIES **ADVANCED UNIFORM**

## PALETTE 1



@givenchy10.png

This color palette merges timeless sophistication with modern charm, featuring a rich navy blue that exudes strength and elegance. Beige adds a touch of warmth and versatility, while burgundy infuses a sense of luxury and depth. Light grey provides a soft, neutral backdrop, balancing the palette with a subtle yet refined contrast. Together, these hues feel classic and contemporary.



This color palette blends the classic sophistication of navy blue with the bold vibrancy of cyan, softened by the neutrality of beige and grounded by the depth of black. The combination creates a dynamic and versatile effect, offering both timeless elegance and modern flair. Navy blue exudes a sense of tradition and authority, while bold cyan adds a refreshing pop of color.

## PALETTE 2



miumiu4.jpg

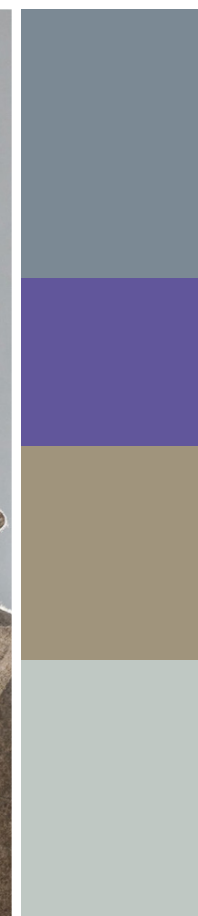


## PALETTE 3



Auralee \_3.jpg

This color palette balances the subtle warmth of stone beige with the cool neutrality of grey, while adding a bold splash of purple for vibrancy. Stone beige provides a comforting foundation, evoking a sense of tranquility and earthiness, while grey adds sophistication and versatility. The bold purple accent infuses the palette with energy and personality, creating a striking contrast and adding a touch of drama to any design.





# KEY LOOKS **ADVANCED UNIFORM**



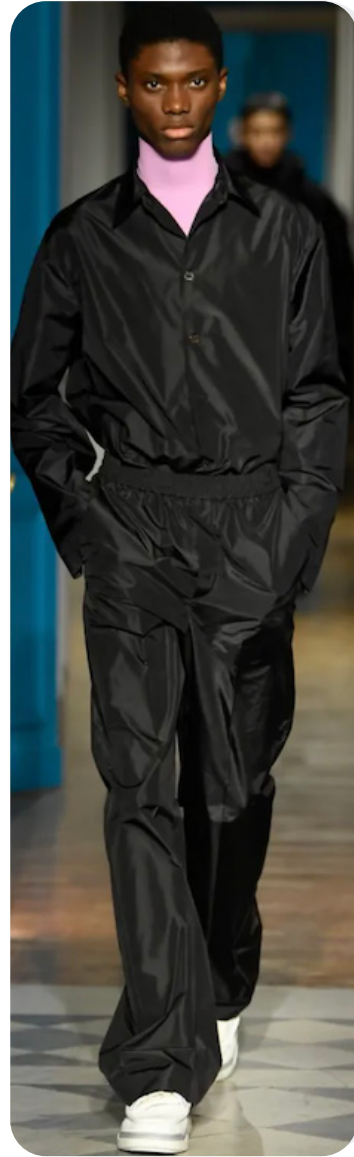
loewe.JPG

**YUPPIE SUITS**



prada8.png

**CORPORATE CLEAN**



valentino4.png

**CRISP SPORT**



margiela9.png

**CAUSAL MINIMALISM**



Valentino\_3.jpg

**REWORKED BASICS**

# KEY LOOKS **ADVANCED UNIFORM**



jil sander4.png

**YUPPIE SUITS**



Fendi\_12.jpg

**CORPORATE CLEAN**



botter3.png

**CRISP SPORT**



ami3.png

**CASUAL MINIMALISM**



fendi

**REWORKED BASICS**



# KEY MATERIALS **ADVANCED UNIFORM**

## CHIC PERFORMERS



federico cina2.png



louis gabriel nouchi

## LUXE MATTE LEATHERS



fendi5.png



gucci

## ESSENTIALS 2.0: HEAVY JERSEYS



Valentino\_1.png



gucci

### **Confident Modernity.**

Chic performance nylons offer a sleek aesthetic, marrying style with functionality for the modern active individual. Essentials 2.0 introduce heavier jerseys, elevating sartorial hoodies and other basics to new heights of comfort and versatility. Luxe matte leathers add a touch of sophistication to casual attire, blurring the lines between high fashion and everyday wear. These materials not only evoke a sense of luxury but also serve as a canvas for exploring innovative product categories, pushing boundaries and redefining traditional notions of fashion. These new textures and materials create a dynamic range of possibilities for the contemporary wardrobe, seamlessly transitioning from day to night with effortless style.

Our Legacy\_12.png



# KEY ELEMENTS **ADVANCED UNIFORM**



Prada-3.jpg

## COLOR POP FEATURES



marine serre1.png



valentino1.png

## TWO IN ONE



fendi10.png



zegna\_1.jpg

## TROMPE L'OEUIL LAYERING



sean-suen-.jpg



prada8.png

## **An impactful presence.**

Monochrome silhouettes are commanding attention with their sleek simplicity. Yet, amidst the sea of uniformity, a bold pop of color emerges as a striking contrast piece, injecting vibrancy into the ensemble. Optical layering techniques play with perception, creating illusion hems that add depth and intrigue to the look. These subtle manipulations of line and form draw the eye, inviting closer inspection and appreciation of the meticulous seamlessly twists more than basic pieces like shirts and tanks to create dynamic outfits. This fusion of functionality and style allows to experiment with different combinations and configurations. In a world of monochrome mastery, every detail is carefully curated to captivate and inspire.



# KEY ACCESSORIES **ADVANCED UNIFORM**



valentino19.jpg

## FUTURE REMIX RUNNER



namesake



fendi

## SLEEK SQUARE BOOTS



Federico Cina\_7.png



gmbh-.jpg

## CLINICAL BOXY



Auralee \_13.jpg



dior

### **Sharp Futurism.**

Future remix runners redefine athletic footwear, blending cutting-edge technology with futuristic design elements for unparalleled style and performance. These sneakers embody a dynamic fusion of innovation and fashion-forward aesthetics. Clinical boxy leather bags exude modern minimalism with structured silhouettes and clean lines. Designed for functionality and sophistication, these bags are the epitome of sleek utility, offering space for essentials while making a statement. Sleek squared boots epitomize contemporary elegance, featuring sharp angles that add a touch of edgy refinement. With their minimalist yet striking design, they elevate both casual and formal ensembles in any modern wardrobe.



# AI INTERPRETATIONS **ADVANCED UNIFORM**

POP OF COLOR

CORPORATE

MINIMAL

SLEEK

GENDERLESS



CHIC BASICS



TAILORED SPORT



SLEEK MINIMAL





# TREND AVANT-GARDE CLASSICS



gucci6.jpg



amiri



areaandbe.jpeg

## The Divergent Consumer Shift

This macrotrend takes a bold and innovative approach to chic wardrobes, characterized by the vibe of a rebellious retro mademoiselle with the mindset of subverting traditional codes. It embraces inclusive exclusivity, offering a fresh perspective on fashion that is daring and individual. Drawing inspiration from mod styles of the past, this trend finds the perfect balance between youth and sophistication, creating a dynamic and chic aesthetic that is both dramatic and playful.

Each piece is elevated to new heights, exuding confidence and a subtly rebellious youthfulness. The focus on dress and skirt silhouettes includes a-lines and minimal pencils, enhancing the sophisticated feminine notion. Cheeky cheetah prints or dots and playful embellishments adorn the garments, injecting a sense of whimsy and fun into the overall look.

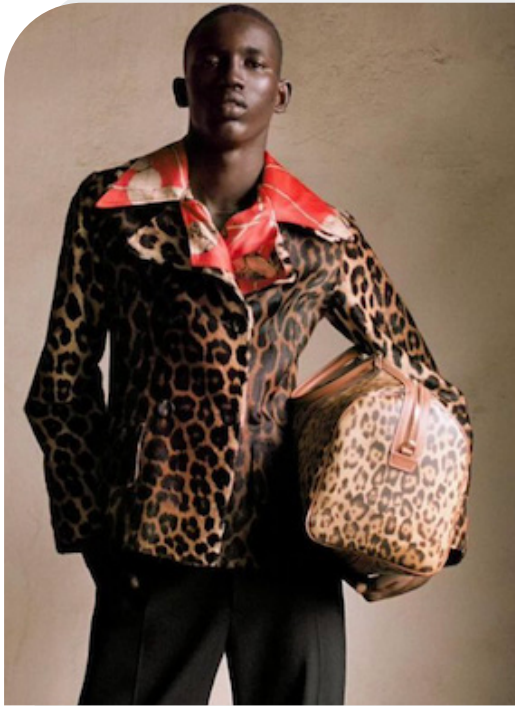
Despite its rebellious edge, there's a ladylike undertone woven throughout, celebrating luxury and opulence. Woolen and slinky fabrics collide, creating a tactile experience that is both rich and luxurious. The look exudes a warming retro notion that provides us with familiarity and dares us to think outside the box.

Overall, this trend represents a break from the ordinary, offering a fresh and exciting take that is set to stand out and inspire confidence. It's a celebration of self-expression and the joy of playing dress-up, integrating notions of maximalism into a currently dominating minimal language of style.

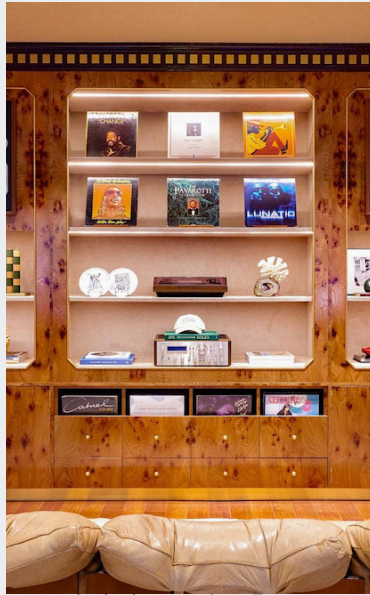
[ACCESS ALL IMAGES  
CLICKING HERE](#)



# MOOD AVANT-GARDE CLASSICS



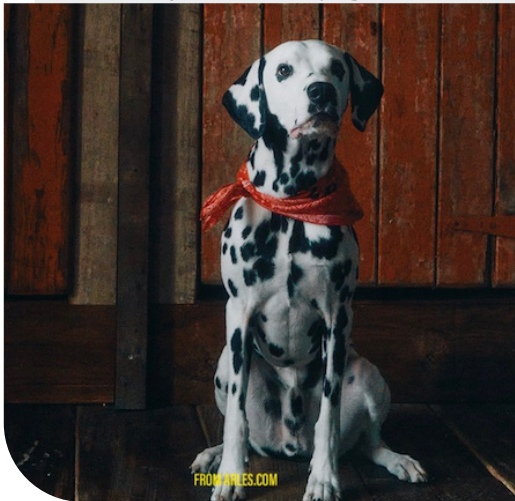
jbtalbourdet1.png



droledemonieur5.png



LUFON\_2024aw\_012.jpg



@ arles.official1.png



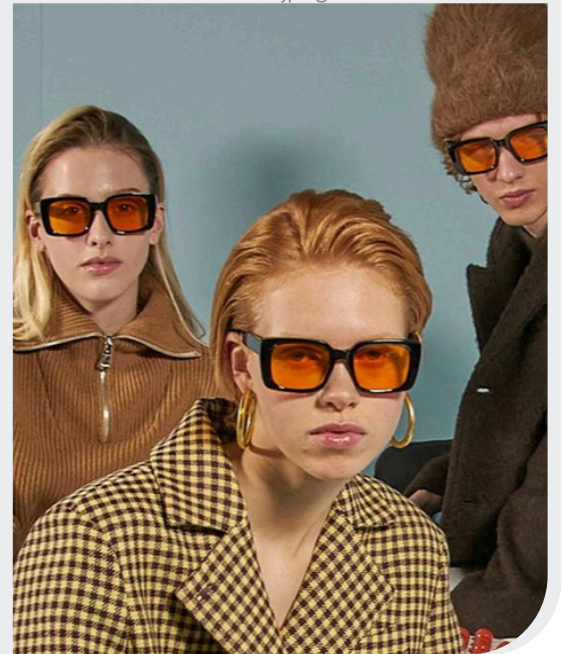
amiri-.jpg



droledemonieur--9.png



twitter.jpeg



philippe model8.png

OLD MONEY +500%

RETRO +160%

MODS - ELEGANCE - STATUS - CONFIDENCE - RETRO CLUB - LUXURIOUS - SOCIAL CIRCLE



# COLOR PALETTE AVANT-GARDE CLASSICS



amiri-m-clp-f24-002.jpg



droledemonieur6.png



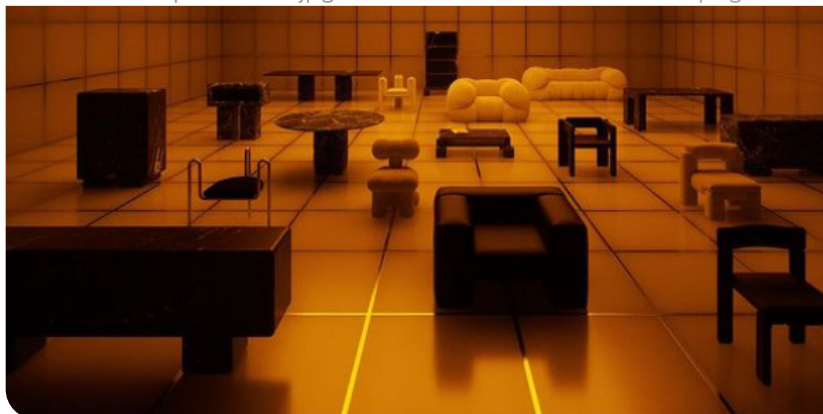
msgm.jpg



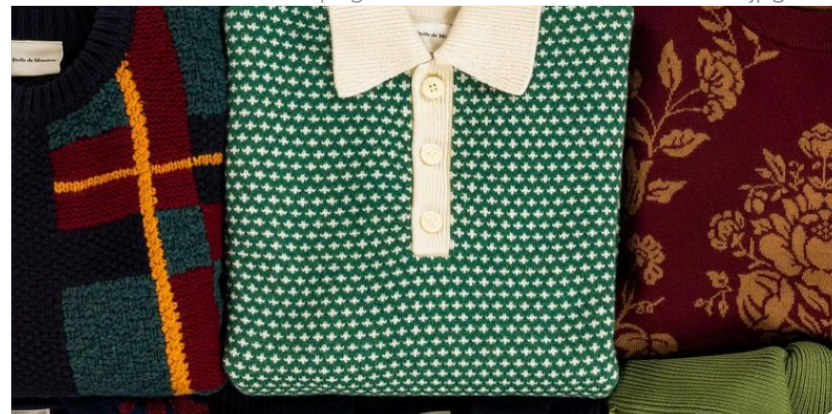
droledemonieur--7.png



amiri-m-bks-f24-102.jpg



@booneditions8.png



droledemonieur--1.png

**Savvy Red**  
19-1554 TCX

**Dresden Blue**  
17-4433 TCX

**Mandarin Red**  
17-1562 TCX

**Downtown Brown**  
19-1223 TCX

**Spruced-Up**  
19-4918 TCX

**Misty Jade**  
13-6008 TCX

**Gold Flame**  
16-1449 TCX

**Clay**  
15-1231 TCX

**Captivating Modernity.** The Avant-Garde Classics trend color palette is a bold fusion of nostalgic warmth and modern vibrancy, creating a dynamic and sophisticated effect. Anchored by the warm orange retro shade Gold Flame and complemented by a soft, warm Beige, the palette evokes a sense of vintage charm and timeless elegance. Deep, rich dark brown adds depth and grounding, enhancing the overall sophistication. Retro cyan-like Dresden Blue introduces a touch of cool, classic appeal, while turquoise hues in Spruced-Up and Misty Jade bring a refreshing, contemporary twist. The palette is further enlivened by the savvy, bold red and the vibrant coral shade Mandarin Red, adding energetic pops of color that invigorate the composition. Together, these hues create a harmonious blend of past and present, perfect for those seeking to make a statement with a refined yet adventurous aesthetic. This palette invites a playful exploration of color, blending tradition with innovation for a truly avant-garde expression.



# COLOR HARMONIES **AVANT-GARDE CLASSICS**

## PALETTE 1



droledemonsieur1.png

This color palette combines the warmth of cognac brown with the depth of dark turquoise, accented by the freshness of mint green. Cognac brown exudes richness and sophistication, while dark turquoise adds a sense of depth and intrigue. Mint green brings a refreshing and vibrant touch, balancing the palette with a hint of modernity and vitality. These hues create a harmonious and dynamic effect, for a chic retro look.

The color palette features warm browns, beige, cognac, and cyan-like blue, blending to create a modern retro vibe. Warm browns feel comforting, while beige offers understated elegance. Cognac adds even more richness and sophistication, elevating the palette with its luxurious hue. Cyan-like blue introduces a modern contrast, infusing a bold essence. Together, these colors evoke sophistication and stylish allure.

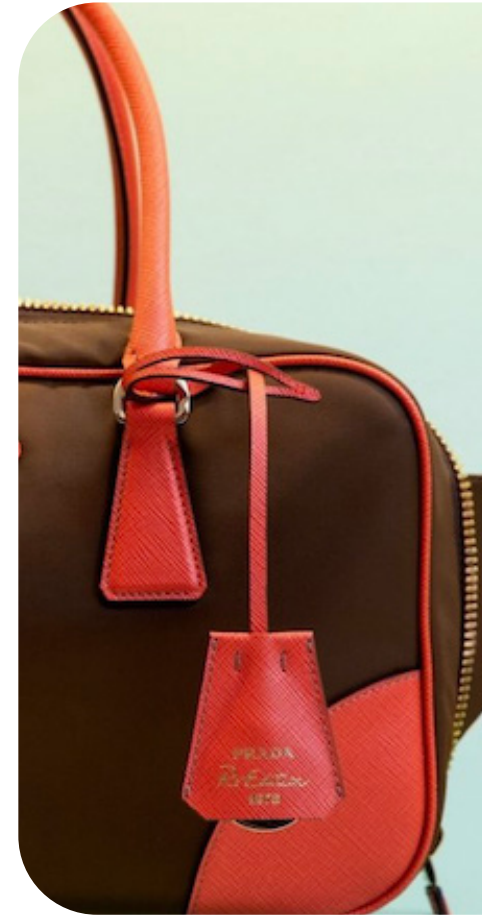
## PALETTE 2



effusion art gallery.jpeg



## PALETTE 3



@prada-8.png

The color palette blends coral red, mint pastel green, and deep brown, creating a captivating effect. Coral red injects vibrancy and energy, evoking a sense of flirty passion. Mint adds a refreshing and balancing element. Deep brown provides depth and richness to the mix. Together, these colors create a harmonious and dynamic palette that is both bold and calming, perfect for creating a stylish look with a hint of sophistication.



# KEY LOOKS **AVANT-GARDE CLASSICS**



Drole de Monsieur

**MAXIMAL MOB**



Prada-7.jpg

**VINTAGE UNIFORM**



gucci7.jpg

**QUIRKY MINIMAL**



Drole de Monsieur

**FANCY GENTS**



bluemarble4.jpg

**REBEL DANDY**



# KEY LOOKS **AVANT-GARDE CLASSICS**



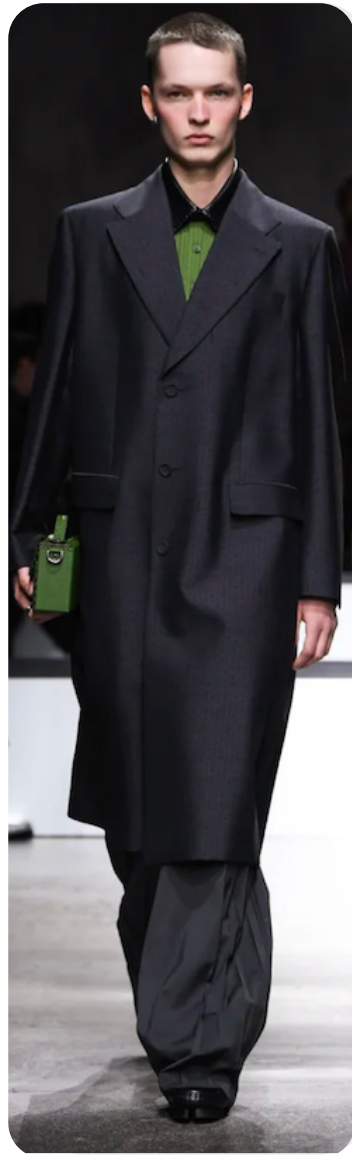
Drole de Monsieur

**MAXIMAL MOB**



kenzo-.jpg

**VINTAGE UNIFORM**



fendi4.png

**QUIRKY MINIMAL**



amiri8.jpg

**FANCY GENTS**



MSGM\_4.jpg

**REBEL DANDY**

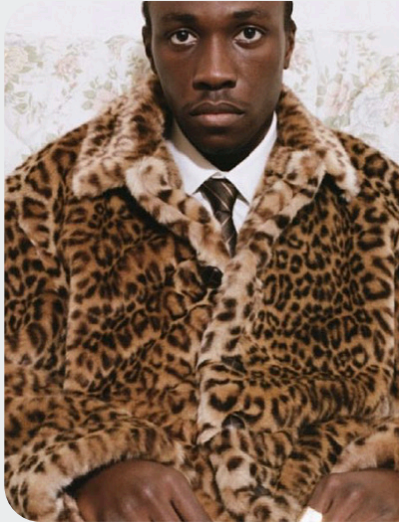


# KEY MATERIALS **AVANT-GARDE CLASSICS**



ernestwbaker1.png

## QUIRY LEOPARDS



ernestwbaker6.png



jbtalbourdet1.png

## FANCY FOULARDS



Drole de Monsieur



EgonLab\_1.jpg

## CHIC TWEEDS



Dsquared2\_18.png



sacai-.jpg

## Rebellious meets timeless.

Quirky leopard prints add a bold and playful touch to contemporary menswear, injecting outfits with a sense of individuality. Meanwhile, fancy yarn tweeds redefine traditional menswear, infusing classic silhouettes with modern sophistication and texture. These tactile fabrics elevate the aesthetic, offering a luxurious twist to everyday ensembles. Additionally, fancy foulard prints bring a sense of opulence and refinement to menswear, with intricate patterns and rich colors creating a striking visual impact. Together, these elements push the boundaries of conventional menswear, encouraging experimentation and self-expression. From the whimsical allure of leopard prints to the timeless elegance, new men will make statements.



# KEY ELEMENTS **AVANT-GARDE CLASSICS**



amiri11.jpg

## RETRO 70s SHIRT COLLARS



winnie-.jpg



amiri

## FANCY ROUND NECKS



wooyoungmi-.jpg



gucci.jpg

## MILITARY BUTTONS



Prada-7.jpg



ernestwbaker1.png

## Dipped in Nostalgia.

Retro 70s shirt collars make a bold comeback, infusing outfits with a nostalgic charm that harkens back to an era of groovy style. Round neck jackets add a touch of dainty masculinity, balancing softness with structure for a contemporary twist on classic menswear. Military buttons embellish garments with chic elegance, evoking a sense of sophistication and authority. Together, these elements create a harmonious fusion of retro inspiration and modern sensibility, offering wearers a versatile wardrobe that seamlessly transitions between casual and formal occasions. Whether paired with jeans for a laid-back vibe or tailored trousers for a polished look, this ensemble exudes timeless appeal with a hint of retro flair.



# KEY ACCESSORIES **AVANT-GARDE CLASSICS**



amiri10.jpg

## 'OLD MONEY' LEATHER WEEKENDER



rhude-.jpg



jbtalbourdet1.png

## SLIM DANDY DERBIES



prada-.jpg



lgn-.jpg

## RETRURN OF CREEPERS



gucci



valentino-.jpg

## Old-world Glamour.

Old-money inspired leather weekender bags exude timeless elegance and sophistication, embodying the refined tastes of aristocratic heritage. Creeper shoes make a bold statement with their chunky soles and rebellious edge, adding a touch of attitude to any ensemble. Slim lace-up derby shoes, available in dandy polished leather options, offer a sleek and sophisticated choice for the new gentleman. Each piece speaks to a bygone era of luxury and refinement, evoking images of exclusive social circles. Whether jet-setting with a luxurious weekender bag or stepping out in sleek derby shoes, these items exude an air of effortless style and understated wealth, a new essential for modern sophisticates.





# AI INTERPRETATIONS **AVANT-GARDE CLASSICS**

CLASSIC

LADY-LIKE

CHIC

FEMININE

COLOR-BLOCK



MILITARY CHIC



QUIRKY GENT



REWORKED 70s





# TREND **PLAYFUL HOMAGE**



andersson bell4.png



taking shelter fucking young.jpeg



@thibautmathieuad1.png

## **The Divergent Consumer Shift**

The trend encapsulates a mindset of youthful rebellion and singularity, where individuality reigns supreme. It's a celebration of unapologetic self-expression and the journey of growing up and (re-)defining oneself, drawing inspiration from an past, present and future. An eccentric weekend at a highland estate becomes the backdrop to combine elements of tradition with a playful twist, creating a mix-and-match playground of nostalgia and whimsy.

At its core, the aesthetic embraces personal style and celebrates the joy of fashion experimentation. Grandpa's masculine vintage pieces, hunting gear, more romantic feminine fashion, and intimate nightwear collide into a bold patchwork of style and decades. Heritage knits and tweeds are revived, blending seamlessly with old-money prep and chic, slightly rebellious undone spirit or eccentric glitz.

Each piece tells a story of authenticity and creativity. This trend is an ode to individuality, inviting bolder notions after seasons of quietude, and encouraging the expression of multifaceted characters through fashion.

**ACCESS ALL IMAGES  
CLICKING HERE**



# MOOD PLAYFUL HOMAGE



adonis project.jpeg



labour.jpeg



@selfservicemagazine4.png



@noahclothing2.png



Fendi\_5.jpg



thepatterncurator.jpeg

GRANDPACORE +350%

MAXIMALISM +200%



jbtalbourdet4.png



@endclothing3.png

MANOR-BORN - NOSTALGIA - MASC/FEM - ECLECTIC - INDIVIDUAL - PREPPY - CABIN



# COLOR PALETTE **PLAYFUL HOMAGE**



modedamour.jpeg



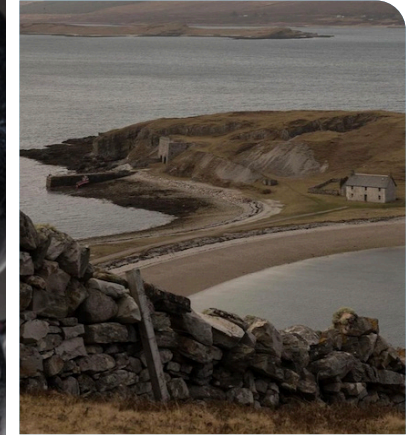
droledemonsieur.webp



Fendi\_6.jpg



@hi.suzanne4.png



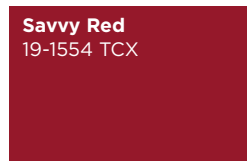
@ignant\_2.png



sophiahisn2.jpg



@Vogue.Polska2.png



**Savvy Red**  
19-1554 TCX



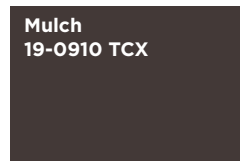
**Golden Flame**  
16-1449 TCX



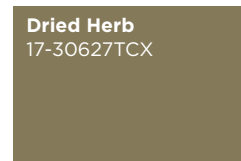
**Reed**  
13-0215 TCX



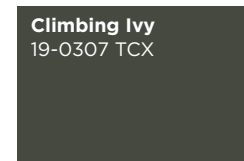
**Windsor Wine**  
19-1528 TCX



**Mulch**  
19-0910 TCX



**Dried Herb**  
17-30627TCX



**Climbing Ivy**  
19-0307 TCX



**Bellwether Blue**  
19-3943 TCX

**Homage to the past.** The Playful Homage trend color palette is a sophisticated fusion of highland neutrals and vibrant hues, creating an atmosphere of refined elegance and playful charm. Highland neutrals like Dried Herb and Climbing Ivy ground the palette with their earthy, organic tones, evoking a sense of natural tranquility and timeless beauty. Aristocratic Bellwether Blue adds a regal touch, infusing the palette with a sense of depth and sophistication. Pastel green Reed introduces a soft, refreshing element, reminiscent of serene landscapes and gentle breezes. Luxurious cognac Golden Flame brings warmth and richness, elevating the palette with its opulent hue. Savvy Red and Windsor Wine, classic red tints, inject a burst of energy and passion, enhancing the overall vibrancy. Together, these colors create a harmonious and dynamic palette that pays homage to tradition while embracing modernity, perfect for those who seek to express their unique style with confidence and elegance.



# COLOR HARMONIES **PLAYFUL HOMAGE**

## PALETTE 1



groenerleven.jpeg

This color palette embraces the warmth and richness of browns, rust, red, and burgundy, creating a captivating blend that exudes depth and sophistication. The earthy browns provide a grounding foundation, while rust and red infuse the palette with energy and vitality. Burgundy adds a touch of opulence and elegance, completing the ensemble with a sense of luxury for cozy, stylis looks.

## PALETTE 2



@charlottekrieger2.png

Muddy khakis blend with mint green and burgundy, creating a rich and earthy palette that exudes both depth and freshness. The khakis provide a sense of groundedness and warmth, while the mint green adds a refreshing and rejuvenating element. Burgundy injects a bold and sophisticated touch, offering a vibrant contrast to the muted tones. Together, these hues create a harmonious and versatile effect, perfect for adding depth and character to designs.

## PALETTE 3



@johannbesse16.png

This color palette marries the earthy allure of muddy olives with the refreshing vibrancy of mint green, all anchored by the bold presence of red. Muddy olives bring depth and groundedness to the palette, while mint green adds a breath of fresh air, infusing it with vitality and rejuvenation. Bold red injects a dynamic energy, creating a striking contrast and adding a sense of passion and intensity to the overall effect.



# KEY LOOKS **PLAYFUL HOMAGE**



marine serre4.png

**MASC/FEM MASH-UP**



botter4.png

**PREP BOY**



fendi15.png

**HUNTING CABIN**



andersson bell4.png

**CREATIVE BUCOLIC**



@aimeleondore3.png

**GRANDPACORE**



# KEY LOOKS **PLAYFUL HOMAGE**



dhruuv4.png

**MASC/FEM MASH-UP**



droledemonieur.webp

**PREP BOY**



Fendi\_5.jpg

**HUNTING CABIN**



andersson bell3.png

**CREATIVE BUCOLIC**

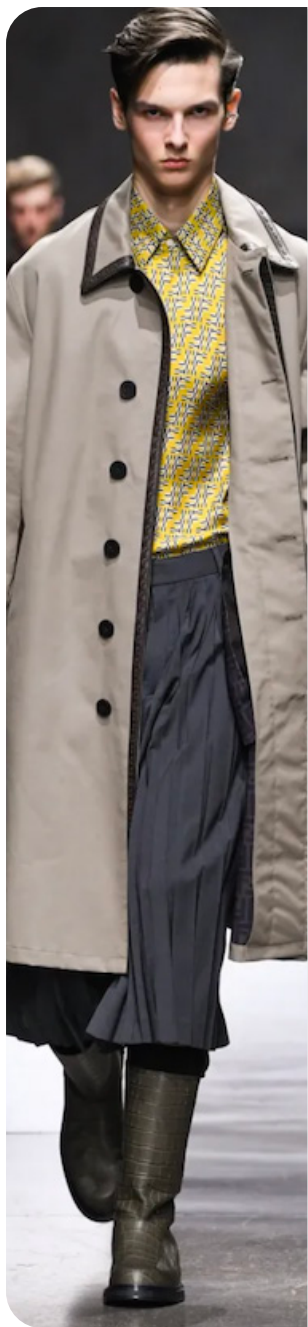


fendi\_2.jpg

**GRANDPACORE**



# KEY ELEMENTS **PLAYFUL HOMAGE**



fendi9.png

## HIGHLAND KNITS



Magliano.jpg



LOEWE\_43.jpg

## CURATED BOUQUETS FLORALS



@felipelancastre.jpeg



Vuitton\_24.png

## VELVETY SURFACES



wooyoungmi-1.jpg



fendi\_4.jpg

## **Genderless Tradition.**

Fair Isle and argyle knits dance with warmth and movement, their intricate patterns intertwining in a harmonious display of traditional craftsmanship. Velvet and corduroy add a touch of opulence and texture, lending depth to winter ensembles with their luxurious vintage feel. Meanwhile, curated bouquet prints and embroideries burst forth with delicate blooms, infusing outfits with a sense of whimsy and romance. These elements come together to create a tapestry of textures and motifs, where each piece tells a story of heritage and highlands. From cozy sweaters to sumptuous pants, this fusion of classic and contemporary styles invites wearers to embrace playfulness and sophistication.



# KEY ELEMENTS **PLAYFUL HOMAGE**



drole de monsieur

## CLASSIC POLO COLLARS



LOEWE\_39.jpg



fendi

## CONTRASTING CABIN COLLARS



fendi8.png



prada6.png

## HERITAGE PATCHWORKS



botter6.png



andersson bell2.png

## **Timelessness made Creative.**

Classic polo necklines meet an eclectic fusion, where mix-and-match patchwork textiles contrast florals and plaids. The timeless silhouette of the polo neck provides a backdrop for the elements that play with textures and patterns, proposing traditional elements or contemporary flair. Contrasting material collars add a touch of unexpected detail, creating a visual hunting or cabin look and take us to the highlands. The trend tells a story of creative juxtaposition, celebrating the art of pairing seemingly disparate elements into a harmonious whole. It's a testament to the versatility of style and the endless possibilities of self-expression, where every stitch and seam speaks about a new aesthetic sensibilities.



# KEY ACCESSORIES **PLAYFUL HOMAGE**



botter2.png

## HERITAGE (RIDING) BOOTS



barrett-.jpg



fendi.jpg

## CLASSIC CROSSBODY SADDLE BAGS

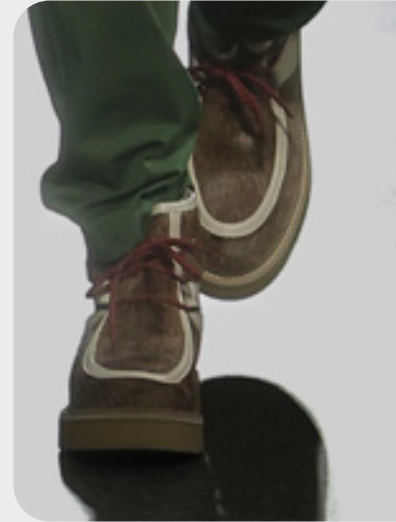


vuitton

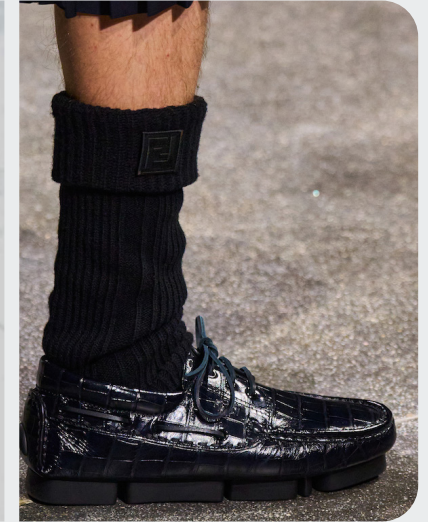


egonlab

## BUCOLIC APRON-TOE LEATHER SHOES



kenzo\_7.png



fendi-.jpg

## Reworked Heritage.

Heritage almost riding-style boots, some reaching knee-high, exude timeless elegance with their sturdy construction and equestrian-inspired details. Meanwhile, apron-toe leather and suede shoes offer a sophisticated alternative, blending classic charm with contemporary style. These shoes boast craftsmanship and versatility, making them a staple in any wardrobe. Completing the ensemble, classic crossbody saddle bags add a touch of heritage flair, with their structured silhouettes and practical designs. Whether for a day out in the city or a countryside retreat, these accessories effortlessly marry function with fashion, embodying the enduring appeal of timeless classics.



# AI INTERPRETATIONS **PLAYFUL HOMAGE**

PREPPY

HUNTING

CHIC

OLD MONEY

ARISTOCRATIC



FEM/MASC PREP



HUNTING CABIN



GRANDPACORE





# TREND MEDITATIVE ARTISANAL



sean-suen-m-f24-022-11214555.jpg



dior-m-bks-f24-138.jpg



beambk.jpeg

## The Sacred Consumer Shift

The macrotrend channels a mindset of restorative contemplation, drawing inspiration from austere ancestral traditions. Here, prevailing rigor and restraint are reviewed through more surreal lenses. It evokes a sense of reverence for past traditions while embracing the present moment with inner peace and mindfulness. The aesthetic narrative unfolds from monk to priestess, where simplicity and modesty intertwine with a sense of splendor.

Surreal modest dressing takes center stage. In black and whites, minimal monk-like silhouettes exude a sense of sacred elegance. While sacred nomads come in caped styles to add a touch of drama and mystique to the story. Heirloom additions of lace, openwork, or crafted knits and fringes add a touch of artisanal craftsmanship and heritage. Primal elements and ceremonial minimalism are underlining new looks and connect us to earth and spirituality.

Each piece exudes a sense of active zen, inviting wearers to find plenitude in movement and stillness alike. This trend puts a focus on artisanal craftsmanship and heritage, creating a sense of connection to our roots.

Overall, it offers a sanctuary in a fast-paced world, embracing the beauty of simplicity and finding solace in the timeless traditions of the past. It's a reminder to slow down, reflect, and find beauty in the quiet moments of life.

[ACCESS ALL IMAGES  
CLICKING HERE](#)



# MOOD **MEDITATIVE ARTISANAL**



WANSIE-TOKYO-AW-1.jpg



@thibautmathieuad6.png



jbtalbourdet23.png



@milkmagazine-8.png



dior-m-bks-f24-138.jpg



Grounds.jpg

HEIRLOOM **+400%**

SURREALISM **+40%**



ad5.png



moredecay5.png

AUSTERITY - SURREALISM - KNOW-HOW - CEREMONIAL - CALM PLENTITUDE - MODESTY



# COLOR PALETTE MEDITATIVE ARTISANAL



@bymarlenebirger-3.png



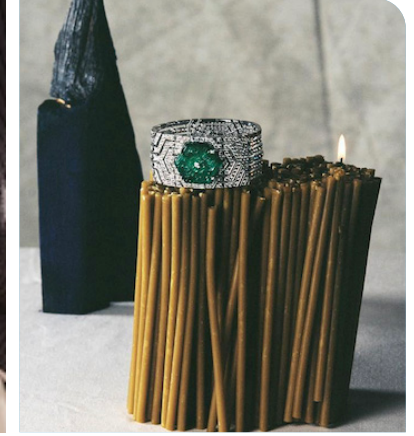
dior-m-bks-f24-006.jpg



zegna5.png



dries van noten-12.jpg



juliettezakowetz5.png



van-noten.jpg



katie stout5.png

**Cedar Wood**  
17-1525 TCX

**Misty Rose**  
15-1512TCX

**Antique Moss**  
16-0840 TCX

**Persimmon Orange**  
16-1356 TCX

**Mulch**  
19-0910 TCX

**Black Beauty**  
19-3911 TCX

**Taos Taupe**  
15-1119 TCX

**Windsor Wine**  
19-1528 TCX

**Calm & Focus.** The Meditative Artisanal palette weaves together a contemplative array of hues that evoke a sense of calm and refined craftsmanship. Blush neutrals like Cedar Wood and Misty Rose set a soothing foundation, offering a gentle warmth that feels nurturing. These soft shades are complemented by the almost black Darks of Windsor Wine and Mulch, adding depth and sophistication with their rich, moody tones. Black Beauty serves as a monastic minimal shade, bringing a grounding and stark simplicity that enhances the palette's meditative quality. The green hue in Antique Moss introduces a subtle connection to nature, evoking tranquility and growth, while Taos Taupe beige provides an earthy balance that underscores the artisanal theme. Persimmon orange, with its bright and spiritual essence, adds a vibrant touch, infusing the palette with a sense of enlightenment and creative energy. The blend promotes introspection and mindfulness and seeks to inspire calm, focus, and an appreciation for handcrafted elements



# COLOR HARMONIES **MEDITATIVE ARTISANAL**

## PALETTE 1

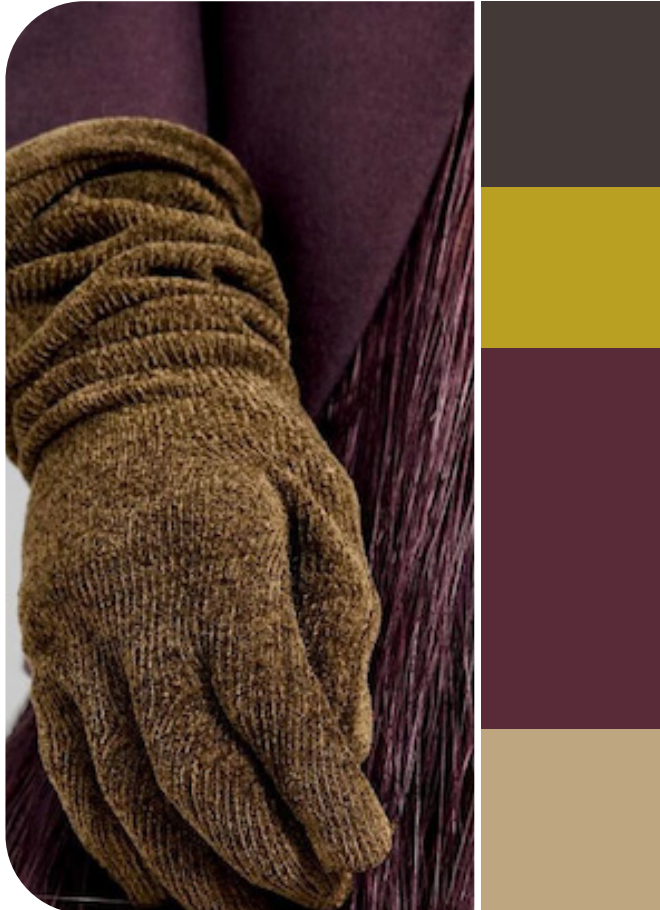


van-noten-m-clp-f24-061.jpg

The color palette blends bold orange, warm beige, and blush rose, creating a natural yet vibrant look. Orange injects energy and excitement, adding a pop of color that commands attention. Warm beige offers coziness and natural calmness. Blush rose adds a soft touch for softer elegance. Together, these colors create a balanced palette that is both bold and soothing, reflecting a journey of enlightenment.

This color palette blends warm, earthy tones with a pop of rich burgundy and muted lime, creating a sophisticated and inviting ambiance. Beige and brown provide a timeless base, offering warmth and versatility. Burgundy adds depth and elegance, infusing the palette with a touch of luxury. Muted lime brings a refreshing contrast, balancing the rich other hues for a refined and modern look.

## PALETTE 2



@givenchy9.png

## PALETTE 3



dior-m-bks-f24-138.jpg

This color palette exudes a luxurious and sophisticated vibe, blending classic neutrals with rich accents. Beige provides a timeless backdrop, while black-brown adds depth and drama. Burgundy infuses a sense of opulence and warmth, evoking images of sumptuous fabrics and regal elegance. Dusty coral rose offers a soft and romantic touch, adding a delicate pop of color to the palette. Together, these hues create a harmonious and captivating effect that is refined and modern.



# KEY LOOKS **MEDITATIVE ARTISANAL**



Lemaire\_7.png

**MONK MOMENTS**



fendi2.png

**MODEST MINIMAL**



dries van noten

**LUXE NOMAD**



givenchy.jpeg

**ARTISANAL**



wansie

**PRIM BUCOLIC**



# KEY LOOKS **MEDITATIVE ARTISANAL**



dries van noten-1.jpg

**MONK MOMENTS**



givenchy4.jpg

**MODEST MINIMAL**



ami4.png

**LUXE NOMAD**



gmbh1.png

**ARTISANAL**



givenchy10.jpg

**PRIM BUCOLIC**



# KEY ELEMENTS **MEDITATIVE ARTISANAL**

## RAW MOULINE KNITS



sean-suen.jpg



Altea\_1.png

## ARTSANAL (PIN)STRIPES



dior-m-bks-f24-138.jpg

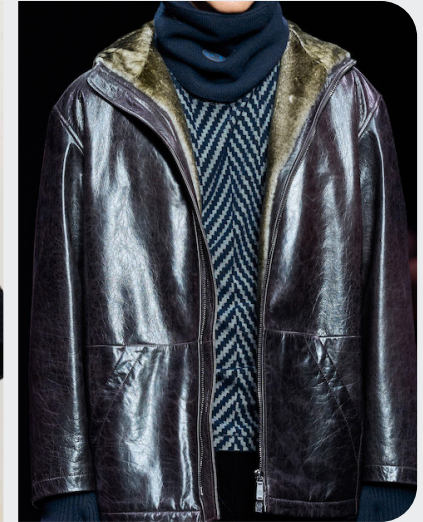


moredecay7.png

## AUSTERE DARK LEATHERS



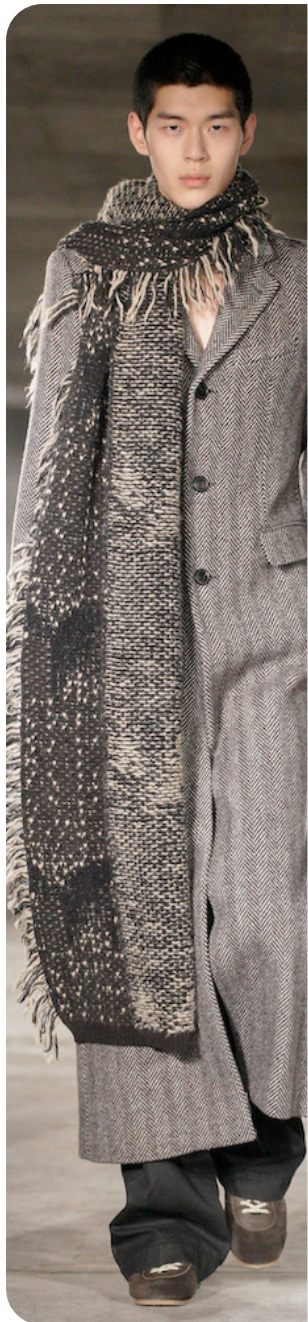
dries van noten-13.jpg



giorgio-armani-m-clp-f24-061.jpg

## Exploring Heritage.

Austere dark leathers command attention with their unyielding presence, casting an aura of modesty and sophistication. Authentic mouliné knits add tactile elements, weaving subtle patterns that add depth and intrigue to the heritage look. Fanciful and artisanal stripes dance across textiles, their whimsical charm infusing each garment with a sense of purposeful creativity. Together, these elements create a harmonious blend of heritage and reinvention, inviting wearers to embrace the complexity of time. Whether adorned in the rich textures sober simplicity, each piece becomes a canvas for self-expression and cultural exploration.



dries van noten-5.jpg



# KEY ELEMENTS **MEDITATIVE ARTISANAL**

## DRAPED & CAPED



givenchy



dries van noten-15.jpg

## MODEST NECKLINES



hermes10.png



givenchy2.jpg

## HAND-EMBROIDERED SYMBOLISM



vuitton



wansie

## **Sacred Wanderers.**

Draped and cape elements effortlessly infuse ensembles with a sense of monastic grace and nomadic fluidity. Modest high necklines exude an understated elegance, maintaining a sense of refinement. Symbolic handmade embroideries in thicker yarns adorn garments, weaving intricate tales of tradition and culture with every stitch. These embroidered motifs serve as visual poetry, speaking volumes about heritage and identity. Together, these design elements fuse sophistication and symbolism, inviting to embrace our roots while embracing contemporary style. Each garment becomes a testament to the craftsmanship and artistry that transcends time and trends.



officine generale4.png



# KEY ACCESSORIES **MEDITATIVE ARTISANAL**



givenchy8.jpg

## AUSTERE HAMMOCKS



valentino.jpg



officine generale

## MINIMAL HERITAGE FLATS



versace-.jpg



dior

## BUTTERY SECOND-SKIN SOCK BOOTS



Auralee \_17.jpg



van noten

## Ceremonial Minimalism.

Austere hammock bags appeal effortlessly, their clean lines and understated design offering a timeless elegance that resonates an almost ceremonial minimalism. Crafted from luxe leather, these bags exude sophistication while providing practicality for the modern minimalist. Butter-soft leather sock boots hug the foot with luxurious comfort, their sleek silhouette adding a touch of refinement to any outfit. Minimal heritage babouche flats evoke a sense of tradition and craftsmanship, their simple yet elegant design echoing the cultural roots of centuries past. These flats whisper of history, blending seamlessly with contemporary style for a look that is both classic and chic.



# AI INTERPRETATIONS **MEDITATIVE ARTISANAL**

MONASTIC

ARTISANAL

LUXURY

QUIET NOMAD

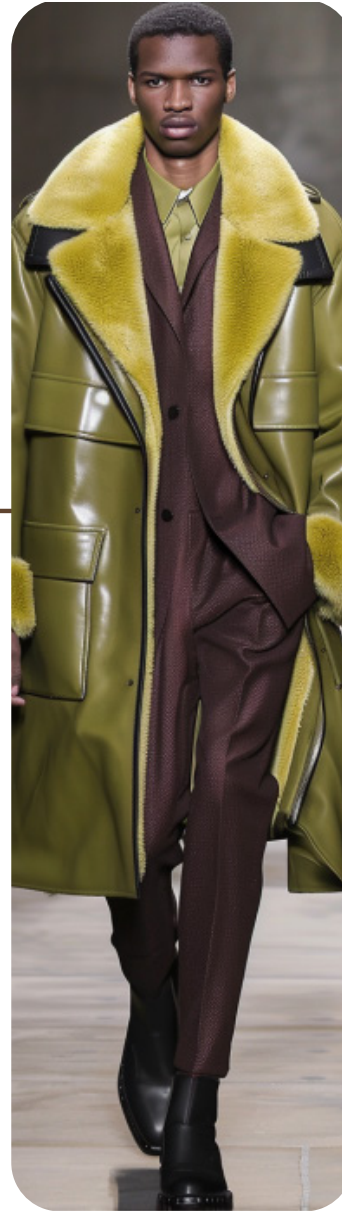
LAYERING



**SOBER NOMAD**



**MINIMAL ARTISAN**



**MODERN MONK**





# TREND MYTHIC WANDERER



@etro13.png



theworldisyouroyster.jpeg



cafe denadine.jpeg

## The Sacred Consumer Shift

The macrotrend embraces a nurturing and restorative mindset of holistic healing and wonder, weaving together elements of spirituality and ancestral wisdom. It seeks to reconnect with the natural world and tap into the healing energies of the earth and cosmos. Drawing inspiration from ancient traditions and mystical practices, this trend embodies the role of the alchemist, blending elements of the past with a bohemian flair. Each piece becomes a vessel for awe and exploration, inviting wearers on a journey of self-discovery and spiritual awakening.

The aesthetic narrative fuses earthy stories and celestial notions, crafting new nomadic silhouettes in maxi length that billow with the whispers of ancient wisdom. Primal bohemian patterns embellish textiles, while layering and drapes create a sense of mystery. Chic silhouettes are juxtaposed with wilderness textiles and color palettes, marrying urban sophistication with the raw beauty of the untamed wilderness.

It's a celebration of the mystical and the magical, with a focus on finding beauty in the interconnectedness of all things. This trend offers a sanctuary of healing and rejuvenation, inviting an inner alchemist to reconnect with our roots and find solace in the beauty of the natural world.

[ACCESS ALL IMAGES  
CLICKING HERE](#)



# MOOD MYTHIC WANDERER



Todd Snyder-6.jpg



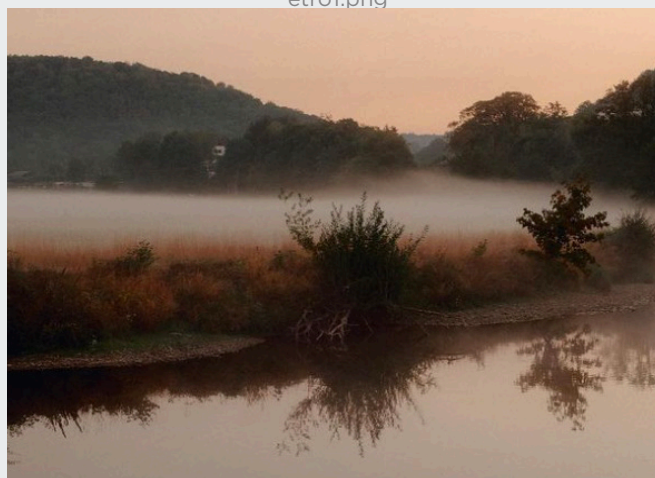
vogue.jpeg



etro1.png



etro



kinfolk2.png



@korno.mx.jpeg

HERBALIST **+300%**

MYSTICISM **+100%**



@clara.lipson1.png

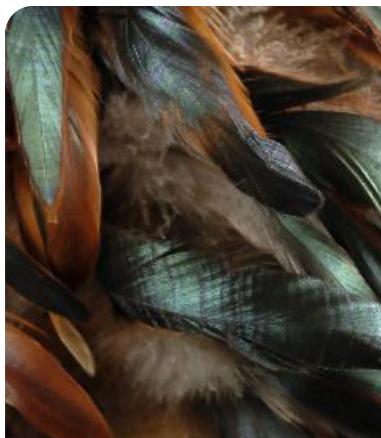


Vuitton\_4.jpg

ANCESTRAL - MYSTICAL - PRIMAL NOMADS - WARMTH - BOHEMIAN ALCHEMY - HOLISM



# COLOR PALETTE MYTHIC WANDERER



@chasingrainbowsforever.jpeg



inside.jpeg



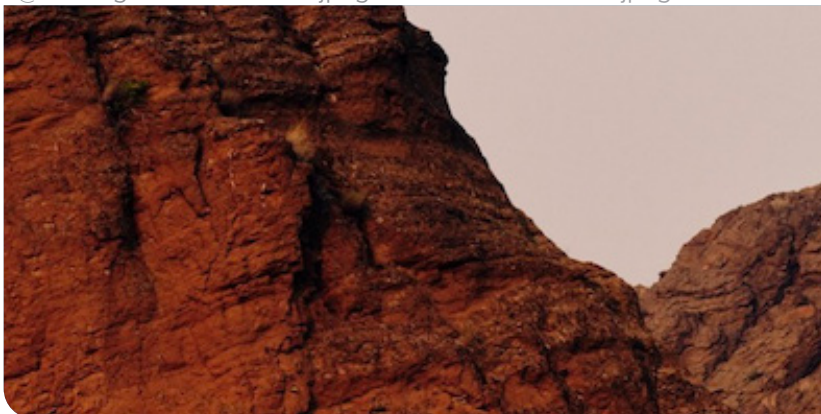
@dionbal9.png



@tg.botanical4.png



@johannbesse5.png



atmos5.png



cafe denadine.jpeg

**Fired Brick**  
19-1337 TCX

**Gold Flame**  
16-1449 TCX

**Clay**  
15-1231 TCX

**Red Clay**  
18-1454 TCX

**Daffodil**  
14-0805 TCX

**Downtown Brown**  
19-1223 TCX

**Military Olive**  
19-0622 TCX

**Deep Dive**  
19-4126 TCX

**Spiritual Connection.** The Mythic Wanderer palette offers hues that evoke a sense of natural warmth. Orange-tint browns such as Gold Flame, Downtown Brown, and Fired Brick ignite the palette with earthy vitality, reminiscent of ancient pathways and sun-drenched landscapes. Clay beige offers a grounding presence, providing stability and a touch of serenity to the ensemble. Red clay, with its copper undertones, adds a rustic and raw element, evoking the natural beauty of weathered earth. Military Olive brings an olive khaki tone that speaks of untamed wilderness, adding a sense of resilient strength. Daffodil yellow introduces a vibrant touch of optimism, illuminating the palette with its cheerful energy. To balance the warmth, Spiritual Deep Dive Blue infuses a profound sense of tranquility, reminiscent of serene twilight skies. Together, these colors create an evocative palette that inspires a journey of spiritual exploration and invites a sense of wonder and curiosity, crafting styles that are both adventurous and deeply reflective.



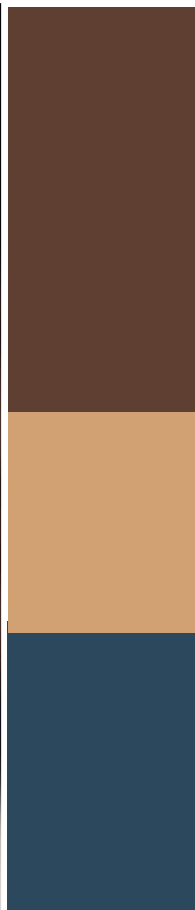
# COLOR HARMONIES MYTHIC WANDERER

## PALETTE 1



etro-clip-f24-064.jpg

The color palette combines rich red browns with a tile hues, creating a bold and luxurious mood. The red browns exude warmth and sophistication, adding depth and richness to the palette. And deep tile introduces a sense of bold opulence, providing a striking contrast that commands attention. Together, these colors create an elegant palette that is timeless and captivating for chic ensembles.

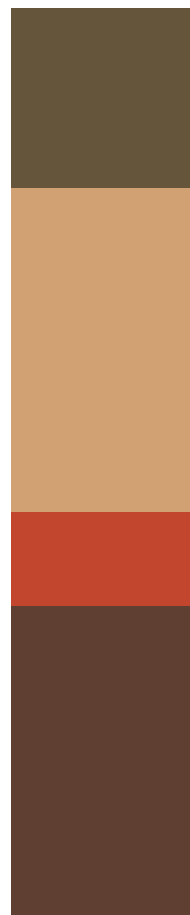


This color palette merges warm reddish browns with soothing beige and vibrant rusty orange, creating a dynamic and inviting atmosphere. The reddish browns evoke a sense of earthiness and coziness, while beige offers a neutral and calming backdrop. Rusty orange adds a pop of energy and warmth, infusing the palette with a lively and inviting ambiance of comfort and vibrancy.

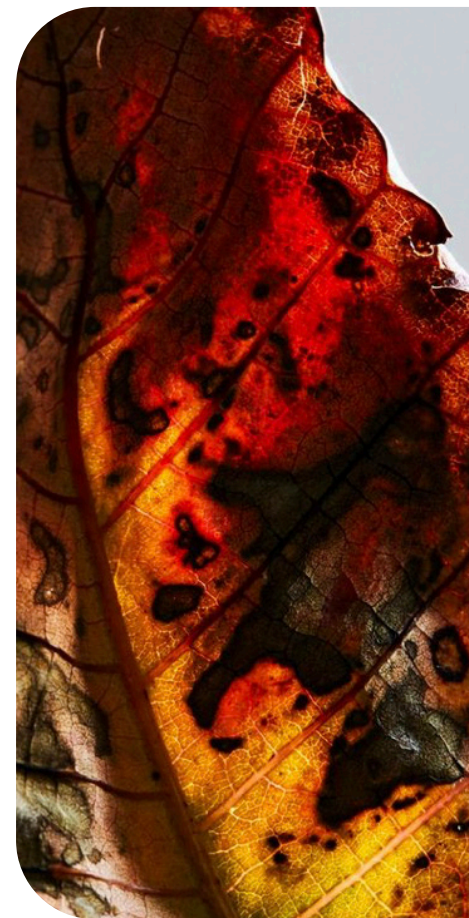
## PALETTE 2



@johannbesse6.png



## PALETTE 3



@johannbesse5.png

This color palette marries the warmth of reddish browns with the vibrant energy of yellow, creating a dynamic and inviting atmosphere. The reddish browns evoke a sense of coziness and earthiness, while the yellow infuses the palette with brightness and optimism. Together, these hues create a harmonious balance, offering a feeling of warmth and cheerfulness that is both comforting and uplifting.





# KEY LOOKS MYTHIC WANDERER



ulla johnson--13.jpg

**CHIC HUNTSMAN**



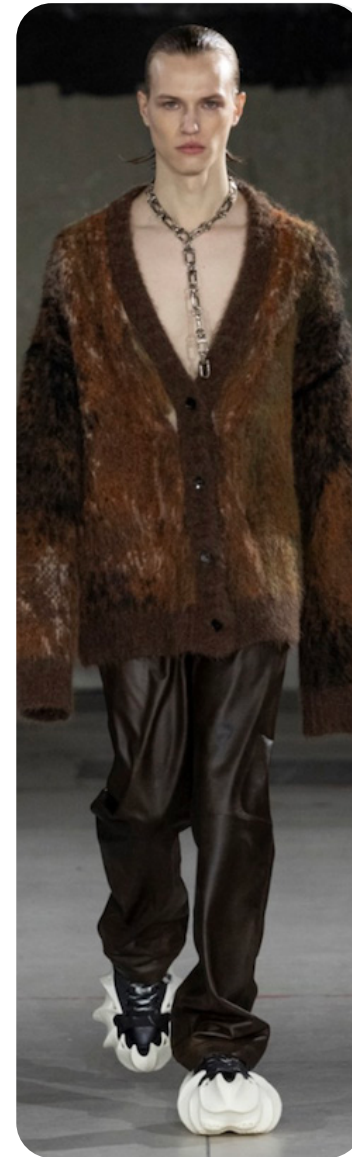
etro-10.jpg

**PRIMAL BOHO**



etro-3.jpg

**GYPSY SOURCERER**



feng chen wang-5.png

**ROCK NOMADS**



sean suen

**WILD OFF-GRID**



# KEY LOOKS MYTHIC WANDERER



Fendi\_8.jpg

**CHIC HUNTSMAN**



etro-9.jpg

**PRIMAL BOHO**



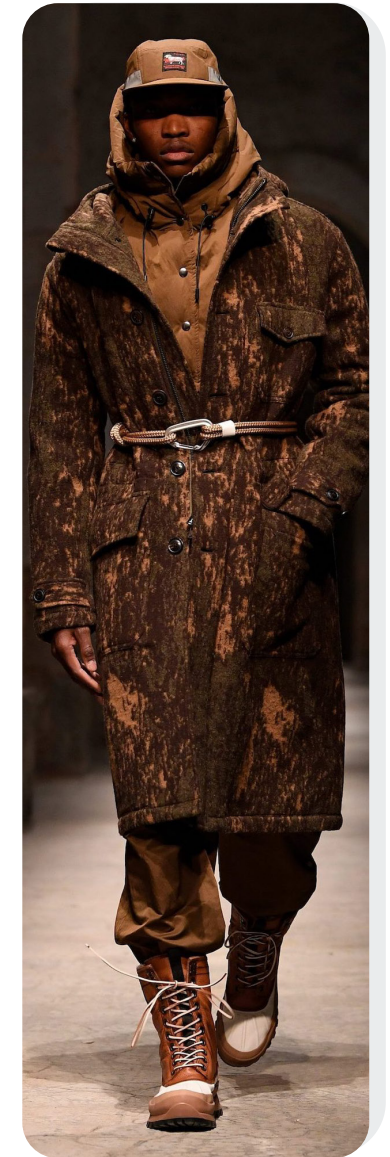
Dsquared2\_5.jpg

**GYPSY SOURCERER**



versace6.jpg

**ROCK NOMADS**



Todd Snyder-12.jpg

**WILD OFF-GRID**



# KEY MATERIALS MYTHIC WANDERER



hermes5.png

## NOMADIC FURRY



Todd Snyder-6.jpg



theworldisouroyster.jpeg

## MYSTICAL TRIBALISM



etro-8.jpg



wansie

## ABSTRACT MOHAIR KNITS



feng chen wang-5.png



van beirendonck

### Natural and Nomadic Essence.

Nomadic fuzzy and furry materials, mohair knits in natural abstract patterns echo the untamed wilderness. These tactile textures invite touch and exploration, evoking a sense of coziness and warmth against the elements. Intertwined with the fabric's spiritual feel are mystical tribal motifs, telling stories of ancient wisdom and cultural heritage. These motifs dance across garments, adding depth and intrigue to each piece, as if carrying the whispers of distant lands and forgotten rituals. In this fusion of textures and symbols, nomadic fashion becomes a canvas for self-expression and adventure, inviting wearers to journey into the unknown and embrace the magic of the wild.



# KEY ELEMENTS MYTHIC WANDERER



ParisStreetsyle\_29.jpg

## NOMADIC TOGGLE BUTTONS



bed jw ford



Neil Barrett-1.png

## SHEARLING FEATURES



etro



Lemaire\_2.png

## GYPSY FLOUNCES



etro-6.jpg



Dsquared2\_3.jpg

## Bohemian Dimensions.

Nomadic toggle buttons, with their rustic charm, anchor garments in a world of wanderlust and adventure. Shearling hems add a cozy touch, reminiscent of chilly nights under starlit skies, while gypsy flounces dance with the wind, echoing the free-spirited nature of the open road. Together, these elements create a tapestry of nomadic elegance, where each piece tells a story of journeys taken and paths yet to be explored. Embracing the bohemian spirit, these details infuse ensembles with a sense of wild beauty and untamed grace, inviting wearers to embrace the unknown and revel in the magic of the journey.



# KEY ACCESSORIES MYTHIC WANDERER



versace5.jpg

## CIRCULAR SLINGBAGS



Lemaire\_8.png



zegna-.jpg

## FUZZY BAGS



fendi-\_1.jpg



andersson-bell.jpg

## YETI FOOTWEAR



fendi-\_2.jpg



saaci

## Modern Hunter & Gatherer.

Circular nomad sling bags and fuzzy footwear re-define comfort and style, embracing a whimsical nomadic spirit. The sling bags, with their circular design, offer practicality and ease for the modern wanderer, while yeti footwear, ranging from slides to boots, envelop wearers in a cloud-like embrace. These fuzzy companions add a touch of playfulness to any outfit, blurring the lines between cozy comfort and chic fashion. Whether traversing urban landscapes or embarking on wilderness adventures, these accessories become trusted companions on the journey, mirroring the free-spirited essence of the nomadic lifestyle. With their tactile textures, these accessories are a testament to exploration.



# AI INTERPRETATIONS MYTHIC WANDERER

BOHEMIAN

WARM HUES

NOMAD

MYTHICAL

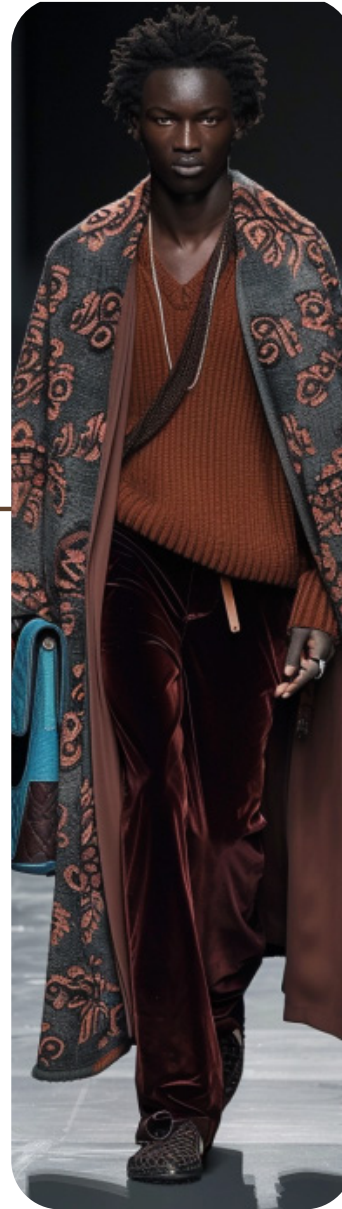
CRAFTED



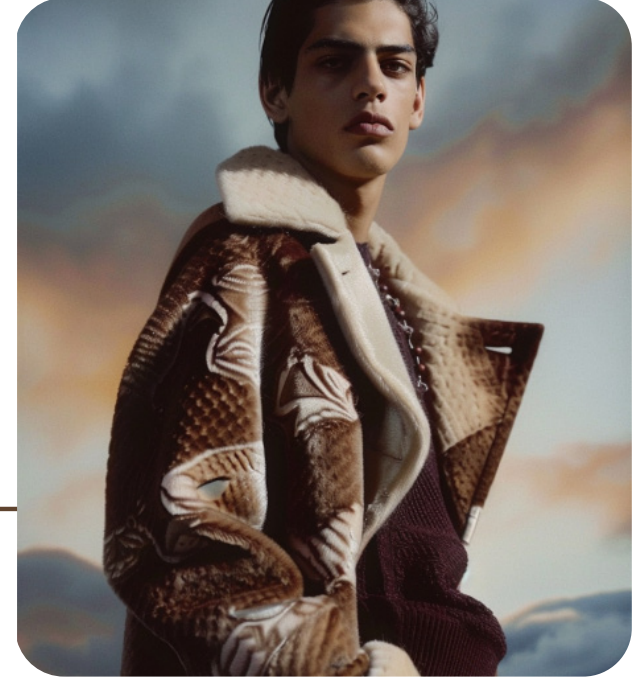
ECCLECTIC BOHO



CHIC NOMAD



GYPSY NOTION

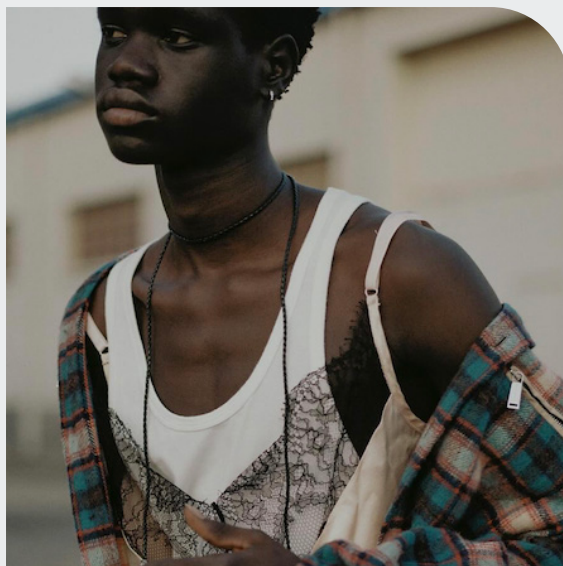




# TREND POETIC DAZE



john\_elliott1.png



dsquared1.png



@admagazine5.png

## The Dreamer Consumer Shift

This macrotrend delves into a mindset that is sensitive, stimulating, and deeply explorative of our contrasting and diffuse human emotion. It celebrates the complexities of the human experience, inviting wearers to embrace their vulnerabilities and delve into the depths of their feelings. The aesthetic narrative unfolds like a tale of strange romance, where a dichotomy of emotion meets like punk and poetry.

Styles exude a seductive allure, drawing us into a world of sensual depth and unconventional beauty. In this trend, uncovering the layers of emotion becomes an art form, in a soft take on punk where leather and sheers collide, while indie sleaze updates grunge for a contemporary twist. Intimate loungewear prevails, adding a comfy sensual notion that blurs the lines between public and private spheres.

Masculine outerwear juxtaposed with feminine romantic dressing creates an effective contrast, enhancing the tension between strength and vulnerability. It's an intimate exploration of the self, where vulnerabilities and flaws are celebrated. Overall, the trend offers a space for individuals to explore sensitivity and sensuality, where every garment tells a story of love, loss, and the richness of our emotions.

[ACCESS ALL IMAGES  
CLICKING HERE](#)



# MOOD POETIC DAZE



@selfservicemagazine2.png



@lampoonmagazine3.png



dsquared2.png



@davidabrahams.jpg



gucci9.jpg



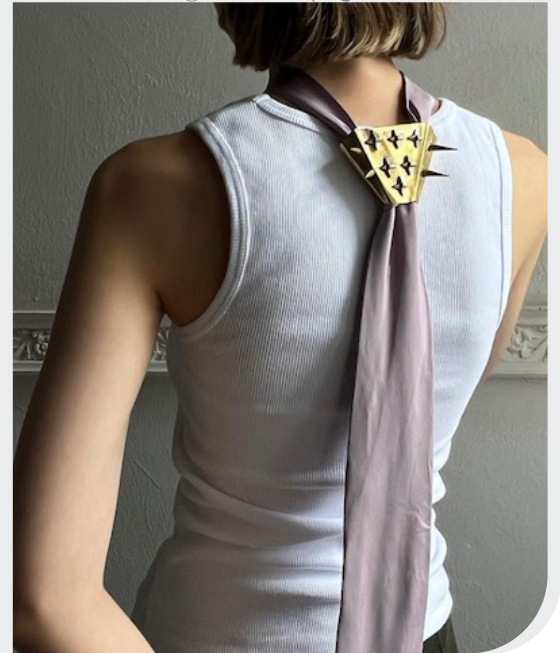
@sayaka\_maruyama\_3.png

ROMANTICISM **+100%**

PUNK **+250%**



@laura.see1.png



@zwyrtech3.png

STRANGE ROMANCE - HEROINE CHIC - SENSUAL - PUNK POETRY - DECONSTRUCTED



# COLOR PALETTE **POETIC DAZE**



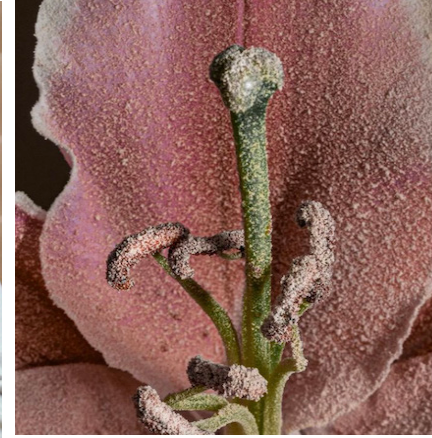
@antoniomarras-15.png



@enfantsrichesetdeprimes8.png



Magliano-m-F24-014.jpg



@hi.suzannel.png



ica.se.jpeg



liliroze.jpeg



melisa taylor.jpeg

Smoke  
14-4505 TCX

Gray Flannel  
17-4016 TCX

Fog  
13-0607 TCX

Taos Taupe  
15-1119 TCX

Reed  
13-0215 TCX

Mulch  
19-0910 TCX

Windsor Wine  
19-1528 TCX

Pale Lilac  
13-2803 TCX

**Deconstructed Beauty.** The Poetic Daze palette weaves together a delicate and sophisticated array of hues, creating an ambience that is tender and evocative. Powdery and dusty neutrals like Taos Taupe and Fog provide a soft and grounding foundation, enveloping looks in a gentle embrace. Tender rose tones in Pale Lilac add a touch of romantic femininity, infusing the palette with modern charm. Cold-tinted pastels such as Smoke and Reed, along with Gray Flannel, introduce a cooler and modern edge, balancing the warmth of the other tones with their cold and refined presence. The palette is further enriched by the deep, berry shade of Windsor Wine, which brings a sense of depth and sophistication and Almost-black Mulch offers a dramatic contrast, grounding the palette with its rich, dark tone and enhancing the overall sense of depth and complexity. Together, these colors create versatile palette that evokes a poetic atmosphere for styles that are both timeless and contemporary.



# COLOR HARMONIES **POETIC DAZE**

## PALETTE 1



desenio.jpeg

This color palette combines the richness of burgundy with the subtle sophistication of beige and grey. Burgundy adds depth and warmth, evoking a sense of luxury and opulence. Beige offers a timeless elegance, providing a neutral canvas that complements the richness of the burgundy. Grey adds a modern touch, grounding the palette with its versatility and understated sophistication. These hues create a timeless chic look.

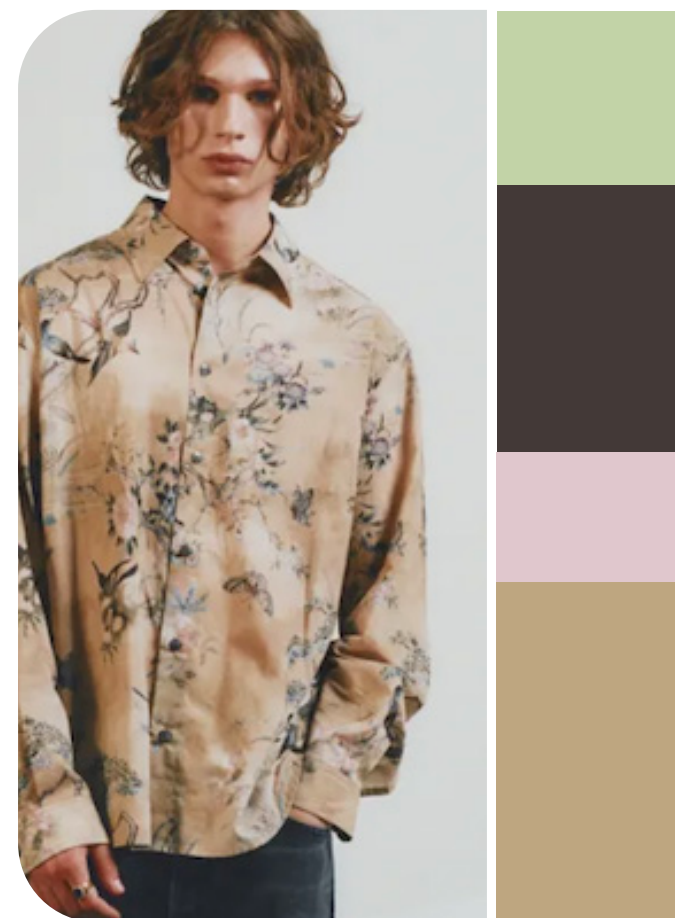
This color palette melds the timeless warmth of beige with the refreshing vibrancy of mint, complemented by the rich depth of burgundy and brown. Beige offers a sense of comfort and versatility, while mint adds a touch of modernity and freshness. Burgundy injects a regal elegance, while brown grounds the palette with earthy warmth.

## PALETTE 2



paulinemonnierparis2.png

## PALETTE 3



johnelliott4.png

This color palette juxtaposes the soft warmth of beige and pale rose with the cool freshness of mint, all anchored by the grounding depth of dark brown. Beige exudes timeless elegance, while mint adds a refreshing and modern twist. Pale rose brings a delicate touch of romance, and dark brown provides richness and contrast. Together, these hues create a harmonious effect that balances sophistication with tranquility and depth.



# KEY LOOKS **POETIC DAZE**



anndemeulemeester2.jpg

**INDIE SLEAZE**



coach7.jpg

**POETIC TOUCH**



maison mihara 5.jpg

**CHIC PUNK**



Shu shu Tong

**SENSUAL SPORT**



gucci12.jpg

**UNDONE DANDY**



# KEY LOOKS **POETIC DAZE**



EgonLab\_6.jpg

**INDIE SLEAZE**



gucci5.jpg

**POETIC TOUCH**



enfants riches7.jpg

**CHIC PUNK**



tanadaisuke

**SENSUAL SPORT**



coach9.jpg

**UNDONE DANDY**



# KEY MATERIALS POETIC DAZE

## POETIC SPARKLES



ami.jpeg



gucci-.jpg

## STURDY WORN-OUT LEATHERS



andersson-bell\_1.jpg

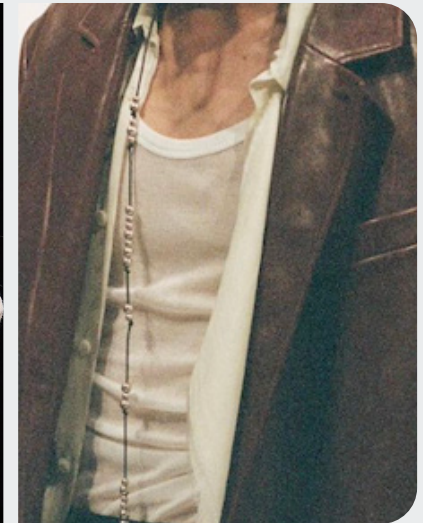


gcds-.jpg

## SENSUAL GAUZE



barberry



ann demeulemeester-2.png

## Tough Romance.

Sparkle finishes add a touch of glamour to ensembles, catching the light and commanding attention with their shimmering allure. Provocative sheer gauze knits reveal glimpses of skin, weaving an air of sensuality and mystery into each garment. Meanwhile, sturdy heavy-duty leathers exude a sense of strength and resilience, grounding the look with their rugged elegance. Together, these elements create a dynamic fusion of sophistication and daring, inviting wearers to embrace both their delicate and bold sides. Whether it's a subtle glimmer, a tantalizing peek, or a solid foundation, each piece contributes to a narrative of emotions.



magliano



# KEY ELEMENTS **POETIC DAZE**



gucci11.jpg

## POETIC APPLIQUES



jw anderson



London Streetsyle\_15.jpg

## DREAMY TRAILING FEATURES

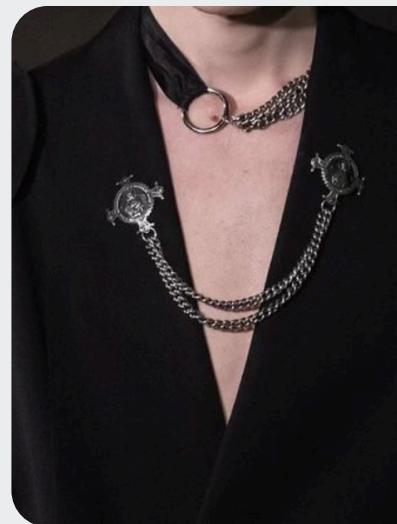


aniyerecords10.png



gucci4.jpg

## PUNK HARDWARE



@enfantsrichesetdeprimes11.png



masu

## Rebellious whimsy.

Poetic floral appliques intertwine with punk hardware, forming a rebellious fusion of delicate beauty and edgy allure. Trailing straps and bands cascade from garments, creating a dynamic movement that captivates the eye. Each element tells a story of juxtaposition, where softness meets strength and fragility dances with defiance. From ethereal charm and a touch of romance to the the presence of punk hardware that injects a rebellious energy, the look is disrupting traditional notions. Trailing straps and bands symbolize freedom and uninhibited expression, weaving a narrative of liberation and self-discovery. The elements embrace the complexities of identity with grace and courage.



# KEY ACCESSORIES **POETIC DAZE**



ann demeulemeester-16.png

## A POET'S LOAFER



Gucci\_1.png



officine-generale-.jpg

## INDIE BIKER BOOTS



coach-.jpg

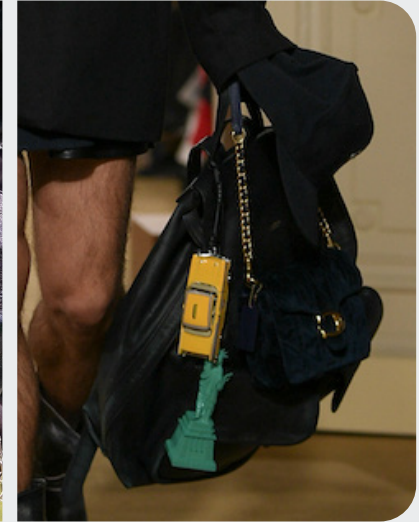


anndersson bell

## Y2K EXTREME CHARM BAGS



Balenciaga.jpg



coach4.jpg

## Heroine Chic Icons.

Poetic loafers dance with elegance, their refined silhouette whispering tales of timeless sophistication. Meanwhile, 2000s extreme charm bags exude an aura of nostalgia, their bold designs and vibrant hues echoing an era of unapologetic personality. Indie style biker boots command attention with their rugged allure, blending rebellious spirit with effortless coolness. Each piece tells a story of individuality and self-expression, inviting wearers to embrace their unique style journeys. From the fancy loafers to the edgy biker boots, fashion becomes a canvas for personal storytelling, where every accessory speaks volumes about the wearer's passions and emotions.



# AI INTERPRETATIONS **POETIC DAZE**

ROMANTIC

SOFT PUNK

SLEAZE

REWORKED

REBEL



CHIC REBEL



SOFT PUNK



INDIE SLEAZE

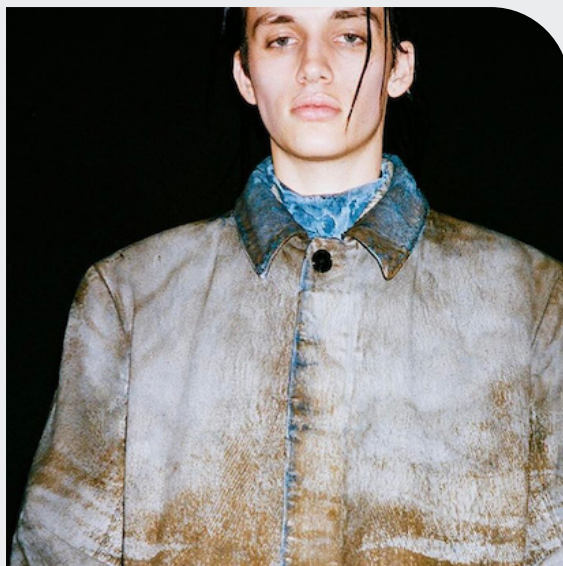




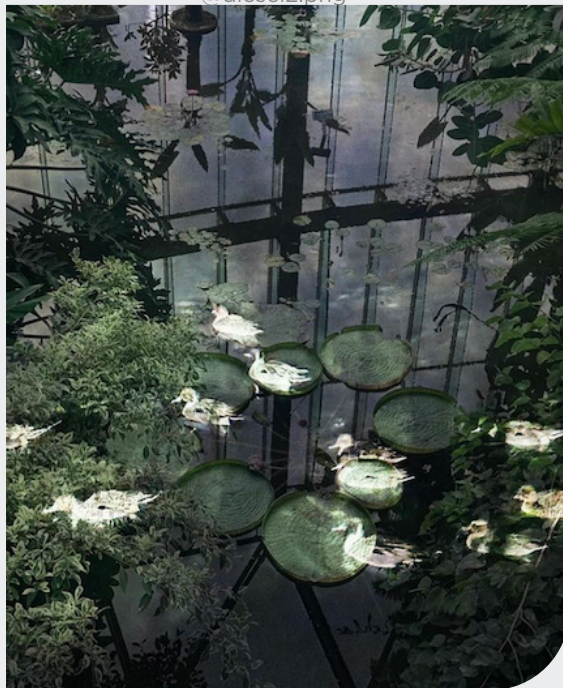
# TREND WONDROUS WORLD



antonio marras-2.jpg



@diesel2.png



@sayaka\_maruyama\_1.png

## The Dreamer Consumer Shift

This macrotrend captures a mindset that is fantastical, stimulating and inspired by a future nature. It invites to embark on a creative journey into imagination, where reality blurs with fantasy and the ordinary transforms into the extraordinary. At the heart of this trend lies an avant-garde dreamscape, where the boundaries of possibility are redefined.

The aesthetic narrative of phantasmagorical nature intertwines elements of the natural world with the surreal to create a world of enchantment. In this trend, reality is seen through the lens of fiction, where cyber dark creatures roam in goblin core and fairy looks, and a sleek, sharp allure proposes more edgy designs.

Bio mimicry is essential and allows to explore new worlds and bio innovations but comes in more rough interpretations for an undone and grungy look. Dark magical creatures emerge from the shadows, adorned in a nocturnal palette with bold highlights that accentuate their mysterious allure.

Each piece is a work of hybris, blending the familiar with the unexpected to create something truly mesmerizing. The morphing nature of this trend invites wearers to explore the beauty of transformation. Imperfection is celebrated, strange beauty revered, and magic infuses every look. In this trend, reality is but a canvas for infinite possibilities.

[ACCESS ALL IMAGES  
CLICKING HERE](#)



# MOOD WONDROUS WORLD



msgm



@apocstore2.png



Masu 5.jpg



diesel



taak



ignant2.png

GOBLINCORE **+160%**

EDGY **+300%**



murrayguy.jpeg



off white

AVANT-GARDE DREAMSCAPE - PHANTASMAGORIC - FAIRYCORE GRUNGE - STRAGE BEAUTY



# COLOR PALETTE WONDROUS WORLD



behance\_1.jpeg



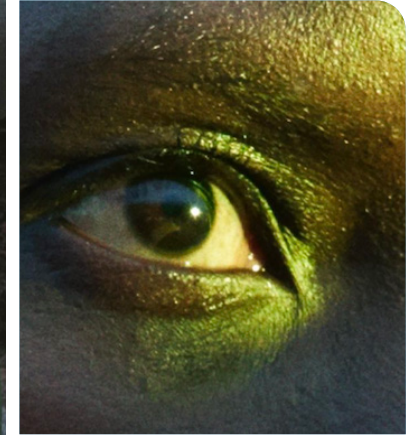
gucci-m-clp-f24-023.jpg



taakk



@ElleMen\_China2.png



@benjaminlennox-2.png



eric wert



say hi to.jpeg

**Spruced Up**  
19-4918 TCX

**Sharp Green**  
13-0535TCX

**Gray Flannel**  
17-4016 TCX

**Shadow Purple**  
19-3217 TCX

**Spring Bouquet**  
14-6340 TCX

**Climbing Ivy**  
19-0417 TCX

**Military Olive**  
19-0622 TCX

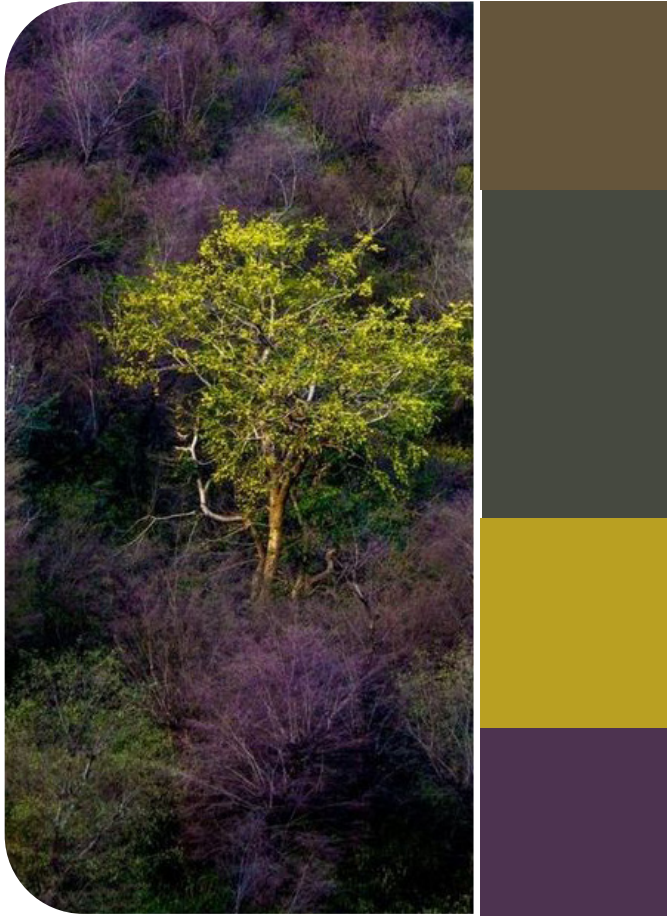
**Antique Moss**  
16-0840 TCX

**Mysterious Allure.** The Wondrous World palette is a vibrant and enchanting journey, combining cyber greens, indulgent purples, swampy greens, and mystical shades. Sharp Green and Spring Bouquet introduce a futuristic and energetic vibe, evoking the lively essence of digital landscapes and virtual realms. Shadow Purple adds a touch of opulence and mystery, creating depth. Swampy greens like Climbing Ivy, Military Olive, and Antique Moss ground the palette with their earthy and natural tones, reminiscent of lush forests and marshlands. These hues bring a sense of balance and harmony, connecting the vibrant and mystical elements with the organic-world of swamps. Magical tile shade Spruced-Up is blending the line between reality and fantasy with its deep, enchanting hue. Gray Flannel, a swampy-tinted grey, adds a sophisticated and versatile neutral that ties the palette together, offering a subtle yet impactful contrast. The palette resonates wonder and magic of both natural and digital worlds for a truly wondrous effect.



# COLOR HARMONIES **WONDROUS WORLD**

## PALETTE 1



@flickr.jpeg

This color palette merges swampy khakis with muted lime and dark purple, creating a captivating blend that evokes a sense of mystery and intrigue. The swampy khakis offer an earthy and grounded feel, while the muted lime adds a subtle pop of freshness and vitality. Dark purple infuses the palette with depth and sophistication, providing a bold contrast and a touch of drama. These hues create an evocative effect, perfect for captivating looks.

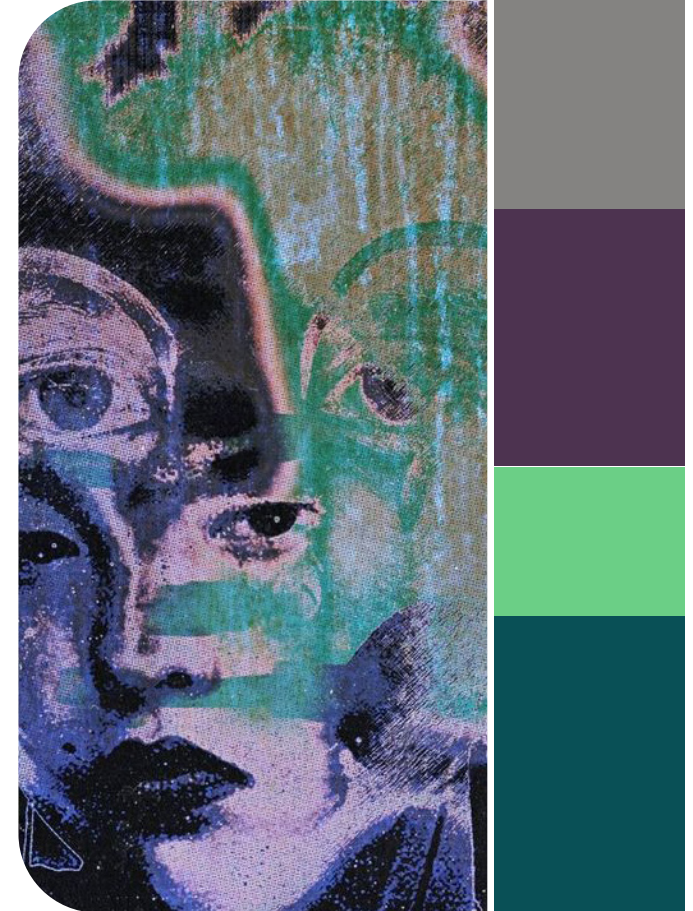
This dynamic color palette juxtaposes swampy khaki with cyber lime and dark purple, creating a captivating blend of earthy tones and vibrant accents. Swampy khaki offers a sense of organic tranquility, while cyber lime injects a bold burst of energy and modernity. Dark purple adds depth and mystery to the palette, creating a sophisticated contrast. Together, these hues evoke a sense of adventure and intrigue.

## PALETTE 2



off-white-clp-f24-051.jpg

## PALETTE 3



etsy33.jpeg

This color palette juxtaposes the rich allure of dark turquoise and dark purple with the refreshing vibrancy of mint, all anchored by the understated sophistication of grey. Dark turquoise and dark purple add depth and drama, while mint infuses a lively energy. Grey serves as a versatile neutral, grounding the palette with its timeless appeal. The balanced effect that is both bold and harmonious is perfect for dynamic and engaging designs.

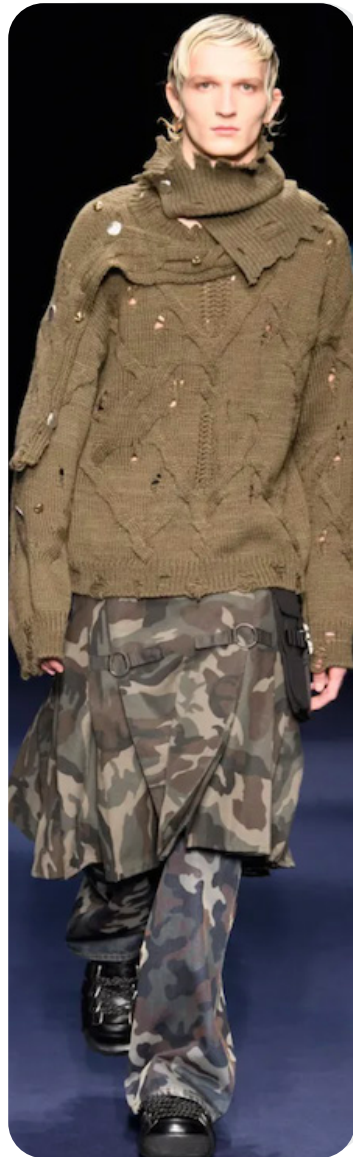


# KEY LOOKS **WONDROUS WORLD**



dhruuv2.png

**CYBER DARK**



andersson bell6.png

**GOBLINCORE**



diesel-2.jpg

**SLEEK ALLURE**



cplus.jpeg

**BIO MIMICRY**



bedjwford.jpeg

**FOREST MAGICIAN**



# KEY LOOKS **WONDROUS WORLD**



dhruuv1.png

**CYBER DARK**



diesel-3.jpg

**GOBLINCORE**



taakk-3.jpg

**SLEEK ALLURE**



antonio marras-2.jpg

**BIO MIMICRY**



hermes

**FOREST MAGICIAN**



# KEY MATERIALS **WONDROUS WORLD**

## PHANTASMIC GRADIENTS



taakk\_2.jpg



fengchenweng.jpeg

## CAMOUFLAGING MIMICRY



rojas



IsabelMarant3.png

## IMMERSIVE SCAPES



simon cracker



undercover-4.png

## Artificial nature.

Phantasmic gradients paint surreal landscapes, where colors meld and shift. They face immersive sceneries that blur the boundaries between reality and fantasy. Within these dreamlike vistas, bio-mimicry takes on a camouflaging role, seamlessly blending into surroundings, as if they were born from the very environment itself. Nature's patterns intertwine with futuristic designs, evoking a sense of wonder and mystery. From lush forests to phantasy terrains, each scene is inviting awe and discovery. Here, the ordinary becomes extraordinary, as the natural world merges with technological marvels in a symphony of hues and textures.



dries.jpeg



# KEY ELEMENTS WONDROUS WORLD



offwhite6.jpg

## CAMOUFLAGING SETS



paul smith1.png



hermes6.png

## GOBLIN GRUNGE: UNDONE FINISHES



jw anderson



andersson bell6.png

## FUR FEATURES



diesel-4.jpg



offwhite7.jpg

### Sensorial Journey.

Camouflaging matching-sets dominate with their seamless integration of patterns, effortlessly blending one piece into the other. Fur features add a touch of wilderness to the aesthetic, offering a sense bio-mimicry in texture. The goblin look takes center stage with its untamed allure, embracing an undone finish that speaks of primal instincts and wild abandon. Each feature is a fusion of mystery and rebellion, as wearers immerse themselves in the whimsical realm of fantasy and folklore. With a nod to the unconventional, these outfits defy convention and invite exploration into the depths of imagination.



# KEY ACCESSORIES **WONDROUS WORLD**



paulsmith.jpeg

## RESILIENT VENOM BIKER BOOTS



emporio-armani.jpg



kenzo\_5.png

## SHARP EXTENDING SOLES



emporio-armani-m-clp-f24-167.jpg

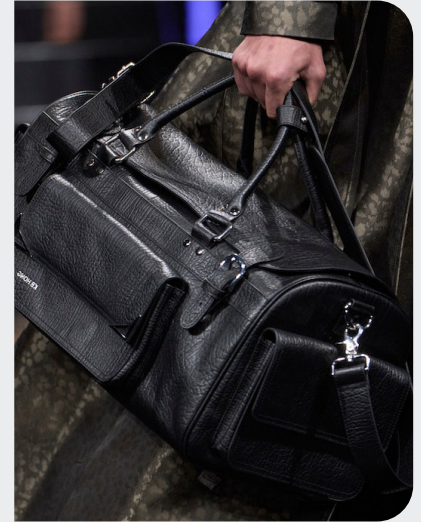


Vuitton\_18.png

## MULTIPOCKET HARDWARE REBELS



prada



kbhong-.jpg

## **Villain Energies.**

Venom biker boots, with their sleek design and menacing aura, command dark attention. Featuring multi-pocket hardware bags, the looks accessories blend practicality with edgy style, offering ample storage while adding a rebellious flair to any outfit. Sharp extending soles on footwear further emphasize the fierce aesthetic, elevating wearers to new heights of confidence and subversive attitude. Each element of this ensemble exudes a sense of danger and intrigue, inviting individuals to embrace their inner renegade and venture boldly into the urban jungle. With venomous allure and uncompromising style, these pieces make a statement that is both powerful and unforgettable.



# AI INTERPRETATIONS **WONDROUS WORLD**

GOBLINCORE

CYBER

MAGIC

NOCTURNAL

VILLAIN



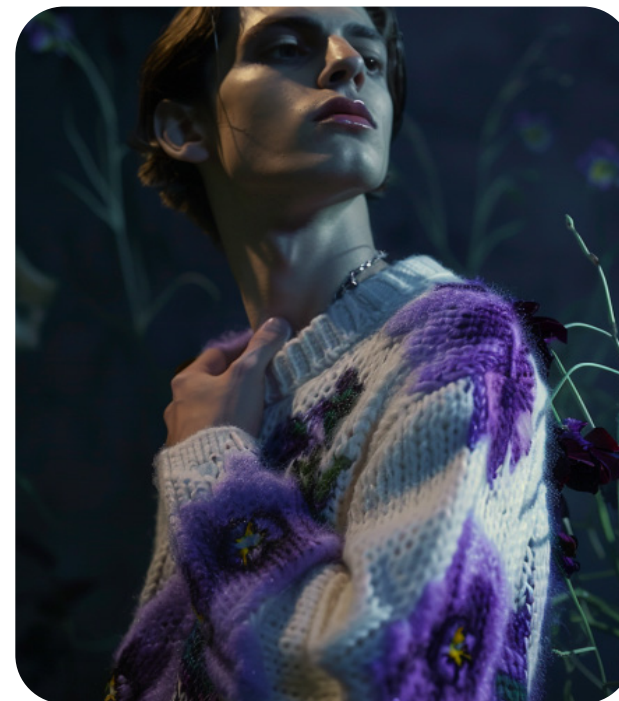
CYBER GRUNGE



DARK MAGIC



SLEEK EDGE







## DATA TO DRIVE

01 CREATIVITY

02 STRATEGY

03 SUSTAINABILITY



LIVETREND

# THANK YOU!

You may not copy, reproduce, distribute, publish, display, perform, modify, create derivative works, transmit, or in any way exploit any such content, nor may you distribute any part of this content over any network, sell or offer it for sale, or use such content to construct any kind of database. You may not alter or remove any copyright or other notice from copies of the content on any Livetrend report.

**If you have further needs, please  
contact us via chat.**