



WOMENSWEAR
SS 2025
FORECASTING
SKIRTS
KEY ITEMS



LIVETREND

SKIRTS SS25 INTRODUCTION



gucci_1.jpg

altuzarra.jpg

FREEPEOPLE-20.webp

miumiu.png




FORECAST


Grace and Confidence. Elevate femininity with the SS25 selection of skirts, that artfully plays with sheer fabrics, lace, and ruffles to embody a softer, more romantic aesthetic. Embracing gentler volumes, these skirts redefine modern elegance with a touch of whimsy and dreamy femininity. Opposed to that, a corporate tailored and sleek range in column and mini lengths presents a refined, professional charm. SS25 reflects a contemporary style of duality. As new highlights, Romcom-inspired 2010s slip and knee skirts, seamlessly blend a feminine allure with an affirmative spirit. The season's skirts offer a perfect balance of sophistication and modern playfulness, adding a dash of romance to the wardrobe. Explore the intersection of grace and confidence as SS25 Skirts invite us to indulge in the beauty of varied textures, feminine details, and versatile lengths, ensuring a delightful and empowering ensemble for every occasion.

This forecasting report is realized crossreferencing LIVETREND data from several sources to empower the expertise of our Trend Analysts to forecast the trends with concrete and quantitative information. Find the related data sources and icons on the last slides.

[ACCESS ALL REPORT IMAGES
CLICKING HERE](#)

KEY DETAILS SKIRTS SS25

 **INVEST**




@becandbridge-4.png


THE LOW WAIST



BIG TREND


sandy liang.jpg.webp

 **TEST**




aniye records-14.png


THE FLOUNCE & RUFFLE



STABLE TREND

moschino-3.png

 **INVEST**



bottega veneta-4.png

THE ASYMMETRIC HEM



SAFE TREND

New York Streetstyle - 175.jpg

 **TEST**



esber-1.jpg.webp

THE PUFFY POCKET



SAFE TREND

coperni.jpg_1.webp

SKIRTS SS25 **SPOTLIGHT**



MANIFEST



INVEST



TEST

SLEEK PENCIL



münn1.png

ROMCOM SLIP



supreh.jpeg

SARTORIAL BOHO



scervino-.jpg

MINI TUTU



david koma-0.png

SHEER LAYER



philip lim--0.jpg

DAZZELING OPTION



gucci_2.jpg

This Trend Spotlight proposes the must-have products of the season to build the right assortment.

This selection is made to ensure that you have the right collection staples, invest in the right core pieces and test the right trendy items within your product range.

Find the full list of seasonal core items on the next slides.

KEY ITEMS SKIRTS SS25



MANIFEST



gucci.jpg



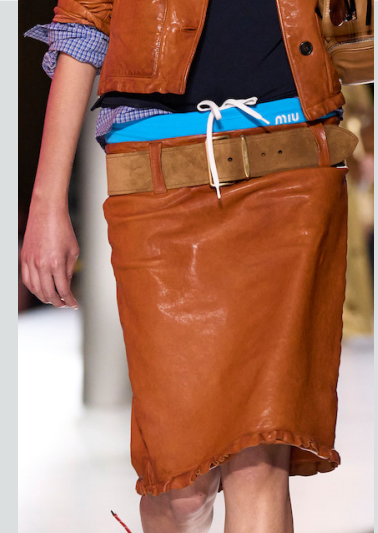
münn1.png



markgong-.jpg



zimmermann-.jpg



miu-miu-.jpg

BIG TREND



MANIFEST



jacquemus-1.jpg.avif



gucci_1.jpg



maryam-nassir-zadeh-.jpg



Didu-2.png



jacquemus-2.jpg.avif

STABLE TREND

THE CORPORATE PENCIL

THE TAILORED MICRO

KEY ITEMS SKIRTS SS25



INVEST



ralph lauren -9.png



holzweiler1.jpg



FREEPEOPLE-21.webp



rave-review.jpg



scervino-.jpg

THE ROMANTIC BOHO

BIG TREND



MANIFEST



FREEPEOPLE-9.webp



shushu tong-1.jpg



vallant.jpg



vivetta-.jpg



supriya-lele.jpg

THE ROMCOM SLIP SKIRT

SAFE TREND

KEY ITEMS SKIRTS SS25



TEST



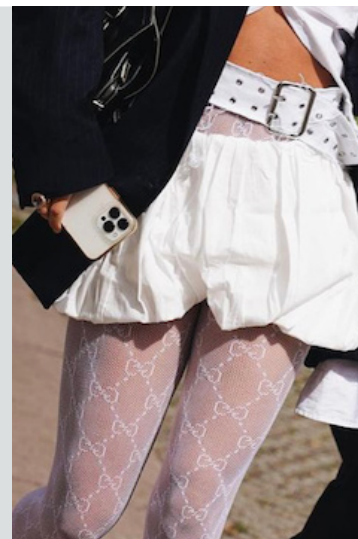
@palomawool_1.png



kiko-kostadinov-.jpg



david koma-0.png



@streetpie-2.png



aaron esh3.png

THE POUFF

EARLY SIGN



TEST



FREEPEOPLE-19.webp



@becandbridge-1.png



loewe-2.png



stella mccartney.jpg.webp



judy-turner.webp

THE DELICATE DECONSTRUCTED

EDGY TREND

KEY ITEMS SKIRTS SS25



TEST

THE MINI TUTU



Paris Streetstyle - 429.jpg



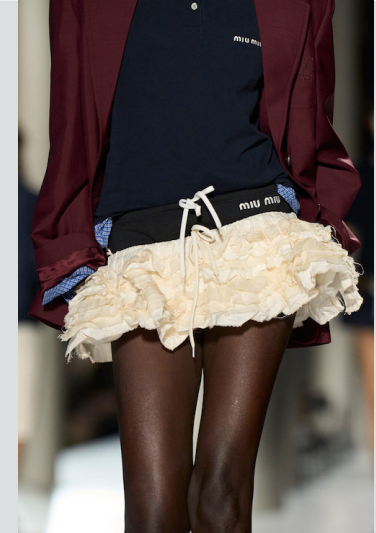
JADED_21.jpg.webp



Kim-Kardashian.jpg



@comission.png



miu-miu-_1.jpg

EDGY TREND



TEST

THE 2010S KNEE SKIRT



alessandro vigliante-1.png



FREEPEOPLE-6.webp



@kulesza_pik_3.png



huoshang zhang1.png



maryam-nassir-zadeh.jpg

SAFE TREND

KEY ITEMS SKIRTS SS25



MANIFEST



Bottega-Veneta-.jpg



y-project-.jpg



FREEPEOPLE-14.webp



8on8--1.png



erdem.jpg

STABLE TREND



TEST



gucci_2.jpg



blumarine.jpg



proenza-schouler.jpg



coperni.jpg.webp



van-noten.jpg

EDGY TREND

THE SOLID COLUMN

THE BEDAZZLED

KEY ITEMS SKIRTS SS25



MANIFEST



esber_3.jpg



ALANUI.webp



popova.jpg



givenchy.jpg

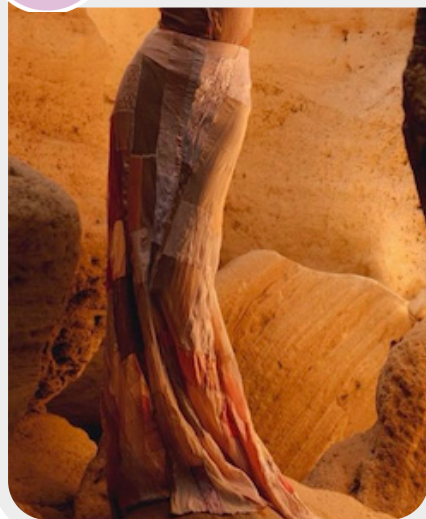


jacquemus-4.jpg.avif

STABLE TREND



TEST



@noemiottiliaszabo.png



mirrorpalais.webp



faith-connexion.jpg



etro-6.png



zara-3.png

EDGY TREND

THE DIVINE DRAPE

THE LONG MERMAID

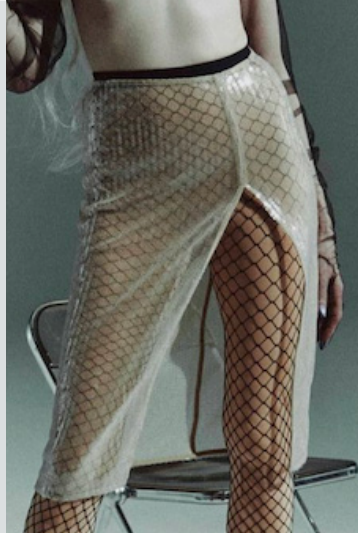
KEY ITEMS SKIRTS SS25



TEST



sportmaxss (2).webp



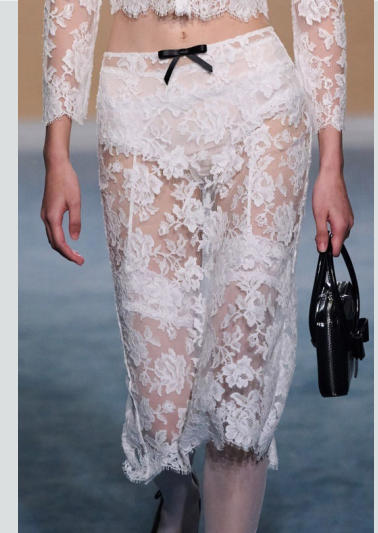
@saintlukeartists_11.png



didu-21.png



aknvas1.jpg



shushu tong-3.jpg

EDGY TREND

THE SHEER LAYER



TEST



FREEPEOPLE-2.webp



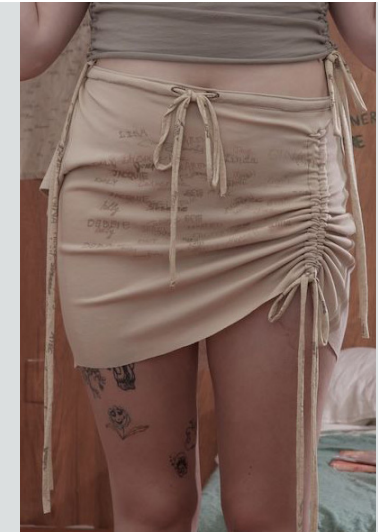
@modaoperandi-7.png



ottolinger3.jpg



isa boulder-7.png



Gabe Gordon-3.jpg

EDGY TREND

THE GATHERED PARACHUTE

DATA SOURCES & ICONS

TREND GROWTH



MARKET

YEAR ON YEAR TREND GROWTH ON E-COMMERCE



SOCIAL MEDIA

YEAR ON YEAR TREND GROWTH ON INSTAGRAM



CONSUMER INTEREST

YEAR ON YEAR GROWTH OF ONLINE SEARCH VOLUMES



FASHION SHOWS

YEAR ON YEAR TREND GROWTH ON FASHION SHOWS

TREND BEHAVIOR

EDGY TREND

weak signal of a potential micro trend with very high risk

EARLY SIGN

emerging trend with growing perspective but higher risk

SAFE TREND

announced trend with growing perspective and safe risk

BIG TREND

trend with a big magnitude due to high commercial potential and quick adaption

STABLE TREND

trend that is already present in the market with flat growth

LAST CALL

trend with decreasing perspective but still having business potential

TREND MAGNITUDE



MANIFEST

AN ICONIC PRODUCT THAT IS A STABLE TREND OF LARGE MAGNITUDE WITH CONFIRMED COMMERCIAL SUCCESS



INVEST

A CORE PRODUCT REPRESENTING A STEADILY GROWING TREND OF MODERATE MAGNITUDE WITH COMMERCIAL POTENTIAL



TEST

A STATEMENT PRODUCT WITH GROWING PERSPECTIVE BUT SMALLER MAGNITUDE AND HIGHER RISK

SKIRTS

WOMENSWEAR

FORECASTING

SPRING/SUMMER 2025



DATA TO DRIVE

01 CREATIVITY

02 STRATEGY

03 SUSTAINABILITY



LIVETREND

THANK YOU!

You may not copy, reproduce, distribute, publish, display, perform, modify, create derivative works, transmit, or in any way exploit any such content, nor may you distribute any part of this content over any network, sell or offer it for sale, or use such content to construct any kind of database. You may not alter or remove any copyright or other notice from copies of the content on any Livetrend report.

If you have further needs, please contact us via chat.