



WOMENSWEAR
SS 2025
FORECASTING
PANTS
KEY ITEMS



LIVETREND

PANTS SS25 INTRODUCTION



zara-24.jpg



retrofete.png



Maria McManus-3.png



valentino-12.jpeg



FORECAST

Curious Confidence. Embark on a chic sartorial journey with SS25 Pants, where the tailored baggy aesthetic remains in refined Bermuda and wide-leg styles. Slimmer fits emerge in the form of cigarettes, straights, and capri-length, introducing a more sophisticated and refined feel to the season. Shorts make a statement with mini hems, offering a striking juxtaposition to the baggy silhouette: From tailored and sporty hot pants to underwear-inspired panty-like styles, SS25 explores a diverse range of styles, celebrating freedom of individual expression. Parachute pants replace the cargo and are upgraded in satin-like finishes for an elevated touch. Overall, the collection embraces natural textures like linen and incorporates timeless pinstripes, creating a sophisticated yet coastal ambiance. SS25 Pants redefine contemporary elegance, offering a versatile range that effortlessly transitions from tailored to comfort and resonate a chic, natural sophistication.

This forecasting report is realized crossreferencing LIVETREND data from several sources to empower the expertise of our Trend Analysts to forecast the trends with concrete and quantitative information. Find the related data sources and icons on the last slides.

[ACCESS ALL REPORT IMAGES
CLICKING HERE](#)

KEY DETAILS SKIRTS SS25



INVEST



mara-hoffman.jpg

THE SUMMER PINSTRIPE



mango.jpeg

SAFE TREND



MANIFEST



miumiu.webp

THE VEGETAL FIBERS



toteme-neutral-wide-fluid-trousers.jpg

STABLE TREND



TEST



acne-.jpg

THE OFF-GRID FINISH

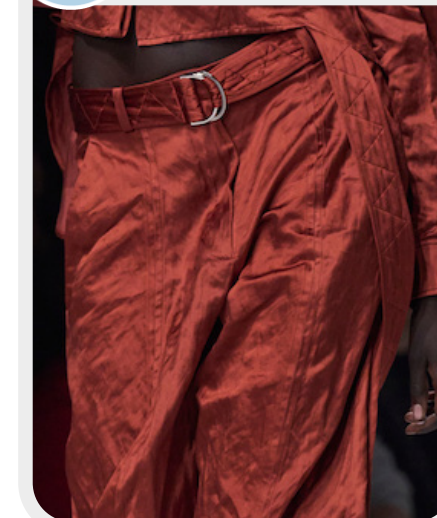


freepeople-11.webp

EDGY TREND



INVEST



ferrari-.jpg

THE DIVINE SATIN



cultgaia-1.jpg

SAFE TREND

SKIRTS SS25 SPOTLIGHT



MANIFEST



INVEST



TEST

CASUAL CORPORATE



gauchere-4.png

90s SLIMLINE



no21 --4.png

CHIC BERMUDA



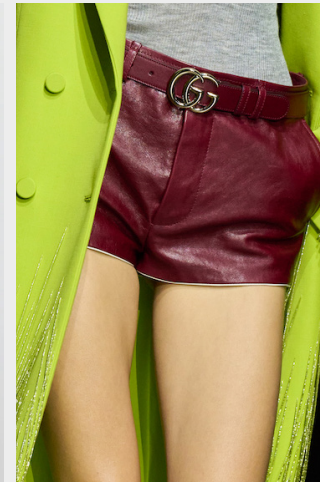
Milano Streetstyle-170.jpg

CRISP NYLON



esber-2.jpg.webp

HOT PANTS



gucci.jpg

SLEEK CAPRI



16arlington.webp

This Trend Spotlight proposes the must-have products of the season to build the right assortment.

This selection is made to ensure that you have the right collection staples, invest in the right core pieces and test the right trendy items within your product range.

Find the full list of seasonal core items on the next slides.

KEY ITEMS PANTS SS25



INVEST

THE LOW SLIMLINE



no21 --4.png



celine_4.png



freepeople-9.webp



esber.webp



zara-27.jpg

SAFE TREND



MANIFEST

THE CASUAL TAILORED



miu-miu.jpg



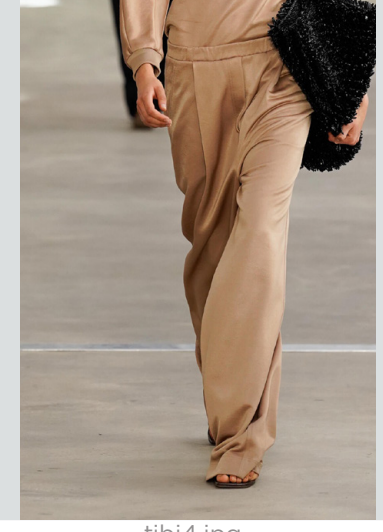
stella mccartney.jpg.webp



zara-16.jpg



proenza-schouler.jpg



tibi4.jpg

STABLE TREND

KEY ITEMS PANTS SS25



INVEST



etro.jpg



KNWLS-1.jpg



rambaldi.jpg



alessandra rich.webp



atlein-0.png

EARLY SIGN



INVEST



tosi.jpg



natasha-zinko.jpg



zara-22.jpg



freepeople-6.webp



jaded-6.jpg.webp

LAST CALL

THE Y2K LEGGING

THE STRAIGHT CARPENTER

KEY ITEMS PANTS SS25



INVEST

THE EVERYDAY PARACHUTE



zara-20.jpg



freepeople-3.webp



Brunello Cuccinelli-11.png



esber-4.jpg.webp



vaillant.jpg

STABLE TREND



TEST

THE EMBELLISHED PANT



rotate .jpg



acnestudio-14.jpg



blumarine.jpg



Rabbane-3.jpg



missoni-3.png

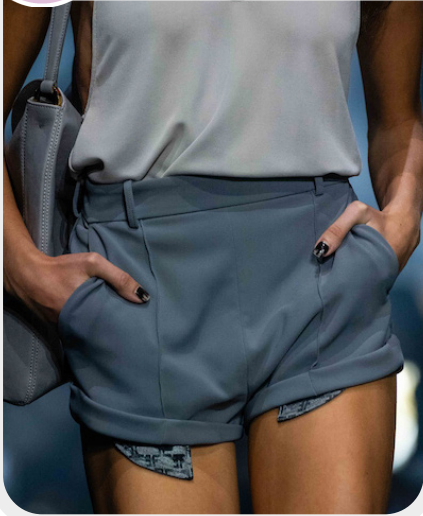
EDGY TREND

KEY ITEMS SHORTS SS25



TEST

THE HOT PANTS



elisabetta-franchi.jpg



gucci.jpg



liang-2.jpg



maryam-nassir-zadeh.jpg



peter-dog.jpg

STABLE TREND



INVEST

THE TAILORED BERMUDA



miumiu.webp



Milano Streetstyle-170.jpg



ambush-15.png



van-noten.jpg



malloni-0.png

BIG TREND

KEY ITEMS PANTS SS25



TEST



jaded-8.jpg.webp



retrofete.webp



16arlington.webp



blumarine-.jpg



coperni3.jpg

THE KAREN CAPRI

EARLY SIGN



TEST



emporio-armani-.jpg



ralph lauren -7.png



miu-miu.webp



n-21.jpg



esber-6.jpg.webp

THE SPORTS SHORTS

SAFE TREND

KEY ITEMS PANTS SS25



TEST



velez-.jpg



ottolinger4.jpg



ny streetstyle-57.jpg



JADED_13.jpg.webp



rachelcomey7.jpg

LAST CALL



TEST



isabel marant-15.png



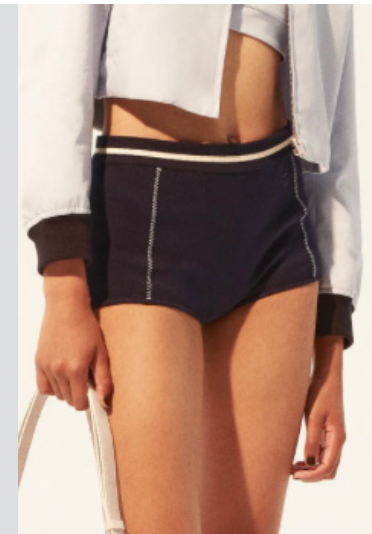
vallant-10.png



attico4.jpeg



rotate.jpg



ambush-2.png

EDGY TREND

THE CARGO BERMUDA

THE PANTY

KEY ITEMS ONEPIECE SS25



TEST



az factory0.png



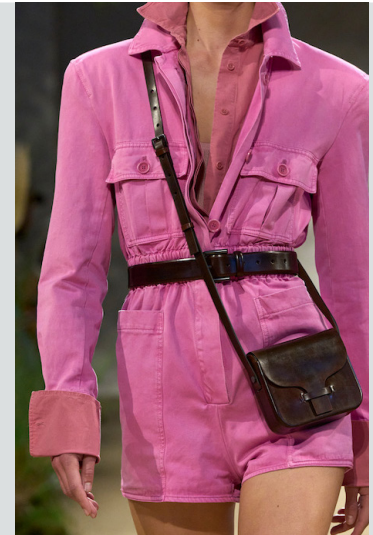
IRO-0.png



gucci_1.jpg



paloma-wool-.jpg



max-mara.jpg

STABLE TREND

THE MINI PLAYSUIT



TEST



calcaterra-1.jpg



isabel marant-6.jpg



YSL - 0.jpg



ujoh0.jpg



ferragamo5.jpg

SAFE TREND

THE SAFARI ONEZIE

DATA SOURCES & ICONS

TREND GROWTH



MARKET

YEAR ON YEAR TREND GROWTH ON E-COMMERCE



SOCIAL MEDIA

YEAR ON YEAR TREND GROWTH ON INSTAGRAM



CONSUMER INTEREST

YEAR ON YEAR GROWTH OF ONLINE SEARCH VOLUMES



FASHION SHOWS

YEAR ON YEAR TREND GROWTH ON FASHION SHOWS

TREND BEHAVIOR

EDGY TREND

weak signal of a potential micro trend with very high risk

EARLY SIGN

emerging trend with growing perspective but higher risk

SAFE TREND

announced trend with growing perspective and safe risk

BIG TREND

trend with a big magnitude due to high commercial potential and quick adaption

STABLE TREND

trend that is already present in the market with flat growth

LAST CALL

trend with decreasing perspective but still having business potential

TREND MAGNITUDE



MANIFEST

AN ICONIC PRODUCT THAT IS A STABLE TREND OF LARGE MAGNITUDE WITH CONFIRMED COMMERCIAL SUCCESS



INVEST

A CORE PRODUCT REPRESENTING A STEADILY GROWING TREND OF MODERATE MAGNITUDE WITH COMMERCIAL POTENTIAL



TEST

A STATEMENT PRODUCT WITH GROWING PERSPECTIVE BUT SMALLER MAGNITUDE AND HIGHER RISK



DATA TO DRIVE

01 CREATIVITY

02 STRATEGY

03 SUSTAINABILITY



LIVETREND

THANK YOU!

You may not copy, reproduce, distribute, publish, display, perform, modify, create derivative works, transmit, or in any way exploit any such content, nor may you distribute any part of this content over any network, sell or offer it for sale, or use such content to construct any kind of database. You may not alter or remove any copyright or other notice from copies of the content on any Livetrend report.

If you have further needs, please contact us via chat.